




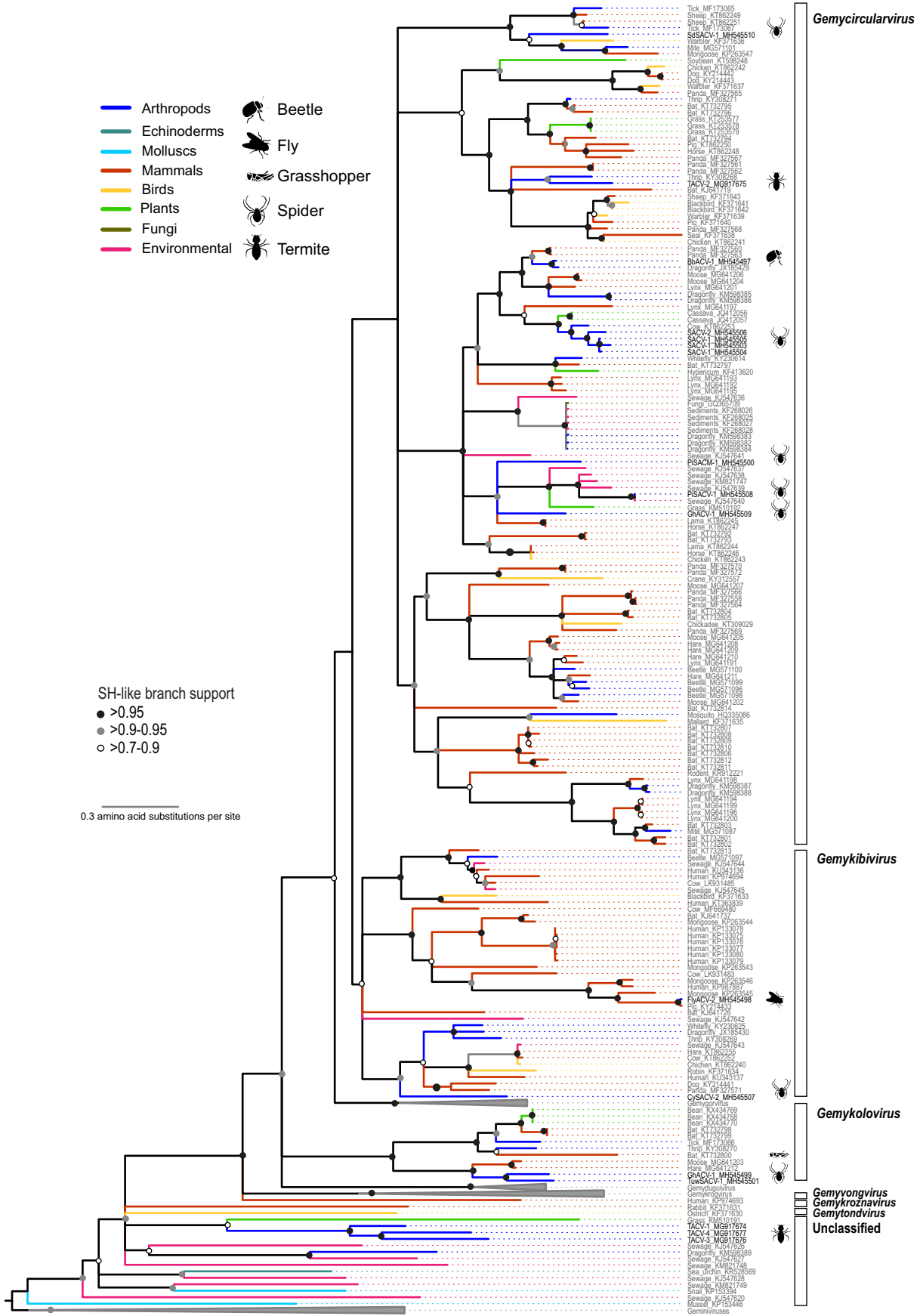


- Arthropods
- Echinoderms
- Molluscs
- Mammals
- Birds
- Plants
- Fungi
- Environmental
-  Beetle
-  Fly
-  Grasshopper
-  Spider
-  Termite

SH-like branch support

- >0.95
- >0.9-0.95
- >0.7-0.9

0.3 amino acid substitutions per site



Gemycirculavirus

Gemykibivirus

Gemykolovirus

Gemyvongvirus

Gemykroznavirus

Gemytondivirus

Unclassified

Tick MF730965
 Sheep KT862249
 Sheep KT862251
 LKS_MF_120000
 SWSACV-1_MH545510
 Warbler KF371638
 Wite MG57101
 Monogoose KP263547
 soybean KT862348
 Chicken KT862242
 Dog MF730966
 Dog KY414443
 Warbler KF371637
 Panda MF321555
 Tring KY308271
 Bat KT742376
 Bat KT742377
 Grass KT425278
 Panda MF321551
 Bat KT742374
 Bat KT742375
 Horse KT862246
 Panda MF321552
 Panda MF321551
 Tring KY308268
 Tring KY308269
 TACV-2_MG917675
 Sheep KF371641
 Blackbird KF371642
 Blackbird KF371643
 Wite MF730969
 Pig KF371639
 Panda MF321558
 Seal KF371638
 Chicken KT862241
 Panda MF321550
 Moose MG541206
 Lynx MG541204
 Lynx MG541201
 Dragonfly KM598388
 Lynx MG541197
 Cassava_C0412056
 Cassava_C0412057
 SACV-2_MH545506
 SACV-1_MH545503
 SACV-1_MH545504
 SACV-1_MH545504
 Wharfay KY230614
 Bat KT732735
 Hypericum KF413620
 Lynx MG541193
 Lynx MG541192
 Lynx MG541191
 Sewage_KJ547636
 Fungus_GJ395108
 Sediments_KJ268026
 Sediments_KJ268027
 Sediments_KJ268028
 Dragonfly KM598382
 Dragonfly KM598383
 Sewage_KJ547637
 Sewage_KJ547638
 Sewage_KJ547639
 PISACV-1_MH545500
 Sewage_KJ547637
 Sewage_KJ547638
 Sewage_KJ547639
 PISACV-1_MH545508
 Sewage_KJ547637
 Sewage_KJ547638
 GRACV-1_MH545509
 lama_KJ598389
 Horse KT862247
 Bat KT732734
 lama_KJ598394
 Horse KT862246
 Chicken KT862243
 Panda MF321570
 Panda MF321571
 Crane KY312557
 Moose MG541207
 Panda MF321566
 Panda MF321564
 Bat KT732615
 Bat KT732616
 Chickadee KT309029
 Panda MF321575
 Moose MG541205
 Hare MG541208
 Hare MG541209
 Lynx MG541191
 Lynx MG541190
 Hare MG541211
 Beetle MS211059
 Beetle MS211058
 Beetle MS211059
 Moose MG541202
 Bat KT732614
 Mosquito_P0335086
 Mallard KF371635
 Bat KT732608
 Bat KT732610
 Bat KT732612
 Bat KT732611
 Lynx MG541198
 Dragonfly KM598387
 Dragonfly KM598388
 Lynx MG541194
 Lynx MG541199
 Lynx MG541196
 Bat KT732610
 Bat KT732611
 Wite MS271087
 Bat KT732612
 Bat KT732613
 Beetle MS271097
 Sewage_KJ547644
 Human KU931336
 Human KU931337
 Cow LR931485
 Blackbird KF371633
 Human KF686489
 Cow MF686490
 Monogoose KP263544
 Human KP330778
 Human KP330779
 Human KP330777
 Human KP330778
 Human KP330779
 Human KP330780
 Monogoose KP263543
 Cow LR931485
 Monogoose KP263546
 Human KF686489
 Monogoose KP263545
 TACV-2_MH545498
 Bat KY24433
 Sewage_KJ547642
 Sewage_KJ547643
 Wharfay KY230615
 Dragonfly KM598390
 Tring KY308269
 Sewage_KJ547643
 Hare KT862245
 Cow KT862245
 Chicken KT862240
 Robin KF31444
 Human KU931337
 Dog KY24433
 Poika MF321577
 CYSACV-2_MH545507
 Gemykolovirus
 Bear OX434769
 Bear OX434768
 Bat KT732708
 Bat KT732709
 Tick MF730966
 Tring KY308270
 Bat KT732610
 Moose MG541203
 Hare KT862245
 GRACV-1_MH545499
 TWSACV-1_MH545501
 Gemyvongvirus
 Gemykroznavirus
 Human KP974693
 Cassia KF311633
 Ostnch KF371630
 Sheep KF610101
 TACV-1_MG917674
 TACV-4_MG917675
 TACV-3_MG917676
 Sewage_KJ547642
 Dragonfly KM598389
 Sewage_KJ547643
 Sewage_KJ547644
 Sea Urchin KM228269
 Sewage_KJ547645
 Sewage_KM931749
 Small KP
 Sewage_KJ547620
 Mussel KP103448
 Geminiviruses