

July 2015

The terrestrial Isopoda (Crustacea, Oniscidea) of Rapa Nui (Easter Island), with descriptions of two new species

Stefano Taiti

Judson Wynne

Follow this and additional works at: https://digitalcommons.usf.edu/kip_articles

Recommended Citation

Taiti, Stefano and Wynne, Judson, "The terrestrial Isopoda (Crustacea, Oniscidea) of Rapa Nui (Easter Island), with descriptions of two new species" (2015). *KIP Articles*. 4887.
https://digitalcommons.usf.edu/kip_articles/4887

This Article is brought to you for free and open access by the KIP Research Publications at Digital Commons @ University of South Florida. It has been accepted for inclusion in KIP Articles by an authorized administrator of Digital Commons @ University of South Florida. For more information, please contact digitalcommons@usf.edu.

The terrestrial Isopoda (Crustacea, Oniscidea) of Rapa Nui (Easter Island), with descriptions of two new species

Stefano Taiti¹, J. Judson Wynne²

¹ *Istituto per lo Studio degli Ecosistemi, Consiglio Nazionale delle Ricerche, Via Madonna del Piano 10, 50019 Sesto Fiorentino (Florence), Italy* ² *Department of Biological Sciences, Colorado Plateau Biodiversity Center, Northern Arizona University, Box 5640, Flagstaff, Arizona 86011-5614, USA*

Corresponding author: *Stefano Taiti* (stefano.taiti@ise.cnr.it)

Academic editor: *D. Bouchon* | Received 28 February 2015 | Accepted 18 May 2015 | Published 30 July 2015

<http://zoobank.org/56B35C30-E575-402C-8480-E73A7E463137>

Citation: Taiti S, Wynne JJ (2015) The terrestrial Isopoda (Crustacea, Oniscidea) of Rapa Nui (Easter Island), with descriptions of two new species. In: Taiti S, Hornung E, Štrus J, Bouchon D (Eds) Trends in Terrestrial Isopod Biology. ZooKeys 515: 27–49. doi: 10.3897/zookeys.515.9477

Abstract

Nine species of terrestrial isopods are reported for the Polynesian island of Rapa Nui (Easter Island) based upon museum materials and recent collections from field sampling. Most of these animals are non-native species, but two are new to science: *Styloniscus manuvaka* **sp. n.** and *Hawaiioscia rapui* **sp. n.** Of these, the former is believed to be a Polynesian endemic as it has been recorded from Rapa Iti, Austral Islands, while the latter is identified as a Rapa Nui island endemic. Both of these new species are considered ‘disturbance relicts’ and appear restricted to the cave environment on Rapa Nui. A short key to all the oniscidean species presently recorded from Rapa Nui is provided. We also offered conservation and management recommendations for the two new isopod species.

Keywords

Crustacea, Isopoda, Oniscidea, new species, Rapa Nui, Easter Island, disturbance relicts, caves

Introduction

Rapa Nui (Easter Island) is one of the most ecologically degraded islands in Polynesia. A number of factors including geographic isolation, island size and low topographic relief (Rolett and Diamond 2004) predisposed Rapa Nui to dramatic human-induced environmental change. Between Polynesian colonization (800–1200 CE; Hunt and Lipo 2006, Shepardson et al. 2008) and prior to European contact in 1722 (McCall 1990), a catastrophic ecological shift occurred where the palm-dominated shrubland shifted to grassland (Wynne et al. 2014). By the mid-nineteenth century, most of the island was converted into a century-long sheep-grazing operation (Fischer 2005).

Contemporarily, few native plant species remain and all terrestrial vertebrates have gone extinct (Wynne et al. 2014). Researchers have described the arthropod communities of Rapa Nui as being equally impoverished (Kuschel 1963, Campos and Peña 1973, Desender and Baert 1997). Of the nearly 400 known arthropod species, only 30 species (~5%) have been identified as either endemic or indigenous with the remaining species either intentionally or accidentally introduced to the island (Wynne et al. 2014, Bernard et al. 2015).

Through fieldwork led by the second author, at least eight island endemic and two Polynesian endemic arthropod species have been recently identified (Wynne et al. 2014). These include one psocopteran (Mockford and Wynne 2013), six species of collembolans (including five new species and one Polynesian endemic; Bernard et al. 2015), one recently described collembolan later identified as endemic (Jordana and Baquero 2008; Wynne et al. 2014), and the two new species of terrestrial isopods described in this paper. All of these animals are presumed to be cave-restricted and represent disturbance relicts – organisms now restricted to a fraction of their former range due to extensive anthropogenic disturbance (Wynne et al. 2014). Given that one-third of the island's endemic arthropod fauna appear restricted to the cave environment, this offers a unique opportunity for conservation and management.

With the exception of the Hawaiian islands (Taiti and Ferrara 1991, Taiti and Howarth 1996, 1997, Taiti 1999, Rivera et al. 2002, Taiti et al. 2003, Santamaria et al. 2013), terrestrial isopods from Polynesia are poorly known (see Jackson 1941 for a review). For Rapa Nui, only three species of terrestrial isopods were previously recorded (Fuentes 1914): *Ligia exotica* Roux, 1828, *Porcellio scaber* Latreille, 1804, and *Armadillidium vulgare* (Latreille, 1804). All of these isopods are non-native species. The purpose of this paper is to identify the terrestrial isopod fauna of Rapa Nui, including the descriptions of two new species.

Material and methods

Study area

Fieldwork was conducted on the Roiho lava flow, ~5 km north of the village of Hanga Roa during three research trips in 2008, 2009 and 2011. The study area is characterized

by gently rolling hills (i.e., extinct scoria cones) with coastal cliff faces flanking the western-most boundary. Vegetation was grassland and invasive guava (*Psidium guajava*) shrub. Within the collapse pit and skylight entrances of most caves, several non-native tree species occurred, including fig (*Ficus* sp.), avocado (*Persea americana*), apple banana (*Musa × paradisiaca*), roseapple (*Syzygium jambos*), guava (*Psidium guajava*) and *Eucalyptus* spp.

The cave environment

Caves are zonal environments often consisting of four principle zones: (1) an entrance (or light) zone representing a combination of both surface and cave climatic conditions; (2) a twilight zone where light is diminished and surface climate conditions are progressively dampened; (3) a transition zone characterized by complete darkness with a further diminished influence of surface climate conditions; and, (4) a deep zone (usually the deepest portion of the cave) where environmental conditions (e.g., complete darkness, temperature, and air flow) remain relatively stable over time and the evaporation rate is negligible (Howarth 1980, 1982). For each isopod detected within caves, we provide a zone designation in the “type material examined” section.

Sampling

Cave and surface sampling was conducted. Research teams (led by the second author) systematically sampled 10 caves during three research trips (16–21 August 2008; 28 June–17 July 2009; and 01–07 August 2011). Four methodologies (pitfall traps, time-constrained searches, opportunistic collecting, and timed direct intuitive searches) were applied to sample 10 caves during the first two trips. Pitfall trap construction consisted of two 946-ml stacked plastic containers (13.5 cm high, 10.8-cm-diameter rim and 8.9-cm base). A teaspoon of peanut butter placed in the bottom of the exterior container was used as bait. The bottom of the interior container had several dozen holes to allow the bait to “breathe” to attract arthropods. Traps were deployed for three to four days.

Time-constrained searches involved estimating a one-meter radius around each pitfall trap sampling station and then conducting a timed search. Searches were conducted for one to three minutes (one minute if no arthropods were observed, three if arthropods were detected) before pitfall trap deployment and prior to trap removal.

Opportunistic collection involved collecting arthropods as encountered – while deploying and removing pitfall traps, and between timed searches. During these intervals, personnel searched the ground, walls and ceilings as they walked the length of each cave. In five caves (where all the collecting methodologies were applied), we also conducted timed direct intuitive searches (DIS) of fern-moss gardens by gently combing through the fern and moss and looking beneath rocks for 40 search-minutes

per garden (two observers \times 20 minutes per observer). In four additional caves, we limited sampling to DIS within fern-moss gardens only (two observers \times 20 minutes per observer).

During the last research trip to the island, the deep zones of four of the caves were sampled via bait sampling and DIS. Three types of baits were placed directly on the ground and within cracks and fissures on cave walls, ceilings and floors: sweet potato (*Ipomoea batatas*), chicken and fish entrails, and small branches from local hibiscus (*Hibiscus rosa-sinensis*) and Gaoho (*Caesalpinia major*) shrubs. Two to three stations of each bait type were deployed, for four to five days, within the deep zone(s) of each cave. At proximity to bait sampling arrays, we also conducted one DIS by searching the cave floor for 10 minutes within a 1-m² area.

From 28 June through 08 July 2009 (total of 10 days), we deployed two 15 x 20 meter surface pitfall trapping grids. Surface Grid 1 (with trap numbers 1 - 20) was established inland at the approximate center of our study area. Surface Grid 2 (with trap numbers 21 - 40) was deployed at the western extent of the study area (~250 m from the coastal cliff face). All pitfall traps were countersunk to ground surface with trap spacing at 5 m between each trap.

For additional information on sampling refer to Wynne et al. (2014) at: <http://www.bioscience.oxfordjournals.org/lookup/suppl/doi:10.1093/biosci/biu090/-/DC1>

Cave codes

We recognize standard practice for locality information is to provide geographical coordinates to facilitate future collecting and interpretation. However, Chilean park officials have requested that neither cave names nor coordinates be included due to cultural and natural resource sensitivities of caves. In place of cave names, we used cave codes supplied by CONAF – Parque Nacional Rapa Nui. A copy of this paper, which includes a table of cave names with associated cave codes, is on file with CONAF – Parque Nacional Rapa Nui headquarters Hanga Roa, Easter Island, and CONAF, Jefe Departamento, Diversidad Biológica, Gerencia de Areas Protegidas y Medio Ambiente, Santiago, Chile.

Preservation, mounting, observation

All material was preserved in 95% ethanol. Identifications were based on morphological characters with the use of micropreparations. Line drawings were made with the aid of a camera lucida mounted on Wild M5 and M20 microscopes. Whole-specimen images were captured using a 1.1 MP Canon 5D Mark II (with a 65 mm zoom lens) mounted on a Visionary Digital BK Lab Plus camera mounting system. We used the program Zerene Stacker to merge images into a composite image. Photoshop CS5 was used for image post-processing.

Museum abbreviations

- AMNH** American Museum of Natural History, New York, USA;
BPBM Bernice P. Bishop Museum, Honolulu, Hawai'i, USA;
MNHN Museo Nacional de Historia Natural, Santiago, Chile;
MZUF Museo di Storia Naturale, sezione di Zoologia, dell'Università di Firenze, Florence, Italy;
YPM Peabody Museum of Natural History, Yale University, New Haven, Connecticut, USA.

Systematic account

Family Ligiidae

Genus *Ligia* Fabricius, 1798

Ligia exotica Roux, 1828

Ligyda exotica; Fuentes 1914: 315.

Remarks. The record of this species by Fuentes (1914) needs to be confirmed since this littoral species has often been confused with other species in the past. Unfortunately, no specimens of *Ligia* have been recently collected from Rapa Nui, most likely due to lack of investigations along the littoral zones of the island.

Distribution. Pantropical.

Family Styloniscidae

Genus *Styloniscus* Dana, 1853

Styloniscus manuvaka sp. n.

<http://zoobank.org/00706DDB-9E9C-4DEF-AEA5-E9289287B7AB>

Figs 1A, 2–4

Styloniscus sp.; Wynne et al. 2014: 713, 714, fig. 2b.

Type material examined. Chile, Rapa Nui: 1 ♂ holotype, 2 ♂♂, 2 ♀♀, 1 juv. paratypes (MNHN), Mahunga Hiva Hiva, Cave Q15-070, fern-moss garden (entrance zone), direct intuitive search, 10.VII.2009, leg. J.J. Wynne; 2 ♂♂, 1 ♀, 2 juvs. paratypes (MZUF), same location, 50 m from entrance, direct intuitive search (on decomposing tree branches; twilight zone), 6.VIII.2011, leg. J.J. Wynne; 1 ♀ paratype (MNHN), same data; 1 ♂, 1 ♀ paratypes (BPBM), Mahunga Hiva Hiva, Cave Q15-074, skylight entrance (1st entrance NE of main entrance; entrance zone), 3.VII.2009,

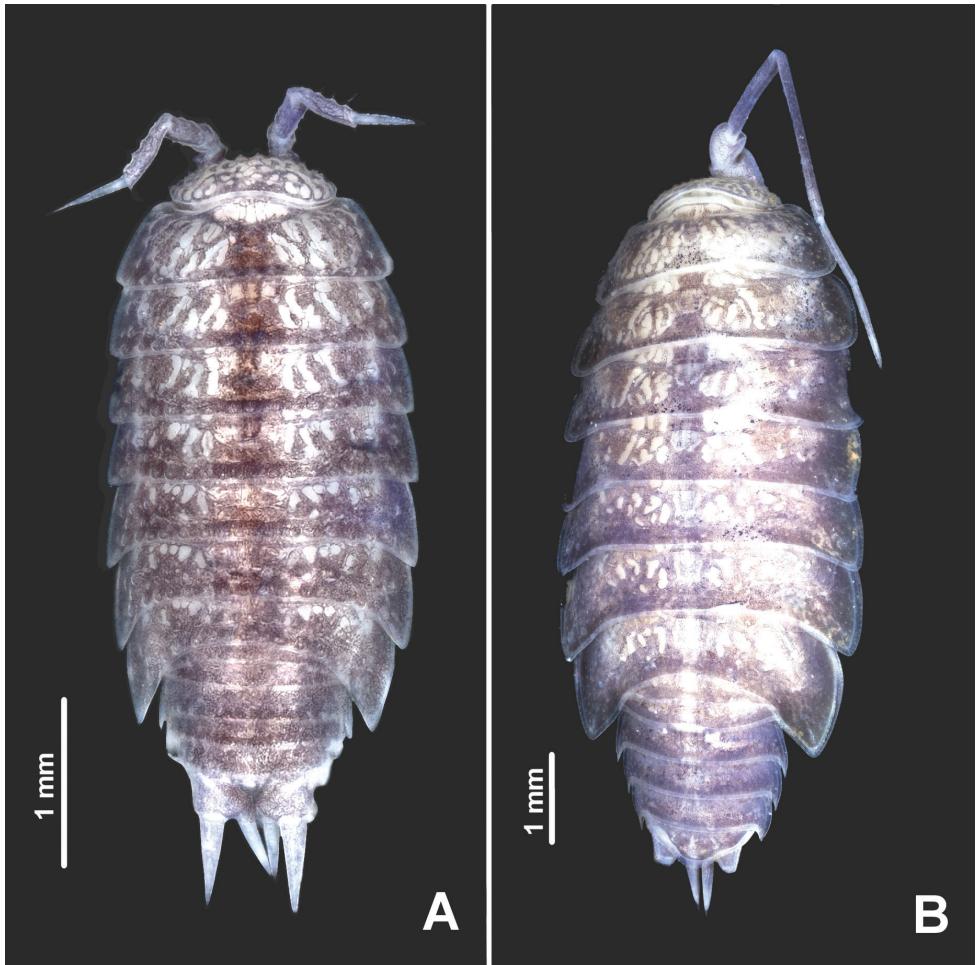


Figure 1. *Styloniscus manuvaka* sp. n.: **A** ♀ paratype in dorsal view. *Hawaiiioscia rapui* sp. n.: **B** ♀ paratype in dorsal view.

leg. J.J. Wynne; 1 ♀ paratype (BPBM), Mahunga Hiva Hiva, Cave Q15-119, timed search at trap 4A, 5.VII.2009, leg. J.J. Wynne; 1 ♂ paratype (BPBM), same location, Zone 2 (approx. cave deep zone), trap, fish entrails 1, 6.VIII.2011, leg. J.J. Wynne; 1 ♀ paratype (BPBM), Mahunga Hiva Hiva, Cave Q15-071, Zone 2 (approx. cave deep zone), bait trap, fish entrails 1, 7.VIII.2011, leg. J.J. Wynne; 1 ♀ paratype (BPBM), Cave Q15-067, fern-moss garden (entrance zone), direct intuitive search, 4.XII.2008, leg. J.J. Wynne.

Additional material examined. French Polynesia, Bass Islands (Austral Islands), Rapa Iti Island: 4 ♂♂ (YPM), Pumarua-Maurua Ridge, Pumarua and some west, 500–620 m, from dead leaves of the bird's nest fern, *Asplenium nidus*, 9.I.1980, leg. G. Paulay.

Description. Maximum length: ♂ 4 mm, ♀ 4.2 mm. Dorsum brown with the usual yellow muscle spots (Fig. 1A). Body ovoid with pleon narrower than pereon

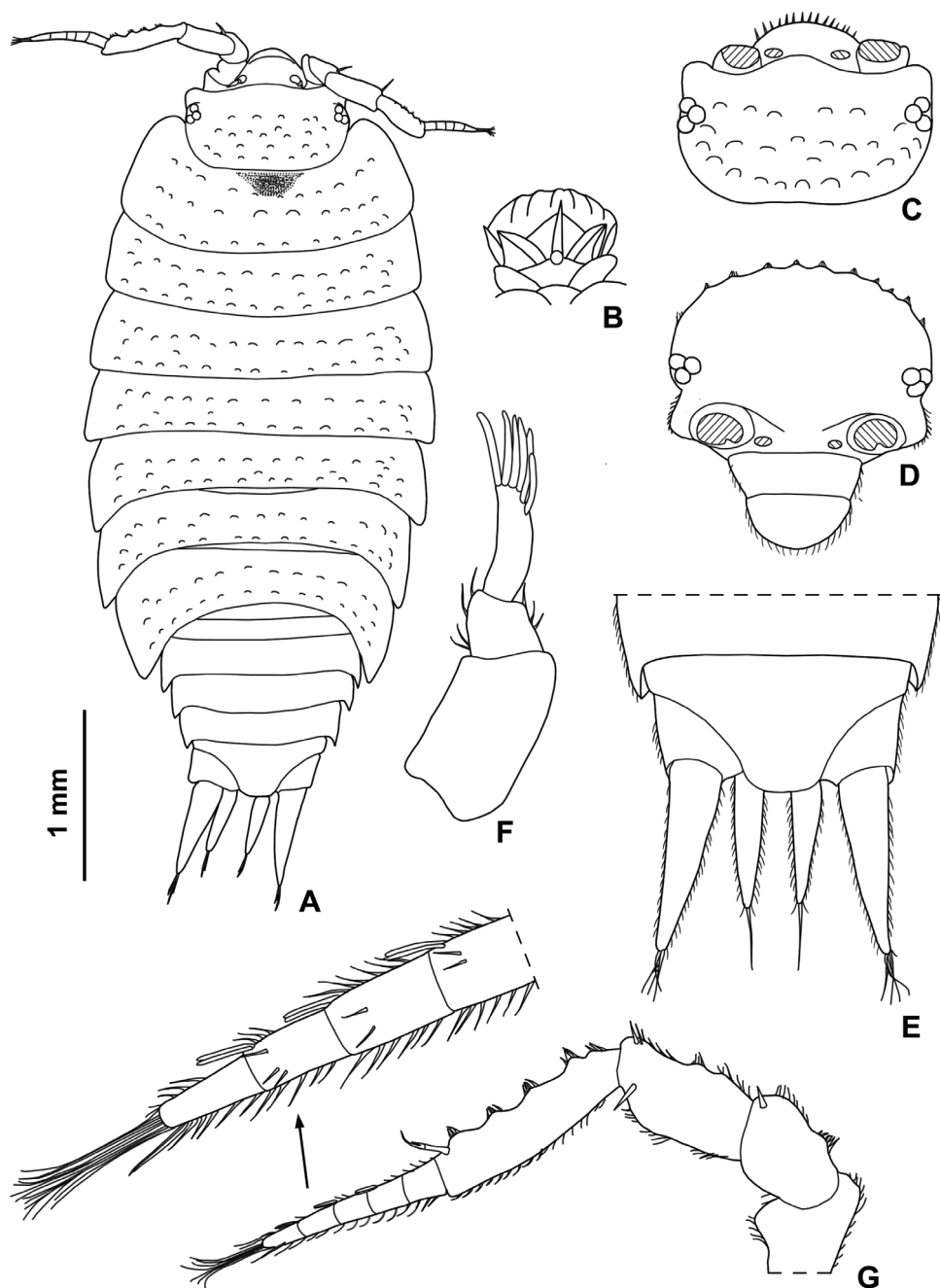


Figure 2. *Stytoniscus manuvaka* sp. n., ♀ paratype: **A** adult specimen in dorsal view **B** dorsal scale-seta **C** cephalon in dorsal view **D** cephalon in frontal view **E** pleonite 5, telson and uropods **F** antennula **G** antenna.

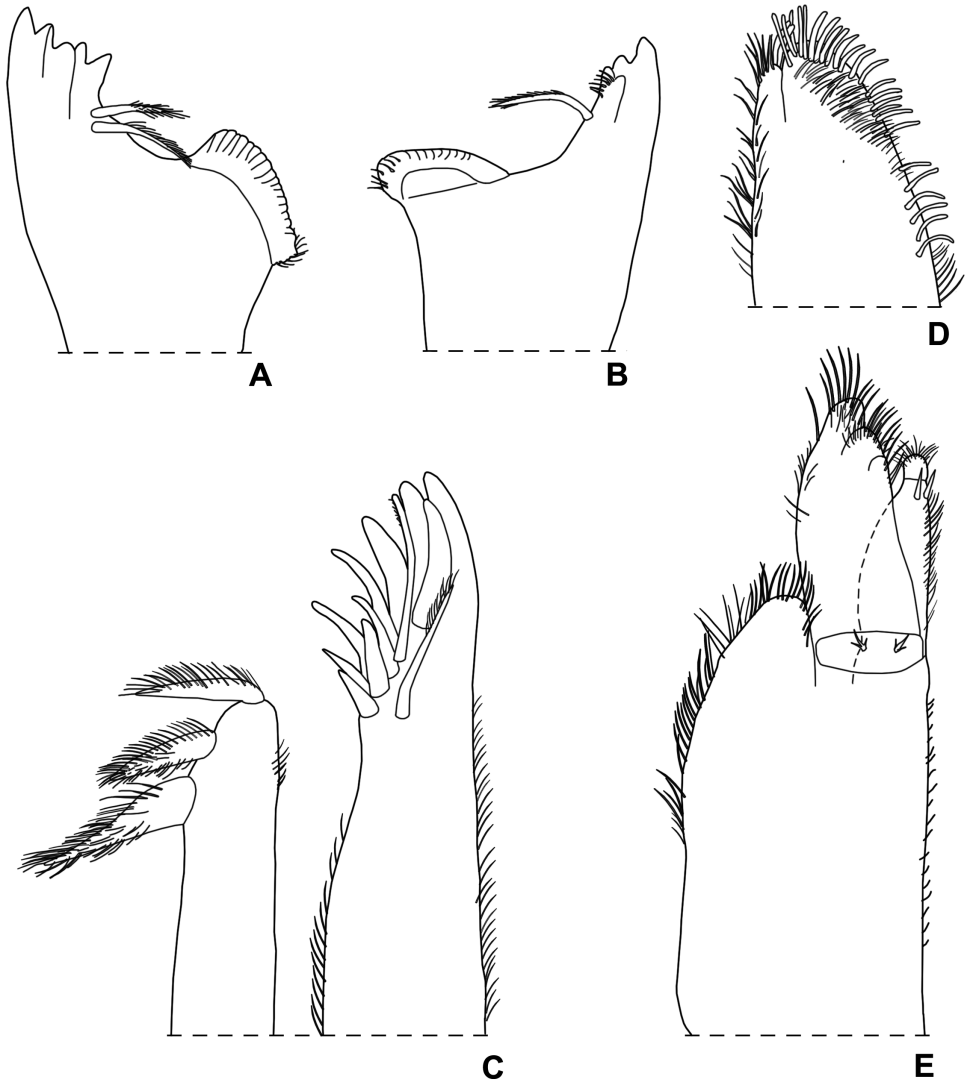


Figure 3. *Styloniscus manuvaka* sp. n., ♀ paratype: **A** left mandible **B** right mandible **C** maxillula **D** maxilla **E** maxilliped.

(Figs 1A, 2A). Vertex and pereon distinctly granulated with granulations arranged on three rows on pereonite 1 and two rows on pereonites 2–7; pleon and telson smooth. Dorsal surface with scale-setae as in Fig. 2B. Cephalon (Fig. 2C, D) with obtuse middle lobe slightly protruding frontwards compared with rounded lateral lobes; eye consisting of three ommatidia in a triangle. Pleonites 3–5 reduced with small posterior points. Telson (Fig. 2E) with concave sides and truncate apex. Antennula (Fig. 2F) with second article shorter than first and third; third article with 6 long aesthetascs at apex. Antenna (Fig. 2G) with flagellum as long as fifth article of peduncle; flagellum

cone-shaped, consisting of 5 articles with the second, third and fourth article bearing two aesthetascs each. Left mandible (Fig. 3A) with 2 penicils; right mandible (Fig. 3B) with 1 penicil. Maxillula (Fig. 3C) outer branch with 10 simple teeth and 2 long stalks; inner branch with 3 penicils. Maxilla (Fig. 3D) apically bilobate, inner lobe wider than outer lobe and bearing strong setae on its margin. Maxilliped (Fig. 3E) endite with a stout apical penicil; basal article of the palp with 2 setae. Pereopods 6 and 7 with a distinct water conducting system (Fig. 4B,C) on merus, carpus and propodus, and on basis, ischium and merus, respectively.

Male. Pereopod 1 (Fig. 4A) merus and carpus with a line of short scales on sternal margin. Pereopod 7 (Fig. 4C) ischium enlarged in the distal part, forming a flat rounded lobe with two short and stout setae on tergal margin, sternal margin almost straight; propodus with numerous long and thin setae on tergal margin. Genital papilla (Fig. 4D) with rounded and enlarged distal part. Pleopod 1 (Fig. 4D) exopodite triangular, as wide as long, with rounded posterior margin; endopodite with flagelliform distal segment, about twice as long as basal one and slightly enlarged at apex. Pleopod 2 (Fig. 4E) exopodite very short, rectangular, about twice wider than long; endopodite with distal segment about seven times longer than basal one, with tapering apical part slightly bent outwards, acute apex.

Etymology. The species name is a combination of two Rapanui terms, *manu* and *vaka*. *Manu* is “bug” and *vaka* is “canoe” or “boat”; when combined this translates to “canoe bug.” Based upon the identification of this species, and a collembolan (*Lepidocyrtus olena* Christiansen & Bellinger, 1992) previously known from the Hawaiian Islands only, Wynne et al. (2014) suggested both of these animals may have been dispersed by the ancient Polynesians as they transported and transplanted cultivars (called “canoe plants”), such as banana, taro and sugar cane, throughout the South Pacific islands.

Remarks. At present the genus *Styloniscus* includes about 45 species distributed in the tropics and the southern hemisphere (Schmalfuss 2003; Nunomura 2007; Taiti 2014). The new species is characterized by the male pereopod 7 ischium enlarged in the distal part with a flat rounded lobe. A similar character is present also in a species from Omaio, North Island, New Zealand, identified by Vandel (1952) as *Styloniscus otakensis* (Chilton, 1901). The specimens redescribed and illustrated by Vandel certainly do not belong to *S. otakensis* according to the redescription of this species provided by Green (1971) on the basis of the type material studied by Chilton (1901) and on topotypic material (Dunedin, South Island). In fact, the male pereopod 7 ischium does not show any distinct lobe (compare fig. 31 in Green 1971 with fig. 37 in Vandel 1952), and the shapes of the male pleopod 1 exopodite and pleopod 2 endopodite are significantly different (compare figs 29 and 30 in Green 1971 with figs 38 and 39A in Vandel 1952). Thus, the specimens from Omaio must belong to a distinct species yet to be named. *Styloniscus manuvaka* sp. n. differs from *S. otakensis* sensu Vandel nec Chilton in having 6 instead of 5 aesthetascs at the apex of the antennula, 5 instead of 4 flagellar articles of the antenna, the male pereopod 7 ischium with two, instead of one, stout setae on the tergal margin, and the male pleopod 2 endopodite with a thicker distal part.

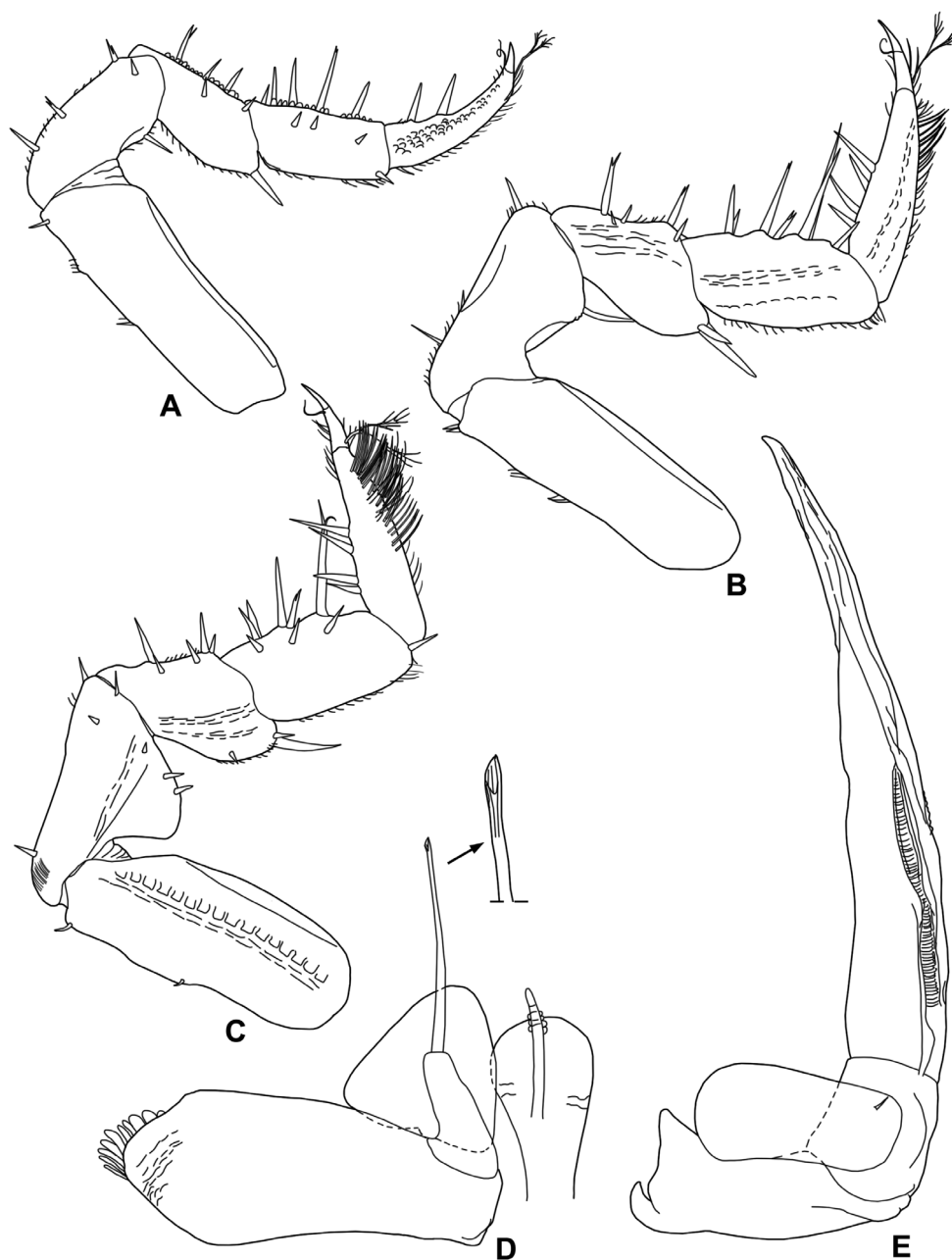


Figure 4. *Styloniscus manuvaka* sp. n., ♂ paratype: **A** pereopod 1 **B** pereopod 6 **C** pereopod 7 **D** genital papilla and pleopod 1 **E** pleopod 2.

On Rapa Nui, *Styloniscus manuvaka* sp. n. is presently restricted to the cave environment, but is not troglomorphic (cave-adapted). This animal was detected within the fern-moss gardens (entrance zone) of three caves, but also occurred within the

twilight and cave deep zones. This species was not detected during the surface sampling work conducted in 2009, nor has it been identified during previous invertebrate inventory work (e.g., Fuentes 1914, Olalquiaga 1946, Kuschel 1963, Campos and Peña 1973). The species also occurs on Rapa Iti, Bass Islands, where it is not restricted to the cave environment. This species is considered a Polynesian endemic and it might be present also on other Pacific islands.

Distribution. Presently known from Rapa Nui and Rapa Iti.

Family Philosciidae

Genus *Hawaiioscia* Schultz, 1973

Hawaiioscia rapui sp. n.

<http://zoobank.org/56E14D72-3CF5-4E39-A655-15659F01B67A>

Figs 1B, 5–7

Hawaiioscia sp.; Wynne et al. 2014: 714, 716, fig. 2a.

Type material examined. Chile, Rapa Nui: 1 ♂ holotype, 2 ♀♀ paratypes (MNHN), Mahunga Hiva Hiva, Cave Q15-034, pitfall trap 5A (twilight zone) 12.VII.2009, leg. J.J. Wynne; 1 ♀ paratype (MZUF), 1 ♀ paratype (BPBM), same data, pitfall trap 7A (approx. deep zone); 1 ♂ Paratype (MZUF), Mahunga Hiva Hiva, Cave Q15-076/078, pitfall trap 2C (light zone), 4.VII.2009, leg. J.J. Wynne.

Description. Maximum length: ♂ and ♀ 7.5 mm. Dorsum light brown with the usual muscle spots (Fig. 1B). Body flat, ovoidal, with pleon narrower than pereon, outline as in Fig. 5A. Dorsal body surface finely granulated with small triangular scale-setae (Fig. 5B). Pereonites with no sulcus marginalis, gland pores absent. Noduli laterales (Fig. 5C, G) clearly visible, inserted on a small tubercle and disposed as follows: two on the cephalic vertex, one per side on pereonites 1–6 with that on the fourth pereonite much more distant from the lateral margin of the segment, and two per side on pereonite 7. Cephalon (Fig. 5D–F) with short triangular lateral lobes not protruding frontwards compared with the obtuse middle lobe; frontal and supra-antennal lines absent; eyes small, consisting of eight ommatidia. Pleon epimera reduced but with distinct posterior points (Fig. 5A,H). Telson (Fig. 5H) triangular, about twice as wide as long, with broadly rounded apex. Antennula (Fig. 5I) of 3 articles, second article slightly shorter than first and third; third article bearing two rows of 7 and 2 aesthetascs each, and 2 apical aesthetascs. Antenna (Fig. 6A) long and thin, reaching back rear margin of pereonite 6; flagellum as long as fifth peduncular article, first flagellar article distinctly longer than second and third, with two rows of 4 to 6 aesthetascs on each second and third article. Mandibles (Fig. 6B,C) with molar penicil semidichotomized, i.e. consisting of 3–4 setae on a common stem; left mandible with 2+1 and right mandible with 1+1 free penicils. Maxillula (Fig. 6D) outer branch with 5+6 teeth, all simple; inner branch with two stout subequal penicils. Maxilla (Fig. 6E) apically setose and bilobate with outer lobe wider

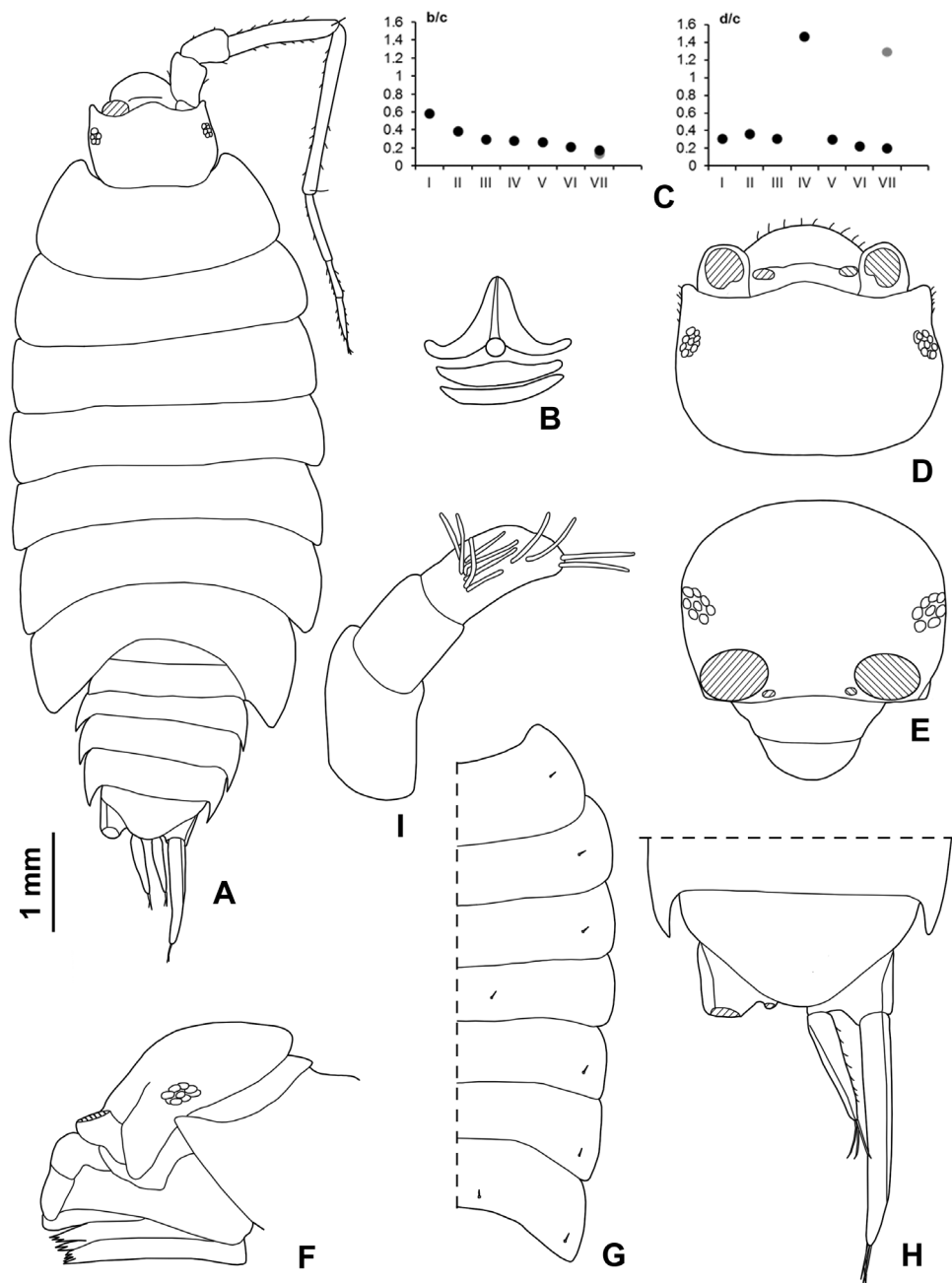


Figure 5. *Hawaiioscia rapui* sp. n., ♂ holotype: **A** adult specimen in dorsal view. ♀ paratype: **B** dorsal scale-seta **C** co-ordinates of noduli laterales **D** cephalon in dorsal view **E** cephalon in frontal view **F** cephalon in lateral view **G** pereonites with noduli laterales **H** pleonite 5, telson and uropods **I** antennula.

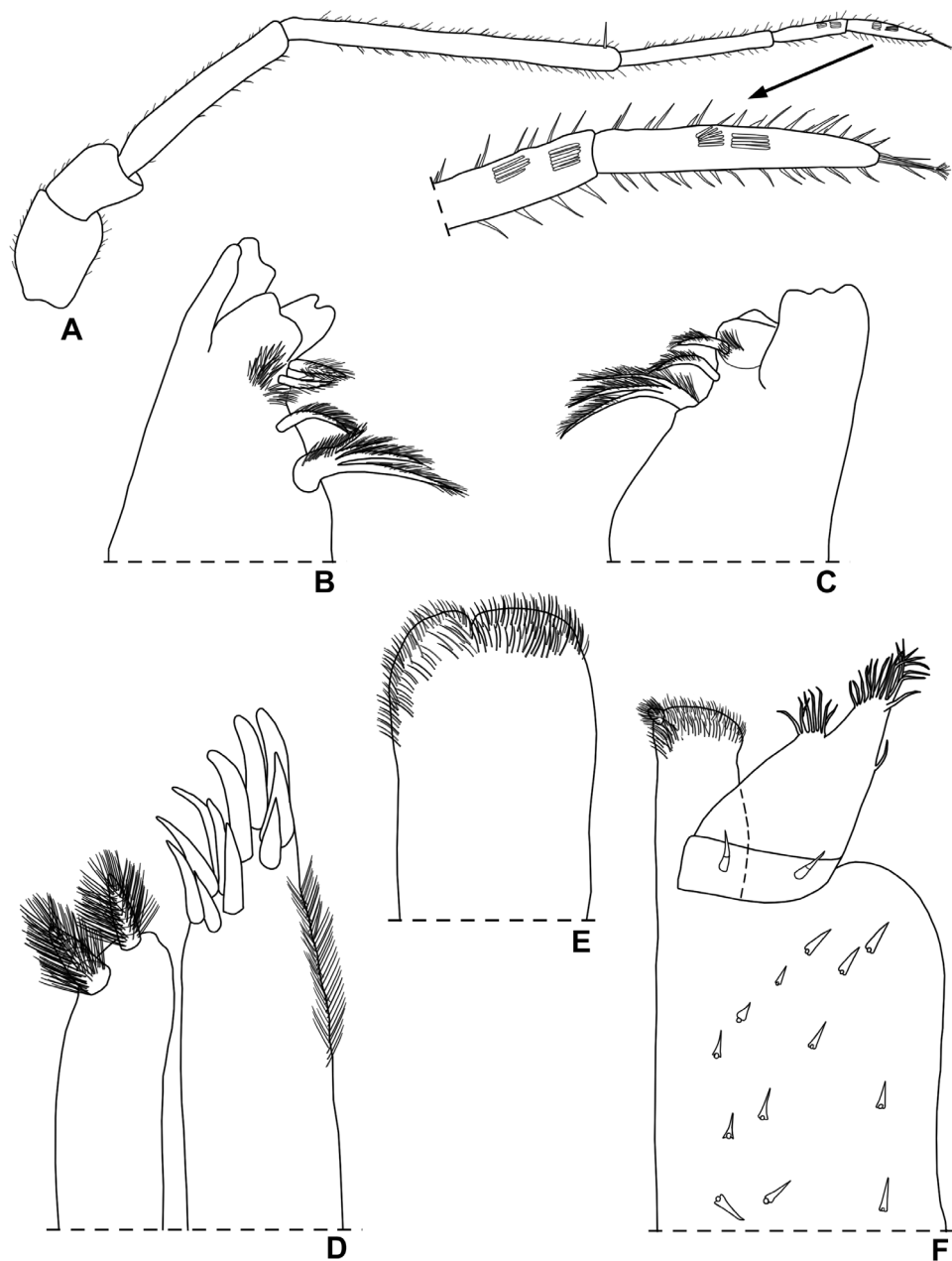


Figure 6. *Hawaiiioscia rapui* sp. n., ♀ paratype: **A** antenna **B** left mandible **C** right mandible **D** maxillula **E** maxilla **F** maxilliped.

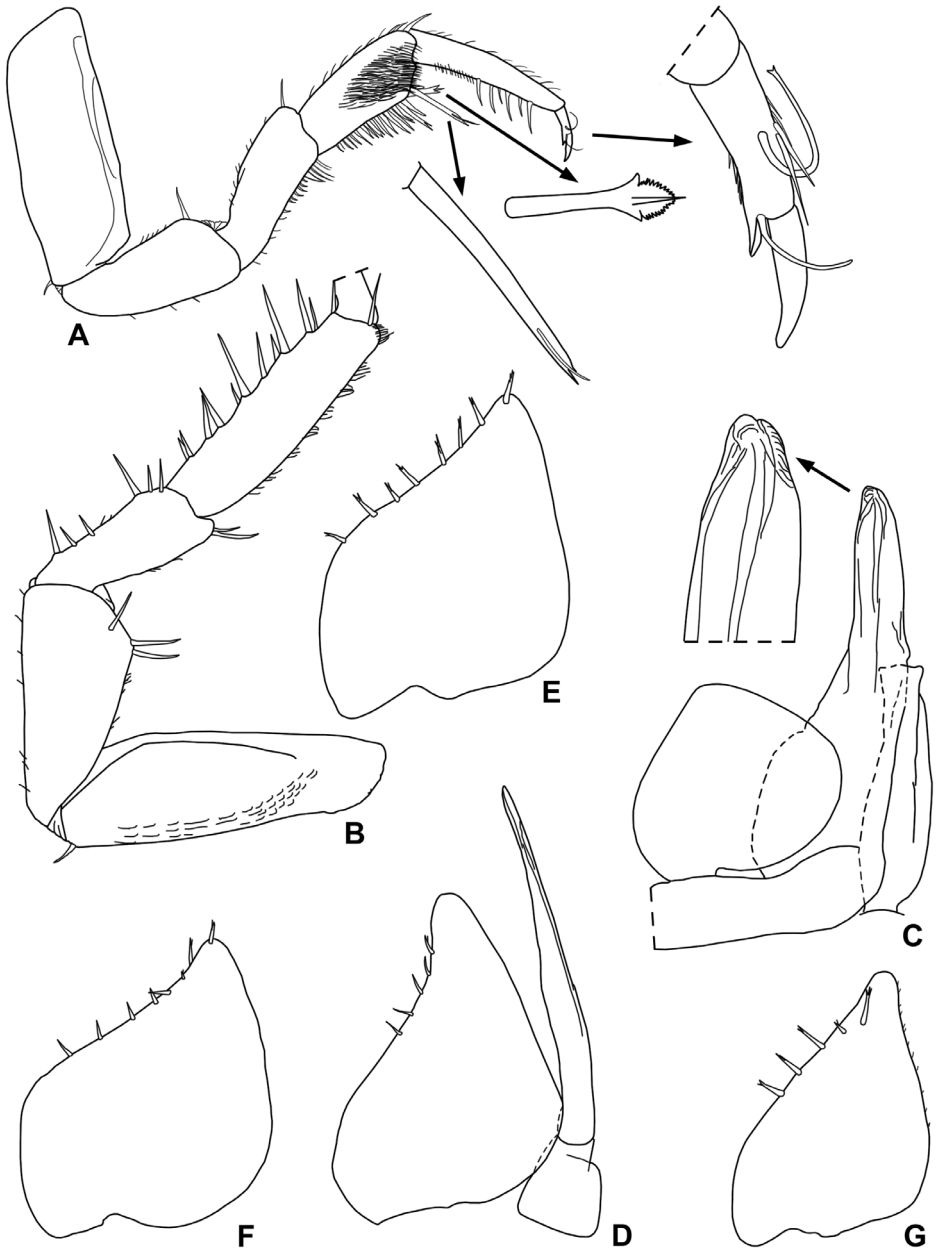


Figure 7. *Hawaiioscia rapui* sp. n., ♂ paratype: **A** pereopod 1 **B** pereopod 7 **C** genital papilla and pleopod 1 **D** pleopod 2 **E** pleopod 3 exopodite **F** pleopod 4 exopodite **G** pleopod 5 exopodite.

than inner one. Maxilliped (Fig. 6F) endite apically setose and bearing a large penicil at medial corner, proximal article of palp bearing 2 strong setae. Pereopods with elongated articles and flagelliform dactylar and unguis setae (Fig. 7A). Pleopodal exopodites with

no trace of respiratory structures. Uropod (Fig. 5H) protopod with a /\-shaped groove on outer margin; insertion of endopodite slightly proximal to that of exopodite.

Male. Pereopod 1 carpus with a brush of trifold spines on sternal margin (Fig. 7A). Pereopod 7 (Fig. 7B) with no peculiar modifications, ischium with sternal margin straight. Pleopod 1 (Fig. 7C) exopodite cordiform, with a broadly rounded apex; endopodite with thickset distal part, straight with rounded apex. Pleopod 2 (Fig. 7D) with exopodite triangular, shorter than endopodite and bearing 5 setae on outer margin. Pleopods 3-5 exopodite as in Fig. 7E-G.

Etymology. The new species is named after Sergio Rapu Haoa, a humanitarian who has furthered cultural and archeological knowledge of Rapa Nui. Sergio was Rapa Nui's first governor of Rapanui descent and the first director and curator of Museo Antropológico P. Sebastián Englert on Rapa Nui. He is also a world-renowned Rapa Nui archaeologist and purveyor of Rapa Nui culture. He graciously provided logistical support to the second author and his research teams while on Rapa Nui.

Remarks. Prior to discovering this new species, the genus *Hawaiioscia* consisted of four troglomorphic species restricted to lava tube caves on the Hawaiian Islands (Schultz 1973; Taiti and Howarth 1997): *H. parvituberculata* Schultz, 1973 from Maui, *H. microphthalmia* Taiti & Howarth, 1997 from O'ahu, *H. paeninsulae* Taiti & Howarth, 1997 from Molokai, and *H. rotundata* Taiti & Howarth, 1997 from Kauai. No epigeal species in this genus were previously known. The new species shows all the characters of the genus *Hawaiioscia* with the sole exception of the molar penicil of the mandible which is semidichotomized instead of simple as in all the others species from Hawai'i. Considering that all the most important characters (number and position of noduli laterales, maxillular teeth, penicil on maxillipedal endite, uropod and shape of male pleopod 1) are shared with all the other *Hawaiioscia* species, we include the new species in this genus.

Specimens from this new species were collected from both within the entrance zone of one cave and the twilight zone of another cave. It is important to note, this species does not have troglomorphic characteristics, such as body depigmentation or eye reduction as do other congeners within *Hawaiioscia*. However, as with *Styloniscus manuvaka* sp. n., this new species was not detected during the surface sampling effort, nor has it been previously identified by earlier entomological surveys of the island. Thus, we believe this animal to be restricted to cave environment on Rapa Nui.

Distribution. Presently endemic to Rapa Nui.

Family Platyarthridae

Genus *Trichorhina* Budde-Lund, 1908

Trichorhina tomentosa (Budde-Lund, 1893)

Material examined. Chile, Rapa Nui: 1 ♀ (BPBM), Mahunga Hiva, Cave Q15-074, pitfall trap 1B (light zone), 30.VI.2009, leg. J.J. Wynne.

Distribution. Pantropical. Introduced to greenhouses worldwide.

Family Porcellionidae**Genus *Porcellionides* Miers, 1877*****Porcellionides pruinosus* (Brandt, 1833)**

Material examined. Chile, Rapa Nui: 2 ♂♂, 3 ♀♀ (AMNH 18360), Cannibal Cave, 21.VIII.1999, leg. C. Boyko, J. Tanacredi, S. Reanier, H. Tonnemacher and S. Lopez; 1 ♀ (BPBM), Mahunga Hiva Hiva, Cave, Q15-074, time search at 1A (light zone), 30.VI.2009, leg. J.J. Wynne; 1 ♂, 3 ♀♀ (BPBM), same location, leaf litter beneath skylight, (3rd entrance NW of main entrance; entrance zone), direct intuitive search, 2.VIII.2011, leg. J.J. Wynne; 1 ♀ (BPBM), Mahunga Hiva Hiva, Cave Q15-067, fern-moss garden (entrance zone), direct intuitive search, 10.VII.2009, leg. J.J. Wynne; 1 ♂ (BPBM), Mahunga Hiva Hiva, Cave Q15-070, fern-moss garden (entrance zone), direct intuitive search, 10.VII.2009, leg. J.J. Wynne.

Distribution. Cosmopolitan species of Mediterranean origin.

Genus *Porcellio* Latreille, 1804***Porcellio scaber* Latreille, 1804**

Porcellio scaber; Fuentes 1914: 315; Wynne et al. 2014: 716.

Material examined. Chile, Rapa Nui: 1 ♀ (AMNH 18362), VIII.1999, leg. C. Boyko, J. Tanacredi, S. Reanier, H. Tonnemacher and S. Lopez; 2 ♂♂, 1 ♀ (AMNH 18363), Maunga Tangaroa, 20.VIII.1999, leg. C. Boyko, J. Tanacredi, S. Reanier, H. Tonnemacher and S. Lopez; 2 ♂♂, 3 ♀♀ (AMNH 18365), Ana te Pahu, 21.VIII.1999, leg. C. Boyko, J. Tanacredi, S. Reanier, H. Tonnemacher and S. Lopez; 2 ♂♂, 13 ♀♀ (AMNH 18364), Poike region, 25.VIII.1999, leg. C. Boyko, J. Tanacredi, S. Reanier, H. Tonnemacher and S. Lopez; 1 ♂ (BPBM), Mahunga Hiva Hiva, surface in front of Cave Q15-038, opportunistic collection (eastern-most collapse pit, southern extent near cave entrance), 18.VIII.2008, J.J. Wynne; 1 ♂ (BPBM), Mahunga Hiva Hiva, surface grid 2, 27°06'41.3"S, 109°25'09.2"W, pitfall trap 21, 10.VII.2009, leg. J.J. Wynne; 1 juv. (BPBM), Mahunga Hiva Hiva, surface in front of Cave Q15-038, timed search at 1C (eastern-most collapse pit on southern extent near cave entrance), 20.VIII.2008, leg. J.J. Wynne; 3 ♂♂ (BPBM), Cave Q15-038, fern-moss garden (entrance zone), direct intuitive search, 4.XII.2008, leg. J.J. Wynne; 1 ♂, 2 ♀♀ (BPBM), Mahunga Hiva Hiva, Cave Q15-076/078, opportunistic collection, 4.VII.2009, leg. J.J. Wynne; 1 ♂, 2 ♀♀ (BPBM), Mahunga Hiva Hiva, Cave Q15-070, fern-moss garden (entrance zone), direct intuitive search, 13.VII.2009, leg. J.J. Wynne; 2 ♂♂, 1 ♀ (BPBM), Mahunga Hiva Hiva, Cave Q15-074, skylight entrance (1st entrance NW of main entrance; entrance zone), opportunistic collection, 3.VII.2009, leg. J.J. Wynne; 1 juv. (BPBM), Ma-

hunga Hiva Hiva, Cave Q15-067, fern-moss garden (entrance zone), direct intuitive search, 10.VII.2009, leg. J.J. Wynne; 1 ♀ (BPBM), Mahunga Hiva Hiva, Cave Q15-127, entrance zone, pitfall trap 1A, 5.VII.2009, leg. J.J. Wynne; 1 ♂ (BPBM), same data, pitfall traps 1B; 1 ♂, 1 ♀ (BPBM), Mahunga Hiva Hiva, surface grid 1, 27°06'53.1"S, 109°24'20.3"W, pitfall trap 3, 10.VII.2009, leg. J.J. Wynne; 1 ♂, 1 ♀ (BPBM), same location, pitfall trap 10, 10.VII.2009, leg. J.J. Wynne; 2 ♂♂, 5 ♀♀ (BPBM), same location, pitfall trap 12, 10.VII.2009, leg. J.J. Wynne.

Distribution. Cosmopolitan species of western European origin.

Porcellio laevis Latreille, 1804

Material examined. Chile, Rapa Nui: 2 ♂♂ (AMNH 18362), VIII.1999, leg. C. Boyko, J. Tanacredi, S. Reanier, H. Tonnemacher and S. Lopez; 2 ♂♂, 1 juv. (AMNH 18363), Maunga Tangaroa, 20.VIII.1999, leg. C. Boyko, J. Tanacredi, S. Reanier, H. Tonnemacher and S. Lopez; 1 ♂, 1 ♀ (AMNH 18365), Cave Q15-074, location within cave not reported, 21.VIII.1999, leg. C. Boyko, J. Tanacredi, S. Reanier, H. Tonnemacher and S. Lopez; 2 ♂♂, 7 ♀♀ (AMNH 18361), La Pérouse Bay, 21.VIII.1999, leg. C. Boyko, J. Tanacredi, S. Reanier, H. Tonnemacher and S. Lopez.

Distribution. Cosmopolitan species of Mediterranean origin.

Family Armadillidiidae

Genus *Armadillidium* Brandt, 1831

Armadillidium vulgare (Latreille, 1804)

Armadillidium vulgare; Fuentes, 1914: 315.

Material examined. Chile, Rapa Nui: 1 ♂ (AMNH 18362), VIII.1999, leg. C. Boyko, J. Tanacredi, S. Reanier, H. Tonnemacher and S. Lopez; 6 ♂♂, 5 ♀♀ (AMNH 18365), Cave Q15-074, location within cave not reported, 21.VIII.1999, leg. C. Boyko, J. Tanacredi, S. Reanier, H. Tonnemacher and S. Lopez; 3 ♂♂, 9 ♀♀ (AMNH 18366), Hotel Hanga Roa, Hanga Roa, 21.VIII.1999, leg. C. Boyko, J. Tanacredi, S. Reanier, H. Tonnemacher and S. Lopez; 2 ♂♂, 2 ♀♀ (AMNH 18364), Poike region, 25.VIII.1999, leg. C. Boyko, J. Tanacredi, S. Reanier, H. Tonnemacher and S. Lopez; 1 ♂, 1 ♀ (BPBM), Mahunga Hiva Hiva, surface in front of Cave Q15-038, timed search at 1B (eastern-most collapse pit, southern extent near cave entrance), 20.VIII.2008, leg. J.J. Wynne; 1 ♀ (BPBM), Cave Q15-038, fern-moss garden (entrance zone), direct intuitive search, 21.XIII.2008, leg. J.J. Wynne; 2 ♀♀ (BPBM), Mahunga Hiva Hiva, surface grid 2, 27°06'41.3"S, 109°25'09.2"W, pitfall trap 23, 10.VII.2009, leg. J.J. Wynne; 1 ♂ (BPBM), surface grid 1, 27°06'53.1"S, 109°24'20.3"W, pitfall trap 17, 10.VII.2009, leg. J.J. Wynne; 3 ♀♀ (BPBM), same

location, pitfall trap 19, 10.VII.2009, leg. J.J. Wynne; 1 ♂, 3 ♀♀ (BPBM), same location, pitfall trap 4, 10.VII.2009, leg. J.J. Wynne.

Distribution. Cosmopolitan species of Mediterranean origin.

Family Armadillidae

Genus *Venezillo* Verhoeff, 1928

Venezillo parvus (Budde-Lund, 1885)

Material examined. Chile, Rapa Nui: 2 ♂♂ (BPBM), Mahunga Hiva Hiva, surface grid 2, 27°06'41.3"S, 109°25'09.2"W, pitfall trap 39, 10.VII.2009, leg. J.J. Wynne; 1 ♂ (BPBM), same location, pitfall trap 32, 10.VII.2009, leg. J.J. Wynne.

Distribution. Widespread in tropical and subtropical regions. It has been introduced to European greenhouses. For diagnostic figures of this species see Schmidt (2003).

Key to species of terrestrial isopods from Rapa Nui

- 1 Antennal flagellum with >10 articles; eye with >100 ommatidia... *Ligia exotica*
- Antennal flagellum with <6 articles, eye with <30 ommatidia 2
- 2 Antennal flagellum of 5 articles..... *Styloniscus manuvaka*
- Antennal flagellum of 3 or 2 articles 3
- 3 Antennal flagellum of 3 articles..... *Hawaiioscia rapui*
- Antennal flagellum of 2 articles..... 4
- 4 Body depigmented; eye consisting of a single ommatidium *Trichorbina tomentosa*
- Body pigmented; eye consisting of several ommatidia 5
- 5 Body slightly convex, unable to roll up into a ball..... 6
- Body strongly convex, able to roll up into a perfect ball 8
- 6 Cephalon with a V-shaped suprantennal line; pereonite 1 with posterior margin straight and posterior corners rounded..... *Porcellionides pruinosis*
- Cephalon without suprantennal line; pereonite 1 with posterior margin more or less concave at sides and posterior corners right-angled or acute 7
- 7 Dorsal body surface smooth..... *Porcellio laevis*
- Dorsal body surface distinctly granulated..... *Porcellio scaber*
- 8 Cephalon with a triangular frontal scutellum; telson trapezoidal; uropod exopodite flattened, filling the gap between telson and pleonite 5 *Armadillidium vulgare*
- Cephalon with no frontal scutellum; telson hour-glass shaped; uropod protopodite flattened, filling the gap between telson and pleonite 5 *Venezillo parvus*

Discussion

Nine species of terrestrial isopods are known from Rapa Nui: *Ligia exotica*, *Styloniscus manuvaka* sp. n., *Hawaiioscia rapui* sp. n., *Trichorhina tomentosa*, *Porcellionides pruinosus*, *Porcellio laevis*, *P. scaber*, *Armadillidium vulgare*, and *Venezillo parvus*.

Only one species (*Ligia exotica*) is littoral, halophilic, and widely distributed along coastal habitats in the tropics. We have not examined any specimens belonging to this species and its identification needs to be confirmed. Littoral habitats have not been adequately sampled on Rapa Nui and other littoral species may also be present on the island. Two species (*Trichorhina tomentosa* and *Venezillo parvus*) have a wide distribution in the tropics, and four species of European or Mediterranean origin (*Porcellionides pruinosus*, *Porcellio laevis*, *P. scaber*, and *Armadillidium vulgare*) are now cosmopolitan. All of these species were introduced to Rapa Nui due to human activities. *Styloniscus manuvaka* sp. n. and *Hawaiioscia rapui* sp. n. are Polynesian and Rapa Nui endemics, respectively.

Given that few native arthropod species remain on Rapa Nui (Wynne et al. 2014), the two new isopod species are a significant contribution to the island's natural history. Together with the other eight endemics described by Bernard et al. (2015), Mockford and Wynne (2013) and Jordana and Baquero (2008), these disturbance relicts have persisted despite several hundred years of extreme environmental change and interactions with non-native species (Wynne et al. 2014).

Despite their persistence, these endemic species are considered imperiled (Wynne et al. 2014). *S. manuvaka* and *H. rapui* may be operating under extinction debts (Triantis et al. 2010). This may occur once a population has become isolated following a significant environmental perturbation, such as habitat loss or fragmentation (Tilman et al. 1994). Habitat loss has occurred dramatically and at an island-wide scale on Rapa Nui. Both *S. manuvaka* and *H. rapui* were detected in low numbers. Neither of these species were detected during earlier inventory work (see Fuentes 1914, Olalquiaga 1946, Kuschel 1963, Campos and Peña 1973) or our surface sampling effort.

Further, the combined effects of global climate change and interactions with non-native species may further threaten the persistence of these endemic isopods. Competition with non-native species has been identified as threatening the persistence of surface-dwelling endemic arthropods on other island ecosystems (see Chown et al. 2007, Fordham and Brook 2010, Vitousek et al. 1997). Increased drought conditions are predicted for the sub-tropics (IPCC 2013) and other Polynesian islands (Chu et al. 2010). We also know non-native species represent the majority of known arthropods on Rapa Nui. For example, of the seven known non-native isopod species, the cosmopolitan *P. scaber* was detected in the greatest numbers in both surface sampling and within caves (Wynne et al. 2014). Additionally, *P. scaber* is a well-established non-native species being first detected by Fuentes (1914). In Hawai'i, *P. scaber* is considered to be an invasive species and one of the most damaging non-native arthropods in the native ecosystems (Howarth et al. 2001).

Conservation and management of these endemic terrestrial isopods (as well as the other endemic species) and their habitats should be a high priority for the Rapanui community, policy makers and resource managers. Given the concerns associated with global climate change and non-native invasive species, a captive breeding program of these new species is recommended. Captive breeding of isopods is relatively easy and inexpensive (Sutton 1972). Such a program may be developed in collaboration with CONAF, Museo Antropológico P. Sebastián Englert de Rapa Nui and potentially secondary school classrooms on the island. By captively breeding these animals in a variety of locations, their long-term persistence may be somewhat safeguarded, and will facilitate the establishment of viable populations for future reintroduction efforts. Additionally, this will provide an opportunity for researchers to obtain information associated with the life history characteristics of these endemic species. Also, once large captive populations are established, experiments examining competition with the non-native isopods may be performed.

Northup and Welbourn (1997) proposed that moss garden habitats in New Mexico lava tube caves may serve as a source habitat for arthropods colonizing cave deep zones. Fern-moss gardens within Rapa Nui caves may provide this same function. All known congeners of *H. rapui* sp. n. are cave-adapted isopods from the Hawaiian Islands. *H. rapui* sp. n. was detected within both entrance and twilight zones. If this species persists, it is possible parapatric speciation may occur as has been suggested for other *Hawaiioscia* species from the Hawaiian Islands (Rivera et al. 2002).

Finally, we know little concerning the distributions of these endemic isopods. We recommend additional surveys be conducted in other caves on the island, as well as in other habitats likely to support terrestrial isopods (and endemic arthropods, in general). This final step will provide resource managers with the ability to better characterize endemic isopod habitat, and to further improve our understanding of the distribution of these animals on Rapa Nui.

Acknowledgements

JJW wishes to thank Ninoska Cuadros Hucke, Susana Nahoe, and Enrique Tucky of CONAF-Parque Nacional Rapa Nui and Consejo de Monumentos, Rapa Nui, for administrative and logistical support. Cristian Tambley of Campo Alto Operaciones and Sergio Rapu provided additional logistical assistance. Javier Les of the Sociedad de Ciencias Espeleológicas and Andrzej Ciszewski of the Polish Expedition team provided cave maps. Kyle Voyles co-developed the cave-dwelling arthropod sampling protocol. Christina Colpitts, Lynn Hicks, Bruce Higgins, Alicia Ika, Talina Konotchick, Scott Nicolay, Knutt Petersen, Lázero Pakarati, Victoria Pakarati Hotus, Pete Polsgrove, Dan Ruby, and Liz Ruther were invaluable in the field. The Explorers Club and the National Speleological Society partially funded the field research. Color images of *S. manuvaka* sp. n. and *H. rapui* sp. n. were provided by Caitlin Chapman and Neil Cobb, Colorado Plateau Museum of Arthropod Biodiversity (CPMAB), Northern Arizona University.

Jacob Higgins formerly of CPMAB assisted with identifications of known isopod species. Julianna Rapu provided suggestions on etymology and confirmations of Rapa Nui place names. We are also grateful to Dr. Christopher Boyko and Dr. Eric A. Lazo-Wasem for the loan of the material deposited in AMNH and YPM, respectively.

References

- Bernard EC, Soto-Adames FN, Wynne JJ (2015) Collembola of Rapa Nui (Easter Island) with descriptions of five endemic cave-restricted species. *Zootaxa* 3949: 239–267.
- Brandt JF (1831) Isopoda. In: Brandt JF, Ratzeburg JTC (Eds) *Medizinische Zoologie oder getreue Darstellung und Beschreibung der Thiere, die in der Arzneimittellehre in Betracht kommen, in systematischer Folge herausgegeben*. Trowitzsch und Sohn, Berlin 2: 70–84, pls 12–13.
- Budde-Lund G (1885) *Crustacea Isopoda terrestria per familias et genera et species descripta*. Nielsen and Lydiche, Hauniae [Copenhagen], 319 pp.
- Budde-Lund G (1893) Landisopoder fra Venezuela, insamlede of Dr. F. Meinert. *Entomologiske Meddelelser* 4: 111–129.
- Budde-Lund G (1908) Isopoda von Madagaskar und Ostafrika. Mit Diagnosen verwandter Arten. In: Voeltzkow A (Ed.) *Reise in Ostafrika in den Jahren 1903-1905. Wissenschaftliche Ergebnisse* 2: 265–308, pls 12–18.
- Campos SL, Peña GLE (1973) Los insectos de isla de Pascua (Resultados de una prospección entomológica). *Revista Chilena de Entomología* 7: 217–229.
- Chilton C (1901) The terrestrial Isopoda of New Zealand. *Transactions of the Linnean Society of London, Zoology* 8: 99–152, pls 11–16. doi: 10.1111/j.1096-3642.1901.tb00502.x
- Chown SL, Slabber S, McGeoch MA, Janion C, Leinaas HP (2007) Phenotypic plasticity mediates climate change responses among invasive and indigenous arthropods. *Proceedings of the Royal Society B* 274: 2531–2537. doi: 10.1098/rspb.2007.0772
- Christiansen K, Bellinger P (1992) Collembola. *Insects of Hawaii* 15: 1–445.
- Chu P-S, Chen YR, Schroeder TA (2010) Changes in precipitation extremes in the Hawaiian Islands in a warming climate. *Journal of Climate* 23: 4881–4900. doi: 10.1175/2010JCLI3484.1
- Dana JD (1853) *Crustacea. Part 2. Isopoda*. United States exploring Expedition during the years 1838, 1839, 1840, 1841, 1842 under the Command of Charles Wilkes, U.S.N. 13(2): 696–805, pls 46–53.
- Desender K, Baert L (1997) Conservation of terrestrial arthropods on Easter Island as exemplified by the beetle fauna. *Conservation Biology* 11: 836–838.
- Fabricius JC (1798) *Supplementum Entomologiae Systematicae*. Proft & Storch, Hafniae [= Copenhagen], 296–306.
- Fischer SR (2005) *Island at the end of the world: The turbulent history of Easter Island*. Reaktion Books, London, 304 pp.
- Fordham DA, Brook BW (2010) Why tropical island endemics are acutely susceptible to global change. *Biodiversity and Conservation* 19: 329–342. doi: 10.1007/s10531-008-9529-7

- Fuentes F (1914) Contribucion al estudio de la fauna de la Isla de Pascua. Boletin del Museo Nacional de Chile 7(1): 285–318, 1 map.
- Green AJA (1971) Styloniscidae (Isopoda, Oniscoidea) from Tasmania and New Zealand. Papers and Proceedings of the Royal Society of Tasmania 105: 59–74.
- Howarth FG (1980) The zoogeography of specialized cave animals: a bioclimatic model. Evolution 34: 394–406. doi: 10.2307/2407402
- Howarth FG (1982) Bioclimatic and geological factors governing the evolution and distribution of Hawaiian cave insects. Entomologia Generalis 8: 17–26.
- Howarth FG, Nishida GM, Evenhuis NL (2001) Insects and other terrestrial arthropods. In: Staples GW, Cowie RH (Eds) Hawai'i's invasive species: a guide to invasive plants and animals in the Hawaiian Islands. Mutual Publishing & Bishop Museum Press, Honolulu, 41–62.
- Hunt T, Lipo C (2006) Late colonization of Easter Island. Science 311: 1603–1606. doi: 10.1126/science.1121879
- [IPCC] Intergovernmental Panel on Climate Change (2013) Climate Change 2013: The physical science basis. <http://www.ipcc.ch/report/ar5/wg1/> [accessed 10 February 2015]
- Jackson H (1941) Check-list of the terrestrial and fresh-water Isopoda of Oceania. Smithsonian miscellaneous Collections 99: 1–35.
- Jordana R, Baquero E (2008) *Coecobrya kennethi* sp. n. (Collembola, Entomobryomorpha) and presence of *Arrhopalites caecus* (Tullberg, 1871) from Ana Roiho cave (Maunga Hiva Hiva), Rapa Nui-Easter Island. Euryale 2: 68–75.
- Kuschel G (1963) Composition and relationship of the terrestrial faunas of Easter, Juan Fernandez, Desventuradas, and Galapagos Islands. California Academy of Sciences, Occasional Papers 44: 79–95.
- Latreille P (1804) Histoire naturelle, générale et particulière, des crustacés et des insectes. Cloportides 7: 25–49.
- McCall G (1990) Rapanui and outsiders: The early days. In: Illius B, Barthel TS (Eds) Circumpacifica; Festschrift für Thomas S. Barthel. Lang, Frankfurt am Main, 165–225.
- Miers E (1877) On a collection of Crustacea, Decapoda and Isopoda, chiefly from South America, with descriptions of new genera and species. Proceedings of the Zoological Society of London 1877: 653–679, pls 66–69.
- Mockford EL, Wynne JJ (2013) Genus *Cyptophania* Banks (Psocodea: Lepidopsocidae): Unique features, augmented description of the generotype, and descriptions of three new species. Zootaxa 3702: 437–449. doi: 10.11646/zootaxa.3702.5.3
- Northup DE, Welbourn WC (1997) Life in the twilight zone - lava tube ecology, natural history of El Malpais National Monument. New Mexico Bureau of Mines and Mineral Resources Bulletin 156: 69–82.
- Nunomura N (2007) Terrestrial isopod crustaceans from Hachijo Island, middle Japan. Bulletin of the Toyama Science Museum 30: 17–36.
- Olalquiaga FG (1946) Anotaciones entomológicas: Insectos y otros artrópodos colectados en Isla de Pascua. Agricultura Técnica 7: 231–233.
- Rolett B, Diamond J (2004) Environmental predictors of pre-European deforestation on Pacific Islands. Nature 431: 443–446. doi: 10.1038/nature02801

- Rivera MAJ, Howarth FG, Taiti S, Roderick GK (2002) Evolution in Hawaiian cave-adapted isopods (Oniscidea: Philosciidae): vicariant speciation or adaptive shifts? *Molecular Phylogenetics and Evolution* 25: 1–9. doi: 10.1016/S1055-7903(02)00353-6
- Roux P (1828) *Crustacés de la Méditerranée et de son littoral*. Imprimerie d'Archard, Marseilles, 174 pp., pls 1–45. doi: 10.5962/bhl.title.8729
- Santamaria CA, Mateos M, Taiti S, De Witt TJ, Hurtado LA (2013) A complex evolutionary history in a remote archipelago: phylogeography and morphometrics of the Hawaiian endemic *Ligia* isopods. *PLoS ONE* 8(12): e85199. doi: 10.1371/journal.pone.0085199
- Schmalfuss H (2003) World catalog of terrestrial isopods (Isopoda: Oniscidea). *Stuttgarter Beiträge zur Naturkunde (A)* 654: 1–341.
- Schmidt C (2003) Contribution to the phylogenetic system of the Crinocheta (Crustacea, Isopoda). Part 2. (Oniscoidea to Armadillidiidae). *Mitteilungen aus dem Museum für Naturkunde in Berlin, Zoologische Reihe* 79: 3–179. doi: 10.1002/mmzn.20030790102
- Shepardson B, Shepardson D, Shepardson F, Chui S, Graves M (2008) Re-examining the evidence for late colonization on Easter Island. *Rapa Nui Journal* 22: 97–101.
- Sutton S (1972) *Woodlice*. Ginn & Company Limited, London, 144 pp.
- Taiti S (1999) Terrestrial isopods from Midway Atoll (Crustacea: Oniscidea). *Bishop Museum Occasional Papers* 59: 37–38.
- Taiti S (2014) The terrestrial Isopoda (Crustacea, Oniscidea) of the Maldives. *Tropical Zoology* 27: 9–33. doi: 10.1080/03946975.2014.894397
- Taiti S, Arnedo MA, Lew SE, Roderick GK (2003) Evolution of terrestriality in Hawaiian species of the genus *Ligia* (Crustacea, Oniscidea). *Crustaceana Monographs* 2: 85–102.
- Taiti S, Ferrara F (1991) Terrestrial Isopods (Crustacea) from the Hawaiian Islands. *Bishop Museum Occasional Papers* 31: 202–227.
- Taiti S, Howarth FG (1996) Terrestrial isopods from the Hawaiian Islands (Isopoda: Oniscidea). *Bishop Museum Occasional Papers* 45: 59–71.
- Taiti S, Howarth FG (1997) Terrestrial isopods (Crustacea, Oniscidea) from Hawaiian caves. *Mémoires de Biospéologie* 24: 97–118.
- Tilman D, May RM, Lehman CL, Nowak MA (1994) Habitat destruction and the extinction debt. *Nature* 371: 65–66. doi: 10.1038/371065a0
- Triantis KA, Borges PAV, Ladle RJ, Hortal J, Cardoso P, Gaspar C, Dinis F, Mendonça E, Silveira LMA, Gabriel R, Melo C, Santos AMC, Amorim IR, Ribeiro SP, Serrano ARM, Quartau JA, Whittaker RJ (2010) Extinction debt on oceanic islands. *Ecography* 33: 285–294. doi: 10.1111/j.1600-0587.2010.06203.x
- Vandel A (1952) Les trichoniscides (Crustacés - Isopodes) de l'hémisphère austral. Leur place systématique leur intérêt biogéographique. *Mémoires du Muséum National d'Histoire Naturelle (A)* 6: 1–116.
- Verhoeff KW (1928) Über einige Isopoden der Zoologischen Staatssammlung in München. 38. Isopoden. Aufsatz. *Zoologischer Anzeiger* 76: 25–36, 113–123.
- Vitousek PM, D'Antonio CM, Loope LL, Rejmánek M, Westbrooks R. (1997) Introduced species: A significant component of human-caused global change. *New Zealand Journal of Ecology* 21: 1–16.
- Wynne JJ, Bernard EC, Howarth FG, Sommer S, Soto-Adames FN, Taiti S, Mockford EL, Horrocks M, Pakarati L, Pakarati-Hotus V (2014) Disturbance relicts in a rapidly changing world: the Rapa Nui (Easter Island) factor. *BioScience* 64(8): 711–718. doi: 10.1093/biosci/biu090