

January 2016

Model-aided quantification of dissolved carbon and nitrogen release after windthrow disturbance in an Austrian karst system

A. Hartmann

J. Kobler

M. Kralik

Follow this and additional works at: https://digitalcommons.usf.edu/kip_articles

Recommended Citation

Hartmann, A.; Kobler, J.; and Kralik, M., "Model-aided quantification of dissolved carbon and nitrogen release after windthrow disturbance in an Austrian karst system" (2016). *KIP Articles*. 3542.
https://digitalcommons.usf.edu/kip_articles/3542

This Article is brought to you for free and open access by the KIP Research Publications at Digital Commons @ University of South Florida. It has been accepted for inclusion in KIP Articles by an authorized administrator of Digital Commons @ University of South Florida. For more information, please contact digitalcommons@usf.edu.



Model-aided quantification of dissolved carbon and nitrogen release after windthrow disturbance in an Austrian karst system

A. Hartmann^{1,2}, J. Kobler³, M. Kralik³, T. Dirnböck³, F. Humer³, and M. Weiler¹

¹Faculty of Environment and Natural Resources, Freiburg University, Freiburg im Breisgau, Germany

²Department of Civil Engineering, University of Bristol, Bristol, UK

³Environment Agency Austria, Vienna, Austria

Correspondence to: A. Hartmann (andreas.hartmann@hydrology.uni-freiburg.de)

Received: 8 June 2015 – Published in Biogeosciences Discuss.: 31 July 2015

Revised: 4 December 2015 – Accepted: 13 December 2015 – Published: 15 January 2016

Abstract. Karst systems are important for drinking water supply. Future climate projections indicate increasing temperature and a higher frequency of strong weather events. Both will influence the availability and quality of water provided from karst regions. Forest disturbances such as windthrow can disrupt ecosystem cycles and cause pronounced nutrient losses from the ecosystems. In this study, we consider the time period before and after the wind disturbance period (2007/08) to identify impacts on DIN (dissolved inorganic nitrogen) and DOC (dissolved organic carbon) with a process-based flow and solute transport simulation model. When calibrated and validated before the disturbance, the model disregards the forest disturbance and its consequences on DIN and DOC production and leaching. It can therefore be used as a baseline for the undisturbed system and as a tool for the quantification of additional nutrient production. Our results indicate that the forest disturbance by windthrow results in a significant increase of DIN production lasting ~ 3.7 years and exceeding the pre-disturbance average by $2.7 \text{ kg ha}^{-1} \text{ a}^{-1}$ corresponding to an increase of 53 %. There were no significant changes in DOC concentrations. With simulated transit time distributions we show that the impact on DIN travels through the hydrological system within some months. However, a small fraction of the system outflow ($< 5 \%$) exceeds mean transit times of > 1 year.

1 Introduction

Karst systems contribute around 50 % to Austria's drinking water supply (COST, 1995). Karst develops due to the dissolvability of carbonate rock (Ford and Williams, 2007) and it results in strong heterogeneity of subsurface flow and storage characteristics (Bakalowicz, 2005). The resulting complex hydrological behaviour requires adapted field investigation techniques (Goldscheider and Drew, 2007). Future climate trajectories indicate increasing temperature (Christensen et al., 2007) and a higher frequency of hydrological extremes (Dai, 2012; Hirabayashi et al., 2013). Both will influence the availability and quality of water provided from karst regions because temperature triggers numerous biogeochemical processes and fast throughflow water has a disproportional effect upon water quality. Furthermore, forest disturbances (windthrows, insect infestations, droughts) pose a threat to water quality through the mobilization of potential pollutants, and these disturbances are likely to increase in the future (Johnson et al., 2010; Seidl et al., 2014).

One way to quantify the impact of changes in climatic boundary conditions on the hydrological cycle is through use of simulation models. Special model structures have to be applied for karst regions to account for their particular hydrological behaviour (Hartmann et al., 2014a). A range of models of varying complexity are available from the literature that deal with the karstic heterogeneity, such as groundwater flow in the rock fracture matrix and dissolution conduits (Jourde et al., 2015; Kordilla et al., 2012), varying recharge areas (Hartmann et al., 2013a; Le Moine et al., 2008) or pre-

erential recharge by cracks in the soil or fractured rock outcrops (Rimmer and Salingar, 2006; Tritz et al., 2011).

Nitrate and dissolved organic carbon (DOC) have both been considered in drinking water directives and water preparation processes (Gough et al., 2014; Mikkelsen et al., 2013; Tissier et al., 2013; Weishaar et al., 2003). Though nitrate pollution of drinking water is usually attributed to fertilization of crops and grassland, an excess input of atmospheric nitrogen (N) from industry, traffic and agriculture into forests has caused reasonable nitrate losses from forest areas (Butterbach-Bahl et al., 2011; Erisman and Vries, 2000; Gundersen et al., 2006; Kiese et al., 2011). The Northern Limestone Alps area is exposed to particularly high nitrogen deposition (Rogora et al., 2006) and nitrate leaching occurs at increased rates (Jost et al., 2010). In addition to this, forest disturbances such as windthrow and insect outbreaks disrupt the N cycle and cause pronounced nitrate losses from the soils, at least in N-saturated systems that received elevated N deposition due to elevated NO_x in the atmosphere (Bernal et al., 2012; Griffin et al., 2011; Huber, 2005). In contrast to N deposition, atmospheric deposition of DOC is low (Lindroos et al., 2008) and thus has not been identified as major driver of DOC leaching from subsoil (Fröberg et al., 2007; Kaiser and Kalbitz, 2012; Verstraeten et al., 2014). Moreover, studies show contrasting results but point to increased DOC (TOC) leaching from soil and catchments after forest disturbances (Huber et al., 2004; Löfgren et al., 2014; Meyer et al., 1983; Mikkelsen et al., 2013; Wu et al., 2014).

While many studies identify N and DOC as source of contamination in karst systems (Einsiedl et al., 2005; Jost et al., 2010; Katz et al., 2001, 2004; Tissier et al., 2013) or provide static vulnerability maps (Andreo et al., 2008; Doerfliger et al., 1999), only very few studies use models to quantify the temporal behaviour of a contamination through the systems (Butscher and Huggenberger, 2008). Some studies use N and DOC to better understand karst processes (Charlier et al., 2012; Mahler and Garner, 2009; Pinault et al., 2001) or for advanced karst model calibration (Hartmann et al., 2013b, 2014b), but to our knowledge there are no applications of such approaches to quantify the drainage processes of N and DOC, and particularly so after strong impacts on ecosystems (e.g. windthrow) that release reasonable amount of nitrate from the forest soils.

In this study, we consider the time period before and after storm Kyrill (early 2007) and several other storm events (2008) that hit central Europe. The storms, from now on referred to as the wind disturbance period, caused strong damage to the forests in our study area, a dolomite karst system. We apply a new type of semi-distributed model that considers the spatial heterogeneity of the karst system by distribution functions. We aimed at comparing the hydrological and hydrochemical behaviour (DOC, DIN) of the system before and during the wind disturbing period. In particular, we wanted to understand if and how DOC and DIN input to the hydrological system changed by the impact of the storms. Furthermore,

we used virtual tracer experiments to create transit time distributions that expressed how the impact of the storms propagated through the variable dynamic flow paths of the karst system. This allowed us to assess the vulnerability of the karst catchment to such impacts.

2 Study site

The study site, LTER Zöbelboden, is located in the northern part of the national park “Kalkalpen” (Fig. 1). Its altitude ranges from 550 to 956 m a.s.l. and its area is $\sim 5.7 \text{ km}^2$. Mean monthly temperature varies from -1°C in January to 15.5°C in August. The average temperature is 7.2°C (at 900 m a.s.l.). Annual precipitation ranges from 1500 to 1800 mm and snow accumulates commonly between October and May with an average duration of about 4 months. The mean N deposition in bulk precipitation between 1993 and 2006 was $18.7 \text{ kg N ha}^{-1} \text{ yr}^{-1}$, out of which 15.3 kg N (82 %) was inorganic (approximately half as NO_3^- -N and half as NH_4^+ -N; Jost et al., 2010). Due to the dominance of dolomite, the catchment is not as heavily karstified as limestone karst systems, but shows typical karst features such as conduits and sink holes (Jost et al., 2010). The site can be split into steep slopes (30 – 70° , 550 – 850 m a.s.l.) and a plateau (850 – 950 m a.s.l.), with the plateau covering $\sim 0.6 \text{ km}^2$. Chromic Cambisols and Hydromorphic Stagnosols with an average thickness of 50 cm and Lithic and Rendzic Leptosols with an average thickness of 12 cm can be found at the plateau and the slopes, respectively (WRB, 2006). Both the plateau and the slopes are mainly covered by forest. Norway spruce (*Picea abies* (L.) Karst.) interspersed with beech (*Fagus sylvatica* L.) was planted after a clear cut around the year 1910. The vegetation at the slopes is dominated by semi-natural mixed mountain forest with beech (*Fagus sylvatica*) as the dominant species, Norway spruce (*P. abies*), maple (*Acer pseudoplatanus*), and ash (*Fraxinus excelsior*). At the slopes no forest management has been conducted since the establishment of the national park.

2.1 Available data

A 10-year record of input and output observations was available. Starting from the hydrological year 2002/03, it envelops well the stormy period that began in January 2007. It included daily rainfall measurements and stream discharge measurements from stream sections 1 and 2 (Fig. 1). We obtained the discharge of the entire system with a simple topography-based up-scaling procedure that is described in more detail in Hartmann et al. (2012a). Irregular (weekly to monthly) observations of DOC, DIN and SO_4^{2-} concentrations are available for precipitation and at weir 1. DOC, NO_3^- , SO_4^{2-} and NH_4^+ (since January 2010) samples were filtered ($0.4 \mu\text{m}$) before the analysis. NH_4^+ concentrations were measured by spectrophotometry (Milton Roy Spec-

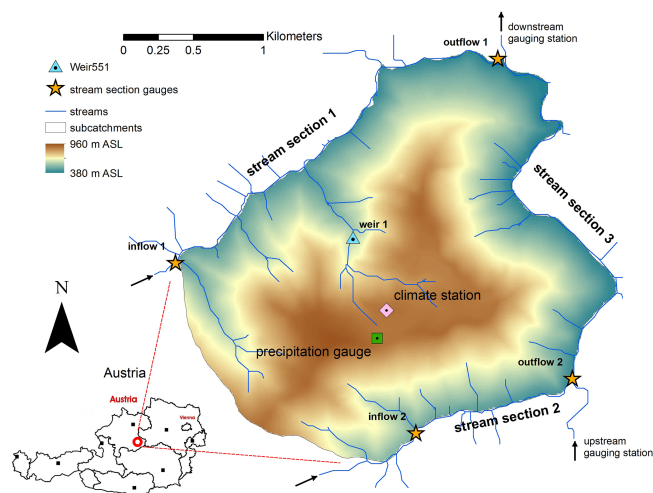


Figure 1. Study site and location of measurement devices (Hartmann et al., 2012a; modified).

tronic). Weekly DOC, SO_4^{2-} and NO_3^- samples were pooled to provide volume weighted biweekly (until March 2009) and monthly (thereafter) samples. DOC samples were acidified with 0.5 mL HCl 25 % and were measured with a Maihak TOCOR 100 and a CPN TOC/DOC analyser (Shimadzu Corp., Japan). NO_3^- and SO_4^{2-} concentrations were determined by ion chromatography with conductivity detection. DIN input was then calculated as the sum of NO_3^- -N and NH_4^+ -N. Since NH_4^+ is either transformed into NO_3^- or absorbed in the soil, NH_4^+ concentrations in runoff are very small or not detectable. Therefore we calculated DIN outputs as NO_3^- -N. Additionally, irregular observations of snow water equivalent at the plateau allowed for independent setup of the snow routines.

2.2 Recent disturbances

Kyrill in the year 2007 and some similarly strong storms subsequent to 2008 caused some major windthrows as well as single tree damages. A windthrow disturbance of ~ 5 ha occurred upstream of weir 1. Though no direct measurements exist as to the total extent of the windthrow area we estimate that 5–10 % of the study site has been subject to windthrow (Kobler et al., 2015). We did not observe a significant change in intra- and interannual variability in DOC concentrations and discharge before and during the wind disturbance period (Fig. 2a, e). Runoff concentrations of DIN showed clear responses to the disturbances. With the first windthrow event it started to increase until 2008/09 and slowly decreased again in 2010/11 (Fig. 2c). Comparison of DOC concentrations with discharge before and during the wind disturbance period revealed a similar pattern. As shown by other studies on DOC mobilization (e.g., Raymond and Saiers, 2010), a positive correlation between concentrations and discharge (on log10 scale) occurred for DOC with concentrations up to

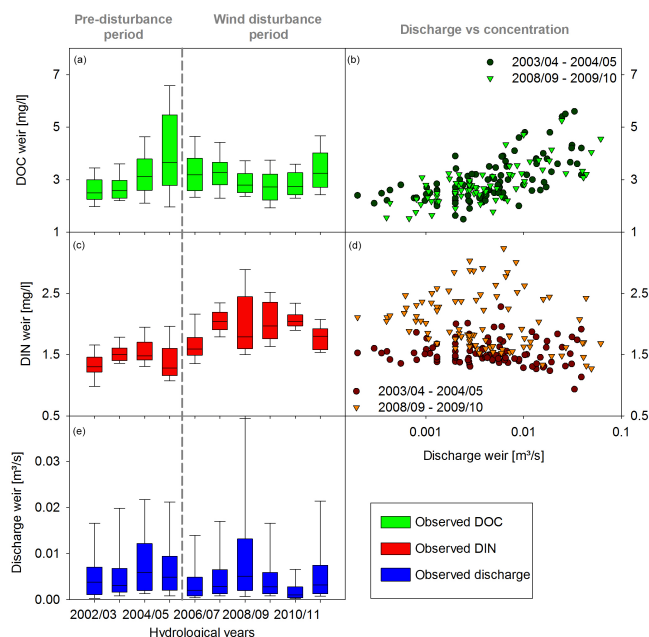


Figure 2. Intra-annual and interannual variations in (a) DOC concentrations, (c) DIN concentrations and (e) discharge, and relation between discharge and (b) DOC and (d) DIN before and during the wind disturbance period.

6 mg L^{-1} during high discharge (similar to Hagedorn et al., 2000). However, there was no obvious difference between the pre-disturbance period (Fig. 2b).

3 Methods

3.1 The model

3.1.1 Model hydrodynamics

The semi-distributed simulation model considers the variability in karst system properties by statistical distribution functions spread over $Z = 15$ model compartments (Fig. 3). That way it simulates a range of variably dynamic pathways through the karst system. The detailed equations of the model hydrodynamics are similar to its previous applications (Hartmann et al., 2013a, c, 2014b). They are described in the Appendix. Since in our case the model is used to simulate the discharge of the entire system and a weir within the system, some small modifications had to be performed. Preceding studies showed that weir 1 (Fig. 1) receives its discharge partially from the epikarst and partially from the groundwater, reaching it partially as concentrated and partially as diffuse flow (Hartmann et al., 2012a). Consequently we derive its

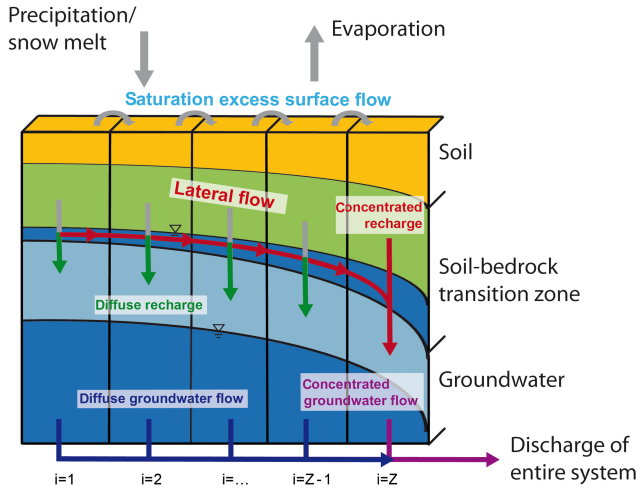


Figure 3. Diagram of model structure; it is assumed that discharge and hydrochemistry at the two weirs is composed by different mixtures of diffuse recharge (green), concentrated recharge (red), diffuse groundwater flow (blue) and concentrated groundwater flow (purple).

discharge Q_{weir} [L s^{-1}] by

$$Q_{\text{weir}}(t) = f_{\text{Epi}} \cdot \left[f_{\text{Epi, conc}} \cdot \sum_i^Z R_{\text{conc},i}(t) + (1 - f_{\text{Epi, conc}}) \cdot \sum_i^Z R_{\text{diff},i}(t) \right] + (1 - f_{\text{Epi}}) \cdot \left[f_{\text{GW, conc}} \cdot Q_{\text{GW},Z}(t) + (1 - f_{\text{GW, conc}}) \cdot \sum_i^{Z-1} Q_{\text{GW},i}(t) \right], \quad (1)$$

where f_{Epi} is the fraction from the epikarst and $(1 - f_{\text{Epi}})$ the fraction from the groundwater. $f_{\text{Epi, conc}}$ and $f_{\text{GW, conc}}$ represent the concentrated flow fractions of the epikarst and groundwater contributions, respectively. Table 1 lists all model parameters, with a short description for each.

3.1.2 Model solute transport

To model the non-conservative transport of DOC and, DIN and SO_4^{2-} , we equipped the model with solute transport routines. SO_4^{2-} was included as an additional calibration variable because it proved to be important to reduce model equifinality (Beven, 2006) by adding additional information about groundwater dynamics (Hartmann et al., 2013a, b). The inclusion of these three solutes allowed for a more reliable estimation of model parameters (Hartmann et al., 2012b, 2013a) and, later on, the evaluation of possible changes in the dynamic of solute concentrations during the stormy period. For most of the model compartments solute transport simulations simply followed the assumption of complete mixing. However, to represent net production and leaching of DOC and DIN in the soil, as well as dissolution of SO_4^{2-}

in the rock matrix, additional processes were included in the model structure. Similar to preceding studies (Hartmann et al., 2013a, 2014b) SO_4^{2-} dissolution $G_{\text{SO}_4,i}$ [mg L^{-1}] for compartment i is calculated by

$$G_{\text{SO}_4,i} = G_{\text{max,SO}_4} \cdot \left(\frac{Z-i+1}{Z} \right)^{a_{\text{Geo}}}, \quad (2)$$

where a_{Geo} [–] is another variability parameter and $G_{\text{max,SO}_4}$ [mg L^{-1}] is the equilibrium concentration of SO_4^{2-} in the matrix. DOC is mostly mobilized at the forest floor (Borken et al., 2011). Stored in the soil or diffusively and slowly passing downwards, large parts of the DOC are absorbed or consumed by microorganisms, but when lateral flow and concentrated infiltration increase, net leaching of DOC increases as well. For that reason our DOC transport routine only provides water to the epikarst when it is saturated (Eq. A4) with increasing DOC net production toward the more dynamic model compartments (Fig. 3). Its DOC concentration $P_{\text{DOC},i}$ [mg L^{-1}] for each model compartment is found by

$$P_{\text{DOC},i} = P_{\text{DOC}} \cdot \left(\frac{Z-i+1}{Z} \right)^{-\frac{1}{a_{\text{DOC}}}}, \quad (3)$$

where a_{DOC} [–] is the DOC variability constant and P_{DOC} [mg L^{-1}] is the DOC net production at soil compartment 1. Similar to other studies that assessed N input to a karst system (Pinault et al., 2001), we used a trigonometric series to assess the time variant net production of DIN, $P_{\text{DIN},i}$ [mg L^{-1}], to the soil:

$$P_{\text{DIN},i} = P_{\text{DIN}} + A_{\text{DIN}} \cdot \sin \left(\frac{365.25}{2\pi} \cdot (J_D + S_{\text{PH,DIN}}) \right). \quad (4)$$

Here, P_{DIN} is the mean amount of dissolved inorganic N in the soil solution, while A_N [mg L^{-1}] and $S_{\text{PH,DIN}}$ [d] are the amplitude of the seasonal signal and the phase shift of seasonal DIN uptake (immobilization by plants and soil organisms) and release (net DIN in the soil water) cycle, respectively. J_D is the Julian day of each calendar year. Due to its seasonal variation, $P_{\text{DIN},i}$ can also be negative, meaning that uptake of DIN takes place.

3.2 Model calibration and evaluation

With 14 model parameter that controlled the hydrodynamics and 7 parameters that allow for the non-conservative solute transport, the calibration of the model was a high-dimensional problem. For that reason we have chosen the Shuffled Complex Evolution Metropolis (SCEM) algorithm (Vrugt et al., 2003), which proved to be capable of exploring high-dimensional optimization problems (Fenicia et al., 2014; Feyen et al., 2007; Vrugt et al., 2006). As performance measure we used the Kling–Gupta efficiency (KGE; Gupta et al., 2009). For calibration, KGE was weighted equally among all solutes, one-third for the discharge of the entire system

Table 1. Model parameters, description, ranges and calibrated values with KGE performances for the calibration and validation samples.

Parameter	Description	Unit	Ranges		Optimized values	
			Lower	Upper	Sample 1	Sample 2
$V_{\text{mean,S}}$	mean soil storage capacity	mm	0	1500	450.18	599.13
$f_{\text{var,S}}$	fraction of the spoil that has a variable depth	–	0	1	0.06	0.02
$V_{\text{mean,E}}$	mean epikarst storage capacity	mm	0	1500	1495.49	1233.98
a_{SE}	soil/epikarst depth variability constant	–	0	2	1.69	1.91
$K_{\text{mean,E}}$	epikarst mean storage constant	d	1	50	2.65	8.27
a_{fsep}	recharge separation variability constant	–	0	2	0.88	1.44
K_{C}	conduit storage constant	d	1	10	1.37	1.03
a_{GW}	groundwater variability constant	–	0	2	2.00	1.88
f_{EW}	fraction of weir discharge originating from the epikarst	–	0	1	0.56	0.72
$f_{\text{WE,conc}}$	fraction of weir discharge originating from the epikarst as concentrated flow	–	0	1	0.57	0.47
$f_{\text{GW,conc}}$	fraction of weir discharge originating from the groundwater as concentrated flow	–	0	1	0.01	0.06
P_{DOC}	DOC production parameter	mg L^{-1}	0	15	1.79	1.57
a_{DOC}	DOC variability constant	–	0	2	0.92	1.05
P_{DIN}	DIN production parameter	mg L^{-1}	–5	10	–1.35	0.11
$S_{\text{PH,DIN}}$	phase of annual DIN production	d	0	365	0	2
A_{DIN}	amplitude of annual DIN production	mg L^{-1}	0	10	3.36	1.84
$G_{\text{max,SO}_4}$	equilibrium concentration of SO_4 in matrix	mg L^{-1}	0	50	2.74	3.07
a_{Geo}	equilibrium concentration variability constant	–	0	2	0.11	0.04
$\text{KGE}_{\text{weighted}}$	weighted multi-objective model performance	–	0	1	0.56/0.49*	0.52/0.53*
$\text{KGE}_{\text{Q,tot}}$	model performance for discharge of entire system	–	0	1	0.41/0.33*	0.35/0.42*
$\text{KGE}_{\text{Q,W}}$	model performance for discharge of weir	–	0	1	0.67/0.62*	0.61/0.66*
KGE_{DOC}	model performance for DOC concentrations	–	0	1	0.38/0.35*	0.43/0.32*
KGE_{DIN}	model performance for NO_3 concentrations	–	0	1	0.48/0.40*	0.48/0.45*
KGE_{SO_4}	model performance for SO_4 concentrations	–	0	1	0.74/0.62*	0.64/0.65*

* Calibration/validation with other sample.

and two-thirds for the discharge of weir 1, whose observation precision was regarded to be more reliable than the up-scaled discharge. KGE is defined as

$$\text{KGE} = 1 - \sqrt{(r - 1)^2 + (\alpha - 1)^2 + (\beta - 1)^2}, \quad (5)$$

$$\text{with } \alpha = \frac{\sigma_S}{\sigma_O} \quad \text{and} \quad \beta = \frac{\mu_S}{\mu_O}, \quad (6)$$

where r is the linear correlation coefficient between simulations and observations, and μ_S/μ_O and σ_S/σ_O are the means and standard deviations of simulations and observations, respectively. α expresses the variability and β the bias.

To check for the stability of the calibrated parameters, we perform a split-sample test (Klemeš, 1986). Since the pre-disturbance time series was too short to be split into two equally long periods, we perform a both-sided split-sample test by bootstrapping two independent 4-year time series of observations (first sample: discrete sampling of 50 % of the values of each observed time series; second sample: remaining 50 % of the observations). We calibrate our model with the first sample and evaluate it with the second sample, and

vice versa. A parameter set is regarded stable when the calibration with both samples yields similar parameter sets and their KGE concerning discharge and the solutes does not reduce significantly when applying them to the other sample.

3.3 Change in hydrochemical behaviour with the stormy period

After the model evaluation, we use the different components of the KGE in Eqs. (5) and (6) to explore the impacts of the storm disturbance period on the hydrochemical components. By assuming that the model is able to predict to hydrochemical behaviour that prevailed without the impact of the storms adapting the hydrochemical parameters of the model in Eqs. (3)–(4) and analysing the difference between the adapted hydrochemical simulations and the non-adapted simulations, we are able to quantify the change in solute mass balance due to the storm impact. We define the time span for our adaption as the time when the different components of KGE exceed the range of their pre-disturbance variability. During this time period we compensate for the apparent de-

viations by adapting the hydrochemical parameters. This is done twice – once by manual adaption and another time using an automatic calibration scheme. Their new values will indicate changes in the seasonality, production or interannual variations.

3.4 Transit time distributions

The signal of the storm impact will travel at various velocities and via pathways through the karst system. While fast flow paths and small storages will transport the signal rapidly to the system outlet, slow pathways and large storages will delay and dilute the signal. Transit time distributions indicate how fast surface impacts travel through the hydrological system. We derive transit time distributions from the model by performing a virtual tracer experiment with continuous injection over the entire catchment at the beginning of the impact of the stormy period. When a model compartment reaches 50 % of the tracer concentration is considered median transit time. The thus-derived transit times will elaborate how the hydrological system propagates the signal through the system including all slow and fast pathways as defined by Eqs. (12) and (18). As for DIN and DOC we assume complete and instantaneous mixing with each model storage (soil, epikarst, and groundwater) at each compartment; the time that we refer to as “mean transit time” of a model compartment is the time the virtual tracer needs to pass through the particular model storage. In combination with the fluxes that are provided from each of the model compartments, it is possible to quantify the fractional contribution of fast and slow flow paths, respectively. We will apply the virtual tracer from the previously assessed beginning of the impact until the end of the time series to assess the transit time distribution. In addition, we apply a second virtual tracer that also lasts only for the disturbance period (as estimated in Sect. 3.3) to evaluate the filter and retardation potential of the karst system.

4 Results

4.1 Model performance

Table 1 shows the calibrated parameters for the two samples. They indicate a thick soil and a relatively thin epikarst. The dynamics expressed by the storage constants indicate days and weeks for the conduits (model compartment $i = Z$) and the epikarst, respectively. The distribution coefficient of the groundwater is larger than the soil/epikarst storage constant. For DOC and DIN there are a natural production rates of 1.6–1.8 and -1.35 – 0.1 mg L^{-1} , respectively. The DOC distribution coefficient is between 0.9 and 1.1. The phase shift and amplitude for DIN showed that there is a seasonal variation in DIN net production, with its maximum release at April each year for both of the samples. SO_4^{2-} is dominated by the concentration in the precipitation input with some leaching

in the soil and sulfides in the dolomite. Its variability constant is quite low (<0.1). Weighted KGEs, as well as their values for the individual simulation variables, are relatively stable. Overall, calibration on both samples provided similar parameter values. Due to its higher stability concerning the evaluation period, we chose the second sample for further analysis.

The discharge simulations follow adequately the variations in the observations (Fig. 4), although some small events are not reproduced by the model and although the simulations of the weir's discharge tend to underestimate peak flows. No obvious differences can be seen between the pre-disturbance and wind disturbance period. The hydrochemical simulations tend to follow the observations as well (Fig. 5). However, there is sometimes some underestimation of the DOC peaks for the pre-disturbance period. The DIN simulations appear to be more precise during the pre-disturbance period, but there is a systematic underestimation when the disturbance takes place.

4.2 Model performance during the wind disturbance period

There is a deviation between pre-disturbance and disturbance period simulated and observed variability and bias for DIN (Fig. 6). A similar tendency can be found for DOC. However, only for DIN are the deviations different to the variations already found during the pre-disturbance period (which is also the calibration/validation period). The variations in DOC appear to be systematic, too, but they fall within its ranges of variability during the pre-disturbance period.

4.3 Adaption of N parameters for the wind disturbance period

The very first signs of the impact were found on 1 May 2007, and they lasted to the end of the hydrological year 2010/11. In a first trial (Table 2), the model parameters for the DIN production were adapted manually to compensate for the changes in observed DIN concentrations with a focus on reducing the difference indicated by the bias, β , and variability, α , components of KGE_{DIN} . In a second trial, we use an automatic calibration scheme to achieve the optimum KGE_{DIN} . As indicated by the highest KGE (Table 2), the automatic calibration provided the highest KGE_{DIN} , but this is achieved by improving variability α and correlation r . Almost no improvement is reached for the bias β . Even though resulting in a slightly lower improvement of KGE_{DIN} the manual calibration results in a much more acceptable reduction in the bias (Fig. 6). Its parameter values showed a production rate, P_{DIN} , of DIN almost 2 mg L^{-1} larger than the pre-disturbance value; an amplitude, A_{DIN} , around 1 mg L^{-1} smaller; and a phase shift, $S_{\text{PH,DIN}}$, towards a week earlier in the year, resulting in a more acceptable simulation of DIN dynamics during the disturbance period (Fig. 7).

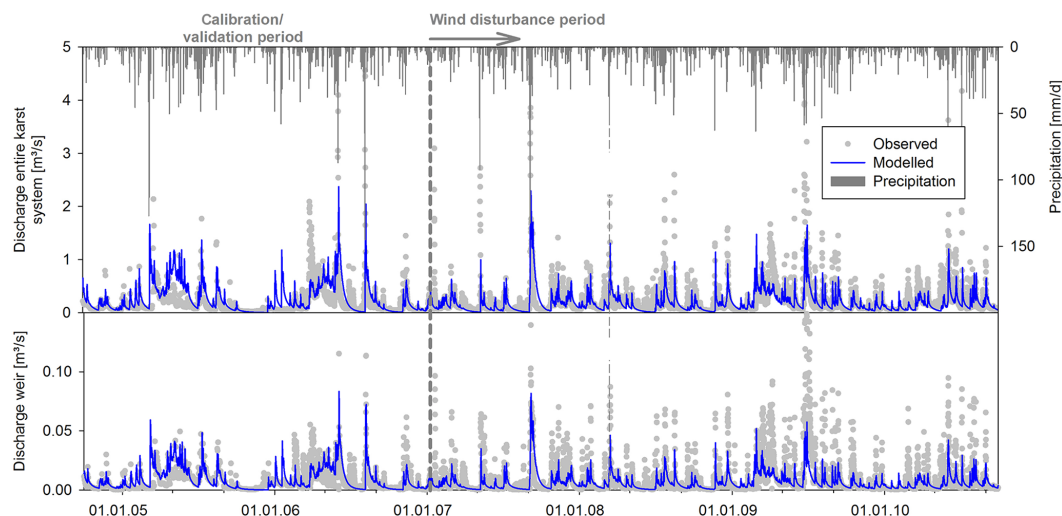


Figure 4. Observed vs. simulated discharges for the entire karst system and weir 1.

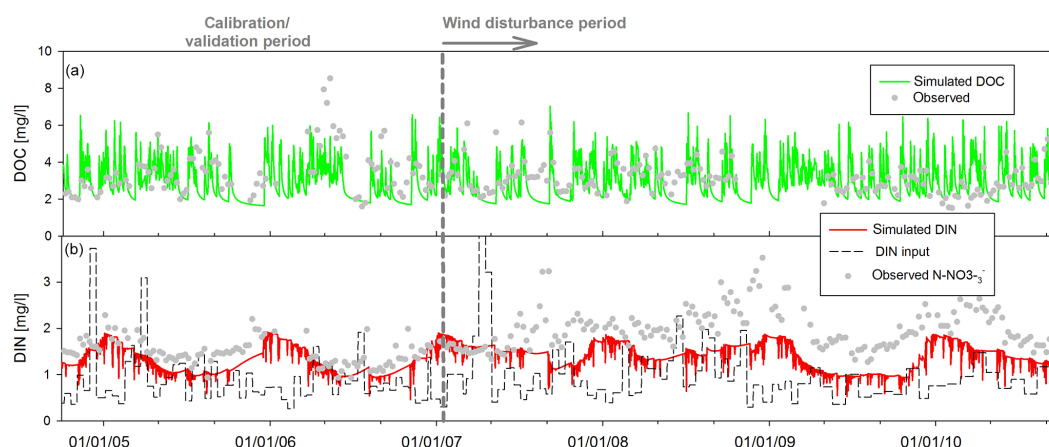


Figure 5. Observed vs. simulated (a) DOC and (b) DIN at weir 1.

4.4 Transit time distributions

The transit time distributions show that the soil and epikarst system reacts quite rapidly to the virtual injection. Fifty percent of the injection concentration is reached within ~ 60 days (Fig. 8a), while most of groundwater system requires ~ 100 days to reach 50 % of the injection concentration, with a few flow paths requiring up to 300 days (Fig. 8c). A similar behaviour is found when the impact ends (Fig. 8b, d). This behaviour also shows that some of the slowest flow paths just reach the input concentration before they start to decline again.

5 Discussion

5.1 Reliability of calibrated parameters and model simulations

Most of the calibrated model parameters are in ranges that are in accordance with other modelling studies or field evidence. General differences between the calibrated parameter values of the both-sided split-sample test may mostly be due to the comparatively low resolution of the hydrochemical variables (SO_4 , DOC and DIN), which actually increased as a result of the bootstrapping procedure. However, the good multi-objective simulation performance of the model, as well as its evaluation by the split-sample test, indicate an overall acceptable performance of the model. At almost 3–8 days the epikarst storage constant is in accordance with field studies on the epikarst storage behaviour that found retention times of some days to a few weeks (Aquilina et al., 2006;

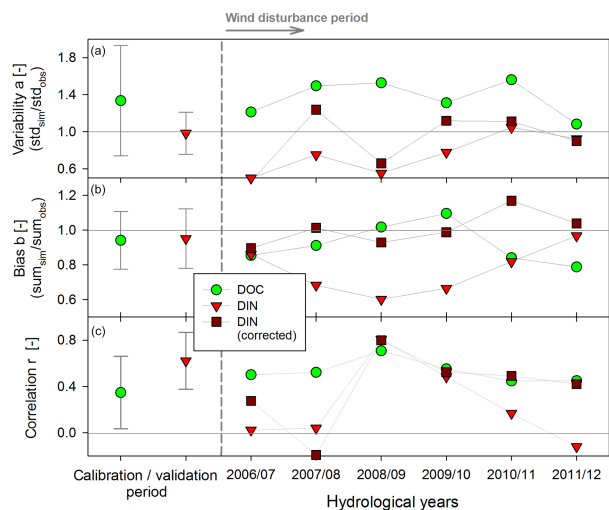


Figure 6. Individual components of the KGE: (a) ratio of simulated and observed variabilities, (b) ratio of simulated and observed average values, and (c) their correlation for the wind disturbance period; for comparison the KGE components and their interannual variability are also shown for the pre-storm period and after the correction of the DIN production model parameters during the wind period.

Perrin et al., 2003). The soil and the epikarst storage capacity are quite large. These high values may be explained by structural errors of the model that result in unrealistic calibrated parameter values, in particular possible parameter interactions between their storage capacities and storage coefficients. Since the soil and the vegetation controls the fraction of rain that is lost to evapotranspiration, this high calibrated value might be due to tree roots ranging through the soil into the epikarst (Heilman et al., 2012) or rock debris (Hartmann et al., 2012a).

Similar to the epikarst storage constant, the conduit storage constant, K_C , is, with its value of 1.1 days, in the range of previous modelling studies (Fleury et al., 2007; Hartmann et al., 2013a). The high values of the epikarst variability constant and the groundwater constant indicate a low development of preferential flow paths in the rock, which is typical for dolomite aquifers (Ford and Williams, 2007). A low degree of karstification was already known for our study site (Jost et al., 2010) and the calibrated recharge areas fall well within the ranges found in previous modelling studies (Hartmann et al., 2012a, 2013c).

The hydrochemical parameters mostly show realistic values. A DOC production parameter, P_{DOC} , of ~ 1.6 – 1.8 mg L^{-1} resulted in realistic simulated concentrations at the weir. For DIN production the two calibration samples result in values of -1.4 and 0.1 mg L^{-1} , going along with amplitudes of 3.4 and 1.8, respectively. Hence, there appears to be some correlation between the production and amplitude parameters, P_{DIN} and A_{DIN} . Negative values indicate that, during some periods of the year, all DIN is consumed

Table 2. Calibrated pre-storm parameters for DIN dynamics and two scenarios for adapting the model at the stormy period.

Parameter	Unit	Calibration type		
		pre-storm	manual	automatic
P_{DIN}	mg L^{-1}	0.11	2.10	0.00
$S_{PH,DIN}$	d	2.00	9.00	23
A_{DIN}	mg L^{-1}	1.80	0.70	2.63
KGE_{DIN}^*	–	0.29	0.41	0.46
variability α_{DIN}^*	–	0.75	1.04	1.05
bias β_{DIN}^*	–	0.70	1.01	0.83
correlation γ_{DIN}^*	–	0.40	0.41	0.49

* For 2006/07–2011/12.

by plants or soil organisms and that the production period is shorter but more pronounced due to its larger value of amplitude. However, we expect these differences to be minor since the phase shift $S_{PH,DIN}$ of both calibration samples is almost the same, as well as their annual maximum ($P_{DIN} + A_{DIN}$) of 2.01 and 1.95 mg L^{-1} . This behaviour indicates a maximum of DIN production and leaching at the time of the year when snowmelt reaches its maximum (March to April) and when DIN uptake by plants is still low (Jost et al., 2010). The dissolution equilibrium concentrations of 2.7 – 3.1 mg L^{-1} for SO_4^{2-} indicate the abundance of the precipitation input, oxidation of sulfides (e.g. pyrite) in the dolomite and traces of evaporates in the small Plattenkalk occurrences (Kralik et al., 2006).

5.2 Impact of storms

The deviation between simulated and observed time series (Fig. 5) already indicates that DIN is the only solute that shows a clear impact of the storms. This is further corroborated by considering the individual components of KGE in Fig. 6. It is well known that nitrate leaching to the groundwater increases sharply after tree damage (dieback) in forests where N is not strongly limited (Bernal et al., 2012; Griffin et al., 2011; Huber, 2005). Such disturbances disrupt the N cycle. The loss of tree N uptake favours nitrification of surplus NH_4^+ by microorganisms. Moreover, above- (i.e. foliage) and belowground (i.e. fine roots) litter from dead trees enhances the mineralization of organic matter, ammonification and nitrification. Both processes are accelerated by increased soil moisture and soil temperature due to the loss of the forest canopy. Subsequently, leaching of N increases with increased seepage fluxes due to decreased interception and water uptake by trees. Since the simple DIN routine of the model cannot take into account such changes, the underestimated DIN concentrations and their amplitude show the effect of forest disturbance on the leaching of DIN from the studied catchment. There is also an apparently systematic deviation of the DOC variability α . But its variations during the pre-storm pe-

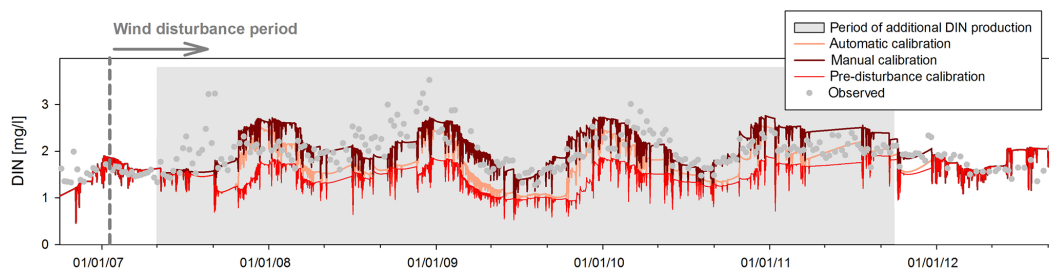


Figure 7. Observed and simulated DIN dynamics using the pre-storm parameters (red line), the scenario 1 parameters derived from the deviations assessed by the KGE components (orange line), and the scenario 2 parameters derived by systematic variation (dark-red line).

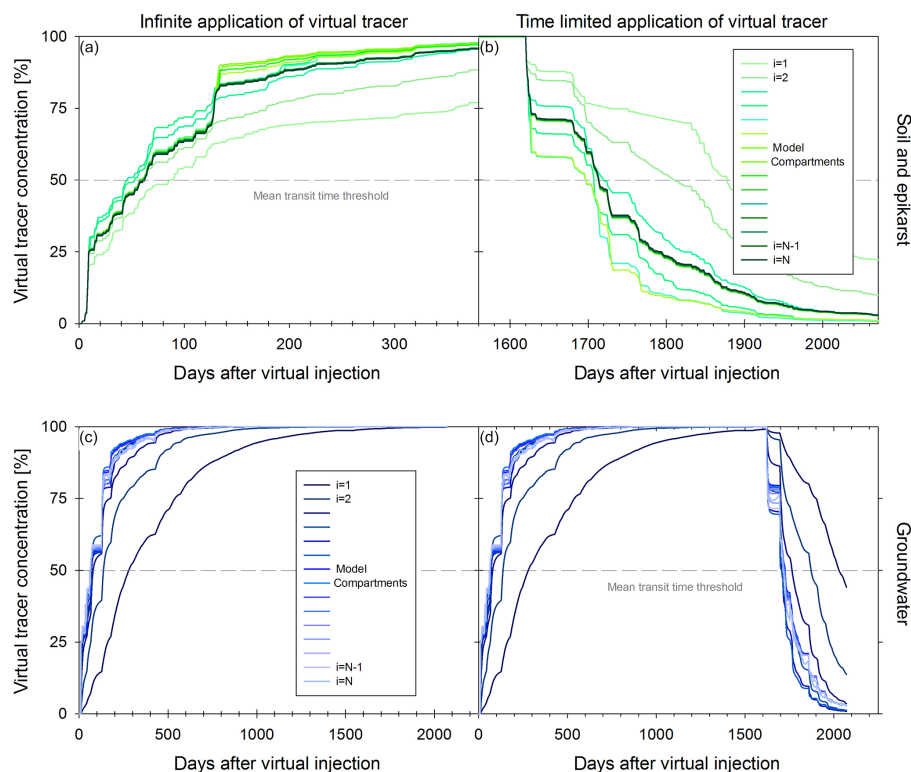


Figure 8. Mean transit times for (a) the soil and epikarst and (c) the groundwater storage derived by an infinite virtual tracer injection starting with the beginning of the wind disturbance period, and (b) the reaction of the soil and epikarst and (d) the groundwater storage as the impact ends.

riod are similarly large, thus pointing to a negligible effect of forest disturbance on DOC leaching. Numerous studies have identified the forest floor as a DOC source (Borken et al., 2011; Michalzik et al., 2001). Windthrow generally causes a (short-term) pulse of above- and belowground litter (Hartmann et al., 2011). Thereby, mineralization of the surplus litter input concurrent with improved soil climatic conditions likely increased the leaching of DOC from the forest floor (Fröberg et al., 2007; Kalbitz et al., 2007). Concurrent, increased soil water, surface and shallow subsurface flow may favour increased soil DOC leaching to downslope surface waters (Monteith et al., 2006; Neff and Asner, 2001; Sanderman et al., 2009). In mountainous catchments the latter flow

paths are likely due to the steepness of the catchment slopes (Boyer et al., 1997; Sakamoto et al., 1999; Terajima and Moriizumi, 2013). The missing signal of forest disturbance on DOC concentrations at weir 1 even shortly after the disturbance may be due to the minor extension of the disturbed area, the minor increase of surface and shallow subsurface flow due to the relative low slope of the disturbed area, the buffering of increased topsoil DOC leaching due to absorption of DOC within the subsoil (Borken et al., 2011; Huber et al., 2004), missing DOC-rich riparian source areas (i.e. wetlands, floodplains) and the reduction in pre-disturbance organic matter input to soil (i.e. litter, root exudates; Höglberg and Höglberg, 2002). Theoretically, hydrological pro-

cesses such as a decrease in transpiration or an increase of groundwater recharge may also occur. But these superficial changes are probably minor considering the typically high karstic infiltration capacities that remove surface water quite rapidly (Hartmann et al., 2014b, 2015). Therefore, hydrological impacts of windthrow on karst systems (for instance on transpiration) may not be as pronounced as in non-karstic domains because a large fraction of the infiltration during high flow periods will not be available for transpiration anyway. Consequently, a disturbance-caused impact on DOC availability could also be hidden because increased infiltration and DOC leaching during strong rainfall events may just not be detectable considering the weekly to monthly sampling of DOC. For a better understanding of disturbance-induced changes in DOC, more sampling in high temporal resolution of DOC concentrations at the weir (Fig. 1) should be undertaken to elucidate the effect of forest disturbance on DOC dynamics and to improve the simulation of DOC production and transport within the studied ecosystem.

5.2.1 N leaching from the soil

Adapting the DIN solute transport parameters through use of an automatic calibration scheme resulted in an increased KGE_{DIN} (Fig. 7). However, it did not resolve the bias of simulated and observed DIN concentrations during the wind disturbance period since the overall improvement of KGE_{DIN} was reached by an improvement of r and α (Table 2). Adjusting the DIN parameters manually resulted in a more acceptable decrease in the bias β that also went along with an increase of the overall KGE_{DIN} . An increase of the DIN production rate of $\sim 2 \text{ mg L}^{-1}$ indicates a massive mobilization of DIN and a reduction in its seasonal amplitude by $\sim 1.1 \text{ mg L}^{-1}$. Even though there may be some correlation between mean annual production and amplitude (see previous section), the annual maximum of 2.80 mg L^{-1} ($P_{DIN} + A_{DIN}$) indicates an increase of the DIN concentrations in the soil of at least $\sim 0.8 \text{ mg L}^{-1}$ (from 1.95 to 2.01 mg L^{-1} at the pre-disturbance period).

We identified the beginning of the impact at 1 May 2007 and its end by the end of the hydrological year 2010/11. This is more than 2 years after the last storm in 2008, which indicates how long the ecosystem takes to recover from the disturbance. Other studies have shown comparable recovery times (Katzensteiner, 2003; Weis et al., 2006) or longer (Huber, 2005). Considering the deviations between DIN simulations by the pre-disturbance calibration and the DIN simulations obtained by the manual adjustment, they sum up to an additional release of 9.9 kg ha^{-1} of DIN over the whole period of ~ 3.7 years, or $2.7 \text{ kg ha}^{-1} \text{ a}^{-1}$ in addition to $5.8 \text{ kg ha}^{-1} \text{ a}^{-1}$ that would have been released without the wind disturbance. These values only correspond to inorganic N. Other studies showed that dissolved organic N can also contribute to vertical percolation but only in small ratios from 2 to 5 % (Solinger et al., 2001; Wu et al., 2009).

The apparent shift of $S_{PH,DIN}$ towards an earlier maximum of DIN release (7 days) is most probably due to the earlier onset of snowmelt in open areas as compared to forests because snowmelt is a major driver of DIN leaching from the soils in our study area (Jost et al., 2010). However, due to the rather slow melting rates, most of the melting water will slowly/diffusively enter the groundwater system rather than flowing rapidly through the karst conduits. Therefore, a slightly earlier beginning of snowmelt may not be visible at the system outlet due to the slow reaction of the groundwater storage.

5.2.2 N propagation through the hydrological system

The virtual tracer injections that we applied with the beginning of the disturbance period elaborate the hydrological system's filter and retardation capacity. Due to their higher dynamics, the soil and the epikarst system adapt more rapidly to the change within weeks and months. Similar behaviour was also found in previous studies (Hartmann et al., 2012a; Kralik et al., 2009). The majority of the simulated flow paths adapt to the virtual tracer signal within a few months, which is in accordance with water isotope studies at the weir (Humer and Kralik, 2008; Kralik et al., 2009). However, using age dating (CFC and SF6) and artificial tracer experiments at individual springs within the study area, Kralik et al. (2009) also found ages from several days to several decades. Hence, the majority of transit times found by the virtual tracer experiment reflect the average behaviour of the sub-catchment drained by the weir, which can be regarded as more dominant than observations at individual the springs that rather represent fast and slow flow paths of minor importance. The retardation is also visible from the dynamics of the DIN concentrations just after the end of the disturbance period (beginning of 2011/12, Fig. 7). Even though DIN production is set to pre-disturbance conditions, it takes almost 4 months for the DIN simulations (by manual calibration) to adapt to their undisturbed concentrations (pre-disturbance calibration). Due to their small contribution ($< 5\%$), the slower flow paths do not have a significant impact on the retardation capacity of the hydrological system.

5.3 Implications

Our results corroborate findings from many other studies that extreme events such as during the wind disturbance period in our study can result in a significant increase in DIN in the runoff, despite the area impacted being relatively small (5–10 % of the watershed). Particularly in karst catchments, such changes can happen quickly and prevail for a significant duration, in our case more than 2 years after the last storm. Due to subsurface heterogeneity, the impact did not travel uniformly through the system. Instead, it split into different pathways and mixed with old water that percolated prior to the impact. In our system, large parts of the water travelled

rapidly through the system. However, a smaller number of pathways had large storages of old water and slow flow velocities, resulting in significant retardation. Taking into account that forest disturbances will most probably increase with climate change (Seidl et al., 2014), DIN mobilization as observed in our study may occur more often and become more intense. The hydrological system may dilute and delay rapid shifts of N concentration, and it will “memorize” the impacts for some time. However, our present analysis showed that the timescale of the wind disturbance on DIN production and leaching from the soil exceeds the timescale of transit of the disturbance through the system. This is most probably due to the small size and the subsurface karstic behaviour of our study site favouring faster flow paths and lower system storage than hydrological systems with larger extent or with other types of geology.

6 Conclusions

In our study we used a process-based semi-distributed karst model to simulate DOC, DIN and SO_4^{2-} transport through a dolomite karst system in Austria. We calibrated and validated our model during a 4-year time period just before a series of heavy storms caused strong wind disturbance to the study site's ecosystem. To quantify its impact we ran the model for the entire disturbance period using the parameters we found at the pre-storm period. The deviations between the simulations and the observations gave us an indication that there was a significant shift in DIN mobilization, its seasonal amplitude and its timing. In estimating the beginning and end of the disturbance period we applied a continuous virtual tracer injection to obtain the mean transit times of the karst system. The transit time distributions showed us how the hydrological system filtered and retarded the impact of the disturbance at the system outlet.

Even though our study is only considering one site and one wind disturbance period, it provides some generally applicable conclusions: (1) hydroclimatic extremes such as storms not only create droughts or floods but can also affect water quality; (2) a hydrological system can filter and delay surface impacts, but it may also memorize past impacts, although only at a limited timescale; and (3) water quality models that have been calibrated without consideration of such external impacts will provide poor predictions. For these reasons we believe that future large-scale simulations of water resources need to include water quality simulations that take into account the impact of ecosystem disturbances. Even without anthropogenic contamination, climate change will strongly affect water quality in our aquifers and streams, and we need to understand processes that affect water quality and prepare ourselves in order to avoid threats to future water supply.

Appendix A

The variability in soil depths in the model is expressed by a mean soil depth, $V_{\text{mean},S}$ [mm], and a distribution coefficient, a_{SE} [–]. The soil storage capacity, $V_{S,i}$ [mm], for every compartment i is calculated by

$$V_{S,i} = (1 - f_{\text{var},S}) \cdot V_{\text{mean},S} + V_{\text{max},S} \cdot \left(\frac{i}{Z}\right)^{a_{SE}}, \quad (\text{A1})$$

where the maximum soil storage capacity $V_{\text{max},S}$ [mm] is derived from $(f_{\text{var},S} \times V_{\text{mean},S})$ as described in Hartmann et al. (2013c). $f_{\text{var},S}$ [–] is the fraction of the soil that shows variable thicknesses, while $(1 - f_{\text{var},S})$ has a uniform value. The same distribution coefficient, a_{SE} , is used to define the epikarst storage distribution by the mean epikarst depth, $V_{\text{mean},E}$ [mm] (derivation of $V_{\text{max},E}$ identical to $V_{\text{mean},S}$):

$$V_{E,i} = V_{\text{max},E} \cdot \left(\frac{i}{Z}\right)^{a_{SE}}. \quad (\text{A2})$$

Actual evapotranspiration from each soil compartment at time step t , $E_{\text{act},i}$, is found by

$$E_{\text{act},i}(t) = E_{\text{pot}}(t) \cdot \frac{\min[V_{\text{Soil},i}(t) + P(t) + Q_{\text{Surface},i}(t), V_{S,i}]}{V_{S,i}}, \quad (\text{A3})$$

where $Q_{\text{surface},i}$ [mm d^{−1}] is the surface inflow originating from compartment $i - 1$ (see Eq. A7), E_{pot} [mm d^{−1}] the potential evaporation, and P [mm d^{−1}] the precipitation at time t . E_{pot} is calculated by the Penman–Wendling approach (Wendling et al., 1991; DVWK, 1996). To account for the solid fraction of precipitation, a snowmelt routine was set at the top of the model. We used the same routine that was applied to 148 other catchments in Austria by Parajka et al. (2007) and explained in Hartmann et al. (2012b). Recharge to the epikarst, $R_{\text{Epi},i}$ [mm d^{−1}], is defined as

$$R_{\text{Epi},i}(t) = \max[V_{\text{Soil},i}(t) + P(t) + Q_{\text{Surface},i}(t) - E_{\text{act},i}(t) - V_{S,i}, 0], \quad (\text{A4})$$

where the storage coefficients $K_{E,i}$ [d] control the outflow of the epikarst:

$$Q_{\text{Epi},i}(t) = \frac{\min[V_{\text{Epi},i}(t) + R_{\text{Epi},i}(t) + Q_{\text{Surface},i}(t), V_{E,i}]}{K_{E,i}} \cdot \Delta t \quad (\text{A5})$$

$$K_{E,i} = K_{\text{max},E} \cdot \left(\frac{Z - i + 1}{Z}\right)^{a_{SE}}. \quad (\text{A6})$$

$K_{\text{max},E}$ is derived by a mean epikarst storage coefficient, $K_{\text{mean},E}$ (see Hartmann et al., 2013c). Excess water from the soil and epikarst that produces surface flow to the next model compartment, $Q_{\text{Surf},i+1}$ [mm d^{−1}], is calculated by

$$Q_{\text{Surf},i+1}(t) = \max[V_{\text{Epi},i}(t) + R_{\text{Epi},i}(t) - V_{E,i}, 0]. \quad (\text{A7})$$

The lower outflow of each epikarst compartment is separated into diffuse ($R_{\text{diff},i}$ [mm d^{−1}]) and concentrated groundwater recharge ($R_{\text{conc},i}$ [mm d^{−1}]) by the recharge separation factor, $f_{C,i}$ [–]:

$$R_{\text{conc},i}(t) = f_{C,i} \cdot Q_{\text{Epi},i}(t), \quad (\text{A8})$$

$$R_{\text{diff},i}(t) = (1 - f_{C,i}) \cdot Q_{\text{Epi},i}(t). \quad (\text{A9})$$

The distribution of $f_{C,i}$ among the different compartments is defined by the distribution coefficient, a_{fsep} :

$$f_{C,i} = \left(\frac{i}{Z}\right)^{a_{\text{fsep}}}. \quad (\text{A10})$$

Diffuse recharge reaches the groundwater compartment below, while concentrated recharge is routed to the conduit system (compartment $i = Z$). The variable contributions of the groundwater compartments that represent diffuse flow through the matrix ($1 \dots Z - 1$) are given by

$$Q_{\text{GW},i}(t) = \frac{V_{\text{GW},i}(t) + R_{\text{diff},i}(t)}{K_{\text{GW},i}}. \quad (\text{A11})$$

$K_{\text{GW},i}$ is calculated by

$$K_{\text{GW},i} = K_C \cdot \left(\frac{Z - i + 1}{Z}\right)^{-a_{\text{GW}}}, \quad (\text{A12})$$

where K_C is the conduit storage coefficient. The groundwater contribution of the conduit system originates from compartment Z :

$$Q_{\text{GW},Z}(t) = \frac{\min\left[V_{\text{GW},Z}(t) + \sum_{i=1}^Z R_{\text{conc},i}(t), V_{\text{crit},\text{OF}}\right]}{K_C}. \quad (\text{A13})$$

With the recharge area A_{max} [km²] known and the dimensions [L s^{−1}] rescaled, the discharge of the entire system Q [L s^{−1}] is calculated by

$$Q(t) = \frac{A_{\text{max}}}{Z} \cdot \sum_{i=1}^Z Q_{\text{GW},i}(t). \quad (\text{A14})$$

Acknowledgements. Financial support is gratefully acknowledged from the Transnational Access to Research Infrastructures activity in the 7th Framework Programme of the EC as part of the ExpeER project and the South East Europe Transnational Cooperation Programme OrientGate for conducting the research. This work was supported by a fellowship within the postdoc programme of the German Academic Exchange Service (DAAD).

Edited by: M. Tzortziou

References

- Andreo, B., Ravbar, N., and Vías, J. M.: Source vulnerability mapping in carbonate (karst) aquifers by extension of the COP method: application to pilot sites, *Hydrogeol. J.*, 17, 749–758, doi:10.1007/s10040-008-0391-1, 2008.
- Aquilina, L., Ladouche, B., and Doerfliger, N.: Water storage and transfer in the epikarst of karstic systems during high flow periods, *J. Hydrol.*, 327, 472–485, 2006.
- Bakalowicz, M.: Karst groundwater: a challenge for new resources, *Hydrogeol. J.*, 13, 148–160, 2005.
- Bernal, S., Hedin, L. O., Likens, G. E., Gerber, S., and Buso, D. C.: Complex response of the forest nitrogen cycle to climate change, 109, 3406–411, doi:10.1073/pnas.1121448109, 2012.
- Beven, K. J.: A manifesto for the equifinality thesis, *J. Hydrol.*, 320, 18–36, 2006.
- Borken, W., Ahrens, B., Schulz, C., and Zimmermann, L.: Site-to-site variability and temporal trends of DOC concentrations and fluxes in temperate forest soils, *Glob. Chang. Biol.*, 17, 2428–2443, doi:10.1111/j.1365-2486.2011.02390.x, 2011.
- Boyer, E. W., Hornberger, G. M., Bencala, K. E., and McKnight, D. M.: Response characteristics of DOC flushing in an alpine catchment, *Hydrol. Process.*, 11, 1635–1647, doi:10.1002/(SICI)1099-1085(19971015)11:12< 1635::AID-HYP494>3.0.CO;2-H, 1997.
- Butscher, C. and Huggenberger, P.: Intrinsic vulnerability assessment in karst areas: A numerical modeling approach, *Water Resour. Res.*, 44, W03408, doi:10.1029/2007WR006277, 2008.
- Butterbach-Bahl, K., Gundersen, P., Ambus, P., Augustin, J., Beier, C., Boeckx, P., Dannenmann, M., Sanchez Gimeno, B., Ibrom, A., and Kiese, R.: Nitrogen processes in terrestrial ecosystems, in *The European nitrogen assessment: sources, effects and policy perspectives*, edited by: Sutton, M. A., Howard, C. M., Erisman, J. W., Billen, G., Bleeker, A., Grennfelt, P., van Grisven, H., and Grizzetti, B., Cambridge University Press, Cambridge, United Kingdom and New York, NY, USA, 99–125, 2011.
- Charlier, J.-B., Bertrand, C., and Mudry, J.: Conceptual hydrogeological model of flow and transport of dissolved organic carbon in a small Jura karst system, *J. Hydrol.*, 460–461, 52–64, doi:10.1016/j.jhydrol.2012.06.043, 2012.
- Christensen, J. H., Hewitson, B., Busuioac, A., Chen, A., Gao, X., Held, I., Jones, R., Kolli, R. K., Kwon, W.-T., Laprise, R., Rueda, V. M., Mearns, L., Menéndez, C. G., Räisänen, J., Rinke, A., Sarr, A., and Whetton, P.: Regional Climate Projections, in *Climate Change 2007: The Physical Science Basis. Contribution of Working Group I to the Fourth Assessment Report of the Intergovernmental Panel on Climate Change*, edited by: Solomon, S., Qin, D., Manning, M., Chen, Z., Marquis, M., Averyt, K. B., Tignor, M., and Miller, H. L., Cambridge University Press, Cambridge, United Kingdom and New York, NY, USA, 996 pp., available at: http://www.ipcc.ch/publications_and_data/publications_ipcc_fourth_assessment_report_wg1_report_the_physical_science_basis.htm (last access: 22 December 2015), 2007.
- COST: COST 65: Hydrogeological aspects of groundwater protection in karstic areas, Final report (COST action 65), edited by: Directorat-General XII Science, European Commission Research and Development, Report EUR, 446 pp., 1995.
- Dai, A.: Increasing drought under global warming in observations and models, *Nature Climate Change*, 3, 52–58, doi:10.1038/nclimate1633, 2012.
- Doerfliger, N., Jeannin, P.-Y., and Zwahlen, F.: Water vulnerability assessment in karst environments: a new method of defining protection areas using a multi-attribute approach and GIS tools (EPIK method), *Environ. Geol.*, 39, 165–176, 1999.
- DVWK: Ermittlung der Verdunstung von Land- und Wasserfläachen (Estimating the evaporation of land and water surfaces), *Merkblätter zur Wasserwirtschaft*, Dtsch. Verband fuer Wasserwirtschaft und Kult. e.V., 238 pp., 1996.
- Einsiedl, F., Maloszewski, P., and Stichler, W.: Estimation of denitrification potential in a karst aquifer using the ^{15}N and ^{18}O isotopes of NO_3^- , *Biogeochemistry*, 72, 67–86, doi:10.1007/s10533-004-0375-8, 2005.
- Erisman, J. W. and Vries, W. de: Nitrogen deposition and effects on European forests, *Environ. Rev.*, 8, 65–93, doi:10.1139/a00-006, 2000.
- Fenicia, F., Kavetski, D., Savenije, H. H. G., Clark, M. P., Schoups, G., Pfister, L., and Freer, J.: Catchment properties, function, and conceptual model representation: is there a correspondence?, *Hydrol. Process.*, 28, 2451–2467, doi:10.1002/hyp.9726, 2014.
- Feyen, L., Vrugt, J. A., Nualláin, B. Ó., van der Knijff, J., and De Roo, A.: Parameter optimisation and uncertainty assessment for large-scale streamflow simulation with the LISFLOOD model, *J. Hydrol.*, 332, 276–289, doi:10.1016/j.jhydrol.2006.07.004, 2007.
- Fleury, P., Plagnes, V., and Bakalowicz, M.: Modelling of the functioning of karst aquifers with a reservoir model: Application to Fontaine de Vaucluse (South of France), *J. Hydrol.*, 345, 38–49, 2007.
- Ford, D. C. and Williams, P. W.: *Karst Hydrogeology and Geomorphology*, Wiley, Chichester, 562 pp., 2007.
- Fröberg, M., Jardine, P. M., Hanson, P. J., Swanston, C. W., Todd, D. E., Tarver, J. R., and Garten, C. T.: Low Dissolved Organic Carbon Input from Fresh Litter to Deep Mineral Soils, *Soil Sci. Soc. Am. J.*, 71, 347–354, doi:10.2136/sssaj2006.0188, 2007.
- Goldscheider, N. and Drew, D.: *Methods in Karst Hydrogeology*, edited by: International Association of Hydrogeologists, Taylor & Francis Group, Leiden, NL, 264 pp., 2007.
- Gough, R., Holliman, P. J., Heard, T. R., and Freeman, C.: Dissolved organic carbon and trihalomethane formation potential removal during coagulation of a typical UK upland water with alum, PAX-18 and PIX-322, *J. Water Supply Res. Technol.*, 63, 650–660, 2014.
- Griffin, J. M., Turner, M. G., and Simard, M.: Nitrogen cycling following mountain pine beetle disturbance in lodgepole pine forests of Greater Yellowstone, *For. Ecol. Manage.*, 261, 1077–1089, doi:10.1016/j.foreco.2010.12.031, 2011.

- Gundersen, P., Schmidt, I. K., and Raulund-Rasmussen, K.: Leaching of nitrate from temperate forests – effects of air pollution and forest management, *Environ. Rev.*, 14, 1–57, doi:10.1139/a05-015, 2006.
- Gupta, H. V., Kling, H., Yilmaz, K. K., and Martinez, G. F.: Decomposition of the mean squared error and NSE performance criteria: Implications for improving hydrological modelling, *J. Hydrol.*, 377, 80–91, doi:10.1016/j.jhydrol.2009.08.003, 2009.
- Hagedorn, F., Schleppi, P., Waldner, P., and Flühler, H.: Export of dissolved organic carbon and nitrogen from Gleysol dominated catchments – the significance of water flow paths, *Biogeochemistry*, 50, 137–161, 2000.
- Harmon, M. E., Bond-Lamberty, B., Tang, J., and Vargas, R.: Heterotrophic respiration in disturbed forests: A review with examples from North America, *J. Geophys. Res.-Biogeosci.*, 116, 1–17, doi:10.1029/2010JG001495, 2011.
- Hartmann, A., Kralik, M., Humer, F., Lange, J., and Weiler, M.: Identification of a karst system's intrinsic hydrodynamic parameters: upscaling from single springs to the whole aquifer, *Environ. Earth Sci.*, 65, 2377–2389, doi:10.1007/s12665-011-1033-9, 2012a.
- Hartmann, A., Lange, J., Weiler, M., Arbel, Y., and Greenbaum, N.: A new approach to model the spatial and temporal variability of recharge to karst aquifers, *Hydrol. Earth Syst. Sci.*, 16, 2219–2231, doi:10.5194/hess-16-2219-2012, 2012b.
- Hartmann, A., Barberá, J. A., Lange, J., Andreo, B., and Weiler, M.: Progress in the hydrologic simulation of time variant recharge areas of karst systems – Exemplified at a karst spring in Southern Spain, *Adv. Water Resour.*, 54, 149–160, doi:10.1016/j.advwatres.2013.01.010, 2013a.
- Hartmann, A., Wagener, T., Rimmer, A., Lange, J., Brielmann, H. and Weiler, M.: Testing the realism of model structures to identify karst system processes using water quality and quantity signatures, *Water Resour. Res.*, 49, 3345–3358, doi:10.1002/wrcr.20229, 2013b.
- Hartmann, A., Weiler, M., Wagener, T., Lange, J., Kralik, M., Humer, F., Mizyed, N., Rimmer, A., Barberá, J. A., Andreo, B., Butscher, C., and Huggenberger, P.: Process-based karst modelling to relate hydrodynamic and hydrochemical characteristics to system properties, *Hydrol. Earth Syst. Sci.*, 17, 3305–3321, doi:10.5194/hess-17-3305-2013, 2013c.
- Hartmann, A., Goldscheider, N., Wagener, T., Lange, J., and Weiler, M.: Karst water resources in a changing world: Review of hydrological modeling approaches, *Rev. Geophys.*, 52, 218–242, doi:10.1002/2013rg000443, 2014a.
- Hartmann, A., Mudarra, M., Andreo, B., Marín, A., Wagener, T., and Lange, J.: Modeling spatiotemporal impacts of hydroclimatic extremes on groundwater recharge at a Mediterranean karst aquifer, *Water Resour. Res.*, 50, 6507–6521, doi:10.1002/2014WR015685, 2014b.
- Hartmann, A., Gleeson, T., Rosolem, R., Pianosi, F., Wada, Y., and Wagener, T.: A large-scale simulation model to assess karstic groundwater recharge over Europe and the Mediterranean, *Geosci. Model Dev.*, 8, 1729–1746, doi:10.5194/gmd-8-1729-2015, 2015.
- Heilman, J. L., Litvak, M. E., McInnes, K. J., Kjølgaard, J. F., Kamps, R. H., and Schwinning, S.: Water-storage capacity controls energy partitioning and water use in karst ecosystems on the Edwards Plateau, Texas, *Ecohydrology*, 7, 127–138, doi:10.1002/eco.1327, 2012.
- Hirabayashi, Y., Mahendran, R., Koirala, S., Konoshima, L., Yamazaki, D., Watanabe, S., Kim, H., and Kanae, S.: Global flood risk under climate change, *Nature Climate Change*, 3, 816–821, doi:10.1038/nclimate1911, 2013.
- Högberg, M. N. and Högberg, P.: Extramatrical ectomycorrhizal mycelium contributes one-third of microbial biomass and produces, together with associated roots, half the dissolved organic carbon in a forest soil, *New Phytol.*, 154, 791–795, doi:10.1046/j.1469-8137.2002.00417.x, 2002.
- Huber, C.: Long lasting nitrate leaching after bark beetle attack in the highlands of the Bavarian Forest National Park., *J. Environ. Qual.*, 34, 1772–1779, doi:10.2134/jeq2004.0210, 2005.
- Huber, C., Baumgarten, M., Göttele, A., and Rotter, V.: Nitrogen turnover and nitrate leaching after bark beetle attack in mountainous spruce stands of the Bavarian Forest National Park, *Water, Air, Soil Pollut. Focus*, 4, 391–414, doi:10.1023/B:WAFO.0000028367.69158.8d, 2004.
- Humer, F. and Kralik, M.: Integrated Monitoring Zöbelboden: Hydrologische und hydrochemische Untersuchungen, Unpubl. Rep. Environ. Agency, Vienna, 34 pp., 2008.
- Johnson, M. S., Billett, M. F., Dinsmore, K. J., Wallin, M., Dyson, K. E., and Jassal, R. S.: Direct and continuous measurement of dissolved carbon dioxide in freshwater aquatic systems — method and applications, *Ecohydrology*, 159, 145–159, doi:10.1002/eco.95, 2010.
- Jost, G., Dirnböck, T., Grabner, M.-T., and Mirtl, M.: Nitrogen Leaching of Two Forest Ecosystems in a Karst Watershed, *Water, Air, & Soil Pollut.*, 218, 633–649, doi:10.1007/s11270-010-0674-8, 2010.
- Jourde, H., Mazzilli, N., Lecoq, N., Arfib, B., and Bertin, D.: KARSTMOD: A Generic Modular Reservoir Model Dedicated to Spring Discharge Modeling and Hydrodynamic Analysis in Karst, in: *Hydrogeological and Environmental Investigations in Karst Systems SE – 38*, vol. 1, edited by: Andreo, B., Carrasco, F., J. Durán, J., Jiménez, P., and LaMoreaux, J. W., 339–344, Springer Berlin Heidelberg, 2015.
- Kaiser, K. and Kalbitz, K.: Cycling downwards – dissolved organic matter in soils, *Soil Biol. Biochem.*, 52, 29–32, doi:10.1016/j.soilbio.2012.04.002, 2012.
- Kalbitz, K., Meyer, A., Yang, R., and Gerstberger, P.: Response of dissolved organic matter in the forest floor to long-term manipulation of litter and throughfall inputs, *Biogeochemistry*, 86, 301–318, doi:10.1007/s10533-007-9161-8, 2007.
- Katz, B. G., Böhlke, J. K., and Hornsby, H. D.: Timescales for nitrate contamination of spring waters, northern Florida, USA, *Chem. Geol.*, 179, 167–186, 2001.
- Katz, B. G., Chelette, A. R., and Pratt, T. R.: Use of chemical and isotopic tracers to assess nitrate contamination and groundwater age, Woodville Karst Plain, USA, *J. Hydrol.*, 289, 36–61, doi:10.1016/j.jhydrol.2003.11.001, 2004.
- Katzensteiner, K.: Effects of harvesting on nutrient leaching in a Norway spruce (*Picea*), *Plant Soil*, 250, 59–73, 2003.
- Kiese, R., Heinzeller, C., Werner, C., Wochele, S., Grote, R., and Butterbach-Bahl, K.: Quantification of nitrate leaching from German forest ecosystems by use of a process oriented biogeochemical model, *Environ. Pollut.*, 159, 3204–14, doi:10.1016/j.envpol.2011.05.004, 2011.

- Klemeš, V.: Dilettantism in Hydrology: Transition or Destiny, *Water Resour. Res.*, 22, 177S–188S, 1986.
- Kobler, J., Jandl, R., Dirnböck, T., Mirtl, M., and Schindlbacher, A.: Effects of stand patchiness due to windthrow and bark beetle abatement measures on soil CO₂ efflux and net ecosystem productivity of a managed temperate mountain forest, *Eur. J. For. Res.*, 13, 683–692, doi:10.1007/s10342-015-0882-2, 2015.
- Kordilla, J., Sauter, M., Reimann, T., and Geyer, T.: Simulation of saturated and unsaturated flow in karst systems at catchment scale using a double continuum approach, *Hydrol. Earth Syst. Sci.*, 16, 3909–3923, doi:10.5194/hess-16-3909-2012, 2012.
- Kralik, M., Humer, F., Grath, J., Numi-Legat, J., Hanus-Illnar, A., Halas, S., and Jelenc, M.: Impact of long distance air pollution on sensitive karst groundwater resources estimated by means of Pb-, S-, O- and Sr-isotopes, in: *Karst, cambio climático y aguas subterráneas*, edited by: Duran, J. J., Andreo, B., and Carrasco, F., Publicaciones del Instituto Geológico y Minero de España, Serie: Hydrogeología y Aguas Subterráneas No 18, Madrid, 311–317, 2006.
- Kralik, M., Humer, F., Papesch, W., Tesch, R., Suckow, A., Han, L. F., and Groening, M.: Karstwater-ages in an alpine dolomite catchment, Austria: 18O, 3H, 3H/3He, CFC and dye tracer investigations, *Geophys. Res. Abstr.*, 11, 11403, European Geosciences Union, General Assembly, 2009.
- Le Moine, N., Andréassian, V., and Mathevet, T.: Confronting surface- and groundwater balances on the La Rochefoucauld-Touvre karstic system (Charente, France), *Water Resour. Res.*, 44, W03403, doi:10.1029/2007WR005984, 2008.
- Lindroos, A. J., Derome, J., Mustajärvi, K., Nöjd, P., Beuker, E., and Helmisäari, H. S.: Fluxes of dissolved organic carbon in stand throughfall and percolation water in 12 boreal coniferous stands on mineral soils in Finland, *Boreal Environ. Res.*, 13, 22–34, 2008.
- Löfgren, S., Fröberg, M., Yu, J., Nisell, J., and Ranneby, B.: Water chemistry in 179 randomly selected Swedish headwater streams related to forest production, clear-felling and climate, *Environ. Monit. Assess.*, 186, 8907–8928, doi:10.1007/s10661-014-4054-5, 2014.
- Mahler, B. J. and Garner, B. D.: Using Nitrate to Quantify Quick Flow in a Karst Aquifer, *Ground Water*, 47, 350–360, doi:10.1111/j.1745-6584.2008.00499.x, 2009.
- Meyer, J. L., Tate, C. M., and Feb, N.: The Effects of Watershed Disturbance on Dissolved Organic Carbon Dynamics of a Stream, 64, 33–44, 1983.
- Michalzik, B., Kalbitz, K., Park, J., Solinger, S., and Matzner, E.: Fluxes and concentrations of dissolved organic carbon and nitrogen—a synthesis for temperate forests, *Biogeochemistry*, 52, 173–205, doi:10.1023/A:1006441620810, 2001.
- Mikkelsen, K. M., Bearup, L. A., Maxwell, R. M., Stednick, J. D., McCray, J. E., and Sharp, J. O.: Bark beetle infestation impacts on nutrient cycling, water quality and interdependent hydrological effects, *Biogeochemistry*, 115, 1–21, doi:10.1007/s10533-013-9875-8, 2013.
- Monteith, S. S., Buttle, J. M., Hazlett, P. W., Beall, F. D., Semkin, R. G., and Jeffries, D. S.: Paired-basin comparison of hydrologic response in harvested and undisturbed hardwood forests during snowmelt in central Ontario: II, Streamflow sources and groundwater residence times, *Hydrol. Process.*, 20, 1117–1136, doi:10.1002/hyp.6073, 2006.
- Neff, J. C. and Asner, G. P.: Dissolved organic carbon in terrestrial ecosystems: Synthesis and a model, *Ecosystems*, 4, 29–48, doi:10.1007/s100210000058, 2001.
- Parajka, J., Merz, R., and Blöschl, G.: Uncertainty and multiple objective calibration in regional water balance modelling: case study in 320 Austrian catchments, *Hydrol. Process.*, 21, 435–446, doi:10.1002/hyp.6253, 2007.
- Perrin, J., Jeannin, P.-Y., and Zwahlen, F.: Epikarst storage in a karst aquifer: a conceptual model based on isotopic data, Milandre test site, Switzerland, *J. Hydrol.*, 279, 106–124, 2003.
- Pinault, J.-L., Pauwels, H., and Cann, C.: Inverse modeling of the hydrological and the hydrochemical behavior of hydrosystems: Application to nitrate transport and denitrification, *Water Resour. Res.*, 37, 2179–2190, 2001.
- Raymond, P. A. and Saiers, J. E.: Event controlled DOC export from forested watersheds, *Biogeochemistry*, 100, 197–209, doi:10.1007/s10533-010-9416-7, 2010.
- Rimmer, A. and Salingar, Y.: Modelling precipitation-streamflow processes in karst basin: The case of the Jordan River sources, Israel, *J. Hydrol.*, 331, 524–542, 2006.
- Rogora, M., Mosello, R., Arisci, S., Brizzio, M. C., Barbieri, A., Balestrini, R., Waldner, P., Schmitt, M., Stähli, M., Thimonier, A., Kalina, M., Puxbaum, H., Nickus, U., Ulrich, E., and Probst, A.: An Overview of Atmospheric Deposition Chemistry over the Alps: Present Status and Long-term Trends, *Hydrobiologia*, 562, 17–40, doi:10.1007/s10750-005-1803-z, 2006.
- Sakamoto, T., Takahashi, M., Terajima, T., Nakai, Y., and Matsuura, Y.: Comparison of the effects of rainfall and snowmelt on the carbon discharge of a small, steep, forested watershed in Hokkaido, northern Japan., *Hydrol. Process.*, 13, 2301–2314, doi:10.1016/j.rse.2007.01.011, 1999.
- Sanderman, J., Lohse, K. A., Baldock, J. A., and Amundson, R.: Linking soils and streams: Sources and chemistry of dissolved organic matter in a small coastal watershed, *Water Resour. Res.*, 45, 1–13, doi:10.1029/2008WR006977, 2009.
- Seidl, R., Schelhaas, M., Rammer, W., and Verkerk, P. J.: Increasing forest disturbances in Europe and their impact on carbon storage, *Nature Climate Change*, 4, 1–6, doi:10.1038/nclimate2318, 2014.
- Solinger, S., Kalbitz, K., and Matzner, E.: Controls on the dynamics of dissolved organic carbon and nitrogen in a Central European deciduous forest, *Biogeochem.*, 55, 327–349, 2001.
- Terajima, T. and Moriizumi, M.: Temporal and spatial changes in dissolved organic carbon concentration and fluorescence intensity of fulvic acid like materials in mountainous headwater catchments, *J. Hydrol.*, 479, 1–12, doi:10.1016/j.jhydrol.2012.10.023, 2013.
- Tissier, G., Perrette, Y., Dzikowski, M., Poulenard, J., Hobléa, F., Malet, E., and Fanget, B.: Seasonal changes of organic matter quality and quantity at the outlet of a forested karst system (La Roche Saint Alban, French Alps), *J. Hydrol.*, 482, 139–148, doi:10.1016/j.jhydrol.2012.12.045, 2013.
- Tritz, S., Guinot, V., and Jourde, H.: Modelling the behaviour of a karst system catchment using non-linear hysteretic conceptual model, *J. Hydrol.*, 397, 250–262, doi:10.1016/j.jhydrol.2010.12.001, 2011.
- Verstraeten, A., De Vos, B., Neirynck, J., Roskams, P., and Hens, M.: Impact of air-borne or canopy-derived dissolved organic carbon (DOC) on forest soil solution DOC

- in Flanders, Belgium, *Atmos. Environ.*, 83, 155–165, doi:10.1016/j.atmosenv.2013.10.058, 2014.
- Vrugt, J. A., Gupta, H. V., Bouten, W., and Sorooshian, S.: A Shuffled Complex Evolution Metropolis algorithm for optimization and uncertainty assessment of hydrologic model parameters, *Water Resour. Res.*, 39, 1201, doi:10.1029/2002WR001642, 2003.
- Vrugt, J. A., Gupta, H. V., Dekker, S. C., Sorooshian, S., Wagener, T., and Bouten, W.: Application of stochastic parameter optimization to the Sacramento Soil Moisture Accounting model, *J. Hydrol.*, 325, 288–307, doi:10.1016/j.jhydrol.2005.10.041, 2006.
- Weis, W., Rotter, V., and Göttlein, A.: Water and element fluxes during the regeneration of Norway spruce with European beech: Effects of shelterwood-cut and clear-cut, *For. Ecol. Manage.*, 224, 304–317, doi:10.1016/j.foreco.2005.12.040, 2006.
- Weishaar, J. L., Aiken, G. R., Bergamaschi, B. A., Fram, M. S., Fujii, R., and Mopper, K.: Evaluation of Specific Ultraviolet Absorbance as an Indicator of the Chemical Composition and Reactivity of Dissolved Organic Carbon, *Environ. Sci. Technol.*, 37, 4702–4708, doi:10.1021/es030360x, 2003.
- Wendling, U., Schellin, H.-G., and Thomä, M.: Bereitstellung von täglichen Informationen zum Wasserhaushalt des Bodens für die Zwecke der agrarmeteorologischen Beratung – The supply of daily information on the water budget of the soil as a contribution to the agrometeorological advice, *Zeitschrift für Meteorol.*, 41, 468–475, 1991.
- WRB: World reference base for soil resources, edited by: FAO, IUSS Working Group, Rome, available at: <http://www.fao.org/ag/agl/agll/wrb/doc/wrb2006final.pdf> (last access: 22 December 2015), 2006.
- Wu, H., Peng, C., Moore, T. R., Hua, D., Li, C., Zhu, Q., Peichl, M., Arain, M. A., and Guo, Z.: Modeling dissolved organic carbon in temperate forest soils: TRIPLEX-DOC model development and validation, *Geosci. Model Dev.*, 7, 867–881, doi:10.5194/gmd-7-867-2014, 2014.
- Wu, Y., Clarke, N., and Mulder, J.: Dissolved Organic Nitrogen Concentrations and Ratios of Dissolved Organic Carbon to Dissolved Organic Nitrogen in Throughfall and Soil Waters in Norway Spruce and Scots Pine Forest Stands Throughout Norway, *Water, Air, Soil Pollut.*, 210, 171–186, doi:10.1007/s11270-009-0239-x, 2009.