

August 2002

**Journal of cave and karst studies Continues NSS bulletin (OCLC:  
2087737)**

Speleological Society National

Follow this and additional works at: [https://digitalcommons.usf.edu/kip\\_articles](https://digitalcommons.usf.edu/kip_articles)

---

**Recommended Citation**

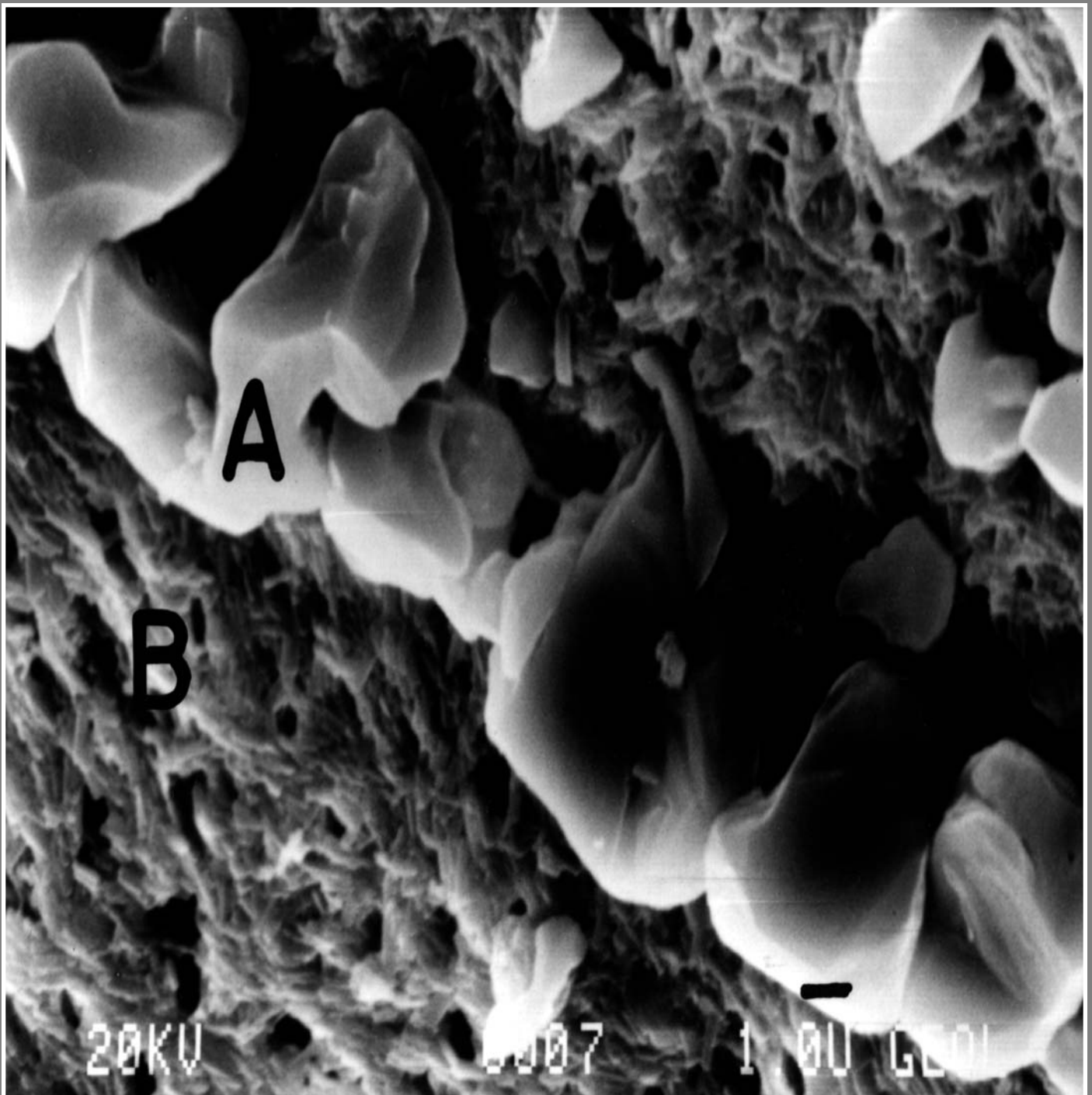
National, Speleological Society, "Journal of cave and karst studies Continues NSS bulletin (OCLC: 2087737)" (2002). *KIP Articles*. 2839.

[https://digitalcommons.usf.edu/kip\\_articles/2839](https://digitalcommons.usf.edu/kip_articles/2839)

This Article is brought to you for free and open access by the KIP Research Publications at Digital Commons @ University of South Florida. It has been accepted for inclusion in KIP Articles by an authorized administrator of Digital Commons @ University of South Florida. For more information, please contact [scholarcommons@usf.edu](mailto:scholarcommons@usf.edu).

# JOURNAL OF CAVE AND KARST STUDIES

August 2002  
Volume 64 Number 2  
ISSN 1090-6924  
A Publication of the National  
Speleological Society



# Journal of Cave and Karst Studies of the National Speleological Society

Volume 64 Number 2 August 2002

## CONTENTS

- A Pleistocene tapir and associated mammals from the southwestern Ozark Highland  
*Nicholas J. Czaplewski, William L. Puckette, and Clayton Russell* 97
- Petrographic and geochemical screening of speleothems for U-series dating: An example from recrystallized speleothems from Wadi Sannur Cavern, Egypt  
*L. Bruce Railsback, Adel A. Dabous, J.K. Osmond, and C.J. Fleisher* 108
- A late Quaternary paleoecological record from caves of southern Jamaica, West Indies  
*D.A. McFarlane, J. Lundberg, and A. G. Fincham* 117
- Leg attenuation and seasonal femur length: Mass relationships in cavernicolous crickets (Orthoptera: Gryllidae and Rhaphidophoridae)  
*Eugene H. Studier, Kathleen H. Lavoie, and Francis G. Howarth* 126
- Middle Pleistocene karst evolution in the State of Qatar, Arabian Gulf  
*Abdulali M. Sadiq and Sobhi J. Nasir* 132
- Aggregate protection against dehydration in adult females of the cave cricket, *Hadenocercus cumberlandicus* (Orthoptera, Rhaphidophoridae)  
*Jay A. Yoder, Horton H. Hobbs III, and Matthew C. Hazelton* 140
- Blue bone analyses as a contribution to the study of bone taphonomy in San Josecito Cave, Nuevo Leon, Mexico  
*Jasinto Robles, Joaquin Arroyo-Cabrales, Eileen Johnson, B.L. Allen, and Georgina Izquierdo* 145

The *Journal of Cave and Karst Studies* (ISSN 1090-6924) is a multi-disciplinary, refereed journal published three times a year by the National Speleological Society, 2813 Cave Avenue, Huntsville, Alabama 35810-4431 USA; (256) 852-1300; FAX (256) 851-9241, e-mail: [nss@caves.org](mailto:nss@caves.org); World Wide Web: <http://www.caves.org/~nss/>. The annual subscription fee, worldwide, by surface mail, is \$18 US. Airmail delivery outside the United States of both the *NSS News* and the *Journal of Cave and Karst Studies* is available for an additional fee of \$40 (total \$58); The *Journal of Cave and Karst Studies* is not available alone by airmail. Back issues and cumulative indices are available from the NSS office. POSTMASTER: send address changes to the *Journal of Cave and Karst Studies*, 2813 Cave Avenue, Huntsville, Alabama 35810-4431 USA.

Copyright © 2002 by the National Speleological Society, Inc. Printed on recycled paper by American Web, 4040 Dahlia Street, Denver, Colorado 80216 USA

Front cover: SEM image of blue-greenish bone showing calcite crystals (A) over phosphatized bone (B). Scale bar on lower right side equals 1  $\mu$ . See Robles, Arroyo-Cabrales, Johnson, Allen, and Izquierdo page 145.

## Editor

**Louise D. Hose**

Department of Physical Sciences  
Chapman University  
Orange, CA 92866  
(714) 997-6994 Voice  
(714) 532-6048 FAX  
[hose@chapman.edu](mailto:hose@chapman.edu)

## Production Editor

**James A. Pisarowicz**

Wind Cave National Park  
Hot Springs, SD 57747  
(605) 673-5582  
[pisarowicz@alumni.hamline.edu](mailto:pisarowicz@alumni.hamline.edu)

## BOARD OF EDITORS

### Anthropology

**Patty Jo Watson**

Department of Anthropology  
Washington University  
St. Louis, MO 63130  
[pjwatson@artsci.wustl.edu](mailto:pjwatson@artsci.wustl.edu)

### Conservation

**Julian J. Lewis**

J. Lewis & Associates, Biological Consulting  
217 West Carter Avenue  
Clarksville, IN 47129  
(812) 283-6120  
[lewisbioconsult@aol.com](mailto:lewisbioconsult@aol.com)

## Earth Sciences-Journal Index

**Ira D. Sasowsky**

Department of Geology  
University of Akron  
Akron, OH 44325-4101  
(330) 972-5389  
[ids@uakron.edu](mailto:ids@uakron.edu)

### Exploration

**Andrea Futrell**

987 Dow Creek Road  
Pembroke, VA 24136  
(540) 626-5349  
[karstmap@hotmail.com](mailto:karstmap@hotmail.com)

### Life Sciences

**Steve Taylor**

Center for Biodiversity  
Illinois Natural History Survey  
607 East Peabody Drive (MC-652)  
Champaign, IL 61820-6970  
(217) 333-5702  
[sjtaylor@inhs.uiuc.edu](mailto:sjtaylor@inhs.uiuc.edu)

### Social Sciences

**Marion O. Smith**

Rt. 1, Box 462A  
Bone Cave Rd.  
Rock Island, TN 38581  
931-686-2320  
[sharon42689@blomand.net](mailto:sharon42689@blomand.net)

### Book Reviews

**Ernst H. Kastning**

P.O. Box 1048  
Radford, VA 24141-0048  
[ehkastni@runet.edu](mailto:ehkastni@runet.edu)

### Proofreader

**Donald G. Davis**

## JOURNAL ADVISORY BOARD

David Ashley	Rane Curl
Malcolm Field	Andrew Flurkey
John Ganter	Donald MacFarlane
Diana Northup	Art Palmer
	William White