

April 2006

International Journal of Speleology

Speleologica Italiana Società

Follow this and additional works at: https://digitalcommons.usf.edu/kip_articles

Recommended Citation

Società, Speleologica Italiana, "International Journal of Speleology" (2006). *KIP Articles*. 2783.
https://digitalcommons.usf.edu/kip_articles/2783

This Article is brought to you for free and open access by the KIP Research Publications at Digital Commons @ University of South Florida. It has been accepted for inclusion in KIP Articles by an authorized administrator of Digital Commons @ University of South Florida. For more information, please contact digitalcommons@usf.edu.



Available online at www.ij.s.speleo.it

International Journal of Speleology

Official Journal of Union Internationale de Spéléologie



Thermal Variations in the Hyporheic Zone of a Karst Stream

Toby Dogwiler¹ and Carol Wicks²



Re-published from: *Speleogenesis and Evolution of Karst Aquifers* 3 (1), www.speleogenesis.info, 11 pages (ISSN 1814-294X).

Abstract:

Dogwiler T. and Wicks C. 2006. Thermal Variations in the Hyporheic Zone of a Karst Stream
International Journal of Speleology, 35 (2), 59-66. Bologna (Italy). ISSN 0392-6672.

This investigation quantifies how temperatures in the streambed sediments of a karst stream fluctuate in relation to discharge, seasonal, and diurnal temperature variations as the stream passes through a karst window. Furthermore, the linkages between meteorological processes and temperature variation in the hyporheic zone are delineated. Examination of a high-resolution, three dimensional record of temperature variation in a karst stream substrate provides insight into thermal disturbances in the hyporheic zone. Temperatures in the upper portion of the hyporheic zone are strongly linked to air temperatures via the surface water. The variation is considerably less as depth increases. The annual temperature variation in the lower portion of the shallow hyporheic zone is reduced by one-third, relative to the variation observed in the surface water and upper substrate. During storm events, the upper portion (0-5 cm) of the shallow hyporheic zone is subject to a thermal regime very similar to surface stream water. However, below these depths the sharpest temperature fluctuations are effectively muted within the stream substrate. More frequent diurnal variations, particularly those associated with baseflow conditions, are also dampened within the substrate.

Keywords: hyporheic, thermal variation, stream

Received 10 November 2005; Revised 23 February 2006; Accepted 24 February 2006

INTRODUCTION

Water flowing through a cave system is brought into thermal equilibrium with the bedrock through conductive and advective processes (Lismonde, 2002). As a result, water residing in a karst system long enough will fully equilibrate to an ambient temperature that is a direct reflection of mean annual temperature. It seems logical that the interplay between residence time, thermal gradients between the surface and subsurface streams, flow volumes, and geometry of the cave system determines the length of time required for thermal equilibration. During periods of high hydrologic input into the system, water may be transmitted too rapidly, or in too great a volume, to thermally equilibrate. The characteristics of thermal equilibration processes will influence the thermal regime in which organisms and communities within the

karst system function (White et al., 1987). Although, the excellent work by Lismonde (2002) focuses on the transfer of heat to and from the cave atmosphere and provides a mathematical framework for understanding transfer of heat to and from cave and karst streams; detailed investigations of the magnitude, frequency, and mechanisms of heat transfer in karst streams and substrates are lacking.

The goal of this research is to investigate the relations among discharge (magnitude and frequency), meteorological phenomena, and thermal variations in karst stream systems. Specifically, the response of the shallow hyporheic zone (first 15-20 cm of substrate) to thermal variations associated with seasonal changes, frontal passages, storm-induced flood events, and diurnal variation is examined. If the hyporheic zone serves as a thermal buffer, then large, rapid temperature fluctuations in the surface water should not be observed in the shallow hyporheic zone. The hyporheic response to thermal variation is evaluated with a high resolution, three-dimensional (vertical and longitudinal, as well as temporal) dataset collected in a karst stream reach. Insight into thermal processes

1) Department of Geoscience, P.O. Box 5838, Winona State University, Winona MN 55987-5838, tdogwiler@winona.edu

2) Department of Geological Sciences, University of Missouri, Columbia MO 65211-1380, wicks@missouri.edu

in the hyporheic zone is provided by exploring the following questions:

- 1) How do substrate temperatures vary vertically and longitudinally downstream?
- 2) What is the role of annual, seasonal, and diurnal temperature variation in regulating stream and substrate water temperature?
- 3) How does variation in discharge related to storm-induced flood events affect stream water and substrate water temperature?

METHODS

Study locality

The field study was conducted in the Karst Window reach of the Devils Icebox Karst System (DIB) in central Missouri (Figure 1). The Karst Window is located in the downstream portion of the DIB system and is interpreted as a collapsed cave passage. Water flows from Connor's Cave through the window and then under a rock bridge. Upon emergence from the rock bridge, the stream flows into non-karst areas.

Hydrologic insight is provided by previous studies of this system (Halihan et al., 1998; Wicks, 1997; Wicks & Engeln, 1997) and 2.25 years of discharge records (5 minute sampling interval) provided by Robert Lerch of the USDA-Agricultural Research Station at the

University of Missouri. Discharge data were collected at a gaging station in the Karst Window (Figure 2) using a data logging pressure transducer placed in a stilling well at the edge of the stream channel to measure stage height (Lerch and others, 2001). The gage record provides timing and relative magnitude of baseflow and storm-induced discharges.

DIB is formed in the Mississippian Burlington Limestone and has surface and subterranean drainage components. Recharge for DIB is allogenicly derived from sinking streams and sinkhole drainage. Surface water is diverted mainly from a losing reach of Bonne Femme Creek and pirated by the cave system westward into the adjacent Little Bonne Femme watershed. The drainage basin for Devils Icebox is 31.6 km², as defined by surface-water drainage patterns, dye tracing, and topography (St. Ivany, 1988).

Climatic setting

Central Missouri has a humid middle latitude temperate climate. Based on the Köppen classification system (see Lutgens & Tarbuck, 1995) Missouri is categorized as C_{fa}, indicating mild winters and warm summers (Figure 3). The mean annual temperature is 12.5°C. In an average year, 48 days have a high temperature greater than 32°C and there are 113 days with lows of 0°C or less. Precipitation is relatively evenly distributed throughout the year, with minimum precipitation in January and February and maximum in May and June. On average, measurable precipitation occurs every 3.2 days and a 24-hour, 12.7 mm (0.5 inch) rain event occurs every 13.9 days.

Climatic Data were based on 1970-2000 daily summary observations at Columbia Regional Airport Weather Station and 1961-1990 (with extremes from 1890-2000) summary climate data from the Jefferson City Water Plant weather station (U.S. Cooperative Network Station 234271). All data are available from the Midwest Regional Climate Center.

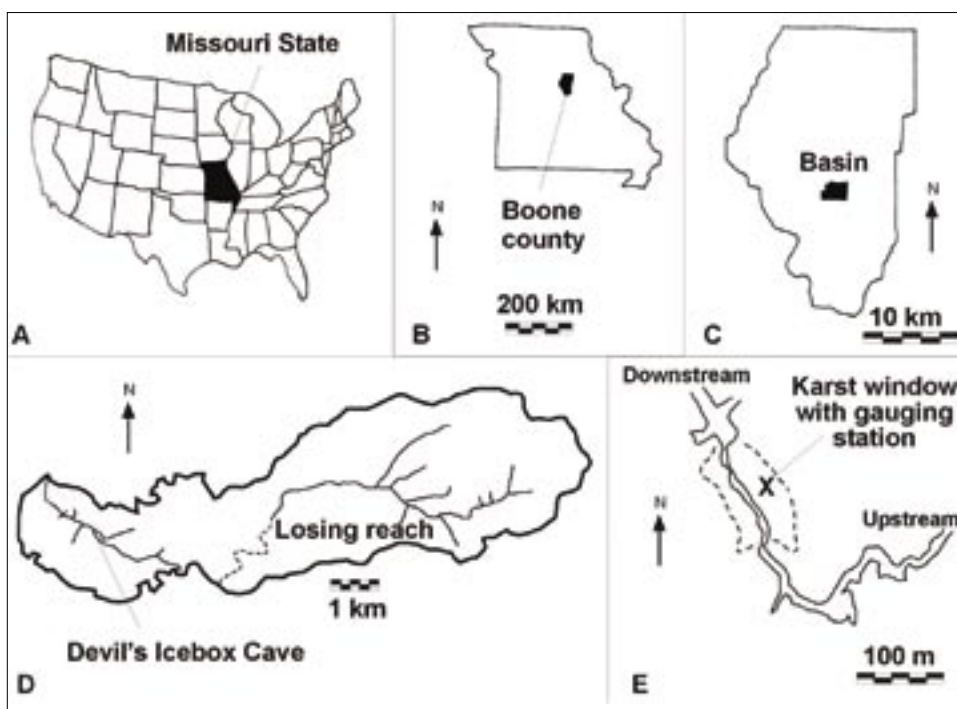


Fig. 1. a) Map showing Missouri in relation to other states, b) map showing Boone County within Missouri, c) map showing basin within Boone County, d) map of basin showing losing stream and main cave passage, and e) detailed map of karst window showing gauging station location. (Modified from Deike and others 1960; St. Ivany 1988; Wicks and Engeln 1997).

Data collection

The longitudinal (upstream and downstream) and vertical thermal variations in the Karst Window substrate were measured using Onset Tidbit® temperature data loggers with an accuracy of 0.2°C and a resolution of 0.16°C. Four stations were established in May 2000 with three temperature data loggers each (Figure 2). At each station, data loggers were emplaced at the base

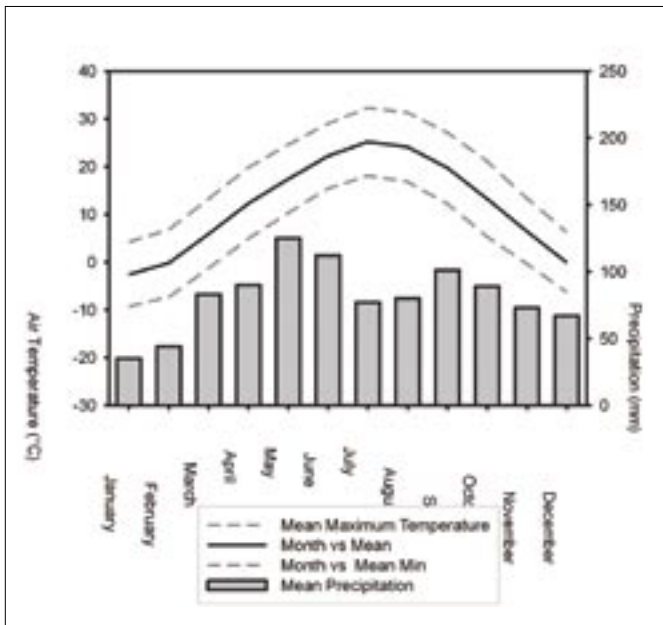


Fig. 2. Summary of mean annual temperature and precipitation for central Missouri.

of the armor layer (coarse upper layer of sediment) 1-3 cm deep, at 7-10 cm deep, and at a 15-20 cm deep in the substrate. After installation of the data loggers, each station was back-filled with the sediment removed from the hole. During pilot studies conducted prior to this investigation, we qualitatively observed that fine sediment (sand and silt) disturbed or lost during excavation were naturally replaced on the timescale of days. Indeed, the sorting, size range, and compaction of the sediments seemed identical during excavation and re-excavation. In addition to substrate water temperatures, surface water temperature and stream stage were measured using a data logger and pressure transducer, respectively. All data were collected at a 15 minute interval during summer and fall 2000 and winter and spring 2001 (Table 1).

Data Collection		
station	start	finish
1	May 27, 2000	November 1, 2000
2	May 27, 2000	July 9, 2000
3	May 27, 2000	August 8, 2000
4	May 27, 2000	July 9, 2000
1	February 8, 2001	July 6, 2001
2	February 8, 2001	Not Recovered

Table 1. Data collection periods at the temperature data logging stations in the Karst Window. Note that complete substrate water temperatures are only available at station 1 for all periods.

Hourly meteorological data (including, temperature, incoming solar radiation, precipitation, and humidity) were obtained at a nearby (~9 km north) automated weather station (Sanborn Field) maintained by the University of Missouri Agricultural Experiment Station.

Meteorological conditions likely vary to some degree between Sanborn Field and the Karst Window because of the intervening distance. However, general trends in the data collected at Sanborn Field are in good agreement with trends observed in the data collected at the Karst Window. For example, the timing and magnitude of precipitation at Sanborn field matches related characteristics of discharge events at the Karst Window. Solar radiation will be especially influenced by factors such as vegetative shading. However, as discussed later, the overall pattern and magnitude of solar radiation measured at Sanborn Field can be recognized in the thermal signature of the stream and substrate water at the Karst Window.

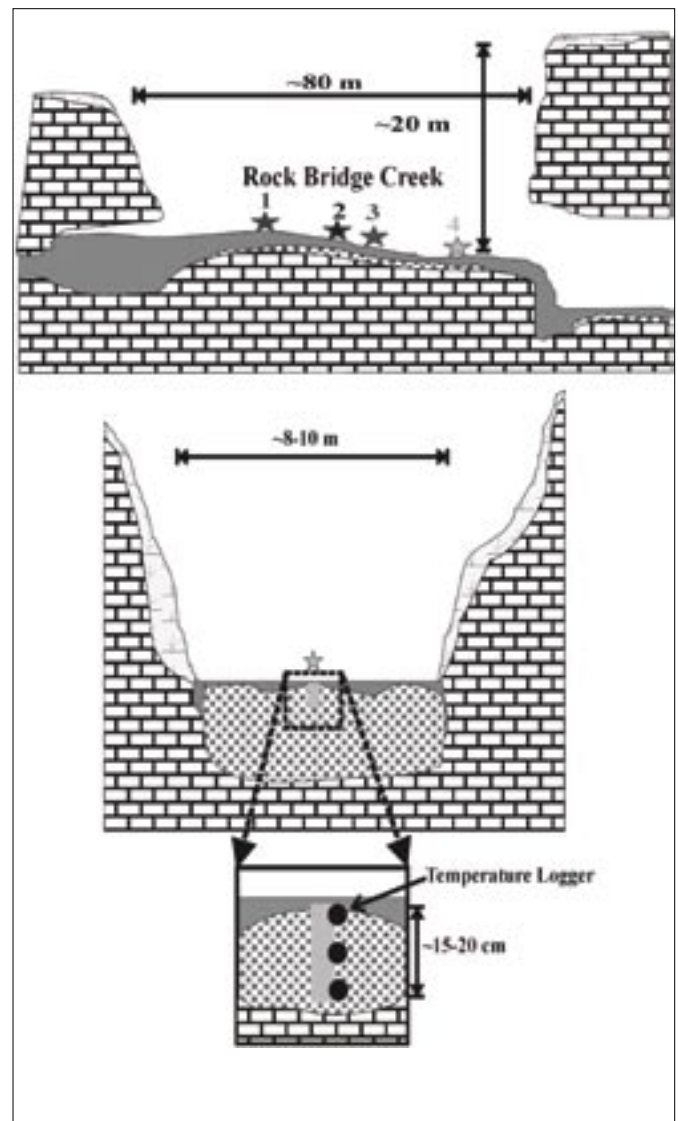


Fig. 3. Schematic Diagram of the Karst Window Study Locality, Rock Bridge State Park, Boone County, Missouri. Data logging stations are labeled numerically in the longitudinal cross section (top). The vertical placement of data loggers is depicted in the lower diagram that is oriented perpendicular to flow.

RESULTS AND ANALYSIS

Figure 4 provides an overview of the relation between air temperature, precipitation, and substrate water temperatures. The duration of data collection and sampling interval yielded a large number of observations. To facilitate the discussion, selected periods of data have been plotted individually in order to highlight the details of the thermal processes and variation. The periods selected for presentation are representative of conditions over the duration of the investigation. Furthermore, for periods with data from multiple stations, only data from stations 1 and 4 will normally be presented because observations at stations 2 and 3 represent a continuum of conditions intermediate between those at stations 1 and 4.

Warm-weather Conditions—late Spring, Summer, early Autumn

Baseflow Condition – June 1 to June 10

During baseflow conditions, diurnal temperature variation dominates (June 1 to June 10). There is a correlation between air temperature, substrate water temperature, and amount of incoming solar radiation (Figure 5). On cloudy days (e.g., June 5 and 10) the daily air temperature range is reduced, as is the substrate water temperature range. Typically the peak diurnal temperature occurs at 14:00, which is one hour past the maximum sun angle, or true noon (because of daylight savings time). The one hour lag is likely caused by thermal inertia and the geometry

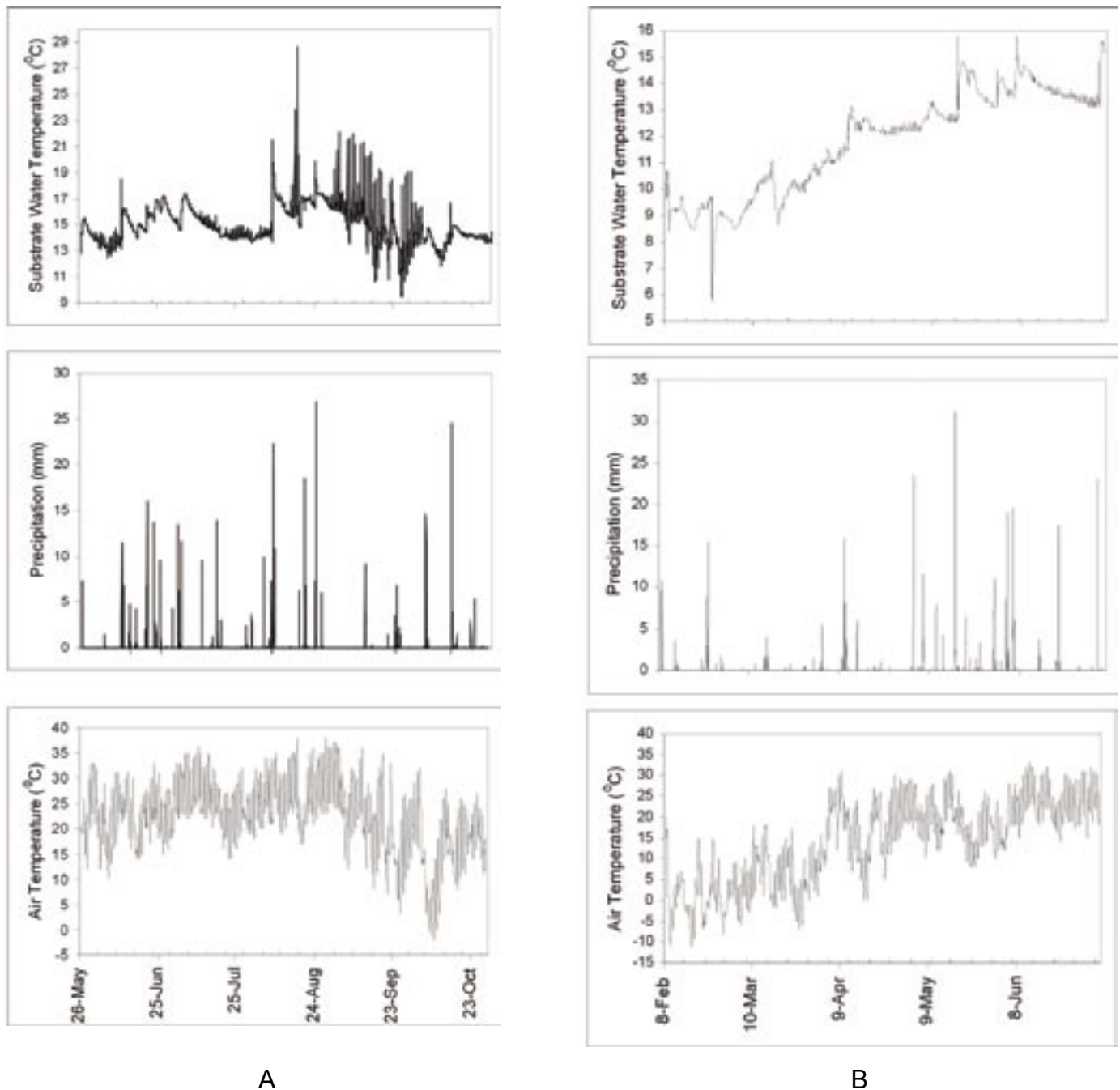


Figure 4. Air temperature, precipitation, and substrate water temperatures for winter and spring 2001. Substrate water temperatures are plotted for the data loggers at station 1.

of the Karst Window. The depression which contains the Karst Window is oriented north-south with steep east-west facing valley faces. The steepness and orientation of the Karst Window, in combination with the tall tree canopy on either side of the channel, partially blocks the sun except during early to mid-afternoon. Obviously, intermittent cloud cover on an otherwise sunny day (e.g., cumulus clouds), or other atmospheric conditions, also regulate the timing of peak diurnal temperature in the stream.

During baseflow conditions, temperatures in the substrate vary both longitudinally (parallel to flow) and vertically. Over the ten day baseflow period, the temperature range at station 1 is 1.4°C (bottom logger) to 2.0°C (top logger) and temperatures in the upper substrate display greater variation than temperatures in the lower substrate. Station 4, located approximately 60 m from the cave spring, shows considerably more variation than station 1. In the vertical dimension, the mean daily temperature range below the armor layer (top data logger) is 4.8°C with a total range for the period of 10.2°C. The loggers in the lower part of the shallow hyporheic zone show daily variations of 2.2-3.0°C and a total range for the period of 4.9-5.7°C. Thus, at both stations 1 and 4, daily and longer-term temperature fluctuations are reduced by approximately half with depth in the hyporheic zone. If this trend extrapolates linearly into the shallow hyporheic zone, then no variation in substrate water temperature should occur at depths greater than 30-40 cm. The mean temperature in the lower substrate over this baseflow period at station 4 was 15.5°C indicating that the water warmed by an average of ~2°C over the 40 m interval between the stations.

Storm-Induced Conditions- June 11 to June 28

Storm-induced discharge events are triggered by frontal passages and convective storms. The magnitude and intensity of precipitation required to affect discharge in the DIB system is dependent upon antecedent conditions including recent precipitation, soil moisture, and evapotranspiration rates. During summer conditions, storms with a minimum intensity of 10 mm/hr and a total rainfall of 10 mm or greater generally result in increased discharge at the Karst Window. Such events occur approximately 2-3 times per month, on average, in central Missouri. During increased discharge, flow characteristics and water quality parameters are affected, including water temperature.

Changes occur in the longitudinal and vertical temperature regime in the Karst Window at the onset of storm-induced discharge conditions. At the beginning of a storm pulse (Figure 5) there is a short-lived (<30 min) temperature spike (0.5-5°C) in the substrate. The spike is most pronounced at the downstream stations, the upper substrate (top data logger). On June 20, 2000, the temperature spike in the upper substrate at station 4 was ~4.5°C. The magnitude of the spike tends to correspond with the amount and

intensity of the precipitation. Lower in the substrate, the temperature spike diminished to 0.3°C and lagged ~45 minutes behind the peak in the upper substrate. Based on these observations, the temperature spikes may be caused by subsurface throughflow derived from soil water in the adjacent valley slopes that is flushed into the stream channel and upper substrate. The largest spikes usually follow prolonged baseflow periods, suggesting that the soil water has been heated *in situ* by extended exposure to solar radiation. After the spike, temperatures rapidly equalize vertically and longitudinally downstream and steadily rise during the ascending limb of the hydrograph. Peak discharge lags 2-4 hours behind the precipitation event because of transit times through the system (Halihan et al, 1998). Subsequently, substrate temperatures steadily decrease (~0.25°C/day) over a period of several days until baseflow conditions reestablish and the diurnal fluctuations begin to dominate.

Cool-weather Conditions—late Autumn, Winter, early Spring

Baseflow Conditions- February 14 – February 23

During cooler weather, the relation between substrate water temperature variations and discharge conditions is similar to that observed during warm-weather periods; however, the thermal gradient in the substrate may be inverted (Figure 6). When air temperatures are near or below the mean annual temperature (12.5°C), temperatures usually increase with depth in the substrate. From February 14-18, 2001, air temperatures remained below mean annual temperature, resulting in a thermal inversion in the stream substrate.

Additionally, air and water temperatures are not synchronized with incoming solar radiation. During cold weather, when Arctic and polar air masses associated with high pressure ridges invade the region, several consecutive sunny days are typically required before warming is initiated in the stream substrate and surface water. As shown in Figure 6, five consecutive sunny days (February 16-20) were required to warm the substrate water just 0.75°C and there was a two day lag before warming initiated. During this period, substrate (upper and lower) and surface water temperatures are well correlated.

Storm-Induced Conditions – February 24 – February 28

Substrate temperature trends during storm-induced discharge are dependent upon the temperature of the precipitation. The passage of a warm front through mid-Missouri on February 23-24, 2001, resulted in a dramatic drop in substrate temperatures (Figure 6). The warm front approached the area at a time when there was ~30 mm of snow on the ground and air temperature had remained below freezing for 63 hours. The initial rainfall (~37 mm) preceding the frontal passage fell during a period of gradual warming to a

mean temperature of 2.5°C. Thus, the hydrologic system experienced a rapid influx of a large volume of very cold water. The temperature in the lower substrate did not decrease as much as in the upper substrate. The bottom data logger recorded minimum temperatures 1.25°C warmer than the upper and middle data loggers (versus about 0.5°C range during warm-weather conditions). Around 06:00 on February 24, the front moved into the region and temperatures rose quickly to 14°C, yielding warmer precipitation, which rapidly reversed the temperature drop.

DISCUSSION

Temperatures in the upper hyporheic zone are largely a function of air temperature (Figures 4, 5, and 6). Over the complete period of observation (Table 1) the temperature range of the upper substrate, and presumably the surface water (only have data for station 2), was 15.8°C, whereas the lower substrate temperatures varied by 10.9°C. General trends in the substrate temperature correspond with trends in the air temperature, although the absolute range of air temperatures is much larger (mean annual temperature range is ~33°C). Thus, the temperature range in the substrate is muted relative to the air temperature range.

During summer baseflow conditions, thermal gradients in the substrate tend to be steeper than for analogous cool-weather events. This is likely due to the greater effectiveness of solar radiation at heating the stream during the summer months. Solar radiation is not as effective during the winter months because of lower sun angles and shorter daylight intervals. Winter baseflow conditions tend to develop an inverted substrate temperature gradient when ambient air temperatures are below 12-13°C. As air temperatures approach (cooling or warming) mean annual temperature - 12.5°C - vertical homogenization of substrate temperatures occurs because water exiting the cave is in equilibrium with mean annual temperature (e.g., see Figure 6 between the thermal inversions). Therefore, the relation between upper and lower substrate temperatures is dependent upon differences in discharge, meteorological conditions, and seasonal variations.

The greatest downstream temperature

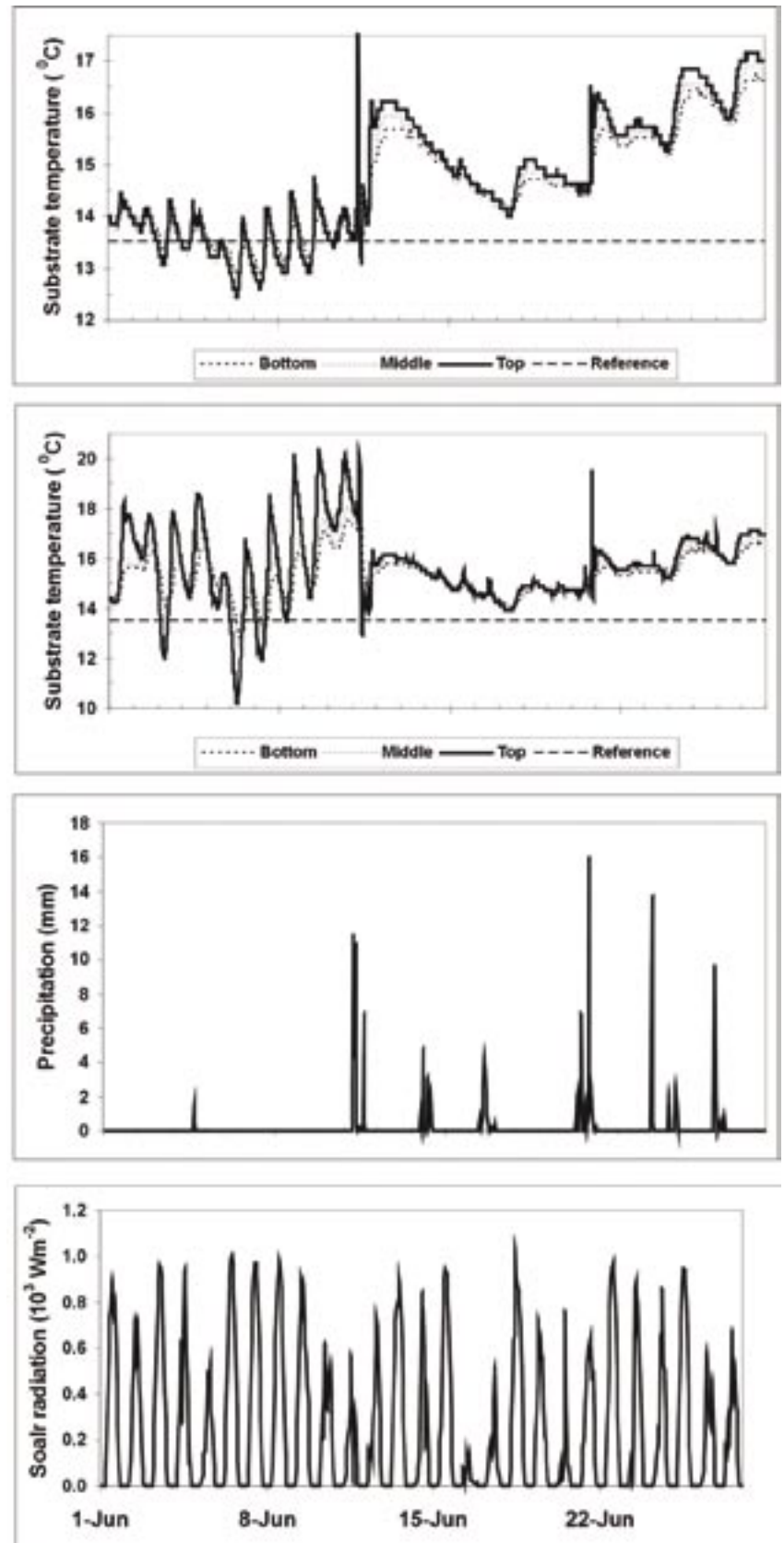


Figure 5. Variations in substrate water temperature at stations 1 and 4 in the Karst Window for the period June 1- 27, 2000. The data from Station one are shown in a) and the data from Station four are shown in b). Solar radiation (c) and precipitation (d) are also shown. A reference line at 13.5°C is shown in panels a and b as a point of comparison for the downstream increase in substrate water temperature.

variation occurs in the upper substrate, and may equate to several Celsius degrees over a 60 meter interval. Unfortunately, longitudinal variation during winter baseflow events could not be fully assessed because of the loss of station 4 (Table 1). A large degree of warming occurs between stations 2 and 3 during warm weather conditions, so it is possible that a similar, but opposite, trend would occur between the stations in cold-weather conditions due to heat loss at the air-water interface. Thus, longitudinal thermal variations during summer baseflow conditions occur quite rapidly and are attributable to the input of solar radiation.

Storm-induced discharge conditions are characterized by a near vertical and longitudinal homogenization of temperature in substrate and surface water. This decrease in thermal variation is likely a result of the volume of discharged water overcoming the equilibration capabilities of the system. In most cases, precipitation inputs cause a warm pulse to move through the system. However, winter events, particularly those associated with snow melt and near-freezing precipitation, can cause cool pulses with

steep thermal gradients (Figure 6). Thus, seasonality plays a role in the predominant direction (warming or cooling) of thermal variation. The largest short-term variations experienced regularly by the system are the temperature spikes related to subsurface throughflow from the adjacent valley slopes. These spikes are very short duration (<30 minutes) and diminish with depth in the substrate.

The ability of the hyporheic zone to moderate temperature change appears to be proportional to the intensity of the thermal event. Exploring this relation is worthy of future research. One possible hypothesis is that the hydraulic conductivity of the sediments may determine the thermal buffering capability of a substrate. Higher hydraulic conductivities should allow more rapid interchange between surface and substrate waters, thereby decreasing the ability to dampen thermal fluxes. Conversely, low hydraulic conductivities would effectively moderate thermal variation.

FINAL CONSIDERATIONS

This discussion and conclusions have to be understood with the field setting in mind. First, our observations are from a reach of cave stream as it flows through a karst window (direct solar input). Second, the karstic basin is small and receives most of its water via a losing stream. Third, the basin is in central Missouri where thunderstorms are common. Thus, it is not surprising that the temperature in the streambed sediments is controlled by a balance between solar radiation, temperature, and mass of water in the losing reach. There are thousands of cave streams in similar localities throughout the midwestern United States. It is likely that the thermal characteristics of the hyporheic zone in the Karst Window are representative of those in caves that occur in fluviokarst systems in temperate climates elsewhere in the world. Finally, this initial study allows the formulation of a physical and process-driven model that is being tested with new observations.

How do substrate temperatures vary vertically and longitudinally downstream?

The relation between upper and lower substrate temperatures is dependent upon differences in discharge, meteorological conditions, and seasonal variation. The upper portion (0-5 cm) of the shallow hyporheic zone is subject to a thermal regime very similar to surface stream water. However, below these depths the sharpest temperature fluctuations are effectively muted within the stream substrate. For example, rapid cool pulses and warm spikes diminish quickly with depth in the substrate (Figures 5 and 6). More frequent diurnal variations, particularly those associated with baseflow conditions, are also dampened within the substrate. Temperature fluctuations are also reduced longitudinally in the lower substrate with respect to simultaneous changes in the surface and upper substrate waters.

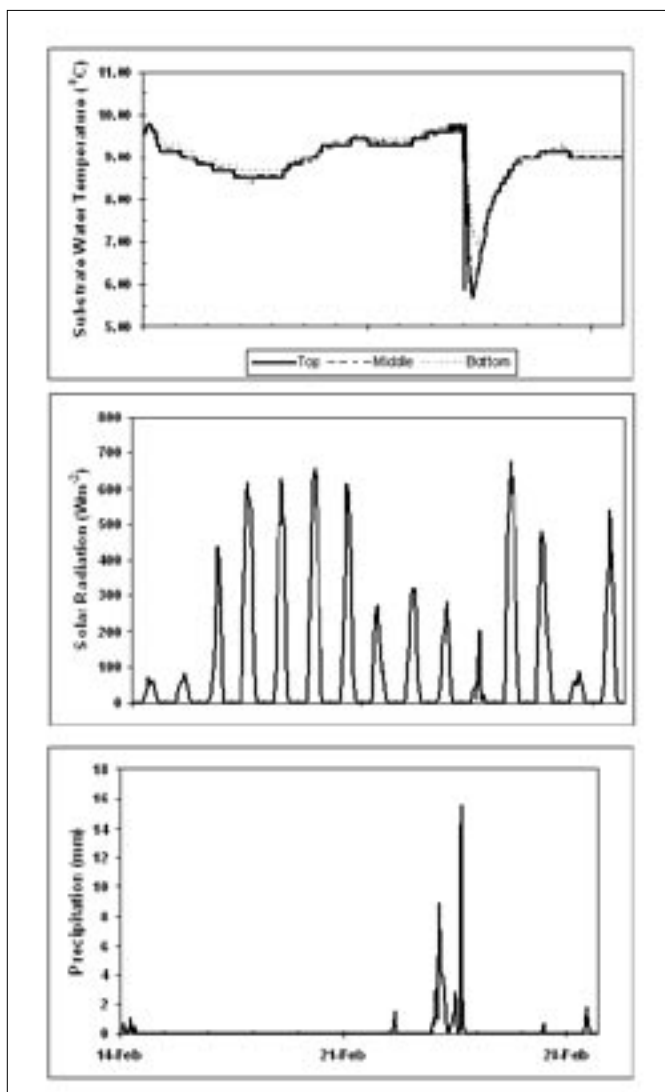


Figure 6. Variations in substrate water temperature at station 1 in the Karst Window for the period February 14-28, 2001. Solar radiation (b) and precipitation (c) are also shown.

What are the roles of annual, seasonal, and diurnal temperature variation in regulating stream and substrate water temperature?

Stream and substrate temperatures correlate well with annual scale variations in air temperature (Figure 4). Ultimately, air temperature, which explains much of the variation in stream and substrate temperatures, is regulated by the complex interactions of short- and long-term meteorological conditions and seasonal characteristics. Annual temperature trends are a function of meteorological parameters such as solar radiation, sun angle, day length, humidity, evapotranspiration, and dominant air masses, all of which vary regularly with the seasons. For example, during the summer months, solar radiation is more effective at heating the air and stream water. These effects combine with warmer seasonal temperatures to increase the diurnal water temperature range, particularly during baseflow conditions.

How does variation in discharge related to storm-induced flood events affect stream water and substrate water temperature?

Storm-induced discharges typically inundate the hydrologic system with a large volume of thermally-unequilibrated water. This overcomes the thermal buffering capacity of the stream substrates and leads to increased homogenization of temperatures vertically and longitudinally in the stream and sediment. Thus, storm-induced thermal pulses are not significantly reduced within the substrate, but the rate of temperature change is relatively gradual (0.25-0.5°C/day) and the variation is spread out over several days.

ACKNOWLEDGEMENTS

Funding for this work was provided by the National Science Foundation (A POWRE award to Carol M. Wicks), Sigma Xi (Toby J. Dogwiler), and the Cave Research Foundation (Toby J. Dogwiler). The authors would like to thank Robert Lerch of the USDA Agricultural Experiment Station for stage data from the Karst Window.

REFERENCES

- Deike G., Hopson H., Sturmfels G., Deike R., Barnholtz S. & Lang K., 1960 - *Devils Icebox, Boone County, Missouri*. Chouteau Grotto of the National Speleological Society, Columbia, MO, 1960.
- Halihan T., Wicks C.M. & Engeln J.F., 1998 - *Physical response of a karst drainage basin to flood pulses; example of the Devil's Icebox cave system (Missouri, USA)*. Journal of Hydrology, **204 (1-4)**: 24-36.
- Lerch R.N., Erickson J.M. & Wicks C.M., 2001 - *Intensive water quality monitoring in two karst watersheds of Boone County, Missouri*. In: Strong, T. (Editor), *Proceedings of the 15th National Cave and Karst Management Symposium (October 16-19, 2001)*, National Cave and Karst Management Symposium Steering Committee, Tuscon, AZ.
- Lismonde B., 2002 - *Climatologie du monde souterrain, Tome 2, Aérologie des systèmes karstiques*, Comite Départemental de Spéléologie de l'Isère.
- Lutgens F.K. & Tarbuck E.J., 1995 - *The Atmosphere: An Introduction to Meteorology*, Prentice-Hall, Inc., Englewood Cliffs, New Jersey
- St. Ivany G., 1988 - *Geologic and hydrologic characteristics of the Gans, Bonne Femme, and Clear Creek watersheds and the Pierpont Karst Plain near Rock Bridge Memorial State Park, Boone County, Missouri*, Missouri Department of Natural Resources, Division of Geology and Land Survey, Jefferson City, MO.
- White D.S., Elzinga C. H., Hendricks S.P., 1987 - *Temperature patterns within the hyporheic zone of a northern Michigan river*, Journal of the North American Benthological Society, **6(2)**: 85-91.
- Wicks C.M., 1997 - *Origins of groundwater in a fluviokarst basin; Bonne Femme Basin in central Missouri, USA*. Hydrogeology Journal, **5 (3)**: 89-96.
- Wicks C.M. & Engeln J.F., 1997 - *Geochemical evolution of a karst stream in Devils Icebox Cave, Missouri, USA*. Journal of Hydrology, **198 (1-4)**: 30-41.