

6-2013

Evidence for Reactive Reduced Phosphorus Species in the Early Archean Ocean

Matthew A. Pasek

University of South Florida, mpasek@usf.edu

Jelte P. Hammeijer

University of Washington

Roger Buick

University of Washington

Maheen Gull

University of South Florida

Zachary D. Atlas

University of South Florida, zatlas@usf.edu

Follow this and additional works at: https://scholarcommons.usf.edu/geo_facpub

Part of the [Earth Sciences Commons](#)

Scholar Commons Citation

Pasek, Matthew A.; Hammeijer, Jelte P.; Buick, Roger; Gull, Maheen; and Atlas, Zachary D., "Evidence for Reactive Reduced Phosphorus Species in the Early Archean Ocean" (2013). *School of Geosciences Faculty and Staff Publications*. 951.
https://scholarcommons.usf.edu/geo_facpub/951

This Article is brought to you for free and open access by the School of Geosciences at Scholar Commons. It has been accepted for inclusion in School of Geosciences Faculty and Staff Publications by an authorized administrator of Scholar Commons. For more information, please contact scholarcommons@usf.edu.

Evidence for reactive reduced phosphorus species in the early Archean ocean

Matthew A. Pasek^{a,1}, Jelte P. Harnmeijer^{b,c}, Roger Buick^b, Maheen Gull^a, and Zachary Atlas^a

^aDepartment of Geology, University of South Florida, Tampa, FL 33620; ^bDepartment of Earth and Space Sciences and Astrobiology Program, University of Washington, Seattle, WA 98195-1310; and ^cSustainable Community Energy Network, Edinburgh Centre for Carbon Innovation, Edinburgh EH8 9AA, Scotland

Edited by Donald E. Canfield, University of Southern Denmark, Odense M., Denmark, and approved May 10, 2013 (received for review March 1, 2013)

It has been hypothesized that before the emergence of modern DNA–RNA–protein life, biology evolved from an “RNA world.” However, synthesizing RNA and other organophosphates under plausible early Earth conditions has proved difficult, with the incorporation of phosphorus (P) causing a particular problem because phosphate, where most environmental P resides, is relatively insoluble and unreactive. Recently, it has been proposed that during the Hadean–Archean heavy bombardment by extraterrestrial impactors, meteorites would have provided reactive P in the form of the iron–nickel phosphide mineral schreibersite. This reacts in water, releasing soluble and reactive reduced P species, such as phosphite, that could then be readily incorporated into prebiotic molecules. Here, we report the occurrence of phosphite in early Archean marine carbonates at levels indicating that this was an abundant dissolved species in the ocean before 3.5 Ga. Additionally, we show that schreibersite readily reacts with an aqueous solution of glycerol to generate phosphite and the membrane biomolecule glycerol–phosphate under mild thermal conditions, with this synthesis using a mineral source of P. Phosphite derived from schreibersite was, hence, a plausible reagent in the prebiotic synthesis of phosphorylated biomolecules and was also present on the early Earth in quantities large enough to have affected the redox state of P in the ocean. Phosphorylated biomolecules like RNA may, thus, have first formed from the reaction of reduced P species with the prebiotic organic milieu on the early Earth.

origin of life | prebiotic chemistry | phosphorylation | astrobiology | exobiology

Phosphorus (P) is the limiting nutrient in many ecosystems; its scarcity is linked to the insoluble nature of phosphate minerals (1, 2). Phosphorus species may have been important reagents during prebiotic chemical evolution, but their presumed low abundance has presented a problem in understanding the origin of key phosphorylated biomolecules, such as RNA (3, 4). This was recognized early in the study of prebiotic chemistry, and a possible role for more reduced P compounds was suggested because these are more soluble than phosphate (5, 6). However, no potential source of reduced P was known at the time, leaving phosphate as the only available P species under typical geochemical conditions (7).

Phosphide minerals such as schreibersite (Fe,Ni)₃P are ubiquitous minor constituents of meteorites (8) and are potential sources of reduced P (9–12). Schreibersite reacts with water to release P compounds that are reduced relative to the geologically abundant P⁵⁺ phase phosphate PO₄³⁻, including P³⁺ phosphite HPO₃²⁻ and P¹⁺ hypophosphite H₂PO₂⁻ (9–14). Both of these compounds are significantly more soluble than phosphate in waters of neutral pH and rich in the divalent cations Ca²⁺ and Mg²⁺, such as modern seawater (5). Schreibersite reaction rates indicate complete phosphide dissolution when submerged in water over about 10 y (12), implying rapid reaction with water after meteoritic impact into an ocean. The phosphite, thus, released could have supplied a major portion of the dissolved P in the Earth's early oceans. This meteoritic signature should have been trapped during marine carbonate precipitation. Such a carbonate might preserve

the phosphite through metamorphism if it also contained ferrous iron minerals such as magnetite Fe₃O₄, which buffer phosphite oxidation up to or beyond greenschist facies conditions. The oxidation rate of calcium phosphite is such that a rock at the magnetite–hematite oxygen fugacity buffer would preserve phosphite indefinitely even if moderately metamorphosed (details on these calculations are in *Methods*).

Other natural sources of phosphite include lightning strikes (15, 16), geothermal fluids (14, 17), and possibly microbial activity under extremely anaerobic conditions (14, 18). No other terrestrial sources of phosphite have been identified, because few geological processes are so reducing as to promote reduction of phosphate to phosphite and because under oxidizing conditions, phosphite readily converts to orthophosphate. Hence, the presence of phosphite in a rock likely has a meteoritic origin if lightning and geothermal sources can be eliminated. If phosphite is a constituent of subsurface samples from below the water table, a modern lightning origin is precluded (16). Phosphite from geothermal sources has been detected at a single terrestrial spring thus far and the amount of phosphite in this environment is minimal (0.06 μM) (17), suggesting little net impact to the oceanic P budget even if this source were more widespread.

Samples and Site Geology

A suite of 17 Archean and Phanerozoic sedimentary rocks (Table 1) was analyzed for P speciation, using 35 mM KOH as an eluent and then high-performance liquid chromatography (HPLC) using an AC-17 ion-chromatography (IC) column coupled to an inductively coupled plasma (ICP) mass spectrometer [HPLC (IC)-ICP-MS], following prior methods (14, 17). With the exception of the Coonterunah rocks, these samples were acquired during field work that was not associated with the present study but were chosen to span a range of times, locations, and lithologies.

The Coonterunah rocks come from the ~6.5-km-thick, 3.518 Ga (19) Coonterunah Subgroup in the East Strelley Belt, the oldest supracrustal rocks in the Pilbara Craton of northwest Australia (Figs. 1 and 2). A regional unconformity to the south bounds the Coonterunah rocks from the overlying shallow marine sediments of the ~3.35-Ga (20) Strelley Pool Formation (Fm.), whereas a regional intrusive contact with the ~3.48-Ga (19) Carlindi Granitoid complex bounds outcrop to the north. Estimated local metamorphic conditions were in the lower greenschist facies, at temperatures between ~350–400 °C, pressures of ~1–2 kbar (21).

The carbonate samples were collected from the middle of the Coucal Fm., which lies conformably between ±2 km of

Author contributions: M.A.P. designed research; M.A.P., J.P.H., R.B., and M.G. performed research; M.A.P. and Z.A. contributed new reagents/analytic tools; M.A.P., J.P.H., R.B., M.G., and Z.A. analyzed data; and M.A.P., J.P.H., and R.B. wrote the paper.

The authors declare no conflict of interest.

This article is a PNAS Direct Submission.

Freely available online through the PNAS open access option.

¹To whom correspondence should be addressed. E-mail: mpasek@usf.edu.

This article contains supporting information online at www.pnas.org/lookup/suppl/doi:10.1073/pnas.1303904110/-DCSupplemental.

Table 1. Rocks examined in this study

Rock locality	Rock type	Age, Ma
Coucal Fm., Coonterunah, Australia	Limestone (two sample sites)	3,520
Coucal Fm., Coonterunah, Australia	Hydrothermal chert	3,520
Coucal Fm., Coonterunah, Australia	Limestone (six core samples)	3,520
Strelley Pool Fm., Kelley Group, Australia	Chert	3,400
Goldman Meadows Fm., South Pass, WY	Banded Iron Fm.	2,870
Cheshire Fm., Belingwe, Zimbabwe	Carbonate	2,700
Brockman Iron Fm., Hamersley Basin, Australia	Banded Iron Fm.	2,500
Millboro Fm., Charles Town, WV	Shale	400–380
Green River Fm., Kemmerer, WY	Shale	50
Avon Park Fm., Citrus County, FL	Limestone	35

sporadically pillowed basalt, gabbro and rare komatiites of the underlying Table Top Fm., and >2 km of pillowed tholeiitic basalt and lesser gabbros of the overlying Double Bar Fm. The most prominent and best-preserved carbonate horizon is 32 cm thick, with a lateral extent of at least 5 km (Fig. 3). Texturally similar but thinner 1- to 5-cm units also crop out. The prominent carbonate lies conformably within a ~35-m-thick package of graded tuffaceous wackes to siltstones and chlorite–biotite–quartz metapelites, the base of which is marked by a silicified

hyaloclastite. About 60 m of dolerite immediately overlies the mixed volcanoclastic-carbonate sequence, capped by an ~8-m-thick magnetitic metachert. Associated basalts bear only rare amygdales, whereas hydrovolcanic tuff, coarse pumice, and accretionary lapilli are absent from adjacent volcanoclastic units. No coarse (more than clay size) terrigenous clastic sediments or large-scale cross-bedding are present. These igneous and sedimentary textures together indicate a low-energy depositional setting at water depths well below wave base.

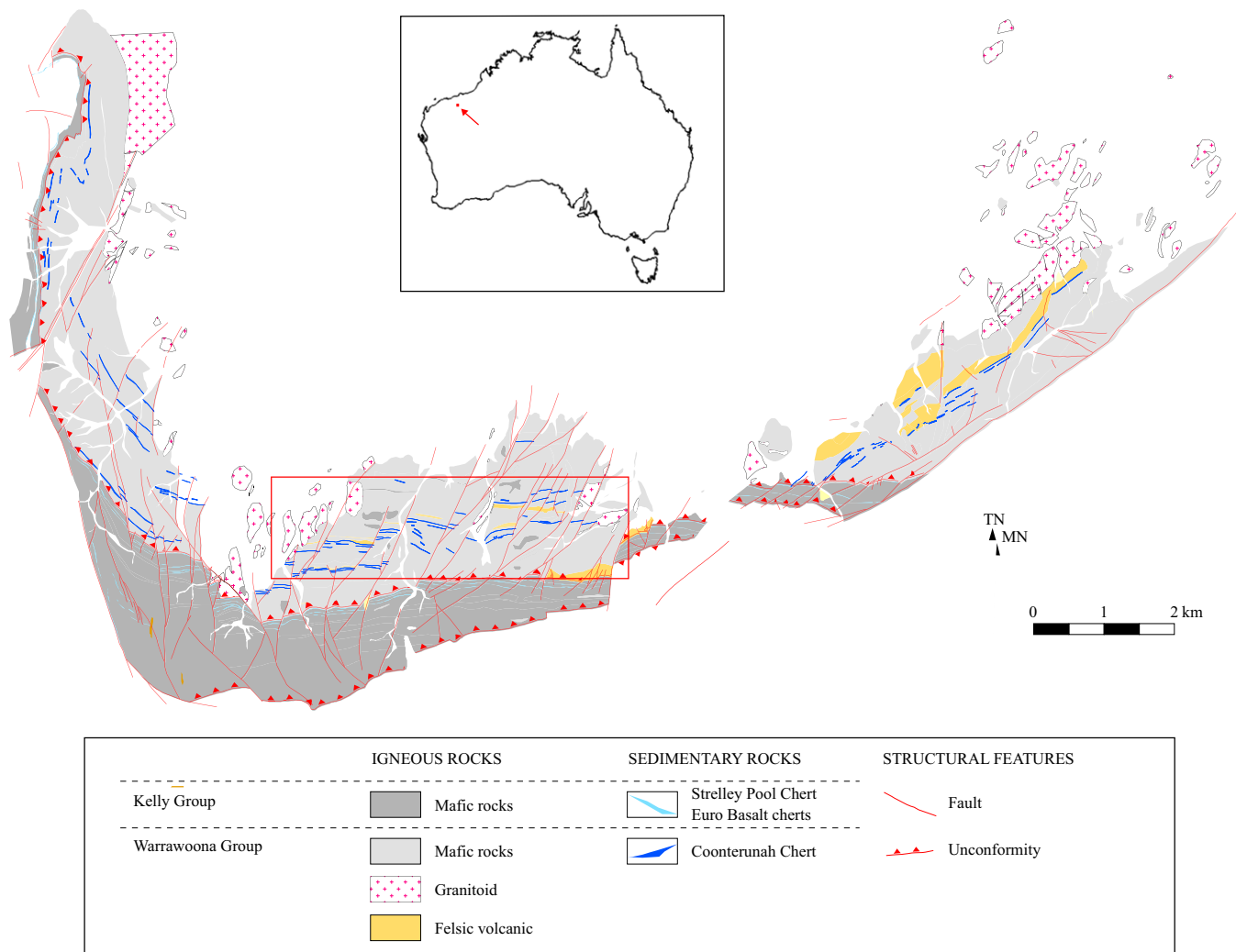


Fig. 1. Geological map of the East Strelley Belt, with regional location shown (*Inset*). The box shows outline of the study area.

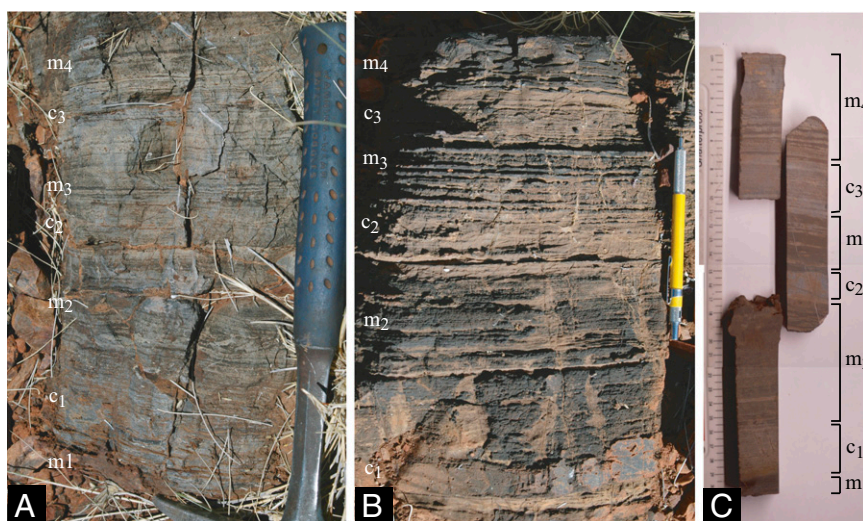


Fig. 3. Outcrop photographs of Coonterunah carbonate, with magnetitic (m_1 to m_4) and carbonate (c_1 to c_3) mesobands labeled. (A) Calcitic phase: alternating calcite and magnetite laminae. (B) Dolomitic phase: alternating dolomite/calcite and magnetite laminae. The c_1 mesoband is partially silicified. (C) Slabs through dolomitic phase.

from the same formation, including a magnetite-bearing chert, nor in any of the younger rocks. These results indicate that the phosphite was not introduced by diagenetic processes occurring after deposition and instead records P speciation in the ocean at ~ 3.52 Ga. The high relative proportion of phosphite in these rocks indicates that it was a significant dissolved P species in the seawater, where the carbonate formed, in contrast to modern oceans, where phosphate is overwhelmingly dominant everywhere.

Discussion

Relevance to Bombardment History. If the Archean carbonates are representative of early Archean ocean chemistry, as might be reasonable given their deep sea setting, then these carbonates provide constraints on the bombardment history of the early Earth.

Phosphides are the major P mineral in enstatite chondrites, which have recently been proposed as the source of heavy bombardment impactors (22). Corrosion of the meteoritic phosphite mineral schreibersite likely provided the phosphite detected in the present study, because few other sources of phosphite are known, and none was as widespread and voluminous as meteoritic bombardment early in Earth's history (23). It is possible that ancient lightning strikes on Archean land surfaces could, in the absence of an oxidizing atmosphere, have provided a terrestrial fluvial flux of phosphite to the oceans via weathering of fulgurites. However, neither of our other Archean samples (Strelley Pool Fm., Goldman Meadows Fm.) dating from before the earliest evidence of oxidative weathering at ~ 2.8 Ga (24) contain phosphite, indicating that any such flux was negligible and that a meteoritic source for the Coonterunah phosphite is most likely. Similarly, a significant hydrothermal phosphite source should have led to its occurrence in other Archean samples.

Phosphite and phosphate differ in solubility by a factor of about 1,000 (5, 6). If it is assumed that the phosphite to phosphate ratio has been minimally altered since deposition and is representative of the Archean ocean, then the amount of meteoritic material required to provide this quantity of phosphite to the early Earth oceans is about 10^{19} – 10^{20} kg, assuming an ocean volume equivalent to present day and that the average meteorite is composed of 0.1% reduced P in phosphite minerals by weight (8). This quantity is about 1% of the mass of the Earth's crust and is comparable to other estimates of total meteorite fluxes at the time (25–27). Obviously, if other natural sources of phosphite can be identified, such as widespread production in hydrothermal systems (17), then the total meteoritic mass necessary to provide this phosphite may be reduced. More work on reduced P sources will be necessary to determine the exact contribution of separate sources of reduced P to the early Earth.

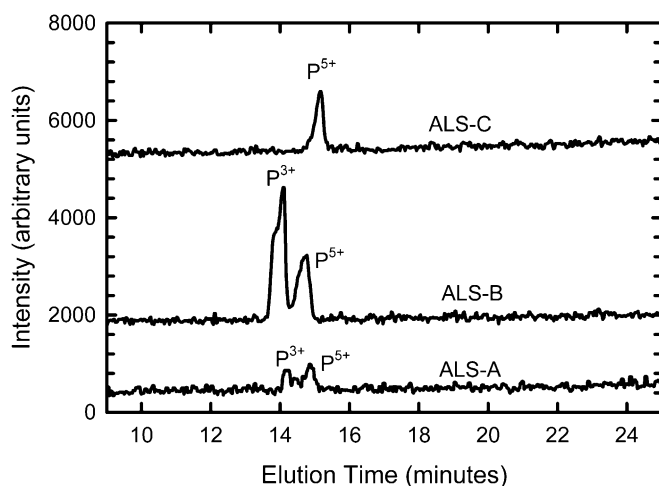


Fig. 4. Chromatogram showing P speciation of two samples of the Coonterunah carbonate (ALS-A and ALS-B) and of a hydrothermal control sample (ALS-C). P^{3+} is phosphite. No P species appeared within the 18.2 M Ω deionized water blank, and only phosphate (P^{5+}) appeared in extracts of the other rocks listed in Table 1. These peaks correspond to concentration ratios (P^{3+}/P total) of 40% (ALS-A) and 67% (ALS-B). Slight shifts in peak locations are attributable to peak wander as experiments run and are constrained by comparison with standards every five samples.

Relevance to Prebiotic Chemistry. Phosphorus is an essential constituent in biochemical molecules such as DNA, RNA, and ATP. P may have been equally important during the evolution of life on the early Earth, including the prebiotic chemistry (28, 29) that led to the hypothesized RNA world precursor of the modern DNA–RNA–protein world (3). However, the limited availability of phosphate as a solute in water coupled to its low reactivity has led some to conclude that there was little P in the earliest biomolecules (1), with replacement of phosphate by glyoxylate (30)

or peptides (31) in early replicating molecules. In contrast to calcium phosphate minerals, schreibersite is more reactive and, hence, may have provided soluble P species like phosphite necessary for the formation of organophosphates during the origin of life (9, 13).

Although aqueously corroding schreibersite has shown some reactivity toward organic compounds in previous experiments (11), it has not previously shown a significant capacity for phosphorylation. Here, we show that heating glycerol and schreibersite in water under anaerobic conditions at 65 °C produces, along with phosphite, glycerol-phosphate in 2.5% yield (Fig. 5). Glycerol is a three-carbon sugar alcohol that is one of the most common organic compounds in the Murchison meteorite (32); hence, this reaction may be similar to those that were active on the early Earth, suggesting some glycerol-phosphate may have participated in prebiotic chemistry.

In contrast to other experiments, this phosphorylation takes place at lower temperatures, uses a mineral source for P, occurs in water, and uses no condensing agent (1). This shows that phosphorylation can take place in a chemical system that was plausibly present on the prebiotic Earth. Although the mineral struvite has been used as a phosphorylating agent in a similar fashion (33), the evidence for this mineral being present on the early Earth is unconvincing (34). Glycerol-phosphate is a major constituent of cellular membranes, bonding with two fatty acids to make phospholipids, and is also involved in the glycerol-phosphate shuttle for transporting reducing equivalents.

Production of potential monomeric precursors to RNA involves a phosphorylation step to phosphorylate the various RNA nucleobases (29, 35). Attempts to perform this reaction using inorganic phosphate have only been successful in the presence of heat, urea, and/or formamide (36, 37). However, conceptual models of prebiotic RNA synthesis have also invoked phosphite as an important phosphorylating reagent (38). If this proves to be a worthwhile synthetic pathway, then phosphorylation by seawater phosphite potentially presents a realistic mechanism for producing prebiotic molecules for information storage, enzymatic

catalysis, electron transport, and cellular segregation during the Hadean–Archean meteoritic bombardment.

Conclusion

Many approaches to prebiotic chemistry have relied on model systems without an adequate grounding in the contemporaneous geological environment (39). In large part, this is attributable to an inability to sample geological material from near the time when life is believed to have originated. Moreover, amino acids, sugars, nucleobases, and other potential prebiotic reagents rapidly degrade at the high temperatures of metamorphism, whereas P chemistry is exceptional in that it might preserve some of the unique characteristics of the early Earth that led to the development of life. If the source of the Archean phosphite reported here was indeed meteoritic schreibersite, then the conditions of the early Earth differed substantially from the modern environment, providing prebiotic reagents not readily available subsequently. Our research demonstrates the availability of reduced P species as a source of soluble reactive P on the early Earth, enabling the abiotic formation of primitive phosphorylated biomolecules such as proto-nucleic acids and lipids, thus providing a pathway to the “RNA World” and subsequent origin of life reactions.

Methods

Oxidation Rate Determination. The oxidation rate of CaHPO_3 was investigated by a series of thermal-heating experiments performed under air. CaHPO_3 was synthesized by the addition of equimolar amounts of $\text{Ca}(\text{OH})_2$ and H_3PO_3 to water, and the white precipitate was separated and analyzed by ^{31}P NMR and was shown to be CaHPO_3 hydrate. A set of 0.1-g samples of this white powder was placed in an alumina crucible and then exposed to temperatures ranging from 400, 425, 450, 475, and 500 °C in an open-air oven. Portions (about 0.01 g) of each powder were taken daily from these heating experiments and were analyzed by ^{31}P NMR to determine the ratio of P in phosphite to the oxidized species phosphate and pyrophosphate, as determined by peak integration. From these data, the oxidation rates were determined at each temperature and were pseudo-first-order reactions. These data provided an Arrhenius relationship from which the activation energy could be derived (Fig. S1).

HPLC(IC)-ICP-MS Methods. Approximately 1 g of powders of each rock was extracted with 10 mL of a solution of Na_2EDTA (0.025 M) or 0.5 M sodium acetate. These extracts were filtered through 0.45- μm in-line filters to remove large solids. The solutions were then analyzed by a Perkin-Elmer S-200 HPLC fitted with an IonPac AS17-C IC column. Total P was measured on the attached, in-line Perkin-Elmer Elan dynamic reaction cell (DRC) II ICP-MS. Initial trials were conducted in both standard and DRC mode for P at mass 31 and phosphorus oxide at mass 47 for phosphite, hypophosphite, and phosphate standards at concentrations ranging from 10^{-7} to 10^{-3} M. It was determined that 50- μL injections of P-bearing solution analyzed at a mass/charge of 31 with a dwell time of 250 ms was sufficient to resolve differences in P species concentration down to $\sim 10^{-6}$ M. Speciation runs were performed as a gradient with 3.5 mM KOH used as a mobile phase for the first 2 min and then increasing linearly to 35 mM over the course of 10 min. Mobile phase was held at 35 mM for 10 additional minutes. All pump rates were 1.5 mL/min.

Species Determination. Phosphorus speciation within rock samples was determined by comparison with a standard solution consisting of sodium phosphate, sodium phosphite, and sodium hypophosphite prepared at 1 mM in 18.2 M Ω deionized water prepared in house on a Barnstead water-purification system. A series of solutions were made from this initial stock to a final concentration of 10^{-7} M. Two other compounds that were not studied in the current work are hypophosphate ($\text{P}_2\text{O}_6^{4-}$) and pyrophosphate ($\text{P}_2\text{O}_7^{4-}$). In prior work, these compounds always elute after phosphate (14).

Extracts performed with Na_2EDTA also show the presence of phosphite in the Coonterunah rock (Fig. S2) compared with a Na_2EDTA solution mixed with the standard solution (10^{-6} M). This method separates P species within carbonate rocks; however, the signal-to-noise ratio was weaker for these materials compared with sodium acetate extracts, likely because of overlap with ^{15}N -O or N - ^{17}O introduced by the EDTA. Extracts done with EDTA eluted faster than those with sodium acetate.

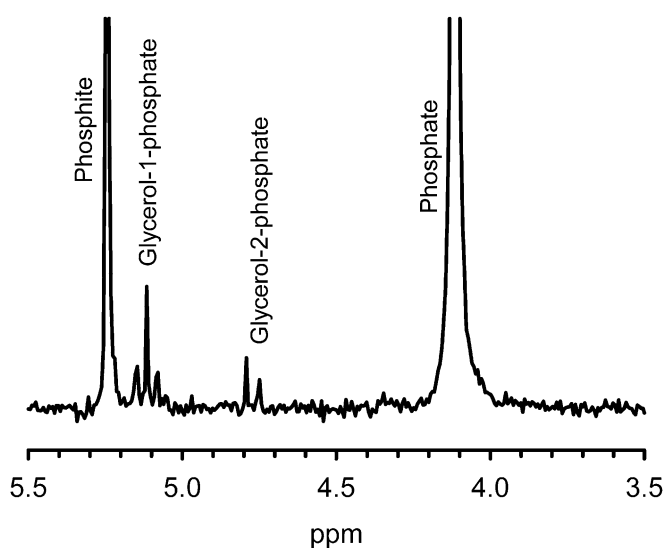


Fig. 5. ^{31}P NMR spectrum of schreibersite added to a 0.5 M aqueous solution of glycerol at neutral pH and heated to 65 °C under argon. The spectrum was acquired fully coupled to hydrogen. The peaks are identified by comparison with a glycerol phosphate standard and by their J-coupling constants. The triplet results from $\text{CH}_2\text{-O-P}$ on the terminal end of glycerol, and the doublet results from a CH-O-P interaction on the second carbon of glycerol. The presence of glycerol phosphate is also confirmed by mass spectrometry, with a peak at 171 m/z in negative ion mode.

The solutions made from extracts of the Coonterunah rocks were spiked with sodium phosphite for a molarity of 10^{-5} M solution of phosphite. Chromatograms of the resulting solution show an increase in the peak identified as phosphite (Fig. S3).

Reaction of Schreibersite with Glycerol. Twenty-five milliliters of a 0.2 M solution of glycerol ($C_3H_8O_3$) were added to 1 g of synthetic Fe_3P powder (confirmed to be the iron analog of schreibersite by its X-ray diffractometry pattern, magnetic properties, and density). Iron sulfide (FeS) was also added to this mixture; this compound is commonly associated with schreibersite in meteorites. The solution was stirred constantly in a closed container at 65 °C for 2 d. A solution of sodium sulfide was added to the reacted material to quench the

reaction (40), and the sample was filtered and centrifuged. The sample was then evaporated to dryness at 20 °C and subsequently mixed with D_2O and water to give a 50% D_2O :50% (vol/vol) water solution. The sample was analyzed on a 400-MHz Varian UnityNova NMR operating at 161.9 MHz in both H-coupled and H-decoupled modes, and by MS on a LC-MSD Agilent mass spectrometer in negative mode.

ACKNOWLEDGMENTS. Drill-core samples were obtained from the Agouon Institute Drilling Program. This work was supported jointly by the National Science Foundation (NSF) and the National Aeronautics and Space Administration (NASA) Astrobiology Program, under the NSF Center for Chemical Evolution (Grant CHE-1004570), and by the NASA Exobiology and Evolutionary Biology Program (Grant NNX10AT30G).

1. Keefe AD, Miller SL (1995) Are polyphosphates or phosphate esters prebiotic reagents? *J Mol Evol* 41(6):693–702.
2. Oelkers EH, Valsami-Jones E (2008) Phosphate mineral reactivity and global sustainability. *Elements* 4(2):83–87.
3. Gilbert W (1986) Origins of life: The RNA World. *Nature* 319(6055):618.
4. Joyce GF (2002) The antiquity of RNA-based evolution. *Nature* 418(6894):214–221.
5. Gulick A (1955) Phosphorus as a factor in the origin of life. *Am Sci* 43(3):479–489.
6. Schwartz AW (2006) Phosphorus in prebiotic chemistry. *Philos Trans R Soc Lond B Biol Sci* 361(1474):1743–1749, discussion 1749.
7. Miller SL, Urey HC (1959) Organic compound synthesis on the primitive earth. *Science* 130(3370):245–251.
8. Pasek MA, Lauretta DS (2008) Extraterrestrial flux of potentially prebiotic C, N, and P to the early Earth. *Orig Life Evol Biosph* 38(1):5–21.
9. Pasek MA, Lauretta DS (2005) Aqueous corrosion of phosphide minerals from iron meteorites: A highly reactive source of prebiotic phosphorus on the surface of the early Earth. *Astrobiology* 5(4):515–535.
10. Bryant DE, Kee TP (2006) Direct evidence for the availability of reactive, water soluble phosphorus on the early Earth. H-phosphinic acid from the Nantan meteorite. *Chem Commun (Camb)* 2006(22):2344–2346.
11. Pasek MA, Dworkin JP, Lauretta DS (2007) A radical pathway for organic phosphorylation during schreibersite corrosion with implications for the origin of life. *Geochim Cosmochim Acta* 71(7):1721–1736.
12. Bryant DE, et al. (2009) Electrochemical studies of iron meteorites. Phosphorus redox chemistry on the early Earth. *Int J Astrobiol* 8(1):27–36.
13. Pasek MA (2008) Rethinking early Earth phosphorus geochemistry. *Proc Natl Acad Sci USA* 105(3):853–858.
14. Pech H, et al. (2011) Elucidating the redox cycle of environmental phosphorus using ion chromatography. *J Chromatogr Sci* 49(8):573–581.
15. Essene EJ, Fisher DC (1986) Lightning strike fusion: Extreme reduction and metal-silicate liquid immiscibility. *Science* 234(4773):189–193.
16. Pasek MA, Block K (2009) Lightning-induced reduction of phosphorus oxidation state. *Nat Geosci* 2(8):553–556.
17. Pech H, et al. (2009) Detection of geothermal phosphite using high-performance liquid chromatography. *Environ Sci Technol* 43(20):7671–7675.
18. Han C, et al. (2012) Determination of phosphite in a eutrophic freshwater lake by suppressed conductivity ion chromatography. *Environ Sci Technol* 46(19):10667–10674.
19. Buick R, et al. (1995) Record of emergent continental crust ~3.5 billion years ago in the Pilbara Craton of Australia. *Nature* 375(6532):574–577.
20. Banerjee DM, et al. (2007) Direct dating of Archean microfossil ichnofossils. *Geology* 35(6):487–490.
21. Harnmeijer JP (2010) Squeezing Blood from a Stone: Inference into the Life and Depositional Environments. Ph.D. Thesis (University of Washington, Seattle).
22. Bottke WF, et al. (2012) An Archean heavy bombardment from a destabilized extension of the asteroid belt. *Nature* 485(7396):78–81.
23. Johnson BC, Melosh HJ (2012) Impact spherules as a record of an ancient heavy bombardment of Earth. *Nature* 485(7396):75–77.
24. Stüeken EE, Catling DC, Buick R (2012) Contributions to late Archean sulphur cycling by life on land. *Nat Geosci* 5(10):722–725.
25. Abramov O, Mojzsis SJ (2009) Microbial habitability of the Hadean Earth during the late heavy bombardment. *Nature* 459(7245):419–422.
26. Hartmann WK, Ryder G, Dones L, Grinspoon D (2000) in *Origin of the Earth and Moon*, eds Canup R, Righter K (Univ of Arizona Press, Tucson, AZ), pp 493–512.
27. Ryder G, Koeberl C, Mojzsis SJ (2000) in *Origin of the Earth and Moon*, eds Canup R, Righter K (Univ of Arizona Press, Tucson, AZ), pp 475–492.
28. Powner MW, Gerland B, Sutherland JD (2009) Synthesis of activated pyrimidine ribonucleotides in prebiotically plausible conditions. *Nature* 459(7244):239–242.
29. Sutherland JD, Whitfield JN (1997) Synthesis of potentially prebiotic RNA precursors: Cytosine and guanine derivatives. *Tetrahedron Lett* 38(8):1451–1454.
30. Bean HD, Anet FAL, Gould IR, Hud NV (2006) Glyoxylate as a backbone linkage for a prebiotic ancestor of RNA. *Orig Life Evol Biosph* 36(1):39–63.
31. Nelson KE, Levy M, Miller SL (2000) Peptide nucleic acids rather than RNA may have been the first genetic molecule. *Proc Natl Acad Sci USA* 97(8):3868–3871.
32. Cooper G, et al. (2001) Carbonaceous meteorites as a source of sugar-related organic compounds for the early Earth. *Nature* 414(6866):879–883.
33. Handschuh GJ, Orgel LE (1973) Struvite and prebiotic phosphorylation. *Science* 179(4072):483–484.
34. Hazen RM, et al. (2008) Mineral evolution. *Am Min* 93(11–12):1693–1720.
35. Sutherland JD, Whitfield JN (1997) Studies on a potentially prebiotic synthesis of RNA. *Tetrahedron* 53(34):11595–11626.
36. Lohrmann R, Orgel LE (1971) Urea-inorganic phosphate mixtures as prebiotic phosphorylating agents. *Science* 171(3970):490–494.
37. Schoffstall AM (1976) Prebiotic phosphorylation of nucleosides in formamide. *Orig Life* 7(4):399–412.
38. Benner SA, Kim H-J, Carrigan MA (2012) Asphalt, water, and the prebiotic synthesis of ribose, ribonucleosides, and RNA. *Acc Chem Res* 45(12):2025–2034.
39. Shapiro R (1986) *A Skeptic's Guide to the Creation of Life on the Earth* (SummitBooks, New York), pp. 1–332.
40. Pasek MA, Kee TP, Bryant DE, Pavlov AA, Lunine JI (2008) Production of potentially prebiotic condensed phosphates by phosphorus redox chemistry. *Angew Chem Int Ed Engl* 47(41):7918–7920.