
USF Patents

11-7-2017

Method of treatment of cancer using guanosine 3', 5' cyclic monophosphate (cyclic GMP)

David L. Vesely

Follow this and additional works at: https://digitalcommons.usf.edu/usf_patents

Recommended Citation

Vesely, David L., "Method of treatment of cancer using guanosine 3', 5' cyclic monophosphate (cyclic GMP)" (2017). *USF Patents*. 934.
https://digitalcommons.usf.edu/usf_patents/934

This Patent is brought to you for free and open access by Digital Commons @ University of South Florida. It has been accepted for inclusion in USF Patents by an authorized administrator of Digital Commons @ University of South Florida. For more information, please contact digitalcommons@usf.edu.



US009808513B2

(12) **United States Patent**
Vesely

(10) **Patent No.:** **US 9,808,513 B2**

(45) **Date of Patent:** ***Nov. 7, 2017**

(54) **METHOD OF TREATMENT OF CANCER
USING GUANOSINE 3', 5' CYCLIC
MONOPHOSPHATE (CYCLIC GMP)**

(71) Applicant: **David L. Vesely**, Tampa, FL (US)

(72) Inventor: **David L. Vesely**, Tampa, FL (US)

(73) Assignee: **UNIVERSITY OF SOUTH
FLORIDA**, Tampa, FL (US)

(*) Notice: Subject to any disclaimer, the term of this patent is extended or adjusted under 35 U.S.C. 154(b) by 0 days.

This patent is subject to a terminal disclaimer.

(21) Appl. No.: **14/310,258**

(22) Filed: **Jun. 20, 2014**

(65) **Prior Publication Data**

US 2015/0018276 A1 Jan. 15, 2015

Related U.S. Application Data

(63) Continuation of application No. 11/162,056, filed on Aug. 26, 2005, now Pat. No. 8,759,317, which is a continuation-in-part of application No. 10/708,688, filed on Mar. 18, 2004, now Pat. No. 6,943,147.

(60) Provisional application No. 60/522,178, filed on Aug. 26, 2004.

(51) **Int. Cl.**

A61K 38/22 (2006.01)

C07K 14/58 (2006.01)

A61K 31/708 (2006.01)

A61K 45/06 (2006.01)

A61K 31/7076 (2006.01)

(52) **U.S. Cl.**

CPC **A61K 38/2242** (2013.01); **A61K 31/708** (2013.01); **A61K 31/7076** (2013.01); **A61K 38/22** (2013.01); **A61K 45/06** (2013.01); **C07K 14/58** (2013.01); **Y10S 930/05** (2013.01)

(58) **Field of Classification Search**

None

See application file for complete search history.

(56) **References Cited**

U.S. PATENT DOCUMENTS

4,753,945 A	6/1988	Gilbard et al.	
5,352,770 A	10/1994	Matsuo	
5,625,056 A *	4/1997	Genieser	C07H 19/20 536/26.12
5,858,694 A	1/1999	Piazza et al.	
6,943,147 B2	9/2005	Vesely	
7,825,092 B2	11/2010	Vesely	
7,846,900 B2	12/2010	Vesely	
8,343,919 B2	1/2013	Vesely	
8,759,317 B2 *	6/2014	Vesely	A61K 31/7076 514/12.4
2002/0094326 A1	7/2002	Donahue et al.	
2003/0105000 A1	6/2003	Pero et al.	

2003/0215528 A1	11/2003	Graham et al.	
2004/0229784 A1	11/2004	Vesely	
2004/0258687 A1	12/2004	Waldman et al.	
2005/0176641 A1	8/2005	Bakis et al.	
2005/0209139 A1	9/2005	Vesely	
2006/0019256 A1	1/2006	Clarke et al.	
2009/0062206 A1 *	3/2009	Vesely	A61K 38/2242 514/1.1

FOREIGN PATENT DOCUMENTS

WO	WO-2004-083236	9/2004
WO	WO-2007-130672	11/2007

OTHER PUBLICATIONS

Vesely et al. (Euro. J. Clin. Invest. Nov., Jan. 2005, 35:60-69).*

Ueno, M. et al. "Increased secretion of erythropoietin in human renal carcinoma cells in response to atrial natriuretic factor" *Am. J. Physiol.*, 1990, 259:C427-C431.

ATCC No. CCL-248 (T84), 1984.

Buskens C et al., "Adenocarcinomas of the gastro-esophageal junction: A comparative study of the gastric cardia and esophagus with respect to cyclooxygenase-2 expression" *Digestive Disease Week Abstracts and Itinerary Planner*, 2003, Publishing ID:850, Abstract ID:101362.

Carter SK et al., *Chemotherapy of Cancer, Second Edition*, John Wiley & Sons: New York, 1981, Appendix C, pp. 361-367.

Dermer GB, "Another Anniversary for the War on Cancer" *Bio/Technology*, 1994, 12:320.

Freshney RI, *Culture of Animal Cells: A Manual of Basic Technique*, Alan R. Liss, Inc., 1983, New York, pp. 3-4.

Gura T, "Systems for Identifying New Drugs Are Often Faulty" *Science*, 1997, 278:1041-1042.

Haneda M et al. "Differential inhibition of mesangial MAP kinase cascade by cyclic nucleotides" *Kidney International*, 1996, 50:384-391.

Kaiser J "Cancer: First Pass at Cancer Genome Reveals Complex Landscape" *Science*, 2006, 313:1370.

Krontiris TG, *Internal Medicine, 4th Edition*, Stein J, Editor-in-chief, Capizzi RL, ed., Elsevier Science, 1994, Chapters 71-72, pp. 699-729.

Kumar R et al., "Stimulation of atrial natriuretic peptide receptor / guanylyl cyclase-A signaling pathway antagonizes the activation of protein kinase C- α in murine Leydig cells" *Biochimica et Biophysica Acta*, 1997, 1356:221-228.

Linder MW et al. "Pharmacogenetics: a laboratory tool for optimizing therapeutic efficiency" *Clinical Chemistry*, 1997, 43(2):254-266.

(Continued)

Primary Examiner — Peter J Reddig

(74) *Attorney, Agent, or Firm* — Saliwanchik, Lloyd & Eisenschenk

(57) **ABSTRACT**

A method of treating cancer through use of guanosine 3',5'-cyclic monophosphate (cyclic GMP). Cyclic GMP decreases the number of human breast cancer and prostate adenocarcinoma as well as small-cell and squamous lung cells in culture by 30% (1 μ M), 84% (1 mM), 31% (1 μ M), and 30% (1 μ M), respectively. Cyclic GMP decreases DNA synthesis in human pancreatic, breast, and prostate adenocarcinomas as well as small-cell and squamous cell carcinomas of the lung at its 1 μ M concentration by 51%, 54%, 56%, 50% and 52%, respectively. Cyclic GMP when infused for one week decreases the tumor volume of human pancreatic adenocarcinomas in athymic mice 95% compared to untreated animals with human pancreatic adenocarcinomas.

23 Claims, 8 Drawing Sheets

(56)

References Cited

OTHER PUBLICATIONS

- Nguyen TD and Canada AT, "Citrus Flavonoids Stimulate Secretion by Human Colonic T₈₄ Cells" *The Journal of Nutrition*, 1993, 123:259-268.
- Pitari GM et al., "Guanylyl cyclase C agonists regulate progression through the cell cycle of human colon carcinoma cells" *PNAS*, 2001, 98(14):7846-7851.
- Schwede F et al., "Cyclic nucleotide analogs as biochemical tools and prospective drugs" *Pharmacology & Therapeutics*, 2000, 87:199-226.
- Scott DA et al., "The Pendred syndrome gene encodes a chloride-iodide transport protein" *Nature Genetics*, 1999, 21:440-443.
- Sugimoto T et al., "Atrial Natriuretic Peptide Induces the Expression of MKP-1, a Mitogen-activated Protein Kinase Phosphatase, in Glomerular Mesangial Cells" *The Journal of Biological Chemistry*, 1996, 271(1):544-547.
- Tannock IF and Hill RP, "Experimental Chemotherapy" Ch. 19, pp. 338 and 352-359 in *The Basic Science of Oncology, Second Edition*, Tannock and Hill, eds., McGraw-Hill, Inc., New York 1992.
- Tressler RJ et al., "Anti-Tumor Activity of Mycophenolate Mofetil Against Human and Mouse Tumors In Vivo" *International Journal of Cancer*, 1994, 57:568-573.
- Vesely BA et al., "Five cardiac hormones decrease the number of human small-cell lung cancer cells" *European Journal of Clinical Investigation*, 2005, 35:388-398.
- Vesely BA et al., "Four peptide hormones decrease the number of human breast adenocarcinoma cells" *European Journal of Clinical Investigation*, 2005, 35:60-69.
- Vesely BA et al., "Four peptide hormones' specific decrease (up to 97%) of human prostate carcinoma cells" *European Journal of Clinical Investigation*, 2005, 35:700-710.
- Vesely BA et al., "Four peptides decrease the number of human pancreatic adenocarcinoma cells" *European Journal of Clinical Investigation*, 2003, 33:998-1005.
- Vesely DL, "Atrial natriuretic peptides in pathophysiological disease" *Cardiovascular Research*, 2001, 51:647-658.
- Vesely DL et al., "Novel therapeutic approach for cancer using four cardiovascular hormones" *European Journal of Clinical Investigation*, 2004, 34:674-682.
- White RE et al., "Potassium channel stimulation by natriuretic peptides through cGMP-dependent dephosphorylation" *Nature*, 1993, 361:263-266.
- Wigle DA et al., "ANP secretion from small cell lung cancer cell lines: a potential model of ANP release" *American Journal of Physiology Heart and Circulatory Physiology*, 1995, 268:H1869-H1874, abstract only.
- Zellner A et al., "Disparity in expression of protein kinase C alpha in human glioma versus glioma-derived primary cell lines: therapeutic implications" *Clinical Cancer Research*, 1998, 4:1797-1802.
- Zips D et al., "New Anticancer Agents: In Vitro and In Vivo Evaluation" *In Vivo*, 2005, 19:1-8.
- Akashi et al., *Clin. Chem. Lab. Med.*, 2007, 45(10):1259-1267.
- Benjamin, B.A. et al., "Effect of proANF-(31-67) on sodium excretion in conscious monkeys", *Am J Physiol Regul Integr Comp Physiol*, 1995, pp. R1351-R1355, vol. 269, abstract.
- Bestle, M.H. and Bie, P., "Renal effects of urodilatin and atrial natriuretic peptide in volume expanded conscious dogs" *Acta Physiol. Scand.*, 1993, 149:77-83.
- Chow, W.H. et al., "Rising Incidence of Renal Cell Cancer in the United States", *JAMA*, 1999, pp. 1628-1631, vol. 281, No. 17.
- Clark, J.I. et al., "Adjuvant High-Dose Bolus Interleukin-2 for Patients With High-Risk Renal Cell Carcinoma: A Cytokine Working Group Randomized Trial", *Journal of Clinical Oncology*, Aug. 15, 2003, pp. 3133-3140, vol. 21, No. 16.
- Cohen, H.T. et al., "Renal-Cell Carcinoma", *The New England Journal of Medicine*, Dec. 8, 2005, pp. 2477-2490, vol. 353, No. 23.
- De Palo, E.F. et al., "Circulating Immunoreactive proANP(1-30) and proANP(31-67) in Sedentary Subjects and Athletes", *Clinical Chemistry*, 2000, pp. 843-847, vol. 46, No. 6.
- Dietz, J.R. et al., "Evidence supporting a physiological role for proANP—(1-30) in the regulation of renal excretion", *Am J Physiol Regul Integr Comp Physiol*, 2001, pp. R1510-R1517, vol. 280.
- Franz, M. et al., "N-terminal fragments of the proatrial natriuretic peptide in patients before and after hemodialysis treatment", *Kidney International*, 2000, pp. 374-383, vol. 58.
- Franz, M. et al., "Plasma concentration and urinary excretion of N-terminal proatrial natriuretic peptides in patients with kidney diseases", *Kidney International*, 2001, pp. 1928-1934, vol. 59.
- Gagelmann, M. et al., "Urodilatin (CDD/ANP-95-126) is not biologically inactivated by a peptidase from dog kidney cortex membranes in contrast to atrial natriuretic peptide/cardioidilatin (α -hANP/CDD-99-126)" *FEBS*, 1988, 233(2):249-254.
- Gower, W.R. et al., "Four peptides decrease human colon adenocarcinoma cell number and DNA synthesis via guanosine 3'5'-cyclic monophosphate", *International Journal of Gastrointestinal Cancer*, 2005, pp. 77-87, vol. 36, No. 2, abstract.
- Gratzner, H.G., "Monoclonal Antibody to 5-Bromo- and 5-Iododeoxyuridine: A New Reagent for Detection of DNA Replication", *Science*, Oct. 29, 1982, pp. 474-475, vol. 218.
- Gunning, M.E. et al., "Atrial Natriuretic Peptide₍₃₁₋₆₇₎ Inhibits Na⁺Transport in Rabbit Inner Medullary Collecting Duct Cells: Role of Prostaglandin E₂", *Journal of Clinical Investigation*, May 1992, pp. 1411-1417, vol. 89.
- Heim, J.M. et al., "Urodilatin and β -ANF: Binding Properties and Activation of Particulate Guanylate Cyclase", *Biochemical and Biophysical Research Communications*, Aug. 30, 1989, pp. 37-41, vol. 163, No. 1.
- Hunter, E.F.M. et al., "Analysis of peptides derived from Pro Atrial Natriuretic Peptide that circulate in man and increase in heart disease", *Scandinavian Journal of Clinical and Laboratory Investigation*, 1998, pp. 205-216, vol. 58.
- Jemal, A. et al., "Cancer Statistics, 2005", *CA: A Cancer Journal for Clinicians*, 2005, pp. 10-30, vol. 55.
- La Vecchia, C. et al., "Smoking and Renal Cell Carcinoma", *Cancer Research*, Sep. 1, 1990, pp. 5231-5233, vol. 50.
- Martin, D.R. et al., "Three peptides from the ANF prohormone NH₂ are natriuretic and/or kaliuretic", *Am J Physiol Renal*, Dec. 1990, pp. F1401-F1408, vol. 258, abstract.
- McLaughlin, J.K. et al., "A Population-Based Case-Control Study of Renal Cell Carcinoma", *J Natl Cancer Inst*, Feb. 1984, pp. 275-284, vol. 72.
- Morstyn, G. et al., "Immunohistochemical Identification of Proliferating Cells in Organ Culture Using Bromodeoxyuridine and a Monoclonal Antibody", *The Journal of Histochemistry and Cytochemistry*, 1986, pp. 697-701, vol. 34, No. 6.
- Saba, S.R. et al., "Immunocytochemical Localization of Atrial Natriuretic Peptide, Vessel Dilator, Long-acting Natriuretic Peptide, and Kaliuretic Peptide in Human Pancreatic Adenocarcinomas", *Journal of Histochemistry & Cytochemistry*, 2005, pp. 989-995, vol. 53, No. 8.
- Saxenhofer, H. et al., "Urodilatin, a natriuretic factor from kidneys, can modify renal and cardiovascular function in men" *Am. J. Physiol.*, 1990, 259(5 Pt 2):F832-8.
- Saxenhofer, H. et al., "Urodilatin: binding properties and stimulation of cGMP generation in rat kidney cells", *Am J Physiol Renal Physiol*, 1993, pp. F267-F273, vol. 264, abstract.
- Schulz-Knappe, P. et al., "Isolation and Structural Analysis of "Urodilatin", a New Peptide of the Cardioidilatin-(ANP)-Family, Extracted from Human Urine", *Klinische Wochenschrift*, 1988, pp. 752-759, vol. 66.
- Shapiro, J.A. et al., "Body Mass Index and Risk of Renal Cell Carcinoma", *Epidemiology*, Mar. 1999, pp. 188-191, vol. 10, No. 2.
- Turner et al., "Urine cyclic nucleotide concentrations in cancer and other conditions; cyclic GMP: a potential marker for cancer-treatment" *J. Clin. Path.*, 1982, 35(8):800-806.
- Valentin, J.P. et al., "Urodilatin Binds to and Activates Renal Receptors for Atrial Natriuretic Peptide", *Hypertension*, 1993, pp. 432-438, vol. 21.
- Vesely, B.A. et al., "Primary Malignant Tumors of the Heart: Four Cardiovascular Hormones Decrease the Number and DNA Synthesis of Human Angiosarcoma Cells", *Cardiology*, 2006, pp. 226-233, vol. 105.

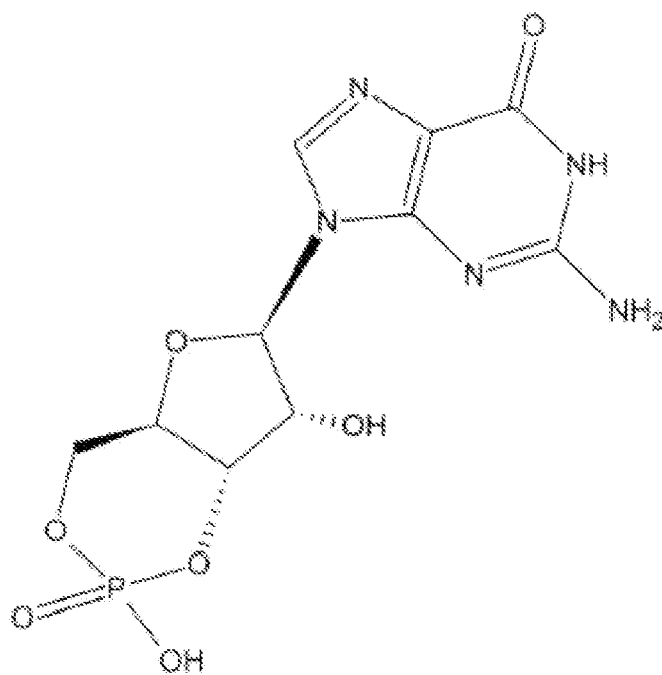
(56)

References Cited**OTHER PUBLICATIONS**

- Vesely, B.A. et al. "Urodilatin and four cardiac hormones decrease human renal carcinoma cell numbers" *Euro. J. Clinical Invest.*, 2006, 36:810-819.
- Vesely, B.A. et al. "Vessel dilator: Most potent of the atrial natriuretic peptides in decreasing the number and DNA synthesis of human squamous lung cancer cells", *Cancer Letters*, 2006, pp. 226-231, vol. 233.
- Vesely, D.L. "Atrial natriuretic peptides: Anticancer agents" *J. Invest. Med.*, 2005, 53(7):360-365.
- Vesely, D.L. et al. "Atrial Natriuretic Peptide Increases Urodilatin in the Circulation", *American Journal of Nephrology*, 1998, pp. 204-213, vol. 18, abstract.
- Vesely, D.L. et al. "Atrial Natriuretic Prohormone Peptides 1-30, 31-67, and 79-98 Vasodilate the Aorta", *Biochemical and Biophysical Research Communications*, Nov. 13, 1987, pp. 1540-1548, vol. 148, No. 3.
- Vesely, D.L. et al. "Increased Release of the N-Terminal and C-Terminal Portions of the Prohormone of Atrial Natriuretic Factor During Immersion-Induced Central Hypervolemia in Normal Humans", *Proc Soc Exp Biol Med*, 1989, pp. 230-235, vol. 192.
- Vesely, D.L. et al. "Negative Feedback of Atrial Natriuretic Peptides", *Journal of Clinical Endocrinology and Metabolism*, 1994, pp. 1128-1134, vol. 78, No. 5.
- Vesely, D.L. et al. "Three peptides from the atrial natriuretic factor prohormone amino terminus lower blood pressure and produce diuresis, natriuresis, and/or kaliuresis in humans", *Circulation*, 1994, pp. 1129-1140, vol. 90.
- Vesely, D.L. et al. "Vessel Dilator Enhances Sodium and Water Excretion and Has Beneficial Hemodynamic Effects in Persons With Congestive Heart Failure", *Circulation*, 1998, pp. 323-329, vol. 98.
- Vesely, D.L., "Atrial Natriuretic Peptide Prohormone Gene Expression: Hormones and Diseases That Upregulate its Expression", *IUBMB Life*, 2002, pp. 153-159, vol. 53.
- Vesely, D.L., "Natriuretic peptides and acute renal failure", *Am J Physiol Renal Physiol*, 2003, pp. F167-F177, vol. 285.
- Villarreal, D. et al. "Hemodynamic and Renal Effects of Pro-ANF₃₁₋₆₇ in Hypertensive Rats₍₄₄₃₉₉₎", *Proceedings of the Society for Experimental Biology and Medicine*, 1999, pp. 166-170, vol. 221, No. 3.
- Winters, C.J. et al. "The N-Terminus and a 4,000-MW Peptide From the Midportion of the N-Terminus of the Atrial Natriuretic Factor Prohormone Each Circulate in Humans and Increase in Congestive Heart Failure", *Circulation*, 1989, pp. 438-449, vol. 80.
- Yagoda, A. et al. "Chemotherapy for advanced renal-cell carcinoma: 1983-1993", *Seminars in Oncology*, Feb. 1995, pp. 42-60, vol. 22, No. 1.
- Yang, J.C. et al. "Randomized Study of High-Dose and Low-Dose Interleukin-2 in Patients With Metastatic Renal Cancer", *Journal of Clinical Oncology*, Aug. 15, 2003, pp. 3127-3132, vol. 21, No. 16.
- Yu, C.C.W. et al. "The assessment of cellular proliferation by immunohistochemistry: A review of currently available methods and their applications", *The Histochemical Journal*, 1992, pp. 121-131, vol. 24, No. 3, abstract.
- Yu, M.C. et al. "Cigarette Smoking, Obesity, Diuretic Use, and Coffee Consumption as Risk Factors for Renal Cell Carcinoma", *J Natl Cancer Inst*, Aug. 1986, pp. 351-356, vol. 77.
- Zeidel, M.L., "Regulation of Collecting Duct Na⁺ Reabsorption by ANP 31-67", *Clinical and Experimental Pharmacology and Physiology*, 1995, pp. 121-124, vol. 22, abstract.
- Appel, R. "Growth-regulatory properties of atrial natriuretic factor" *Am. J. Physiology*, 1992, 262:F911-F918.
- Vesely, D.L. et al. "Specific binding site for pro atrial natriuretic factors 1-30, 31-67, and 99-126 on distal nephrons, proximal tubules, renal cortical and medullary membranes" *Ren. Physiol. Biochem.*, 1992, 15(1):23-32, abstract only.

* cited by examiner

Fig. 1



126 amino acid (a.a.) ANP Prohormone

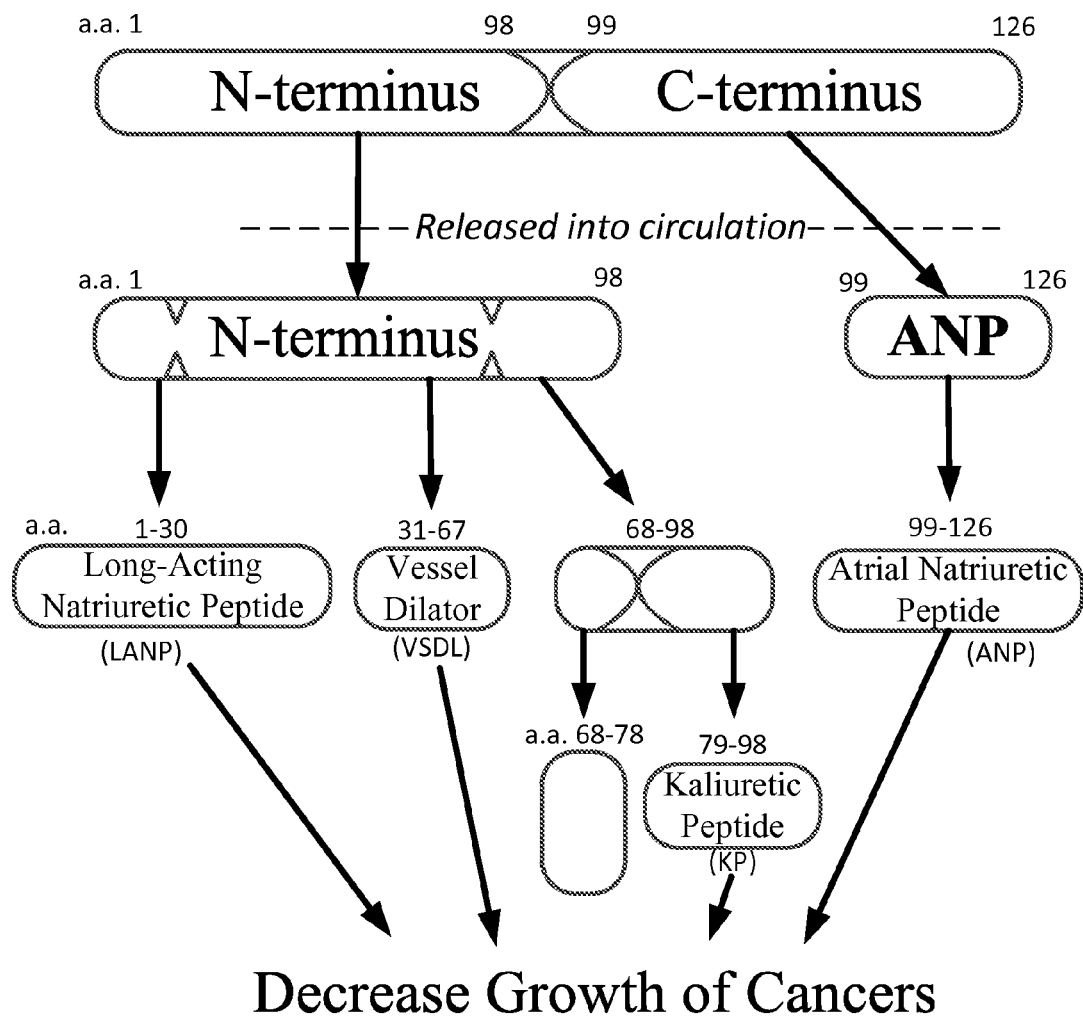


FIG. 2

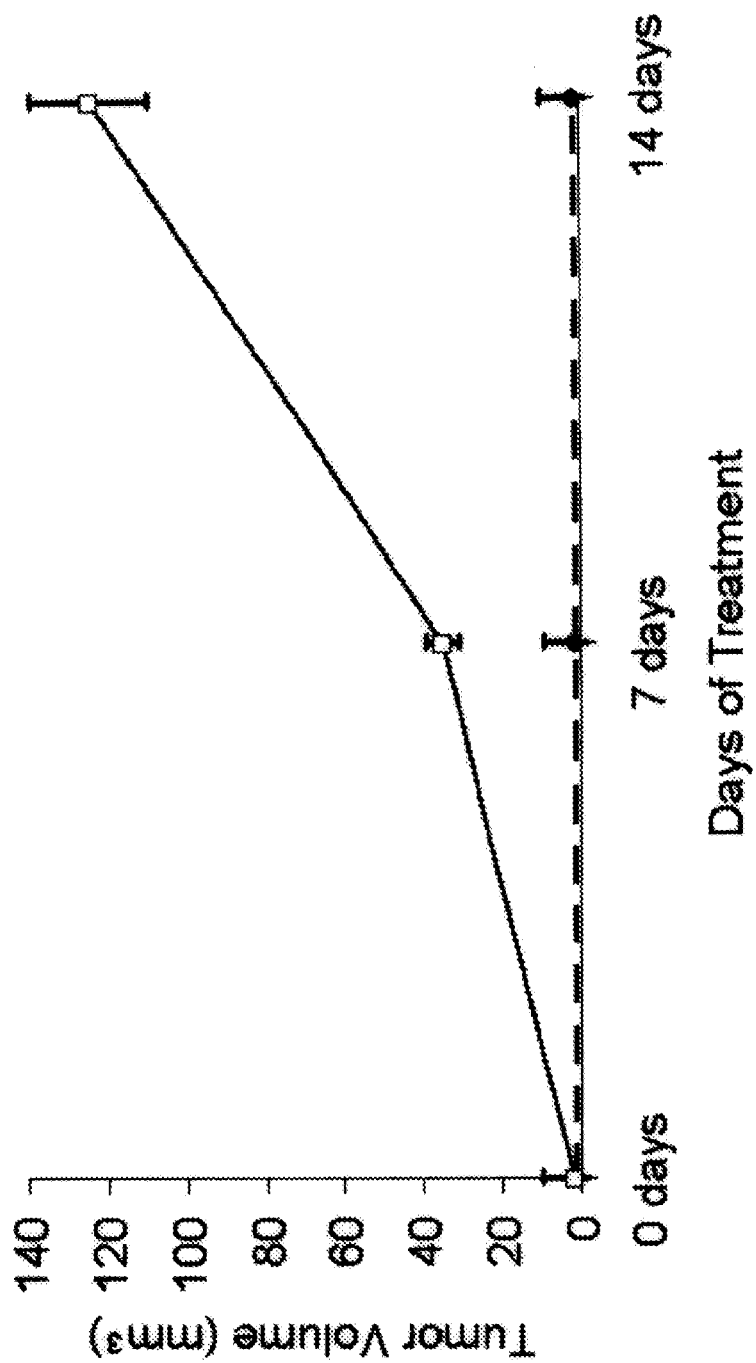


Fig. 3

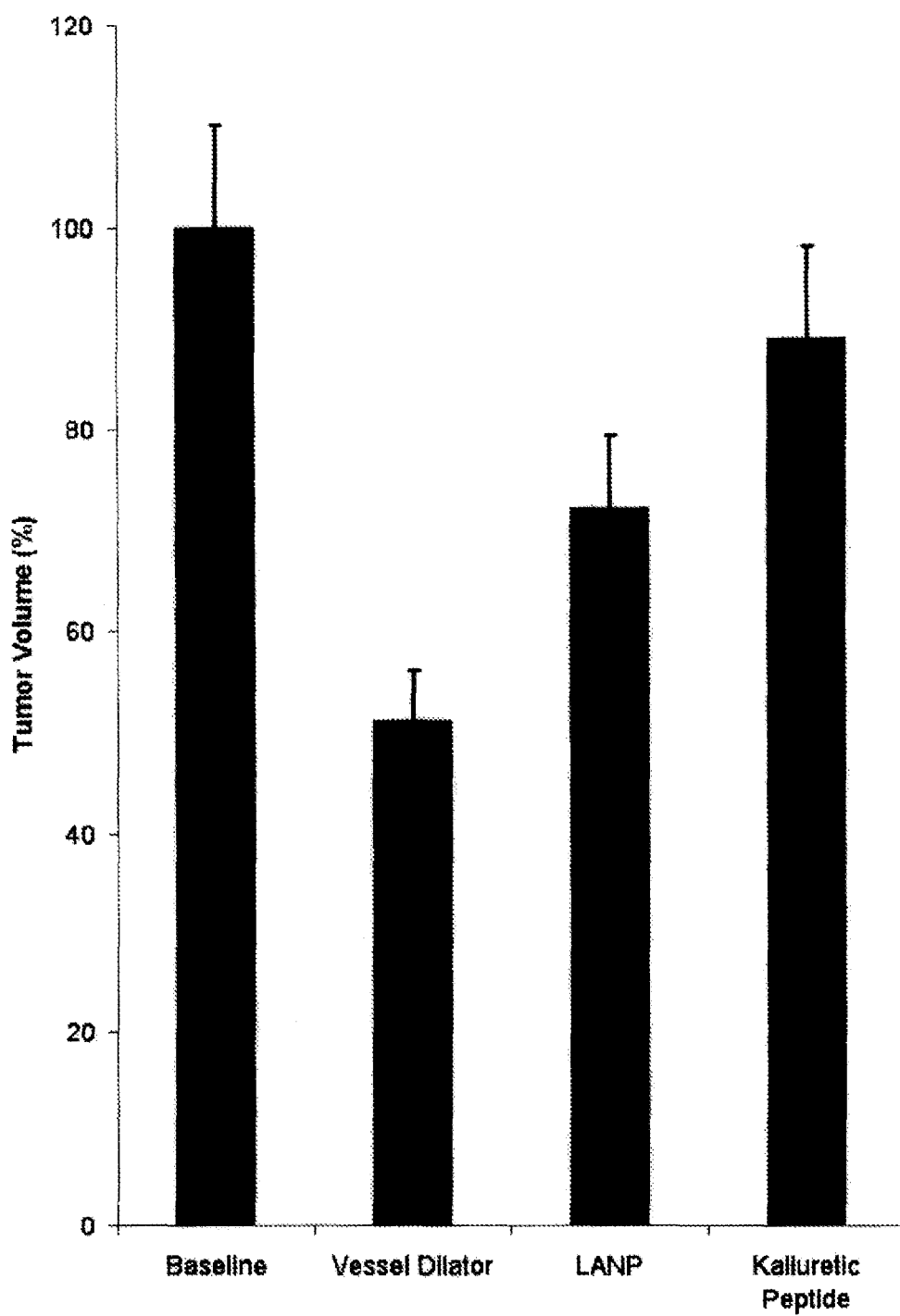


Fig. 4

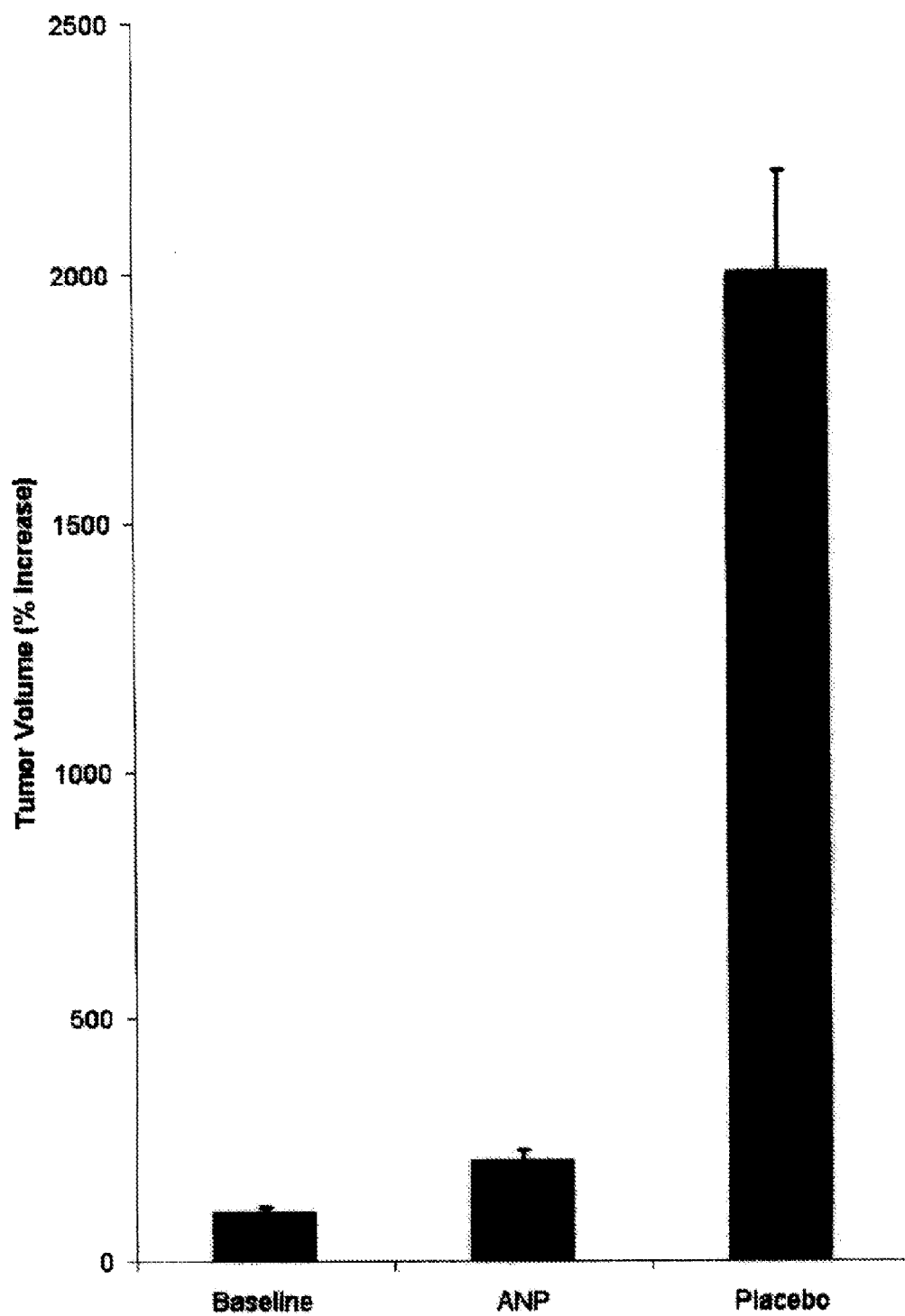


Fig.5

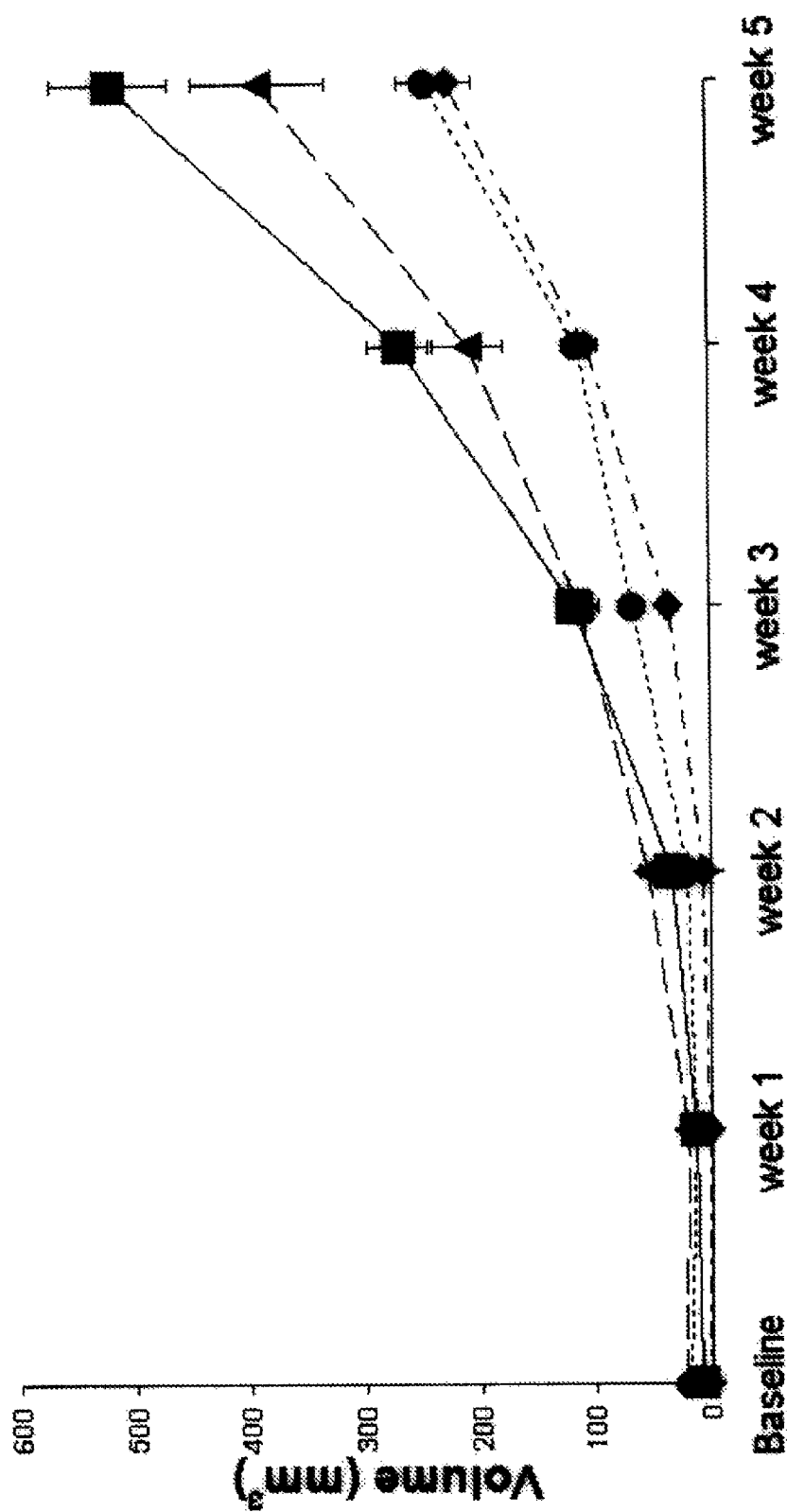


Fig. 6

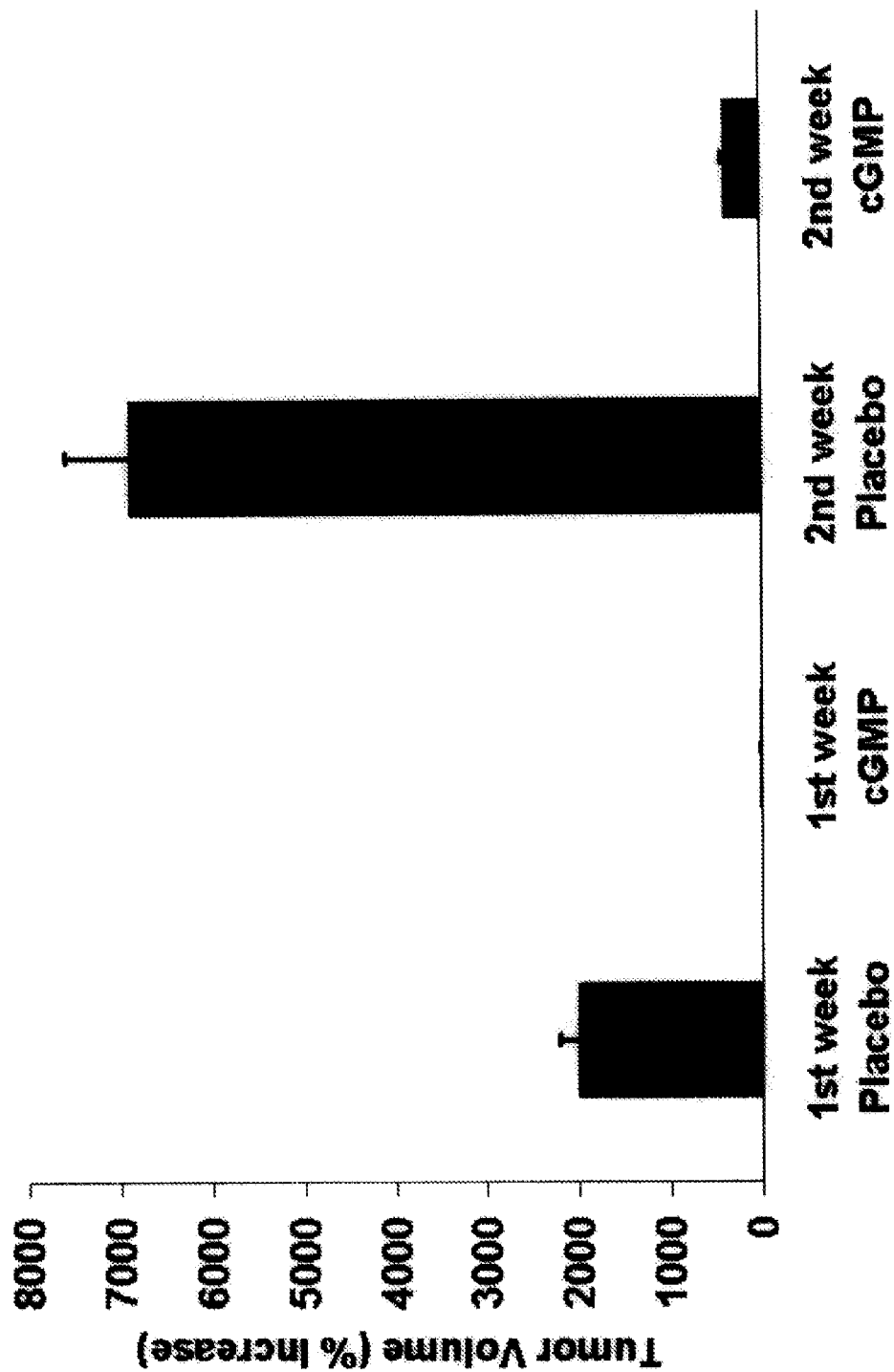


Fig. 7

Fig. 8

	<u>Volume^B (mm³)</u>	<u>Increase^C</u>
Baseline ^A	1.8	—
1 st week	35.3	20-fold
2 nd week	124	69-fold
3 rd week	309	172-fold
4 th week	539	299-fold
5 th week	1003	557-fold
6 th week	1307	726-fold
7 th week	1783	991-fold
8 th week	2351	1306-fold

METHOD OF TREATMENT OF CANCER USING GUANOSINE 3', 5' CYCLIC MONOPHOSPHATE (CYCLIC GMP)

CROSS-REFERENCE TO RELATED APPLICATIONS

The present application is a continuation of U.S. application Ser. No. 11/162,056, filed Aug. 26, 2005, now U.S. Pat. No. 8,759,317, which claims the benefit of U.S. Provisional Application Ser. No. 60/522,178, filed Aug. 26, 2004; U.S. application Ser. No. 11/162,056 is a continuation-in-part of U.S. application Ser. No. 10/708,688, filed Mar. 18, 2004, now U.S. Pat. No. 6,943,147, the texts of which are incorporated herein by reference.

BACKGROUND OF THE INVENTION

Human pancreatic adenocarcinomas have the lowest 5-year survival rate of all common cancers. The five-year survival rate of persons with adenocarcinoma of the pancreas is 1%. The median survival is 4.1 months. Current cancer chemotherapy and surgery prolong survival by a few months but the above survival rates are for persons treated with surgery and/or currently available cancer chemotherapeutic agents.

A family of peptides referred to as atrial natriuretic peptides (ANPs) are synthesized within the heart and stored in the atrial myocyte as prohormones for rapid release in response to stimuli. The atrial natriuretic peptide (ANP) gene synthesizes a 126 amino acid (a.a.) prohormone which contains four peptide hormones consisting of a.a. 1-30 (i.e., long acting natriuretic peptide, LANP) a.a. 31-67 (vessel dilator), a.a. 79-98 (kaliuretic peptide) and atrial natriuretic peptide (ANP, a.a. 99-126 of this prohormone). Known biologic properties of these four peptide hormones include blood pressure lowering, diuresis, enhanced sodium and/or potassium excretion when infused into healthy animals and humans. One of these peptide hormones, i.e., ANP has been investigated for growth regulatory properties. In blood vessels, ANP inhibits smooth muscle cell proliferation (hyperplasia) as well as smooth muscle cell growth (hypertrophy). ANP has growth-regulatory properties in a variety of other tissues including brain, bone, myocytes, red blood cell precursors, and endothelial cells. In the kidney, ANP causes antimitogenic and antiproliferative effects in glomerular mesangial cells via inhibiting DNA synthesis. [Cyclic GMP] mediates most of the effects of these four peptide hormones. Thus, cyclic GMP causes vasodilation by itself and mediates the blood pressure lowering effects of these hormones. Vessel dilator and LANP as well as ANP enhance membrane-bound guanylate cyclase to increase cyclic GMP in vasculature. Cyclic GMP [i.e., 8-bromoguanosine 3',5'-cyclic monophosphate] decreases the number of human breast and prostate adenocarcinomas, as well as small-cell and squamous cell lung carcinoma cells in culture by 30% (1 μ M), 84% (1 mM), 31% (1 μ M) and 30% (1 μ M).

BRIEF SUMMARY OF THE INVENTION

8-bromo-cyclic GMP (1 μ M) decreases DNA synthesis in human pancreatic, breast, and prostate adenocarcinoma cells as well as human small-cell and squamous cell lung carcinoma cells by 51%, 54%, 56%, 50%, and 52%, respectively. Dose-response curves on human pancreatic cancer cells revealed that 8-bromo-cyclic GMP decreased DNA synthesis in these cancer cells by 46%, 42%, 39% and 34% (all

$P < 0.05$) at its 3 mM, 1 mM, 100 μ M, and 1 μ M concentrations respectively. Even at a 1 nM (i.e., 10^{-9} M) of 8-bromo-cyclic GMP there was a 25% inhibition of DNA synthesis in the human pancreatic adenocarcinoma cells. At 100 pM of 8-bromo-cyclic GMP, its effects on DNA synthesis in the pancreatic adenocarcinoma cells became not significant (14% decrease). Cell cycle analysis performed by Becton Dickinson flow cytometer FACS scan indicates that cyclic GMP decreases the number of breast cancer cells in the S-phase of the cell cycle by 39% (i.e., causing cell cycle arrest). 8-bromo-cyclic GMP when infused for two weeks at 2.4 μ g/kg body weight/min decreased the tumor volume of human pancreatic adenocarcinomas in athymic mice in one week by 95% compared to untreated human pancreatic tumors in athymic mice.

In one embodiment, the present invention provides a method of modulating the growth of cancer cells comprising the step of contacting at least one target cell with an effective amount of at least one intracellular mediator of a peptide hormone derived from the atrial natriuretic peptide prohormone. The peptide hormone derived from the atrial natriuretic peptide prohormone is selected from the group consisting of atrial natriuretic peptide, long acting natriuretic peptide, vessel dilator, and kaliuretic peptide. The intracellular mediator of a peptide hormone derived from the atrial natriuretic peptide prohormone is cyclic GMP, or a cell permeable analog thereof. It has been shown that the method provided is effective against adenocarcinomas, sarcomas, small-cell carcinomas and squamous cell carcinoma in vivo.

In an alternate embodiment, the present invention provides a method of inhibiting the growth of cancer cells comprising the steps of contacting at least one target cell with an effective amount of at least one intracellular mediator of a peptide hormone derived from the atrial natriuretic peptide prohormone and co-administering an effective amount of at least one peptide hormone derived from the atrial natriuretic peptide prohormone. As with the previous embodiment, the peptide hormone derived from the atrial natriuretic peptide prohormone is selected from the group consisting of atrial natriuretic peptide, long acting natriuretic peptide, vessel dilator, and kaliuretic peptide and the intracellular mediator is cyclic GMP, or a cell permeable analog thereof.

BRIEF DESCRIPTION OF THE DRAWINGS

For a fuller understanding of the nature and objects of the invention, reference should be made to the following detailed description, taken in connection with the accompanying drawings, in which:

FIG. 1 is a visualization of the cyclic GMP molecule.

FIG. 2. The atrial natriuretic peptide (ANP) gene synthesizes a 126 amino acid (a.a.) prohormone which contains four peptide hormones consisting of amino acids 1-30 (i.e., long acting natriuretic peptide, LANP) a.a. 31-67 (vessel dilator), a.a. 79-98 (kaliuretic peptide) and atrial natriuretic peptide (ANP, a.a. 99-126 of this prohormone).

FIG. 3. Vessel dilator (*) completely inhibits the growth of human pancreatic adenocarcinomas in athymic mice. Vessel dilator infused at a concentration of 139 ng/min/kg of body weight (n=14) significantly ($P < 0.0001$) inhibited the growth of pancreatic adenocarcinomas during the two weeks of its infusion compared to placebo (□) treated mice (n=30) when evaluated by a two-factor ANOVA.

FIG. 4. Long acting natriuretic peptide (LANP), vessel dilator, and kaliuretic peptide decrease tumor volume during the first week of treatment with 1.4 μ g/kg body wt/min.

3

compared to their baseline tumor volume, i.e., palpable tumor volume before infusion, this decrease in tumor volume was significant at $P < 0.01$ for vessel dilator and $P < 0.05$ for long acting natriuretic peptide and kaliuretic peptide when evaluated by ANOVA with repeated measures design with a Fishers LSD as a post hoc test. This decrease in tumor volume versus control (20-fold increase) was significant at $P < 0.001$ for each of these peptide hormones. ($n=5$ in each group).

FIG. 5. Atrial natriuretic peptide (ANP) decreases the growth of human pancreatic adenocarcinomas. During the first week of its infusion, ANP at 1.4 $\mu\text{g/kg}$ of body weight/min decreased the growth of the pancreatic adenocarcinomas from 20-fold increase for the placebo-treated adenocarcinoma ($n=30$) to a 2-fold ($n=5$) increase compared to its baseline (first palpable) tumor volume which was significant at $P < 0.001$ when evaluated with a 2-factor ANOVA for between group comparisons.

FIG. 6. Decreasing effect of ANP (■), LANP (●), vessel dilator (◆) and kaliuretic peptide (▲) with increasing length of their respective infusions. When each of these peptide hormones were infused for four weeks at their respective 1.4 $\mu\text{g/min/kg}$ of body weight concentrations there was a mean doubling in human pancreatic tumor volume weekly from the second week through the fourth week and in the week after stopping their infusion (week 5) that was significant at $P < 0.05$ when evaluated by ANOVA with a repeated measures design for within group comparisons with Fishers LSD as a post hoc test. United (control) human pancreatic adenocarcinomas are illustrated as ○.

FIG. 7. Cyclic GMP decreases the growth of human pancreatic adenocarcinomas. 8-bromo-cyclic GMP, the cell permeable analog of cyclic GMP, was infused for two weeks at 5 mM/kg body weight/min with only a 0.4 mm^3 increase in tumor volume in one week. In the treated animals (versus 35 mm^3 increase in tumor volume in placebo treated mice, $P < 0.01$). The 2-fold increase in tumor volume at the end of two weeks with cyclic GMP that was significant ($P < 0.01$) compared to a 69-fold increase in tumor volume of placebo-treated athymic mice with human pancreatic adenocarcinomas when evaluated by a 2 factor ANOVA for between group comparisons.

FIG. 8. Mean tumor volume and fold-increase in tumor volume of human pancreatic adenocarcinomas in 30 athymic mice over a two-month period.

DETAILED DESCRIPTION OF THE PREFERRED EMBODIMENT

In the following detailed description of the preferred embodiments, reference is made to the accompanying drawings, which form a part hereof, and within which are shown by way of illustration specific embodiments by which the invention may be practiced. It is to be understood that other embodiments may be utilized and structural changes may be made without departing from the scope of the invention.

Pharmaceutical Compositions

The compounds of the present invention (referred to herein as "active compounds") can be incorporated into pharmaceutical compositions suitable for administration. Such compositions typically comprise a cyclic nucleotide of 3',5'-guanosine monophosphate (cGMP), or a cell permeable analog thereof, and a pharmaceutically acceptable carrier. As used herein the language "pharmaceutically acceptable carrier" is intended to include any and all solvents, dispersion media, coatings, antibacterial and antifungal agents, isotonic and absorption delaying agents, and the like, compatible

4

with pharmaceutical administration. The use of such media and agents for pharmaceutically active substances is well known in the art. Except insofar as any conventional media or agent is incompatible with the active compound, use thereof in the compositions is contemplated. Supplementary active compounds can also be incorporated into the compositions.

A pharmaceutical composition of the invention is formulated to be compatible with its intended route of administration. Examples of routes of administration include parenteral, e.g., intravenous, intradermal, subcutaneous, oral, inhalation, transdermal (topical), and transmucosal administration. Solutions or suspensions used for parenteral, intradermal, or subcutaneous application can include the following components: a sterile diluent such as water for injection, saline solution, fixed oils, polyethylene glycols, glycerine, propylene glycol or other synthetic solvents; antibacterial agents such as benzyl alcohol or methyl parabens; antioxidants such as ascorbic acid or sodium bisulfite; chelating agents such as ethylenediaminetetraacetic acid; buffers such as acetates, citrates or phosphates and agents for the adjustment of tonicity such as sodium chloride or dextrose. pH can be adjusted with acids or bases, such as hydrochloric acid or sodium hydroxide. The parenteral preparation can be enclosed in ampoules, disposable syringes or multiple dose vials made of glass or plastic.

Pharmaceutical compositions suitable for injectable use include sterile aqueous solutions (where water soluble) or dispersions and sterile powders for the extemporaneous preparation of sterile injectable solutions or dispersion. For intravenous administration, suitable carriers include physiological saline, bacteriostatic water, Cremophor EL (BASF; Parsippany, N.J.) or phosphate buffered saline (PBS). In all cases, the composition must be sterile and should be fluid to the extent that easy syringability exists. It must be stable under the conditions of manufacture and storage and must be preserved against the contaminating action of microorganisms such as bacteria and fungi. The carrier can be a solvent or dispersion medium containing, for example, water, ethanol, polyol (for example, glycerol, propylene glycol, and liquid polyethylene glycol, and the like), and suitable mixtures thereof. The proper fluidity can be maintained, for example, by the use of a coating such as lecithin, by the maintenance of the required particle size in the case of dispersion and by the use of surfactants. Prevention of the action of microorganisms can be achieved by various antibacterial and antifungal agents, for example, parabens, chlorobutanol, phenol, ascorbic acid, thimerosal, and the like. In many cases, it will be preferable to include isotonic agents, for example, sugars, polyalcohols such as mannitol, sorbitol, sodium chloride in the composition. Prolonged absorption of the injectable compositions can be brought about by including in the composition an agent which delays absorption, for example, aluminum monostearate and gelatin.

Sterile injectable solutions can be prepared by incorporating the active compound in the required amount in an appropriate solvent with one or a combination of ingredients enumerated above, as required, followed by filtered sterilization. Generally, dispersions are prepared by incorporating the active compound into a sterile vehicle which contains a basic dispersion medium and the required other ingredients from those enumerated above. In the case of sterile powders for the preparation of sterile injectable solutions, the preferred methods of preparation are vacuum drying and freeze-drying which yields a powder of the active ingredient plus any additional desired ingredient from a previously sterile-filtered solution thereof.

5

Oral compositions generally include an inert diluent or an edible carrier. They can be enclosed in gelatin capsules or compressed into tablets. For the purpose of oral therapeutic administration, the active compound can be incorporated with excipients and used in the form of tablets, troches, or capsules. Pharmaceutically compatible binding agents, and/or adjuvant materials can be included as part of the composition. The tablets, pills, capsules, troches and the like can contain any of the following ingredients, or compounds of a similar nature: a binder such as microcrystalline cellulose, gum tragacanth or gelatin; an excipient such as starch or lactose, a disintegrating agent such as alginic acid, Primogel, or corn starch; a lubricant such as magnesium stearate or Sterotes; a glidant such as colloidal silicon dioxide; a sweetening agent such as sucrose or saccharin; or a flavoring agent such as peppermint, methyl salicylate, or orange flavoring. For administration by inhalation, the compounds are delivered in the form of an aerosol spray from pressured container or dispenser which contains a suitable propellant, e.g., a gas such as carbon dioxide, or a nebulizer.

Systemic administration can also be by transmucosal or transdermal means. For transmucosal or transdermal administration, penetrants appropriate to the barrier to be permeated are used in the formulation. Such penetrants are generally known in the art, and include, for example, for transmucosal administration, detergents, bile salts, and fusidic acid derivatives. Transmucosal administration can be accomplished through the use of nasal sprays or suppositories. For transdermal administration, the active compounds are formulated into ointments, salves, gels, or creams as generally known in the art.

In one embodiment, the active compounds are prepared with carriers that will protect the compound against rapid elimination from the body, such as a controlled release formulation, including implants and microencapsulated delivery systems. Biodegradable, biocompatible polymers can be used, such as ethylene vinyl acetate, polyanhydrides, polyglycolic acid, collagen, polyorthoesters, and polylactic acid. Methods for preparation of such formulations will be apparent to those skilled in the art. The materials can also be obtained commercially from Alza Corporation and Nova Pharmaceuticals, Inc. Liposomal suspensions (including liposomes targeted to infected cells with monoclonal antibodies to viral antigens) can also be used as pharmaceutically acceptable carriers. These can be prepared according to methods known to those skilled in the art.

It is advantageous to formulate oral or parenteral compositions in dosage unit form for ease of administration and uniformity of dosage. Dosage unit form as used herein refers to physically discrete units suited as unitary dosages for the subject to be treated; each unit containing a predetermined quantity of active compound calculated to produce the desired therapeutic effect in association with the required pharmaceutical carrier. The specification for the dosage unit forms of the invention are dictated by and directly dependent on the unique characteristics of the active compound and the particular therapeutic effect to be achieved, and the limitations inherent in the art of compounding such an active compound for the treatment of individuals.

The pharmaceutical compositions can be included in a container, pack, or dispenser together with instructions for administration.

Pharmacogenomics

Agents, or modulators which have a stimulatory or inhibitory effect on cGMP activity as identified by a screening assay can be administered to individuals to treat (prophylactically or therapeutically) disorders (e.g., drug-resistance)

6

associated with aberrant cGMP activity. In conjunction with such treatment, the pharmacogenomics (i.e., the study of the relationship between an individual's genotype and that individual's response to a foreign compound or drug) of the individual may be considered. Differences in metabolism of therapeutics can lead to severe toxicity or therapeutic failure by altering the relation between dose and blood concentration of the pharmacologically active drug. Thus, the pharmacogenomics of the individual permits the selection of effective agents (e.g., drugs) for prophylactic or therapeutic treatments based on a consideration of the individual's genotype. Such pharmacogenomics can further be used to determine appropriate dosages and therapeutic regimens. Accordingly, the activity of the target gene protein, expression of the target gene nucleic acid, or mutation content of the target gene genes in an individual can be determined to thereby select appropriate agent(s) for therapeutic or prophylactic treatment of the individual.

Pharmacogenomics deals with clinically significant hereditary variations in the response to drugs due to altered drug disposition and abnormal action in affected persons. See, e.g., Linder (1997) Clin. Chem. 43(2): 254-266. In general, two types of pharmacogenetic conditions can be differentiated. Genetic conditions transmitted as a single factor altering the way drugs act on the body (altered drug action) or genetic conditions transmitted as single factors altering the way the body acts on drugs (altered drug metabolism). These pharmacogenetic conditions can occur either as rare defects or as polymorphisms. For example, glucose-6-phosphate dehydrogenase deficiency (G6PD) is a common inherited enzymopathy in which the main clinical complication is haemolysis after ingestion of oxidant drugs (anti-malarials, sulfonamides, analgesics, nitrofurans) and consumption of fava beans.

Thus, the activity of cGMP, expression of cGMP, or mutation content of the target gene genes in an individual can be determined to thereby select appropriate agent(s) for therapeutic or prophylactic treatment of the individual. In addition, pharmacogenetic studies can be used to apply genotyping of polymorphic alleles encoding drug-metabolizing enzymes to the identification of an individual's drug responsiveness phenotype. This knowledge, when applied to dosing or drug selection, can avoid adverse reactions or therapeutic failure and thus enhance therapeutic or prophylactic efficiency when treating a subject with a the target gene modulator, such as a modulator identified by one of the exemplary screening assays described herein.

Terms

As used herein "cyclic GMP," "cGMP," and "cyclic guanosine 3',5'-monophosphate" refers to a cyclic nucleotide of guanosine monophosphate which functions at the cellular level to mediate the action of certain hormones across the cellular membrane. [c]GMP is a cyclic nucleotide derived from the guanosine triphosphate (GTP). [c]GMP functions a second messenger by activating intracellular protein kinases in response to the binding of membrane-impermeable peptide hormones to the cell surface. [c]GMP is graphically depicted in FIG. 1

As used herein an "analog" of a cyclic GMP refers to a compound which retains chemical structures of cyclic GMP necessary for functional activity of cyclic GMP yet which also contains certain chemical structures which differ from cyclic GMP. An example of an analogue of a naturally-occurring peptide is a peptide which includes one or more non-naturally-occurring amino acids.

As used herein, "a clinical response" is the response of the tumor to treatment with the active compounds of the present

invention. Criteria for determining a response to therapy are widely accepted and enable comparisons of the efficacy alternative treatments (see Slapak and Kufe, Principles of Cancer Therapy, in Harrison's Principles of Internal Medicine, 13th edition, eds. Isselbacher et al., McGraw-Hill, Inc. 1994). A complete response (or complete remission) is the disappearance of all detectable malignant disease. A partial response is an approximately 50 percent decrease in the product of the greatest perpendicular diameters of one or more tumors. There can be no increase in size of any lesion or the appearance of new lesions. Progressive disease means at least an approximately 25 percent increase in the product of the greatest perpendicular diameter of one lesion or the appearance of new lesions. The response to treatment is evaluated after the subjects had completed therapy.

The term "modulating" as used herein means changing, adjusting, or varying a property of a tissue, cell, or molecule, cellular proliferative disease or tumor including varying the quantity, activity, size, rate of growth, or capacity of the cellular proliferative disease, tumor, tissue, cell, or molecule. For example, modulation may cause an increase or a decrease in cellular activity, growth, inhibited DNA synthesis, apoptosis or any other biological, functional or immunological properties associated with cGMP.

A "therapeutically effective amount" of the active compounds containing cGMP, atrial natriuretic peptides, or any combination thereof is that amount necessary to provide a clinical response in vivo. The amount of the active compounds containing cGMP, atrial natriuretic peptides, or any combination thereof must be effective to achieve a response, including but not limited to total prevention of (e.g., protection against) and to improved survival rate or more rapid recovery, or improvement or elimination of symptoms associated with a cellular proliferative disease or other indicators as are selected as appropriate measures by those skilled in the art.

Atrial Natriuretic Peptide

The atrial natriuretic peptide (ANP) gene synthesizes four cardiovascular hormones i.e. vessel dilator, long acting natriuretic peptide, kaliuretic peptide and ANP which decrease the number of human pancreatic adenocarcinoma cells in culture by 65%, 47%, 37%, and 34%, respectively. The ANP gene synthesizes a 126 amino acid (a.a.) prohormone which contains four peptide hormones consisting of a.a. 1-30 (i.e., long acting natriuretic peptide, LANP) a.a. 31-67 (vessel dilator), a.a. 79-98 (kaliuretic peptide) and atrial natriuretic peptide (ANP, a.a. 99-126 of this prohormone) (FIG. 2) Previously, none of the cardiovascular hormones have been investigated to determine if they inhibit the growth in vivo. These four hormones were evaluated for their ability to inhibit the growth of human pancreatic adenocarcinomas in athymic mice.

Vessel dilator infused for 14 days completely stopped the growth of human pancreatic adenocarcinomas in athymic mice (n=14) with a decrease in their tumor volume while placebo (n=30) treated mice's tumor volume increased 69-fold (P<0.001). When these peptide hormones were infused for four weeks, tumor volume decreased after one week 49%, 28%, and 11% secondary to vessel dilator, long acting natriuretic peptide and kaliuretic peptide with a one- and 20-fold increase in the tumor volume in ANP- and placebo-treated mice. Cyclic GMP inhibited after one week the growth of this cancer 95%. From the second week onwards, the treated cancers began to approximately double their volume weekly.

Accordingly, these results suggest that these peptide hormones have useful anti-cancer properties as they each inhibit

the growth of human pancreatic adenocarcinomas in vivo and three decrease the volume of the tumors (up to 49%). Their mechanism of doing so appears to be mediated by cyclic GMP. Cyclic GMP itself inhibited the growth of this cancer 95%. When two of these peptide hormones (i.e., LANP and vessel dilator) were given weekly for four weeks (i.e., pumps with fresh peptide were changed weekly) in a preliminary investigation in athymic mice with human breast carcinomas, after three weeks of treatment the breast adenocarcinoma completely disappeared in the majority of the treated mice. The present in vivo investigations indicate that ideally they should be given weekly.

The inventor has recently found that vessel dilator, long acting natriuretic peptide, kaliuretic peptide and ANP decrease the number of human pancreatic adenocarcinoma cells in culture by 65%, 47%, 37% and 34%, respectively, within 24 hours. This decrease was sustained without any proliferation of the adenocarcinoma cells occurring in the three days following this decrease in number. ANP has also been reported to decrease the number of hepatoblastoma cells in culture. The mechanism of these peptide hormones' decrease in cancer cell number and antiproliferative effects was an 83% or greater inhibition of DNA synthesis but not owing to enhanced apoptosis, i.e., programmed cell death. One of the known mediators of these peptide hormones' mechanism(s) of action, i.e., cyclic GMP inhibited DNA synthesis in these adenocarcinoma cells by 51%. There was no cytotoxicity to normal cells in these studies. None of the cardiovascular hormones have ever been investigated as to whether they could inhibit the growth of adenocarcinomas (or any other cancer) in vivo.

The inventor sought to determine if one or more of the above four cardiovascular hormones could inhibit the growth of human pancreatic adenocarcinomas in vivo in athymic mice by infusing these peptide hormones for two and four weeks. When each of the four peptide hormones inhibited the growth of the human adenocarcinomas in vivo, one of the mechanisms of their action i.e., the intracellular messenger cyclic GMP was investigated as whether it mediates their ability to inhibit the growth of adenocarcinomas in vivo. This novel approach of using cardiovascular hormones and/or cyclic GMP to inhibit the growth of cancers without the usual side effects of currently utilized chemotherapeutic agents (marrow suppression, etc.) with these normally circulating hormones and normal intracellular messenger cyclic GMP is a valuable addition to current treatment of cancer.

Example I: Human Pancreatic Adenocarcinoma Cells

A cell line (ATCC number CRL-2119) of human pancreatic adenocarcinoma cells was purchased from the American Type Culture Association (ATCC), Manassas, Va. This pancreatic adenocarcinoma cell line was derived in 1994 from a nude mouse xenograft of a primary tumor removed from the head of the pancreas. These adenocarcinoma cells are tumorigenic in that they form tumors in athymic nude mice at the site of inoculation that are histologically similar to the tumor of origin.

Culture of Pancreatic Adenocarcinoma Cells for Tumor Formation In Vivo

Propagation of these cells was in Dulbecco's modified Eagle's plus Ham's F12-A 1:1 mixture of Dulbecco's modified Eagle's medium Ham's F12 medium containing 1-2 g L⁻¹ of sodium bicarbonate (Sigma Chemical Co., St. Louis, Mo.) supplemented with 15 mM of HEPES and FBS 10%,

at a temperature of 37° C., as recommended by the ATCC. Cells were dispensed into new flasks with subculturing every 6-8 days. The growth medium was changed every three days. Prior to injection of these individual cells into animals to produce tumors, the cells were harvested by brief treatment with 0.5% trypsin and 0.02% EDTA followed by fresh medium containing 10% fetal bovine serum to stop trypsinization. Only single cell suspension with a viability of >90% were used for the injections.

Animal Model

Homozygous (nu/nu) athymic nude mice from the National Cancer Institute (NCI) were used for these studies. The nude gene in homozygous (nu/nu) mice causes the lack of fur and an abnormal thymus. The deficiency in T-cell function allows athymic mice to accept and grow xenografts as well as allograft of normal and malignant tissues. NCr-nu breeder stock was obtained from the NCI in 1993 after several years of random breeding. It was hysterectomy derived to achieve germfree status prior to its introduction into IBU colonies. This outbred stock has both BALB/c inbred and NIH(S) outbred stock in its genetic background. Six week old athymic mice were utilized for these studies as they weigh approximately 20 grams at this time period, and the osmotic pumps that were used to infuse the respective four cardiovascular hormones and 8-bromo cGMP (cell permeable analog of cyclic GMP) were designed for 20 gram mice.

Human Pancreatic Adenocarcinomas in the Athymic Mice

Mice (20 grams) were given subcutaneous injections of either 1×10^6 of normal pancreatic cells (control for injections) or 1×10^6 of human pancreatic adenocarcinoma cells in 250 μ l of phosphate buffered saline, pH 7.4 on the back of the mice. These mice were palpitated at the site of injection daily starting the seventh day after the injection to determine the latency of the respective tumor formation(s). Tumor growth was followed by electronic digital Vernier caliper measurement every day with tumor volume recorded daily. Tumor volume was calculated by the formula $V = (a \times b^2) / 2$ where a=largest superficial diameter and b=the smallest superficial diameter.

Research Protocol

When the injected adenocarcinoma cells coalesced into well-defined tumors of at least 1 mm \times 1 mm (volume=0.5 mm³) or in a series of experiments when the tumors became quite large (volume=118 mm³), osmotic pumps (Alzet Models 1002 and 2004, Duret Corporation, Cupertino, Calif.) containing either 0.9% saline (control infusion) or one of the respective hormones in 0.9% saline as previously described from our laboratory were implanted subcutaneously under anesthesia in the upper back of the athymic mice. All of the peptide hormones for these experiments were synthesized by Phoenix Pharmaceuticals Inc., Belmont, Calif. In the series of experiments where the human pancreatic cancers were allowed to reach a large volume before the pumps in this protocol were implanted, this protocol was to simulate the human situation where these tumors are usually advanced in development and large when first discovered. The Alzet Model 1002 osmotic pump for mice delivers all of its contents (100 μ L) over 14 days at a rate of 0.25 μ L/h and then stops pumping. The Alzet Model 2004 for mice delivers all of its contents (200 μ L) over 28 days at a rate of 0.25 μ L/h and then stops pumping. Dose-response curves with 70 ng, 139 ng, and 1.4 μ g/kg body weight/min were performed. (These concentrations in 20 gram mice are 1.7 ng, 2.8 ng and 28 ng/min). All mice had free access to water and standard

mouse chow (Harland, Teklad, Madison, Wis.). All animals were euthanized one week after completing the respective infusions.

Infusion of Cyclic GMP

The cell permeable analog of cyclic GMP (i.e., 8-bromo cGMP, Sigma-Aldrich, St. Louis, Mo.) was infused via the Alzet Model 1002 osmotic pump (Duret Corp., Cupertino, Calif.) for a two-week period. The concentration utilized for these experiments was 5 mM/min/kg of body weight. 5 mM was chosen as it is the concentration which causes biological effects and is the concentration that was demonstrated in vitro to have maximal effect on inhibiting DNA synthesis in human pancreatic adenocarcinoma cells.

Statistical Analysis

The data obtained in these studies are given as the mean \pm SEM. Data were evaluated using an ANOVA with a repeated-measures design for within-group comparisons with Fisher's LSD as a post hoc test and a two-factor ANOVA design for between group comparisons. In all cases, P<0.05 was considered the criterion for statistical significance.

Aggressive Growth of Human Pancreatic Adenocarcinomas in Athymic Mice

After injecting the human pancreatic adenocarcinoma cells into athymic mice, in approximately 7 to 14 days these cancer cells develop a well-defined palpable cancer (approximately 1 mm \times 1 mm; volume=0.5 mm³). This cancer rapidly doubles in tumor volume approximately every two days at first. After one week, the cancers in 30 athymic mice averaged a volume of 35 mm³ (Increase P<0.05 versus baseline) while at the end of two weeks, their volume was 124 mm³ (P<0.001 versus volume of tumors one week previously and versus their volume at baseline). Two weeks after the tumors were first palpable; they had grown 69-fold (FIG. 8). To determine how aggressively this human pancreatic adenocarcinoma grows in athymic mice, 30 untreated mice had tumor volume measured daily for eight weeks. The tumor volume increased 172-fold in three weeks and was almost 300-fold increased four weeks after the tumor first became palpable (FIG. 8). After two months, the volume of the adenocarcinomas was 1306-fold greater than when the tumors first became palpable (FIG. 8).

Vessel Dilator Completely Stops Growth of Large Volume Adenocarcinomas In Vivo

In the first series of experiments with the cardiovascular peptide hormones, the adenocarcinomas were allowed to grow to a large volume before the experimental protocol was begun to mimic what occurs in humans, i.e., the pancreatic adenocarcinoma in humans are usually large before they are discovered. Thus, these tumors were allowed to consolidate to 8 mm \times 5.4 mm, volume=118 mm³ average, before the peptide hormone infusions began. Vessel dilator when infused for 14 days via the subcutaneous osmotic infusion pump at a concentration of 139 ng/min/kg of body weight stopped all growth of the human adenocarcinomas (and decreased their tumor volume by 8%, n=14; P<0.0001 compared to untreated animals; FIG. 3). At the same time in animals given a saline infusion, the adenocarcinomas continued to grow with a 20-fold increase in tumor volume in the first week and their tumor volume was 69-fold greater at the end of the second week. (The adenocarcinomas grew at a similar rate in the saline-infused athymic mice as in another control group of athymic mice who did not have any infusion). During the two weeks of the vessel dilator infusion, the inhibition of growth of the adenocarcinomas (no increase in volume) was significant at P<0.001 when com-

pared to the placebo (saline) treated adenocarcinomas whose volume increased 69-fold (FIG. 3).

No Side Effects or Cytotoxicity to Normal Tissues

When the vessel dilator infusion ceased, the human adenocarcinomas began to grow (e.g., increase in tumor volume) again. There was no evidence of cytotoxicity to any of the normal tissues during the infusion of vessel dilator. The animals were energetic, healthy appearing and gained weight at a rate comparable to healthy animals. Dose-response studies revealed that at concentrations as low as 1.7 ng/min/20 gram mouse that vessel dilator could completely stop the growth of the human pancreatic adenocarcinomas but at this concentration there was not any decrease in the volume of the tumor by vessel dilator. These experiments demonstrate that vessel dilator can completely inhibit the growth of an aggressively growing cancer, even when the cancer has a very large volume when first treated.

Four Peptide Hormones Inhibit Growth of Human Adenocarcinomas with Decrease in Tumor Volume Secondary to Three of the Cardiovascular Hormones

After this information was obtained, the second group of experiments were designed to answer the question whether one or more of the four peptide hormones could decrease the size of the human adenocarcinomas growing in the athymic mice if a larger dose (i.e., 10-fold increase) of the respective peptide hormones was given for a longer period of time (i.e., one month) to adenocarcinomas that were smaller when treatment with the respective peptide hormones began. After one week of vessel dilator at 1.4 $\mu\text{g/kg}$ body weight/min (i.e., 28 ng/min/per 20 gram mouse), the human adenocarcinomas decreased their tumor volume by 49% ($P<0.01$) (FIG. 4). Long acting natriuretic peptide at the same concentration decreased the tumor volume of the adenocarcinomas by 28% ($P<0.05$) (FIG. 4). Kaliuretic peptide, at the same concentration, decreased the tumor volume of the adenocarcinomas by 11% ($P<0.05$) after the first week of its infusion (FIG. 4). Thus, these three peptide hormones not only stopped the growth of the cancers but also decreased the cancer's tumor volume. Atrial natriuretic peptide (ANP) slowed the growth of the adenocarcinomas with the tumor volume increasing 109% compared to a 2000%-fold increase in tumor volume in placebo-treated animals during the same time period (FIG. 5).

Increase in Tumor Volume after First Week of Respective Peptide Hormone Infusions

At the end of the second week of these respective peptide hormone four-week infusions, there were cancers in each of the four peptide hormone-treated groups that had no increase in their tumor volume. The overall trend in each group, however, was an increase in tumor volume approximately 2-fold (FIG. 6). At the same time, the volume of the adenocarcinomas in the placebo-treated animals increased from a 20-fold increase at end of the first week after they became palpable to 69-fold increase in tumor volume at end of the second week after they became palpable. During the third and fourth week of treatment with vessel dilator, LANP, kaliuretic peptide and ANP, a doubling in the volume of tumors occurred in each week (FIG. 6). This doubling in the volume of the tumors continued in the week after the respective infusion ceased, i.e., the end of the fifth week versus the end of the infusions after the fourth week (FIG. 6).

Cyclic GMP Inhibits the Growth of the Adenocarcinomas

With respect to the mechanism of these peptide hormones' tumor growth suppressing effects in vivo, each of these peptide hormones have been shown by the inventor to inhibit DNA synthesis 83% or greater in these human

pancreatic adenocarcinoma cells but they do not appear to affect apoptosis. One of the known intracellular messengers of these peptide hormones, i.e., cyclic GMP inhibits DNA synthesis in these cancer cells 51%. The other known mediator of some of these peptide hormones effects, i.e., prostaglandin E2 did not have any significant effect on DNA synthesis in these cancer cells. Since cyclic GMP inhibits DNA synthesis in the human pancreatic adenocarcinomas of this investigation, the cell permeable analog of cyclic GMP i.e., 8-bromo-cyclic GMP was investigated in the present investigation to determine if it could decrease the tumor volume of the human adenocarcinomas in vivo. In the in vitro experiments, 5 mM of cyclic GMP caused the maximal inhibition of DNA synthesis in the human pancreatic adenocarcinoma cells.

Thus, 5 mM/min/kg of body weight was chosen as the infusion dose of cyclic GMP for two weeks. After a one-week infusion of cyclic GMP the volume of the human pancreatic adenocarcinomas cancers increased only 0.4 mm^3 (i.e., 9% increase in tumor volume versus 2000% increase in tumor volume in placebo-treated animals, $P<0.01$, $n=5$ (FIG. 7). After two weeks of cyclic GMP infusion, the volume of the human pancreatic adenocarcinomas was 16.8 mm^3 (FIG. 7) i.e., a 3.9-fold increase in volume from baseline versus a 69-fold increase in volume of placebo-treated human adenocarcinomas.

Vessel dilator, long acting natriuretic peptide (LANP) and kaliuretic peptide completely inhibited the growth of human pancreatic adenocarcinomas and decreased their tumor volume during a one-week infusion while there was simultaneously a marked growth (20-fold increase in tumor volume; $P<0.001$) of these adenocarcinomas in the placebo treated athymic mice. Atrial natriuretic peptide (ANP) also had growth inhibiting properties during a one-week infusion but its growth inhibiting property was not as significant as the other three peptide hormones, i.e., there was no decrease in tumor volume with ANP treatment. The ability to inhibit the growth of human pancreatic adenocarcinomas in vivo mimicked the pattern of their growth inhibitory properties in vitro where ANP was also the least potent in decreasing the number of human pancreatic adenocarcinoma cells and the least potent in inhibiting DNA synthesis in these cancer cells. Vessel dilator, LANP, kaliuretic peptide, and ANP, each at 1 decreased the number of human pancreatic adenocarcinoma cells in culture by 65% ($P<0.001$), 47% ($P<0.01$), 37% ($P<0.05$) and 34% ($P<0.05$) respectively, within 24 hours. In the present in vivo investigation a quantitative decrease in cell number within the tumors was not discernable, but after one week the tumor volume decreased by 49%, 28%, and 11% secondary to vessel dilator, long acting natriuretic peptide, and kaliuretic peptide, respectively. During this same time period in the adenocarcinomas treated with ANP their tumor volume increased 109% (versus 2000% increase in volume in placebo treated tumors). Thus, the ability of these cardiovascular hormones to decrease the tumor volume of these cancers in vivo paralleled their ability to decrease the number of cancer cells in vitro with vessel dilator>LANP>kaliuretic peptide>ANP.

When the in vivo experiments with each of the peptide hormones were continued for four weeks, each of the four peptide hormones had a decreased ability to inhibit the growth of these tumors with passage of time. Tumors increased in volume with at least doubling in volume with the passing of each week, i.e., at four weeks of the infusion the tumors had 2-fold or greater increase in volume than at one week and had at least 2-fold larger volume at the end of the third week versus the second week with a similar

doubling in volume occurring in the fourth week versus the third week of the infusion (FIG. 6). This doubling in volume of the adenocarcinomas continued in the after the respective infusions ceased, i.e., the end of the fifth week versus the end of the infusions after the fourth week. There are several possible reasons for these findings. First, these peptide hormones were exposed to body temperature for four weeks with the body temperature of these mice ranging from 97.5° F. to 100° F. Heat is well-known to degrade peptide hormones. With being exposed to a temperature of 100° F. for more than a week, it is possible that this temperature degraded these peptide hormones causing them to lose their biologic effects. A second possibility is that these peptide hormones simply being in solution (i.e. 0.9% saline) for more than a week lose their biologic activity. The combination of being in a solution at a temperature of 100° F. for over a week would appear to be a viable possibility for the four week infusion findings of the present investigation. Hormones simply being in solution (i.e., 0.9% saline) for more than a week lose their biologic activity. The combination of being in a solution at a temperature of 100° F. for over a week would appear to be a viable possibility for the four-week infusion findings of the present investigation. A preliminary investigation of human breast carcinomas in athymic mice suggests that these two reasons probably are the cause as when the pumps are changed weekly, the breast cancers disappear after three weeks (Vesely D L, unpublished observation).

A third possibility for these peptide hormones having very potent growth inhibiting effects on adenocarcinomas in vivo for one week and then their effects diminishing with time is that the adenocarcinomas may have mutated to become unresponsive to the peptide hormones. One of the first steps in the mechanism of action of peptide hormones is binding to their specific receptors. The human pancreatic adenocarcinomas of this investigation have ANP receptors present. A mutation of a receptor for a peptide hormone could cause the tissue or cancer with this receptor to no longer respond to the peptide hormone. This would appear to be an unlikely cause of the findings of the present investigation as these four peptide hormones each have separate receptors. Since the response to all four hormones diminished with time, four different mutations would have to occur in one week to mutate four different receptors, which would be highly unlikely. There could, however, be a single post-receptor mutation that could effect the biologic activity of all four peptide hormones since they have a similar mechanism of action mediated by cyclic GMP after binding to their respective receptors. Since cyclic GMP was found in the present investigation to mediate most of these peptide hormones' anticancer effects and these peptide hormones increase the concentration of cyclic GMP by enhancing the activity of the enzyme guanylate cyclase which forms cyclic GMP rather than inhibiting the enzyme(s) which breaks down cyclic GMP, i.e., cyclic GMP phosphodiesterases, the most likely site for a mutation would be in the enzyme guanylate cyclase. If guanylate cyclase became mutated within the adenocarcinomas, these peptide hormones would no longer be able to increase cyclic GMP within the tumor cells and they would lose their anticancer effects. This mutation, however, would have to occur after only one week to explain the findings of the present investigation.

It should be pointed out that there was no cytotoxicity in the present investigation to normal tissues with infusion of these peptide hormones. This is similar to what has been found previously with infusion of these peptide hormones in animals and humans with concentrations similar to that

utilized in the present investigation. There has never been any evidence of cytotoxicity or bone marrow suppression with these peptide hormones and/or cyclic GMP. The only known side effect of these peptide hormones is hypotension and this side effect has been seen only with ANP of these four peptide hormones. With infusion of the other three hormones (i.e., vessel dilator, LANP and kaliuretic peptide), which increase cyclic GMP in over 50 healthy humans and in over 50 individuals with congestive heart failure, there has not been a single side effect. Specifically, there has never been an episode of hypotension with infusion of vessel dilator, long acting natriuretic peptide, or kaliuretic peptide in humans or animals. The tumor-bearing athymic mice of the present investigation were energetic and well groomed and did not appear to have any adverse effect from the respective peptide hormone and/or cyclic GMP infusions.

With respect to the mechanism of action of the decrease in tumor volume secondary to vessel dilator, LANP and kaliuretic peptide in the present investigation and the slowing of growth of the human pancreatic adenocarcinomas by all four peptide hormones, it is known that all four of these peptide hormones decrease the number of human pancreatic cancer cells 34% to 65% within 24 hours in vitro mediated by inhibiting DNA synthesis 83% or greater. Vessel dilator, LANP, kaliuretic peptide, and ANP, when incubated with these human pancreatic adenocarcinoma cells each at their 1 μ M concentration for 24 hours inhibit DNA synthesis in these cancer cells by 91%, 84%, 86% and 83%, respectively. These peptides' cancer growth inhibiting mechanism of action appears to be mainly through inhibiting DNA synthesis as they appear to have little effect on enhancing apoptosis, i.e., programmed cell death of adenocarcinomas. This inhibition of DNA synthesis appears mediated in part by the intracellular mediator cyclic GMP as cyclic GMP inhibits DNA synthesis in these adenocarcinoma cells by 51%. In the present investigation cyclic GMP given via osmotic pump markedly decreased the growth of the human pancreatic adenocarcinomas in the first week with only a 9% increase in tumor volume versus a 109% increase with ANP and a 2000% increase in tumor volume in the untreated adenocarcinomas. This knowledge shows that cyclic GMP mediates all of ANP's tumor growth inhibiting effects. This data would further suggest that cyclic GMP mediates the majority of vessel dilator, LANP and kaliuretic peptide's ability to decrease tumor volume and inhibit the growth of adenocarcinomas.

Accordingly, the present investigation shows the utility of these peptide hormones and/or cyclic GMP for treating human pancreatic adenocarcinomas in that three of these peptide hormones completely inhibited the growth of the adenocarcinomas (and decreased their tumor volume) during the first week of their infusion while cyclic GMP inhibited 95% of the pancreatic adenocarcinoma growth. This study shows that these peptide hormones will need to be given weekly rather than continuously for a month to be effective (i.e., the present investigation suggests that one week is the ideal dosing compared to 2, 3, or 4 week continuous infusions of these hormones). Since these peptide hormones anti-tumor effects are mainly through inhibiting DNA synthesis, combining them with agents that mainly enhance apoptosis may be a valuable addition to treating pancreatic adenocarcinomas which now have a median survival of only four months.

It will be seen that the objects set forth above, and those made apparent from the foregoing description, are efficiently attained and since certain changes may be made in the above construction without departing from the scope of the inven-

15

tion, it is intended that all matters contained in the foregoing description or shown in the accompanying drawings shall be interpreted as illustrative and not in a limiting sense.

It is also to be understood that the following claims are intended to cover all of the generic and specific features of the invention herein described, and all statements of the scope of the invention which, as a matter of language, might be said to fall there between.

What is claimed is:

1. A method of inhibiting the growth of a cancer cell in vivo comprising the steps of: contacting at least one target cancer cell in vivo with an effective amount of a cell permeable analog of cyclic guanosine monophosphate (GMP), or a composition comprising the cell permeable analog of cyclic GMP; and contacting the at least one target cancer cell in vivo with an effective amount of at least one peptide hormone selected from the group consisting of long acting natriuretic peptide, vessel dilator peptide, and kaliuretic peptide, or a composition comprising the at least one peptide hormone, whereby the growth of the at least one target cancer cell is inhibited, and wherein the target cancer cell is a sarcoma, small-cell carcinoma or squamous cell carcinoma.

2. The method of claim 1 wherein the effective amount of the combination of the cell permeable analog of cyclic GMP and the peptide hormone is administered in vivo to a person or animal.

3. A method of inhibiting the growth of a cancer cell comprising the steps of: contacting at least one target cancer cell with an effective amount of a cell permeable analog of cyclic GMP, or a composition comprising the cell permeable analog of cyclic GMP; and contacting the at least one target cancer cell with an effective amount of a peptide hormone derived from the atrial natriuretic peptide prohormone, wherein the peptide hormone derived from the atrial natriuretic peptide prohormone is selected from the group consisting of long acting natriuretic peptide, vessel dilator peptide, and kaliuretic peptide, or a composition comprising the peptide hormone, and wherein the target cancer cell is selected from the group consisting of sarcomas, small cell carcinoma and squamous cell carcinoma, and the effective amount of peptide hormone is administered in vivo to a person or animal.

4. A method of inhibiting the growth of a cancer cell comprising the steps of: contacting at least one target cancer cell with an effective amount of a cell permeable analog of cyclic GMP, or a composition comprising the cell permeable analog of cyclic GMP; and contacting the at least one target cell with an effective amount of a combination of peptide hormones derived from the atrial natriuretic peptide prohormone, or a composition comprising the combination of peptide hormones, wherein the combination of peptide hormones derived from the atrial natriuretic peptide prohormone is selected from the group consisting of long acting natriuretic peptide, vessel dilator peptide, and kaliuretic peptide, and wherein the target cancer cell is chosen from the

16

group consisting of small cell carcinoma and squamous cell carcinoma, and the effective amount of the combination of peptide hormones is administered in vivo to a person or animal.

5. The method of claim 1 wherein the cell permeable analog of cyclic GMP is 8-bromo-cyclic GMP.

6. The method of claim 3 wherein the cell permeable analog of cyclic GMP is 8-bromo-cyclic GMP.

7. The method of claim 4 wherein the cell permeable analog of cyclic GMP is 8-bromo-cyclic GMP.

8. The method of claim 1 wherein the target cancer cell is a human small cell carcinoma, or a human squamous cell carcinoma.

9. The method of claim 3 wherein the target cancer cell is a human small cell carcinoma, or a human squamous cell carcinoma.

10. The method of claim 4 wherein the target cancer cell is a human small cell carcinoma, or a human squamous cell carcinoma.

11. The method of claim 2 wherein the peptide hormone is administered intravenously, intradermally, subcutaneously, orally, inhalationally, transdermally, or transmucosally to the person or animal.

12. The method of claim 3 wherein the peptide hormone is administered intravenously, intradermally, subcutaneously, orally, inhalationally, transdermally, or transmucosally to the person or animal.

13. The method of claim 4 wherein the combination of peptide hormones is administered intravenously, intradermally, subcutaneously, orally, inhalationally, transdermally, or transmucosally to the person or animal.

14. The method of claim 1 wherein the at least one target cancer cell is contacted with the peptide hormone intravenously, intradermally, subcutaneously, orally, inhalationally, transdermally, or transmucosally.

15. The method according to claim 1 wherein the at least one peptide hormone is long acting natriuretic peptide.

16. The method according to claim 1 wherein the at least one peptide hormone is vessel dilator peptide.

17. The method according to claim 1 wherein the at least one peptide hormone is kaliuretic peptide.

18. The method according to claim 3 wherein the peptide hormone is long acting natriuretic peptide.

19. The method according to claim 3 wherein the peptide hormone is vessel dilator peptide.

20. The method according to claim 3 wherein the peptide hormone is kaliuretic peptide.

21. The method according to claim 4 wherein the combination of peptide hormones comprises long acting natriuretic peptide.

22. The method according to claim 4 wherein the combination of peptide hormones comprises vessel dilator peptide.

23. The method according to claim 4 wherein the combination of peptide hormones comprises kaliuretic peptide.

* * * * *