

4-3-1975

The Oracle, April 3, 1975

Sandra Wright

Follow this and additional works at: https://digitalcommons.usf.edu/usf_oracle_spc

Recommended Citation

Wright, Sandra, "The Oracle, April 3, 1975" (1975). *The Oracle (Print Editions)*. 695.
https://digitalcommons.usf.edu/usf_oracle_spc/695

This Book is brought to you for free and open access by the USF Oracle Archive at Digital Commons @ University of South Florida. It has been accepted for inclusion in The Oracle (Print Editions) by an authorized administrator of Digital Commons @ University of South Florida. For more information, please contact digitalcommons@usf.edu.

Adviser's council created

BY DAVID RUSS
Oracle Staff Writer

A USF council of advisers consisting of community leaders in the Tampa Bay area has been created "to broaden the base of public involvement" in the State University System, Board of Regents Chancellor-Designate E. T. York said.

Similar councils have been created at each of the other eight state universities in an attempt to increase the "social, cultural, and business inputs" for the process of higher public education in Florida, he said.

"The council should provide a

way to reflect the public higher educational needs of the community and the state, not now being met by existing programs," USF President Cecil Mackey said at the council's first meeting on March 17.

TAMPA ATTORNEY Reece Smith, who heads USF's council of advisers, said he is pleased to be working on the council but he is not yet sure of the specific duties and responsibilities that will be assigned to the group. "It's new to me," he said.

The main responsibility of the council is to advise Mackey on the needs and problems at USF

but the group "will be called upon from time to time to counsel the staff and members of the Board of Regents" on statewide issues, Smith said.

York said he had the idea for councils about four months ago and asked the nine state university presidents to recommend membership lists for the groups.

THE COUNCIL memberships provide a cross-section of the leaders in each of the universities' areas of service, York said.

The first job of the councils will be to familiarize themselves with

the processes and problems of the state universities, he said. They then will be able to provide valuable suggestions as to how the problems can be solved, he said.

York said for example, the councils will be able to study the educational needs in a certain profession and suggest ways in which these needs can be met.

The councils will also be able to represent the needs of the public higher education system to the communities and the legislature, he said.

USF ALREADY HAS a community input subcommittee for

Mackey's task force on missions and goals, which is created about once every ten years. However, York said the council of advisers, a permanent body, is different because it will address itself to specific problems at USF.

The full councils should meet "three or four times a year" but ad hoc committees will be meeting all year long, York said.

Representatives from each of the nine councils will meet on specific state-wide issues and "collectively represent the total State University System," he said.

thursday's

ORACLE

April 3 1975

Vol. 10 No. 3

20 pages



Senate rejects BOR proposals

BY CHRISTY BARBEE
Oracle Staff Writer

"Ill advised," "ill conceived," and "dumb" were some of the terms faculty senate members assigned yesterday to Board of Regents proposals for mandatory summer enrollment.

The senate passed a resolution rejecting the proposals, noting that the "root" of the summer funding problem is in the four-quarter budgeting system for universities.

State universities shifted this year to a four-quarter funding system that legislators intended to make more efficient use of university buildings and resources. Theoretically, according to Assistant Vice President for Academic Affairs Joe Carter, the university system would operate more efficiently "if you don't have peaks and valleys in demand (enrollment)."

Equalizing enrollment would require greater attendance during the summer.

THREE OPTIONS to be considered by the Regents would be:

1. Prohibit a student from attending two consecutive fall quarters without having been enrolled for at least one of the summer terms during that time.

2. Require entering, transferred or readmitted students to attend at least one summer quarter before graduation. Students attending a university for more than two years would be required to attend a summer term for every two years.

3. Limit fall quarter enrollment to the fall 1974 level until enrollment in all other quarters reached 90 per cent of that level.

"THESE PROPOSALS are the dumbest," said Senator Roy Francis. "I don't want to be a party to making any sense of them."

He noted that the proposals made no mention of how many credit hours a student would have to take.

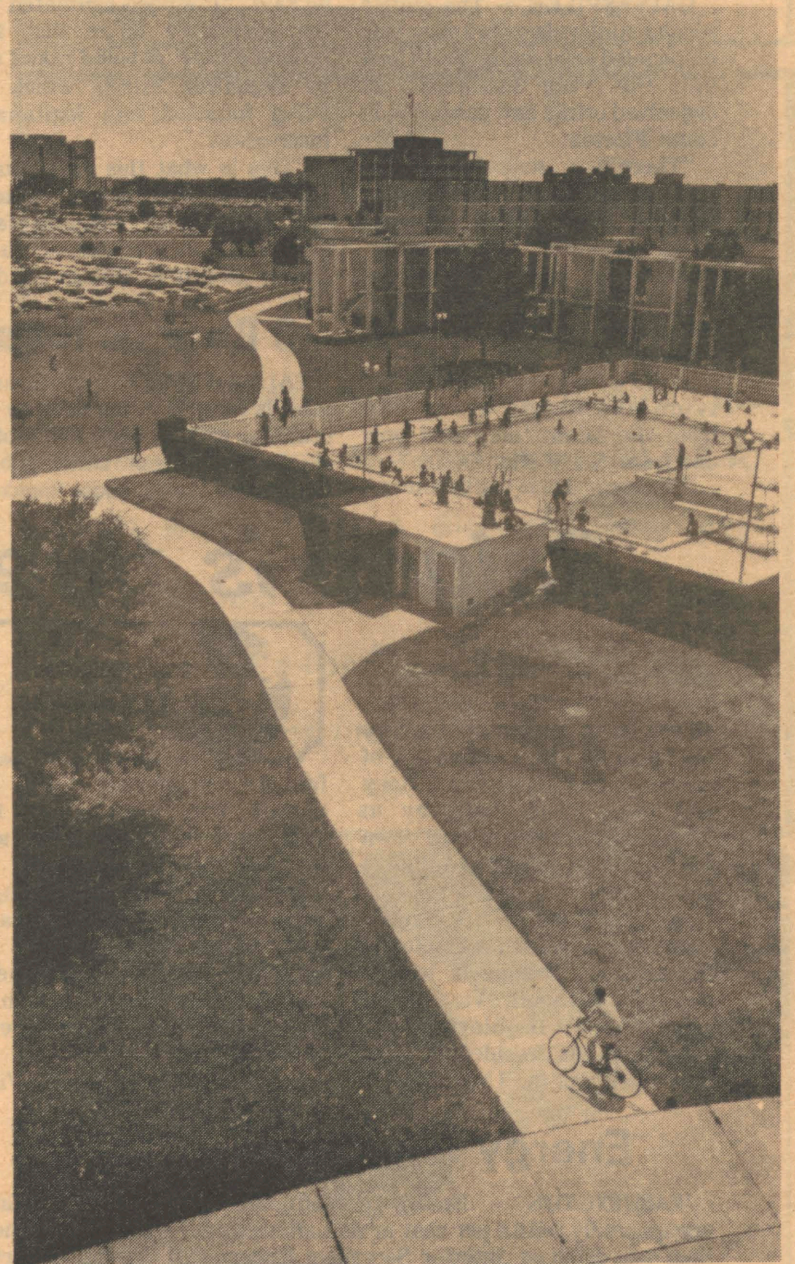
The Senate rejected two amendments to the resolution including one that would have offered a compromise — support for limited mandatory enrollment if the legislature would fund the summer quarter adequately.

Opponents objected that any mandatory enrollment would constitute coercion of the students.

The senate also refused an amendment that would have requested the BOR to postpone action on the proposals until all universities can come up with better alternatives for encouraging summer enrollment.

ONE SENATOR SAID the burden of the decision should be placed on the legislature.

Continued on page 20



Oracle photo by Gabe Puniska

Spring weather

At Beta pool university students gather trying to escape the sticky spring weather.



Oracle photo by Eric Mencher

Print sale

Prints will be on sale at the UC mall tomorrow with 10 per cent of the proceeds going to the Concerned Democrats.

Faculty scholarship fund exceeds goal by \$1,000

BY DIANE HUBBARD
Oracle Staff Writer

Personal efforts by faculty-staff fund committee members spell good news for the fund's scholarship recipients this year.

Contributions by about 140 faculty and staff members have already taken the fund \$1,000 over its projected \$2,500 aim, and Dr. James Ray, chairman of the fund, hopes additional contributions before the deadline tomorrow will bring the total to over \$4,000.

The fund will provide scholarships for nine upper level students next year, one from each college including medicine.

"In spite of the fact that times are hard and money is close, you

still want to see some reward for academic excellence," Ray said.

TERRY EDMONSON, director of university developments, said this year's "tremendous response" is a reflection of Ray's leadership of the committee.

The committee consists of one faculty member from each college, responsible for collecting contributions from their college, plus two representatives from student affairs and one from physical plant.

The committee opted for solicitations on a one-to-one basis instead of the originally-planned telephone campaign. Ray said this contributed to the fund's success. Last year a mail

campaign was used.

"As much as anything, the good results have been the result of the enthusiasm of the individual members of the committee," Ray said.

Before the drive officially opened, Ray collected \$1,800 from staff members, equalling the approximate total collected during last year's entire campaign. "This opening phase was highly successful in catching the interest of the deans and administrators," Ray said.

SCHOLARSHIPS WILL be awarded solely on the basis of academic excellence. Although entering freshmen received the awards last year, Ray said this

Continued on page 20

Miami physicians vote to strike

MIAMI — A group of Dade County physicians, willing to go on strike later this month to protest soaring malpractice insurance costs, will take their grievances before legislators in Tallahassee next week.

About 150 physicians attending a meeting of the 2,700-member Dade County Medical Association Tuesday night voted to strike April 15 unless the state legislature acts to provide relief from the high cost of malpractice insurance, which has doubled

since the first of the year and is expected to go up another 30 per cent in mid-April.

The doctors, who said they would only handle emergency cases after April 15, also voted to travel to Tallahassee on April 9, a day after the legislature opens its 1975 session, to demonstrate in front of the state capitol.

The limited strike vote drew criticism yesterday from House Commerce Committee Chairman John Forbes and some senior citizens' groups concerned that

the elderly will be most affected by a walkout.

Rep. John Forbes, D-Jacksonville, said the State Board of Medical Examiners could stop the walkout by threatening to revoke the doctor's licenses. But Board Executive Secretary George Palmer said there is nothing in the medical practices act that requires a physician to practice.

"It's a matter between him and

his conscience," Dr. Palmer said. He said he expects it will be discussed at the Board's meeting in Orlando Saturday.

Max Friedson, president of the Congress of Senior Citizens Organizations of Florida, said that, for the elderly, "this is the most scary thing that we've ever" had to face.

The vote to strike was 10-1

among the 150 physicians attending the association's meeting. Only a handful of doctors stood when those opposed to the walkout were asked to rise for a standing vote.

Association President, Dr. Pedro J. Greer, who opposed the strike resolution said he felt the measure "was voted on under great emotional stress."

Big crime probed

GAINESVILLE — The state's second statewide grand jury was empaneled here yesterday to look into the "big business" of organized crime and gambling in South Florida.

"There's a serious problem with gambling and organized crime," said Alachua County State Attorney Eugene Whitworth, who was appointed by Gov. Reubin Askew last November to head up the investigation.

Seven women and 11 men were sworn in on the jury, four of them from the Miami area and only one from North Florida.

"We know this is big business,"

he said. "It's been estimated by the governor's office that \$50 million a year is being raked off by organized crime, which is being funneled into legitimate businesses.

"This is what this grand jury hopes to be able to track." Askew ordered the investigation last Nov. 13 at the request of Dade County Sheriff E. Wilson Purdy.

3 R's or no funds

TALLAHASSEE — Grade schools must give top priority to reading, writing and arithmetic or lose state funds under a bill filed yesterday by House Speaker



Don Tucker and Education Chairman Richard Hodes.

The bill calls for increasing the number of paid and volunteer teacher aides in the primary grades to help teachers meet a requirement of at least 630 hours of instruction in the three basic skills each school year.

Schools which do not do it will earn fewer state dollars, based on a complicated formula.

"Basic Skills Development Act" requires counties to offer inservice training for teachers in the use of aides and volunteers, and training for the aides.

Priestes testifies

TAMPA — Miami area builder John Priestes testified under cross examination yesterday that he was told by fund raiser Larry Williams in early 1973 that former Sen. Edward J. Gurney, R-Fla., knew nothing about the slush fund contributions Williams had collected from him.

Priestes, who testified Tuesday to having paid \$80,000 to Williams and to former Federal Housing

Administration official William Pelski, said he went to see Williams in Orlando after he learned the Federal Bureau of Investigation was looking into his activities.

Gurney's attorney, C. Harris Dittmar, asked if Williams told him he would be in worse trouble if he talked to Gurney and Priestes said, "Yes sir."

Food prices drop

Anyone willing to make his own hamburgers and french fries may be able to save money this month. Beef and potatoes are in oversupply and retail prices are dropping slowly, say marketing specialists at the U.S. Department of Agriculture.

The outlook for vegetarians is even better. The USDA food marketing alert for April also reported an oversupply of dry beans and split peas and plentiful supplies of at least 12 other staples. Based on recent prices, the 20 grams of protein in dry beans and split peas cost only seven cents retail, compared with the same amount of protein in ground beef at 24 cents, the USDA said.

For burger lovers, ground chuck was a good buy, ranging between 89 and 99 cents a pound.

Saigon is threatened

SAIGON — Advancing Communist forces threatened Saigon from two directions yesterday. To the north government troops and most civilians pulled out of the coastal cities of Phan Rang and Phan Thiet yesterday as frightened refugees poured down Highway 1 headed south, military sources said.

South Vietnam's Senate unanimously passed a resolution demanding a change in leadership of the South Vietnamese government. It blamed the government of President Nguyen Van Thieu and the United States



for the staggering series of defeats that have given the Communists more than two-thirds of the country.

In Paris, the Viet Cong's provisional revolutionary government made it clear its military forces will press ahead with their offensive and march on Saigon unless Thieu's regime is overthrown.

In Washington, South Viet-

nam's Ambassador said "it is safer to be an ally of the Communists and...fatal to be an ally of the United States."

Energy use down in 1974

WASHINGTON — Energy consumption in the United States unexpectedly fell 2.2 per cent in 1974 after climbing steadily for more than two decades, Interior Secretary Rogers C.B. Morton reported yesterday.

"This is the first decrease since 1952," Morton said. "I am delighted...I hope we are seeing the start of a new trend."

If the reversal is a trend, he said, it means conservation efforts can effectively supplement President Ford's drive to increase U.S. energy production and lower reliance on foreign oil supplies.

Figures compiled by the Interior Department's Bureau of Mines showed the biggest drop in a single area — 3.4 per cent — was for transportation. Jet fuel use declined 5.9 per cent from 1973, while gasoline use fell off by 2.1 per cent. Consumption was lower for all energy sources except utility hydropower and nuclear power, the figures showed.

Defense: 'Connally got no bribe'

WASHINGTON — A defense lawyer said yesterday former Treasury Secretary John B. Connally never received a bribe and the man who accused him of doing so actually kept the \$10,000 for himself.

Chief Defense Lawyer Edward Bennett Williams accused Jake Jacobsen, a former White House legislative counsel and the prosecution's star witness, of keeping the alleged bribe of \$10,000 for himself and then scheming to place blame on Connally.

The Oracle is the official student-edited newspaper of the University of South Florida and is published four times weekly, Tuesday through Friday, during the academic year period September through mid-June; twice during the academic year period mid-June through August, by the University of South Florida, 4202 Fowler Ave., Tampa, Fla. 33620.

Opinions expressed in the Oracle are those of the editors or of the writer and not those of the University of South Florida. Address correspondence to the Oracle, LET 472, Tampa, Fla., 33620.

Second class postage paid at Tampa, Fla. The Oracle reserves the right to regulate the typographical tone of all advertisements and revise or turn away copy it considers objectionable.

Programs, activities and facilities of the University of South Florida are available to all on a non-discriminatory basis, without regard to race, color, religion, sex, age or national origin. The University is an affirmative action Equal Opportunity Employer.

BEER DRINKER'S QUICK QUIZ

Just to kill a minute or two, why don't you match your own beer-drinking habits and preferences against those of the Budweiser Brewmaster. While you're taking the test, it might be a good idea to cover up the answers with a cold can or two of the King of Beers.

- When you do use a glass, do you ease the beer down the side? ☐ Or do you pour it down the middle to get a nice head of foam? ☐
- How much foam do you like on a glass of draught beer? None at all ☐ One inch ☐ One and a half to two inches ☐
- Do you like to drink your beer in little sips? ☐ Big swallows? ☐ Something in between? ☐
- Which do you like best?
Canned beer ☐ Bottled beer ☐ Draught beer ☐
- Which beer is brewed by "exclusive Beechwood Ageing with natural carbonation to produce a better taste and a smoother, more drinkable beer?" Budweiser ☐ Some other brand ☐
- When you say "Budweiser," do you say it... often? ☐ ...eagerly? ☐ ...loudly? ☐ ...gladly? ☐

ANSWERS

- Right down the middle
- 1 1/2 to 2 inches
- Big swallows
- Any of these, as long as it's Budweiser
- Only Budweiser
- All answers are acceptable

ANHEUSER-BUSCH, INC. • ST. LOUIS

Buses add stops

See related editorial, page 4

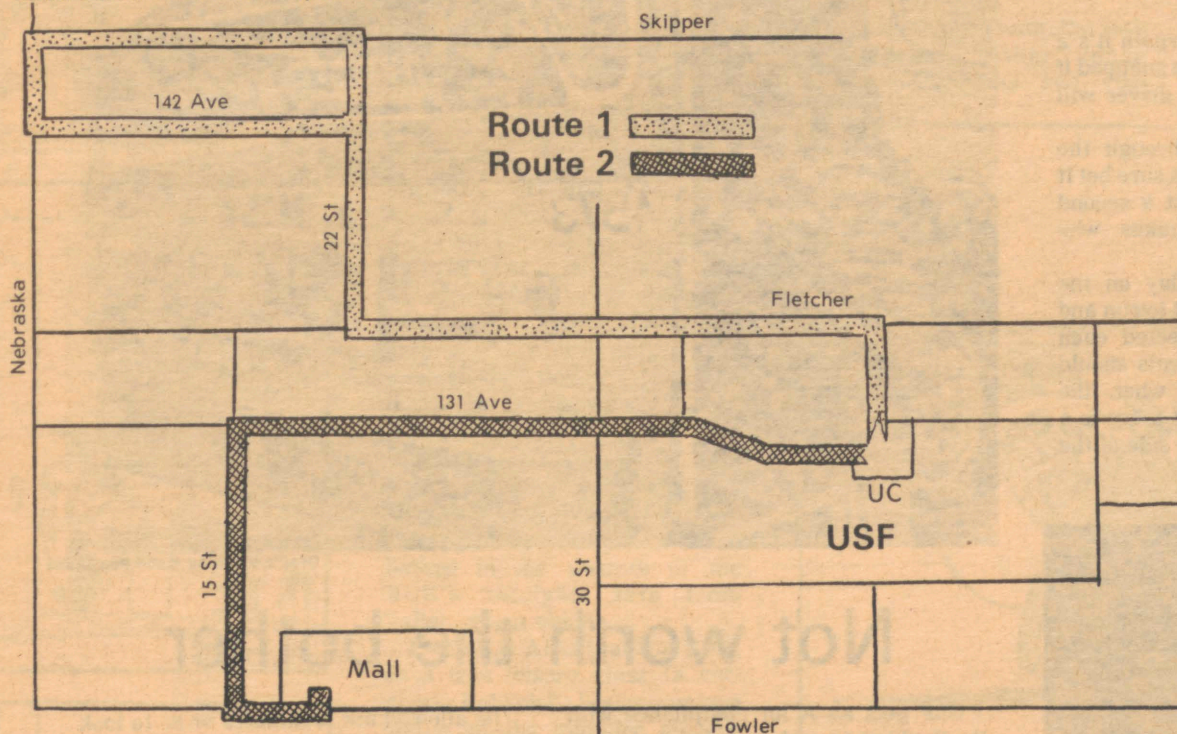
The two shuttle buses serving USF students living in nearby apartments will have its routes changed, effective April 7, according to Traffic Coordinator Otto Meerbott.

Route 1 will run from the UC down Fletcher to 22nd St., then

north to 142nd Ave. From 142nd Ave., the bus will go to Nebraska Ave., and proceed north to Skipper Ave. The bus will then travel east along Skipper to 22nd St., then south on 22nd, and east on Fletcher, returning to the UC.

The Route 2 bus will run from the University Square Mall west

along Fowler Ave. to 15th St. It will then go north along 15th St. to 131st Ave., and east along 131st to the UC. The bus will then return west along 131st Ave. via the same route to the University Square Mall. The route 2 bus will also stop if flagged in addition to stopping at all bus stops.



Mackey OKs faculty plan

President Cecil Mackey has approved the new apportionment plan for the faculty senate, Dr. Frederic Zerla, chairman of the

senate elections committee, said Tuesday.

The apportionment for the 100-member senate is roughly based on one representative for every nine fulltime faculty members.

The colleges of arts & letters, education, natural sciences and social and behavioral sciences each lose one representative under the new plan.

The college of medicine is the big gainer with four additional seats.

ALL OTHER COLLEGES retained their earlier apportionment.

The senate will conduct its annual elections April 14 through 22. Nominations for 37 seats must be submitted to Zerla in PHY 342 by 4 p.m. April 8.

The following is a list of vacancies in each college along with its total number of senate representatives:

ARTS & LETTERS: four 3-year seats, 13 members;

BUSINESS ADMINISTRATION: four 3-year

seats and one 1-year seat, nine members;

EDUCATION: seven 3-year seats, one 2-year seat, 19 members;

ENGINEERING: two 3-year seats, six members;

FINE ARTS: three 3-year seats and one 1-year seat, eight members;

MEDICINE: five 3-year seats, 10 members;

NATURAL SCIENCES: four 3-year seats and one 2-year seat, 15 members;

NURSING: no election, one member;

SOCIAL AND BEHAVIORAL SCIENCES: four 3-year seats, 15 members;

IM hours set

The Instructional Materials Center, EDU 113, will be open 9 a.m. to 6 p.m. MWF and 9 a.m. to 5 p.m. T, TR during Qtr. 3.

The center offers a variety of materials for student use, including books, record albums and art prints.

Department hosts annual gathering

The USF department of anthropology is hosting the Southern Anthropological Society's annual meeting, today through Saturday at the Hilton Hotel in Clearwater Beach.

The anthropological symposium will "address issues pertinent to professional anthropologists working in settings that contrast with traditional academic departments," according to the program which can be obtained in SOC 115.

Topics to be discussed include: anthropology in the south, black population biology, American Indian anthropology, continuity, and change in drug-use patterns.

Inez Brady, a USF undergraduate student who has gained recognition for her "Runaway Mother," will participate in the Symposium on Women, today from 9 a.m. to noon.

Deferment applications available

Veterans can still pick up 60-day deferments of registration fees in the office of veteran's affairs, UC 166 at the Tampa campus, and in SPB 152 at the St. Petersburg campus.

The deadline for filing the application is April 7, or April 25 with a \$25 late fee.

Registration fees will be deferred until June 6.

Morning blackout traps passengers

BY JOSEPH POTTER
Oracle Staff Writer

A small squirrel proved to be more powerful than Tampa Electric Company (TECO) yesterday morning when he ran across a fuse in the TECO power station on Fletcher Avenue near the University Community Hospital.

He tripped a circuit breaker and caused a one-hour power outage for 1,300 customers, including USF. Some students were trapped in a UC elevator, but the University Police (UP) rescued them.

The UP were forced to communicate via hand-held walkie-talkies while the main system was out of power.

Lights were out in the dormitories, and students breakfasting in the Andros and Argos cafeterias ate cold food on paper plates.

"There is no way you can control those squirrels. One did the same thing on our side of the yard not too long ago," said George Chavez, assistant director of physical plant.



Student Government has formed the S.C.A. on campus. Students with valid S.C.A. cards will receive a discount from participating merchants. In tomorrow's Oracle we will print a list of the merchants and the special services they offer.



RIVER RIOT III
USF RIVERFRONT PARK
SUNDAY, APRIL 6 NOON-NIGHT

Music
Barbecue



The Poindexter Band
Rosewater Blue
DIXIE HOBO BAND
Moon Pie
Ja G Band
Feldman - Hanger

Lacrosse
City Championship
2 p.m.

Space available for flea market.
Call Ext. 2637 for information

Sponsored by the University Center

SUNDAY BLOODY SUNDAY



Glenda Jackson — Peter Finch
Murray Head

Fri. & Sat. Apr. 4-5 7:30 & 10p.m.
LET 103 Free with valid ID. Others \$1
A UC-SGP Production

editorials

A dime, a short wait could save 2 buses

Traffic coordinator Otto Meerbott is trying once again to solve one of USF's great incongruities: Thousands of cars jamming intersections and roads at 5 p.m. while two shuttle buses trundle away from the UC with just six passengers enjoying the tinted windows and air conditioning.

For the third or fourth time poor Otto is tracing and retracing routes to entice more students to leave the driving to USF. One of the buses will now cover 142nd Street from Fletcher Avenue and the other will catch the University Square Mall. Hopefully they will also catch more passengers.

The bus ride is such a bargain it's a wonder so few students have snapped it up. It costs a dime and the driver will pick you up anywhere.

This service is funded through the end of summer quarter. It's a sure bet it will then be stopped without a second thought by any budget-maker who notes the pitiful response.

USF is blowing \$200 a day on the service — the buses cost \$224 to run and about \$24 in dimes is collected each day. USF's commuter students should not allow this to happen when the remedy is so simple — all it takes is a dime and a short wait by the side of the road.



Oracle photo by Gabe Puniska

Not worth the bother

USF gets an A for compliance with the Buckley Amendment, but if attitude is computed, the grade drops.

Like most government agencies, the university is not overjoyed with this amendment, which gives every citizen the right to inspect whatever files an agency has on him. If there is something unpleasant in that file, such as a document alleging unpatriotic activities, he may appeal for its removal.

I didn't expect to find any such document in my file. That wasn't the point. I visited records and registration just to see if they would willingly show me what they had about me.

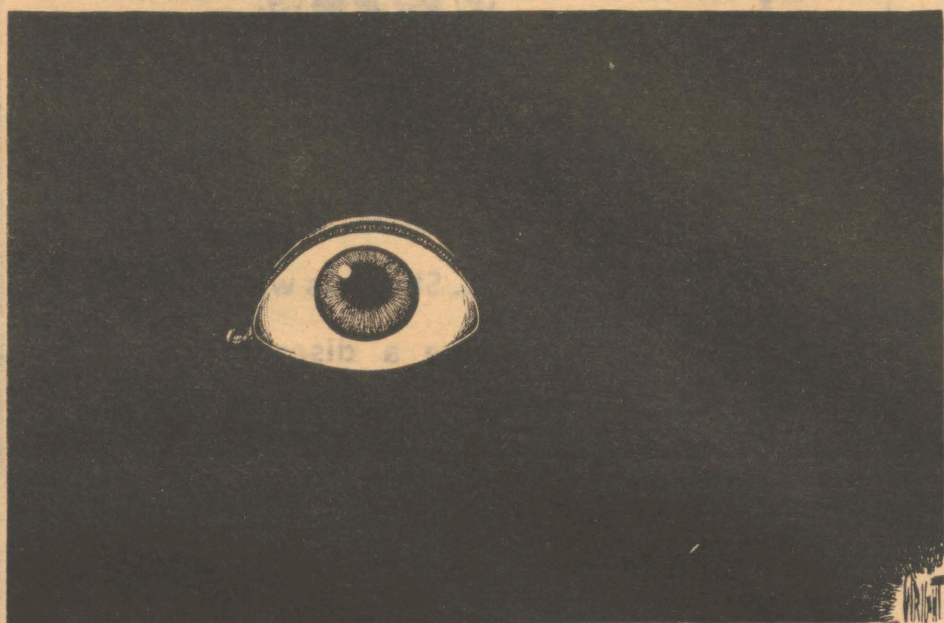
"You're wasting our time," assistant registrar Alfred Crews said when he found I was there only to peruse. "What if every student wanted to do this?" But

he allowed me 15 minutes or so to look through my file.

He was right, of course. If 20,000 students descended upon records and registration to paw through their folders, the staff would go bananas and all other functions would cease.

But students do have the right now to inspect their files. Most students would find no more than I did: CLEP scores, 12th grade placement scores, high school transcripts and a change of address form. The Buckley Amendment is one more battle won in the war against government secrecy. But unless a student has reason to believe there is something heinous lurking in his student file, checking is probably not worth the bother.

— ANDREA HARRIS



"Hi. Just go about your routine. Go to work. Eat your lunch. Talk to a friend. Eat supper. Go to a movie. Go to bed. Your IRS, FBI and CIA want you to enjoy yourself."

Mackey's memo: Quality always

BY CECIL MACKEY
USF President

To the students:

It is a truism that you and I are living and working in a world of rapid change...a period of history characterizable as a time of "future shock." It is also a truism that USF is immune neither to such changes nor to the shocks of the unexpected arrival of the future.

We at USF are, to some extent, apart from the world around us, but to an even greater extent, we are a part of our surroundings and are affected by a number of such external forces at work there — over many of which we have

little or no effective control. The most recent example of change which has set in motion forces beyond our ability to control them is the sudden deterioration of the state's economic position. The result: a "budget crisis" in the State University System generally and at USF, in particular. The financial problems faced by this state, the SUS and USF are real and must be faced squarely, by each of us, like it or not, and they must be faced in such a way that the vital roles of our universities are not so altered as to be lost — in such a way that the quality of our programs is not so affected as to preclude providing properly for the

educational needs of the people we serve.

WITHOUT A QUESTION, the single issue that will affect us most both this year and the next is the availability, or rather the relative unavailability, of funds to operate the university. Our resources are directly related to the funds available to the SUS which, in turn, are directly affected by the amount of general revenue funds available to the state. The general revenue funds are generated by sales taxes, corporate taxes and other revenue-producing taxes and fees levied and collected by the state. Although tourism has been good this year, (up 37 per cent over last year for January, for example), the large volume of dollars usually received by the state from industrial sources (especially the construction industry) is now projected to be much less than what it was expected to be when 1974-75 appropriations were made last year. Therefore, there are fewer resources available from the state for running the SUS — and subsequently, fewer resources for USF.

Thus far, this year, USF has had to return roughly 2.7 per cent of its operating budget to the Board of Regents — even though our enrollment is approximately 6 per cent larger than last year. This budget reduction has meant that we are now serving more students with fewer dollars. To make matters worse, skyrocketing costs for utilities expenses and other operating expenses make our situation even more

severe. Fortunately, thus far, we have been able to minimize the effect of these cuts on the academic areas of the university by making proportionately larger cuts in other areas. State revenue forecasts for the 1975-76 fiscal year (July 1 - June 30) indicate that the situation during the next academic year may be even worse. In anticipation of that likelihood and in light of the governor's austere budget recommendation to the 1975 legislature, a universitywide task force of faculty, staff members and students, along with various standing committees and councils are now implementing a "contingency budget planning process" — an in-depth study of the ways we can make the necessary reductions in the 1975-76 budget.

IT IS IMPORTANT for you to be aware of our continuing commitment to quality programs and to our commitment to maintaining the highest possible caliber of instruction. Nevertheless, it seems apparent that reductions will probably be seen by you in many ways — for instance, in reductions of courses offered and larger class sizes. Moreover, it may result in reductions for some support services — or in some instances, the elimination of certain support services, in the short run — such as shorter hours of operation in university offices and facilities, fewer extracurricular activities, and the like. If this be so, then all of us — students, faculty and staff — will have to adapt accordingly. By

Continued on page 5

ORACLE

ANPA Pacemaker Award 1967, 1969

SDX Mark of
Excellence 1972



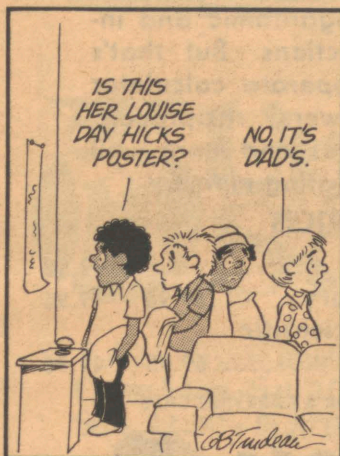
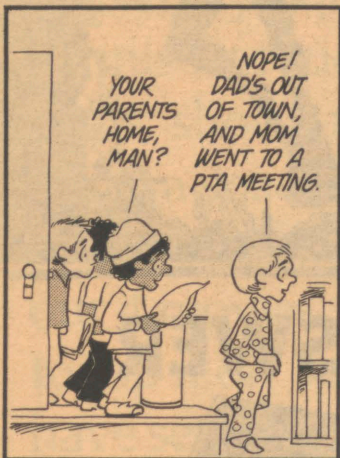
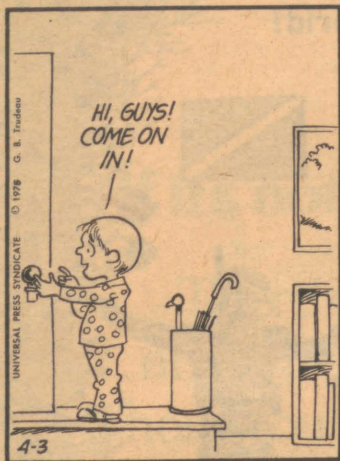
ACP All-American
since 1967

Editor Andrea Harris
Advertising Manager Tom Wallace
Managing Editor Rindy Weatherly
Entertainment Editor Steve Morrison
Sports Editor Jeff Whittle
Layout Editor Beth Garvey
Copy Editor Gary Kimler
Wire Editor Tony Briggs

Illustration Editor Terry Kirkpatrick
Photo Editor Gabe Puniska
Feature Editor Ilene Jacobs
News Editor Steve Northcutt
Adviser Leo Stalnaker
Production Manager Joe McKenzie
Compositor Leslie Crutcher
News Phones 974-2619, 2842, 2398

DEADLINES: General news 2 p.m. daily for following day issue. Advertising (with proof) Thursday noon for Tuesday, Monday noon for Thursday. Deadlines extended one day without proof. Classified ads taken 8 a.m.-12 noon two days before publication in person or by mail with payment enclosed. Advertising rates on request, 974-2620, Monday through Friday, 8 a.m.-5 p.m. Stories and pictures of interest to students may be submitted to the Oracle in LAN 469 or through the suggestion boxes in the Library and UC.

Here's to two 'distinguished' groups



Editor:

In my letters to the Oracle I have usually defended, nay praised, the splendid administration of USF. This time I would like to bestow laurels upon its two symbiotic bodies, the Board of Regents and the recently manufactured task force.

Someone has, to the very face of the chancellor and one of the regents, questioned the need for the BOR. Dreadful, if only as breach of protocol!

Let me remind the questioner that the BOR is made up of very distinguished Florida residents who make a very distinguished salary for doing very distinguished things. Ours is not the place to ask what, but the chancellor confided to me that the BOR, by nature of its very distinguishedness, protects the SUS from the political climate of the legislature. All of us have bathed in the warmth of the BOR's sunlight, safe from Tallahassee chills.

I WOULD ADD that the BOR, as a true leisure class (a corporate Roi Soleil) bestows unique status on the humbler citizens (the nation of students and faculty). Even an administrator told me that he was grateful to the BOR for protecting him. Tears well up in my eyes when I think how one, so much in need of protection, could count on the BOR. I do not need to continue. Let the rabble stew in its own ingratitude.

As to the task force: It is an elected body of the most noble among us, entrusted by the administration to provide counsel and guidance in these dire times when Florida is well nigh sinking under the weight of tourists. In effect, the task force is another protective shield (hence its military name) that is to aid in the administration's selfless and just task of deciding who or what among us (except, of course, the indispensable administration and the task force) is most worthless.

Distractors have made the suggestion, based on the well-informed but ill-advised words of its chairman, that the task force will decide who should be fired. Nothing is further from the truth. As the president pointedly

letters

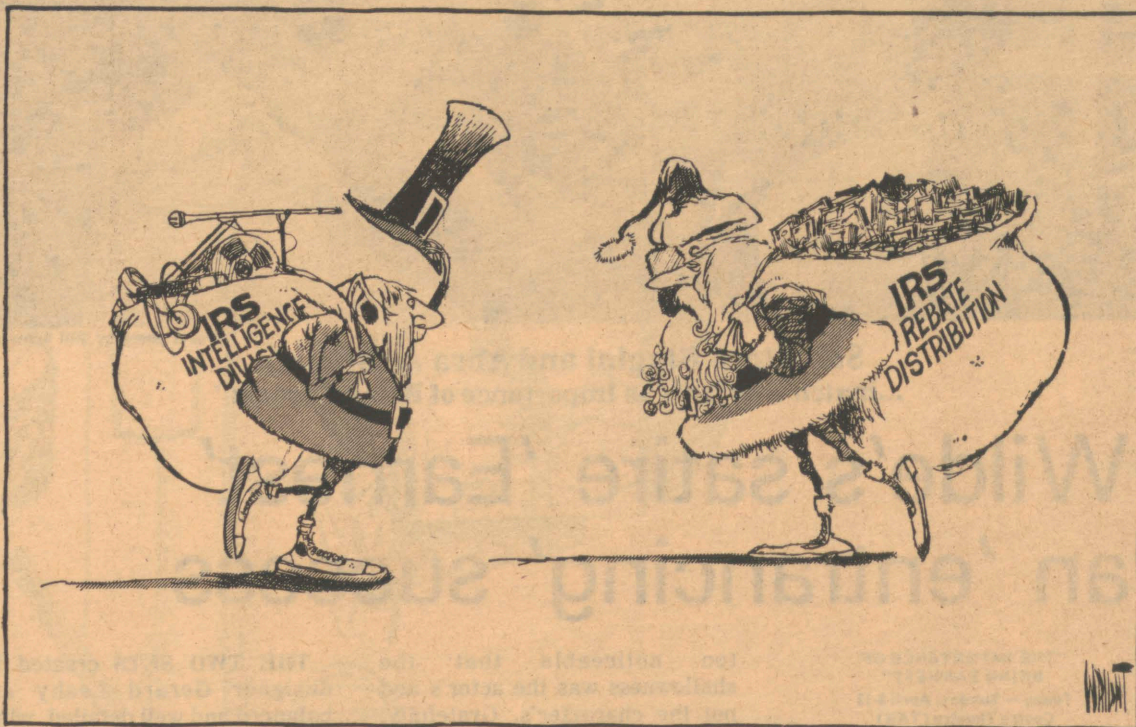
corrected the chairman, the task force should, rather, make general suggestions and con-

tingency plans.

TO THE skeptics among my readers I say that the administration is greatly reluctant to fire people and most likely will only eliminate programs and positions. It will only do so (and will make perfectly clear when it does so) that it has acted in general agreement with the wise

counsel and guidance of the best and the brightest among us.

By the way, the task force will meet on Friday nights at 8, which indicates the force of its devotion to the task, giving up such TV favorites as "Emergency" and "Help Line." S. A. Zylstra Humanities



Mackey—

Continued from page 4

working together, by cooperating and by making the best of what we have and are as a university community, we can make it through this difficult period with minimum disruption and without sacrificing any vital part of your classroom experiences.

I ask all of you for your assistance and support in the days ahead. If you have any questions — or suggestions — concerning our economic situation or if you have any other questions concerning USF, please feel free to let me hear from you.

Good luck with your studies this quarter.

YE OLDE HAIR PARLOR
Latest in Blow Dry Cuts

Suzanne Montag

Jacqueline Rogers

Use & Retail Redken Products
11708 N. Fla. Ave.
935-3355

letters policy

The Oracle welcomes letters to the editor on all topics. Letters must be typewritten, double or triple spaced, to be considered.

This public document was promulgated at an annual cost of \$143,514.76 or 8c per copy, to disseminate news to the students, staff and faculty of the University of South Florida. (Seventy-one per cent of the per issue cost is offset by advertising revenue.)

FREE FERN

(with I.D.)

Plant lovers find us and you'll be in love!

- Exotic Plants
- Terrarium plants
- Complete selection, indoor-outdoor
- all garden supplies and pottery

EAST SIDE
NURSERY
Main Street
Thonotosassa
986-1143
10 minutes from USF

NOTICE

Koons Tire Center

is now a

B.F. Goodrich Tire Distributor

Special Prices to all USF students, staff & faculty

Koons Northgate Ford

9545 N. Fla. Ave.

933-6571

ELLIOTT KASTNER presents A ROBERT ALTMAN Film

"THIEVES LIKE US"

"One of the year's 10 best films..." N. Y. Film Critics

"Altman's finest film to date and one of the most satisfying American movies in recent years. Funny, wise and touching."

— Paul Zimmerman, NEWSWEEK

Starring Keith Carradine, Shelly Duvall ★ Directed by ROBERT ALTMAN

FIRST AREA SHOWING
FIRST AREA SHOWING

Friday, April 4; Saturday, April 5; Sunday, April 6

7:30 and 9:45 p.m. ENA \$1.00 Film Art Series United Artists



Oracle photo by Bill Schwarz

Salvatore Biagini and Abra A. Bigham
...match wits in "The Importance of Being Earnest"

Wilde's satire 'Earnest' an 'entrancing' success

"THE IMPORTANCE OF
BEING EARNEST"

Today — Sunday, April 8-12
Centre Theatre (TAR)
8:30 p.m.

Reservations recommended 974-2323

Reviewed by

LUCY KASPAR

Entertainment Writer

Director Peter O'Sullivan has moved "The Importance of Being Earnest" from the traditional proscenium arch to a more intimate atmosphere, and with gusto. The result is an entrancing two hours, full of wit, charm and Wilde philosophy.

From his student cast, O'Sullivan has coaxed several outstanding performances. Chris Robinson is excellent as Lady Bracknell, the stuffy matriarch. Robinson, as well as Salvatore Biagini, who portrayed Algernon, seem to be the most at home with the complexity and swiftness of Wilde's language. Biagini manages to capture the impishness of Algernon without taking unfair advantage of an easily upstaging role.

DIANA GUSSLER as Gwendolyn and Abra A. Bigham as Cecily bring to their roles a humorous mixture of passion and propriety.

A minor weakness though, was witnessed in the character of Jack, portrayed by William Downe. In the opening act it was

too noticeable that the shallowness was the actor's and not the character's. Gratefully, Downe reversed this by the second act, when his full talents as an actor were displayed.

Particular mention must be given to Gina Sami, who was outrageously funny as Miss Prism.

The costumes in "Earnest" do much to evoke the elegant lines of early 20th century English attire. In the outfits worn by the women, the sensuality and strictness of form demonstrate the undeniable duality of the period.

THE TWO SETS created by designer Gerard Leahy are balanced and well detailed, while allowing the actors room for free movement on a relatively small stage.

Although "Earnest" was written in 1895, O'Sullivan and his cast prove that Wilde's satire is anything but dated. His social commentary can be observed as Wilde debates himself in the various characters. The company deserves high praise for the manner in which they re-create the brilliance that was Oscar Wilde.

Fraternity House Barbershop (Sebring Certified) (Unisex Shop)

SHAGS STYLING
LAYER CUTS RAZOR CUTS
PH 971-3633

Appointments Available
Hours daily 9-6 thurs. & fri. 9-7
13520 University Plaza

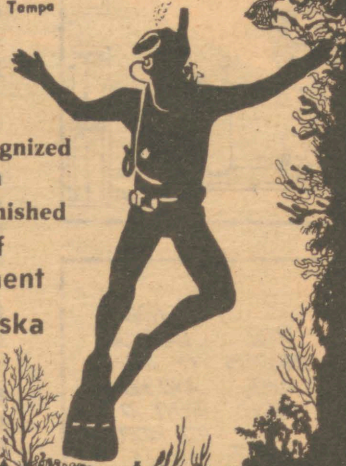
Join the Underwater World!
Learn to Dive
In
One Week!

Seascope
of Tampa

Discounts with
student ID.

Internationally Recognized
Certification
All Equipment Furnished
Top lines of
diving equipment

8032 N. Nebraska
933-7511



THE ANSWER

~~79.95~~

69.95



ROCKWELL

61R ADVANCED SLIDE RULE ELECTRONIC CALCULATOR

The 61R can handle trigonometric, inverse trigonometric, logarithmic and inverse logarithmic functions. But that's not all. This easy-to-operate calculator computes roots, powers, reciprocals, squares, sum of squares and more — all this plus a full accumulating memory.

SPECIAL PRICES

Rockwell 63R	99.50
Corvus 415-Business Memory	59.96 49.95
Corvus 411-Slide Rule—Scientific	
Notation-Memory	69.95 49.95

ALL PRICES INCLUDE ADAPTER & CARRYING CASE



turners



Phone 343-2000
Tyrone Square Mall
St. Pete

Phone 935-2000
Floriland Mall
Tampa

"You May Strive to Control My Life . . .

You May Cause Me Problems

. Even Pain.

But don't ever tell me I don't care."

C.A.U.S.E.

TO each according to his needs . . .

FROM each according to his ability!

SIGN-UP DAY

U.C. MALL

Wednesday, April 9, 10 a.m. to 3 p.m.

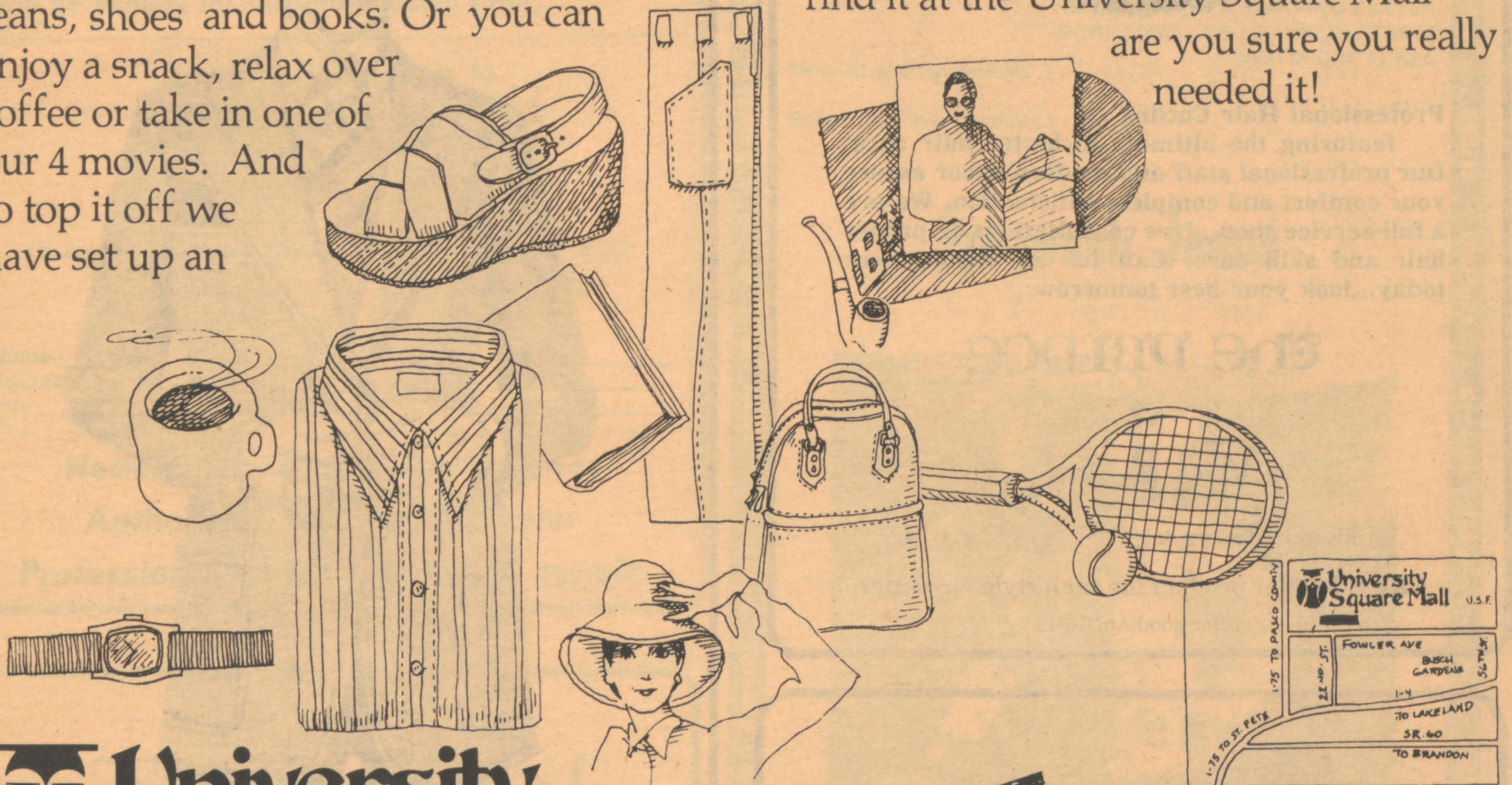
Phone 974-2099 — 2388

If it's not at University Square Mall are you sure you really need it.

There's no end to the things you can find, no matter what you're shopping for or whom you're looking for. The University Square Mall has it all. From Tennis Racquets, shirts and hats to records, jeans, shoes and books. Or you can enjoy a snack, relax over coffee or take in one of our 4 movies. And to top it off we have set up an

information desk where our hostess will assist you in finding where to find what you're looking for.

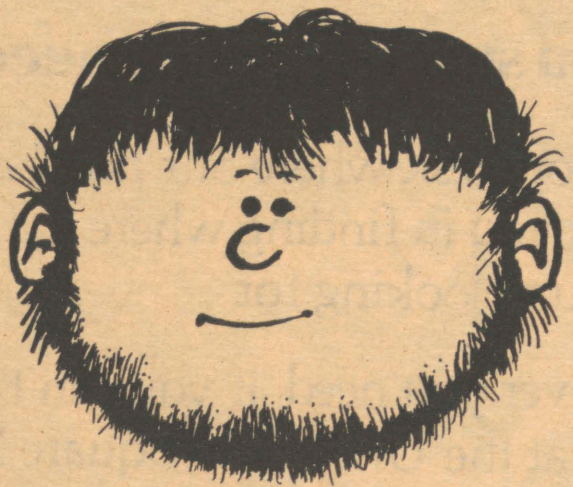
So whatever you need, if you can't find it at the University Square Mall are you sure you really needed it!



University Square Mall

Take I-75 one mile East on Fowler Ave.
Open Mon.-Sat. 10:00 a.m. - 9:30 p.m.
Sun. 12:30 - 5:30 p.m.





Professional Hair Cutting ...

featuring the ultimate in better hair care. Our professional staff and modern decor assure your comfort and complete satisfaction. We are a full-service shop...free consultations on proper hair and skin care. Call for an appointment today...look your best tomorrow.

THE PRINCE

AT

Wolf Brothers

University Square Mall Ph. 223-5501 ext. 284

FREE Roffler product for each style customer

offer good April 3-10



tank
\$8

jeans
\$16

ooh...

**We've got those
pre-washed
denim blues!**

Pre-washed for that
"made just for you"

from ...

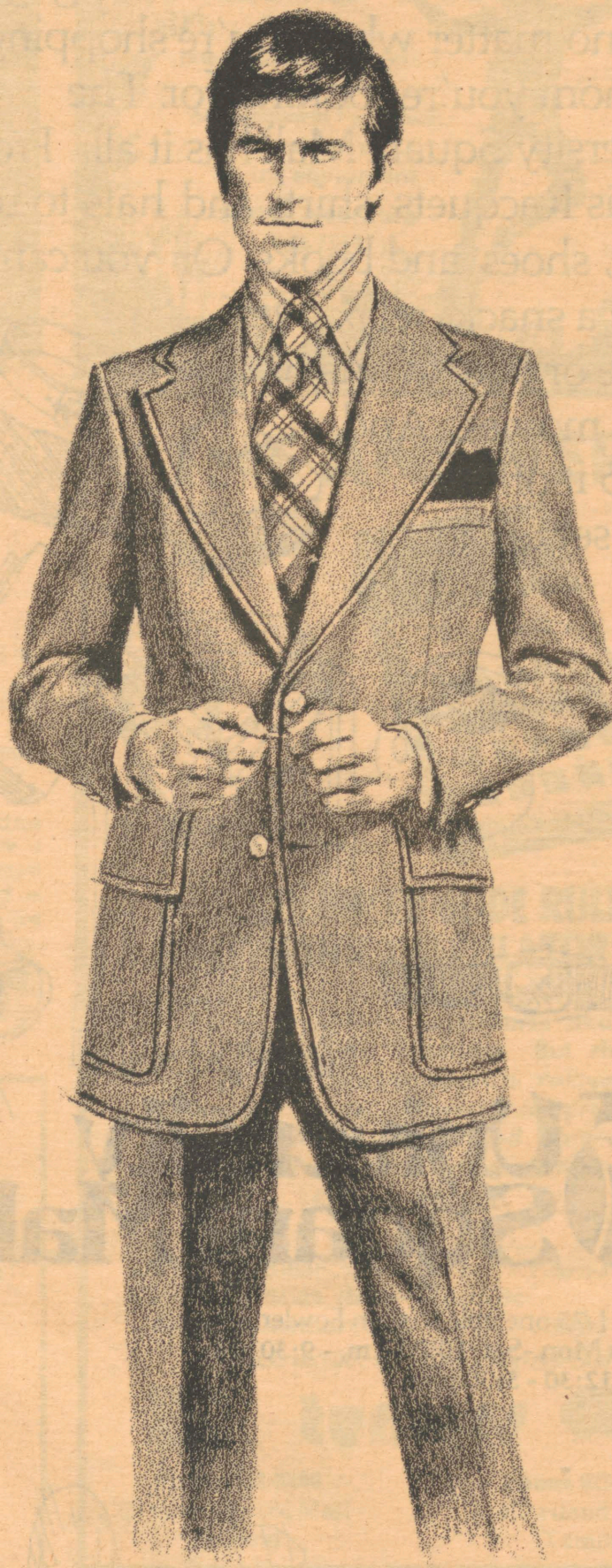


P.S. You'll just love our
waist-skimming tank too! In
lots of colors!

BODY SHOP

University Square Mall

The Blazer Suit for that First Impression



Austin Reed of Regent Street adds a British accent to the Blazer Suit. Versatile . . . handsome as a business suit or blazer coat with sport slacks. Lightweight dacron and wool in navy blue with rust stitching . . . accented with classic silver blazer buttons. Austin Reed . . . when the first impression has to count. \$135

Wolf Brothers

One of America's Fine Stores Since 1898.

UNIVERSITY SQUARE MALL

FREE

with this coupon

Ear Piercing by trained personnel

When you purchase a pair of 24KT gold overlay surgical steel earrings for \$7.95. Parental consent required for those under 18. Sorry, no one under 8 will be eligible for this ear-piercing offer.

Bring this coupon to
KAY JEWELERS
The Diamond People

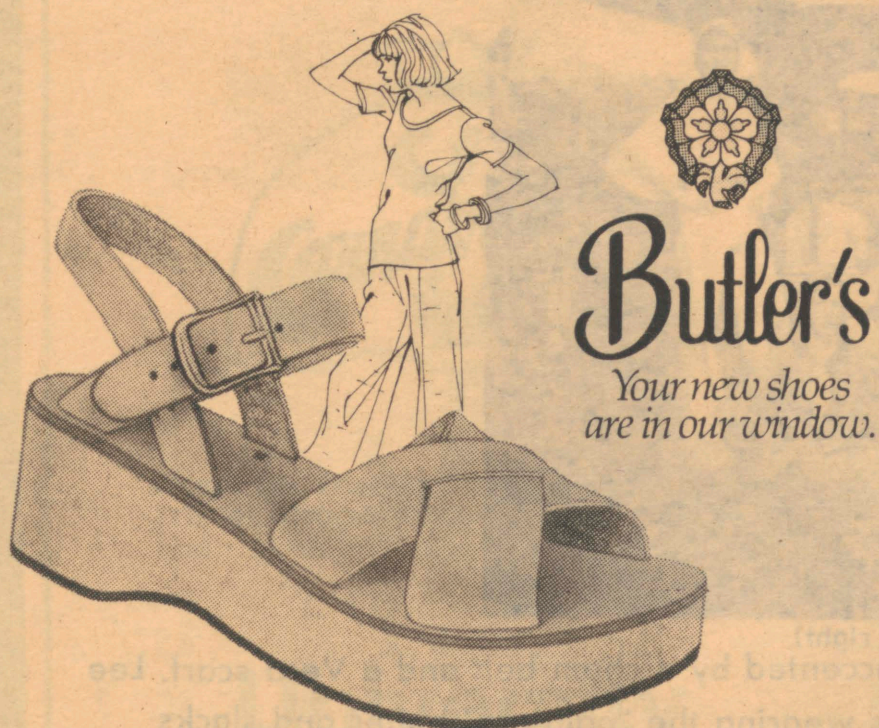
University Square Mall
977-0302

Tyrone Mall
381-0007

Name _____
Address _____
City _____ State _____ Zip _____

Headquarters for Seiko watches
Authorized Keepsake jeweler
Professional watch & jewelery repair

The Buffalo!



Butler's
Your new shoes
are in our window.

A look that will never be extinct!
Leather straps cross on a suede-wrapped wedge.
Priced so you can have two pair!

\$9.99



University Square Mall

SPRING

75

Lerner Shops

UNIVERSITY SQUARE MALL
NORTHGATE SHOPPING CENTER
BRITTON PLAZA SHOPPING CENTER
DOWNTOWN: 705 FRANKLIN STREET
WESTSHORE PLAZA

New-as-spring looks!

Better-than-ever values!

Pre-wash Jeans



**Patchwork top & halter in multi-colors
complement pre-wash, pre-shrunk denim
jeans — for that 'fun-loving' casual look**

All hosiery 25% off. Effective April 4th.



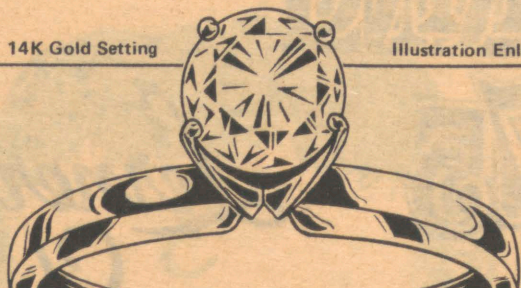
It's easy to be fashionable...
just charge it at *Lerner Shops*!

Long Dresses - Halter - Shirts - Jeans - Jackets - Lingerie - Dresses - Slacks - Sweaters - Pant Suits - Blouses - Blazers

Slacks - Shirts - Halter - Dresses - Lingerie - Blazer - Blouses - Pant Suits - Jeans - Bathing Suits - Shorts - Hose

14K Gold Setting

Illustration Enlarged



DIAMOND SOLITAIRE VALUES

1/4 CARAT...REG. ~~\$149~~ **\$119.**

1/2 CARAT...REG. ~~\$399~~ **\$299.**

3/4 CARAT...REG. ~~\$599~~ **\$469.**

3 DAYS ONLY! HURRY...LIMITED QUANTITIES

USE OUR CONVENIENT CREDIT TERMS: Budget Accounts • Charge Plans
We Accept: BankAmericard • Diners Club • Shoppers Charge • Master Charge • Carte Blanche • American Express

Gordon's
JEWELERS

IN TAMPA SHOP AT GORDON'S:
UNIVERSITY SQUARE MALL



A Salon of Convenience...

Hair styling for you and for him

No appointment necessary

ManTrap

TAMPA UNIVERSITY SQ. MALL 977-7050
ST. PETE TYRONE SQUARE MALL 344-3561
ST. PETE 2842 NINTH STREET NO. 822-3717

Featuring
REDKEN RK

Lory's

FASHION SHOPS INC.

Exclusive styles just right for spring.



(from left to right)

Melody is wearing a stylish long sleeve big dress in pastel stripes from Saba of California. Maria is wearing a Roncelli pant suit, Vera scarf and a blouse by Dominick. Dot is attired in a Samantha, green coordinated set

accented by a chain belt and a Vera scarf. Lee is wearing the "painters" halter and slacks from In II which also coordinates with skirt, jacket and the new big top.

2230 University Square Mall
Tampa, Fla. 971-1514
Layaway

BankAmericard American Express Master Charge

Register now for a
\$25.⁰⁰ gift certificate drawing
to be held April 17, 1975.

IMPORTED INDIAN SHIRT SALE

Knit Shirts \$2⁹⁹

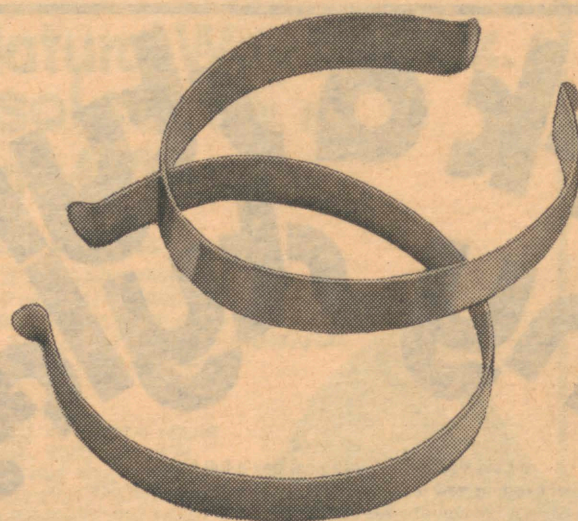
Gauze & Crepes \$5⁹⁹

Gentlemen Johns \$7⁹⁹



Duds for Dudes at Dynamite Prices.
at shops throughout Florida

University
Square Mall



Silverplated bicycle clips,
\$12.50 the pair.

(Engraved Free)

They're by Towle. You wear one on the trouser nearest the chain, so it won't get caught in the machinery. The other? You have a choice: give it to the lady who rides with you (or who doesn't). Or wear on the other trouser for a sense of symmetry. Towle silverplated bicycle clips, \$12.50 the pair.

Jacobs

Fine Jewelers Since 1890
University Square Mall • Tampa
Also Jacksonville • West Palm Beach • Orlando
Merritt Island • Daytona Beach

the
quarter-pound
sandwich
that's
deliciously
different. Chick-fil-A.



About four ounces of whole boneless, skinless, chicken breast pressure-fried 'til it's golden brown. Never greasy. And seasoned to perfection. It's the most deliciously different quarter-pound sandwich treat in the whole wide hamburger-crazy world! Chick-fil-A.

University Square Mall

Westshore Plaza

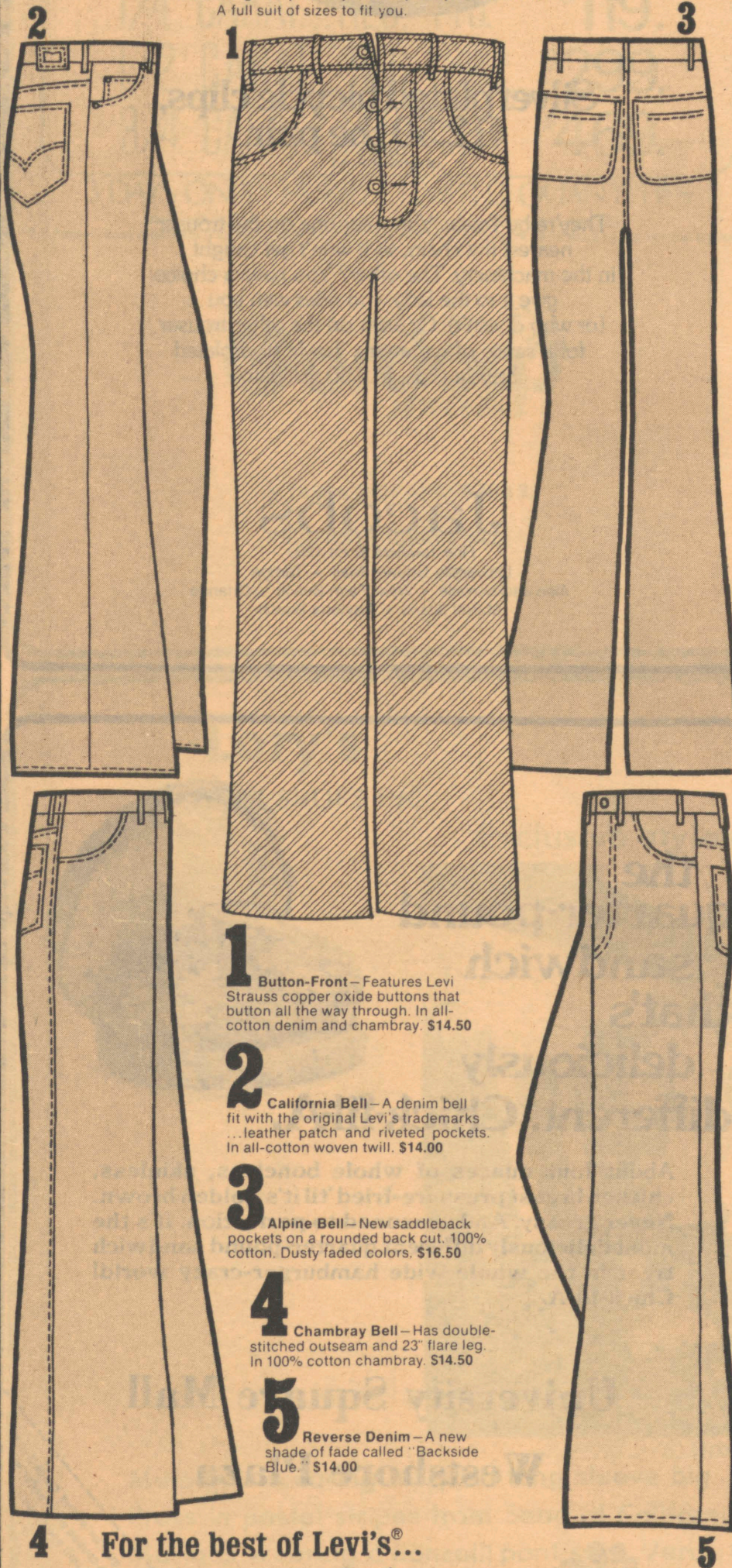
Chick-fil-A

A quarter-pound of deliciously different quarter-pound Chick-fil-A sandwich or box dinner. Simply present this coupon when ordering. Offer good only at locations listed in ad. Limit one coupon per person. Offer good thru April 12, 1975.

25^c
off

Pick a style, any style!

...of Levi's Jeans®. County Seat has a full house
of exciting new jeans styles in super styles and fabrics!
A full suit of sizes to fit you.



1 Button-Front—Features Levi Strauss copper oxide buttons that button all the way through. In all-cotton denim and chambray. \$14.50

2 California Bell—A denim bell fit with the original Levi's trademarks ...leather patch and riveted pockets. In all-cotton woven twill. \$14.00

3 Alpine Bell—New saddleback pockets on a rounded back cut. 100% cotton. Dusty faded colors. \$16.50

4 Chambray Bell—Has double-stitched outseam and 23" flare leg. In 100% cotton chambray. \$14.50

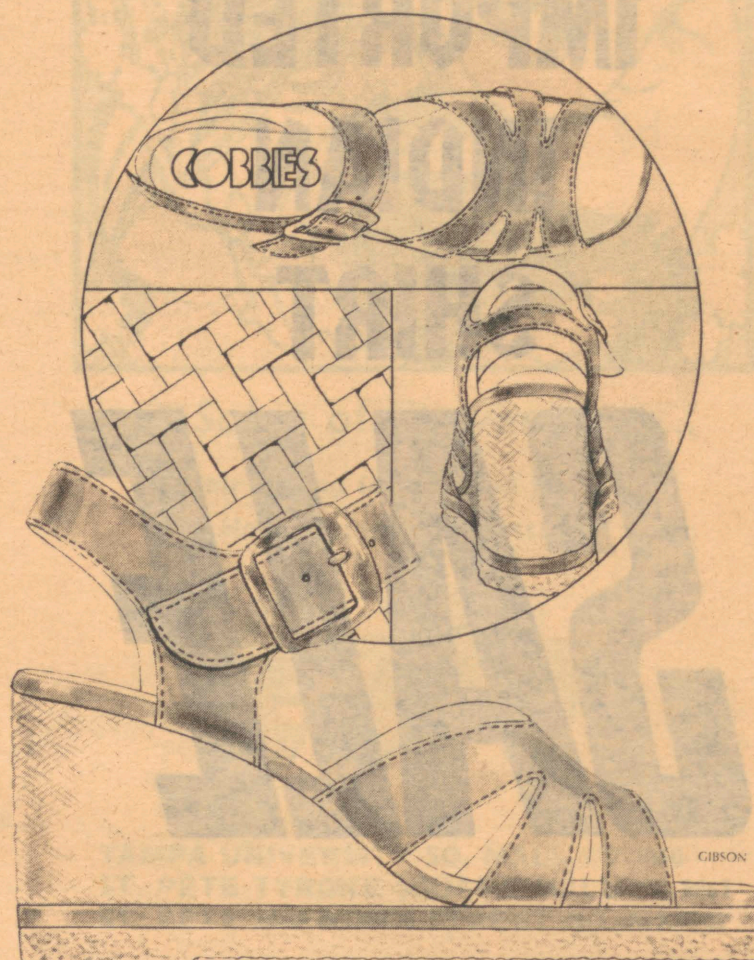
5 Reverse Denim—A new shade of fade called "Backside Blue." \$14.00

4 For the best of Levi's...

COUNTY SEAT
STORES

University Square
also in St. Pete & Bradenton

Rope plus wedge equals
the natural look!



Add a crepe sole and you've got it all!

All the fashion and fun-loving comfort
for a summer full of jeans and pants.

Pardon our pride
but once you see it, try it —
we're sure you'll buy it!

\$25⁰⁰ —(colors) camel, white

We have your size, N—M—W 4—11

BENTLEY'S
RED CROSS
SHOES*

UNIVERSITY SQUARE MALL
2200 E. FOWLER AVENUE
TAMPA, FLORIDA PH. 977-0Q75
(one mile east of I-75 on Fowler Ave.)

JUST SAY CHARGE IT!

• MASTER CHARGE • BANKAMERICARD • AMERICAN EXPRESS
• DINERS CLUB

* This product has no connection whatever with The American National Red Cross

LANE BRYANT Tall Shop



be a good sport

and a beautiful one, too, in laced-up separates like these. The inspiration is French, the translation American, and the look terrific. More good news. Each is a summer natural in cool shades of blue and white cotton. Shirtjacket, \$25.

Elastic-back halter in stripes or solid, laced up the front, tall sizes M — L — XL, \$9.

Front-laced pants, \$22 Striped pants, \$20 tall sizes 10 to 20

*If you don't have a Lane Bryant Charge, do write or come in for our exciting Tall Summer Book, ready early April.

UNIVERSITY SQUARE MALL,
E. Fowler Ave. Ph. 971-7951

Charge it with Lane Bryant Charge, Master Charge or Bank Americard.

the Natural Way to Walk. Exersoles® only at Thom McAn

THE REAL THING:

THIS IS THE SHOE THAT IS IN SO MUCH DEMAND TODAY BY NATURE LOVERS EVERYWHERE. IT'S THE EXERSOLE BY THOM McAN. IT'S THE REAL THING.

LOWER HEEL:

NO RAISED HEEL TO SHOCK YOUR LEG AND SPINE. THIS LOWER HEEL ABSORBS THE HEEL GROUND-CONTACT SMOOTHLY... LIKE WHEN YOU WALK BAREFOOT ON SAND. LESS SHOCK. LESS TIRING.

ROCKER SOLE:

WHEN YOU WALK YOUR WEIGHT SHIFTS ALONG FROM HEEL TO TOES. THIS EXERSOLE ROCKER SOLE TAKES THE WEIGHT IN STRIDE AND HELPS GIVE YOU NATURAL TOE "SPRING". LESS TIRING.

NATURAL LEATHER:

YOUR FOOT NEEDS TO "BREATHE" (NATURALLY). THERE'S NOTHING LIKE REAL LEATHER TO GIVE YOUR FOOT NATURAL COMFORT AND SUPPORT.

FREEDOM FOOT:

THE EXERSOLE TOE FOLLOWS THE NATURAL CONTOURS OF YOUR FIVE TOES. NO TOE CRAMP—NO WAY. FREEDOM CAN BE SO IMPORTANT.



Men's 18⁹⁹-19⁹⁹ Women's 16⁹⁹
Sandals, Men's & Women's, 13⁹⁹-14⁹⁹
ALSO Women's White Smooth Leather 16⁹⁹

Thom McAn

University Square Mall

WHY YOU SHOULD GET YOUR

Levi's

FROM US....

HANG TEN
h.i.s
GIANCARLO
DANBURY
McGREGOR
HANES
HUBBARD
S.E.X.
EUROPECRAFT
HIS of FLORIDA

VAN HEUSEN
IMPULSE
CANTERBURY
CAMPUS
D'AVILA
JOCKEY
VOLARE
MUSK
SCENE III
WEMBLEY

FREE COFFEE
FREE GIFT WRAP
GOOD SERVICE

You don't wear Levi's all the time, but whether you do or not, HIS has everything you need to look your best.

USE YOUR:
BankAmericard
Master Charge
Diner's Club
American Express

HIS Stores for Men

USE YOUR BankAmericard, Master Charge, American Express, Diners Club

University Square Mall

OPEN 10-9:30 | 12:30-5:30
MON-SAT | SUN.

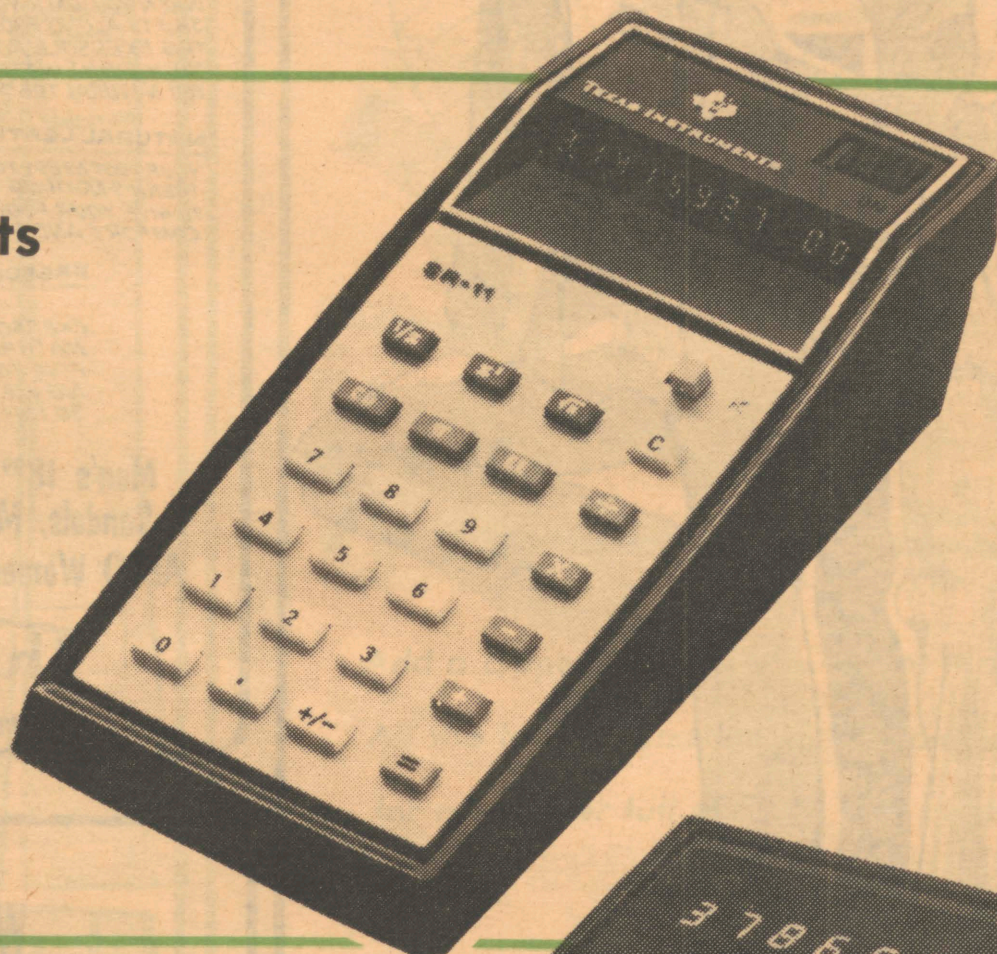
JCPenney

**Texas Instruments calculators
make school calculation a breeze!**

Texas Instruments SR-11 calculator

69⁹⁵

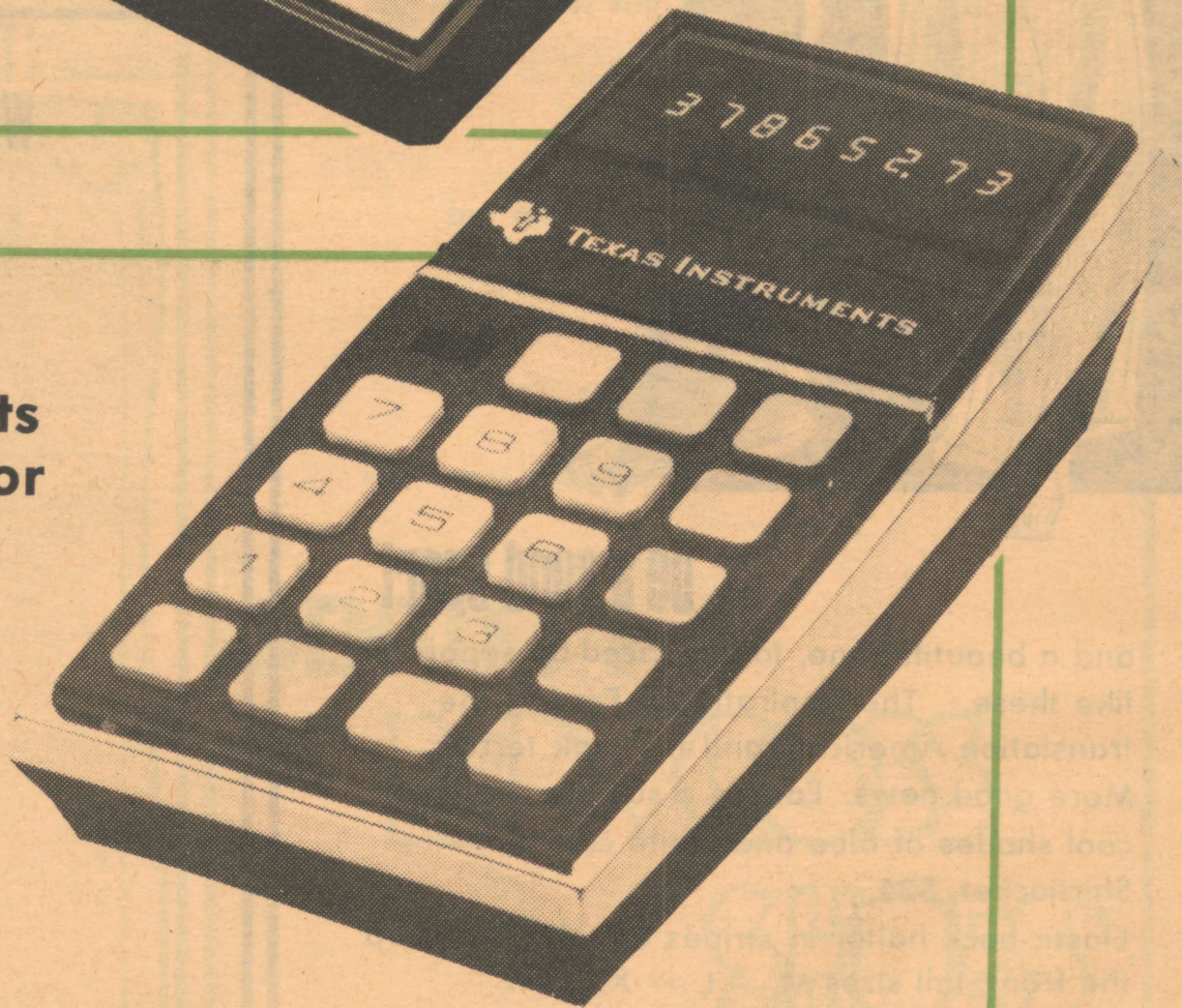
This is a great hand-held scientific calculator. Does reciprocal, square and square root problems. Has memory system and scientific notations. 10 digit readout and entry on lighted display panel. Vinyl carry case.



Texas Instruments TR-1500 calculator

49⁹⁵

A terrific pocket size rechargeable calculator with basic four functions and per cent key. 8 digit readout and entry on lighted display panel. Overflow and underflow indicators. Operated on rechargeable batteries. Vinyl carry case.



JCPenney University Square, Tampa only

Shop 10 a.m. to 9:30 p.m. Monday thru Saturday ... 12:30 to 5:30 p.m. Sunday

'Sunday' captures everyday life

"SUNDAY, BLOODY SUNDAY"
Friday and Saturday
LET 103
8 & 10 p.m.
Gen. Adm. \$1.00
Free with valid I.D.

"Sunday Bloody Sunday" has a gruesome ring to it that might make the more weak-hearted avoid seeing it. But if you know British lingo, this Sunday is a contemptible one.

There are no infamous bank robbers or other "heroes" in this

film, but rather everyday sorts who make those everyday compromises that we all make simply in order to get along. They are people who try to love, while at times losing, and who may try again.

THE FILM REVOLVES around a long boring weekend — a "bloody Sunday." It stars Glenda Jackson as an employment counselor, and Peter Finch as a physician.

Their predicament is a common one; both are in love with, and are perhaps loved by the same person, a pop artist played by Murray Head.

WITH SUCH INSTANCES as Finch's encounter with a strung-out hustler, Ms. Jackson's night with a weary middle-aged businessman looking for a new job and a weekend that she and Head spend with some very noisy

children, the film reaches the heart of man's loneliness, his pride and his existence.

The script was written by Penelope Gilliati who, as Vincent Canby of the New York Times writes, "has the extraordinary ability to create intelligent characters who don't sound like mouthpieces, to capture those looks and sounds of the surface of things that suggest the universe

just beneath, and to write dialogue that is simultaneously rueful and funny and as spontaneous as love itself."

Composers Symposium starts today

The recent original musical compositions of 20 USF students will be performed, and later discussed, at the USF student composers symposium today through Sunday in the fine arts auditorium (FAH 101) at 8:30 p.m.

Several student works will be presented during each evening, followed by a discussion among composers, musicians, panelists and observers.

The symposium is free to the public.

'Brand X' initiates Head Theatre

Head Theatre, a staple for many late-night movie-goers, opens its Qtr. 3 schedule tomorrow at midnight with "Brand X," an outrageous parody of normal television programming.

Starring such underground notables as Abbie Hoffman and Ultra Violet, the film will be shown in LET 103 and is free to students with a valid ID.

'Mice' tryouts today and tomorrow

Tryouts for John Steinbeck's "Of Mice and Men," to be directed by Larry O'Connell, will be held in LET 478 today and Friday at 5 p.m.

Students, staff and faculty members are welcome to try out for this production, to be presented in the latter half of May.

Callbacks will be on Monday.

casual corner.

fantastic
spring

SALE
up to **1/3 off**

Tyrone Square Mall

West Shore Plaza

University Square Mall

pantsets

sweaters
and
knit
shirts

pants
and
skirts



**Old Book Shop
Of Tampa**

BUYING AND SELLING OF USED BOOKS

PAPERBACKS [HALF PRICE]

HARDBACKS [DISCOUNT]

- FICTION
- NON FICTION
- CHILDRENS BOOKS
- WORLD HISTORY
- MYSTERY
- HOW TO
- RARE BOOKS
- NATIONAL GEOGRAPHICS
- DATING BACK TO 1913

12209 NORTH FLORIDA

J.D. SQUARE SHOPPING PLAZA

**TODD
THEATRE**

NEBRASKA AT FOWLER
971-0007

All Seats \$2.00 At All Times
DOUBLE FEATURE

Flesh
Gordon
X

Sugar
Cookies
X

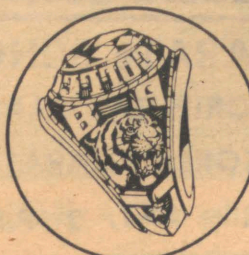
MIDNITE SHOW FRI. & SAT.

**Order
Your**

**University of South Florida
class rings**

SPECIAL!

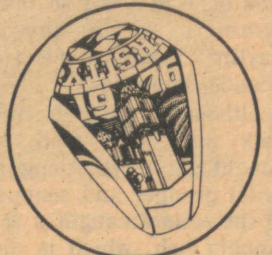
**5% Discount on Ring Orders
on Thurs., 4/3 only!**



Heavyweight-Lightweight
10K-14K Gold



Other Precious Materials



Large-Small

**Guarantee
Lifetime**

**Many Selections
Available**

**By Josten's
"Choice of Champions"**

BOOK WORLD

BOOKWORLD

New & Used Books — General Texts

LA PLACE VILLAGE - Fletcher & 15th St.
Open Mon. thru Fri. 9 to 9 - Sat. 9 to 6 977-4590

Trade in your old High School Ring

SPECIAL OFFERING

sports

April 3, 1975

Sailors return from Bahamas

BY DEE GRAHAM
Oracle Sports Writer

Safely home after a week-long 250-mile cruise in the Bahamas, members of the USF sailing club are already making plans for their next semi-annual trip, Randy Wells, club president, said.

During the quarter break, 46 Windjammers sailed in six boats from Miami to the Bahamas and back. Now the group is considering a trip to Mexico, the Florida Keys and the Tortuga Islands off Key West for a September cruise, Wells said.

SIX CLUB MEMBERS were chosen to skipper the boats, each with a crew of from six to 11 people. Many of the Windjammers had never sailed on a cruise like this before, although about 20 of them had some sailing experience, Wells said.

A Morgan Outisland OI 33-foot boat was skippered by Wells, 36-foot Columbia by Earl Patterson and a 30-foot Grampian by Jim King. Archie Werner was in charge of a Soverral 37-foot boat, Bill Leaton skippered a 35-foot Pearson and Dudley Shutzendorf skippered a Morgan Outisland 41-foot, Wells said.

The boats were chartered from Miami and Ft. Lauderdale.

The Windjammers left March 22, crossing the Gulf Stream, a depth of several hundred fathoms, to Bimini Island. They went approximately 45 miles, Wells said.

THEN THE GROUP crossed the Bahama Banks to Chub Cay, going over a shallow spot about 12 to 14 feet deep.

The Windjammers returned over the Banks in the Barry Islands to Gum Cay and then sailed back across the Gulf Stream to Miami Friday night.

The sailors visited small towns and vacation spots while on the islands. Most of the actual sailing was done at night so the Windjammers would have more daytime hours to spend on the islands, Wells said.

Although the club members took their own food, several caught edible fish. Along with the usual grouper and snapper, two of the sailors caught a 25-pound dolphin fish, which is different from the mammal.

AN EIGHT and a half foot tiger shark was caught by another of the Windjammers on a hand line while crossing the Gulf Stream.

Wells said the weather for the trip was good, although the group did encounter some squalls. There were 4 to 6 foot seas in the Gulf Stream during the crossing, but Wells said last time the Windjammers went through that area the seas were 8 to 10 feet.

The trip was a "crash course" for many of the club members, Wells said. Although the craft were sailboats, they all were equipped with motors.

Crossing the Bermuda Triangle "wasn't as freaky as en-

The Stetson University baseball team got an unexpected assist yesterday as it ended USF's 10-game winning streak by handing the Brahman a 3-0 setback.

"We hurt ourselves," USF

coach Jack Butterfield said. "At this stage that's inexcusable.

"WHAT CONCERNED me was the three passed balls and three balks," he explained, adding that one of these passed balls, charged to Dave Bearden, and two of losing pitcher Steve Ruling's balks, led to two of the Hatter's three runs.

First baseman Don Boyer put Stetson on the scoreboard in the fourth inning when he singled, moved to second on Ruling's first balk, stole third and scored on a passed ball.

The Hatters added two more in the sixth. Jim Girardeau walked and stole second, and Brad Hoch singled him home. Then Hoch stole second, went to third on Jim Howard's single and scored when

Ruling balked again.

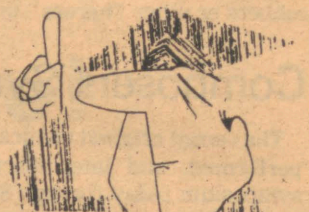
USF THREATENED twice in the late innings. With two out in the bottom of the sixth, Tony Rizzo walked and Don Hogestyn doubled to put runners at second and third. Mike Martinez hit the first pitch down the right field line, but it was foul by only inches. He then grounded out to end the inning.

In the seventh stanza, Brahman shortstop Chuck Adams bunted his way on, and Bobby Reynolds sacrificed him to second. But Adams was cut down at the plate trying to score on Tommy Guess' double, and Guess was caught in a rundown and tagged out.

The Brahman, now 19-5, will host Trinity College today at 3:30 p.m.

This quarter stay home for a course* or two...

*Y.O.U. course



you

YOUR OPEN UNIVERSITY

USF College Credit courses by television in the comfort of your own home or in a reserved room on campus. Each lesson broadcast twice on WUSF-TV, Channel 16 or WUSF-FM radio.

How to Register? It's easy! Fill out your registration form the same as for other courses with the correct reference number, prefix, course and section numbers. When you register, notify the Y.O.U. office immediately (located in the library, basement, ULI 20-D, telephone 974-2341, Ext. 23) so that you may receive a course syllabus, viewing schedule, and other necessary information.

QUARTER III SCHEDULE

4181 PHY 371-501 CONTEMPORARY PHYSICS (5)

Dr. Roger Clapp
2:30 p.m. every weekday
6:00 p.m. every weeknight

4873 PSY 201-501 INTRODUCTION TO PSYCHOLOGY (5)

Dr. Paschal Strong
3:00 p.m. every weekday
6:30 p.m. every weeknight

0336 FIN 201-501 PERSONAL FINANCE (5)

Dr. Leslie Small
3:30 p.m. every weekday
7:00 p.m. every weeknight

4577 GPY 371-501 WEATHER & MAN (5)

Dr. Dewey Stowers
4:00 p.m. Mon., Tues., & Wed.
7:30 p.m. Mon., Tues., & Wed.

2154 MUS 371-501 ISSUES IN MUSIC (2) (S/U Grade Only)

Mr. Jacques Abram
4:00 p.m. Thursday
8:00 p.m. Thursday

1863 ART 310-501 INTRODUCTION TO ART (3) (S/U Grade Only)

Mr. Bruce Marsh
4:30 p.m. Mon., Tues., & Wed.
8:00 p.m. Mon., Tues., & Wed.

4378 ANT 371-501 ANTHROPOLOGICAL PERSPECTIVES (4)

Dr. Evelyn Kessler
5:00 p.m. Mon., Tues., & Wed.
8:30 p.m. Mon., Tues., & Wed.

3096 PHI 112-501 LOVE, SEX & VIOLENCE (2)

Dr. James Gould
Mr. John Iorio
5:30 p.m. Mon. & Wed.
9:00 p.m. Mon. & Wed.

COURSES BY RADIO (WUSF-FM, 89.7)

2154 MUS 371-501 ISSUES IN MUSIC (2) (S/U Grade Only)

Mr. Jacques Abram
8:00 p.m. Thurs. (simulcast)

2071 MUS 205-501 INTRODUCTION TO ELECTRONIC MUSIC (3)

Mr. Larry Austin
6:30 p.m. Mon. & Wed.



COMPLEAT
Collect your fish and pets at the Fountain.
Find out how you can save money by joining the "aquarium Club"

Come in and ask TODAY



Aquarium & Pet Shop
Next to Honda Village
14633 N. Nebraska Avenue
977-1213

GENERAL CINEMA CORPORATION

ALL CINEMAS-BARGAIN MATS. EVERY DAY 'TIL 2:30 P.M. - \$1.25

1:30-3:40-5:45-7:50-10

WALT DISNEY
ESCAPE TO WITCH MOUNTAIN

G

2:00-4:00-6:00-8:00-10:00

JOHN WAYNE "BRANNIGAN!"

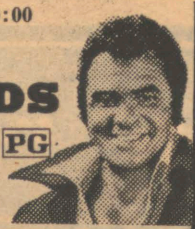
PG

UNIVERSITY CINEMA I-II-III-IV

977-1410 UNIVERSITY SQ. MALL · 2200 E. FOWLER AVE.

2:00-4:00-6:00-8:00-10:00

BURT REYNOLDS
in
W.W. AND THE DIXIE DANCEKINGS



PG

2:00-5:00-7:30-9:50

"A TERRIFICALLY ENTERTAINING WHODUNIT!"
—Vincent Canby, New York Times
AGATHA CHRISTIE'S "MURDER ON THE ORIENT EXPRESS"



PG

KIM KARATE SCHOOL

LEARN THE ORIENTAL MARTIAL ART OF
KOREAN KARATE

OPEN MON. — SAT. 2 P.M. - 10 P.M.

FOR MORE INFORMATION CALL

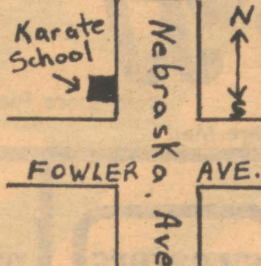
12104 N. NEBRASKA AND VISIT OUR CLASSES TANG SOO DO

KOREAN INSTRUCTOR

4TH DEGREE
BLACK BELT

HAK C. KIM

TEL. 971-3946



Gymnast to enter national meet

BY JEFF WHITTLE
Oracle Sports Editor
Maribeth Steinlen will be the

only participant from Florida when the Association for Intercollegiate Athletics for



Oracle photo by Bill Schwarz

USF sophomore Maribeth Steinlen
...will compete against the nation's best

Aerobic dance course offered

A noncredit aerobic dance course, sponsored by the intramural department and taught by Assistant Coordinator of Recreational Sports Jill Barr, is being offered Qtr. 3.

Students, faculty members and staff interested in participating

may attend any of the sessions, held Mondays and Wednesdays from 2 to 3 p.m. and Tuesdays and Thursdays from noon to 1 p.m. in the Dance Studio, GYM 005.

For more information contact Barr at 974-2125.

Women National Gymnastics Tournament begins in Hayward, California Friday.

"The University of Florida has a team, but they aren't sending anybody. I guess that just leaves me," Steinlen said.

THE USF sophomore earned the trip by finishing second in the Region II championships last month. It was the second year she qualified for the nationals, "but last year I just couldn't afford to go. It was too expensive," she said.

Steinlen, a member of the USF gymnastics club, has been working out at least four and a half hours a day.

Scoring in the tournament will be based on four different areas of gymnastics: balance beam, vaulting, uneven parallel bars and floor exercises. A participant can score up to 10 points in each category, making 40 the perfect overall score.

Steinlen totaled 34.85 at the regionals, 1.1 points behind winner Judy Puttman of Southwestern Mississippi Junior College. The Brahman gymnast said a score of 36 or above is considered "elite."

"I THINK I can get that at the nationals," she said. The best she's done is 35.7.

"I get a gymnastics magazine, so all I know about my competition is what I've read," Steinlen explained. "But looking at the scores they've gotten, I think I have a real good chance to

finish in the top six."

A high finish at the nationals would give Steinlen a chance of making the team that participates at the World University Games.

"They say the top five from this

meet will go to the games," Steinlen said. "That's what I'm really shooting for."

"But there's a lot of politics involved in choosing that team," she added. "You never can really tell who will end up on it."

LET US
SHOW YOU
The Way

Come and see us now
We are also preleasing
for September occupancy
1-2 or 3 BEDROOMS

Swimming Pools
Shag Carpet
Drapes
Electric Kitchen
Dishwasher & Disposal
Large Closets
Exercise Room
Club Room
Sauna

Two convenient locations

10610 N. 30th St. North 22nd St. at 131st Ave.
near Busch Gardens near USF and VA
hospitals
Tel. 977-0110 Tel. 971-7977

Rental Offices Open
9 A.M. - 6 P.M. Mon.-Fri.
10 A.M. - 5 P.M. Sat.
1 P.M. - 5 P.M. Sun.
or Later by Appointment



Reass & Nebraska

NEW POLICY - No cover charge on
Sun., Mon., Tues., Wed.,

All Tickets \$3.00

**Thursday, Friday
and Saturday**

ELDERS - America's most classical rock group
Starting next Monday: Outlaws



N.Y. Dolls - The glitter nasties that shocked the N.Y. rock houses



Get High This Summer

Why not fly for...

TWA

..Trans World Airlines is seeking stewards and stewardesses for employment this summer.

..A TWA representative will be on campus to discuss the job and answer your questions. The basic requirements are:

Over 20 years old, height between 5'2" and 6'6" with proportionate weight, excellent health, vision correctible to 20-30 or better. Applicants must be willing to relocate. Bases: New York, Chicago, Kansas City, L.A. and San Francisco. TWA will arrange your transportation to and from your base. Hourly briefings will be held at:

..1. University Center - room 203 Monday, April 7 10 a.m. - 6 p.m.

..2. University Center - room 203 Tuesday, April 8 10 a.m. - 6 p.m.

..No telephone calls, please.

An Equal Opportunity Employer.

Old library renewed

BY JOSEPH POTTER
Oracle Staff Writer

The State Legislature has allocated more than a half million dollars to USF for renovation of the basement and floors 1 through 4 of the old library building, Mike Patterson, USF architectural planning coordinator, said Monday.

No decision has been reached on when, or for what purpose, the fifth floor will be renovated. There is no money in the USF budget this fiscal year to pay for renovation of that floor, according to Bert Hartley, vice-president for finance and planning.

The old facility is expected to be vacated between Qtrs. 4 and 1, when the new \$8 million building is opened.

THE OLD LIBRARY will be used for many offices now located elsewhere on campus.

"The whole purpose of this building (the old library) is to group together student services in one place, with the exception of the cashier's function," Patterson said.

The basement of the old library now houses educational resources, the film library and some library functions. When the new building is opened, the entire basement will be occupied by educational resources, which will expand its services and occupy some of the first floor as well.

THE FIRST FLOOR will house the offices of the registrar, records and registration, the department of admissions, the community college relations organization and a small office for veteran's matters.

The University Art Gallery will



Oracle photo

**Book stacks in the old library
...soon replaced by service offices**

remain in its present first-floor location.

The second floor will contain the offices of university studies and cooperative education and placement, as well as the counseling center for human development and the office of financial aids.

The third and fourth floors will house the computer center.

A **DECISION HAS** not been made for the use of the building's fifth floor, Hartley said. Both he and Patterson said an option is being held open to make the floor a dining room for President Mackey.

Hartley said the floor may be used to provide space for the university alumni association or for the university development

function. Space might also be available for the faculty-staff annual campaign, which raises money to provide scholarships to USF students.

THE COST of renovating the basement and four floors of the library will be \$547,000.

Hartley said he didn't know how much money will be needed for work on the fifth floor because he didn't know what functions will be performed there.

A council on development and planning, consisting of the university's vice presidents, makes recommendations to President Mackey on how space on campus should be used. The final decision-making authority rests with Mackey.

Tapper Hub

Sunday Special
FREE

frosted mug of Beer or Sangria with
purchase of our famous
Hot Roast Beef

Open 10 am to 1 am — 971-7849

La Place Village

15th & Fletcher

**Not only is our receiver green -
but it will out perform yours!**

We know the harman-kardon 630 & 930 have the widest response, best square wave, & lowest distortion of any receiver in the world!

To prove this to you — if you bring in any receiver (presently in production) that will out perform those qualities of our harman-kardon — We'll give you a **FREE** harman-kardon!

No Tricks — our \$300 harman-kardon 630 will out perform any higher priced receiver! (testing done on a "crown" analyzer)

only at **STEREO WORLD**

Sensuous Sound Systems



4812 E. Busch Blvd.
988-7059

Christie's

"IF IT'S NOT RIGHT
WE'LL MAKE IT RIGHT"

4 LOCATIONS TO SERVE YOU

9240 N 56th street
988-4191

5002 W. Kennedy

901 W. Brandon Blvd.

Furniture
114 Central Dr.
Brandon 689-8188

AUTOMOTIVE SPECIALS

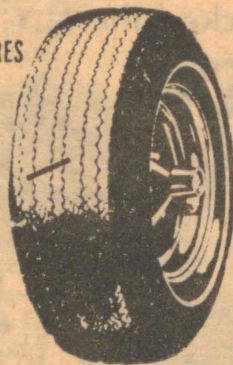
FRONT END SPECIAL

ALIGN FRONT END
BALANCE (2) FRONT TIRES
ADJUST BRAKES
CHANGE OIL
LUBRICATE CAR
ROTATE TIRES
\$26.00 VALUE
ALL FOR

\$9⁹⁷

BY APPOINTMENT

**OVER 4,000 TIRES IN
STOCK—PRICED RIGHT**



GOODYEAR TIRE SPECIAL

**STEEL
RADIALS**

**40,000
MILE TIRE**

SLIGHTLY BLEMISHED

\$37⁰⁰

Tuesday night is student night.

drinks 75¢
beer 50¢



The Library Lounge

Nebraska, just south of Fowler

classified ads

FOR RENT

RENT in a La Mancha Dos townhouse is only \$72.00 to \$90.00 per month. 1 block from campus off Fletcher on 42nd St. 971-0100.

1 bedroom studios are now available at La Mancha Dos. Completely furnished, wall-to-wall shag. \$165-month. 1 block from USF off Fletcher on 42nd St. 971-0100. TF.

SPACIOUS 1 Bedroom unfurnished \$143; furnished \$155. 2 Bedroom w-dishwasher, unfurnished \$175; furnished \$193. Central air & heat, shag carpet, pool, & laundry, pets OK. 971-1307

ONE BEDROOM furnished apartment, all electric, near I-75, one person, \$95, deposit. 238-3966.

NICE HOME in Lutz, 2 bdrm unfurn. Country living. \$125 (C1252) 4-4:
RENTX BKR FEE 238-7971

5 MIN. FROM campus. New 2 br., unfurnished duplex in wooded area. Quiet, safe, peaceful. New appliances, carpet, drapes, A-C, laundry facilities. \$150. Call Bob 988-4085. 4-11:

BEAUTIFULLY furnished 2 bedroom, central A-C mobile home in quiet wooded setting. 5 min. from campus. Gardening. Pets. \$150 includes all utilities except electricity. 988-4085. 4-11:

RENT — 2 bdrm, 2 bath new condo. Pebble Creek Village, near USF. Swim, golf, tennis, \$210-mo. 677-1114. 4-11:

NORTH TAMPA, 2 bdrm furn house w-porch. Air cond., carpeting, child & pet OK. \$150 (41502) 4-4:
RENTX BKR FEE 238-7971

PRIVATE swimming pool, 2 bdrm furn on lake w-cent AC. Pet OK. \$150 (C1502) 4-4:
RENTX BKR FEE 238-7971

NEED 2 students to sublease in La Mancha Dos Apts. for \$80-90 per month. To have a 4 bdrm furnished Apt completely to yourselves. Immediate occupancy. 971-3360. 4-11

TEMPLE TERRACE, 2 bdrm unfurn house w-fenced yard, air cond. available now. \$215 (42152) 4-4:
RENTX BKR FEE 238-7971

FOR RENT — Studio or loft space available — large high ceilinged rooms w-balcony overlooking 7th Ave. (Ybor City). Ideal work or display areas for artist. Call Rob Traviesa, 877-3933. alt (4-9-)

COTTAGE IN Land-O-Lakes, furn, pet OK. Pay electric only. \$85 (C85E) 4-4:
RENTX BKR FEE 238-7971

APTS. & HOUSES TO SHARE

FURNISHED room in air conditioned home, private entrance and bath, parking. Quiet area near USF. Upper or graduate male student only. Ph. 988-7667, after 5 p.m. 4-3:

2 BEDROOM apartment. Looking for female to share apt. Darla Jones 251-1460. 34-3:

FEMALE roommate needed for 3rd qtr. immed. occupancy. Large 2 bd., furnished apt. 2 mi. from USF. Own room & bath. A-C, pool. Call 988-6519. 4-8:

LOST & FOUND

LOST: Gold tie bar (plain) — somewhere on campus. Lost Tuesday, Mar. 11, 1975. Please return for reward. Main value is sentimental. Call 974-2309. 4-3

LOST DOG, male, Spitz, small-white husky looking. 5 mos. old, vicinity 30th and Fletcher. 971-7515. 4-4:

FOUND: LADY'S WATCH BETWEEN Business & Lan. Lit. buildings. Call 932-3516 evenings to identify. 4-4:

HELP WANTED

LOCAL Amway Distributor is helping many persons earn money working two to four hours a day. We can help you. For interview, Call 971-6689. 4-30:

PART-TIME Receptionist to work Day Shift 8 to 4 Sat & Sun, and Wed evenings 4 to 10. No typing, no shorthand. Call James Shaw, 223-3239. 4-4:

FLORIDA Insurance Underwriters needs part time help. Typing essential. Don't apply if you don't want a career. Wayne 985-4406. 4-4:

EARN GOOD income in your spare time. For further information please call after 5 p.m., 961-0606. 4-4:

PLEASANT and interesting environment. 20 hour week, OPS. Typing and shorthand skills essential. Contact Yvonne at ex. 2044 after 1:00 (Finance Review Board) or leave message at ex. 2041. 4-4:

PERSONAL

FLEA MARKET at the River Riot, Sunday, April 6. Call UC Program Office Ext. 2637. 4-4:

WANT to learn more about yourself, improve your relationships with others? Attend Transactional Analysis. Workshop, Thursdays, 3:00-5:00, Fellowship Chapel, 8 weeks - \$25. Begins April 3rd-Call Dot Wiesenfeld, 872-0459 for more information. 4-3:

7 DAYS TO C.A.U.S.E. SIGN UP in the mall between the U.C. and Admin. Building 10-3 p.m. Give what you are. It may be more than you think. 4-11:

DOES GOD Exist? Free correspondence course. Write to University Bible Chair, 12720 N. Florida Avenue, 33612. 4-4:

NEED HOUSING? Having trouble with your landlord? We can help! Stop by Student Government UC 156 9:00-5:00. 5-10

FOR SALE

DESK, BUTCHER block type. Perfect cond. Must sell. \$15. Call Craig 977-1267. 4-4:

TV, RADIO, STEREO

STEREO, QUAD & P.A. COMPONENTS. All makes and models available at best prices in town. Contact Infinity Distributors Inc. at 971-0090 serving USF community for six years. 4-22:

SERVICES OFFERED

ACCREDITED courses in Bible and religion. 3 Quarter hours for four dollars. University Bible Chair, 12720 N. Florida Avenue, 33612. 4-4:

TYPING—Theses, dissertations, term papers, IBM. Fast, neat, accurate. Turabian, APA. 5 minutes USF. Nina Schiro-971-2139.

RENT AN IBM typewriter. \$19 mo., deposit required. Tampa Business Machines, 839-1004. R 4-24:

NEED A baby sitter? Want to baby sit? We put parents in touch with sitters. Stop by S.G. UC 156 or call 974-2419. 4-10:

YOUR NEW Student Government has created a new community service. If you type, repair cars, do electrical repair, or offer any other service.

OR
If you can make use of these services, contact Student Government- We'll put you in touch with each other. CTR 156, 9-5. 4-10:

MOTORCYCLES & SCOOTERS

1973 HONDA CB 450. Low mileage. Real clean. Luggage rack, highway pegs. Great gas mileage. Call Rodger after 6:00. 986-3193. 4-10:

YAMAHA 152 100cc Twin, 72, very good condition, 4850 miles, For \$250 including, or best offer two helmets. 971-1991. 4-10:

MOBILE HOME SPACES

WOODED Mobile Home lot for rent. 5 min. from campus. Quiet, tranquil, safe. Gardening & pets ok. Call Bob 988-4085. 6-6:

AUTOMOTIVE

USED TIRES, all sizes from \$5 at Christie's. 9240 N. 56th St. Temple Terrace, 988-4191. 4-3:

1965 MUSTANG—White with red interior—Radio, 3 speed. \$350.00 or best offer. Call after 5:00 626-3459. 4-4:

CLASSIC dune buggy, metal flake blue. 56 hp. For Sale, moving soon have to sell. Call after 7 p.m. 971-1107. 4-8:

1970 OPEL Kadette. A steal at \$700 or will take best offer. Marcia 977-1331. TR 4-8:

**TEMPLE TERRACE
CUT RATE LIQUORS**
5303 E. BUSCH BLVD.
Open 'til Midnight
**TEMPLE TERRACE
LOUNGE & PACKAGE**
8448 N. 56th STREET
Open 'til 3 AM

ANNOUNCEMENT

WESTERN STATE UNIVERSITY
COLLEGE OF LAW
OF ORANGE COUNTY
CALIFORNIA'S LARGEST LAW SCHOOL

FULLY ACCREDITED BY THE COMMITTEE OF BAR EXAMINERS OF THE STATE BAR OF CALIFORNIA

OFFERS A CHOICE OF FOUR PROGRAMS OF LAW STUDY:

- IN EITHER 2½ or 3 YEARS of FULL-TIME law study (15-16 classroom hours per week), or
- IN EITHER 3½ or 4 YEARS of PART-TIME day, evening, or weekend law study (3 classes per week, 3-4 hours per class),
- You can earn your JURIS DOCTOR (J.D.) degree and become eligible to take the CALIFORNIA BAR EXAMINATION.

WRITE FOR CATALOGUE

Dept. AN

1111 North State College Blvd.

Fullerton, CA 92631

(Coordinate Campus,
Provisionally Accredited,
at 1333 Front St.
San Diego, CA 92101)

FALL SEMESTER BEGINS AUGUST 28, 1975

ALL PROGRAMS ALSO START IN JANUARY 1976

STUDENTS ELIGIBLE FOR FEDERALLY INSURED STUDENT LOANS

APPROVED FOR VETERANS

be King in our jungle



Safari
Restaurant and
Voodoo Lounge

With this coupon and a
reservation.

ph. 932-4397

• 9302 30TH ST. (WEST SIDE OF BUSCH GARDENS)

Fri. & Sat. only
2 for 1 dinner
\$5.95

Safari sirloin

The most talked about
salad in town, tossed at
your table.

...Baked potato...Rolls
& Butter

April Shower of Savings

For USF Students & Faculty

15% off parts & labor thru April 30th

KOONS FORD Service Dept.



9545 N. Fla. Ave.

933-7647



for your convenience

30%
Discount

on

top of the line

Sportsways

Waterlung

Parkway

Seascope of Tampa

8030 N. Nebraska Ave.

933-7511

Scuba Sale

Tanks

Regulators

Wet Suits

We Will Not Be Undersold!

LET US BE
YOUR
WHEELS.

BUSES NOW LEAVE DIRECT
FROM NORTH TAMPA

Atlanta	\$26.25 ow
Jacksonville	10.45 ow
Fl. Lauderdale	13.85 ow
Miami	13.85 ow
Gainesville	7.10 ow

NEW Greyhound Bus DEPOT
14930 North Florida Avenue
935-9484

Greyhound
A change for the better.

Continued from page 1

The senate resolution will go to Vice President for Academic Affairs Carl Riggs, who is collecting recommendations from faculty members and students on the desirability of mandatory summer enrollment.

President Cecil Mackey has already gone on record along with other university presidents opposing the measure. Riggs has said that summer enrollment would certainly help increase summer productivity but that students shouldn't be forced to go to school during a specific quarter.

The proposal appears on the agenda for the Regents' Monday

meeting, but Chancellor Robert Mautz has recommended against consideration. He advised the Regents to postpone a decision until the universities have had more time to consider the impact of mandatory enrollment.

—Tabled a motion that would have directed members of Mackey's Contingency Budget Planning Task Force to fight any faculty terminations and demand due process for any terminated faculty members. Supporters said the motion would show the senate's support for the task

force members but opponents argued that the motion was a waste of time since the task force has already met several times.

—Voted support for the inclusion of the university registrar on the University Committee on Committees. Francis said the registrar is needed to provide information to the committee.

—Formed a committee to urge Riggs and the registrar to allow teachers two working days after the end of each quarter in which to submit grades to the registrar.

Scholarship

Continued from page 1

year fund aims to "recognize students who have distinguished themselves at USF."

Each college's faculty members will select their scholarship recipient.

Awards will be made at the end

of this quarter, but the students will not receive the money until Qtr. 1.

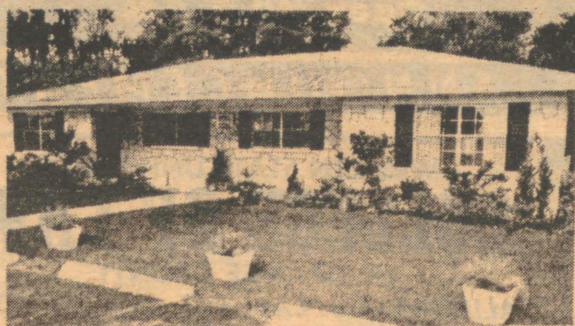
Anyone who would like to make a contribution and can not get it in by tomorrow may forward it to ADM 109, Ray said. Contributions are taken in the form of checks, cash and payroll deductions.

Students not turned away

The Health Center won't turn away students who haven't had their ID cards validated for the current quarter, Director Larry Stevens said Monday.

"That's part of our obligation to students," he said. Students must pay their tuition and health fee before their ID's can be revalidated. But Stevens said he understands that some students will choose not to pay fees until they have dropped and added courses.

The drop-add deadline is tomorrow. Stevens said last quarter's validations will be accepted at least until then.

WOODGREST
1 STORY VILLAS

2 BEDROOMS FROM \$145-MO.

Ideal for Roommates

On 50 Landscaped Acres

Over 900 SQ. FT. Living Area

Individual Outside Storage Area

Recreational Building

2 Oversized Pools

Pets Welcome

Fletcher Avenue, Just 1 Block East of 56th Street

988-0037

988-0021

food
gamesDEPOT
14985 N. NEBRASKA
TAMPA FLORIDAbeer
wine

Tonight Thru Saturday



Rosewater Blue is a blend of talent and southern spirits that results in a musical statement both entertaining and thought provoking.

Tonight

Ladies FREE

5¢ Beer

ATTENTION STUDENTS!

Are You Tired Of Filling Out Forms?

Are You Tired Of Driving Across Town?

Then QUIT SPINNING YOUR WHEELS

Filling Out Forms and Coupons:

Our Rates Are Published

OR

DIAL-A-RATE

AGES 19-24 ONLY

Compare Our

A+AAAAA

Company

Ratings

Rates!

Finance
Plan
Available

10/20/5 Male Drivers

With Driver Ed. or Presently Insured

Single

Married

Age

Age

Age

Age

19
20
21\$139⁰⁰22
23
24\$133⁰⁰19
20
21\$106⁰⁰22
23
24\$104⁰⁰

Hillsborough Liability

Age
19-21
22-24

Points

3 Speeding Tickets & 1 Accident
2 Accidents & 3 Speeding Tickets

Cost

\$254.00
\$266.00

Florida Insurance Underwriters

Your
Independent
Auto, Life
And Casualty
Agent

These Are ANNUAL RATES

Call Wayne 985-4406

56th & Busch

8862 A
Terrace Plaza
Shopping Center
Temple Terrace
Florida