

11-13-1980

The Oracle, November 13, 1980

Michael Dunn

Follow this and additional works at: https://digitalcommons.usf.edu/usf_oracle_spc

Recommended Citation

Dunn, Michael, "The Oracle, November 13, 1980" (1980). *The Oracle (Print Editions)*. 636.
https://digitalcommons.usf.edu/usf_oracle_spc/636

This Book is brought to you for free and open access by the USF Oracle Archive at Digital Commons @ University of South Florida. It has been accepted for inclusion in The Oracle (Print Editions) by an authorized administrator of Digital Commons @ University of South Florida. For more information, please contact digitalcommons@usf.edu.



thursday's ORACLE

November 13, 1980 Vol. 15 No. 108 28 pages

Weather

Partly cloudy through Friday. Lows from near 60 to mid 60s. Highs near 80 today and low 80s Friday. Winds becoming easterly around 15 mph today.

Search for dean of medicine over

By GWEN BAUMANN
Oracle Staff Writer

Andor Szentivanyi was named dean of the College of Medicine Wednesday, USF President John Lott Brown announced at his first open forum meeting this quarter.

Szentivanyi, who has served as interim dean of the college since January, was appointed to the position after a search committee unanimously recommended him, Brown said.

"(When a person takes over a temporary position) the job is often handled on a level of caution. Under these circumstances little usually happens. It is a holding position," Brown said.

"That is not what happened in this case. Andor Szentivanyi moved into the role and accepted the responsibilities. Much

positive has happened in the College of Medicine in the last year," he added.

Szentivanyi said his main objective as dean is "to see the development of a university-based medical school, as contrasted to a hospital-based medical school."

"There is an enormous difference between the two approaches to building a medical school," Szentivanyi said.

The dean also said he would like to see a basic philosophical change in the college's curriculum.

"I would like to develop an experimental curriculum that would make it possible to gradually transform our current school into something which would be designed similar to a College of Arts and Sciences."

"A medical student in the

United States of America has less academic freedom than a student in the ninth grade. No student has the chance to decide his own curriculum," Szentivanyi said, adding that he hopes to change that.

Szentivanyi competed for the dean position with James Castles, of the University of California School of Medicine at Davis; Colin Campbell, of the School of Primary Medical Care at the University of Alabama; Robert Daniels, of the University of Cincinnati College of Medicine; Richard Kessler, of Michael Reese Hospital in Chicago and Leah Lowenstein, of Boston University's School of Medicine.

Following the announcement of Szentivanyi's appointment, Brown spoke about the distribution of USF's \$1.19 million

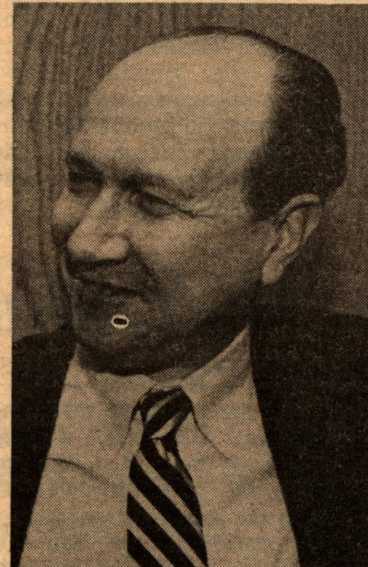
in faculty pay increases.

"If all goes well, the money will be available Friday, Dec. 19," Brown said. "By Dec. 23, the money should be in (faculty members') paychecks."

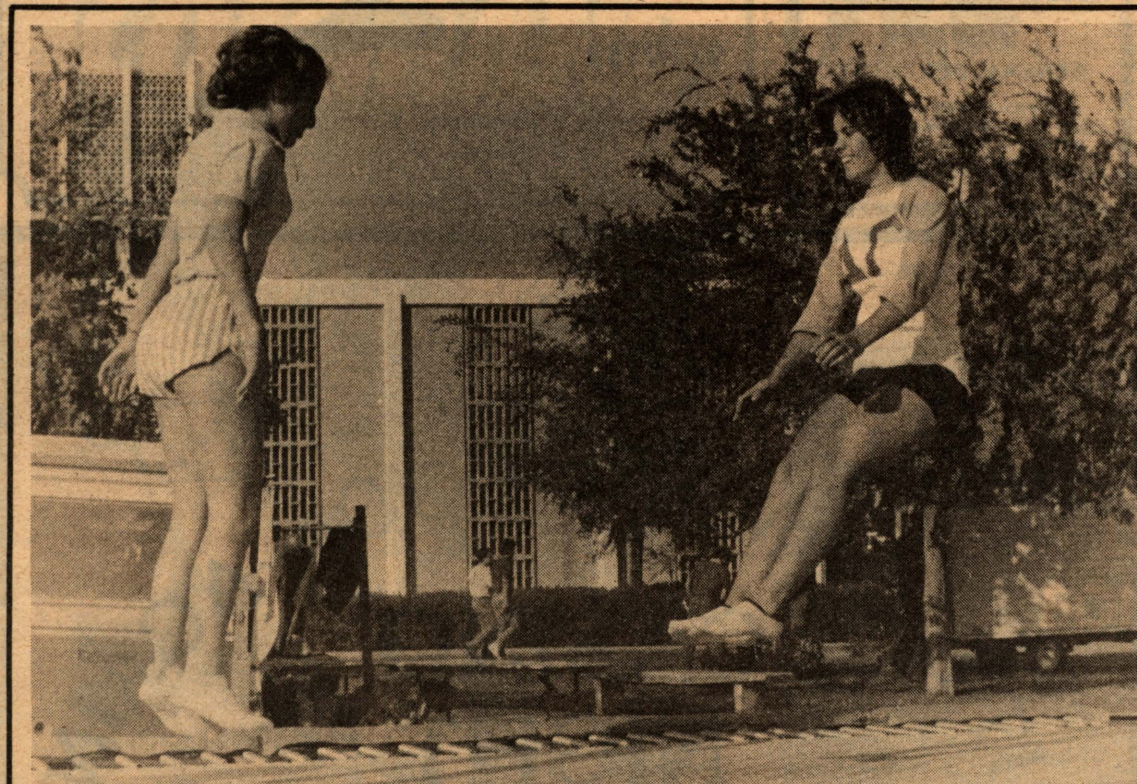
The president said USF administrators and professional staff will not receive pay increases, which are retroactive to September.

"We have looked at what the (Florida) Legislature said in terms of class, marketplace and experience," Brown said. "We've gotten recommendations from the United Faculty of Florida and legal interpretations and found that deans, assistant vice presidents, associate vice presidents and vice presidents are not included (in the appropriation)."

"Under the master plan, (the See FORUM, page 10



Andor Szentivanyi
...dean of medicine



Oracle photo by Linda Bogumil

Bouncin' buddies

Michelle Halpern (left) and Sandy Reichle of the Delta Gamma sorority jumped on a trampoline for one hour Wednesday to raise money for blind services. More than \$560 was pledged for the blind before the 24-hour jump-a-thon began Wednesday at noon. The trampoline is set up on the University Center mall.

Committee seeks viable answer to housing shortage

By MICKEY SELZ
Oracle Staff Writer

Housing representatives from Florida's nine state universities plotted a financial course to end critical housing shortages during a quarterly conference this week at Chinsegut Hill, a retreat near Brooksville owned by USF.

The Inter-Institutional Committee on Student Housing conference ended Wednesday with the committee deciding a low-interest loan from the Florida Legislature was the only viable answer to the present housing crunch, according to Ray King, USF director of housing.

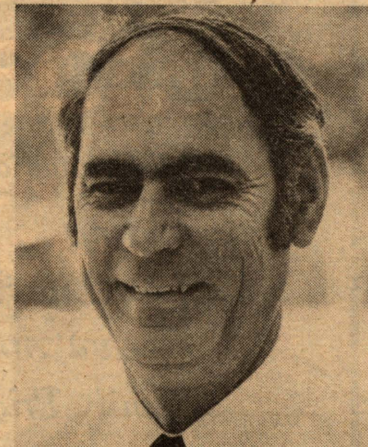
"The committee reviewed all the potential sources (for funding) and the only viable source is for the Legislature to set up a loan fund," King said.

"It is terribly important for all of us to get the news up to the Legislature that we have a critical (housing) shortage here and that it's going to get worse," he said.

This fall the University suffered the worst housing shortage in its 21-year history when about 1,000 students decided not to attend USF after they were turned away from campus dormitories, University officials estimated.

King attributed this year's crunch to increased enrollment, the rising cost of off-campus apartments and the conversion of many local apartments to condominiums.

King said the Legislature has already passed a law setting up a fund to finance university housing but neglected to allocate any money for the fund.



Ray King
...housing director

King said the committee met at the USF retreat to organize support for the funding of a state loan program. "We discussed how we are going to present our case to the Legislature," he added.

King said the interest of the committee is to secure funding for additional student residences, but he added that the plan must keep the cost of housing in the range students can afford.

"A loan at 11 or 12 percent (interest rate) would provide housing neither you nor I could afford," he said.

King said the plan would be based on funding all the universities jointly, rather than individually. He said allocating the loan among the nine universities according to need "will be a very difficult decision." He added that a committee would be set up to divide the funds if the money is

See HOUSING, page 9

Faculty senate approves proposed semester calendar

By KATHY SUBKO
Oracle Staff Writer

The USF faculty senate approved Wednesday a proposed calendar for the 1981-82 school year under the new semester system.

USF will join Florida's nine state universities in converting to the semester system next September, but the exact dates for

classes have not been officially decided.

With the faculty senate's approval of the calendar, William Scheuerle, USF associate vice president for academic affairs, said he will submit the proposed calendar to USF President John Lott Brown and his staff for approval next week.

The USF Student Government was asked to make recom-

mendations on the proposed calendar, but SG President Shaune Einbinder said the SG office just received a copy of the proposals last week.

Scheuerle said the copy Einbinder was referring to was the second copy he sent.

Scheuerle said the University has to follow state guidelines requiring a certain number of

See SEMESTER, page 15

St. Petersburg youth saves woman's life

ST. PETERSBURG — Erik Raymond, a teen-ager knocked unconscious as he risked his life for a stranger, showed signs of improvement Wednesday and his father said, "It feels good."

"I was nervous, but I feel some relief now that he's showing signs of recovering," said Earl Raymond as he came home from one of his frequent hospital visits.

Erik, 18, regained consciousness Tuesday night, three days after he jumped in the path of a 40-pound tire flying at about 70 mph and shielded a woman spectator at a race track.

The wheel was hurtled 30 feet in the air, flying over a 15-foot protective fence into the bleachers over the pit area, after a collision at the Sunshine Speedway Saturday night, packed with 4,000 fans. No one was injured in the car wreck.

Raymond didn't know Donna Altieri, the 33-year-old mother of four sitting next to him in the top row. She saw the tire coming, she said, and froze.

"I said to myself, 'This is it. This is the end. This is your ticket out.'"

"Then suddenly Erik was there.

He covered me like a blanket. He was willing to give his life for mine," she said. "I can never repay him."

The wheel smashed Raymond in the head, slamming him face down into the seats. He stopped breathing and had to be resuscitated.

At Hubert Rutland Hospital, spokeswoman Carol Peterson said Wednesday the youth's condition was upgraded to stable and satisfactory, but he remained in intensive care.

"He drifts in and out of consciousness," said the elder

Raymond.

"It's going to take time. He seems to show some response to our voices.

"But he doesn't make — what I call recognition. He doesn't open his eyes and say hello."

Raymond said doctors are encouraged, but still don't know the extent of damage or whether there will be permanent impairment. Further testing is needed before that can be decided, he said.

The recent high school graduate is the Raymond's only child.

"Our only concern is for him to recover. We don't know how long it will be," said Raymond, trying not to let himself get too optimistic yet.

He has not worked during the three-day ordeal. But when he returns to the job Thursday, he said, he'll still be able to see his son often. He's a mechanic at the same hospital.

Hurricane Jeanne weakening

MIAMI — Hurricane Jeanne, perhaps the rarest of the rare November hurricanes, drifted slowly over the Gulf of Mexico Wednesday as chilly waters sapped the storm's strength.

Forecasters at the National Hurricane Center in Miami said Jeanne was moving west at about 5 mph with sustained winds of 75 mph, just 1 mph above the official hurricane level.

At 11 a.m. EST today, the storm was centered near latitude 24.0 north, longitude 89.5 west, about 400 miles south of New Orleans.

Jeanne, the first Atlantic-area hurricane to form in November since 1966, was farther north and west than any November tropical storm ever recorded by the Hurricane Center.

"We've had a few in the Gulf before, but never one that's made

it this far north and west. Our records go back to 1886," said forecaster Gil Clark.

The unusual storm was not expected to have a long life.

"We think it's going to weaken, because it's completely surrounded by dry air from a front that's pushed from behind, plus the water temperature is rather cool," Clark said.

Clark said it was doubtful that the storm would reach land with any significant force.

"Everything's against it. It probably won't make it to land," he said.

Clark said the last November hurricane was Lois, which developed in the Atlantic Ocean in 1966. The last tropical storm was Laura, which developed in 1971 in the western Caribbean.

On Tuesday, oil companies evacuated thousands of workers

from rigs and work barges in the Gulf of Mexico.

Chevron USA Inc. said it had evacuated 1,000 offshore workers by Tuesday night. Other oil companies said they were closing down some operations and bringing in all but the minimum number of workers required to keep other operations going.

Lesley M. Anderson,
D.D.S.
GENERAL DENTISTRY
UNIVERSITY PROFESSIONAL
BUILDING
3500 FLETCHER AVE. SUITE 129
TAMPA, FLA. 33612
BY APPOINTMENT (813) 971-6300

NO GREAT REASON SALE

(When is Millard Fillmore's Birthday?)

Nike Player
Adidas Hi Point
Converse ABA

Nike Bruin Canvas
(Red Stripe)
Nike Blazer
Canvas

No one knows
athlete's foot like the



977-7159

University Square Mall

(Next to J.C. Penney)

Monday-Saturday 10 am-9 Sunday 12:00-5:30

SEA WOLF

Restaurant and Lounge

Featuring

Live Entertainment

Elegant Atmosphere

Family Prices

Happy Hour 4-7pm

drinks 2 for 1

4115 E. Busch Blvd.
1 block east of Busch Gardens
985-5506



IT'S COMING SOON AGAIN

CASINO
NIGHT

"WESTERN"

Sponsored By

THE INTERFRATERNITY COUNCIL

NOV. 13, 1980

7:30 pm

U.C. GRAND BALLROOM

Admission Donation: \$1.50 Advance
\$2.00 At Door

WITH PICTURE I.D. AT DOOR

Free Beer & Prizes

"PROGRESS THROUGH GREEK UNITY"

The Oracle is the official student-edited newspaper of the University of South Florida and is published five times weekly, Monday through Friday, during the academic year period mid-September through mid-June; three times weekly during the academic year period mid-June through mid-August, by the University of South Florida, 4202 Fowler Ave., Tampa, Fla. 33620

Opinions expressed in the Oracle are those of the editors or of the writer and not those of the University of South Florida. Address correspondence to the Oracle, University of South Florida, LET 472, Tampa, Fla. 33620.

The Oracle reserves the right to regulate the typographical tone of all advertisements and revise or turn away copy it considers objectionable.

Programs, activities and facilities of the University of South Florida are available to all on a non-discriminatory basis, without regard to race, color, creed, religion, sex, age, national origin or handicap. The University is an affirmative action Equal Opportunity Employer.

DEADLINES: General news 3 p.m. daily for following day issue. Advertising, 5 p.m. Tuesday for Monday issue, 5 p.m. Wednesday for Tuesday issue, 5 p.m. Thursday for Wednesday issue, 5 p.m. Friday for Thursday issue, 5 p.m. Monday for Friday issue. Advertisers requiring proofs must submit copy one day prior to normal deadline. Classified ads taken 8 a.m. to 5 p.m., LET 472, two days before publication in person or by mail with payment enclosed. Advertising rates on request, 974-2620, Monday through Friday, 8 a.m. to 5 p.m. Stories and pictures of interest to students may be submitted to the Oracle in LET 472 or through the suggestion boxes in the Library and UC.

This public document was promulgated at an annual cost of \$378,833.87 or \$1.16 per copy, including preparation, printing, and circulation, to disseminate news to the students, staff and faculty of the University of South Florida. (Eighty-eight per cent of the per issue cost is offset by advertising revenue).

(81-009)

SAFE team escorts students walking at night

By DIANE DANIEL
Oracle Correspondent

Even if students never need the escort service of USF's SAFE team, they may want to walk with team members just once to experience the feeling of security and freedom the service provides.

Instead of having to watch shadows or listen for footsteps and voices, students can relax and enjoy the walks across campus at night because of the team.

The SAFE (Safety Afoot for Everyone) team is a service provided by Student Government. They are located in the SG office in CTR 156.

"The primary function of the

SAFE team is to escort students, faculty and staff from one destination on campus to another," said Bethany Buckley, SAFE team director and a USF student.

The SAFE team works from 7 to 11 p.m. Sunday through Thursday. Five of the 38 employees work each night, including two teams of two persons each and a dispatcher who stays in the SG office to receive phone calls and to give teams pickup orders via walkie-talkies.

Buckley said the teams cannot work past 11 p.m. because the University Center closes then. She said there is a possibility that the team may receive extra funding to allow escort service on weekends.

The SAFE team, established in 1976, is funded by SG.

"For the first time in three years, we have a good budget," said Buckley. She said SG and USF administrators have been

supportive of the service. "As long as the problem of physical and sexual assault persists, support should not be a problem," she added.

Buckley said another important function of the SAFE team is to survey on foot all areas of the campus.

"We are an extra pair of eyes for the UP (University Police)," Buckley said. She said if the SAFE team sees any crime committed or any suspicious-

looking persons, it immediately contacts the UP.

Randy Gonzalez, UP crime prevention officer, said the SAFE team has "reported activities occurring that might never come to our attention. They offer an additional resource to prevent assaults and crimes."

Gonzalez said there have been two reported sexual assaults and four reported physical assaults on campus since May.

Besides escorting persons, the SAFE team will also accompany anyone having to wait on campus for any reason.

Buckley said a lot of people do not know about the SAFE team, especially commuters. She said many commuter students could use the SAFE team because they often have to park in remote lots.

"I would like to be sure that all students know about SAFE. There are some people that will

See SAFE, page 18

Scuba Club ends backgammon

The underwater backgammon record of 125 hours of continuous play now belongs to USF.

Steve Price, president USF Scuba Club, and former president Chris Janks, were the last divers to rise to the surface of USF's Argos pool at noon Monday, ending the six-day event.

The former record of 101 hours was held by the University of Maine at Orono.

Donations collected during the club's underwater marathon will go to USF's United Way campaign, Price said. The amount has not been tabulated yet.

Tampa
Woman's
Health Center Inc.

UNPLANNED PREGNANCY?

• Abortions up through 20 Weeks
Nitrous oxide available upon request at no extra charge.

• Free Pregnancy Test
• Individual Counseling
• Birth Control Clinic
Pap Smears
Diaphragms
I.U.D., Pills

977-6176 3004 Fletcher Ave.

WESTERN NIGHT

Nov. 15 at 8:00

UC Ballroom

\$2.00 Donation Includes:

CONTESTS

dancing

costume

Moustache-judging

calf roping

DJ from WQYK - FM

Contest Prizes

"Refreshments"

Door Prizes

"Gambling"

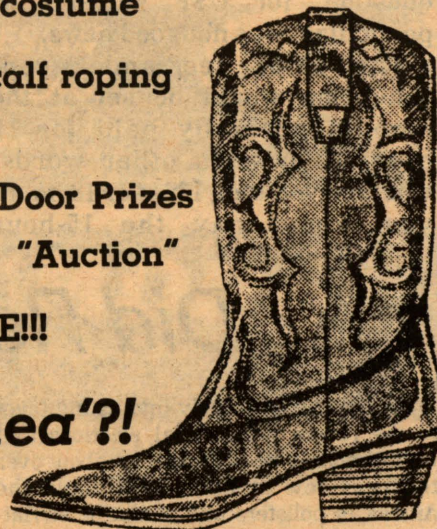
Plaques

"Auction"

... AND MUCH MUCH MORE!!!

Y'all come now, ya hea'?!

Sponsored by: Pi Sigma Epsilon
The Professional Marketing Fraternity



AUDIO LINEAR • CONNOISSUER • DCM TIME WINDOW •

Bought
expensive speakers?



Better not listen to ours!

However, if you're looking for incredible sounding speakers at an affordable price, by all means do!

polkaudio
Monitor Series Loudspeakers



AVAILABLE AT...

Hart's Audio & Video

Tampa Bay's only true high-end audio store

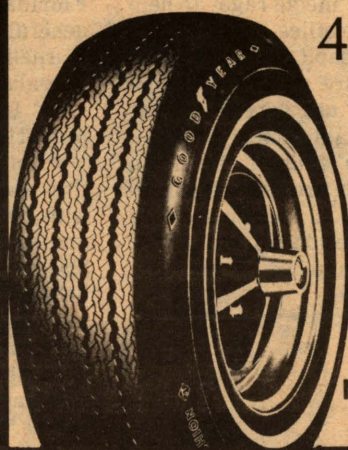
10941 N. 56th St.
Tampa, Fla., 33617
(813) 985-6084
Sherwood Forest Center



Also Located at:
801 Mason Ave.
Daytona Bch, FL 32017
(904) 255-1486

THRESHOLD • GRACE • KEF • AUDIRE • GRACE • HAFLER •

NEW U. S. F. Tire Sale !!
GOODYEAR



4 PLY POLYESTER WHITEWALLS

G78x14

OR

G78x15

\$37⁵⁰
ea.
Plus F.E.T.

NEW FIRST QUALITY GOODYEAR TIRES!!
NOT BLEMS — NOT SECONDS — NOT AN UNKNOWN NAME.



—GUARANTEED—
FACTORY RETREADS

from \$11.95 up

With Recappable
Trade In and F.E.T.

USED TIRES



\$8⁰⁰
UP

MOST SIZES IN STOCK

GOODYEAR



A78x13
POWER STREAK
Blackwalls
\$25⁰⁰
ea.

FREE MOUNTING Plus F.E.T.

Confidence Starts Here

GOODYEAR

KING TIRE OUTLET

7026 N. 40th ST

CALL 985-3447 or 988-6723



VISA

Uniform tuition fee unacceptable

A uniform tuition fee under consideration by the Board of Regents may be unfeasible for USF's student population.

The block fee, which was proposed by a BOR task force for implementation next year, would create a uniform fee for any student taking 12 to 18 hours.

The single fee would not entail an actual increase in tuition, according to student regent Gerald Sanchez. Indirectly, however, USF students might end up paying more.

USF President John Lott Brown, who attended the meeting where the block fee was discussed, questioned the cost of the fee. The answer to that question, for USF students in particular, was not good news.

The block fee under consideration would be set at the amount normally paid for 15 credit hours. In other words, whether you took 12, 14 or 18 hours you would pay the 15-hour

uniform fee.

Ideally, the effects of the proposal would balance out, as some students would get more for their money by taking more classes and some would get less for taking fewer hours.

While such a fee might make sense for schools such as the University of Florida or Florida State University, which have predominantly full-time students, here at USF it's another story.

With such a large percentage of USF students coming from the community and either working or having families in addition to attending classes, the problem for USF is immediately evident.

The fee is a direct reward for those who can take more credit hours each quarter or semester, and it is certainly discriminatory against those who must take fewer hours because of other obligations.

While it is obvious whom the fee would benefit, other implications

may not be quite so obvious.

With more and more students entering Florida's universities, the proposed fee is an indirect encouragement for students to complete their educations as quickly as possible. In the case of higher education, we feel the quickest way is definitely not always the best.

A problem of space may well exist, and, while the block fee might encourage students to take more classes and thus to graduate sooner than might otherwise be the case, the BOR must carefully examine exactly what it is they want to encourage.

While the reasons for instituting a block fee were quoted to be "administrative, incentive and competitive reasons," we question whether any of those reasons would actually serve to benefit the students.

Another proposal, suggested by Tampa Regent Terrell Sessums,

would limit the hours included in the block fee from 12 to 15.

"If the state made it clear that the block fee would be the same as the charge for 12 hours, then nobody would feel very bad about it," Brown said. "They would pay no more and be able to get more credit."

While such a proposal certainly seems to be to the student's benefit, we question how long it would be before the block fee would be raised and USF students would once again end up on the short end of the deal. Once such a policy is implemented, it certainly would not be naive to expect a raise in the fee as educational costs continue to rise.

We encourage the BOR to look carefully at the potential effects of the proposal not administrative effects, but effects on the students who pay the fees. Students are, in theory, getting what they pay for. We suggest the BOR keep it that way.

Did Reagan win because of media bias ?

There is an extremely interesting facet to the recent presidential elections that we'll probably be hearing a lot about over the next few months: how could the American pollsters and media be so flat-out wrong? It was supposed to be the titanic struggle of the century. A replay of the Carter-Ford and Humphrey-Nixon cliffhangers. A too-close-to-call election with everyone on the edge of his seat.

So what happens? Reagan immediately establishes himself as a winner and trots off with an absolute majority of the votes, despite the presence of third-force candidate John Anderson. The national networks started to report the election returns at 7 p.m. Tuesday. By 8:15 it was all but over, and Carter was already talking of calling Reagan with congratulations. By 8:30, with Florida, Pennsylvania, Ohio and a couple of southern states already declared for Reagan, the landslide mandate began to take form. The faces of the television commentators reflected it. Their jaws were dragging on the floor. They were not happy. Which quite nicely points up what I

Observations by Tim Condon

think was wrong with the media: they believed their own propaganda.

It's no secret that the "boys on the bus" consider themselves the smartest arbiters of politics on the American scene. They have much power, power to shape public opinion. In an extreme case, they can summon up what columnist Nicholas Von Hoffman has called a "media rage" to help drive a president from office.

The people who inhabit and control the media in America are generally of one political mind. They are generally what might be called "establishment liberal." At least those who control the main sources of information are the "establishment media," which did much to bury Barry Goldwater's presidential bid in 1964. That is, the three national networks, ABC,

NBC and CBS; the New York Times; the Washington Post; the Los Angeles Times; Time and Newsweek magazines; and the two wire services, United Press International and Associate Press.

This pervasive bias was studied and documented by Edith Efron, who wrote "The News Twisters," an account of media bias in the 1968 presidential election. She followed up the account with "How CBS Tried to Kill a Book," after CBS tried to do just that with a smear campaign against her.

To tell the truth, it's not that surprising to me: I hold a bachelor of science degree with honors from the University of Florida. It was no secret among the general journalism student body and the journalism faculty that establishment liberalism and the Democratic Party were "in." I mean, that's what you were expected to do, to be, to say... and to write.

When I had the opportunity to discuss this phenomenon of national media bias with Efron, she shrugged her shoulders and said, "It's just historical accident." She meant that the type of people who believe in establishment liberal values — more taxation, bigger and more intrusive government, pervasive regulation, larger bureaucracies, etc. — were just the ones who happened to go into journalism as a career. Now they happen to control the

ways and means of public debate in America.

I hope she was right. A more melancholy analysis of the historical situation might conclude that the kind of people who are drawn to journalism are the kind of people who generally hold those types of political beliefs. You know, they want the government — with their people in power — to take the reins, to take control and tell people what's good for them and what they must do to... well, to be good little cogs in the government machinery. I do know that I saw a tremendous amount of this type of arrogance among the student journalists I worked with. Anyone who disagreed with their political prescriptions was often instantaneously labeled a fascist or, worse, morally degenerate.

If that's the case, is it any wonder that the mainline media in America couldn't call the election right? Blinded by their own bias and arrogance, titillated by the prospect of a good showing by a candidate created by the media — John Anderson — they totally missed the mood of the American people.

That mood, by the way, was for total house-cleaning, a change in government, a change in the manner of government, a change in attitude.

Now we shall see what happens.

ORACLE

Associated Collegiate Press
All-American



Society of Professional Journalists
Mark of Excellence

Columbia Scholastic Press
Medalist Rating

Editor-in-Chief
Michael Dunn

Entertainment Editor
David Okamoto

Adviser
Leo Stalnaker

Advertising Manager
Sandy Pratt

Sports Editor
Cary Waldman

Advertising Coordinator
Al Fleming

News Editor
Roslyn Averill

Photo Editor
Walt Batansky

Production Manager
Joe McKenzie

Copy Editor
Laura Nailen

Don't judge manager by costume party

Editor:

My comments are directed to the individual who ridiculously accused the Greenery Pub of being mismanaged.

How can you base a manager's capabilities on a judgment of a drunken costume party? This only shows me that you know about as much about management as Napoleon knew at Waterloo!

Having managed and tended bar for several years in nightclubs, restaurants and pubs, I feel my knowledge about his subject is quite formidable. Have you ever heard of quality food and drink at a very

reasonable price? Or a "happy hour" lasting from 12 to 6 p.m. five days a week?

The Greenery Pub has THE coldest draft beer in Tampa town, and the service is courteous and friendly.

These are major qualities that the majority of consumers at a pub enjoy. This all comes about as a result of good management.

In closing, I suggest the author of those past accusations learns how to manage and formulate his opinion before making such ludicrous comments.

J.D.C.
Man-Mkt

He and she say SAGA a rip-off

Editor:

More than a week ago SAGA "ran out" of 32-ounce beer cups. Patrons were told the cups were on "back order."

The cost of a 12-ounce "Lite" beer is 5.416 cents per ounce. The 20-ounce size is 5.25 cents per ounce, and the size cup that SAGA conveniently ran out of, the 32 ounce, is 4.375 cents per ounce.

Isn't it odd that the "back ordered" size is also the best buy?

We wonder if this is an instance of SAGA "ripping off" students, staff and faculty. The reason we believe this is a rip-off is that SAGA management refuses to give a 20 ounce and a 12 ounce in

lieu of the 32-ounce cup. People have approached the bar with used 12-ounce and used 20-ounce cups and were told by the bartender that they could not have 32 ounces at the 32-ounce price, on order of the management.

We are tired of being ripped-off by SAGA and we want it to stop.

Jennifer Ann Brannon
Mike Carden

In response to Ted Hoffperchild

Editor:

In response to Ted Hoffperchild's column:

So, Ted. You want men to be men again, do you? Feeling a

little threatened by women's cage rattling, are you?

Hey, fine. I'm all for it. Go ahead, take your place as men — the natural leaders of humanity. I won't object, as long as you are stronger, smarter, more competent, more able to cope, to lead, to excel, than I am. I'll acknowledge superiority when I encounter it.

But — did the Bucs lose to the Steelers because the Steelers were "too aggressive" and "forgot their place"? Or, did the Bucs lose because the Steelers played a better game? You see what I mean, Ted? It's performance that counts, isn't it?

You say the sexes should stop warring and begin to work together. Since women have not yet been granted full, equal

citizenship, that would mean women should stop fighting for equality. Hmm.

Are you saying you can't hold your own as a man if women get equal footing?

I can't help but think, Ted, that if the idea of women achieving equal citizenship is such a threat, then maybe you've got a problem.

Sincerely,
Nancy Silva
4, English Ed

Invite
customers
to your store
with an
Oracle ad
974-2620

JOIN MENSA

The High I.Q. Society

SAT: 1250 — GRE: 1250
GMAT: 95% — LSAT: 662

CALL: (TAMPA) 251-4778
(ST. PETE) 895-5335 (SARASOTA) 924-7105

Are you safe?

Protect yourself with
"Paralyzer"

Chemical Defense
Weapon



• In the wake of soaring crime rates a new product the "PARALYZER" has been instrumental in defending its users from assaults, rapes and other violent crimes.

• The "PARALYZER" has been editorialized in NBC, ABC, and CBS television, in major newspapers and national magazines, as a precision instrument that will instantly stop even a 300 lb. man up to twenty minutes, including individuals under the influence of alcohol and/or narcotics.

• Twice the strength of competitive aerosol devices.

• Fast, simple, easy to use.

• Causes assailant no permanent injury.

• Performs perfectly in cold or hot weather.

• Non Flammable and Non-Lethal.

• Nozzles and valves won't clog.

• 5 (Five) Year Guarantee.

• Perfectly Legal.

• Comes with free leather holder and key ring.

Please send me PARALYZER
Tear Gas Units at only \$8.95 each
(postpaid). Enclosed is my check or
money order for

Name

Address

City-State-Zip

Protection Products Co.

P.O. Box 675

Tampa, Fla. 33601

Dance

premiere works by

Janet Brody

Fiona Fairrie

Bill Hug

Henry Parrish

UNIVERSITY THEATRE
THURS.-SAT., NOV. 20-22, 8 p.m.
SUN., NOV. 23, 7 p.m.

General Public \$4.00

Students & Senior Citizens \$2.50

974-2323

department of Dance
College of Fine Arts

FREE USE STUDENT TICKETS AVAILABLE

2 FOR \$1.49
with 2 fries \$2.43

We are featuring thru Sunday our
**100% Pure Beef Single Burger at an
"EXTRA VALUE" Price!**

WITH THIS COUPON

2 Regular Single Burgers . . \$1.49
with 2 fries . . \$2.43

Lettuce, tomato and cheese
available for additional charge

Expires Nov. 16

Fletcher Ave. Dairy Queen

**Dairy
Queen**

2222 E. Fletcher
Open Daily till 11 pm
Drive-thru

© U.S. Pat. Off., Am. D.Q. Corp. Copyright, 1980, Am. D.Q. Corp., Mpls., MN Printed in U.S.A.



THE A, B, C's, OF A GARDEN CENTER

(This is just a LITTLE of what we have)

A.—Annuals

B.—Beauty Bark

C.—Cacti, Clay pots

D.—Dish-gardens

E.—Exotic plants

F.—Fertilizers

G.—Gift items

H.—Hanging baskets

I.—Indoor plants

J.—Junipers

K.—Kits

L.—Landscaping (low prices)

M.—Magnolias & mums

N.—Nandinas

O.—Orange trees

P.—Pansies

Q.—Quick service

R.—Roses

S.—Seeds & soil

T.—Thanksgiving plants

U.—Uvularia (lily)

V.—Vitex, & violets

W.—Wisteria

X.—Xylobium

Y.—Yucca

Z.—Zebras



BOUTIQUE PLANT ADOPTION

Hours:
9-5:30 Tues.-Sat.

12702 N. 56th Street
Between Fletcher & Fowler

988-3923

Open also:
1-4:00 Sunday
Closed Monday



On the air with WUSF's busy Connie McDonnell

By DANA LEVIN
Oracle Entertainment Writer

Every few minutes, Connie McDonnell groaned and gnashed her teeth. "Papers, papers, papers!" she screamed, as she sat before a microphone, about to go on the air.

"This morning was crazy," said her assistant, Stu Septoff, a USF broadcast major. "People were calling over the phone, voices on every line, people crawling under wires."

Suddenly McDonnell looked the picture of calm. The tapes started spinning, music blared and tension dropped away. This was WUSF-FM (89.7), the classical and jazz palace of USF, from the inside.

McDonnell, WUSF community service director, has the strong, silky, mature voice of a woman who has spoken much in her life, as was evident as she announced the music to be played the next half-hour. Then she relaxed and removed her headphones.

As Wagner's "The Magic Fire Music" went out over the air, McDonnell explained that she usually plays light music. "You know — waltzes. But it's Halloween, so I chose Wagner. This is the kind of spooky music that scares you."

Barry Hughes, WUSF operations manager had only praise for McDonnell. "We found out what would happen when she was gone," he said, explaining how vital McDonnell is to the running of the station. "It was chaotic. The assistants were swamped with work because no one knew how to do the things she did."

The things McDonnell does for WUSF exceed her 40-hours-a-week pay, she said. She plays music on a classical program called "Counterpoint" (Thursday from 10 to 11 a.m.), conducts interviews, makes public service announcements and generally

coordinates the station.

"I'm a PI too," she said. "That's Public Information. Like telling people who the cashier is. I am not the cashier." (McDonnell's desk is near a thoroughfare on the bottom floor of the Student Services building.)

Hughes joked about her temperament. "For someone of Irish descent, she's extremely level-tempered."

McDonnell agreed. "Everything is calm and peaceful, always," she said with tongue in cheek, doing three things at once: searching in her files with one hand, tidying the desk with the other and listening to someone on the phone.

McDonnell has a long history in the field of communications. At age 16 she got a job as a copy girl and then as a reporter on the Chicago Tribune. "I loved that; it was the most fun job I ever had," she said.

"I'm a fifth generation Chicagoan — boy, am I proud of that," she added. "That's back to Indians."

McDonnell moved to Florida when she was 18 and became women's news editor of the St. Petersburg Independent at age 22.

But McDonnell said she didn't like an 8 a.m. deadline, so she went to work for Radio WTCX-FM as a news writer. After a week there, she was asked to go on the air as an announcer. Since then, she has been an announcer on WDAE and WQXM.

Before coming to WUSF in 1976, she acted at The Showboat Dinner Theater and The Country Dinner Playhouse in St. Petersburg, doing freelance writing on the side.

See CONNIE, page 7



 Tank Tops Ladies Cap Sleeve In 10 Colors Trim (Ringer)

JERSEYS

 13.95 up

LUNDEEN SPORTING GOODS

 5114 East Fowler 985-2964

Connie McDonnell, WUSF-FM's community service director, hosts "Counterpoint," a classical music program, Thursdays at 10 a.m.

Oracle photo by Costas Angelakis



The College of Medicine and
The College of Social and Behavioral Sciences present:

Public Lecture

"Type A Behavior in the Cause & Prevention of Hypertension"

Ray Rosenman, M.D.

Harold Brunn Institute
Mt. Zion Hospital and Medical Center

Thursday, November 13, 1980

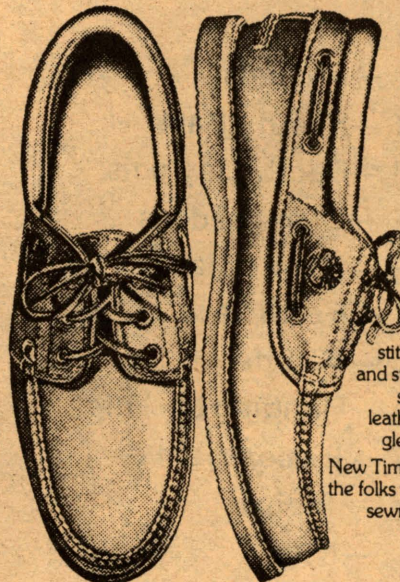
4:00 p.m. - Medical Center Auditorium

Human Services Lecture Series
Program for Emphasis in Human Services

TANNERY

Fine footwear & leather goods

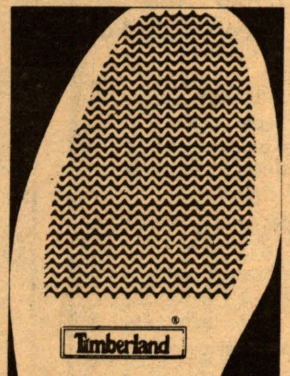
It took a lot of sole searching to come up with this boat shoe.



We did a lot of soul searching before we decided to make boat shoes. We were already up to our ankles, you might say, making the best boots and hand sewn shoes on land. But after we decided, that's when the real sole searching began.

We tried a lot of soles that missed the boat before we came up with a specially designed Vibram® sole. One that holds fast and really lasts. And after we'd gone overboard making such a fine sole, we made the whole rest of our shoe just as good.

We took fine waterproof leathers that stay soft and supple even after you dunk 'em in salt water. We added nylon stitching to resist rot, mildew and stress. Eyelets that were all solid brass. And a padded leather collar that really snug-gles up around your ankles. New Timberland boat shoes. Now the folks who make the best hand-sewns on earth make the best handsewns on water.



The Shoe

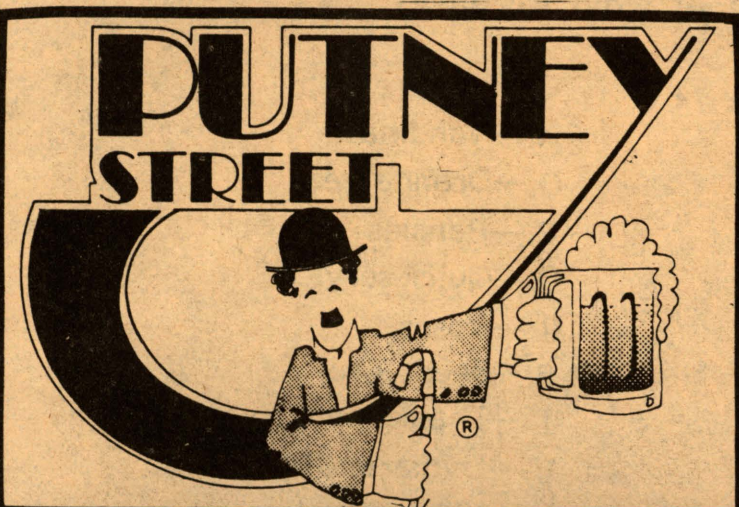
Timberland

The Sole

A whole line of fine leather boots and shoes that cost plenty, and should.

Tampa Bay Center • Lower Level 2576 E. Fowler Avenue • Fowler Plaza
Next to Tampa Stadium Next to University Mall
877-4331 977-3333

BE SWEET TO YOUR FEET AT THE TANNERY



NOW APPEARING
BRANDYWINE

Monday — Funday

½ Price Drinks 8 p.m. til Closing

HAPPY HOUR — Mon — Fri 4-7 p.m.

Open 11 am to 1 am 11 am to 2 am
Mon-Thurs Fri-Sat

TAMPA BAY CENTER

'SNL' starts new season Saturday

NEW YORK (AP) — The repertory cast of NBC's remodeled "Saturday Night Live" was introduced earlier this month, and the late-night series' new producer, Jean Doumanian, promised a show "at least as good as the old one."

The six actors and actresses chosen by Ms. Doumanian after a talent hunt that began in June succeed the series' now-famous Not Ready for Prime Time Players, most of whom have gone on to other acting assignments.

"Saturday Night Live" begins its sixth season at 11:30 p.m.

Saturday on Channel 8. The Guest host will be Elliot Gould, with musical guest Kid Creole and the Coconuts, who recently played Tampa's Agora Ballroom with the B-52's. Ms. Doumanian, formerly an associate producer to the series' creator and producer through last season, Lorne Michaels, said she intends to retain the best of the old show, add certain new elements "and broaden the scope of the comedy."

She said she has added 15 new writers for the upcoming season. "They're young, ambitious —

some have never written for television before — and their ideas are fresh," she said of the creative team.

Ms. Doumanian said the new players are:

— Denny Dillon, who has appeared on Broadway and was a regular on NBC's "Hot Hero Sandwich" and played Doreen in

the movie "Saturday Night Fever."

— Ann Risley, who has appeared in repertory theater as well as several movies, including "Annie Hall," "Manhattan," "Stardust Memories" and "Oliver's Story."

— Charles Rocket, a former front man for a number of bands,



Pat Benatar plays Bayfront Sunday

America's newest rock 'n' roll queen Pat Benatar returns to the bay area Sunday night when she performs at the Bayfront Center in St. Petersburg at 8.

Benatar sold out Tampa Theatre last year, thanks to the popularity of her debut LP, "In the Heat of the Night," which included gritty rockers like "Heartbreaker," "I Need a Lover" and "We Live for Love."

The 27-year-old soprano has just released her second LP, "Crimes of Passion."

Currently one of the hottest records in the country, the album contains the hits "Treat Me Right," "Hit Me With Your Best Shot" and her child abuse protest "Hell is for Children."

Tickets are \$5.98 limited advance and \$6.98 for general admission (plus a service charge) and are available at Sun Bums, Alias and Q record stores and the box office.

Connie

Continued from page 6

Suprisingly, McDonnell is unnerved by machines; although she is continually surrounded by them in the claustrophobic studio. "It's amazing she's done so well on the air," Hughes said. "She hates machines — lives in fear of them attacking her."

"The diabolical perversity of inanimate objects — I've been attacked by typewriters," McDonnell said. "Once my thumb got stuck in one of those old-fashioned adding machines, and they had to call the fire department to get me out. Inanimate objects are always falling on my head."

McDonnell said she loves to be outside, but the career she has chosen keeps her removed from nature. "I get up and go out for walks deliberately."

McDonnell said she is loyal to WUSF; her job as community service director stretches into the realm of public relations.

THIS KINGSIZE WATERBED
comes complete with frame, headboard, pedestal, mattress & liner. Contemporary style. Available in all sizes.

LIFETIME GUARANTEE

\$188⁰⁰
REG. \$229.

AMERICAN WATERBED WAREHOUSE
1607 N. 22nd St., Tampa, FL 33605
PHONE (813) 247-2606 after 6:00 p.m. 985-6977

Serving: Tampa - St. Pete Clearwater - USF Temple Terrace

"The Floridian" Recommended By The Sandman

A ROLLING FANTASY

USF SPECIALS

Friday - Skate Midnight to 3am
Only \$2⁰⁰ Skates Free

Saturday - Unlimited Bowling 11:30 to 2am
5 to a lane Only \$3⁰⁰ BEER 25c each

Sunday - Adult Skating 9 to 11:30pm
Only \$2⁰⁰ Skates Free

5311 Busch 988-1127

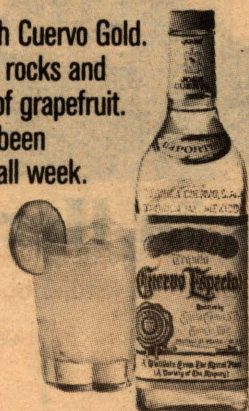
TERRACE SKATE & TEMPLE LANES



No, Mr. Babcock. Yes, Mr. Burns. Never, Ms. Little. Never.
Five days of this and I bust loose with Cuervo & grapefruit.



Bust loose with Cuervo Gold.
Dash it on the rocks and
add a splash of grapefruit.
Your mouth's been
waiting for it all week.



Cuervo Especial® Tequila. 80 Proof. Imported and Bottled by © 1980 Heublein Inc., Hartford, Conn.

Abortions \$160

FREE

Pregnancy Tests

Birth Control Clinic

TAMPA COUNSELING AND ABORTION CENTER

14704 N. Florida Ave.
961-7907

Steve McQueen:

a quiet, simple man who made good

By TED HOFFMAN
Asst. Entertainment Editor

Steve McQueen the actor was a smoldering tough guy who survived gun battles, knife fights, explosions, fires, blobs from outer space and anything the elements could throw at him.

Steve McQueen the man was a quiet near-recluse who fell prey last Friday at the age of 50 to the effects of lung cancer, but with the same strength and dignity that marked his screen persona.

McQueen leaves behind a legacy of professionalism and fine performances in his 25 films, including an Oscar-nominated portrayal of a maligned sailor in 1966's "The Sand Pebbles."

Throughout films such as "The Great Escape," "Bullitt," "The Towering Inferno," and "Papillon," McQueen demonstrated a deft, sensitive style that garnered him a great critical and public following.

Most recently, the rugged superstar had played the title roles in "Tom Horn" and "The Hunter," both of which received good reviews, especially for McQueen, and excellent box office business.

McQueen's initial success in the entertainment industry came with a western TV series, "Wanted; Dead or Alive" in the late 50's.

With the surprising popularity of "The Blob," a B-horror film that is now a classic, McQueen embarked on one of the most sustainably lucrative Hollywood careers of all time, quickly graduating to big-budget fare like "The Magnificent Seven."

Although he was, in general, highly regarded by his peers and by critics, McQueen never was quite able to escape the same stigma that has haunted other macho stars such as Clint Eastwood. Steve McQueen was rarely taken seriously as a truly talented actor. He was put in that tier just below the "real" talents — the men who made "serious, meaningful" films.

It is too bad, for McQueen was a tremendously talented and dedicated performer who never let his private life onto the set. Other than an ill-fated marriage to Ali McGraw based largely on physical aspects, McQueen kept separate the actor and the man, a fact which secured him a good reputation with his fellow craftsmen.

Because he led so secretive a life outside the studios, there is little to say of this man who loved race cars and motorcycles and

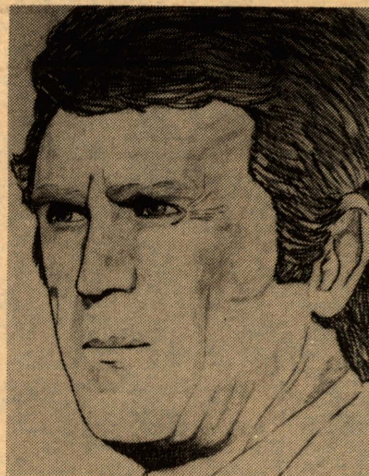
eschewed the archetypal Hollywood scene.

It was earlier this month that McQueen checked into a Mexican hospital for treatment of an usually fatal lung cancer.

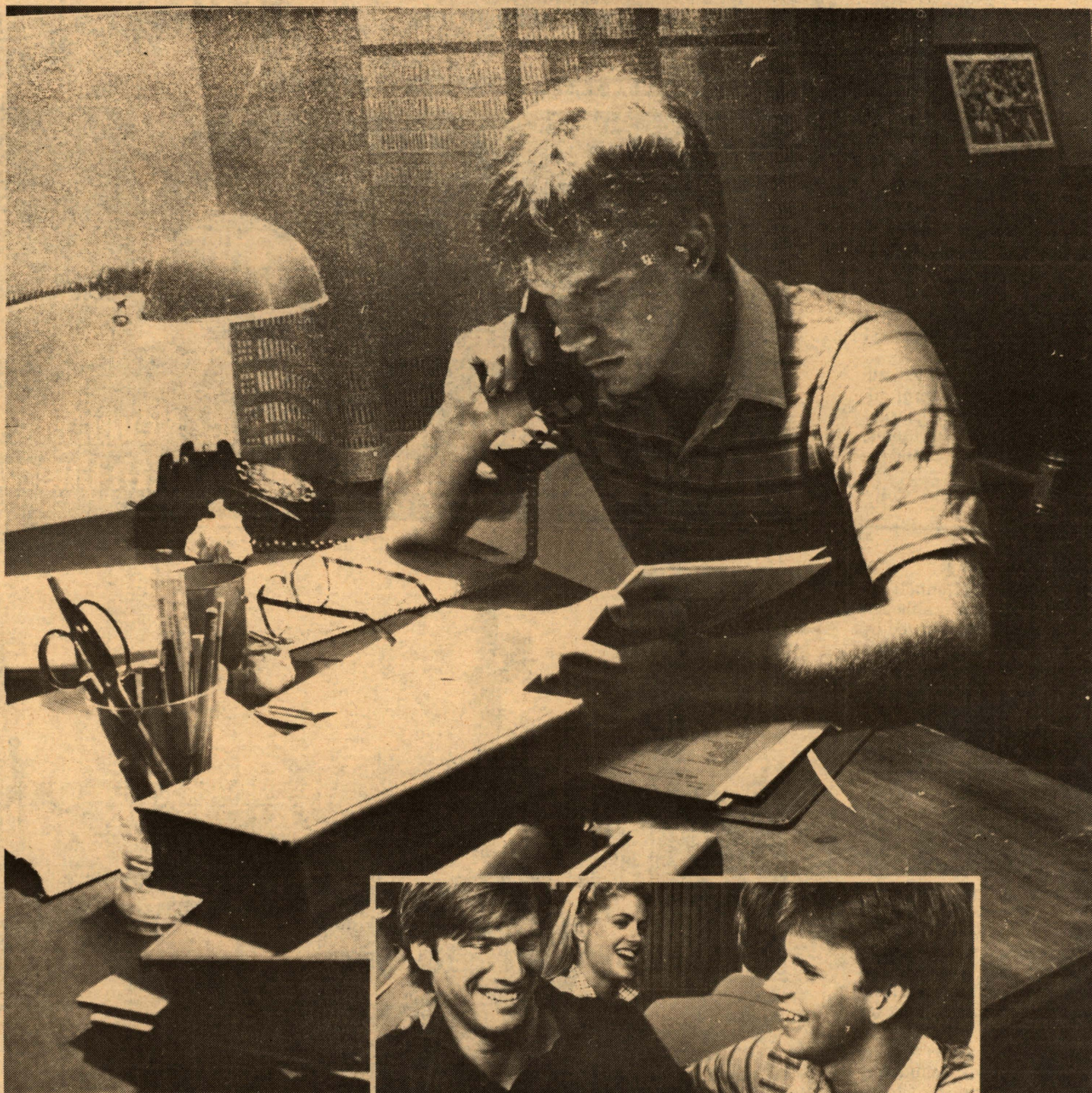
McQueen gave gallant but fruitless battle, undergoing a variety of treatments, including the controversial drug interferon. After an operation to remove a tumor from his abdomen,

McQueen seemed in stable health. Without warning, his struggling heart simply gave out.

It is a tragic end for a gifted professional who dodged bullets and blasts throughout his career but could not avert the whim of a callous Nature, who similarly cut down John Wayne and Humphrey Bogart. What was said about the courageous Hubert Humphrey is a fitting tribute for McQueen, whose dear love for life kept him optimistic and strong to the end: "He showed us how to live, and he showed us how to die."



When you need some notes at 3:00 a.m., you find out who your friends are.



You left the notes for chapter 6 in the library. A sure sign that tomorrow's test will be heavy with questions from chapter 6. Someone you know is about to get a phone call. He's not going to like it, but he's going to come through. When this is over, do something special for him. Tonight, let it be Löwenbräu.

Löwenbräu. Here's to good friends.

1980 Beer brewed in U.S.A. by Miller Brewing Company, Milwaukee, Wisconsin.

CINEMA 69

319 N. DALE MABRY

XXX FILMS

2 Super

Hits !

CALL 879-0592

Open Daily: 10AM

(Midnight Show) Everynight

Sun: 2PM-12 Midnight

Housing

Continued from page 1
appropriated.

King said many of the older schools like the University of Florida, Florida State University and Florida A & M University have residences that will cost more to renovate than it did to build them back in the 1950's.

The housing crunch and devising ways to end it are old problems at USF.

The Board of Regents and the Legislature have approved little money for dormitory construction during the last few years, devoting money instead to improve academic standards.

For several years, USF has applied to the U.S. Department of Housing and Urban Development for housing money. In 1979, USF ranked 10th in need among 49 universities of the same size for \$27 million in housing loans, but only eight schools were given

loans.

In 1978, USF ranked 29th among 200 universities of the same size, but only 25 loans were given.

The rankings reflect HUD's opinion of the severity of the housing shortage at each university.

Only 10 percent of the federal loans this year will be given to universities the size of USF,

forcing USF administrators to call the University's chances "a long shot."

USF has been trying to obtain funds to buy privately owned Fontana Hall for several years. The 13-story student residence hall on Fletcher Avenue has been for sale for one year and loss of the 808 beds should the building

be sold to another buyer or converted to condominiums will be a severe blow to the already critical housing shortage at USF.

ORACLE !
974-2620

Correction

Wednesday's Oracle incorrectly identified John Sawhill, candidate for chancellor of the Board of Regents, as acting secretary for the U.S. Department of Energy. Sawhill is acting chairman of the Energy Department's U.S. Synthetic

Fuels Corp.

In addition, although a board spokesman said Sawhill will be interviewed in Tampa today by the Chancellor search committee, Sawhill's office said he will not be in the area.

Prepare For:



MCAT
LSAT • GRE
GRE PSYCH
GRE BIO
DAT • VAT
GMAT
PCAT
OCAT
MAT
SAT
CPA

TOEFL
MSKP
NMB
I, II, III
ECFMG
FLEX
VQE
NDB
NPB I
NLE

TEST PREPARATION
SPECIALISTS SINCE 1938

Stanley H. KAPLAN
Educational Center

There IS a difference!!!

By Special Request:
GRE CLASS
starting
Nov. 13th 6 p.m.
10921 N. 56th Street
Temple Terrace, Florida
Sherwood Forest Shopping Center

We reserve the right to cancel any class for which there is insufficient enrollment
Call for details
Days, Evenings, or Weekends

988-0003

Centers in More Than 80 Major US Cities
Puerto Rico, Toronto, Canada & Lugano, Switzerland

the GOLDEN KEG

stop and watch the bucs

"FREE PIZZA!"

WED — LADIES NIGHT 2 for 1
THURS — MENS NIGHT 2 for 1
SAT — SINK OR SWIM
Happy hour 5 p.m.-7 p.m.
Budweiser on Draft 35¢

Closed Monday 988-9885

40th & Busch across from Busch Gardens

2nd draft
FREE
with
coupon



● Dart Boards
● Pool tables
● Pinball machines

OPEN
10am-1am

BEER BUST


All you can drink \$2⁰⁰

Empty Keg

8-12 Friday 11-14.

All proceeds go to

THE UNITED WAY



The Department of Psychology and
The College of Social and Behavioral Sciences present:

Public Lecture

"Flexible Working Hours"

Professor Simcha Ronen

Professor Simcha Ronen
Visiting Professor of Management and Organizational Behavior
New York University's Graduate School of Business

Friday, November 14, 1980
CBA 104 : 2:00-4:00

Human Services Lecture Series
Program for Emphasis in Human Services

4944 E. BUSCH BLVD.
988-0120
Open 9 to 9
Sun 11 to 5

DENIM CENTER

FREE ALTERATIONS WHILE U WAIT

BUSCH PLAZA
1/2 Mile East of Busch Gardens
(next to Proud Lion Pub)

<h3>All Shirts & Tops</h3> <h2>BUY ONE</h2> <p>and</p> <h2>GET ONE</h2> <p>for 1¢</p>	<h3>LEVI'S</h3> <h2>\$12.99</h2> <p>cord denim</p> <p>Prewashed \$16.49 m</p>	<p>Sassoon ... \$25.99</p> <p>Select Group!</p> <p>Levi Movin on.... \$9.99</p> <p>Faded Glory.... \$9.99</p> <p>Lady Levi.... \$14.99</p>
--	---	--

\$1.⁰⁰ OFF With This Coupon With a Minumum Purchase of \$15.⁰⁰

SCRATCH

By
Treadwell

Forum

Continued from page 1
money) will go to faculty and disciplines that contribute in important ways to the realization or accomplishment of objects the University has set forth in the University's Role and Scope plan and other plans and documents," Brown said.

College deans are to receive computer printout worksheets Friday, according to Vice President for Academic Affairs Greg O'Brien.

The printouts will show each faculty member's salary and the level to which it should be brought in compliance with legislative mandate.

The Legislature requires the appropriated money be spent to bring faculty salaries up to 85 percent of the national average salary for college faculty.

Deans will use the worksheets to make recommendations as to the level of each faculty member's pay raise.

Brown also announced at Wednesday's forum that the Sun Dome should be open for USF's Nov. 29 basketball game against Florida A & M University.

"That's 17 days from now. I've been in there (the Sun Dome) fairly recently, and there's a lot of work left to do," Brown said. "I've been talking to the experts, and they say we've got a good shot at it, though."

"We'll be in there on time barring some unforeseen problem. We won't have the Sun Dome finished, but we're going to rough it," Brown said.

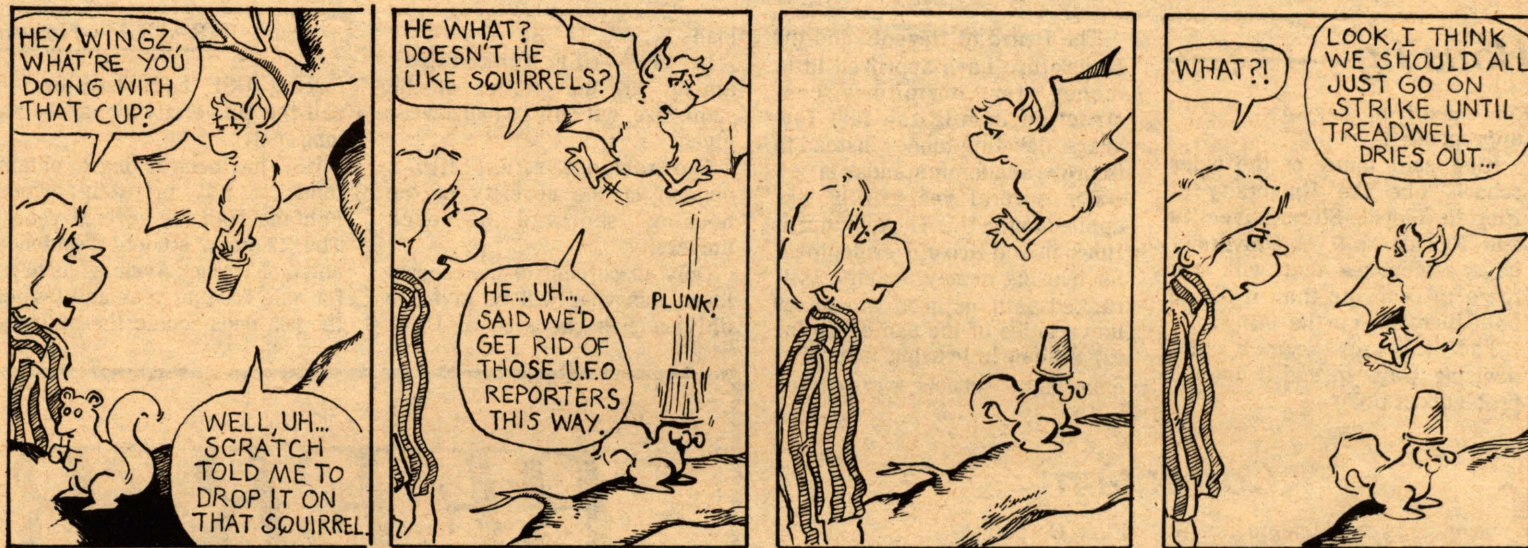
Vice President for Student Affairs Dan Walbolt estimated some 6,500 seats would be available for the FAMU game, but Brown said some might not be as comfortable as others.

Hypertension topic of lecture

Emphasis in Human Services will sponsor a lecture by Ray Rosenman today at 4 p.m. in the Medical Center auditorium. He will speak on "Type A Behavior in the Cause and Prevention of Hypertension."

Rosenman will discuss how a type A behavior pattern is related to coronary heart disease and how environmental factors play the dominant causal role in this modern epidemic. The lecture is free and open to the public.

Invite
customers
to your store
with an
Oracle ad



985-7417

Low
Monthly Payments
for
P.I.P. • Liability • Collision

JOHN WATTS AGENCY
AUTO INSURANCE

Fowler
10940 N. 56th St.
Terrace Village Shopping Center
56th Street

JHOON RHEE
INSTITUTE OF **KARATE**

GIFT CERTIFICATES AVAILABLE

This season gain physical fitness, self-defense and confidence

SEE AND COMPARE

11007 NORTH 56TH STREET — 988-3892
SHERWOOD FOREST SHOPPING CENTER
Karate Lessons for Men, Women and Children



"9 to 5 I sell stocks.
Weekends, I bust loose with my buddies & Cuervo."



BUST LOOSE!
CUERVO & ROCKS



CUERVO ESPECIAL • TEQUILA, 80 PROOF, IMPORTED AND BOTTLED BY © 1981 HEUBLEIN, INC., HARTFORD, CONN.

Transportation and Leisure



CREDITS

Coordinated By

Sandy Pratt

Cover Designed By

Bob Whitman

Sales Represntatives

Eric Tucker, Scott Wood, Lisa Tietjen, Bill Moore, Kevin Olson,
Nancy Protfield, Ruth Orloff

Production Coordinated By

Rebecca Ware/Joe McKenzie

Production

Crystal, Ditra, Burl, Stephan, Cathy, Kathy, Brenda, Seth,
Pam, Dave, Kim, Maggie, Tim, Kacy, Dana, Irene, Diane,
Kandi, Cherie, Adrienne, Chris, Amy, Liz, Leslie

**INSTANT
PASSPORT & I.D.**

**Pictures You NEED TODAY
Available Today at Ro-Mo**

Pick up an extra roll for your trip

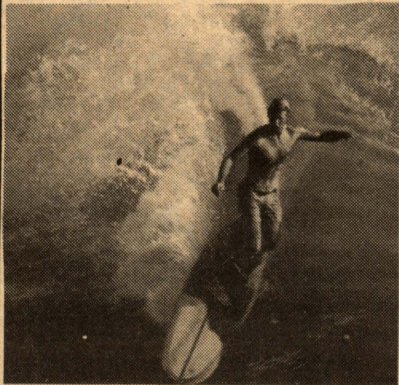


CAMERA SHOP

5116½ E. Fowler Ave.
Tampa, FL 33612
Phone: 985-2114

Quality Photo Finishing

TRAVEL IDEAS FROM LEISURE TRAVEL



HAWAII BONANZA

9 days/7 nights

From \$729. Dbl. occupancy

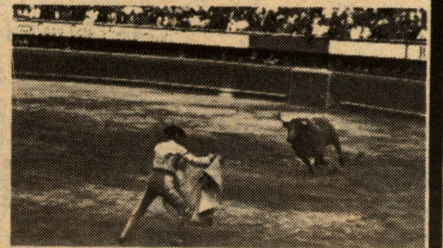
- Roundtrip airfare from Tampa
- 7 nights at Waikiki Surf
- Sightseeing
- Portorage
- Many extras

MEXICO CITY

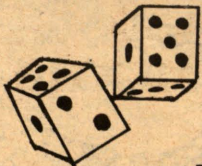
7 days/6 nights

From \$249 Dbl occupancy

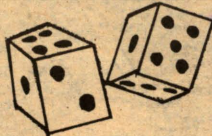
- Roundtrip airfare from Tampa



- Braniff Airlines
- Roundtrip Transfers
- Full day Mexico City and University City

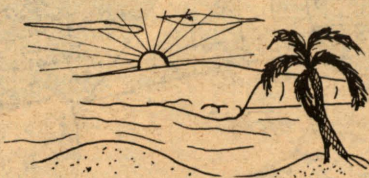


LAS VEGAS



From \$349 per person Dbl occupancy

- Roundtrip from Tampa
- Braniff Airlines
- Accomdations for 3 nights
- Hacienda Inn of Royal American
- Roundtrip Transfers
- Flamingo Hilton Lounge Show with drinks



FT LAUDERDALE

4 days/3 nights

From \$78.50 per person Dbl Occupancy

- Land only (no Flying)
- Accomodations For 3 nights at Jolly Roger Hotel
- Sightseeing
- Super Saver Membership Card

CANCUN, MEXICO

4 days/3 nights

From \$224 per person

- Roundtrip Airfare from Tampa
- Eastern Airlines
- Roundtrip Transfers
- Fiesta Maya Yatch Cruise
- Super Saver Bonus Book

LEISURE TRAVEL

10946 N. 56th Street

Temple Terrace, FL

985-7423

MONTREAL, CANADA

4 days/3 nights

From \$268 per person Dbl occupancy

- Roundtrip Airfare from Tampa
- Air Canada
- 3 nights in Sheraton Mt. Royal
- Roundtrip Transfers
- Sightseeing

Effective March 23

First Aid Supplies for Your Car

Many of the little problems that can disable a car along the roadway can be taken care of by the driver—if he has some simple tool or some little thing like a piece of tape or wire. You don't have to be a good mechanic to fix many of the little things that can go wrong. Your car's fan belt may become loose because the bolt holding the generator/alternator in position became loose—this would be reflected in the warning light on your dash indicating that the alternator/generator is not charging. A wire may become disconnected, a tailpipe hanger may break, etc. The following is a list of some of the things you can carry in your trunk or glove compartment that you may find useful from time to time:

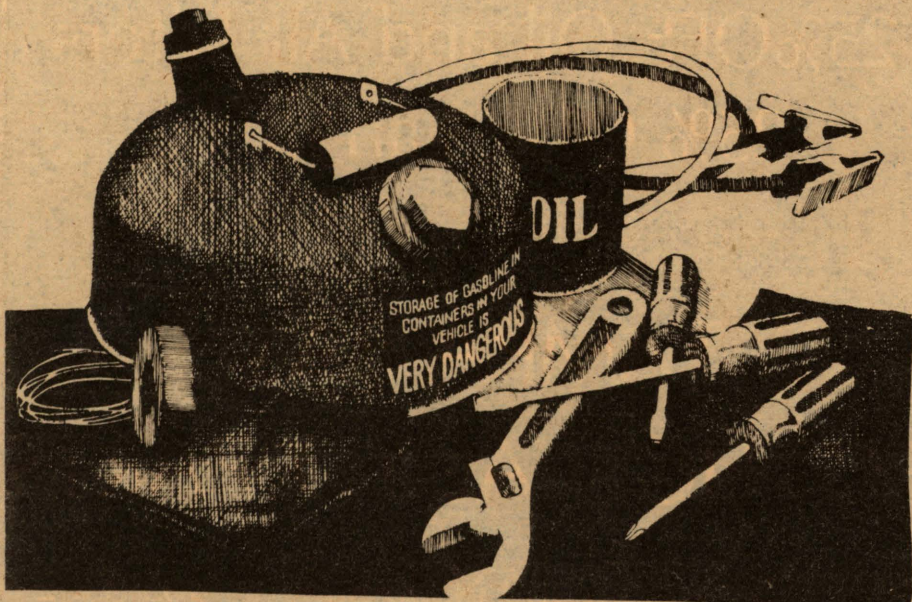
Necessary Items:

Glove Compartment:

- The name, address, and phone number of someone to call in an emergency.
- Spare fuses for the electrical system.
- A good flashlight.
- An ice scraper for winter driving.
- A pocket knife.

Trunk:

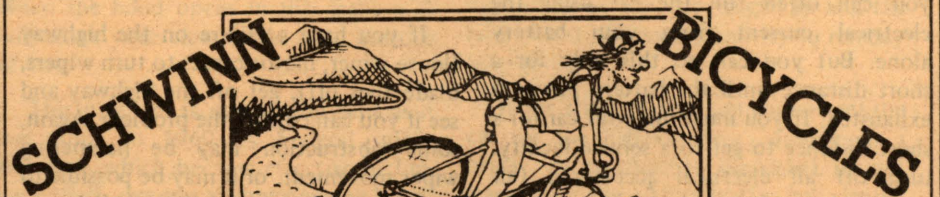
- Spare tire (with air in it).
- Fire extinguisher.
- First aid kit.
- Jack and lug wrench for changing tires.
- Flares or reflective day/night devices.



See the 81 Fujis

Introducing two new lines

Winsor and Lotus



Come see the NEW Chicago made 28-30 lb. lite weight bicycles. Also Peugeot and Fuji bicycles. Sales and Service.

TAMPA SCHWINN CYCLERY

8447 N. Florida Ave
1/2 mile south of Busch on Florida 935-5123

RENT-A-DENT OF TAMPA, INC.



DAY — WEEK — MONTH — LEASE
WE OFFER REALLY LOW RATES
DEPENDABLE USED CARS
STATION WAGONS — SMALL TRUCKS
WE PICK-UP & DELIVER



Minimum age 21



971-4031

1511 E. FOWLER AVE. (BEHIND SOUND ADVICE)

SAVE 15%

ON YOUR AUTO REPAIRS ... What You Need Is On Sale Today!

You see lots of brake specials, tune-up specials, oil change specials etc. But maybe you need fan belts, a water pump or a major engine repair which no one ever puts on sale.

Now pick the items you need & save 15% with this ad.



Benny's
N.I.A.S.E. CERTIFIED MECHANIC
AUTO REPAIR

933-8405

OPEN
Mon.-Fri. 8-5
Sat. 8-1
11 Years
In Tampa

13123 1/2 N. Florida Ave.
S. of Fletcher Behind Brown's Steel



FREE ESTIMATES
ALL WORK GUARANTEED

MARK YOUR CALENDAR!

42nd St. Station

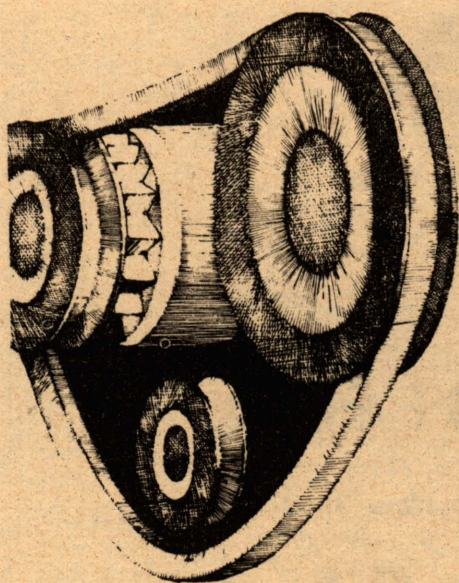
"MAKE TRACKS TO THE STATION"

Come In And Party Before Break DEPARTURES NIGHTLY



Closed Mondays
4202 E. Busch Blvd
985-7014

TUES.	WED.	THURS.	FRI.	SAT.	SUN.
College Appreciation Night	2 FOR 1	Funkin Fifties Twist Contest	PARTY HARDY	Sink or Swim	SUNDAY FUN EXPRESS
ALL YOU CAN DRINK for \$2.00 (w-valid college ID)		Free Keg to any college organization with biggest turn-out. Case of beer given to twist contest winner!		The first 100 people here before 9 p.m. ONLY \$3.00 per person ALL YOU CAN DRINK	LAST CALL!



Windshield Wiper Failure

Windshield wipers may fail when you need them most—when it's raining or snowing. To lower the odds of your wipers failing, periodically check them or have a service facility do it for you. Make sure you have good blades and that they are properly adjusted to conform to your windshield.

If you have the disappearing-type wipers, periodically check the opening to the front of your windshield. Do this more frequently in the fall and winter. Remove leaves, twigs, snow or ice from the wiper recesses and from around the wiper motor shaft and wiper arms. Such obstructions can place a strain on your wiper motor and result in wiper failure.

If you have a failure on the highway (loose wiper, motor ceases to turn wipers, blade flies off), get off the highway and see if you can correct the problem. Again, some obstruction may be hampering wiper movement, or it may be possible to push the wiper arm on the spindle more firmly. Before you pull off the road, make certain it is safe to do so.

Open the window and stick your head out to see, if necessary.

If you find that you can't fix the wipers yourself, wait until the rain or snowstorm has let up, then proceed with caution to the nearest service facility. If it's impractical to wait, you'll have to get help.

your car may also be about to overheat. Have a service facility correct the problem as soon as you can.

If this happens out on the highway, you can often run the car using the electrical current from your battery alone. But you can do this only for a short distance until the battery power is exhausted. If you must run your car for a short distance to get to a service facility, turn off all electrical accessories (air conditioner, radio, or heater) except the ignition.

If this happens at night, the extra drain on the battery will shorten the distance you can drive, but you should be able to drive several miles to a service facility.

PLAY IT SAFE!!!

TUNE UP BEFORE YOU GO

20% OFF PARTS

(Points, Condenser, Caps, and Rotor)

Spark plugs for 99c

(excluding rotary and resistor)

25% OFF Oil and Air Filters

25% OFF Fan Belts

(WITH THIS COUPON)

TAMPA BAY

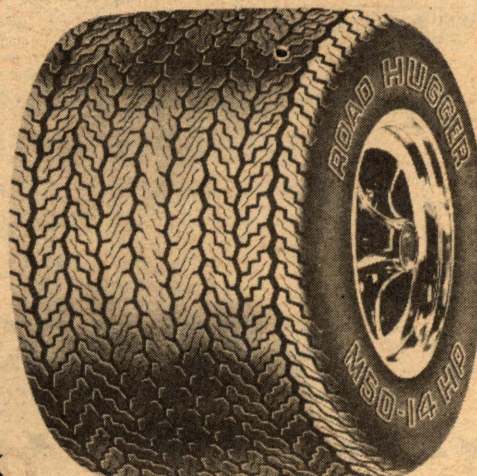
FOREIGN AUTO PARTS

988-1277
12909 N. 56 St.
985-3362

Southern Tire Co.

Grand Opening Sale At Our New Location in North Tampa

*Over 19 Years of
Dependability At*
3218 S. Macdill Ave
839-7370 839-6261



If you don't see your size call & ask
Ask About our Discount Club

We have Brake Service and Front End Dept.

Tubeless White Poly

A78x13	\$25.95
B78x13	27.95
C78x14	28.95
E78x14	30.95
F78x14	31.95
G78x14	32.95
H78x14	35.95
G78x15	34.95
H78x15	36.95
L78x15	38.95

PLUS TAX

CONSOLIDATED STUDENTS ASSOCIATION STUDENT SAVINGS CARD

Unified Buying Power

Card must be presented before ordering mdse/
services. Not valid on special sale mdse, services.

HOURS:
Mon.-Fri. 7:30-6:00
Saturday 7:30-2:00



Raised letters

A70x13	40.11
D70x14	42.25
E70x14	43.98
F70x14	45.34
G70x14	47.05
G70x15	48.16
H70x15	49.88

PLUS TAX

971-2656

971-2655

1210 E. Fletcher Ave.

Dropped Driveshaft

One of the most dangerous problems to occur on the highway is a *dropped driveshaft*. This problem doesn't occur often, but when it does, it happens suddenly.

In vehicles with front-mounted engines, the driveshaft is the long tubular device underneath your car. It is connected on one end to the transmission and on the other to the differential in the rear end. Its purpose is to transfer power from the transmission to the rear end to turn the rear wheels and propel the car. The driveshaft connections at the front and back are called universal joints. If one of these fails, on some vehicles the driveshaft may drop to the roadway.

Failure of the rear universal joint is not as serious, from a safety standpoint, as failure of the one in front. If the universal joint in the rear fails, the rear end of the driveshaft may drop to the roadway. Motive power will be lost, and the car cannot be driven until the driveshaft is repaired.

If the front universal joint fails, a serious accident can result, and the faster the car is moving the greater the danger. In this case, the front of the driveshaft may drop and can dig into the pavement. The forward motion of the car can then lift up the rear end of the car and flip the car over. Your **FIRST AND MOST IMPORTANT PRECAUTION** is to slow down before pulling off the road to prevent the drive train from digging into the rough berm.

To reduce the chance of this happening to your car, have your service facility *examine and lubricate your car's universal joints periodically* and check for possible

looseness in the joint assemblies or in the bearings. Universal joints will be obviously noisy before they fail completely. Generally, this is accompanied by a severe vibration throughout the vehicle at all speeds.

Further, if you ever hear a dragging noise under your car, slow down and pull off the road, and look for the problem. It may be your muffler or tailpipe dragging, and you may be able to temporarily raise them and use a piece of wire to hold them in place. But if it's the driveshaft, the car won't move and you'll have to get assistance.

Hood Popup

Failure of a hood latch (both primary and secondary) or improper closure of hood and subsequent failure of the secondary latch, can result in the hood popping open while you are driving. When the hood opens in this fashion, it will block your view of the road in front of you.

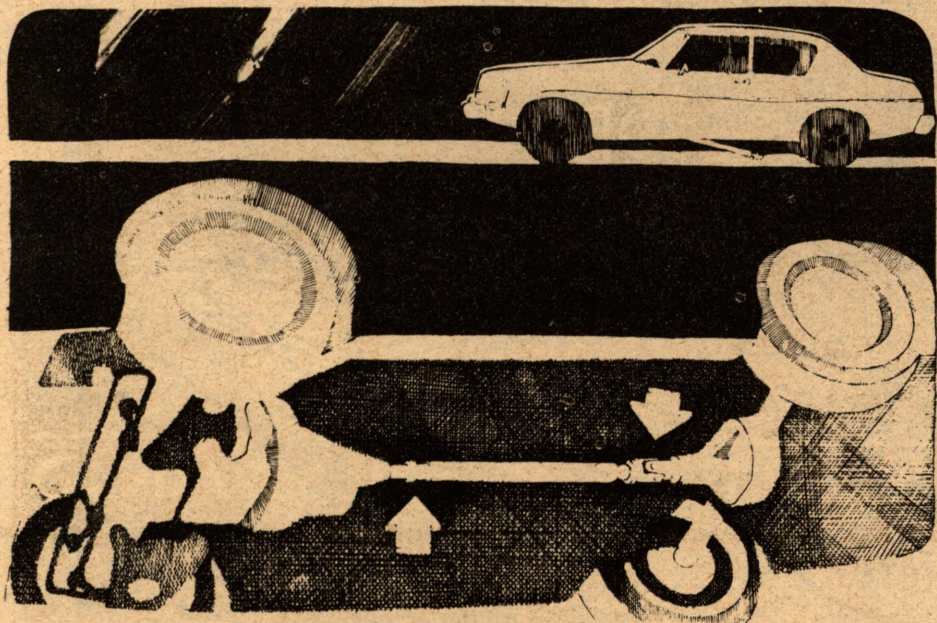
This problem is not as prevalent as it was prior to 1969. A Federal safety standard, which became effective in January 1969, requires a front-opening hood, which in any open position partially or completely obstructs a driver's forward view through the windshield, to be provided with a second latch position on the

hood latch system or with a second hood latch system. Despite this, hood latch failure can occur and you should know what to do if your hood suddenly pops open while driving.

The first thing to remember is **DON'T PANIC AND DON'T PANIC-STOP**. If you apply your brakes suddenly and hard, you may be inviting a rear end collision. Instead, ease the car to the right or left (depending on the lane of traffic you're in and the room you have on either side) and depend on your limited view from left window for forward steering reference (i.e., you may have to stick your head out the window to look). Also, glance in your rear view mirror to see how much room you have between you and the vehicle behind you. Remove your foot from the accelerator and apply your brakes slowly. Turn on your emergency flashers and give a **HAND SIGNAL** to indicate that you are going to **STOP**. After you've signaled drivers to the rear, pull off the road (to the left or the right depending on the type highway and the lane you're driving in) and try to remedy your problem.

If for some reason you cannot get the car off the highway (e.g., driving on a bridge, or guardrail to the right), do not leave your car. After traffic has cleared behind you, proceed with caution to the nearest point at which you can exit the highway.

CAUTION: A frequent cause of this problem is the failure of a service station attendant to close the hood properly after checking the oil, radiator or battery. You should get accustomed to the sound made by your hood when it is closed firmly. Thereafter, if you fail to hear the customary "THUNK" when an attendant closes your hood, check the hood yourself before proceeding.



Saldanos
Fresh Seafood

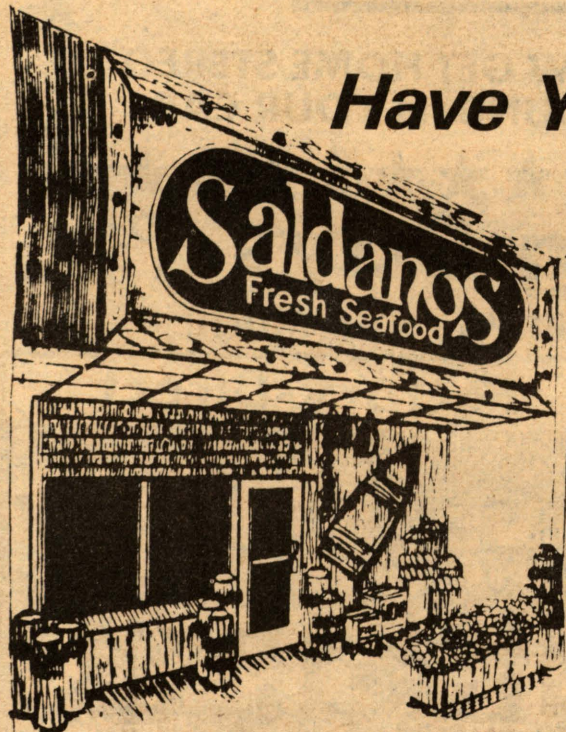
RESTAURANT AND MARKET

Busch Plaza Shopping Center

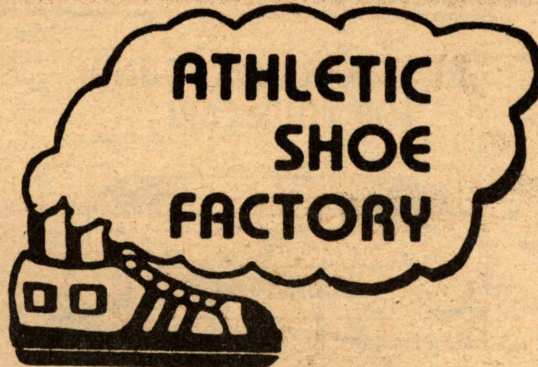
4924 E. Busch Blvd.

985-8731

*Have Yourself A
Leisurely
Lunch*



**FINEST SELECTION
OF SEAFOOD
IN THE BAY AREA**



•NIKE •BROOKS
•ADIDAS •SPECIALS



**ADIDAS SQUIRE
RUNNING SHOES**

were 26⁰⁰

now

19⁹⁵



Bata Tennis Shoes

were 26⁰⁰

now

11⁹⁵

Shorts

2⁹⁹

While supply lasts!!

30th St. (Across from Schlitz)

Monday thru Friday 10-7

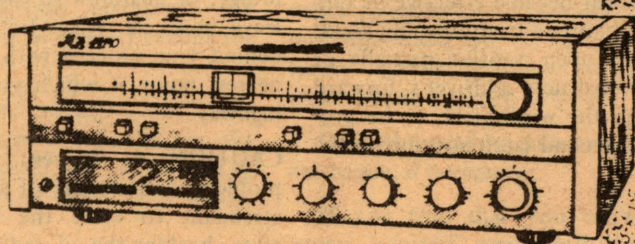
971-0421 Saturday 10-6

IN
STEREO

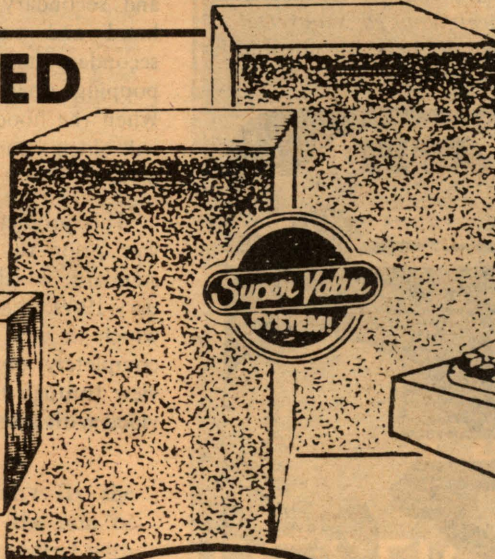
Find It All At Mr. Freight...

Name Brands in Hi-Fi for home & on the go...

**SUPERB ENGINEERED
SYSTEM
— UNDER \$300!**



AKAI # AA-R30
FM-AM Stereo Receiver
40 watts RMS
Low distortion
sensitive tune
level meters



\$289⁰⁰
complete

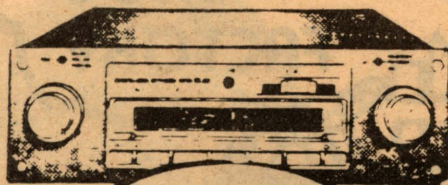
LEONARDO QUALITY
Speaker series
50 watt peak
coaxial speakers



AKAI
"platter pleaser"
Manual Belt-Drive Turntable
Complete with Base-dust cover
& Cartridge.

**GREAT MARANTZ SOUND
FOR YOUR CAR!**

Gold front!



All
Dressed
up in
GOLD

\$159⁹⁹

INSTALLED

MARANTZ CAR-300
In-Dash AM/FM Stereo
Cassette Player.

5 Station Pre-Set Pushbuttons, Locking
Fast Forward & Rewind, plus Auto Eject,
LOC/DX, FM Muting and more!

**IN DASH
Car Stereo
By Craig**

Complete
System

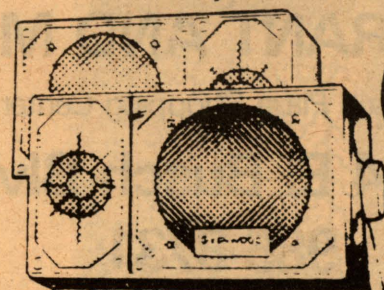


**AM-FM Stereo
Cassette
with 2 Panasonic
Speakers**

\$99⁹¹ Custom
Installed

**40 WATT
COMPONENT STEREO
SPEAKER SYSTEM**

completely enclosed
For Vans/Motor Homes/Auto/Boats
Nationally Adv. \$125.00!



\$49⁹⁵ PAIR

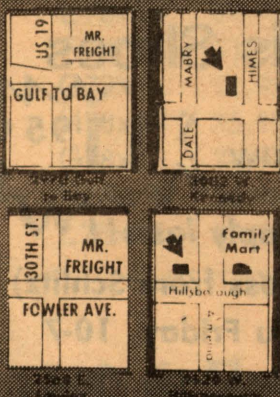
**NOW GET HOME STEREO
SOUND IN YOUR CAR**

These are just a few of our
every day low prices



4 Big Days Open
7 days

If You Don't Buy A Stereo From Us, You Probably Will Pay Too Much!



We'll install your car unit
for \$19.99 even if you
didn't buy it from us.

some artwork
shown not exact
as product.

TAMPA

4 AREA LOCATION

2568 E. FOWLER
3602 W. KENNEDY
2529 W. HILLSBOROUGH

CLEARWATER
2970 GULF-TO-BAY

Factory-Direct

879-3968

THE NEW MR. FREIGHT STEREO

*1 holds any item for XMAS.

Easy Financing

MON.-SAT: 9-6
SUN: 12-5

Loss of Lights

A total loss of lights in conjunction with total power loss is usually caused by the burnout of a fuse, a fused wire, or by loosened battery cables. (A flashlight in the glove compartment is essential to fix most electrical problems at night, so periodically check your flashlight to make sure it is functioning properly.) If your lights go out, pull off the road and take care of the problem before proceeding. Know where the fuse panel is in your car—check your Owner's Manual. Also carry spare fuses of the type used in your car's electrical system. Find your fuse panel and identify the fuse for your lights. (The panel should be marked to identify the fuse for the various systems.) Replace the blown fuse with a good one. If the new fuse doesn't solve the problem, or if the new fuse blows, your problem is more serious and requires repair by a competent automotive electrical systems repairman.

If you don't have a spare fuse, NEVER wrap a piece of tinfoil around the old fuse. This defeats the prime purpose of the fuse and may result in an electrical system fire.

Loss of just one light (e.g., a taillight or one of the headlights) is less serious than a total loss of lights. This is probably the result of a bulb burnout, and you'll still have enough visibility to carefully drive to the nearest service facility to have the problem corrected.

If only the headlamps go out, the problem may be in a circuit breaker which has opened. These are heat-actuated to open and close, so they may come on and go off intermittently, giving you some light to help you to safety.

Overheated Engines

Engine overheating can be caused by a number of things—a leak in the radiator or hoses permitting loss of coolant, a faulty water pump, a bad thermostat, or a broken fan belt. There may be nothing seriously wrong. Some engines have a tendency to get hot when being overworked on hot days, e.g., moving slowly on a very hot day in a long line of stop-and-go traffic (particularly air-conditioned vehicles).

Become familiar with the normal position of the needle on your temperature gauge when your car has reached normal operating temperatures. Knowing this, if you notice the needle moving abnormally close to the "HOT" position it's time to do something. For cars equipped only with a light that indicates when the engine is hot, when this light comes on it's also time to do something.

If you notice steam or liquid being emitted from the front of your car, this is a definite indication that it is overheating.

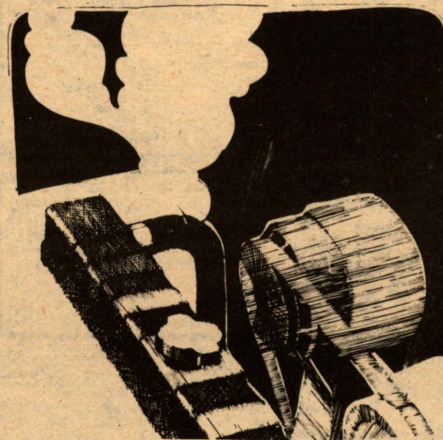
If your car has a tendency to heat up when moving slowly in dense traffic in hot weather, there are several things you can do:

- If possible, pull off the road, turn off the engine, and let it cool off before proceeding.
- If you can't pull off the road and if the engine has not reached the critical overheat point (as noted by needle movement on the gauge), turn off your air conditioner (if you have it on). In stop-and-go,

slow-moving traffic, shift into NEUTRAL while stopped. Both these actions reduce the strain (load) on the engine and may bring the temperature down. During long waits in traffic, a slight increase in the engine's idling speed (press the accelerator lightly) can also help reduce overheating through the action of the fan on the coolant in the radiator.

- If none of the above work, turn on your heater (in addition to the other actions mentioned) and roll the windows down. This helps to reduce the engine's temperature, even in cars not equipped with air conditioners, by increasing the radiator capacity.

If the TEMPERATURE RISE is NOT NORMAL for your car, pull off the road. Look for the source of trouble and let the engine cool. DON'T REMOVE THE RADIATOR CAP. If the radiator cap is removed before the engine has cooled, the STEAM OR LIQUID EMISSIONS, WHICH WILL BE FORCIBLY RELEASED, CAN CAUSE SEVERE BURNS.



Remedial Action for Overheated Engines:

- Remember—never pour cold water into an overheated engine or you may crack the engine block. This mistake is often made.
- After the engine has cooled, remove the radiator cap and check the coolant level. If your car is equipped with a "surge tank," check the coolant level at that point. The surge or radiator "overflow" tanks contain markings that indicate when coolant is low, normal, or hot; they are designed to take the overflow liquid from the radiator when the radiator gets hot, rather than have the coolant lost. When the radiator cools, the overflow should return to the radiator.
- Look for leaks or breaks in the radiator, surge tank, or in the hoses, including heater as well as radiator hoses.
- Correct the problem if possible. Friction tape or adhesive tape can sometimes be used to TEMPORARILY stop or slow a leak in a hose until you can get to a service facility to have it replaced. If the hose is split or ruptured near the end, sometimes you can remove the hose end (using a screwdriver or pair of pliers, depending on the type clamp used), cut off the damaged section (using a knife), and replace the hose.

NOTE: This often works for the smaller diameter hoses (3/4 or 1 inch that are flexible and a little longer than they have to be.

24 Hours/7 Days Airline Tickets At Airline Prices

Free ticket delivery
Se Hable Espanol

We cater to USF students and faculty
Experts in travel to Middle East, Europe,
South America

253-2651

From Tampa To:

Freeport, Bahamas

\$160.50

Air Fare & Hotel
3 Days, 2 Nights

Las Vegas

\$299.00

Air Fare & Hotel
3 Days, 2 Nights

New York **\$206.00** Round
Super Saver Trip

Plan now for Thanksgiving and Christmas
breaks... So we may get the best prices for you.

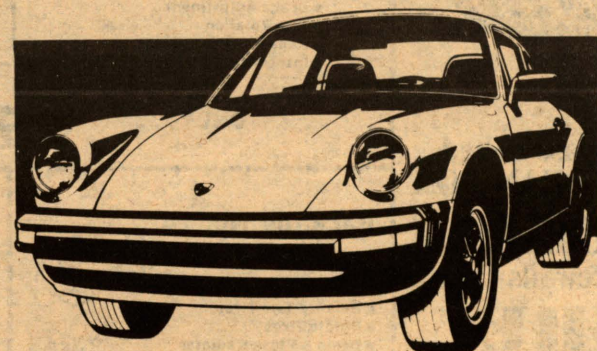


Bay Travel
519 N. Howard Ave.



ALO AUTO PARTS, INC.

Expert Machine Shop Service



Also Quality Parts for
Domestic and Foreign Cars

Announcing the arrival of our newest shop
equipment providing you with the best service—
The DCM Tech Flywheel Grinder and
Sunnen HS Valve Guide Reconditioner

ALO Auto Parts, Inc.
13910 Florida Ave.
Tampa 961-6428 961-6428

penalties for drunk-driving:

First Conviction - not less than \$25 nor more than \$500 fine or up to 6 months in jail or both and a mandatory 3 months to 1 year revocation of your driving privilege.

Second Conviction - (within 3 years) mandatory imprisonment for not less than 10 days nor more than 6 months and a fine of not more than \$500. If second conviction occurs within 5 years a mandatory 6 months to 2 years revocation of your driving privilege.

Third Conviction - (within 5 years) mandatory imprisonment for not less than 30 days nor more than one year and a fine of not more than \$500. If third conviction within 10 years a mandatory 1 to 5 years revocation

Loss of Steering

Loss of steering can occur suddenly and without warning. Something in the steering mechanism or its related components may break, fall off, or jam, leaving the driver with no control of the car's direction. (Partial loss in power-assist steering can occur if a drive belt breaks; steering control is not lost, but it requires additional effort.)

In such situations there is little you can do except to APPLY THE BRAKES to come to a STOP as quickly as possible. While applying the brakes, some WARNING to other motorists and pedestrians may be possible by turning on your EMERGENCY FLASHERS, using your HEADLIGHTS, BLOWING your HORN, and using HAND SIGNALS. (See previous note on EMERGENCY FLASHERS.)

When your car finally comes to a halt, try to move it off the roadway. Assistance from passing motorists or pedestrians may be sufficient to turn the wheels by hand enough to permit pushing the vehicle off the roadway. Before such action is attempted, position your emergency warning devices (flares or highway triangular warning signs) to alert other motorists using the road.

Leave the car in place until you get the steering repaired or until you get a wrecker to move the car to a repair facility. Lift the hood of the car and attach a white cloth to your radio antenna or door handle to indicate to other motorists or police that you need assistance.

NOTE: If you have had any previous warnings of steering problems, you should not find yourself in such a predicament. Steering problems are often preceded by such symptoms as extreme tightness in the steering, which indicates something is binding or obstructing the mechanism, or extreme looseness. If your car develops such symptoms, have the problem diagnosed and remedied at once.

Fires

Under the Hood or Under the Dash:

Fires are generally caused by a fault in the electrical system or by leakage in the fuel system, which may cause raw gas to leak onto a hot engine. When such a fire develops, pull off the roadway just as soon as it is safe to do so, turn off the ignition, and get out of the vehicle in a safe manner. (See Note)

Every vehicle should have a fire extinguisher for emergencies. If you don't have an extinguisher, fires in the engine compartment can sometimes be put out by throwing dirt on them. You can also try smothering the fire by using a heavy cloth. Be careful when raising the hood to get at such a fire—use a rag to cover your hand when releasing the hood latch so that you don't get burned. Also turn your head aside as the hood is released to prevent facial burns from flashing flames.

NOTE: Consider the severity of the fire and the risk involved before trying to put it out. If the fire is a major one or is a fuel-fed fire, stand clear of the vehicle and wait for the fire department.

Dud Thames Bike Shop

HOURS
8:30 - 5:30

A FULL LINE BICYCLE SERVICE
COMPLETE REPAIRS ON
ALL MODELS & MAKES

ONE OF THE LARGEST SELECTIONS
OF RALEIGH BICYCLES IN THE SOUTHEAST
LARGE SELECTION IN STOCK ALWAYS

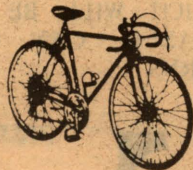
TAMPA'S 10 SPEED HEADQUARTERS

FEATURING
THE EXCLUSIVE
RALEIGH CUSTOMIZER
ASSURES YOU OF
A PERFECT FIT
TO MAKE RIDING
SAFE & COMFORTABLE

Tampa's Largest Bike Shop

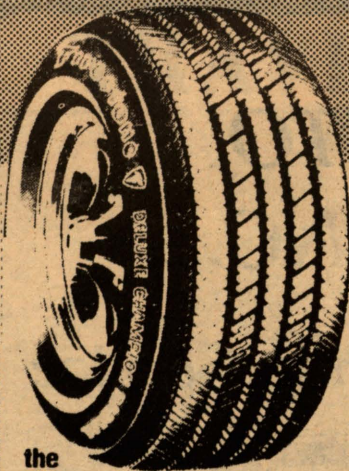
2409 S. MacDILL AVE.

839-0410



Firestone

Carefree Car Care



the
strong
silent
type

Fiberglass-belted
DELUXE CHAMPION

**RADIAL
Whitewalls
TIRE
SALE!**

This economy-priced radial features two strong fiberglass belts, tough polyester cord body and computer-designed, quiet-running tread. Fits most American and import cars.

as low as **\$38** P155 80R13 Whitewall

Package No. 1A

- Lube & Oil Change
- Oil Filter
- Brake Adjustment
- Tire Rotation
- Repack Outer Bearing
- Inspect Brake System

ONLY...

\$9⁹⁵

Most American Cars

Package No. 1B

- Front End Alignment
- Tire Rotation
- Brake Adjustment
- Balance Two Tires
- Repack Outer Bearings
- Inspect Brake System

Package No. 3

- Rotate Tires
- Balance Two Tires
- Drain & Flush Radiator
- Add 2 Gal. of Coolant
- Install New Wiper Blade Refills
- Check All Hoses
- Check All Belts (average life of belts & hoses is 30 months)
- Check & Test Battery
- Lube & Oil Change
- Oil Filter

Most American Cars

\$39⁹⁵

Package No. 4

- Rotate Tires
- Balance Two Tires
- Drain & Flush Radiator
- Add 2 Gal. of Coolant
- Install New Wiper Blade Refills
- Check All Hoses
- Check All Belts (average life of belts & hoses is 30 months)
- Check & Test Battery
- Lube & Oil Change
- Oil Filter
- PLUS:
- Front End Alignment
- Air Filter

Most American Cars

ONLY... **\$49⁹⁵**

Package No. 2A

- Balance Two Tires
- Rotate Tires
- Drain & Flush Radiator
- Install New Wiper Blades
- Check All Belts
- Check All Hoses (average life of belts and hoses is 30 months)
- Check & Test Battery
- Repack Outer Bearings
- Inspect Brake System

ONLY...

\$29⁹⁵

Package No. 2B

- Lube & Oil Change
- Oil Filter
- Brake Adjustment
- Tire Rotation
- Repack Outer Bearings
- Front End Alignment
- Balance Two Tires
- Check & Test Battery

Package No. 5

- Rotate Tires
- Balance Two Tires
- Drain & Flush Radiator
- Add 2 Gal. of Coolant
- Install New Wiper Blade Refills
- Check All Hoses
- Check All Belts (Average life of belts and hoses is 30 months)
- Lube & Oil Change
- Check & Test Battery
- Oil Filter
- Air Filter
- Front End Alignment
- PLUS:
- Supply & Install Upper & Lower Radiator Hoses

Most American Cars

ONLY... **\$69⁹⁵**

Package No. 6

- Rotate Tires
- Balance Two Tires
- Drain & Flush Radiator
- Add 2 Gal. of Coolant
- Install New Wiper Blade Refills
- Check All Hoses
- Check All Belts (Average life of belts & hoses is 20 months)
- Check & Test Battery
- Lube & Oil Change
- Oil Filter
- Air Filter
- Front End Alignment
- Install Upper & Lower Radiator Hoses
- PLUS:
- Enery Saving Tune-Up
- We'll install resistor plugs, ignition points, condensor, adjust carburetor, set point and dwell timing.

ONLY... **\$79⁹⁵**

Size	Also fits	White	F.E.T.
*P165 75R13	165R-13	8.16	\$1.48
*P175 80R13	BR78-13	5.0	1.87
P185 80R13	CR78-13	5.2	1.86
*P175 75R14	BR78-14	5.5	2.21
P185 75R14	CR78-14	5.6	2.03
P195 75R14	ER78-14	6.0	2.19
P205 75R14	FR78-14	6.2	2.25
P215 75R14	GR78-14	6.1	2.52
P205 75R15	FR78-15	6.3	2.51
P215 75R15	GR78-15	6.6	2.64
P225 75R15	HR78-15	6.8	2.77
P235 75R15	LR78-15	7.3	3.07

FOWLER AVE.
OPP. UNIVERSITY SQUARE MALL
1511 Fowler
PH. 971-1438
Certified Mechanic
Open Nightly
till 7 P.M.

Call for an appointment!

90 DAYS SAME AS CASH
on revolving charge at Firestone stores and many Firestone dealers

- Minimum monthly payment required.
- All finance charges refunded when paid as agreed

Firestone national credit card honored at more than 2,500 locations

We also honor:

- Visa • MasterCard • Diners Club
- Carte Blanche • American Express

**NO CHARGE
FREE MOUNTING**
Firestone tire purchase

First Rule of Crash Avoidance

The best way to avoid accidents caused by vehicular malfunctions is to keep your car in safe running condition. You should inspect your car periodically, performing the inspection and preventive maintenance services within your capability. These include checking the tires, checking the lights, and checking fluid levels (e.g., oil, radiator coolant, battery fluid). A squeal from under the hood when you race the engine, for example, may mean you have a loose fan belt. The wise owner will also check the location and condition of his fire extinguisher, auto jack, spare tire, warning devices or flares, and flashlight. He will also know the location of his fuse panel and will carry spare fuses. If you can't perform these services yourself, or don't want to, have your service station do it for you.

Periodic Checkups:

You should also take your car to a service establishment periodically, or when signs of trouble develop, for necessary maintenance services and for routine safety checks of such things as condition of fan belts and hoses, the exhaust system, brakes, steering assembly and related components, and wheel alignment. When problems are apparent (e.g., looseness in steering, vibration in wheels

or steering, spongy brakes, uneven tire wear, noisy muffler) or symptoms of problems exist (e.g., unusual noises or vibrations, car stalling for no apparent reason), prompt and proper repairs are necessary to assure safety of the vehicle.

As-you-start-Checkups:

The driver of a vehicle, whether he owns it or not, should also perform certain safety checks before he drives. Many of these are done unconsciously by simple observation or by becoming aware of a peculiar noise or vibration that wasn't there when the car was last driven. For example, a casual observation of the tires before getting in the car may point out such obvious problems as worn-out tires, a tire low on air, or a tire with a bubble in the sidewall. Inside the car, a casual glance at the gas gauge will tell the driver whether he should fill the tank so as to avoid running out of gas on the highway. An oil pressure light slow to go out may indicate a serious potential engine problem. Applying the brakes before engaging a driving gear will give an indication of whether the brakes are operating normally. A check of the lights, including those on the instrument panel, and a functional check of the windshield wipers are also good precautions. Finally, when the car begins to move, extreme looseness in the steering or a pulling to the right or left can be felt in the hands. Problems such as these require immediate attention.

Despite owner/driver observations and preventive and periodic maintenance services, problems can still develop while the car is being driven. Here is what you can do about them.

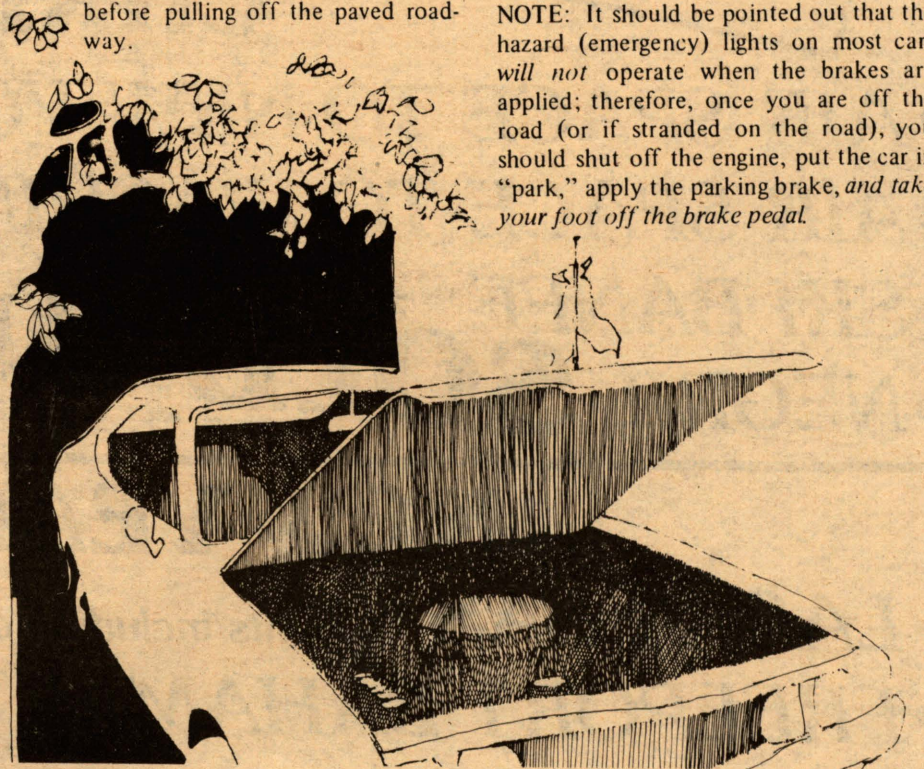
Stopping on the Highway

Many of the emergency situations that will be described require stopping on the highway. Stopping on a highway for any reason is dangerous. If you must stop on a highway, observe the following precautions:

- If the highway has paved shoulders, signal your intention to pull off the highway, pull off at near traffic speed, then slow down. If the shoulder is unpaved, signal a right turn and slow down to a safe speed before pulling off the paved roadway.

- In dusk, darkness, or bad weather, leave your low-beam headlights on, turn on your interior lights and your four-way flashers.
- If you have to stop in a risky location (e.g., over the crest of a hill or on a curve), get everyone out of the car and well away from traffic.
- Place a flare or other warning device just behind the car and another at least 300 feet farther back. Check for these before starting to drive.
- If you need help, raise the hood and tie a white cloth to the antenna or left door handle.

NOTE: It should be pointed out that the hazard (emergency) lights on most cars will not operate when the brakes are applied; therefore, once you are off the road (or if stranded on the road), you should shut off the engine, put the car in "park," apply the parking brake, and take your foot off the brake pedal.



"Sailboat Rentals"



15 percent Discount
on daily rates
10 percent discount
on hourly rates

THE DRY DOCK Inc.

7616 W. COLUMBUS DRIVE • TAMPA, FLORIDA • 33607 • (813) 886-0079
Prindle Sailboat & Board Sailing Dealer
RENTALS • SALES • LESSONS • ACCESSORIES



Your untuned engine may be wasting part of your gas money!



You don't have to have a gas guzzler to be wasting gas. Any inefficient engine can do it. A maladjusted economy car can waste more gas than a well-tuned guzzler.

So, whatever you're driving, the smart thing is to let us computer-analyze your engine's efficiency and performance on the **Siemens Engine Analyzer**. And then correct the problems that waste your gas.

- Analysis takes just minutes
- Complete electronic tests ... every engine function
- Computer-printed tape ... faults *automatically* shown in red
- We can give you a smooth-running car ... with new power and pep ... top performance, better gas economy
- American cars and light trucks ... popular foreign cars

Drive in today ... you'll save gas driving home!

Costs only
most cars

\$14⁹⁵

Siemens Engine Analyzer...
the best thing for your car next to your mechanic

COUNTRY CLUB AUTOMOTIVE CENTER

Complete Foreign & Domestic Service & Repair



11626 N. FLORIDA AVE.
935-4112 935-9701

- Radiator & Automatic Transmission Repairs
- Computer Engine Analyzing
- Ammco Brake Shop
- Auto Air Conditioning Service



Naise Certified Mechanics
24 HR. TOWING SERVICE

Fast Freddie's PAINT & BODY SHOP

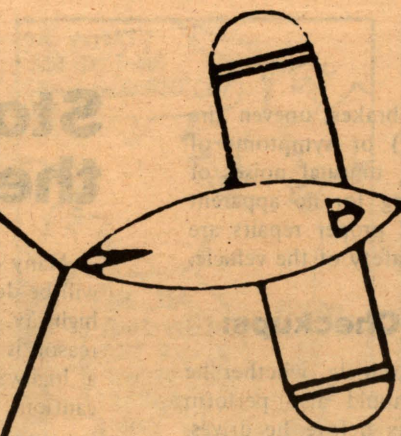
10% Student discount

**Bring this Ad and Student ID
for 10% discount**

1517 E. Fowler 977-0988

Lady Lynn's

Sport & Classic Car Interior



American Overseas Travel

CHRISTMAS BREAK

- AIR SPACE TO NEW YORK round trip **\$169.00**
- AIR SPACE TO WASHINGTON round trip **\$146.00**
- SKI BANFF 7 days including air fare from Tampa **\$659.00**
- NEGRIL **SOLD OUT** nights including air fare from Tampa **\$443.00**

NEW YEAR'S BREAK

- LAS VEGAS 3 nights including air fare from Tampa **\$359.00**
- FREEPORT BAHAMAS 2 nights including air fare from Tampa **\$145.00**
- DISNEY WORLD 3 nights including air fare from Tampa **\$91.00**
- JAMAICA 7 days including air from Miami **\$475.50**

SPRING BREAK

- CRUISE TO THE BAHAMAS 3 days from Miami **\$338.00**
- SKI BANFF 7 days including air fare from Tampa **\$649.00**
- LAKER TO LONDON round trip from Miami **\$374.00**
- SKI INNSBRUCK 7 nights including air fare from Tampa **\$925.00**

SUMMER BREAK

- BARBADOS 7 nights including air fare from Tampa **\$350.00**
- CYCLE THE ROCKIES 6 days **\$175.00**
- LAKER TO LONDON from Tampa, watch for special introductory offer
- EUROPE FOR CREDIT London & Edinburgh, Paris & Normandy, Rome & Urbino, Lisbon & Madrid, Madrid & Granada, Obiedo & Seville, Fly around Spain, Munich & Berlin, Moscow & Leningrad, Warsaw & Krakow.

Prices shown based per person double occupancy. Prices quoted are based on tariffs at time of this printing. All prices are subject to tariff and foreign currency conversion at the time of departure.

ADM 102 PHONE 974-2001

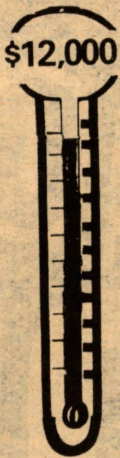
Telefund pledges

After seven nights of telephone calls to USF alumni, the alumni telefund volunteers have accumulated \$9,500 worth of pledges, according to Barbara Prusse, student chairwoman of the telefund.

The telefund runs through Nov. 20. Money pledged by alumni will go toward student scholarships and alumni affairs, according to Joe Tomaino, USF alumni affairs director.

\$12,000

\$9,500



WOMEN'S PERFORMANCE NIGHT

★ MUSIC ★ POETRY
★ COMEDY

Friday, November 14, 1980

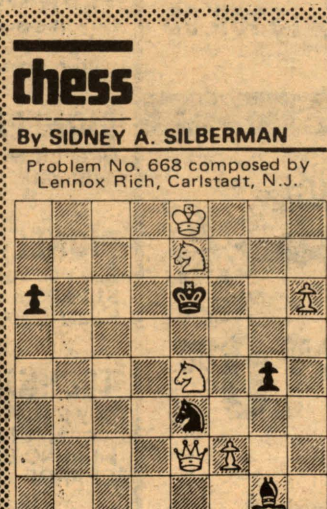
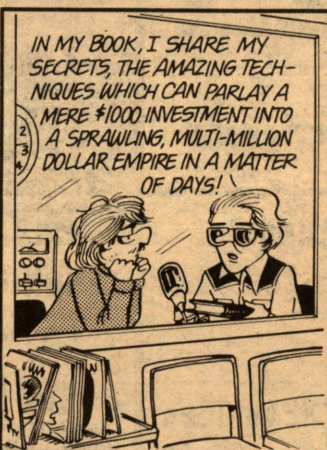
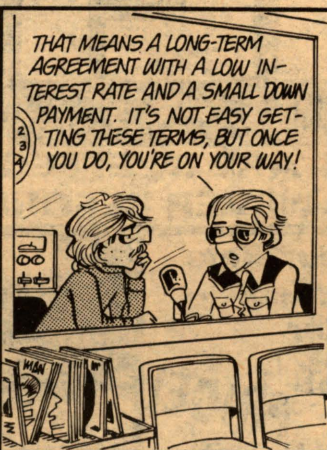
7:30 p.m. South Keg

U.S.F. Univ. Center

Sponsored by:
Everywoman's Center
ADMISSION FREE



DOONESBURY



WHITE TO PLAY AND WIN
SOLUTION TOMORROW

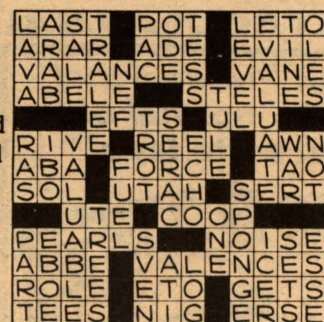
SOLUTION TO NO. 667
R-R5(ch)=K-K-5=R-K7 Mate

A Chess Book containing over 50 problems is available for \$1.35 post-paid from National News Service, Dept. O, P.O. Box 1737, Largo, Fla. 33540. Include your name, address, zip code and make checks payable to National News Service.

Crossword By Eugene Sheffer

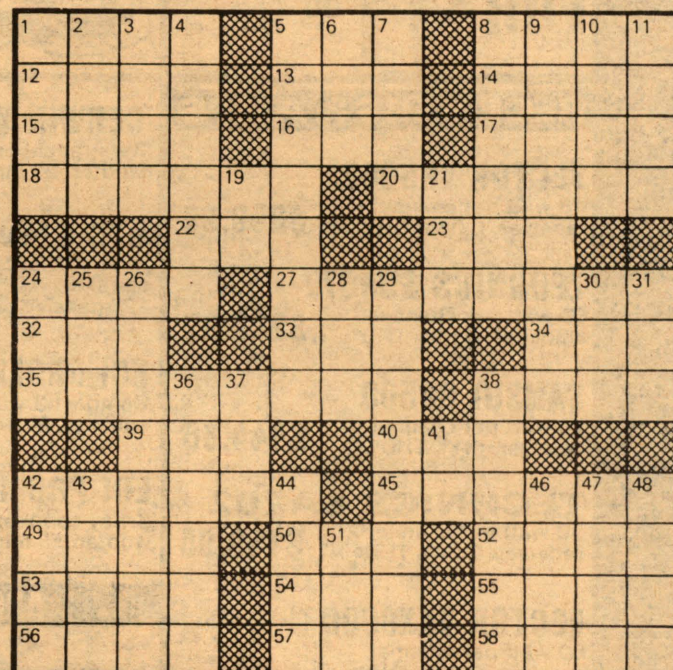
- ACROSS**
- 1 Illegal, in football
- 5 Seed container
- 8 At a distance
- 12 Verdi opus
- 13 Oahu neckwear
- 14 Like some excuses
- 15 Belgian river
- 16 — longa, vita brevis
- 17 Goals
- 18 Very hard
- 20 Vitamin A source
- 22 Prefix with classic
- 23 Chafe
- 24 Water vehicle
- 27 The scup
- 32 Time period
- 33 — to be tied (angry)
- 34 Caesar's 56
- 35 Shetland knitting center
- 38 Ran away
- 39 Milne character
- DOWN**
- 40 Grande, for one
- 42 Circle in Washington, DC
- 45 Reply
- 49 Woes
- 50 Table scrap
- 52 Scarlett's home
- 53 Summer pest
- 54 West
- 55 Dutch cheese
- 56 "Simon —"
- 57 Complete
- 58 Soaks, as flax
- 1 Coral islands
- 2 Word with shopping
- 3 — fixe
- 4 Mom, for one
- 5 Final contests
- 6 Poet's word
- 7 Record
- 8 Sudden call
- 9 Ump's call
- 10 Bullets, and such
- 11 Pause
- 19 French article
- 21 RR abbreviation
- 24 Arbitrator, for short
- 25 Macaw
- 26 Justice
- 28 Feel poorly
- 29 Repeated
- 30 Common contraction
- 31 Accomplished
- 36 Perches
- 37 Charged particle
- 38 Nurture
- 41 Door sign
- 42 Lodgings
- 43 Forearm bone
- 44 Library volume
- 46 Get one's feet wet
- 47 Part of q.e.d.
- 48 Los Angeles team
- 51 Sought office

Avg. solution time: 23 min.



11-13

Answer to yesterday's puzzle.



CRYPTOQUIP

11-13

WJMTWYS WSYLTCKWT LIEJM CIEKJ

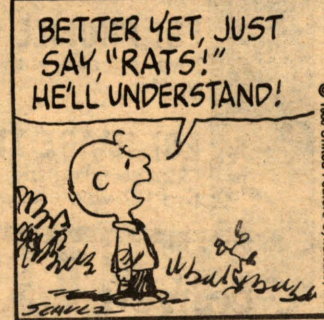
Yesterday's Cryptoquip — ACTOR RUES COMIC, SEMIDETACHED MUSTACHE.

Today's Cryptoquip clue: K equals I

The Cryptoquip is a simple substitution cipher in which each letter used stands for another. If you think that X equals O, it will equal O throughout the puzzle. Single letters, short words, and words using an apostrophe can give you clues to locating vowels. Solution is accomplished by trial and error.

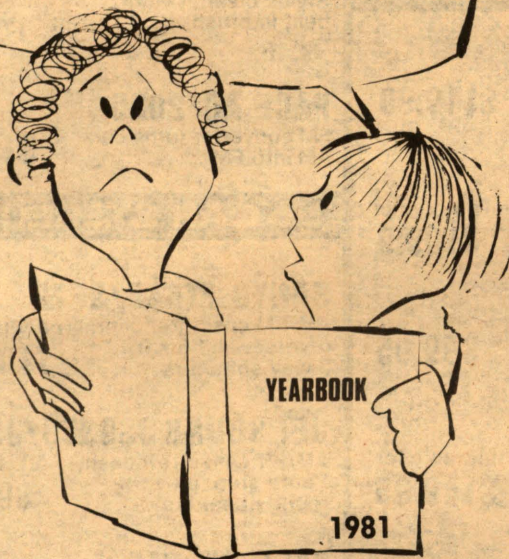
© 1980 King Features Syndicate, Inc.

PEANUTS®



© 1980 United Feature Syndicate, Inc.

"MOMMY, WHERE'S YOUR PICTURE?"



DON'T DISAPPOINT POSTERITY

SENIORS

The 20th Century Yearbook Photographer

is on Campus

now
free sittings

UNIVERSITY CENTER 223

or CALL 974-2115

BUY YOUR MEMORY YEARBOOK AT TIME OF SITTING \$10.00 (INCLUDES DIRECT MAILING COST)

DISCOUNT centers

~~\$16,000,000.00~~

WAREHOUSE

WAREHOUSE DIRECT PRICES ARE IN EFFECT AT EVERY STORE DURING THIS SPECTACULAR SALE! SAVE AS NEVER BEFORE RIGHT NOW! THIS IS THE BIG ONE!!

**BASF Professional
90-min. normal bias
cassette tape****BASF**
7
FOR \$11⁵⁵
PRO I C-90**SANYO 3-hour Beta
format video
recorder****WAREHOUSE
PRICE!**

VTC-9100A**RECEIVERS & AMPS****VECTOR VR5000**
45 watt per channel
receiver, 0.08% THD* **\$299.95****TECHNICS SU8077**
60 watt per channel
amplifier, 0.02% THD* **\$247.87****SANSUI G3500**
26 watt per channel
receiver, 0.1% THD* **\$144.66****TECHNICS SA202**
30 watt per channel
receiver, 0.04% THD* **\$159.95****VECTOR VRX9000**
80 watt per channel
receiver, 0.08% THD*,
pushbutton tuning **\$633.32****SANSUI G4500**
40 watt per channel
receiver, 0.1% THD* **\$189.95****TECHNICS SU8044**
38 watt per channel
amplifier, 0.02% THD* **\$188.88****TECHNICS SUC03:**
Micro Series 40 watt per
chan. amp, 0.03% THD* ... **\$268.88****SANSUI RECEIVERS**
ALL CLOSEOUTS! Some
demos, some unboxed,
scratch & dents **\$40% OFF****SPEAKERS****ECI LEGEND IX**
3 way bass ported, 12"
woofer **\$219.95ea****ECI PROFILE 600**
3 way speaker with 12"
woofer **\$149.95ea****ECI IMAGE XII**
Floor standing speaker,
two 12" woofers **\$349.95ea****CERWIN VEGA CH504**
3 way speaker with 15"
woofer, 6" midrange. **\$289.99ea****RTR G200**
High efficiency
speaker, 10" woofer,
12" passive radiator .. **\$248.88ea****ECI PROFILE 400**
Compact 3 way
speaker, 8" woofer. **\$69.95ea****ECI PROFILE 620**
3 way speaker, 12"
woofer, 5" midrange. **\$198.18ea****APPLIANCES****SANYO SR4802X**
Compact refrigerator
with door storage **\$149.95****SANYO EM2200**
2 power microwave,
1 cu. ft., 450 watts. **\$309.95****TAPES****8 FOR**
CUSTOM
90
90-min. normal bias
cassette tape **\$10⁸⁰****5 FOR**
TDK
SA C-90
Buy 5 & get a
FREE CASE!
90-min. high bias
cassette tape **\$15⁹⁵****TAPE DECKS****TECHNICS RSM44**
Cassette deck with 2
color FL meters **\$199.95****SANYO RD5008**
Cassette deck with
Dolby** NR **\$129.95****TEAC X-3**
3 motor, 3 head open
reel tape deck **\$449.95****VECTOR VCX600**
3-head metal tape
cassette deck **\$499.95****TURNTABLES****TECHNICS SLB3**
Automatic belt drive,
electronic speed change... **\$119.99****TECHNICS SLQ2**
Buy this quartz locked semi automatic
turntable for just \$109
with purchase of cartridge... **\$109.9****PIONEER PL200**
Direct drive semi
automatic turntable **\$99.95****PIONEER PL300**
Buy this semi auto quartz turntable for
\$149.95 & get record care
kit at NO EXTRA CHARGE... **\$149.95****TECHNICS SLD2**
Buy this semi auto direct drive
turntable for \$169 and get record care
kit at NO EXTRA
CHARGE **\$169.95****TECHNICS SL1200 MK II**
Direct drive quartz
turntable **\$276.66****AS LITTLE AS \$5
DOWN HOLDS ANY
ITEM IN LAYAWAY
TILL CHRISTMAS!****MISCELLANEOUS****AUDIO TECHNICA ATH-1**
Dynamic lightweight
stereo headphones **\$19.16**
Warehouse Price**PIONEER RH60**
8 track recorder with
twin VU meters **\$88.88**
Warehouse Price**ALLSOP 3**
Cassette head cleaner
prevents jams **\$3.95****AUDIO TECHNICA AT607**
Stylus cleaner with
built in brush **\$2.96****PAGE ACF2025**
FM converter turns car
AM into FM **\$19.95****CAR STEREO****SANYO FT645/SP72**
AM/FM cassette, digital readout, auto
reverse, and 6 x 9
3-way speakers **\$199.95****JET SOUND JS9350/JS560**
AM/FM cassette indash, short chassis,
auto stop; plus 5 1/4"
round speakers **\$99.95****PAGE SK4010**
4 x 10 coaxial speaker,
10 ounce magnet. **\$18.18ea****JENSEN J1077**
Coaxial 5 1/4" car
speaker, 20 oz. magnet... **\$24.44ea****CRAIG T640/V502 and
JENSEN J1065**
AM/FM cassette auto reverse, with 50
watt power booster, and Jensen 3-way
6 x 9 speakers with
20 ounce magnet, 3-
inch midrange driver **\$299.95**

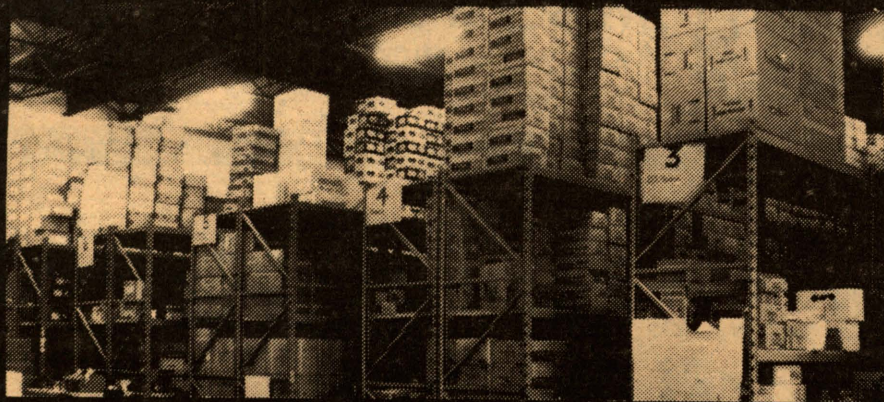
CUSTOM hi-fi DISCOUNT centers

CUSTOM hi-fi

FRIDAY & SATURDAY: 10AM to 10PM

LIQUIDATION!

DISCOUNT centers



**AS LITTLE AS \$5 DOWN
HOLDS ANY ITEM IN LAYAWAY
TILL CHRISTMAS!**

RECEIVERS & AMPS

TECHNICS SA-400
AM/FM 45 watt
stereo receiver with
0.04% THD* **\$176¹⁶**

PIONEER SX3400
15 watt per channel
receiver, 0.08% THD* **\$123.33**

TECHNICS SA-300
AM/FM 35 watt
stereo receiver with
0.04% THD* **\$147⁶²**

PIONEER SX 3700
AM/FM 45 watt
stereo receiver with
0.02% THD* **\$244⁴⁴**

TECHNICS SA600
70 watt per channel
receiver, 0.04% THD* **\$249.95**

TECHNICS SA-500
AM/FM 55 watt
stereo receiver with
0.04% THD* **\$198⁸⁸**

VECTOR VR2500
22 watt per channel
receiver, 0.3% THD* **\$189.99**

TECHNICS SU8011
25 watt per channel
amplifier, 0.08% THD* **\$199.95**

SPEAKERS

CERWIN VEGA CH-203
3-way bookshelf
speaker with 12"
woofer **\$149^{95ea}**

VERIT SS-12 **\$58^{88ea}**
*Direct from
California!*
4-way speaker with
12" woofer

RTR G40
2 way bookshelf
speaker, 8" woofer **\$99.95ea**

VERIT SS-14
4 way speaker with 12"
woofer **\$88.88ea**

TECHNICS F-2
Micro Series 2 way
speaker, 5" woofer **\$188.88**

RTR 300D
3 way tower speaker,
two 10" woofers **\$356.66ea**

ECI PROFILE 100
Three-way tower
speaker with twin
8" woofers **\$99^{95ea}**

APPLIANCES

SANYO EM 3200
2 power microwave
w/1.5 cu. ft. interior
and 25 min. timer
WAREHOUSE PRICE!

TAPES

BASF PRO III
Dual layer
ferrichrome
cassettes **5 FOR \$13²⁵**

MAXELL UD-XL II C-90
High-performance
high-level blank
cassette tape
WAREHOUSE PRICE!

\$78⁸⁹
Technics SL-D1
**TECHNICS manual
direct-drive turntable**

TAPE DECKS
NEW FROM TEAC
TEAC CX 350
Cassette deck with
metal tape
capability **\$199⁹⁵**

SANYO RD5035
Metal tape cassette
deck, full auto stop **\$189.95**

TEAC A-2000R
Open reel auto
reverse tape deck
with 3 heads **\$399⁹⁵**

TECHNICS RSM14
Soft touch metal tape
cassette deck **\$169.95**

TECHNICS RS-M8
Metal tape cassette
deck with auto stop
and flow meters **\$129⁹⁵**

VECTOR VCX500
Solenoid control
metal tape cassette deck **\$369.95**

TEAC A-2000
3-motor, 2-speed
7" open reel tape
deck **\$369⁹⁵**

TURNTABLES

TECHNICS SL-B2
Semi-automatic
belt drive turntable **\$88⁸⁸**

\$158⁸⁸
AUDIO REFLEX
stereo graphic
equalizer with
10 bands/channel
AUDIO REFLEX EQ-2

**ALL REMAINING DUAL
TURNTABLES** Incredible bargains
'Closeout Warehouse Price!'
AUDIO REFLEX MR130B
Slimline semi auto belt
drive turntable **\$64.95**
TECHNICS SLQ3
Buy this quartz direct drive turntable and
get a DISCWASHER record
care kit for NO EXTRA
CHARGE **\$199.95**

PIONEER PL-100
Auto return belt
drive turntable **\$84⁶⁶**

VIDEO
JAX 315 **\$1⁸⁶**
25 foot coiled
headphone
extension cord with
many uses!

CAR STEREO

SANYO FTC6
AM/FM cassette, auto
reverse, mini chassis **\$99.95**

JET SOUND JS120
50 watt, 10 band car
equalizer booster **\$119.95**

PIONEER KE3000/TS107
Supertuner AM/FM cassette car stereo
with digital readout, &
4" dual cone speakers **\$288.18**

PAGE CUD3032B
Underdash car
stereo cassette
player **\$24⁴⁴**

CUSTOM 2300 **\$19⁹⁵**
Car stereo power
booster: 25 watts
per channel.

QUANTITIES LIMITED!

**COMPLETE
SERVICE DEPARTMENT**
■ Qualified audio technicians!
■ Service or repairs on major
brands of audio equipment,
both in and out of warranty!
■ Fast, efficient service with
satisfaction guaranteed!

2234 East Bay Drive
Keene Plaza-Largo
586-3404

4043 W. Kennedy
Tampa
870-2346

10760 N. 56th St.
Temple Terrace
(near USF)
985-2212

CUSTOM MAKES IT EASY TO SAVE!
■ Most major credit cards
accepted!
■ Interest-free layaway!
■ Easy monthly payments
with approved credit!
* Minimum continuous power
output RMS at 8 ohms from
20-20,000 Hz.
** TM Dolby Laboratories

All items subject to prior sale. Some Demos & unboxed units, scratch & dents, some ones of a kind. Quantities Limited.

CUSTOM hi-fi DISCOUNT centers

Aide says Reagan will follow through pledge

WASHINGTON (AP) — Advisers to President-elect Ronald Reagan have drawn a list of possible government cutbacks totaling nearly 6 percent of the 1981 federal budget, a principal aide to Reagan disclosed Wednesday.

The areas where the cuts would be made were not disclosed, although it was indicated that none would be made in the defense budget.

Edwin Meese III, who is directing the Reagan transition into the White House, said a spending control task force drew up the list so that Reagan could fulfill a campaign pledge to cut the budget by 2 percent.

Democrats on the House Budget Committee challenged Reagan to honor that promise by voting Tuesday to set a budget ceiling that would force the president-elect to cut spending by \$17 billion, or about 2½ percent, from the current budget drafted by the committee's staff.

The committee action would reduce the budget from \$648.7 billion to \$631.7 billion and reduce the projected deficit from \$38.4 billion to \$25 billion.

A budget reduction of 6 percent in 1981 would equal nearly \$39

billion, enough to wipe out the entire deficit.

One of Reagan's top campaign pledges was to trim federal spending by 2 percent by eliminating fraud, waste, abuse and mismanagement from the budget.

Asked how the new resident

would accomplish that goal, Meese said a special task force already had targeted areas relating to "specific tightening up, specific cutting of administrative overhead rather than cutting of whole programs, although "some minor programs" may be eliminated

altogether.

"The list actually is much more than 2 percent. As a matter of fact, the list would probably account for nearly 6 percent of the budget," said Meese.

Reagan will "sift and choose from among the recommendations ... and then we'll

announce what revisions he feels are necessary in the budget to accomplish a 2 percent reduction," he said.

Meese did not identify any specific areas for cuts, although Reagan has said the defense budget would not be touched.

DIVORCE \$50*

Uncontested, No Children
No Property

Criminal (including drug related), Traffic, Wills, Incorporation, Adoption, Name Change, Custody & Support, Contested Divorce, Bankruptcy.

D.W.I. \$100*

1st Offense With Plea

**KERBEN and OSTER'S
METROPOLITAN LEGAL CLINIC**

Convenient to USF

14902 N. Florida Ave.
961-7770

11103 N. 56th St.
988-5225

7926 W. Hillsborough Ave.
885-1457

TYPEWRITERS

TYPEWRITER

SERVICE

Sun Coast Office Equipment

"Closest Typewriter Service to USF"

**WE BUY & SELL TYPEWRITERS
ESTIMATES, PICK-UP, AND DELIVERY**

Across From Terrace Plaza
8824 North 56th St.

985-1556

Career fair will be held in UC

The Special Services Program will sponsor a career fair at 2 p.m. Friday in CTR 255 to provide information on four occupations relative to the fields of business, communications and engineering.

Guest consultants will include Rebecca Buard, a reporter for WTVT, Channel 13; David Townsend, manager of public relations for Jim Walter Corp.; Jeff Darrey, president of Marketing Associates; and Bobby Granville, senior computer engineer for the Gyroscope Division of Sperry Corp.

Interested students and University personnel are invited to the career fair. For more information, call Sybil Patterson at 974-2645 or Ann Sankey at 974-4227.

How to Choose a Belt Buckle

*Ever wonder why cowboys
wear such fancy belt
buckles? Simple —
to keep their pants up.
You should wear a fancy
belt buckle for the
same reason.*



*If you're a grand national
steer roping champion, read
no further. Your buckle
problems are solved...
forever.*

*If you're not a grand national
steer roping champion, go to a store that
sells belt buckles. Find one or two that fit
your personality. Or your favorite brand of
car, boots, hat, etc. Or your favorite nickname
for your girlfriend.*

*Buy two or three
to suit yer mood
(or your girlfriend's)
Get the idea?*



*Buckle up and head for your favorite
saloon and a cold Busch®.*

Head for the mountains.

© Anheuser-Busch, Inc. St. Louis, Mo.

Good News

About Auto Insurance For You!

It pays to shop for auto insurance. If you believe you're paying too much, call us today for a free rate quotation. Maybe we can save you some money!

Criterion is a highly regarded, financially strong company which specializes in auto insurance. And you'll like our convenient payment plans too.

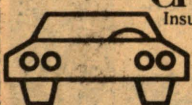
Call our local office today and find out whether we can lower your auto insurance costs. There's no obligation, of course, and we'll be glad to answer any questions you have about auto insurance.

CALL

(813) 837-1557

5827 S. Dale Mabry

Criterion
Insurance Company



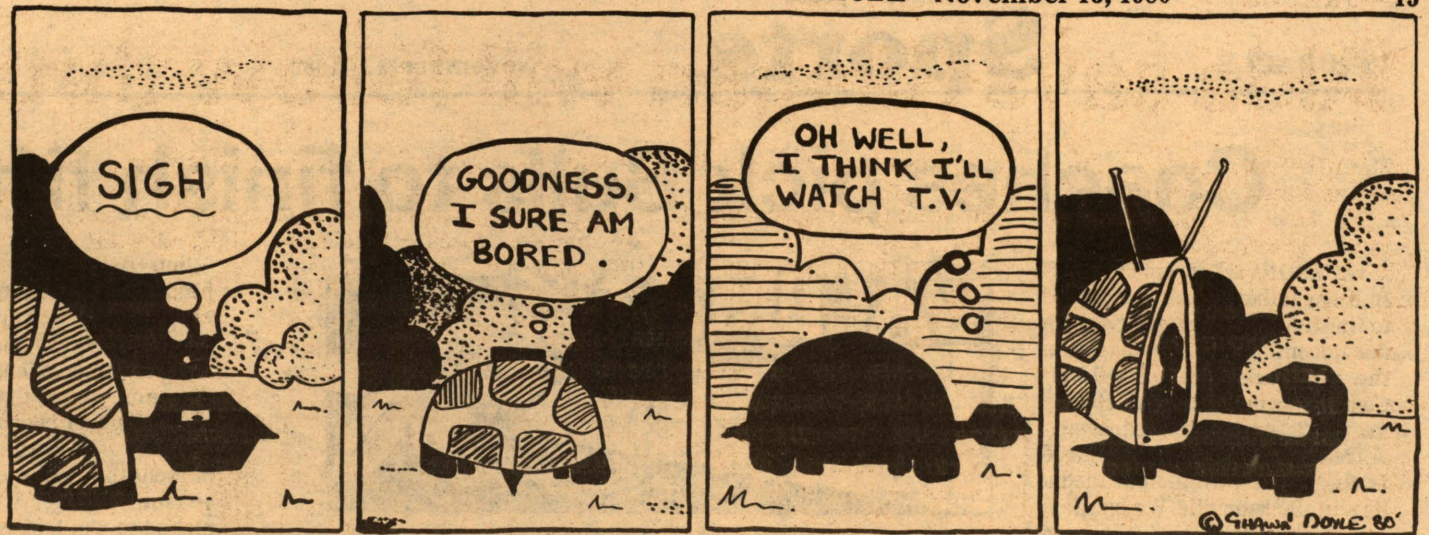
HOME OFFICE
WASHINGTON, D.C.

CLIP & SAVE

THIS AD

Zack & Friends

Shawn Doyle



Semester

Continued from page 1
school days when deciding on next year's calendar.

The semester system will begin after Qtr. 4, 1981, which ends in mid-August.

According to state guidelines the latest possible date for a semester to begin is Aug. 31.

"I'm concerned about the end of the fourth quarter and the beginning of the first semester being so close," Scheuerle said, "but we are constrained by the state."

Vice President for Student Affairs Dan Walbolt said, "It's an unfortunate situation, but you have to make the conversion sometime."

The calendar approved Wednesday by the faculty senate has school scheduled to begin on Aug. 31, 1981, and end on Dec. 19. An exam week between Dec. 14

and Dec. 19 is included in the proposal.

The 1981 fall semester includes the four holidays of Labor Day, Veterans Day, Thanksgiving Day and the day after Thanksgiving.

The second semester is scheduled to begin on Jan. 6, 1982, and end on April 29, which also includes an exam week between April 23 and 29.

The proposed spring semester will include a five-day break, but the date has not been designated yet.

Confusion still exists about the 1982 summer term.

The plan approved by the faculty senate includes three separate summer terms. The first term, running from May 10 to Aug. 11, consists of 66 total class days and no exam days. Another proposed term would begin May 10 and end June 11.

Scheuerle said the second 24-day term would enable students to fulfill their 15-hour summer requirements, which would be reduced to 10 semester hours, and still work summer jobs.

A third proposed term for the 1982 summer has a class schedule that would begin June 16 and end, at the latest, Aug. 11.

The longer summer term includes two holidays, and each of the shorter terms contains one holiday.

Vice President for Academic Affairs Greg O'Brien said he is concerned about students fulfilling course requirements for quarters before the semester conversion.

"This conversion means that students have to talk to their advisers about sequences of courses that occur in the quarter system, to complete them before quarter hours are changed to semesters," O'Brien said.

"I'll do my best to see that people don't get negatively affected by it (semester conversion)," O'Brien said.

During USF President John Lott Brown's open forum Wednesday, O'Brien said a course catalog for next year will be ready by April and a series of open forums will be held to help students pre-register for the 1981 fall semester.

Walbolt said a Board of Regents task force will make recommendations to the regents regarding tuition changes for the fall semester.

Walbolt said the BOR then will make recommendations to the Florida Legislature, which will make a final decision on tuition next spring.

"We've made some recommendations so far, but they've had nothing to do with the amount of fees," Walbolt said.

There have not been any decisions as to how the semester conversion will affect dormitory payments, but Walbolt said the issue will be decided before housing contracts are sent to students in April.

CUSTOM DESIGN ALL YOUR IDEAS!

come in and discuss
Gift Certificates Available

5110 1/2 Fowler (near CDB's)
Wed.-Sat. 11-6
Mary Lynn Rooke



RUMORS

Hair Boutique

"Unisex Precision Haircuts"

Redken perm
\$25⁰⁰

Includes cut and condition
(long hair extra). Bring this
ad.

977-4116

2002 E. Fletcher

Oracle Call 974-2620

Bushwhacker's Hair Cuttery



Grand Opening Special!

Shampoo, cut-n-blo dry
Only \$7.⁰⁰

8906 N. 56th St.

Temple terrace
Across from Publix

Offer good with coupon Expires 11-29

10% Discount

TO ALL USF STUDENTS & STAFF
with **USF - ID's** ONLY

JUST COME ON IN -
PRESENT YOUR USF
ID & GET YOUR
DISCOUNT.

This offer good on
all menu items.

RAX
ROAST BEEF

1701 E. Fowler Ave.
(OPP. UNIV. SQUARE MALL)

OFFER VALID THROUGH FALL QUARTER 1980

NOW APPEARING:



TAMPA

- A disco and top forty band
- No cover, no minimum
Mon., Wed. and Thurs.
- **LADIES** drink 1/2 price Tues. nite
- Tampa's only double decker bar
- Secluded booths in the "Loft"
- Provides romantic privacy

**THE
STABLE**

"That Rustic Den of Romance"

THE STABLE LOUNGE

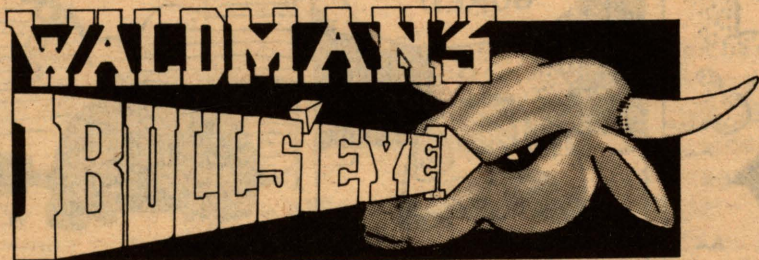
UNIVERSITY SQUARE MALL
(North Side, next to Penney's)
Fowler Ave., Tampa
Phone: 977-2154

Coaches pick Bulls to finish fifth in SBC

JACKSONVILLE — The USF Bull basketball team was picked to finish a surprising fifth during the upcoming regular season in the seven-member Sun Belt Conference in a poll conducted by the SBC's basketball coaches.

The poll, which was announced at the SBC's fifth annual media day in Jacksonville Wednesday, is a yearly ritual that has been practiced since the conference's inception four years ago.

Although the Bulls are coming from a dismal 6-21 season, that saw them finish in the SBC's



cellar, the conference coaches apparently felt that the addition of first-year coach Lee Rose and the soon-to-be-opened Sun Dome would help to turn the tide this

year.

The University of South Alabama was picked to win the SBC regular season, picking up a maximum of six first-place votes (coaches cannot vote for their own teams).

The Jaguars' 42 points easily outdistanced last year's basketball conference champ and recipient of the other first-place vote, Virginia Commonwealth University, which got six points. Jacksonville University and the University of Alabama — Birmingham were selected to finish tied for third.

USF was next, followed by the University of North Carolina — Charlotte, and last place was forecast for Georgia State University.

Sun Belt conference coaches have never been wrong in choosing the regular season first-place finishers in their pre-season prognostication. But at the same time, that pre-season pick has never been correct about a Sun Belt conference tournament that followed the regular season. South Alabama was picked to win last year's regular season, which they did; however, the Jaguars faulted in the tournament.

This will be the first year with a seven-team conference field. The

seven teams will create a new format for the season-ending championship tournament that will be played here in Jacksonville Feb. 27 to March 1, 1981. A first-round bye will go to the team with the best regular season finish; something that will make the conference games and the conference season standings all the more critical.

Each conference coach received a chance to talk to the media Wednesday about the prospects of his team for the new season.

ATTENTION

*New evening medical service
is now available in Temple Terrace*

Open: Mon.-Fri. 5 p.m. to 8:30 p.m.

- Pap Smears
- Family Planning
- Immunizations, Flu Shots
- Prescriptions
- Other Minor Medical emergencies

Temple Terrace Evening Medical Center

220 Bullard Pkwy. (next to Temple Terrace Library)

985-5177

24 hr. Answering Service
No Appointment Necessary

**Tell 'em
where
you saw
it!**



*Tell our advertisers
you saw their*

ad in the

ORACLE

Q105

IS

WRBQ-FM

AUTO PAINTING & BODY WORKS

BEST QUALITY WORK
IN TAMPA



Starting as low as
\$139⁹⁵

- FREE ESTIMATES
- INSURANCE CLAIMS WELCOME
- 1 DAY SERVICE BY APPT.
- 8000 colors



INCREASE THE VALUE
OF YOUR CAR TODAY

9101 N. NEBRASKA AVE.

Corner of Busch & Nebraska

FACT-O-BAKE

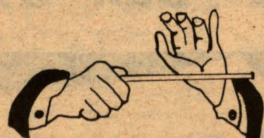
AUTO PAINTING & BODY WORK

VISA

935 - 8248

master charge

MAESTRO'S



TAMPA'S NEWEST JAZZ CLUB

NIGHTLY ENTERTAINMENT

Thursday thru Saturday

Suzi and Friends

Sunday Special Jam Session

The Macars and Friends

Musicians Welcome

Monday Thru Wednesday

Jazz Pianist John Chapman

(Sit-ins come by)

A MEETING PLACE FOR MUSIC LOVERS

Your Host: **ALEX MACAR**

14727 N. Florida Ave.

961-5090

ORACLE COUPONS

SAVE

You a Bundle

Clip and carry them along.
With savings like these
you can't go wrong.



HAMMERHEAD

Dive
Shop

Learn to Dive...
2 for the price of 1

★ Equipment special!

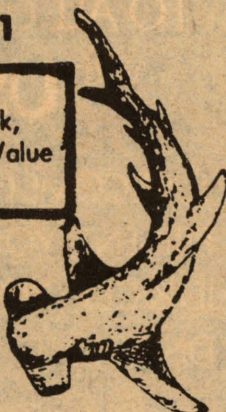
Beginner's package — Tank,
regulator, backpack — \$450 Value
SPECIAL \$249

- P.A.D.I. Certified Instruction.
- All Pro brands of Scuba equip.

SALES-SERVICE-RENTALS
8030 NEBRASKA AVE.

VISA

935-4200



FSU ranked third in poll

ORACLE—November 13, 1980

17

By the Associated Press

Despite its failure to advance higher than No. 3 in the college football poll, Florida State has improved its national statistical rankings and is now the undisputed No. 1 defensive team in the nation.

Florida State faithful had been expecting the third-ranked Seminoles, also No. 3 last week, to move up in The Associated Press sports-writers poll because Notre Dame, ranked No. 1 last week, was able to manage only a tie with Georgia Tech while FSU was pasting Virginia Tech 31-7.

Although Notre Dame did drop to sixth, Southern California, with a 7-0-1 record, vaulted ahead of the 9-1 Seminoles into second place.

It may be little consolation, but by holding Virginia Tech to only 140 yards, Florida State climbed to No. 1 in overall defense, giving up a meager 203.3 yards per game.

Last week, FSU had trailed Virginia Tech and Pittsburgh, which were tied for the top defensive spot. Now the defensive rankings show Pitt, Nebraska and Virginia Tech, all previously

defeated by Florida State, lined up right behind the Seminoles.

Before defeating Virginia Tech, the Seminoles were already No. 1 in scoring defense and they retained that ranking with a 7.2 point per-game average.

Linebacker Reggie Herring, a senior from Titusville, led the FSU defensive charge against the Gobblers and was named AP's Southeastern Lineman of the Week for his performance — 15 tackles, eight of them unassisted and two quarterback sacks.

Herring, however, was still angry about the polls, particularly about the coaches poll conducted by United Press International. That showed Florida State fourth behind Nebraska despite Nebraska's loss to the Seminoles earlier this year.

"It's frustrating," Herring said. "The poll people can't accept the fact that the big boys are being pushed aside. That's the college football stereotype. Everyone thinks that those teams are so great and that a team like Florida State isn't as good as they are."

"The polls have lost their

meaning to me. They don't mean jack doodle."

Florida State also retained its No. 1 ranking in net punting — after return yardage is subtracted — with a 43.4 yard average and Rohn Stark continued in the number two position in individual punting statistics

with a 45.7 yard average.

After a brief fall, FSU place kicker Bill Capece returned to the No. 2 spot in scoring with 9.9 points per game, trailing only Southern Mississippi running back Sammy Winder who has an 11.3 average.

Capece also retained his No. 2 spot in field goal kicking, averaging 2.1 three-pointers per game. He is only two short of

setting a new national record for most field goals in a season.

The senior from Hollywood has already nailed down the Florida State single-season scoring record and collegiate single-season record for kickers with 99 points.

In team offense, the Seminoles retained their No. 6 spot in point production, averaging 33.5 points per game.

WILD STALLION PUB



HAPPY HOUR

\$2 Pitcher & 40¢ draft

Mon - Fri 4 - 7 pm

OYSTER HOUR

Oyster - 10¢ each
Everyday 5 - 7 pm

LADIES NIGHT

Thurs & Sun 8-10 pm
Ladies drink FREE

LOWENBRAU NIGHT

Wednesday Night

Special 1³⁵ Pitcher

Prizes & Surprises Tuesday Night

Busch Bash

1502 E. Fletcher
Corner of 15 & Fletcher
Open 11am - 2 am
Phone: 971-9090

Come in and enjoy our
New Electronic games,
pool table, oysters,
sandwiches and more...

STUDENTS COMMAND



10% OFF COMMAND PERFORMANCE

Students save 10% on all Command Performance Services with a FREE Student ID Card. Including the Performance Haircut. The haircut that continues to perform for you and your active lifestyle, long after you've left our shop. Shampoo, Performance Haircut are designed for both men and women. Appointments are not necessary. So come in for your FREE ID Card and let us perform for you.

Command Performance®

HAIRCUTS FOR THE LOOKS THAT GET THE LOOKS.

University Square Mall
977-4299

©1980 First International Services Corporation

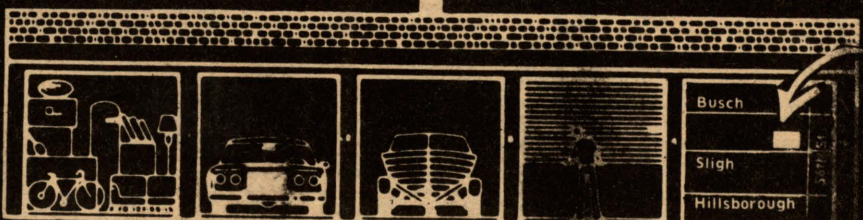
HOLIDAY SPECIAL!

TWO MONTHS RENT
FOR THE PRICE OF ONE!

..... PLUS

DINNER FOR TWO AT
TUNG TUNG CHINESE RESTAURANT
OR CDB ITALIAN RESTAURANT

**Ps PUBLIC
STORAGE®
RENTAL SPACES**



• Storage space by the month. • Resident managers. • Largest private storage company. • Electronically and camera protected.

Phone 988-8052

6940 N. 56th Street, Tampa

SAFE

Continued from page 3
never use it, but at least they'll know about it," Buckley said. She added that a lot of women feel embarrassed to call the SAFE team because they would look like "chickens." But she said walking alone at night on campus is a "very real fear."

SAFE team members are easily recognized by their bright red and yellow T-shirts with "SAFE-TEAM" on the front and their phone number — 974-2401 — on the back.

Steve Sayers, working as a dispatcher Monday night, said he receives between five and ten phone calls a night. "It's usually regulars. We have three of them on Monday night," he said, adding that most callers are female.

Doug Konselman, a SAFE team member, said half of the people who use the SAFE team do not call in, but ask to be escorted when they see a team walking.

Team member Andy Winer said if members are not escorting anyone, they will approach persons walking alone, usually

women, to see if they would like an escort. Cindy Hollingsworth, also a team member, said about 50 percent of the people they approach have never heard of the SAFE team, but most accept its services.

Amy Ecker, a freshman who requests an escort every Monday night, said, "I wouldn't be taking night classes if the SAFE team wasn't here, because I wouldn't walk alone at night."

Kim Myers, another Monday night regular, said before she learned of the SAFE team (from the Oracle advertisement), she would "run alone from class to the dorms."

"A lot of women and handicapped persons have said they wouldn't take night classes without the SAFE team," Buckley said.

Winer said there are many poorly lit areas on campus. "A lot of places are just a joke," he said, "especially from the business building to the Sun Dome Parking lot, between the library and the Arts and Letters building and in the remote parking lots. You just can't see."



SAFE team members escort students, faculty and staff across campus from 7 to 11 p.m. Sunday through Thursday. The service employs 38 and is funded by the USF Student Government.

Classified Ads

1 PERSONALS

The CARBONELL CONSERVATORY needs a viola player for chamber music sessions. Call 626-6888, evenings 988-0971. 11-14

SOLAR WINDOW FILM for cars and homes. Stops heat, fade and glare. Smoked and bronze reflective films, expert installation. Fully guaranteed, reasonable prices. Tom 886-5183. 11-12

Need a tutor to teach me statistics over Christmas vacation. Call 935-5664 after 6:00 p.m. 11-17

MITCH (JULIUS) — I can't ROME the streets looking for you. Call 985-3955. Toni (the witch). 11-13

Typewriters. Highest prices paid for portable and electric typewriters. Call Sun Coast Office Equipment today. 985-1556. 12-4

BUTCH, falling in love was never so complicated! Remember- you've got a permanent friend! O.K.4.U? I love ya—"Dr. D." 11-13

I need to buy two tickets to Van Halen for Saturday night in Lakeland. If you have two to sell, please call Tammy at 977-8102. 11-14

GET PSYCHED for Raunchy Ranch Y'all!! Yahoo! It's only a week away! 11-13

The Sisters and Pledges of Alpha Delta Pi are proud to welcome Ken Brady and Jimmy Sumner to our family. And to all of our Diamondmen... Thanks so much for last night's party! We love you all! 11-13

DIAMOND BALL '80 is on the way, and the A-D-Pi's would like to say: starting Friday the fun is on, and the Pi's are ready to party at the "DON". 11-13

ADVOCATE & ALLY, you two have made this quarter worthwhile. Thanks for being there. Marty. 11-13

Yam: Have a very happy birthday. Love always, Zwack. 11-13

Torri, Happy fifth anniversary. You're in my heart and in my soul. With love John. 11-13

KAREN — It doesn't matter if it's today or tomorrow, I Love You. Don't Stop Now. Love Randy. 11-13

2 ANNOUNCEMENTS

SPRING QUARTER IN NYC. NYC campus in Brooklyn. Full credit in art, theatre, urban studies. Housing \$350, 2 months. Limited, apply now. Lupton, SOC 282, 2536. 12-8

Applications are being accepted for Director of the Legal Guidance Center in CTR 156, Wednesday (November 12) through noon Friday (November 13). Background in law and counseling required. 20 hr-wk, small salary compensation. 11-13

2 ANNOUNCEMENTS

STUDENT GOVERNMENT is accepting applications for Director of Off Campus Housing. 20 hr.-wk., paid position. Pick up application in CTR 156, deadline is Nov. 13th, noon. 11-13

BAHA'I FIRESIDE — Everyone is welcome to an informal discussion of the Baha'i Faith SOC 148 every Thursday 8 p.m. 11-13

The Engineering College Council will hold senate elections today and Friday in the Engineering Building Lobby. Please Vote! 11-13

4 INSTRUCTION

GUITAR INSTRUCTION-Develop your skills in self accompaniment and improvisation techniques. Beg.-Adv. Hesh 985-2632. 11-21

5 EVENTS

PRAISING-Christian music on Crescent Hill. Thursday, Nov. 13, 7:00. Sponsored by Baptist Campus Ministry. 11-13

VAN HALEN tickets. Call Mike 971-1463. 11-14

6 RIDES & CARPOOLS

LIFT NEEDED: Van Halen, Saturday — Pat Benatar, Sunday. Split gas, etc. Jeff, 328 Fontana, 971-3720. 11-14

7 TRAVEL OPPORTUNITIES

WANTED: Students looking for adventure. Exchange at over 30 universities across the USA through the National Student Exchange. Call: 2536. 12-8

8 LOST & FOUND

Lost-small gold ring with small diamond. Reward. Elaine, Cleawater 595-8400 (call collect). 11-13

FOUND-one wristwatch in Learning Lab. Come to EDU 123 to identify. 11-15

11 SERVICES OFFERED

DEAN ACCREDITED typing service: Thesis, Dissertations, term papers, book editing, publisher's representative. 971-4377 (just off campus). 12-8

SECRETARIAL CONSULTANTS. 7628 N. 56th St., Suite 7, 988-0308. Professional typing for letters, thesis, dissertations, resumes. Welcome walk in clients. 12-8

"PROFESSIONAL TYPING SERVICES" IBM. Papers, dissertations, theses, resume writing. APA-Turabian specialty. Symbol Element. 985-5650. 11-15

Typing — Full-time professional typist. IBM. Specialize APA, Turabian. Spelling, correcting and good proofreading part of service. Nina Shiro. 961-2348. 11-14

WANT TO REALLY PLAY GUITAR? Bass? Sight read, improvise, arrange! Private lessons. Call Andy Roemer, 962-4180. 11-26

11 SERVICES OFFERED

UNISEX CUTS-\$3 per cut, licensed. Tuesday thru Saturday, 9 a.m.-5 p.m. Linda 985-3661. 12-3

12 HELP WANTED

Babysitter wanted. Weeknights 9:30 p.m.-2:30 a.m. References required. 971-7200. 11-13

ENGINEERS — Degree in ME with 6 months-2 years "hands-on" experience in hydraulics, and electrical systems for local industry. Excellent growth position-competitive benefits and starting salary. Send resume to: Personnel Manager, Box 4490, Clearwater, FL 33518. 11-19

Office Assistant—20-25 hrs-week; afternoons only. Type 30 wpm. Nice appearance. Please call 977-8804. 11-13

Part time-Full time jobs. Flexible hours. Great job for college students. Earn \$7.01 per hour & gain valuable experience. For personal interview call 877-6072. 11-13

Tis The Season To Make \$Money\$. Sell great Christmas item to friends, relatives or door to door. Easy money! Work your own hours. Paid on Commission. Call 985-7233, 10-5. 11-13

OVERSEAS JOBS-Summer-year round. Europe, S. Amer., Australia, Asia. All Fields. \$500-\$1200 monthly. Sightseeing. Free info. write: IJC, Box 52-FL 6, Corona Del Mar, CA 92625. 1-12

Part & Full time Sales people needed. Earn up to 20k. Hours are flexible. No experience necessary. Apply in person Nov. 19th between 5-6:30 p.m. At Recreational Warehouse, 14701 N. Nebraska Ave. 11-19

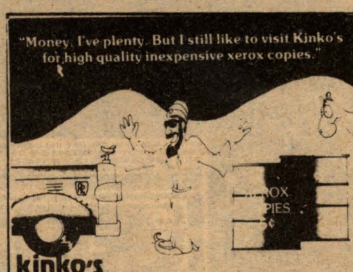
NOW HIRING! Neat, mature waiters. Ability to handle and entertain people is a must. Tips (\$) are as good as you are! Call 962-6936 between 2 & 5 p.m. \$ Melting Pot S. 11-17

Tampa Bay Rowdies ticket office. Part-time workers needed. 20-25 hrs-wk, during day call 870-1122. 11-14

17 APARTMENTS & HOUSES FOR RENT

QUIET, Natural Beauty. .2 BR, 1 bath, \$240-\$275. Office 11700. 58th ST. Ph. 988-0886. 12-8

BRAND NEW DUPLEX! \$800 2 BR, 1 bath, WOODED LOT. 13221 N. 22nd St., ph. 988-0863. 11-8



Kinko's Copies

High Quality Xerox Copies
Only 5c

No Minimum!

5112 1/2 E. Fowler
near CDB's Pizza

988-3950

17 APARTMENTS & HOUSES FOR RENT

Female Fontana Contract 4 sale-Sherree Rm. No.403 or call 971-6305. Must be sold by Qtr. II. 11-17

Unfurnished 2-bedroom, air, new carpet, students, petless. Close to USF. 229-6579. 11-14

Female Fontana Contract for sale-7th floor. Transferring Qtr II. Must sell. Call 971-8768. 11-13

Sublet: One bedroom apartment Tropical Gardens. \$170 month \$180 security deposit. Move in now \$280. Two months left on lease. 977-4977 after 3. 11-17

18 APARTMENTS & HOUSES TO SHARE

FEMALE ROOMMATE for Qtr. II on. Two bedroom furnished townhouse condo. Preferably non-smoker. \$200 month plus 1/2 electric. Call 985-3848. 11-14

Female roommate need to share 2 bedroom apt. near USF. Furnished except bedroom. Call Jill 977-6152. 11-14

Wanted female roommate. Furnished two bedroom at Burlington Green. Upper classman preferred. 971-1730. 11-14

Male roommate needed. \$135 total. New furniture, pool, AC, beer in refrigerator! Call Tom 971-9485. 11-14

Need responsible, non-smoking female roommate for 2 bed-2 bath apt. Rent \$125. Mary 988-2801. 11-14

FEMALE ROOMMATE needed: Thanksgiving (no later than Dec. 1) apt. semi-furn, \$125 mo. Non-smoker. Call 977-1885. 11-17

Visiting professor needs furnished apartment for Quarter II. Please call the English department (extension 2421). 11-19

Female roommate-2 br. apt. close to campus, non-smoker, reliable, 90 month, 1-3 utilities. 971-1213. 11-17

20 FOR SALE — Miscellaneous

DESIGNER JEANS-Discount prices - guys & girls. Jordache, Klein, Sasson, Vanderbilt, Valente. While they last-The Great Pants Factory-1514 East Fowler Ave.-Across from Wendy's in the Jay's Shoe Shopping Complex. 977-7753. 11-14

Sale on Levi straight-leg jeans-\$15.99. We have western boots & western shirts for men & ladies too. Also 100's of cowboy hats. Only 10 min. from campus. First stop light south of Busch Blvd. Bermax Western Wear. 8702 Nebraska Ave. 12-2

20 FOR SALE — Miscellaneous

SLR Minolta, 50 MM F1.4, 28 mm, F2.8, Series one F3.5 macro-Telephoto 70-210 zoom, flash, tripod, all cases. 985-2632. 11-13

Living and bedroom furniture, albums, guitar, shelving, bike carrier rack, much more. 985-2177 after 5. 11-14

MALE FONTANA CONTRACT for sale for quarters II & III. Contact Tom Harmon in room 622 or leave message at room 616. 11-13

22 RADIO, TV, STEREO

Yamaha CA610 II Amp, six months old \$200. Philips Turntable with Cartridge \$100. 977-4468. 11-13

Near new Auto Stereo System. Pioneer Supertuner AM-FM Cassette & 2-1/2 lb. Cerwin Vega Speakers. \$270 value \$150. CB w-firestick antenna — \$110. 971-9749 after 10. 11-13

23 FURNITURE & APPLIANCES

FOR SALE: Queen size waterbed with heater. \$115. Call 977-4117. 11-14

25 AUTOMOBILES

\$40 cash for junk cars complete. Fast free pick-up with or without wheels. 223-5195. 8-12

\$40 and up for junk cars complete. Fast pick-up. 884-8642 8 a.m. to 9 a.m. 8-12

\$45 and up for complete cars. Free towing. 626-1929. Evenings, 677-3993. Parts for sale. 12-3

26 MOTORCYCLES, SCOOTERS

1980 Suzuki 550L-Cover, casesavers, adjustable: backrest, luggage rack with locking box, 10 months left on dealer's warrantee. \$2000 985-2916. 11-13

1978 Honda Express-Moped — cheap transportation, good condition. Call 239-2580 and make offer. 11-17

28 SPORTS, RECREATION

IRISH'S CLAY TENNIS COURTS — Rental \$2. Reserve 977-0529. 14202 N. 42nd St. Discount Pro Shop, shower, behind pro's house. Off Fletcher at Fontana Dormitory. Between Greenery Pub and Vestavia Apartments. Oscillating Ball Machine \$3. Private lesson on machine \$6. Rackets on sale. Adidas, Laver, Nike leather shoes, \$31. Dunlap canvas \$15. Adidas \$28. Wilson \$16. Tennis Penn or Wilson Balls \$2. Racket ball stringing \$6. 11-13

Classifieds Work!

974-2617



SOFT CONTACT LENSES \$169.00
\$25.00 OFF above price with USF ID
 (hurry limited time only)

COMPLETE WITH EYE EXAM AND:
 AO or Bausch & Lomb Soft Contacts
 All cleaning & care accessories including case
 Follow up visits & consultations
 Free trial fitting

STRONG VISION CENTER
 10939 N. 56th ST. SHERWOOD FOREST TEMPLE TERRACE, FLA.
 10-6pm MON-FRI 10-2pm WED & SAT
 985-6941