

2022

Analysing Economic Costs of Invasive Alien Species with the Invacost r Package

Boris Leroy
Sorbonne Université

Andrew M. Kramer
University of South Florida, amkramer@usf.edu

Anne-Charlotte Vaissière
Université Paris-Saclay

Melina Kourantidou
University of Southern Denmark

Franck Courchamp
Université Paris-Saclay

See next page for additional authors

Follow this and additional works at: https://digitalcommons.usf.edu/bin_facpub

 Part of the [Integrative Biology Commons](#)

Scholar Commons Citation

Leroy, Boris; Kramer, Andrew M.; Vaissière, Anne-Charlotte; Kourantidou, Melina; Courchamp, Franck; and Diagne, Christophe, "Analysing Economic Costs of Invasive Alien Species with the Invacost r Package" (2022). *Integrative Biology Faculty and Staff Publications*. 531.
https://digitalcommons.usf.edu/bin_facpub/531

This Article is brought to you for free and open access by the Integrative Biology at Digital Commons @ University of South Florida. It has been accepted for inclusion in Integrative Biology Faculty and Staff Publications by an authorized administrator of Digital Commons @ University of South Florida. For more information, please contact scholarcommons@usf.edu.

Authors

Boris Leroy, Andrew M. Kramer, Anne-Charlotte Vaissière, Melina Kourantidou, Franck Courchamp, and
Christophe Diagne

APPLICATION

Analysing economic costs of invasive alien species with the INVACOST R package

Boris Leroy¹  | Andrew M. Kramer²  | Anne-Charlotte Vaissière³  |
Melina Kourantidou^{4,5}  | Franck Courchamp³  | Christophe Diagne^{3,6} 

¹Unité Biologie des Organismes et Ecosystèmes Aquatiques (BOREA, UMR 8067), Muséum national d'Histoire naturelle, Sorbonne Université, Université de Caen Normandie, CNRS, IRD, Université des Antilles, Paris, France; ²Department of Integrative Biology, University of South Florida, Tampa, FL, USA; ³Université Paris-Saclay, CNRS, AgroParisTech, Ecologie Systématique Evolution, Orsay, France; ⁴Institute of Marine Biological Resources and Inland Waters, Hellenic Center for Marine Research, Athens, Greece; ⁵Department of Sociology, Environmental and Business Economics, University of Southern Denmark, Esbjerg, Denmark and ⁶CBGP, Univ Montpellier, CIRAD, INRAE, Institut Agro, IRD, Montferrier-sur-Lez, France

Correspondence

Boris Leroy
Email: leroy.boris@gmail.com

Funding information

BiodivERsA-Belmont Forum, Grant/Award Number: BMBF/PT DLR 01LC1807C

Handling Editor: Aldo Compagnoni

Abstract

1. The reported costs of invasive alien species from the global database InvaCost are heterogeneous and cover different spatio-temporal scales. A standard procedure for aggregating invasive species cost estimates is necessary to ensure the repeatability and comparativeness of studies.
2. We introduce here the INVACOST R package, an open-source software designed to query and analyse the InvaCost database. We illustrate this package and its framework with cost data associated with invasive alien invertebrates.
3. First, the invacost package provides updates of this dynamic database directly in the analytical environment R. Second, it helps understand the heterogeneous nature of monetary cost data for invasive species, processes to harmonize the data and the inherent biases associated with such data. Third, it readily provides complementary methods to investigate the costs of invasive species at different scales, all the while accounting for econometric statistical issues.
4. This tool will be useful for scientists working on invasive alien species, by (a) facilitating access to and use of this multi-disciplinary data resource and (b) providing a standard procedure which will facilitate reproducibility and comparability among studies, one of the major critics of this topic until now. It should facilitate further interdisciplinary works including economists and invasion ecology researchers.

KEYWORDS

biological invasions, drivers of change in biodiversity, economic costs, economic impacts, ecosystem services, invasive alien species

This is an open access article under the terms of the [Creative Commons Attribution-NonCommercial](https://creativecommons.org/licenses/by-nc/4.0/) License, which permits use, distribution and reproduction in any medium, provided the original work is properly cited and is not used for commercial purposes.

© 2022 The Authors. *Methods in Ecology and Evolution* published by John Wiley & Sons Ltd on behalf of British Ecological Society.

1 | INTRODUCTION

The economic costs of invasive alien species (IAS) are a case of heterogeneous data with different spatio-temporal scales that pose issues for global or comparative studies (Diagne, Catford, et al., 2020; Diagne et al., 2020b). Yet such studies are needed because biological invasions are a major threat to biodiversity which receive insufficient attention from decision makers and the general public (Courchamp et al., 2017). Adequately addressing the costs of biological invasions requires being able to respond to a large array of questions, such as: how are costs distributed across space, time, taxonomic groups and economic sectors? How have these costs evolved over the last decades and can they be expected to evolve for the decades to come? How do damage and loss costs compare to management expenditures?

The absence of a standard procedure to standardize cost values for IAS may lead to the development of idiosyncratic and heterogeneous methods, resulting in a lost opportunity for the repeatability and comparativeness of studies. A promising solution lies in open-source software providing frameworks to openly share data and methods altogether (e.g. Michener & Jones, 2012). Therefore, we developed the `INVACOST R` package as a tool to query and investigate *InvaCost* economic costs of IAS world-wide (Diagne et al., 2020a). This database is global in extent and covers many taxonomic groups, ecosystem types, activity sectors and temporal and spatial scales. The `INVACOST R` package and its framework have already been used, thus far, in 29 publications to describe the economic costs of biological invasions at multiple spatial scales (e.g. Diagne et al., 2021; Haubrock et al., 2021).

We developed the `INVACOST R` package with three objectives. The first was to provide the up-to-date database directly into R, relieving users from the burdens of compatibility issues and errors associated with loading such a large dataset in R. Second, the package helps users understand the nature of monetary cost data for IAS and the inherent biases associated with such data with a step-by-step tutorial provided with the package. The third objective was to provide two complementary ways to analyse these data. One is a standard method to derive cumulative and average cost values over different periods of time, with relevant visualization methods. The other derives the trend of costs over time with different modelling techniques accounting for the statistical issues of such econometric datasets, such as nonlinearities, heteroskedasticity, temporal autocorrelation and outliers. By meeting these objectives this software provides widespread access to these data and facilitates comparisons across studies in a straightforward manner. However, we strongly recommend working with the `invacost` data in interdisciplinary teams that incorporate social science expertise (i.e. economics) in order to match each specific problems with the most suitable methodological choices in handling and avoiding improper use of the data. For maximum flexibility for addressing individual researcher needs, we encourage users where necessary to duplicate the package source code and adapt it to their needs, for example altering the standardization across currencies. This possibility to adjust the code

as best suited to one's needs, coupled with the necessary economic expertise allows for flexibility and versatility in answering different questions using the necessary tools and suitable conditions.

In the following sections, we describe the rationale and methods implemented for these objectives along with relevant literature. We do so with the illustration of a simple case study on the global monetary costs caused by invasive invertebrates (i.e. all non-chordate animals).

2 | THE INVACOST R PACKAGE

The package requires a standard installation of R (version $\geq 4.0.0$) and is available on the Comprehensive R Archive Network (see Appendix A.1 for a code example). Upon installation eight dependencies will be automatically installed: `dplyr` (Wickham et al., 2020), `earth` (Milborrow, Derived from `mda:mars` by Hastie T and Tibshirani R, & Uses Alan Miller's Fortran utilities with Thomas Lumley's `leaps` wrapper, 2019), `ggplot2` (Wickham, 2016), `lmtest` (Zeileis & Hothorn, 2002), `mgcv` (Wood et al., 2016), `quantreg` (Koenker, 2020), `robustbase` (Maechler et al., 2022), `sandwich` (Zeileis, 2004) and `scales` (Wickham & Seidel, 2020). All the package code is open-source, available on the GitHub repository, where users can also contribute or submit issues: <https://github.com/Farewe/invacost>. All objects created in the package have associated generic functions, meaning that if users want to see their object in the console or plot it, they will get a user-friendly output with useful information or see appropriate graphical representation of their results (Figure 1), designed on the basis of recommended practices for data presentation, especially at small sample sizes (e.g. Weissgerber et al., 2015). In addition, output objects are lists composed of the necessary elements for reproducing the results: input data, chosen arguments and analysis results. These objects can be stored (e.g. with `saveRDS`) and used as electronic supplementary material to ensure replicability.

3 | OBJECTIVE 1—QUERYING, CLEANING AND FILTERING THE *InvaCost* DATABASE

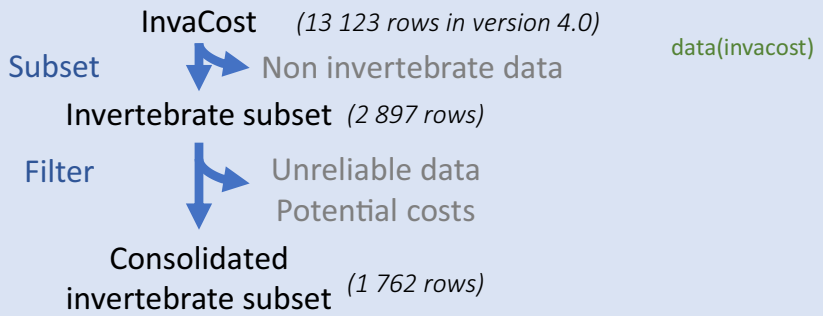
The *InvaCost* database is a dynamic database where existing information can be corrected and new data regularly added. Every new release of the database is checked for errors and inconsistencies with dedicated testing procedures in the package. The latest version of the *InvaCost* database (accessible at <https://doi.org/10.6084/m9.figshare.12668570>) is shipped with every release of the R package. The database can be accessed with the command `data(invacost)`. To make sure that users understand the database and the package, we provide a step-by-step tutorial with thorough explanations on the GitHub repository (<https://github.com/Farewe/invacost>).

The database loaded in R contains over 60 fields (see here for a full description <https://doi.org/10.6084/m9.figshare.12668570> and here for frequently asked questions https://farewe.github.io/invacost_FAQ/, such as (a) how to collate data from the literature

1. Query, filter and clean

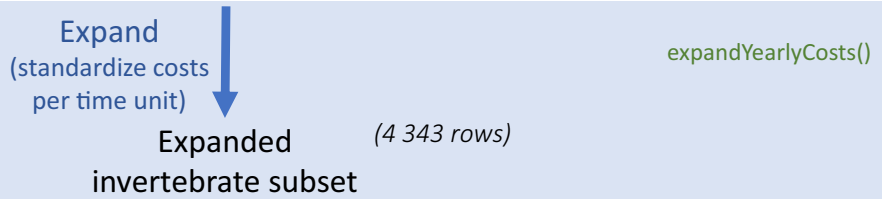
Cost_ID	Taxon	Cost values	Impact period	Reliability
1	A	99	1980-1982	High
2	B	1000	2001	High
3	C	550	1850-2010	Low
4	D	300	1997-1999	Low

Cost_ID	Taxon	Cost values	Impact period	Reliability
1	A	99	1980-1982	High
2	B	1000	2001	High



2. Homogenise

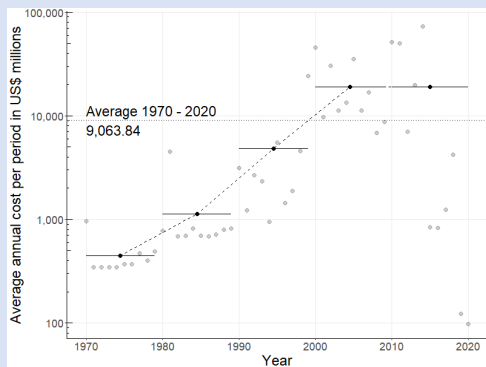
Cost_ID	Taxon	Annual cost	Impact year	Reliability
1	A	33	1980	High
1	A	33	1981	High
1	A	33	1982	High
2	B	1000	2001	High



3. Analyse

summarizeCosts()

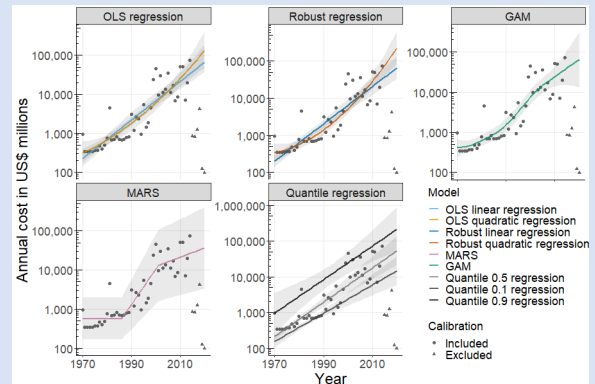
3a. Cumulative costs and average annual costs



- ✓ Cumulative cost: **US\$ billion 462.3** in total
- ✓ Average annual cost: **US\$ billion 9.1 / year**
- ✓ Increase in decadal averages

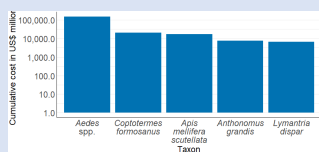
modelCosts()

3b. Model the trend of costs over time

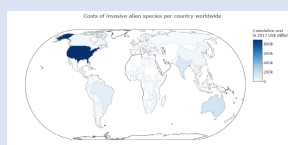


- ✓ Significant increase in costs over time
- ✓ Convergence across models
- ✓ Predicted annual cost for 2014: **US\$ billion 26.4 – 62.0**
- ✓ Non-linear trends pinpointing dataset specificities

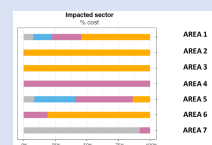
Specific analyses



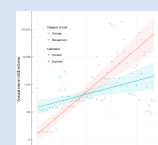
✓ Costliest IAS



✓ Geographical distribution



✓ Impacted sectors



✓ Damage vs. management

FIGURE 1 Conceptual framework of analysing monetary costs of biological invasions within the *INVACOST* R package. We illustrate this framework with the example of a subset of the database (invertebrates, i.e., all non-chordate animals). The framework depicts the three objectives detailed in the manuscript. We indicated in green the functions used in the *invacost* package. In 1 and 2, we illustrate with simplified tables how the structure of the database changes as the database is subsetted, filtered and then expanded. The cost over time graphs in 3a and 3b illustrate the native graphical outputs implemented in the package.

to the database, (b) how double-counting is managed or (c) caveats and avenues for further improvement). These fields include, for example taxonomic information on the focal invasive taxa or geographic information on the impacted area, which enable convenient filtering within R (using 'subset' for example) to refine the database into a subset relevant to specific research questions. To facilitate reproducibility of published analyses, we provide the function `getInvaCostVersion` to roll back the database to previous major releases (this function currently includes five releases: 1.0, 2.0, 2.1, 3.0 and 4.0).

The diversity of sources, cases and methods included in *InvaCost* will typically require users to make methodological choices about filters to apply to the database (e.g. reliable vs. unreliable sources, potential vs. observed costs) and about the costs to use (e.g. type of currency conversion factors, spatial scale of the study). We provide caveats and associated recommendations in Appendix B on these necessary choices, and everything is detailed step-by-step in the online tutorial of the *INVACOST* R package (<https://github.com/Farewe/invacost>).

In our example on the global costs of invasive invertebrates, we chose to filter out less reliable cost estimates and potential costs, to focus only on observed costs, which yielded a consolidated invertebrate subset of 1,762 cost estimates (Figure 1.1, see Appendix A.2 for code).

4 | OBJECTIVE 2—HOMOGENIZATION OF COSTS: EXPRESSION IN ANNUAL COSTS AND EXPANSION TO THEIR RELEVANT TIME PERIODS

Once the relevant filters have been applied to the database, extracting meaningful cost estimations from the resulting subset of cost records requires accounting for the fact that cost entries in the database have different temporal coverages: entries can be one-time costs, annual costs with repetitions over multiple years or total costs of impacts which spread over multiple years. Therefore, to be comparable, cost estimates must be homogenized with a two-step process. First, they must be expressed with the same temporal unit, where the most relevant choice is annual costs. This step is already accounted for in the database with fields containing 'cost_estimate_per_year' in their names. Second, once they have been homogenized on an annual basis, costs must be applied to their relevant time periods, that is, repeated for each year over which the monetary impact was reported. This step is performed with the `expandYearlyCosts` function. This function relies on the fields indicating the starting and ending years of the annual costs. For example, reference ID 1619 reports a cumulative eradication budget of € 550,000 for *Anoplophora glabripennis* in France between 2003 and 2008. A preliminary step, already included in the *InvaCost* database standardizes the costs into a common currency. That is, conversion from local currency to US Dollars (USD) using the exchange rate or, for a better consideration of the difference of price levels among countries, the Purchasing

Power Parity (PPP) and then inflation into 2017 USD (see Diagne, Catford, et al., 2020 or the online tutorial of the *INVACOST* R package for details). For the purposes of the standardization Diagne, Catford, et al. (2020) chose to first convert the costs from the local currency to USD and then use the appropriate inflation rate. It is important to note that the order of this process matters in determining the ultimate cost and that reversing it (i.e. inflating first in the local currency and then converting in USD) may lead to different numerical results. In the aforementioned case of ID 1619, this yields an annual cost of 2017 USD 136,437 for that period. The expansion step implemented in our package replicates this standard annual cost over each year of the impact period (2003–2008, Figure 1.2). The costs are not expanded for the database by default because the database is easier to distribute in the compact form and because expanding the costs requires decisions which should be assessed by the user, depending on the research question addressed.

The expansion step requires adequate information with respect to the beginning and ending years of cost impacts. However, information on the beginning and ending years was not directly provided in the literature sources of monetary costs for 23% of entries in the database (2,166 rows of data). Therefore, for each source for which it was not available, educated guesses were made on the probable starting and ending years, and included these guesses in the columns 'Probable_starting_year_adjusted' and 'Probable_ending_year_adjusted' columns (Diagne et al., 2020b). Because these columns are based on conservative assumptions (e.g. the ending year of costs does not extend beyond the publication year), they should limit over-estimation; hence, it is recommended using these columns (see discussion and Extended Data figure 6 in Diagne et al., 2021). Consequently, this process requires removing any cost entry for which the period impact could not be extracted from the source material. Once the homogenization step has been performed on all cost entries in the user's consolidated subset of the database, extractions and analyses can be performed to explore the patterns of costs of IAS. In our example, after expansion the data on invertebrate costs contained 4343 rows (Figure 1.2, code in Appendix A.3), each representing a single year of costs for a specific species/group.

5 | OBJECTIVE 3A—ESTIMATING THE CUMULATIVE AND AVERAGE REPORTED COSTS OF INVASIONS

The first method to analyse monetary costs of IAS consists of calculating the cumulative and average costs over time using cost estimates, as they appear in the filtered and homogenized material. These costs can be investigated on an annual basis, over the entire period covered by the database, or over a series of time intervals to account for the evolution of costs over time. All these options are performed simultaneously with the function `summarizeCosts`. First, this function calculates the sum of costs for each year of the time period requested by the user. That is by default, from 1960 (the first year with available conversion factors necessary to standardize

the costs into 2017 USD as previously mentioned using exchange rates or PPP and inflation rates available through the WorldBank website for example) to the last year of the dataset. Second, it computes the cumulative total costs and average annual costs over the requested period. Last, it computes cumulative and average annual costs for user-defined time intervals (by default, 10 years) in the requested period.

A typical usage of this function is to automatically derive cumulative or average costs for specific subsets of the database, such as for specific geographical areas, type of cost or on a per-species basis (see the detailed example on how to derive per-species cumulative cost estimates in the online tutorial <https://github.com/Farewe/invacost#example-on-many-subsets-all-taxaspecies-in-the-database>). In our example on the costs of invasive invertebrates, the function yielded a cumulative cost of 2017 USD 462.3 billion for the 1970–2020 time period, which corresponded to an annual cost of 2017 USD 9.1 billion per year (Figure 1.3a, code in Appendix A4).

6 | OBJECTIVE 3B—MODELLING THE TREND OF MONETARY COSTS OF INVASIVE ALIEN SPECIES OVER TIME

The second analytical method implemented in the package consists of modelling the long-term trend in economic impacts of IAS by fitting models of annual costs as a function of time. Such a modelling approach is appealing because it accounts for the dynamic nature of costs, and can reliably estimate the evolution of the reported costs of IAS over time, along with estimations of uncertainty. The package implements such a modelling procedure in the `modelCosts` function, which includes four different modelling techniques with specific parameterization resulting in a total of nine models fitted (Table 1). We chose these different statistical methods because they are complementary in their description of the trend of costs over time, and robust to the statistical issues of econometrics data: heteroskedasticity, temporal autocorrelation and outliers. We expect one or more will fulfil the general needs of most users (Table 1).

The fitting of these different models provides a description of the linear (with or without outlier correction) and non-linear patterns in the average trend of costs over time, as well as linear trends in the distribution of costs over time. Depending on their objectives, users can either choose one model that has characteristics fitting their question (Table 1), or compare the results of several models by analysing their convergence or divergence to describe the trend of costs over time (keeping in mind that this is affected by data characteristics). The output of the `modelCosts` function includes all the fitted models with their parameters, a table with predicted values per model over the temporal range chosen by the user, as well as diagnostic tools, such as the summary statistics specific to each model and the root mean square error between observations and predictions. The object also includes the formatted input data and parameters for reproducibility. Several parameters can be modified,

including the temporal range of data to use; transformations to apply to cost values beforehand (e.g. by default, costs are log10-transformed); weights or a threshold to reduce the impact of years with incomplete data. For example, there is a lag between the occurrence of a cost and its reporting and publication in the literature. This time-lag impacts the most recent years, which consequently constitute obvious outliers with the latest annual costs significantly lower than the rest of the data, a pattern pervasive to all subsets of *Invacost*. Users can account for this incompleteness of data either by investigating results of models robust to outliers (e.g. robust regressions), by defining an optional threshold to exclude the most recent years from calibration, or by applying optional weights to reduce the influence of incomplete years on model calibration (as illustrated in examples of the online tutorial). When users are satisfied with their models and want to export results to prepare a manuscript, we provide the function `prettySummary` to export the main statistics for each model into a conveniently formatted table.

In our example on invertebrates, we excluded from model calibration all cost values from 2015 onwards, because they constituted obvious outliers with a sudden drop of two orders of magnitude (Figure 1.3b, code in Appendix A.5). We confirmed these outliers by investigating the robust regressions which had set the weights of years above 2015 to zero (see also discussion in Supplementary Methods 1 in Diagne et al., 2021). We found significant increases in costs over time, with convergent predictions among modelling methods suggesting annual costs in 2014 of 2017 USD billion 26.4 to 62.0. Models MARS, GAM and quadratic regressions identified non-linear patterns in costs, pinpointing an acceleration in cost increase from the mid-1980s onwards. Quantile regressions for 0.1 and 0.9 quantiles had slightly distinct slopes suggesting an increase in between-year cost amplitude over time.

7 | CONCLUSION

In conclusion, we hope that the `INVACOST R` package will be beneficial to researchers and stakeholders, by providing the most up-to-date version of the global database on economic impacts of IAS directly in R—with a series of standard and robust methods to extract, analyse and compare cost data. This is the first R package to address global costs of IAS, but it follows the philosophy of similar software facilitating access to large datasets across disciplines (e.g. `letsR`, Vilela & Villalobos, 2015). A next step to promote access to a larger audience, beyond regular R users, will be to make all functions and the content of the package (including the database itself) accessible in a user-friendly interface, for example, through interactive tools like Shiny apps (<https://shiny.rstudio.com/>). The access facilitated by the `invacost` package has already fostered new research opportunities on the impacts of IAS. For example, the package has been used in all 19 articles of the NeoBiota special issue on the geographic distribution of monetary costs of biological invasions around the world, which ultimately aim to inform decision makers at relevant scales (Zenni et al., 2021).

TABLE 1 Models implemented in the `INVACOST R` package (function `modelCosts`), details of their implementation and summary of their characteristics to assist in model choice and interpretation

Model	Details	Important characteristics for model choice and interpretation
Ordinary Least Square regression (OLS)	While the estimation of coefficients is robust to heteroskedasticity and temporal autocorrelation, error estimations are not. Therefore, we implemented the covariance matrix with Heteroskedasticity and Autocorrelation Consistent estimators as described in (Andrews, 1991), using the <code>vcovHAC</code> function in R package <code>sandwich</code> . On the basis of these robust covariance matrices, the function derives 95% confidence intervals and estimates whether the regression coefficients significantly differ from zero with partial t test as described in Zeileis (2004), using the function <code>coefTest</code> from package <code>lmtest</code>	<ul style="list-style-type: none"> • Estimates average trend • Simple and well understood • Sensitive to outliers • Error bands: 95% confidence intervals
Robust regression	Because the econometrics data in <i>InvaCost</i> often include outliers, which may significantly bias the estimates of linear regression, particularly when the time period of costs is unclear, we also implemented MM-type regression (hereafter called 'robust regressions'). This type of regression model is based on iteratively reweighted least squares which makes them less sensitive to the effect of outliers than OLS regressions (Koller & Stahel, 2011; Yohai et al., 1991). This method estimates standard errors robust to heteroskedasticity and autocorrelation as described in Croux et al. (2003). We implemented the <code>lmrob</code> function from the <code>robustbase</code> R package	<ul style="list-style-type: none"> • Estimates average trend • Insensitive to outliers • Error bands: 95% confidence intervals
Multivariate Adaptive regression Splines (MARS)	The non-parametric MARS model automatically models nonlinearities, using Generalized Cross-Validation to avoid overfitting (Friedman, 1991; Hastie et al., 2009). We implemented MARS with the <code>earth</code> function of the <code>earth</code> R package, with the default parameters in order to follow Friedman's parameters, as described in Milborrow (2020a)—these default parameters minimize the risk of overfitting. The function provides prediction intervals which account for heteroskedasticity by fitting a linear model on the residuals, fitted with Iteratively Reweighting Least Squares (Milborrow, 2020b). Note, however, that the temporal range of <i>InvaCost</i> limits the number of data points such that we can only approximately model the variance, as explained in Milborrow (2020b). Therefore, there is greater uncertainty in the prediction intervals than in the predictions themselves	<ul style="list-style-type: none"> • Estimates average trend • Flexible and nonparametric • Fits nonlinearities with piecewise linear functions • The fitted trend is not smoothed. This characteristic can be used to approximate the years of shifts in the trend of costs • Sensitive to outliers • Error bands: 95% prediction intervals
Generalized Additive Models (GAM)	GAM models fit nonlinearities in the average trend of costs on the basis of nonparametric smooth functions. To account for heteroskedasticity, we used a location-scale method which consists in fitting two GAMs, one for the average trend and one for the standard deviation. We implemented the <code>gam</code> fitting function <code>s</code> therein (Wood et al., 2016). We used a simple Gaussian location scale family (function <code>gauss</code>) because, like MARS, the limited number of data points allows only for an approximate variance model	<ul style="list-style-type: none"> • Estimates average trend • Flexible and nonparametric • Fits nonlinearities with smooth functions • The fitted trend is smoothed • Sensitive to outliers • Error bands: 95% confidence intervals

TABLE 1 (Continued)

Model	Details	Important characteristics for model choice and interpretation
Quantile regressions	Contrary to the previous models which estimate the average trend in costs over time, quantile regressions estimate specific quantiles of the distribution of costs over time. To describe the evolution of the distribution of costs over time, we implemented three quantile regression models, to estimate the conditional median, 0.1 and 0.9 quantiles. We implemented the <code>qt</code> function from the <code>quantreg</code> R package with default parameters (Koenker, 2020)	<ul style="list-style-type: none"> • Estimates trend in specified quantiles of the distribution of costs (10%, 50%, 90%); provides insights in the trend of amplitude of costs over time • Sensitive to outliers • Error bands: 95% confidence intervals

Furthermore, the `invacost` package is an ideal tool to help achieve novel scientific assessments of invasion impacts, not merely the reported costs. Specifically, the continued improvement of the `invacost` package as well as the interoperable nature of the dynamic `InvaCost` database will enable: (a) the linkage of cost estimates to established indicators of alien impacts world-wide (e.g. GRIIS: Global Register of Introduced and Invasive Species, Pagad et al., 2018; SEICAT: Socio-Economic Impact Classification of Alien Species, Bacher et al., 2018) to ensure a standardized assessment of IAS impacts across regions and socio-economic sectors over time; (b) investigation of the relationships between invasion costs, ecological traits and phylogeny of IAS to better understand and predict impacts; (c) movement towards predictive approaches to support, evaluate and prioritize cost-efficient management strategies according to various scenarios of invasions in our changing global environment (Lenzner et al., 2019); and (d) opportunity to cross-analyse the costs of biological invasions with the other global drivers of change in biodiversity.

Hopefully, the `invacost` package will therefore be used as a powerful tool to complement assessments of the diversity of impacts of biological invasions, and better inform decision-makers from sub-national scales (e.g. Manfrini et al., 2021) to international assessments (e.g. the Intergovernmental Science-Policy Platform on Biodiversity & Ecosystem Services).

AUTHORS' CONTRIBUTIONS

B.L., A.-C.V., F.C. and C.D. designed the first version of the framework; A.M.K. complemented it with new methods; A.-C.V. and M.K. provided expertise on economic aspects of the package and associated analyses; B.L. and A.M.K. wrote the R package; B.L. wrote the first draft of the manuscript and all authors contributed significantly to its content.

ACKNOWLEDGEMENTS

We thank Anna Turbelin and Phillip J. Haubrock for their assistance in proofreading and beta-testing the `INVACOST` R package. We thank Nicolas Dubos for discussions on statistics. B.L., A.-C.V. and F.C. were funded by their salaries as French public servants. The post-doctoral

contract of C.D. was funded by the BiodivERsA-Belmont Forum Project 'Alien Scenarios' (BMBF/PT DLR 01LC1807C).

CONFLICT OF INTEREST

No conflict of interest.

PEER REVIEW

The peer review history for this article is available at <https://publons.com/publon/10.1111/2041-210X.13929>.

DATA AVAILABILITY STATEMENT

All data are freely available in the `INVACOST` R package, downloadable from the Comprehensive R Archive Network <https://cran.r-project.org/package=invacost>, and the R package code is open-source and available on github at <https://github.com/Farewe/invacost>. The version of the package used in this manuscript (v1.1-4) is stored on Zenodo (Leroy et al., 2022, 10.5281/zenodo.6653232).

ORCID

Boris Leroy  <https://orcid.org/0000-0002-7686-4302>

Andrew M. Kramer  <https://orcid.org/0000-0002-9031-6580>

Anne-Charlotte Vaissière  <https://orcid.org/0000-0001-8695-7046>

Melina Kourantidou  <https://orcid.org/0000-0001-9595-3354>

Franck Courchamp  <https://orcid.org/0000-0001-7605-4548>

Christophe Diagne  <https://orcid.org/0000-0002-6406-1270>

REFERENCES

- Andrews, D. W. K. (1991). Heteroskedasticity and autocorrelation consistent covariance matrix estimation. *Econometrica*, 59, 817. <https://doi.org/10.2307/2938229>
- Bacher, S., Blackburn, T. M., Essl, F., Genovesi, P., Heikkilä, J., Jeschke, J. M., Jones, G., Keller, R., Kenis, M., Kueffer, C., Martinou, A. F., Nentwig, W., Pergl, J., Pyšek, P., Rabitsch, W., Richardson, D. M., Roy, H. E., Saul, W.-C., Scalera, R., ... Kumschick, S. (2018). Socio-economic impact classification of alien taxa (SEICAT). *Methods in Ecology and Evolution*, 9(1), 159–168. <https://doi.org/10.1111/2041-210X.12844>
- Courchamp, F., Fournier, A., Bellard, C., Bertelsmeier, C., Bonnaud, E., Jeschke, J. M., & Russell, J. C. (2017). Invasion biology: Specific problems and possible solutions. *Trends in Ecology & Evolution*, 32(1), 13–22. <https://doi.org/10.1016/j.tree.2016.11.001>

- Croux, C., Dhaene, G., & Hoorelbeke, D. (2003). *Robust standard errors for robust estimators*. Katholieke Universiteit Leuven, (December), Working Paper.
- Diagne, C., Catford, J. A., Essl, F., Nuñez, M. A., & Courchamp, F. (2020). What are the economic costs of biological invasions? A complex topic requiring international and interdisciplinary expertise. *NeoBiota*, 63(November 2019), 25–37. <https://doi.org/10.3897/neobiota.63.55260>
- Diagne, C., Leroy, B., Gozlan, R. E., Vaissière, A. C., Assailly, C., Nuninger, L., Salles, J.-M., Bradshaw, C. J. A., & Courchamp, F. (2020a). InvaCost, a public database of the economic costs of biological invasions worldwide. *Scientific Data*, 7(1), 1–12. <https://doi.org/10.1038/s41597-020-00586-z>
- Diagne, C., Leroy, B., Gozlan, R. E., Vaissière, A. C., Assailly, C., Nuninger, L., Roiz, D., Jourdain, F., Jarić, I., & Courchamp, F. (2020b). *InvaCost: References and description of economic cost estimates associated with biological invasions worldwide*. <https://doi.org/10.6084/m9.figshare.12668570.v3>
- Diagne, C., Leroy, B., Vaissière, A. C., Gozlan, R. E., Roiz, D., Jarić, I., ... Courchamp, F. (2021). High and rising economic costs of biological invasions worldwide. *Nature*, 592(7855), 571–576. <https://doi.org/10.1038/s41586-021-03405-6>
- Friedman, J. H. (1991). Multivariate adaptive regression splines. *Annals of Statistics*, 19(1), 1–141. <https://doi.org/10.1214/aos/1176347963>
- Hastie, T., Tibshirani, R., & Friedman, J. (2009). *The elements of statistical learning - Data mining, inference, and prediction*. Springer.
- Haubrock, P. J., Turbelin, A. J., Cuthbert, R. N., Novoa, A., Taylor, N. G., Angulo, E., Ballesteros-Mejia, L., Bodey, T. W., Capinha, C., Diagne, C., Essl, F., Golivets, M., Kirichenko, N., Kourantidou, M., Leroy, B., Renault, D., Verbrugge, L., & Courchamp, F. (2021). Economic costs of invasive alien species across Europe. *NeoBiota*, 67, 153–190. <https://doi.org/10.3897/neobiota.67.58196>
- Koenker, R. (2020). *quantreg: Quantile regression*. Retrieved from <http://cran.r-project.org/package=quantreg>
- Koller, M., & Stahel, W. A. (2011). Sharpening Wald-type inference in robust regression for small samples. *Computational Statistics & Data Analysis*, 55(8), 2504–2515.
- Lenzner, B., Leclère, D., Franklin, O., Seebens, H., Roura-Pascual, N., Obersteiner, M., Dullinger, S., & Essl, F. (2019). A framework for global twenty-first century scenarios and models of biological invasions. *Bioscience*, 69(9), 697–710. <https://doi.org/10.1093/biosci/biz070>
- Leroy, B., Kramer, A. M., Vaissière, A.-C., Kourantidou, M., Courchamp, F., & Diagne, C. (2022). *Farewe/invacost: MEE-release (v1.1-4)*. Zenodo, <https://doi.org/10.5281/zenodo.6653232>
- Maechler, M., Rousseeuw, P., Croux, C., Todorov, V., Ruckstuhl, A., Salibian-Barrera, M., Verbeke, T., Koller, M., Conceicao, E. L. T., & di Palma, M. A. (2022). *ROBUSTBASE: Basic Robust Statistics R package version 0.95-0*. Retrieved from <http://CRAN.R-project.org/package=robustbase>
- Manfrini, E., Leroy, B., Diagne, C., Soubeyran, Y., Sarat, E., & Courchamp, F. (2021). *Les coûts économiques des invasions biologiques en France*. Synthèse à l'intention des décideurs. Retrieved from <https://hal.inrae.fr/hal-03349020>
- Michener, W. K., & Jones, M. B. (2012). Ecoinformatics: Supporting ecology as a data-intensive science. *Trends in Ecology & Evolution*, 27(2), 85–93. <https://doi.org/10.1016/j.tree.2011.11.016>
- Milborrow, S. (2020a). *Notes on the earth package*, 1–68. Retrieved from <http://www.milbo.org/doc/earth-notes.pdf>
- Milborrow, S. (2020b). *Variance models in earth*, 1–29. Retrieved from <http://www.milbo.org/doc/earth-varmod.pdf>
- Milborrow, S., Derived from mda:mars by Hastie T and Tibshirani R, & Uses Alan Miller's Fortran utilities with Thomas Lumley's leaps wrapper. (2019). *Earth: Multivariate adaptive regression splines*. Retrieved from <https://cran.r-project.org/package=earth>
- Pagad, S., Genovesi, P., Carnevali, L., Schigel, D., & McGeoch, M. A. (2018). Data descriptor: Introducing the global register of introduced and invasive species. *Scientific Data*, 5, 1–12. <https://doi.org/10.1038/sdata.2017.202>
- Vilela, B., & Villalobos, F. (2015). LetsR: A new R package for data handling and analysis in macroecology. *Methods in Ecology and Evolution*, 6(10), 1229–1234. <https://doi.org/10.1111/2041-210X.12401>
- Weissgerber, T. L., Milic, N. M., Winham, S. J., & Garovic, V. D. (2015). Beyond Bar and line graphs: Time for a new data presentation paradigm. *PLoS Biology*, 13(4), e1002128. <https://doi.org/10.1371/journal.pbio.1002128>
- Wickham, H. (2016). *ggplot2: Elegant graphics for data analysis*. Springer-Verlag.
- Wickham, H., François, R., Henry, L., & Müller, K. (2020). *dplyr: A grammar of data manipulation*. Retrieved from <https://cran.r-project.org/package=dplyr>
- Wickham, H., & Seidel, D. (2020). *SCALES: Scale functions for visualization*. R package version 1.1.1. Retrieved from <https://CRAN.R-project.org/package=scale>
- Wood, S., Pya, N., & Säfken, B. (2016). Smoothing parameter and model selection for general smooth models. *Journal of the American Statistical Association*, 111, 1548–1575.
- Yohai, V., Stahel, W. A., & Zamar, R. H. (1991). A procedure for robust estimation and inference in linear regression. In W. Stahel & S. Weisberg (Eds.), *Directions in robust statistics and diagnostics, Part II* (pp. 365–374). Springer. https://doi.org/10.1007/978-1-4612-4444-8_20
- Zeileis, A. (2004). Econometric computing with HC and HAC covariance matrix estimators. *Journal of Statistical Software*, 11(10), 1–17. <https://doi.org/10.18637/jss.v011.i10>
- Zeileis, A., & Hothorn, T. (2002). Diagnostic testing in regression relationships. *R News*, 2/3, 7–10. Retrieved from https://cran.r-project.org/doc/Rnews/Rnews_2002-3.pdf
- Zenni, R. D., Essl, F., García-Berthou, E., & McDermott, S. M. (2021). The economic costs of biological invasions around the world. *NeoBiota*, 67, 1–9. <https://doi.org/10.3897/neobiota.67.69971>

SUPPORTING INFORMATION

Additional supporting information can be found online in the Supporting Information section at the end of this article.

How to cite this article: Leroy, B., Kramer, A. M., Vaissière, A.-C., Kourantidou, M., Courchamp, F., & Diagne, C. (2022). Analysing economic costs of invasive alien species with the INVACOST R package. *Methods in Ecology and Evolution*, 00, 1–8. <https://doi.org/10.1111/2041-210X.13929>