
USF Patents

April 2010

Method for diagnosing selected adenocarcinomas

Siamak Tabibzadeh

Ravi Kothapalli

Follow this and additional works at: https://digitalcommons.usf.edu/usf_patents

Recommended Citation

Tabibzadeh, Siamak and Kothapalli, Ravi, "Method for diagnosing selected adenocarcinomas" (2010). *USF Patents*. 480.

https://digitalcommons.usf.edu/usf_patents/480

This Patent is brought to you for free and open access by Digital Commons @ University of South Florida. It has been accepted for inclusion in USF Patents by an authorized administrator of Digital Commons @ University of South Florida. For more information, please contact digitalcommons@usf.edu.



US007705131B2

(12) **United States Patent**
Tabibzadeh et al.(10) **Patent No.:** **US 7,705,131 B2**
(45) **Date of Patent:** **Apr. 27, 2010**(54) **METHOD FOR DIAGNOSING SELECTED ADENOCARCINOMAS**(75) Inventors: **Siamak Tabibzadeh**, Albertson, NY (US); **Ravi Kothapalli**, Wesley Chapel, FL (US)(73) Assignee: **University of South Florida**, Tampa, FL (US)

(*) Notice: Subject to any disclaimer, the term of this patent is extended or adjusted under 35 U.S.C. 154(b) by 412 days.

(21) Appl. No.: **11/654,074**(22) Filed: **Jan. 17, 2007**(65) **Prior Publication Data**

US 2007/0172870 A1 Jul. 26, 2007

Related U.S. Application Data

(60) Continuation of application No. 10/206,508, filed on Jul. 26, 2002, now abandoned, which is a division of application No. 09/526,833, filed on Mar. 16, 2000, now Pat. No. 6,683,156, which is a division of application No. 09/342,819, filed on Jun. 29, 1999, now Pat. No. 6,294,662, which is a continuation-in-part of application No. 08/919,421, filed on Aug. 27, 1997, now Pat. No. 5,916,751.

(60) Provisional application No. 60/025,800, filed on Aug. 27, 1996.

(51) **Int. Cl.**
C07K 16/00 (2006.01)(52) **U.S. Cl.** **530/387.1**(58) **Field of Classification Search** None
See application file for complete search history.(56) **References Cited****U.S. PATENT DOCUMENTS**

4,444,879	A	4/1984	Foster et al.
5,286,624	A	2/1994	Terashima et al.
5,395,825	A	3/1995	Feinberg et al.
5,420,016	A	5/1995	Boguslaski et al.
5,554,339	A	9/1996	Cozzette et al.
5,616,561	A	4/1997	Barcellos-Hoff
5,693,479	A	12/1997	Feinberg et al.
5,709,837	A	1/1998	Mori et al.
5,874,479	A	2/1999	Martin
5,916,751	A	6/1999	Tabibzadeh et al.
6,027,917	A *	2/2000	Celeste et al. 435/69.1
6,040,431	A	3/2000	Keck et al.
6,242,568	B1	6/2001	Barbas et al.
6,294,662	B1	9/2001	Tabibzadeh
6,428,966	B1	8/2002	Lee et al.
6,492,497	B1	12/2002	Thompson et al.
6,635,480	B1	10/2003	Lee et al.
6,649,588	B1	11/2003	Tabibzadeh et al.
6,677,432	B1	1/2004	Oppermann et al.
6,683,156	B1	1/2004	Tabibzadeh
6,747,004	B1	6/2004	Tabibzadeh
7,211,644	B1	5/2007	Tabibzadeh

2003/0022841	A1	1/2003	Lee et al.
2003/0032047	A1	2/2003	Tabibzadeh
2003/0064069	A1	4/2003	Thompson et al.
2003/0091566	A1	5/2003	Thompson et al.
2005/0276802	A1	12/2005	Adams et al.
2007/0172870	A1	7/2007	Tabibzadeh
2008/0200379	A1	8/2008	Tabibzadeh

FOREIGN PATENT DOCUMENTS

WO	WO 99/06443	2/1999
WO	WO 99/06444	2/1999
WO	WO 99/55902	11/1999
WO	WO 01/01134	1/2001

OTHER PUBLICATIONS

RNA Image Kit Product Brochure, 1993, pp. 1-21.

"DNA Sequencing by the Dideoxy Method" *Sequences* Ver. 2.0 *A New Genetically Engineered Enzyme for DNA Sequencing*, 1988-89, pp. 7-29, 7-35.

Liang, Pegn. et al. "Differential Display Using One-Base Anchored Oligo-dT Primers" *Nucleic Acids Research*, 1994, pp. 5763-5764, vol. 22, No. 25.

"Analysis of RNA by Northern and Slot Blot Hybridization" *Current Protocols in Molecular Biology*, 1993, pp. 4.9.1-4.9.14, Unit 4.9.

Kothapalli, Ravi et al. "Detection of ebaf, a Novel Human Gene of the Transforming Growth Factor B Superfamily" *Rapid Publication*, May 1997, pp. 2342-2350, vol. 99, No. 10.

Tabibzadeh, Siamak et al. "Distinct Tumor Specific Expression of TGF β 4 (ebaf), a Novel Human Gene of the TGF- β Superfamily" *Frontiers of Bioscience*, Jul. 1997, pp. 18-25, vol. 2.

Amersham Life Sciences Brochure, 1994, pp. 1-29.

Hillier, et al. GenBank Accession No. R37562, May 1995.

Frigerio, et al. GenBank Accession No. T25016, May 1997.

Tabibzadeh. et al. "Temporal and site-specific expression of transforming growth factor- β 4 in human endometrium" *Molecular Human Production*, 1998, pp. 595-602, vol. 4, No. 6.

Tabibzadeh. et al. "Dysregulated Expression of ebaf, a Novel Molecular Defect in the Endometria of Patients with Infertility" *Journal of Clinical Endocrinology and Metabolism*, 2000, pp. 2526-2536, vol. 85, No. 7.

"Radioamminoassay" <http://users.rcn.com/jkimball.ma.ultranet/Biology/Pages/R/Radioimmunoassay.html>, Mar. 2005, pp. 1-3.

U.S. Appl. No. 11/801,428, filed May 9, 2007, Tabibzadeh.

U.S. Appl. No. 11/801,427, filed May 9, 2007, Tabibzadeh.

Capecchi, M.R., "Altering the Genome by Homologous Recombination" *Science*, 1989, pp. 1288-1292, vol. 244, No. 4910.

(Continued)

Primary Examiner—Christopher H Yaen(74) *Attorney, Agent, or Firm*—Saliwanchik, Lloyd & Saliwanchik(57) **ABSTRACT**

A method for the early diagnosing of selected adenocarcinomas in a human comprising the steps of removing a bodily sample from the human, and assaying the bodily sample for elevated expression of a specific gene. The gene being assayed for in the bodily sample is the TGF β -4 gene (hereinafter referred to as the endometrial bleeding associated factor (ebaf) gene. The bodily sample can be tissue from a specific organ in the body, or a blood sample. Increased levels of ebaf in the sample relative to basal levels may be indicative of a mucinous adenocarcinoma of the colon or ovaries, or an adenocarcinoma of the testis.

6 Claims, 3 Drawing Sheets

OTHER PUBLICATIONS

- Davies, N.P., et al. "Targeted alterations in yeast artificial chromosomes for inter-species gene transfer" *Nucleic Acids Research*, 1992, pp. 2693-2698, vol. 20, No. 11.
- Huxley, C., et al. "The Human HPRT Gene on a Yeast Artificial Chromosome is Functional When Transferred to Mouse Cells by Cell Fusion" *Genomics*, 1991, pp. 742-750, vol. 9.
- Jakobovits, A., et al., "Germ-line transmission and expression of a human-derived yeast artificial chromosome" *Nature*, Mar. 18, 1993, pp. 255-261, vol. 362.
- Johnson, S. and Bird, R.E., "Construction of Single-Chain Fv Derivatives of Monoclonal Antibodies and Their Production in *Escherichia coli*" *Methods in Enzymology*, 1991, pp. 88-99, vol. 203, JJ Langone ed.; Academic Press, New York, NY.
- Lamb, B.T., et al., "Introduction and expression of the 400 kilobase precursor amyloid protein gene in transgenic mice" *Nature Genetics*, Sep. 1993, pp. 22-29, vol. 5.
- Pearson, B.E. and Choi, T.K., "Expression of the human β -amyloid precursor protein gene from a yeast artificial chromosome in transgenic mice" *Proceedings of the National Academy of Sciences USA*, Nov. 1993, pp. 10578-10582, vol. 90.
- Rothstein, R., "Targeting, Disruption, Replacement, and Allele Rescue: Integrative DNA Transformation in Yeast" *Methods in Enzymology* 1991, pp. 281-301, vol. 194, Chapter 19, Guide to Yeast Genetics and Molecular Biology, eds. C. Guthrie and G. Fink, Academic Press, Inc.
- Schedl, A., et al., "A yeast artificial chromosome covering the tyrosinase gene confers copy number-dependent expression in transgenic mice" *Nature*, Mar. 18, 1993, pp. 258-261, vol. 362.
- Strauss, W.M., et al., "Germ Line Transmission of a Yeast Artificial Chromosome Spanning the Murine α_1 (I) Collagen Locus" *Science*, Mar. 26, 1993, pp. 1904-1907, vol. 259, No. 5103.
- Gruidl, M., et al., "The progressive rise in the expression of α crystalline B chain in human endometrium is initiated during the implantation window: modulation of gene expression by steroid hormones" *Molecular Human Reproduction*, 1997, pp. 333-342, vol. 3, No. 4.
- Lessey, B.A., et al., "Integrin Adhesion Molecules in the Human Endometrium, Correlation with the Normal and Abnormal Menstrual Cycle" *The Journal of Clinical Investigation*, Jul. 1992, pp. 188-195, Vol. 90.
- Kumar, S., et al., "Progesterone Induces Calcitonin Gene Expression in Human Endometrium within the Putative Window of Implantation" *Journal of Clinical Endocrinology and Metabolism*, 1998, pp. 4443-4450, vol. 83, No. 12.
- Molloy, S.S., et al., "Bi-cycling the furin pathway: from TGN localization to pathogen activation and embryogenesis" *Trends in Cell Biology*, Jan. 1999, pp. 28-35, vol. 9.
- Leonard, S.N., et al., "Transforming growth factor beta 1 expression in the endometrium of the mare during placentation" *Molecular Reproduction and Development*, 1995, pp. 131-140, vol. 42.
- Wieczorek, Z., et al., "The immunomodulatory diversity of the proteins of the transforming growth B (TGFB) family" *International Journal of Peptide and Protein Research*, Jul. 1995, pp. 113-118, vol. 46.
- Meno, Chikara, et al., "Left-right asymmetric expression of the TGFB-family member *lefty* in mouse embryos" *Nature*, May 9, 1996, vol. 381.
- Burt, D.W., et al "Multiple growth factor mRNAs are expressed in chicken adipocyte precursor cells" *Biochemical and Biophysical Research Communications*, Sep. 30, 1992, pp. 1298-1305, vol. 187, No. 3.
- Bowie, James U., et al., "Deciphering the Message in Protein Sequences: Tolerance to amino acid substitution" *Science*, Mar. 16, 1990, pp. 1306-1310, vol. 247.
- Bassi et al., Accession Nos. AF081508; AF081510; AF081509, Jun. 23, 2006, p. 1.
- Meno, et al., "Left-right asymmetric expression of the TFG β -family member *lefty* in mouse embryos" *Nature* 1996, reference of record, 151-155.
- Sporn, M.B., et al., "TFG β : problems and prospects", *Cell Regulation, The American Society of Cell Biology*, Nov. 1990, pp. 875-882.
- Roberts, A.B., et al., "Transforming growth factor β : multifunctional regulator of differentiation and development", *Phil. Trans. R. Soc. Lond. B*, 1990, pp. 145-154, vol. 327.
- Burt, David W., et al., Correction: A New Interpretation of a Chicken Transforming Growth Factor— β 4 Complementary DNA, *Molecular Endocrinology*, pp. 989-992, vol. 6, No. 6, Jun. 1992.
- Flanders, Kathleen C., et al., "Antibodies to peptide determinants in Transforming Growth Factor B and their Applications" *Biochemistry* 1988, pp. 739-746, vol. 27.
- Postlethwaite, A.E., et al., "Identification of a chemotactic Epitope in Human Transferring Growth Factor- β 1 Spanning Amino Acid Residues 368-374", *Journal of Cellular Physiology*, 1995, pp. 587-592, vol. 164.
- Teicher, B.A., et al., "Transforming growth factor - α in vivo resistance", *Cancer Chemther Pharmacol* 1996, pp. 601-609, vol. 37.
- Newcom, Samuel, R., et al., "Production of Monoclonal Antibodies That Detect Hodgkin's High Molecular Weight Transforming Growth Factor- β " *Blood*, Jun. 15, 1990, pp. 2434-2437, vol. 75, No. 12.
- Dillner, J., et al., "Antibodies Against a Synthetic Peptide (Gly-Ala)" *PNAS*, Aug. 1984, pp. 4652-4656, vol. 18.
- Oosterlynck, D.J., et al., "Transforming growth factor B activity is increased in peritoneal fluid from women with endometriosis" Feb. 1994, pp. 287-292, vol. 83, No. 2.
- Ayala, A., et al., "The release of transforming growth factor B following hemorrhage: its role as a mediator for host immunosuppression" *Immunology*, 1993, pp. 479-484, vol. 79.
- Hoefer, M., et al., Anti (transforming growth factor B) antibodies with predefined specificity inhibit metastasis of highly tumorigenic human xenotransplants in nu/nu mice 1995, pp. 302-308, vol. 41.

* cited by examiner

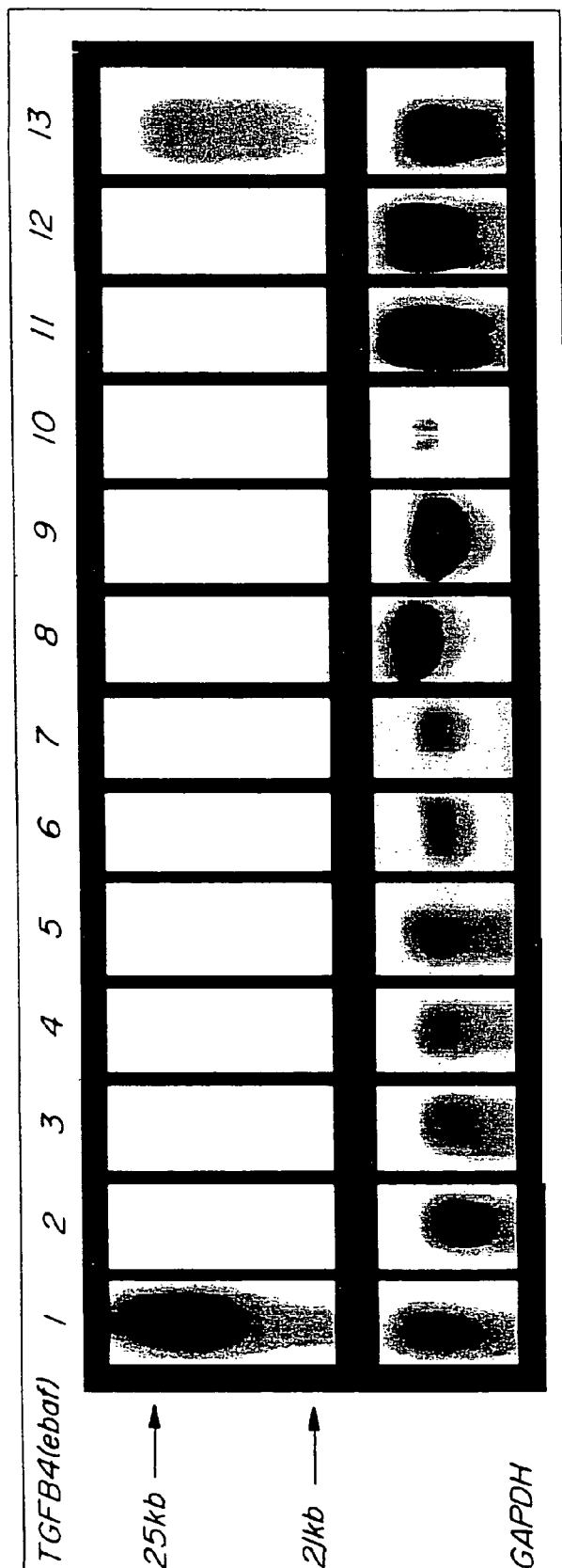


Fig-1

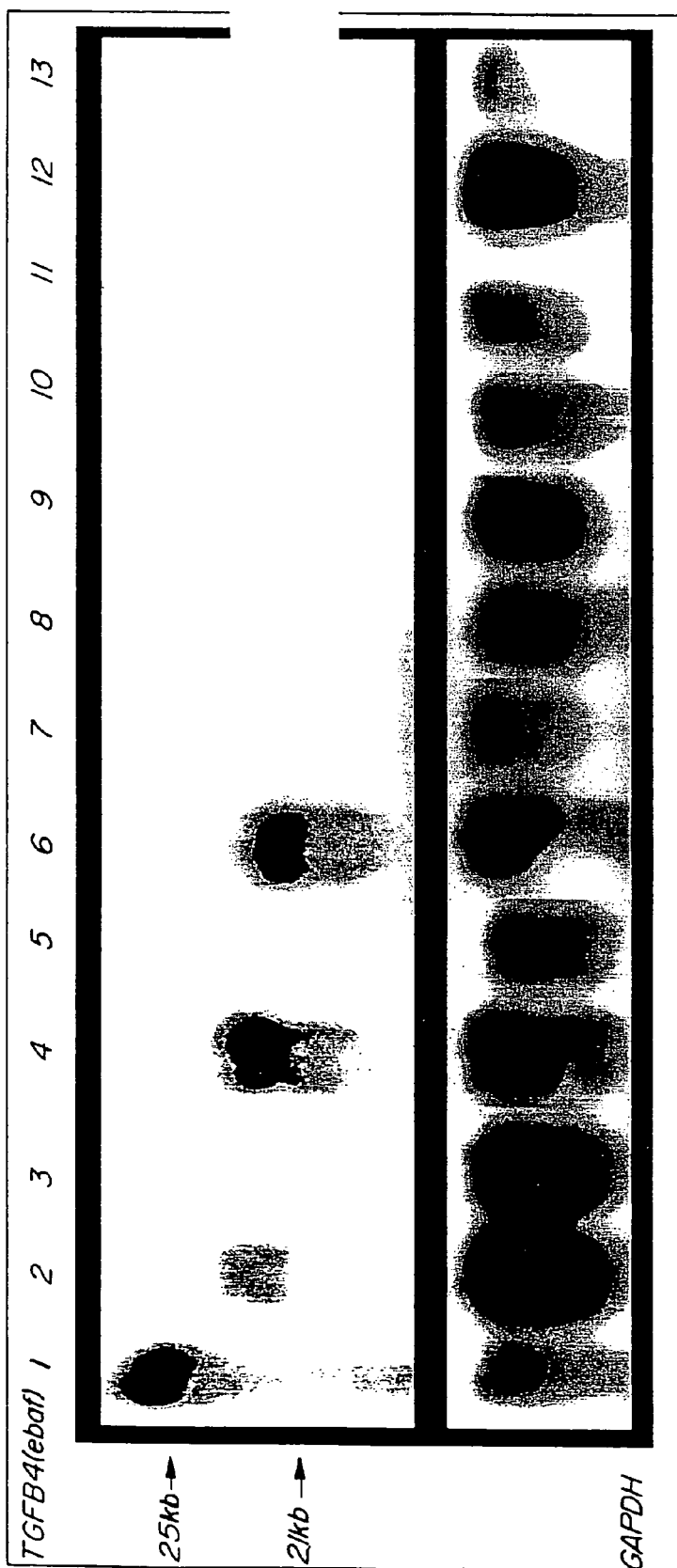


Fig-2

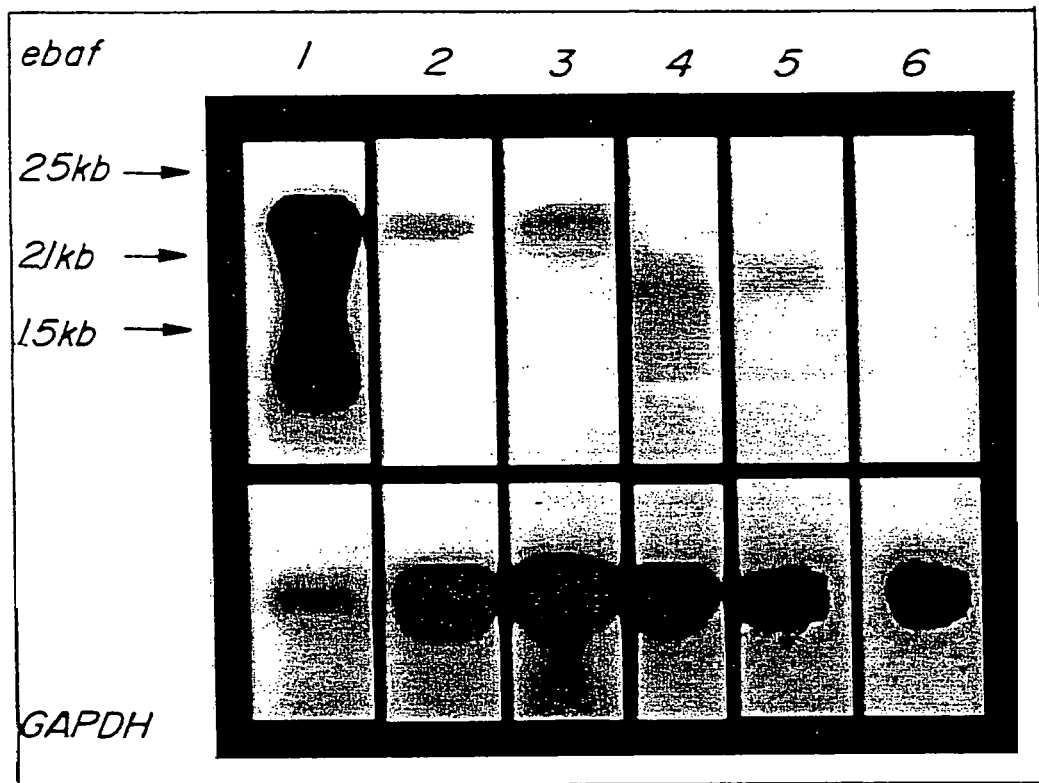


Fig-3

1

METHOD FOR DIAGNOSING SELECTED ADENOCARCINOMAS

CROSS REFERENCE

The subject application is a continuation of U.S. patent application Ser. No. 10/206,508, filed Jul. 26, 2002, which is a divisional application of U.S. patent application Ser. No. 09/526,833, filed Mar. 16, 2000, now U.S. Pat. No. 6,683,156, which is a divisional of U.S. patent application Ser. No. 09/342,819, filed Jun. 29, 1999, now U.S. Pat. No. 6,294,662, which is a continuation-in-part of U.S. patent application Ser. No. 08/919,421, filed Aug. 27, 1997, now U.S. Pat. No. 5,916,751, which claims priority to U.S. Provisional Patent Application Ser. No. 60/025,800, filed Aug. 27, 1996, all of which are incorporated herein by reference.

GOVERNMENT SUPPORT

This invention was made with Government support under Grant Number CA46866 awarded by the National Institutes of Health (NIH). The Government has certain rights in the invention.

FIELD OF INVENTION

A method for diagnosis of human bodily conditions, and more particularly, a method for diagnosing selected mucinous adenocarcinoma of the colon, or ovaries, or an adenocarcinoma of the testis.

BACKGROUND OF INVENTION

Early diagnosis of particular pathological conditions of the human body can provide patients with adequate time to make well informed decisions regarding the treatment of their pathological condition, as well as prepare for the potential incapacitation of the patient. One such pathological condition is colon cancer. The American Chemical Society has reported that colon cancer is the second most common cause of cancer in the United States (Fleischer, D. et al. *Detection and Survival of Colorectal Cancer* (1989) JAMA 261(4):580. It has been estimated that approximately 145,000 new cases of colon cancer are reported yearly in the United States, and the overall mortality rate of this pathological condition is almost 60%. Moreover, a diagnosis of colon cancer has been estimated to shorten that patient's life by six to seven years (Id). Consequently, early detection of this pathological condition offers a patient the best hope of survival.

Approximately three principal screening tests for the early detection of colon cancer or precancerous polyps are presently available to physicians. One such test is the Fecal Occult Blood Test (FOBT). Basically, this test is designed to test whether blood is present in the fecal material of the patient. Hence, this effectiveness of this test is dependent upon the assumptions that blood in the fecal material is indicative of the presence of colonic neoplasms, and that these neoplasms will bleed in sufficient quantity in order to cause a positive FOBT result.

However, it is because of these necessary assumptions that applicants believe the FOBT contains significant shortcomings as a screening tool for colon cancer. For instance, it has been shown that not all colonic neoplasms bleed sufficiently into the colon. As a result, this test is readily capable of giving false negative results.

In addition, there are other factors which could result in a false positive result for this test. For example, it has been

2

found that aspirin and other non-inflammatory analgesics have been known to cause irritation in the stomach and increased gastro-intestinal tract blood loss, thereby producing in a false positive result. The patient's ingestion of rare beef and fruits and vegetables which contain catalases and peroxidases within 24 hours of administering the test may also cause a false positive result.

Another screening test that is available is the Carcinoembryonic Antigen (CEA) test. CEA is a glycoprotein that may be produced by cancerous lesions in the colon. This test is desired to measure the concentration of CEA in the patient's blood to determine if it is elevated relative to normal levels. It is believed that an elevated level is due directly to the presence of colon cancer in the patient. Hence it was hoped CEA would act as a genetic marker for colon cancer. Immunological techniques are usually used to measure CEA levels in the blood.

However, soon after this test became available to health professionals, it was observed that this test was simply too insensitive to recognize numerous types of colon cancers. As a result, the CEA test was relegated to the detection of a recurrence of colon cancer after surgery is performed to remove cancerous lesions from the colon. Even in this role though, it has met with only limited success. In 1993, a study on the effectiveness of CEA testing in 1017 patients was published in the Journal of the American Medical Association. The study showed that 417 patients out of the original group developed recurrent colon cancer, and 247 of these had elevated CEA levels prior to diagnosis of recurrence. However, of the remaining 600 patients, 98 also had elevated CEA levels. Hence the rate of false negatives for the test was 41%, and the rate of false-positive results was 16%. (Moertel, C., et al. *An Evaluation of the Carcinoembryonic Antigen (CEA) Test for monitoring Patients with resected Colon Cancer*. JAMA 270(8):954 (1993).

In concluding their study, the authors questioned the efficacy of the CEA Test. In support of this conclusion, they explained that, based on their data, the maximum anticipated gain from CEA monitoring would probably be a small number of lives saved (less than 1% of patients monitored) after resection and hepatic metastasis. In addition, the authors specifically stated, "Since the most defensible objective of CEA monitoring is detection of potentially resectable hepatic metastasis, it would also seem appropriate to consider alternative strategies that might fulfill this objective in a more sensitive, specific, and cost-effective manner." (Id)

Another method used to screen for colon cancer is to have the patient undergo a periodic sigmoidoscopic examination. The use of this screening test in a particular patient is dependent upon the age of the patient and whether he or she is a member of a high-risk population. Research on this screening technique has concluded this method to be the best known screening method for colon cancer presently available (see Selby, J. *Sigmoidoscopy in the Periodic Health Examination of Asymptomatic Adults* JAMA (1989) 261(4):595)

However, researchers have also acknowledged that this screening method contains inherent limitations. For example, the high cost for the specialized instruments required to perform this screening test, and the special training required in the operation of the instruments in order to perform the procedure safely are acknowledged. Moreover, general patient discomfort while undergoing this screening is believed to be one of the obstacles in providing mass screening for the general population. Finally, health professionals acknowledge that there is a very slight risk of perforating a patient's

colon while undergoing the procedure. Consequently, applicants believe a simple, cost effective screening test for colon cancer is needed.

Another type of pathological condition, present exclusively in women, is ovarian cancer. Ovarian cancer comes from cells of the ovary that grow and divide uncontrollably. Applicants believe that statistical information on ovarian cancer indicates that approximately one woman out of every fifty-five (approximately 1.8%) will develop ovarian cancer some time in her lifetime, and it was believed that in 1996, approximately 26,000 women would be diagnosed with ovarian cancer and approximately 14,500 women would die of the disease. Moreover, 85 to 90% of women diagnosed with the condition before it spreads from the ovary are cured. However, there is only a 20 to 25% chance of living after diagnosis, if the diagnosis is made after the disease has spread beyond the ovary.

Presently, there are methods available to diagnose ovarian cancer, but such methods have inherent limitations. One such method is assaying the patient's blood for elevated levels of Cancer Antigen 125 (CA 125). It has been determined that eight out of ten women with advanced ovarian cancer, and in one out of two women with cancer localized in the ovary will have such elevated levels. However, endometriosis, pelvic inflammatory disease of the tubes and ovaries, uterine fibroids, and pregnancy can also elevate levels of CA 125 in the blood, resulting in false positives.

Another method involves screening the ovaries for a growth, surgically removing the growth, and then performing a biopsy on the growth. Screening can occur with a pelvic examination, during which the physician feels for growths on the ovary, or with special types of x-rays. If such a growth is discovered, it must be surgically removed, so that a biopsy can be performed. Another such screening method is ultrasound examination of the ovaries. However, like the pelvic examination, this method provides no definitive answer regarding the presence of cancer in the ovaries.

Another pathological condition for which early diagnosis would benefit the patient is testicular cancer. With this type of cancer, the patient develops a growth within the body of the testicle. The physician must then determine whether the growth is cancerous using presently available diagnostic procedures.

One such procedure is to perform a biopsy on the growth through the scrotum. However, such a procedure presents a problem to the patient in that it could contaminate the scrotum, which could then be a site for the development of cancer. Moreover such a biopsy could disturb the pattern of nodal metastases, and make points for subsequent surgery difficult to predict.

Another such procedure is inguinal orchiectomy, which is done through an incision made above the inguinal ligament. The testicle is then brought up through the inguinal canal and examined visually. However this procedure has limitations in that it is done surgically, like the biopsy, and is a qualitative inspection of the testes. Consequently, a false positive or false negative can result from this procedure.

Another method available for diagnosing testicular cancer is assaying the patient's blood for elevated levels of Human Chorionic Gonadotrophin, beta subunit (Beta HCG). However, this method contains inherent limitations in that it has

been determined that low testosterone states, and marijuana use by the patient can produce false positives.

SUMMARY OF THE INVENTION

There is provided, in accordance with the present invention, a method for the early diagnosing of selected adenocarcinomas in a human. Applicants believe that this method is accurate, dependable, inexpensive, and does not possess the shortcomings or the prior art as explained above. In particular, the present invention describes a method for diagnosing an adenocarcinoma in a human comprising the steps of removing a bodily sample from the human, and assaying the bodily sample for elevated expression of a specific gene. The bodily sample can be either tissue from a particular organ, such as the colon or the ovary, or a sample of blood. For purposes of this application, "expression" means either the transcription of the specific gene into at least one mRNA transcript, or the translation of at least one mRNA into a protein.

The specific gene referred to above is the TGFB-4 gene (hereinafter referred to as the endometrial bleeding associated factor (ebaf) gene). Applicants recently discovered this gene in humans (please see Ravi Kothapalli, Ibrahim Buyuk-sal, Shi-Qi Wu, Nasser Chegini, Siamak Tabibzadeh: *Detection of ebaf, a novel human gene of the TGF- β superfamily; association of gene expression with endometrial bleeding* J. Clin. Invest. 1997, 99:2342-2350, which is hereby incorporated by reference herein). The cDNA sequence of the ebaf gene is set forth in SEQ. ID NO. 1.

Applicants have also discovered that, due to alternative splicing during the transcription of the gene into mRNA, three different mRNA transcripts can result from the transcription of the ebaf gene. One of the transcripts is 1.5 kb in size, one is 2.1 kb, and the remaining is 2.5 kb. Consequently, such processing will produce three isoforms upon translation of the transcripts. Regardless, elevated expression of the ebaf gene can be determined from elevated levels of any transcript or any isoform. Hence, one object of the present invention is to provide an accurate, reliable method for the diagnosis and detection of an adenocarcinoma of the testis, or a mucinous adenocarcinoma of the colon in a human male.

Another object of the present invention is to provide an accurate, reliable method for the diagnosis and detection of a mucinous adenocarcinoma of the ovaries, or a mucinous adenocarcinoma of the colon in a human female.

Yet another object of the present invention is to provide a method of diagnosing and detecting a mucinous adenocarcinoma of the ovaries or colon in a female human, or a mucinous adenocarcinoma of the colon or an adenocarcinoma of the testis in a human male that is selective for such adenocarcinomas. While the ebaf gene disclosed in the present is expressed in the adenocarcinomas mentioned above, it is not expressed in other types of adenocarcinomas, such as Squamous Cell Carcinoma (SCC), lymphoma or adenocarcinoma. Consequently, the present invention is very selective for the type of adenocarcinomas it is designed to detect. Moreover, in normal tissues, the ebaf gene is expressed only the ovary, pancreas, rectum, endometrium immediately prior to and during the menstrual cycle, and weakly in the colon and the kidney. Consequently, the number of false positive resulting from the use of the present invention is limited.

Yet still another object of the present invention is to provide a blood test for adenocarcinomas of the testis, and mucinous adenocarcinomas of the colon and ovaries. As stated above, only 6 organs are presently known to express the ebaf gene constitutively. Applicants believe this constitutive expression results in a basal level of expression of the ebaf gene in the

blood. However, if increased levels of expression of the eba gene are detected in the blood of a human relative to the basal level, they indicate the presence of an adenocarcinoma of the testis, or a mucinous adenocarcinoma of the colon or ovary. For example, if increased levels of expression of the eba gene are detected in a blood sample from a human male, such levels are indicative of an adenocarcinoma of the testis or a mucinous adenocarcinoma of the colon. If increased levels of expression of the eba gene are detected in a sample of blood taken from a female after her period, then such increased levels may be indicative of the presence of a mucinous adenocarcinoma in the colon or ovaries, provided the female does not suffer from abnormal uterine bleeding.

DESCRIPTION OF FIGURES

FIG. 1 is a Northern blot analysis of eba mRNA in normal tissues;

FIG. 2 is a Northern blot analysis of eba mRNA in colonic adenocarcinomas; and

FIG. 3 is a Northern blot analysis of eba mRNA in testicular cancers.

DESCRIPTION OF EXAMPLES OF THE INVENTION

In the description of examples of the invention, applicants principally used the Northern Blot method to determine the expression of the eba gene in a particular bodily samples made up of tissues from different organs. However, as stated above, any known method capable of detecting whether levels of expression of the eba gene in a bodily sample are elevated relative to levels observed in a normal bodily sample of the same type is an acceptable method of practicing the invention. Such assays include, but are not limited to:

- collecting proteins from a bodily sample and performing an immunoassay on the proteins using monoclonal or polyclonal antibodies raised against the isoforms produced from the expression of the eba gene;
- collecting DNA from a bodily sample and performing a southern blot on the DNA using a probe that is complementary to all or a portion of the eba cDNA;
- collecting RNA from a bodily sample, reverse transcribing the RNA into DNA (RT), amplifying the DNA (via PCR), and then performing a southern blot on the DNA using a probe that is complementary to all or a portion of the eba cDNA.

I. Northern Blotting

The RNA was extracted from samples by using acid guanidinium thiocyanate-phenol-chloroform extraction method as described in Chomczynski, P. and N. Sacchi. Single-step method of RNA isolation by acid guanidinium thiocyanate-phenol-chloroform extraction. *Anal. Biochem.* 1987, 162:156-159 which is hereby incorporated by reference herein. The tissues samples were homogenized in "RNA STAT-60" reagent. Each 50-100 mg of tissue was homogenized in 1 ml of "RNA STAT-60" reagent in a glass or Teflon Dounce homogenizer. Each homogenate was stored for 5 minutes at room temperature to permit the complete dissociation of nucleoprotein complexes. Then, 0.2 ml of chloroform was added for each ml of "RNA STAT-60" reagent used. Each sample was covered and shaken vigorously for 15 seconds and allowed to stand at room temperature for 2-3 minutes. Following centrifugation at 12,000×g for 15 minutes at 4° C., each homogenate was separated into a lower phenol/chloroform phase and an upper aqueous phase. RNA in the

upper aqueous phase was transferred to fresh tubes and mixed with isopropanol to precipitate the total RNA. After centrifugation and drying, the precipitated RNA was dissolved in diethylpyrocarbonate (DEPC)-treated water by vigorous pipetting and by a gentle heating at 55-60° C. The amount of RNA in each sample was determined spectro-photometrically and its quality was evaluated by the integrity of ribosomal RNA by electrophoresis of 20 mg of total RNA in 1% formaldehyde-agarose gel in the presence of ethidium bromide. Northern blotting was then performed. Briefly, 20 mg of total RNA of each sample was denatured at 65° C. in an RNA loading buffer, electrophoresed in 1% agarose containing 2.2 M formaldehyde gel, and blotted onto a "HYBOND" nylon membrane using a positive pressure transfer apparatus (Posiblot, Stratagene, La Jolla, Calif.). The RNA was fixed to the membrane by UV cross-linking. Using a "PRIME-A-GENE" kit, cDNA was labeled with [³²P] to a high specific activity, and purified by Nick columns. Membranes were prehybridized in 50% formamide, 10×Denhardt's solution, 4% saline sodium citrate (SSC), 0.05 M sodium pyrophosphate and 0.1 mg/ml of denatured Hering sperm DNA at 42° C. for 2-4 hr and hybridized for 16 hours at 42° C. with 10⁶ cpm/ml of heat-denatured probe in the same buffer containing 10% dextran sulfate. Then, membranes were sequentially washed three times in 4×SSC, one time in 0.5×SSC and then one time in 0.1×SSC. All washes contained 0.1% sodium dodecyl sulfate (SDS), and were done at 65° C. for 20 minutes each. The membranes were subjected to autoradiography at -70° C. with intensifying screens. The same blot was stripped and reprobed for GAPDH. To reprobe a blot, the probe was stripped from the membrane in 75% formamide, 0.1× saline sodium phosphate ETDA (SSPE), and 0.2% SDS at 50° C. for one hour.

FIG. 1 shows the Northern Blot of eba mRNA in normal tissues. In FIG. 1, 20 mg total RNA from each tissue (lane 1: normal menstrual endometrium serving as the positive control and normal tissues (lane 2: spleen, lane 3: lymph node, lanes 4 and 5: stomach, lane 6: lung, lane 8: liver, lane 9 and 10: ovary, lane 11: rectum, lane 12: testis, lane 13: pancreas) was subjected to the Northern blot analysis using the entire eba cDNA (SEQ. ID No. 1) as the probe. As shown, a band of eba mRNA in the size of 2.5 kilobase (kb) is detected in the endometrium. A weak 2.1 kb eba mRNA is detected in the ovary, rectum, and testis. In the pancreas, both the 2.1 and 2.5 kb eba mRNA is detected. The eba gene was not expressed in the breast, stomach, small bowel, colon, kidney, lung, fallopian tube, spleen and lymph node. Table 1 displays these results in tabular form:

TABLE 1

Expression of eba mRNA in Normal Tissues

Tissue	Number of tissues examined	Northern blot finding
Breast	5	—
Stomach	3	—
Small Bowel	1	—
Colon*	11	2.1 kb (weak)
Rectum	2	2.1 kb
Liver	6	—
Pancreas	2	2.1 and 2.5 kb
Kidney	1	2.5 (weak)
Lung	1	—
Fallopian Tube	1	—
Ovary	7	—
Ovary	1	2.1 kb
Testis	2	2.1 kb

TABLE 1-continued

Expression of ebaf mRNA in Normal Tissues		
Tissue	Number of tissues examined	Northern blot finding
Spleen	1	—
Lymph node	1	—

—: signal not detected

*of eleven samples tested, only one showed a strong signal. The remaining were not apparent.

The expression of the ebaf gene was then examined in cancers derived from cells of different lineages. In eleven adenocarcinomas of colon, adjacent normal colonic tissues, non-involved by the tumor were available for the study. The RNAs from the neoplastic and surrounding normal tissues were both subjected to the Northern blot analysis for the detection of the ebaf mRNA.

Applicants also examined a host of other types of cancer for the expression of the ebaf gene. Using the same Northern Blot procedure stated in each of the previous examples, applicants collected the following data regarding the expression of the ebaf gene in non-mucinous adenocarcinomas:

TABLE 2

Expression of ebaf mRNA in the Non-Mucinous Adenocarcinomas		
Tumor Type	Number of tumors examined	Northern blot finding
Serous Cystadenocarcinoma of ovary	2	2.1
Serous Cystadenocarcinoma of ovary	2	2.5
Serous Cystadenocarcinoma of ovary	5	—
Adenocarcinoma of the colon metastatic to ovary	1	—
Endometrioid adenocarcinoma of ovary	1	—
Non-mucinous adenocarcinoma of colon	7	—
Non-mucinous adenocarcinoma of uterine cervix	1	—
Non-mucinous adenocarcinoma of the stomach	3	—
Hepatocellular carcinoma	3	—
Renal Cell Carcinoma	3	—
Liver metastasis; Consistent with colonic primary*	6	—
Adenocarcinoma of lung	7	—
Adenocarcinoma of breast*	5	—

*Normal tissues around the tumors were available for the Northern blot analysis and did not exhibit ebaf mRNA

—: Signal not detected

Squamous cell carcinomas and non-epithelial tumors for the expression were also examined for expression of the ebaf gene. The same Northern Blot protocol as explained above was also used for these tumors. The results of these tests are shown in Tables 3 and 4, respectively.

TABLE 3

Expression of ebaf mRNA in Squamous Cell Carcinomas		
Tumor Type	Number of tumors examined	Northern blot finding
SCC of the Larynx	1	—
SCC of the Lung	4	—
SCC of the Uterine cervix	1	—

—: Signal not detected

TABLE 4

Expression of ebaf mRNA in Non-epithelial Tumors		
Tumor Type	Number of tumors examined	Northern blot finding
Leiomyosarcoma, gastric	1	—
Leiomyosarcoma, colon	1	—
Leiomyosarcoma, pelvic	1	—
Chondrosarcoma, thoracic wall	1	—
Osteosarcoma, metastatic to the lung	3	—
Liposarcoma, retroperitoneum	1	—
Synovial sarcoma, metastatic to the chest wall	1	—
Synovial sarcoma, parotid	1	—
Synovial sarcoma, Leg	1	—
Angiosarcoma, mediastinal	1	—
Lymphoma	1	—
Lymphoma, B cell type	1	—
Lymphoma, B cell spleen	1	—
Lymphoma, T cell, groin	1	—
Lymphoma, T cell, angiocentric, hip	1	—
Hodgkin's Disease, mixed cell type, lymph node	1	—
Melanoma	5	—

—: Signal not detected

Example 1

Detection of Mucinous Adenocarcinomas of the Colon

In FIG. 2, 20 mg total RNA from a normal late secretory endometrium which served as the positive control (lane 1) as well as mucinous adenocarcinomas of colon (lanes 2, 4, 6), non-mucinous adenocarcinomas of colon (lanes 8, 10, and 12) and adjacent normal colon (lanes 3, 5, 7, 9, 11 and 13) was subjected to the Northern blot analysis using the entire placental-derived ebaf cDNA as the probe (upper panel). Here, the expression of a 2.1 kb ebaf mRNA was detected in seven of the eleven cases of adenocarcinomas of the colon. The histological evaluation of the positive cases revealed them to have a mucinous differentiation.

Example 2

Detection of Adenocarcinomas of the Testis

FIG. 3 is a Northern blot displaying the results of an examination of five cases of testicular cancer for the expression of ebaf gene. 20 mg total RNA from a normal menstrual endometrium which served as the positive control (lane 1) and each tumor tissue (lane 2: teratoma-embryonal cell carcinoma, lane 3: mixed germ cell tumor containing embryonal carcinoma, lanes 4-6; seminoma) were subjected to the Northern blot analysis using the entire placental-derived ebaf cDNA as the probe (upper panel). The blot was exposed for long duration to detect ebaf mRNA in the neoplastic tissues. This resulted in the overexposure of the ebaf mRNAs detected in the endometrium.

The results shown in FIG. 3 indicate that a 2.5 kb ebaf mRNA is detected in the tumors containing embryonal carcinoma. The 2.1 kb mRNA is also detected in two out of three cases of seminoma. The integrity of RNA and equal loading

was verified by staining the 18 S and 28 S ribosomal RNAs (not shown) and hybridization of the blots with a cDNA probe to GAPDH (lower panel).

II. RT-PCR of RNA in the Sample Followed by Southern Blotting

Cells in the bodily sample should be lysed in 0.8 ml of "TRIAGENT" solution (MRC Inc. Cincinnati, Ohio) in the presence of glycogen carrier. Supernatant containing RNA should be combined with 0.2 ml of chloroform, precipitated with isopropanol and washed with 70% ethanol. The RNA pellet should then be dissolved in RNase-free water and incubated at 37° C. with 40 U DNase I (Gibco-BRL Life Technologies) for 30 minutes. The reaction would be terminated by the addition of EDTA (20 mM) and incubation for 10 min at 65° C. Total RNA should then be precipitated overnight at -80° C. by the addition of three volumes of absolute ethanol-sodium chloride mixture. The quantity of the RNA would then be determined spectrophotometrically.

The total RNA would then be reverse transcribed in a 20 ml volume containing 2 mg RNA; 0.2 mg oligo (dT), 1.25 mM of each of dATP, dCTP, dGTP, dTTP; 5 U AMV reverse transcriptase; 10 mM MeHgOH, 88 mM β -mercaptoethanol; 10 U RNasin; 100 mM Tris-HCl (pH 8.3); 40 mM KCl and 10 mM MgCl₂. After 60 minutes of incubation at 42° C., the reaction mixture would be heated to 95° C. for 3 minutes. Following addition of 5 U of AMV, the reverse transcription would be carried out for an additional 60 minutes. After a final incubation at 95° C. for 3 minutes, reverse transcription would be terminated by placing the reaction mixture at 0° C.

1 mg of reverse transcribed RNA would then be amplified with 0.5-1 mM of each of the 5' and 3' primers specific for IL-10 in a 50 ml reaction volume containing 1.25 U AmpliTaq DNA polymerase, 1.25 mM MgCl₂, 20 mM of each of dATP, dCTP, dGTP, dTTP, 10 mM Tris-HCl (pH 8.3), 50 mM KCl, and sterile distilled water. Negative control tubes would receive non-reverse transcribed RNA to verify absence of contaminating DNA. Positive control tubes would receive all the reagents in the reaction mixture, however, the primers used would be specific for β -actin. The reaction mixture would be overlaid with 50 ml of mineral oil and the tubes would be heated for 5 minutes at 95° C. After initiation of temperature cycling with a Dual-Block Thermal Cycler (Epicomp, San Diego, Calif.), samples would be amplified for 35 cycles. The denaturation temperature would be 95° C. for 1 minute, annealing temperature would be 55° C. for 1 minute and the extension temperature would be 72° C. for 2.5 minutes. Temperature cycling would be concluded with a final extension at 72° C. for 10 minutes and the reaction products would be maintained at 4° C. Amplified products will be resolved in a 2% agarose gel and the bands would be visualized by ethidium bromide staining. The fX174 Hae III RF DNA fragments and the 123 basepair DNA ladder will be used as molecular weight markers.

III. Immunoassay

Once antibodies have been raised against the ebaf isoforms, immunoassays can be used to determine whether a bodily sample exhibits increased levels of expression of the ebaf gene. Either polyclonal or monoclonal antibodies can be used in these assays. The level of expression of the ebaf gene observed from any of these assays should be compared with the basal level of expression of the ebaf believed to be present in healthy samples. If the level or expression is increased relative to this basal level, it is indicative to an adenocarcinoma of the testis, or mucinous adenocarcinoma of the colon or ovaries.

A. Western Blotting

Initially, proteins in the bodily sample are solubilized by adding to the bodily sample an equal volume of 2×SDS lysis buffer (6% SDS, 0.14 M Tris, pH 6.8, 22.4% glycerol) and the chromosomal DNA would be sheared by repeatedly passing the sample through a 20-gauge needle and then through a 26-gauge needle. The sample would then be spun at 10,000×g for 10 minutes and the amount of protein in the supernatants would be determined using the BCA assay kit (Pierce, Rockford, Ill.). Then, mercaptoethanol (5%) and bromophenol blue (0.5%) would be added and the sample will be boiled for 5 minutes.

Tissue lysates would then be subjected to SDS-PAGE and separated proteins would be transferred to a nitrocellulose or nylon membrane. The membrane would be preblocked by incubation in TBST (10 mM Tris, pH 8.0; 150 mM NaCl; 0.05% Tween-20) containing 3% bovine serum albumin (BSA) at 25° C. for two hours. After washings in TBST (×4), the membrane would be stained by avidin-biotin-peroxidase complex (ABC) procedure (Hsu et al, 1981). This would be done by sequential incubation of the blot, with TBST containing 1% BSA and primary antibody (2-12 hours), and then with secondary antibody (2 hours), and finally ABC (2 hours). Each incubation would be carried at 37° C. and will be followed by two washes in TBST. The immunoreactive band(s) would be revealed by incubation of the blot with a mixture of 3,3' diaminobenzidine tetrahydrochloride (DAB)-H₂O₂. As controls, primary antibody, secondary antibody or ABC would be omitted from the staining reaction. Primary antibody would be substituted with isotype specific antibody or pre-immune serum at the same protein concentration.

B. Immunohistochemical Staining

Frozen sections will be fixed in 10% buffered formalin for 5 minutes and then washed in 0.1 M PBS. If paraffin sections are used, these will be deparaffinized in xylene and descending series of ethyl alcohol and finally washed in 0.1 M PBS.

Immunostaining would be performed according to the ABC procedure as described in the Western Blot. When paraffin sections are used, if no signal can be detected, sections would be treated prior to immunostaining with pepsin or trypsin as described (Shah et al, 1987a,b). Sections to be viewed at the light microscopic level will be evaluated with and without counterstain.

C. Enzyme Linked Immunosorbent Assay (ELISA)

ELISA is based on antigen-antibody reaction and a subsequent enzyme-mediated color development. The ELISA plates would be made in this laboratory as described in Harlow, E. and Lane, D. *Antibodies: A Laboratory Manual*. Cold Spring Harbor Laboratory, Cold Spring Harbor, N.Y. (1988). If only a monoclonal antibody is available, the antibody capture assay should be used. When both polyclonal and monoclonal antibodies are available the sandwich ELISA for detecting and quantifying the antigen should be used.

Initially, polyclonal antiserum would be raised in rabbits immunized with a bacterially produced chimeric fusion protein or a synthesized peptide of at least one of the isoforms of produced from ebaf gene expression. If required, a second peptide would be used to raise a second polyclonal antiserum or monoclonal antibody specific to a different protein domain. Monoclonal antibodies would be synthesized by a commercial vendor (bioWorld, Dublin, Ohio). The positive clones would be identified by ELISA and then expanded. The specificity of the monoclonal antibodies would be tested against the in vitro expressed proteins.

In the antibody capture assay, known amounts of purified antigen and the bodily sample with an unknown amount of antigen would be bound to the individual wells of a PVC

11

microtitre plate. PVC will bind approximately 100 ng/well (300 ng/cm²). The plate would be incubated at room temperature for two hours. The plate would then be washed in PBS and remaining sites on the PVC plate would be saturated overnight in a humid atmosphere at room temperature with a blocking buffer (3% BSA/PBS) containing 0.2% sodium azide. After washing the plate twice with PBS, 50 ml of alkaline phosphatase-labeled antibody solution prepared in the same buffer would be added to each well and incubated for two hours at room temperature in a humid atmosphere. The unbound antibody would be removed by washing the plates four times in PBS.

To ensure that the assay is accurate, the amount of alkaline phosphatase-labeled antibody will be used in excess. The level of secondary antibody needed will be determined by titrating the alkaline phosphatase-labeled antibody. Once standards are prepared for the detection of known quantities of purified protein, the amount of protein in the samples will be determined using the kit. The amount of unknown protein will be extrapolated from a standard curve based on the known amounts of protein.

In the sandwich ELISA, the plates would be coated with the primary monoclonal antibody (20 mg/ml in PBS). After

12

washing the wells with PBS, 50 ml of known amounts of purified antigen and various dilutions of lysate from the bodily sample would be added to the various wells of the plate. After washing, the alkaline phosphatase-labeled antibody to the antigen would be added and the plates re-washed. Each incubation would be for two hours at room temperature. A chemiluminescent detection system (Tropix, Bedford, Mass.) would be used for detection. This system includes incubation of the plates with an antibody, followed by activation of a substrate (CSPD) that emits light. The amount of light emitted would be directly related to the level of expression of the eba gene in the sample lysate, and the level would be quantitated by luminometry.

Applicants believe that, any method, either known now or subsequently discovered, which is capable of determining whether the eba gene is being expressed in a particular bodily tissue, is an acceptable method to practice the present invention. Hence, many other variations and modifications of the invention will be apparent to those skilled in the art without departing from the spirit and scope of the invention. The above-described embodiments are, therefore, intended to be merely exemplary, and all such variations and modifications are intended to be included within the scope of the invention.

SEQUENCE LISTING

<160> NUMBER OF SEQ ID NOS: 3

<210> SEQ ID NO 1

<211> LENGTH: 1962

<212> TYPE: DNA

<213> ORGANISM: Homo sapiens

<400> SEQUENCE: 1

```

ccccactctg cctcctgctc cccagggca gcacatgtg gcccctgtgg ctctgctggg    60
cactctgggt gctgccctg gctggcccg gggcgccct gaccgaggag cagctcctgg    120
cgagcctgct gcggcagctg cagctcagcg aggtgccgt actggacagg gccgacatgg    180
agaagctggt catcccgcc cactgaggg cccagtatgt agtcctgctg cggcgcgacg    240
gggaccgctc ccgcggaaag aggttcagcc agagcttccg agaggtggcc ggcagggttc    300
tggtcgctga ggcagcaca cacctgctgg ttttcggcat ggagcagcgg ctgccgcca    360
acagcgagct ggtgcaggcc gtgtgcggc tcttcaggga gccgggtccc caaggcgccg    420
tgacacaggc cggggcgctg tcccggcag cgcacaagg ccgggtgacc gtcgagtggc    480
tggtccgcca cgacggctcc aaccgcacct ccctcatga ctccaggctg gtgtccgtcc    540
acgagagcgg ctggaaggcc ttgcagctga ccgaggccgt gaacttctgg cagcagctga    600
gccggccccc ggagccgctg ctctacagg tgtcggtgca gaggagcat ctgggcccgc    660
tggtcgctcg cgccacaag ctggtccgct ttgcctcga gggggcgcca gccgggcttg    720
gggagcccca gctggagctg cacaccctgg acctcaggga ctatggagct caggcgact    780
gtgacctga agcaccatg accgaggca ccgctgctg ccgccaggag atgtacattg    840
acctgcaggg gatgaagtgg gccagaact ggggtgctga gccccgggc ttcctggctt    900
acgagtgtgt gggcacctgc cagcagccc cggaggccct ggccttcaat tggccatttc    960
tggggcgcg acagtgtat gcctcgaga ctgctcgtg gcccatgac gtcagcatca    1020
aggagggagg caggaccagg cccaggtgg tcagcctgcc caacatgagg gtgcagaagt    1080
gcagctgtgc ctggatggg gcgctcgtg caaggaggct ccagcatagg cctgggtgta    1140

```

-continued

```

tccattgagc ctctaactga acgtgtgcat aagagggtgt cttaatgtag ggcgttaact 1200
ttatacttag caagttactc catcccaatt tagtgctcct gtgtgacctc gccctgtgtc 1260
cttcatttcc tgtctttccc gtccatcacc catcctaagc acttacgtga gtaaataatg 1320
cagctcagat gctgagctct agtaggaaat gctggcatgc tgattacaag atacagctga 1380
gcaatgcaca cattttcagc tgggagtttc tggtctctgg caaattcttc actgagctgt 1440
gaacaataat accctatgat tagaactggg gaaacagaac tgaattgctg tggtatatga 1500
ggaattaaaa ccttcaaatc tctatttccc ccaaatactg acccattctg gacttttgta 1560
aacataccta gggccctgtt cccctgagag ggtgctaaga ggaaggatga gggcttcagg 1620
ctgggggcag tggacaggga attgggatac ctggattctg gttctgacag ggccacaagc 1680
taggatctct aacaaacgca gaaggctttg gctcgtcatt tcctcttaaa aaaggaggag 1740
ctgggcttca gctctaagaa cttcattgcc ctggggatca gacagccctc acctaccctc 1800
gccactcctc ctggagactg agccttgccc gtgcataatt aggtcatttc ccacactgtc 1860
ttagagaact tgtcaccaga aaccacatgt atttgcattg tttttgttaa tttagctaaa 1920
gcaattgaat gtagatactc agaagaaata aaaaatgatg tt 1962

```

```

<210> SEQ ID NO 2
<211> LENGTH: 1961
<212> TYPE: DNA
<213> ORGANISM: Homo sapiens
<220> FEATURE:
<221> NAME/KEY: misc_feature
<222> LOCATION: (1)..(1961)
<223> OTHER INFORMATION: Nucleotide and deduced amino acid sequences of
ebaf.
<220> FEATURE:
<221> NAME/KEY: CDS
<222> LOCATION: (34)..(1143)
<220> FEATURE:
<221> NAME/KEY: misc_feature
<222> LOCATION: (34)..(96)
<223> OTHER INFORMATION: Potential signal peptide
<220> FEATURE:
<221> NAME/KEY: misc_feature
<222> LOCATION: (251)..(261)
<223> OTHER INFORMATION: Putative tetrabasic processing site
<220> FEATURE:
<221> NAME/KEY: misc_feature
<222> LOCATION: (424)..(435)
<223> OTHER INFORMATION: Putative tetrabasic processing site
<220> FEATURE:
<221> NAME/KEY: misc_feature
<222> LOCATION: (499)..(501)
<223> OTHER INFORMATION: Potential glycosylation site
<220> FEATURE:
<221> NAME/KEY: misc_feature
<222> LOCATION: (1946)..(1951)
<223> OTHER INFORMATION: Consensus polyadenylation signal that is
present eight bases upstream from the poly-A tail of ebaf cDNA.
<400> SEQUENCE: 2

```

```

ccactctgcc tcctgctccc ccagggcagc acc atg tgg ccc ctg tgg ctc tgc 54
Met Trp Pro Leu Trp Leu Cys
1 5

tgg gca ctc tgg gtg ctg ccc ctg gct gcc ccc ggg gcg gcc ctg acc 102
Trp Ala Leu Trp Val Leu Pro Leu Ala Gly Pro Gly Ala Ala Leu Thr
10 15 20

gag gag cag ctc ctg gcg agc ctg ctg cgg cag ctg cag ctc agc gag 150
Glu Glu Gln Leu Leu Ala Ser Leu Leu Arg Gln Leu Gln Leu Ser Glu
25 30 35

gtg ccc gta ctg gac agg gcc gac atg gag aag ctg gtc atc ccc gcc 198

```

-continued

Val 40	Pro	Val	Leu	Asp	Arg 45	Ala	Asp	Met	Glu	Lys 50	Leu	Val	Ile	Pro	Ala 55	
cac	gtg	agg	gcc	cag	tat	gta	gtc	ctg	ctg	cgg	cgc	gac	ggg	gac	cgc	246
His	Val	Arg	Ala	Gln	Tyr	Val	Val	Leu	Leu	Arg	Arg	Asp	Gly	Asp	Arg	
				60					65					70		
tcc	cgc	gga	aag	agg	ttc	agc	cag	agc	ttc	cga	gag	gtg	gcc	ggc	agg	294
Ser	Arg	Gly	Lys	Arg	Phe	Ser	Gln	Ser	Phe	Arg	Glu	Val	Ala	Gly	Arg	
			75					80					85			
ttc	ctg	gcg	tcg	gag	gcc	agc	aca	cac	ctg	ctg	gtg	ttc	ggc	atg	gag	342
Phe	Leu	Ala	Ser	Glu	Ala	Ser	Thr	His	Leu	Leu	Val	Phe	Gly	Met	Glu	
		90					95					100				
cag	cgg	ctg	ccg	ccc	aac	agc	gag	ctg	gtg	cag	gcc	gtg	ctg	cgg	ctc	390
Gln	Arg	Leu	Pro	Pro	Asn	Ser	Glu	Leu	Val	Gln	Ala	Val	Leu	Arg	Leu	
	105				110					115						
ttc	cag	gag	ccg	gtt	ccc	caa	ggc	gcg	ctg	cac	agg	cac	ggg	cgg	ctg	438
Phe	Gln	Glu	Pro	Val	Pro	Gln	Gly	Ala	Leu	His	Arg	His	Gly	Arg	Leu	
	120				125					130					135	
tcc	ccg	gca	gcg	ccc	aag	gcc	cgg	gtg	acc	gtc	gag	tgg	ctg	gtc	cgc	486
Ser	Pro	Ala	Ala	Pro	Lys	Ala	Arg	Val	Thr	Val	Glu	Trp	Leu	Val	Arg	
				140					145					150		
gac	gac	ggc	tcc	aac	cgc	acc	tcc	ctc	atc	gac	tcc	agg	ctg	gtg	tcc	534
Asp	Asp	Gly	Ser	Asn	Arg	Thr	Ser	Leu	Ile	Asp	Ser	Arg	Leu	Val	Ser	
			155					160					165			
gtc	cac	gag	agc	ggc	tgg	aag	gcc	ttc	gac	gtg	acc	gag	gcc	gtg	aac	582
Val	His	Glu	Ser	Gly	Trp	Lys	Ala	Phe	Asp	Val	Thr	Glu	Ala	Val	Asn	
		170					175					180				
ttc	tgg	cag	cag	ctg	agc	cgg	ccc	ccg	gag	ccg	ctg	ctc	gta	cag	gtg	630
Phe	Trp	Gln	Gln	Leu	Ser	Arg	Pro	Pro	Glu	Pro	Leu	Leu	Val	Gln	Val	
	185					190					195					
tcg	gtg	cag	agg	gag	cat	ctg	ggc	ccg	ctg	gcg	tcc	ggc	gcc	cac	aag	678
Ser	Val	Gln	Arg	Glu	His	Leu	Gly	Pro	Leu	Ala	Ser	Gly	Ala	His	Lys	
	200				205					210					215	
ctg	gtc	cgc	ttt	gcc	tcg	cag	ggg	gcg	cca	gcc	ggg	ctt	ggg	gag	ccc	726
Leu	Val	Arg	Phe	Ala	Ser	Gln	Gly	Ala	Pro	Ala	Gly	Leu	Gly	Glu	Pro	
				220				225						230		
cag	ctg	gag	ctg	cac	acc	ctg	gac	ctc	agg	gac	tat	gga	gct	cag	ggc	774
Gln	Leu	Glu	Leu	His	Thr	Leu	Asp	Leu	Arg	Asp	Tyr	Gly	Ala	Gln	Gly	
			235				240						245			
gac	tgt	gac	cct	gaa	gca	cca	atg	acc	gag	ggc	acc	cgc	tgc	tgc	cgc	822
Asp	Cys	Asp	Pro	Glu	Ala	Pro	Met	Thr	Glu	Gly	Thr	Arg	Cys	Cys	Arg	
		250					255					260				
cag	gag	atg	tac	att	gac	ctg	cag	ggg	atg	aag	tgg	gcc	aag	aac	tgg	870
Gln	Glu	Met	Tyr	Ile	Asp	Leu	Gln	Gly	Met	Lys	Trp	Ala	Lys	Asn	Trp	
	265				270						275					
gtg	ctg	gag	ccc	ccg	ggc	ttc	ctg	gct	tac	gag	tgt	gtg	ggc	acc	tgc	918
Val	Leu	Glu	Pro	Pro	Gly	Phe	Leu	Ala	Tyr	Glu	Cys	Val	Gly	Thr	Cys	
	280				285					290					295	
cag	cag	ccc	ccg	gaa	gcc	ctg	gcc	ttc	aat	tgg	cca	ttt	ctg	ggg	ccg	966
Gln	Gln	Pro	Pro	Glu	Ala	Leu	Ala	Phe	Asn	Trp	Pro	Phe	Leu	Gly	Pro	
				300					305					310		
cga	cag	tgt	atc	gcc	tcg	gag	act	gcc	tcg	ctg	ccc	atg	atc	gtc	agc	1014
Arg	Gln	Cys	Ile	Ala	Ser	Glu	Thr	Ala	Ser	Leu	Pro	Met	Ile	Val	Ser	
			315				320						325			
atc	aag	gag	gga	ggc	agg	acc	agg	ccc	cag	gtg	gtc	agc	ctg	ccc	aac	1062
Ile	Lys	Glu	Gly	Gly	Arg	Thr	Arg	Pro	Gln	Val	Val	Ser	Leu	Pro	Asn	
		330					335					340				
atg	agg	gtg	cag	aag	tgc	agc	tgt	gcc	tcg	gat	ggg	gcg	ctc	gtg	cca	1110
Met	Arg	Val	Gln	Lys	Cys	Ser	Cys	Ala	Ser	Asp	Gly	Ala	Leu	Val	Pro	
		345				350					355					

-continued

```

agg agg ctc cag cat agg ccc tgg tgt atc cat tgagcctcta actgaacgtg 1163
Arg Arg Leu Gln His Arg Pro Trp Cys Ile His
360                365                370

tgcataagag gtggtcttaa tgtagggcgt taactttata cttagcaagt tactccatcc 1223
caatttagtg ctctgtgtg acctcgccct gtgtccttcc attcctgtct tccccgtcca 1283
tcacccatcc taagcactta cgtgagtaaa taatgcagct cagatgctga gctctagtag 1343
gaaatgctgg catgctgatt acaagataca gctgagcaat gcacacattt tcagctggga 1403
gtttctgttc tctggcaaat tcttcactga gtctggaaca ataataccct atgattagaa 1463
ctggggaaac agaactgaat tgctgtgtta tatgaggaat taaaaccttc aaatctctat 1523
tcccccaaaa tactgaccca ttctggactt ttgtaaacat acctaggccc ctgttcccct 1583
gagaggggtgc taagaggaag gatgaagggc ttcaggctgg gggcagtgga cagggaattg 1643
ggataacctgg attctgggtc tgacagggcc acaagctagg atctctaaca aacgcagaag 1703
gctttggctc gtcatttctt cttaaaaaag gaggagctgg gcttcagctc taagaacttc 1763
attgccctgg ggatcagaca gccctacct acccctgccc actcctctgg agactgagcc 1823
ttgcccgctgc atatttaggt catttccac actgtcttag agaacttgct accagaaacc 1883
acatgtatatt gcatgttttt tgttaattta gctaaagcaa ttgaatgtag atactcagaa 1943
gaaataaaaa atgatgtt                                     1961

```

```

<210> SEQ ID NO 3
<211> LENGTH: 370
<212> TYPE: PRT
<213> ORGANISM: Homo sapiens

```

```

<400> SEQUENCE: 3

```

```

Met Trp Pro Leu Trp Leu Cys Trp Ala Leu Trp Val Leu Pro Leu Ala
1                5                10                15

Gly Pro Gly Ala Ala Leu Thr Glu Glu Gln Leu Leu Ala Ser Leu Leu
20                25                30

Arg Gln Leu Gln Leu Ser Glu Val Pro Val Leu Asp Arg Ala Asp Met
35                40                45

Glu Lys Leu Val Ile Pro Ala His Val Arg Ala Gln Tyr Val Val Leu
50                55                60

Leu Arg Arg Asp Gly Asp Arg Ser Arg Gly Lys Arg Phe Ser Gln Ser
65                70                75                80

Phe Arg Glu Val Ala Gly Arg Phe Leu Ala Ser Glu Ala Ser Thr His
85                90                95

Leu Leu Val Phe Gly Met Glu Gln Arg Leu Pro Pro Asn Ser Glu Leu
100               105               110

Val Gln Ala Val Leu Arg Leu Phe Gln Glu Pro Val Pro Gln Gly Ala
115               120               125

Leu His Arg His Gly Arg Leu Ser Pro Ala Ala Pro Lys Ala Arg Val
130               135               140

Thr Val Glu Trp Leu Val Arg Asp Asp Gly Ser Asn Arg Thr Ser Leu
145               150               155               160

Ile Asp Ser Arg Leu Val Ser Val His Glu Ser Gly Trp Lys Ala Phe
165               170               175

Asp Val Thr Glu Ala Val Asn Phe Trp Gln Gln Leu Ser Arg Pro Pro
180               185               190

Glu Pro Leu Leu Val Gln Val Ser Val Gln Arg Glu His Leu Gly Pro
195               200               205

```

-continued

Leu	Ala	Ser	Gly	Ala	His	Lys	Leu	Val	Arg	Phe	Ala	Ser	Gln	Gly	Ala
210						215					220				
Pro	Ala	Gly	Leu	Gly	Glu	Pro	Gln	Leu	Glu	Leu	His	Thr	Leu	Asp	Leu
225					230					235					240
Arg	Asp	Tyr	Gly	Ala	Gln	Gly	Asp	Cys	Asp	Pro	Glu	Ala	Pro	Met	Thr
			245						250					255	
Glu	Gly	Thr	Arg	Cys	Cys	Arg	Gln	Glu	Met	Tyr	Ile	Asp	Leu	Gln	Gly
			260					265					270		
Met	Lys	Trp	Ala	Lys	Asn	Trp	Val	Leu	Glu	Pro	Pro	Gly	Phe	Leu	Ala
		275					280					285			
Tyr	Glu	Cys	Val	Gly	Thr	Cys	Gln	Gln	Pro	Pro	Glu	Ala	Leu	Ala	Phe
	290					295				300					
Asn	Trp	Pro	Phe	Leu	Gly	Pro	Arg	Gln	Cys	Ile	Ala	Ser	Glu	Thr	Ala
305					310					315					320
Ser	Leu	Pro	Met	Ile	Val	Ser	Ile	Lys	Glu	Gly	Gly	Arg	Thr	Arg	Pro
			325						330					335	
Gln	Val	Val	Ser	Leu	Pro	Asn	Met	Arg	Val	Gln	Lys	Cys	Ser	Cys	Ala
			340					345					350		
Ser	Asp	Gly	Ala	Leu	Val	Pro	Arg	Arg	Leu	Gln	His	Arg	Pro	Trp	Cys
		355					360					365			
Ile	His														
	370														

We claim:

1. An isolated antibody that specifically binds to the polypeptide of SEQ ID NO: 3.
2. The isolated antibody according to claim 1, wherein said antibody is polyclonal.
3. The isolated antibody according to claim 1, wherein said antibody is monoclonal.
4. A composition comprising a buffer and an antibody according to claim 1.
5. The composition according to claim 4, wherein said antibody is polyclonal.
6. The composition according to claim 4, wherein said antibody is monoclonal.

* * * * *

UNITED STATES PATENT AND TRADEMARK OFFICE
CERTIFICATE OF CORRECTION

PATENT NO. : 7,705,131 B2
APPLICATION NO. : 11/654074
DATED : April 27, 2010
INVENTOR(S) : Siamak Tabibzadeh and Ravi Kothapalli

Page 1 of 1

It is certified that error appears in the above-identified patent and that said Letters Patent is hereby corrected as shown below:

Column 4,

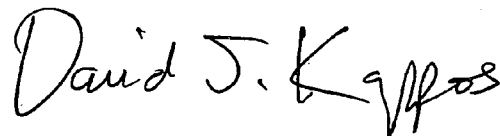
Line 10, "shortcomings or the prior art" should read --shortcomings of the prior art--.

Column 6,

Lines 6-7, "spectro-photometrically" should read --spectrophotometrically--.

Signed and Sealed this

Twenty-eighth Day of September, 2010

A handwritten signature in black ink that reads "David J. Kappos". The signature is written in a cursive, flowing style with a large, stylized 'D' and 'K'.

David J. Kappos
Director of the United States Patent and Trademark Office