

March 1967

## The Oracle, March 15, 1967

Harry Haigley

Follow this and additional works at: [https://digitalcommons.usf.edu/usf\\_oracle\\_spc](https://digitalcommons.usf.edu/usf_oracle_spc)

---

### Recommended Citation

Haigley, Harry, "The Oracle, March 15, 1967" (1967). *The Oracle (Print Editions)*. 463.  
[https://digitalcommons.usf.edu/usf\\_oracle\\_spc/463](https://digitalcommons.usf.edu/usf_oracle_spc/463)

This Book is brought to you for free and open access by the USF Oracle Archive at Digital Commons @ University of South Florida. It has been accepted for inclusion in The Oracle (Print Editions) by an authorized administrator of Digital Commons @ University of South Florida. For more information, please contact [digitalcommons@usf.edu](mailto:digitalcommons@usf.edu).



## Fate Of Medical School In Hands Of Legislature

By ALLAN SMITH  
Staff Writer

The fate of USF's proposed medical school is in the hands of a state legislature which is slated to be elected March 28.

Board of Regents Chairman, Chester Ferguson, said that the board submitted the \$10-million construction and operating budget proposal along with other recommendations to the legislature.

Ferguson said the regents didn't choose to give the project priority because the state's higher educational system has needs more urgent than the "duplicating of medical schools."

Representative William M. Register, who was unopposed in the Democratic primary last month, and faces no opposition in the March 28 general election, said the main obstacle to the project is lack of funds.

Two-thirds matching funds from the federal government have been available since November 1965.

It's expected to cost \$7¼-million for construction and \$3¼-million for operation, according to the budget requests.

Elections under a new apportionment formula ordered by a federal court last month left the chances for the proposed medical school uncertain.

Most of the local legislators have previously indicated support of the project.

A key man in the local delegation is Florida Sen. Tom Whitaker, chairman of the Senate rules committee. The delegation hopes Whitaker's influence would help.

But there's a problem. Whitaker, a Democrat, faces a race in the general election against a man who

narrowly lost to him last November — Joseph A. McClain, Republican.

McClain says he supports the medical school project, but the Democrat legislators argue that he would hold no seniority. Whitaker has been in the legislature since 1958.

Hillsborough's nine representatives and two senators can't approve the school themselves. They'll need the rest, or at least, a majority of the legislature.

One advantage the politicians hope they have is that Register and Representative Terrell Sessem are on the higher education committee.

The membership would provide influence for the local delegation.

The legislators will also need somebody to help "sell" the idea of a medical school here.

Somebody is.

President John S. Allen said a pamphlet has been printed to explain the case for putting Florida's third medical school on this campus now.

The booklet says it should be built here because:

✓ Building it now would save the state money, because construction costs continue to increase.

✓ Here it would serve more people — about 40 per cent of the state's population.

✓ New Veteran's administration hospital would provide clinical and research facilities.

✓ Tampa is an urban medical center with multiple related medical services. Tampa General Hospital and St. Joseph's Hospital are here.

✓ Tampa leads in geriatrics, a field that deals with diseases of old age.

✓ The state legislature has designated USF as the site of the third medical school in the state. That was in 1965.

✓ A medical school was provided for when USF was planned.

Allen said the school, if approved, would have an open faculty system. That, he said, would permit USF to take advantage of the services of specialists in the area.

Allen said a closed faculty only permits full-time professors to be used for lectures and demonstrations.

The booklet that promotes the medical-school-here-now idea, says that the cost of a medical school in the United States today is about \$30-million.

It says construction in Florida would be about 6.5 per cent less. In addition, the new VA hospital would provide hospital facilities which would save \$6¼-million.

That leaves the cost at about \$21¼-million. The federal government has already offered to pay two-thirds of the cost. That leaves the bill for the state at about \$7¼-million.

### GOVERNOR KIRK

## Well Polished Coin Low In Popularity At USF

By DORAN CUSHING  
Correspondent

USF students favored LeRoy Collins for Florida governor by a 2 to 1 margin over Gov. Claude Kirk and other opponents in a recent campus survey.

A tax increase to support education was favored by 75 per cent of the 220 students questioned. Over half of these students are of voting age. These same students believe that Kirk's policies will hinder Florida's educational system.

Six out of 10 students indicated they do not approve of Governor Kirk's "War on Crime". The other 40 per cent were evenly divided in favor of the governor's method of attack on crime, or are indifferent.

Male students indicated Governor Kirk did not use his courtship and marriage to gain publicity. However, the majority of the female students questioned, said Kirk used his courtship for publicity purposes.

Students in favor of Governor Kirk describe him as "businessman, dynamic, experimental, and reliable." One student described Kirk as "a man capable of withstanding the majority of Democratic criticism. Certainly he will benefit the state if for no other reason than reviving the two-party system."

Another student favorably stated that the governor is "a dynamic individual who knows what he wants from his fellow workers, himself and the State of Florida."

Those opposed to Kirk called him "egotistical, foolish, naive and undesirable — a smooth, polished coin which, unfortunately, is counterfeit."

One student elaborated, "I believe he's foolish to think he can function effectively in progressing without a tax in-

crease — there will have to be more money available if Florida is to catch up with the needs of education. Kirk seems as if he will do nothing to up-date the schools or add new programs."

Some students feel Governor Kirk has not been in office long enough to be judged

fairly. They said, "his performance hasn't been fully established as yet" and that "he hasn't been in office long enough for one to tell."

The political preferences of USF students is evenly divided among Democrats, Republicans and Independents according to the survey.

## Action Line Dial 619

*Action Line 619 is your key to action and information. Anyone with a request for something to be done is invited to call extension 619 and ask for Action Line. A member of the Oracle Editorial Board will take your request or question. Then we'll find out why or why not something was done or not done. The information is yours for the asking. Action Line is open every week day from 8 a.m. to 5 p.m.*

**QUESTION:** Why can't the curriculum lab in the library basement be open on week-ends?

**ANSWER:** Because the library does not have the funds to staff the personnel.

**QUESTION:** Why isn't there a ramp for wheelchairs located at the Andros cafeteria?

**ANSWER:** Crippled students are assigned to Beta

and Gamma dorms in Argos Center. C. Barth Engert, assistant director of housing, says that if there isn't a ramp there, there should be one, since some crippled students who are members of fraternities and sororities live at Andros.

**QUESTION:** Who is on the Traffic Committee?

**ANSWER:** The committee includes the Dean of Engineering, Edgar Kopp, administrative representative; William Durkin, non-academic representative; Dr. George Cowell, faculty representative, and the two student representatives Jan Tomlinson, 3CB, and Rick Catlin, 2CB. Clyde Hill, director of the physical plant, presides but does not vote.

(Continued on page 4)

## Foundation Needs Funds

The USF Foundation needs contributions to help pay registration and tuition fees for the University Scholars Awards.

Sixteen exceptionally creative graduate students will receive \$2100 stipends. \$3600 more is needed to cover the registration fees.

A club may sponsor one student for \$300, but any contributions will help.

Donors so far include the Palma Ceia Women's Club, Morrison's Cafeteria, and the USF Art Department.

For information on the program, contact Jack A. Chambers, Director of Personnel Services, ADM 280, ext. 143.

Mary Ann Albritton, 2CB, was among five finalists Sunday in the Florida Citrus Queen contest at Winter Haven.

She was one of 21 girls from Florida who entered the contest.

## SA 'Strongly Opposes' Proposed Parking Plan

By JEFF WEIL  
Staff Writer

The Student Association (SA) legislature voiced "strong opposition" to the University Traffic Committee's proposed parking plan in a three-hour session Thursday night.

The only alternate policy that the SA recommended was a resolution by Representative James D. Cooner.

Cooner's resolution stated that, "We the Student Association of USF, declare our strong opposition to the automobile registration fee recommended by the University Traffic Committee, because; according to the Florida Con-

stitution and Florida Statutes, the responsibility for financing state institutions of higher learning and their support facilities is vested in the State Board of Education and Legislature."

**UNDER THE PLAN** submitted by the Traffic Committee, students and staff will have to pay \$5 to register one car and \$2 to register a second car.

Clyde Hill, chairman of the University Traffic Committee, defended proposed fees and fines as "necessary to provide adequate parking at USF."

According to Hill, "the Traffic Committee has investigated every possible source of funds for parking lots and the registration fee is the only available source of money for building new parking lots."

**ABOUT 8,600** students attend USF with 10,000 cars registered. 4,000 parking spaces are available.

A projection for next year shows 10,000 students with 10,800 cars registered and 4,600 parking spaces.

"The students will," according to Senator Frank Winkles, "be paying a \$5 car registering fee next year for the same conditions that exist right now. There will still be 2½ cars to each parking space."

**SA VICE PRESIDENT** Don Gifford said "a 600 car lot will be built for the faculty and staff who cannot pay the registering fee. This outlet will not be available to the students."

"The \$5 plan," Winkles said, "has only been approved by the Traffic Committee. This matter still has to go before the Executive Committee, the President and the State Board of Regents. If anyone has any complaints they should voice their opinions."

The executive Committee consists of Pres. John S. Allen; Herbert J. Wunderlich, dean of student affairs; Harris W. Dean, dean of Academic Affairs and Robert L. Denard, dean of administration.

**SA VICE PRESIDENT** Don Gifford said he is, "investigating through Congressman Sam Gibbons the possibilities

## New 'Reminding' System For Traffic Fines Begun

Reminders to traffic violators will be sent out earlier by the Security Office to give the violator a better chance to appeal the citation, according to James Garner, superintendent of Security and Communications.

Until now the right to appeal a citation was forfeited seven working days after the violation, and the reminding letter has been sent out after the seventh day. Now, the letter will be sent out after the fourth working day after the violation, which will give the

violator a couple of days to appeal.

**"WE THINK** this change was necessary," Garner said. "Sometimes traffic violation tickets are torn off the car, and the violator never got the ticket."

The change will go into effect as soon as new letters are printed.

The change will not affect the late charges. After three working days an additional dollar is added to the fine and another dollar is added after seven working days.

of federal financing for parking lots. We have also, not as of yet been denied state funds for parking lots," he said.

"Asking the students to put the money up for these needed lots seems to be the easy way out for the administration," Winkles said.

The legislature tabled until next week a resolution that called for the acceptance of the Petruska-Grady Parking Plan.

**THE PLAN** calls for four classes of parking which will have the students and staff pay for the prime parking spaces. "This plan provided a more equal distribution of the parking instead of the 'scramble system' proposed by the Traffic Committee," its sponsor Senator Andy Petruska said. CB representative Denny Grady co-sponsored it.

"The student legislature did not pass the Petruska-Grady plan because they felt it would have been a compromise with the proposals of the Traffic Committee. The students don't want to pay any fee because all sources of allocation have not been investigated," Senator Winkles said.

Clifford Klaus has been appointed by John Hogue, pending the SA's approval, as a justice to the Student Court of Review.

**HUGH BROOKS** has also been appointed, pending Pres.

Allen's approval, to the Traffic Committee.

Allen will be at the next SA meeting Thursday at 7 p.m. in the University Center.

Legislators absent from the meeting were: Dave Schutt, Donna Beagles, Dave Clark, Mike Wedge, and Frank Walther.

## Theatre Guild To Highlight Shakespeare

"The World of Shakespeare" will be presented by the Reader's Theatre Guild at 2 p.m. today in University Center 252.

According to Frank Galati, instructor of speech and director of Reader's Theatre, "The production will attempt to demonstrate the sense of life and affirmation implicit in a large portion of Shakespeare's world."

Scenes from Julius Caesar, Midsummer Night's Dream, The Merchant of Venice, The Tempest and the sonnets will be included in the production.

The cast will include Doug Kay, Art Taxman, Joseph John D'Esposito, Marcia Zukowski, Pamela Dameron and Joey Argenio who will also direct the play. Barry Simms will play the guitar.

### Good Friday Said No Holiday Here

USF will hold classes on Good Friday, March 24, according to Harris Dean, dean of Academic Affairs. "No religious holidays are observed at USF," stated Dean.

"Good Friday was a holiday last year because of a mistake in the catalog," Dean explained.

"It is the policy of the University," stated Dean, "that on a religious holiday a student will not be penalized for missing class."



### Explosive Play To Open

George (Joey Argenio) attacks his wife, Martha, (Elizabeth Lynch) for buttering up to Nick (Art Taxman), who now tries to hold back George. This scene and many "verbal fireworks" are part of the play "Who's Afraid of Virginia Woolf," which will be performed

Thursday through Saturday nights in Andros Lounge. The Edward Albee play has been given in cities around the world. It is being performed here by USF students as an Experimental Theatre production. For story and another picture of the play, see page 10.

## Festival Said Impressive

By LARRY GOODMAN  
Fine Arts Editor



WALLACE

MacLEISH

ROSCOW

The Fourth Annual Poetry Festival has come and gone. In its wake it left the USF community and over 200 persons from 18 Florida Universities, colleges and junior colleges generally inspired as a result of two jam-packed days of events. Providing the main inspiration were Archibald MacLeish and Robert Wallace.

MacLeish was here for six days on campus as USF's first poet-in-residence and general focal point of the Festival. Wallace returned for the third straight year as director of the Poets' Workshop.

MacLeish both impressed and was impressed. And as America's most honored living poet, (winner of three Pulitzer Prizes and 17 honorary doctorate degrees), he be-

came even more honored, both formally and informally. Following his Friday night lecture (before some 550 persons), he was presented a University Medallion — a bronze replica of the University seal — by USF president, John S. Allen. Then, Saturday afternoon, at the end of the final Festival assembly, MacLeish was honored informally by a USF presentation in which commemorative notes from 15 noted literary figures

and statesmen were read congratulating him on his coming 75th birthday (May 7). Included were messages from Mark Van Doren, U Thant, and Vice President Hubert Humphrey.

**FOLLOWING** the presentation, MacLeish said, "I've heard of speakers being silenced by their introduction, but I'm more than silenced — I'm paralyzed — by this." He

(Continued on page 3)



USF Photo

### Chats With Students

Archibald MacLeish listens to a question by Joseph D'Esposito, 2TA, while he reaches for a pen to autograph a book. Gail Reeves, 3CB, looks on. The informal chat

followed last Wednesday's "Meet the Author" coffee hour, in which MacLeish spoke to over 300 students and faculty members.

## USF Symphony Orchestra Presents Concert Tonight

Edward Proedor will conduct the University - Community Symphony Orchestra tonight in concert, 8:30 p.m. in the Theatre. Evelyn Barchard, 2CB, is violinist. The program and featured students will be in the following order: Brahms' "Academic Festival Overture," guest conductor: Joseph Kreines; Mozart's "Concerto for Horn," KarenShane, 1CB, on French Horn; Telemann's "Suite for three oboes, bassoon and strings," oboists: Dorothy Farmer, 2CB, Henry Tice, 1CB, and Diane Berg, 1CB; bassoonist: Alan Hopper, 2CB. Intermission. Mendelssohn's "Concerto for violin and orchestra," violinist: Evelyn Barchard, 2CB; Gounod's "Salut Demeure" (from "Faust"), Puccini's "Che Gelida" (from "La Boheme"), and Verdi's "Questa O Quella" (from "Rigoletto), tenor vocalist: Don Pyle, 1CB; Beethoven's "Concerto No. 3 in C minor," pianist: Valrie Marks, 1CB.



## World Billiards Champ Caras Here Wednesday

Jimmy Caras, four-time world's pocket billiard champion, will appear next Wednesday at 2 p.m. and 7:30 p.m. in a billiard exhibition in University Center (CTR) 47, highlighting the week's CTR activities.

He will demonstrate billiard fundamentals and trick shots. He played his first game at age five on a miniature table. At 17 he earned the title of "Boy Wonder of the Billiard World" when he defeated Ralph Greenleaf in an exhibition in 1927. Greenleaf was then the world billiard champion.

CARAS WENT on to win the World Champion Pocket Billiards title in 1936, 1938, 1939, 1949. He and Willie Masconi share the world's record high run of 127. Caras commonly sinks 100 to 150 balls in a row.

Limited space will require students to obtain free tickets at the CTR desk. Separate tickets will be available for each performance with a limit of two tickets per person.

"Wayout" Coffee House, first held last summer, is being presented Friday at 7:30 p.m. in the CTR Ballroom. The program will be "Folk and Jazz Back to Back."

IT CONSISTS OF four acts, three folk and one jazz. Folk singers will be Tom Ewart, Ron Canady, and George and Lynn Johnson, a husband-wife duo.

Ewart, 2CB, has sung in several coffee houses in New England during summers. He appeared here in talent shows last trimester in the "professional" category. At the "Closed Door" he was lead singer for a new band, "the Rue."

Canady appeared with the "Psychedelic Dreamers," at the USF talent show.

GEORGE JOHNSON is manager of the Beaux Arts Coffee House in St. Petersburg. The Doug Crutchfield Jazz Quartet will perform for



Billiard King Here Wednesday

Jimmy Caras, four-time world champion in pocket billiards, will appear on campus next Wednesday for a demonstration of his skills during two performances. Free tickets are at the University Center desk.

The jazz portion of the program. Free coffee will be served.

The program is sponsored by the CTR Music Committee. Tickets are on sale at the CTR desk for 50 cents per person.

The CTR Movie Committee is presenting "The Chalk Garden" at 7 and 9:45 p.m. Friday and at 7 p.m. Saturday and Sunday in Fine Arts-Humanities (FAH) 101. The movie stars Deborah Kerr, Hayley Mills, and John Mills.

"The Three Worlds of Gulliver" is the feature of the Children's Film Series this Saturday at 10:30 a.m. in FAH 101. The movie is an adaptation of Jonathan Swift's satire, "Gulliver's Travels."

THE SERIES is especially for families of USF students, staff, and faculty. Members of the CTR Movies Committee will supervise the children. Admission is 10 cents for children, 25 cents for adults.

The All-Florida Undergraduate Painting Competition is on display in the CTR Ballroom for the final week, according to Betsy Gordon, chairman of the CTR Arts and Exhibits Committee. It closes Friday.

The third program in the Bridal Series is set for 2 p.m. Monday in CTR 252. Beva Dalbeck will discuss "Planning a Wedding." Included in her talk will be points on choosing invitations and announcements and planning a reception.

NEXT WEEK Joanne Torretta will speak on "How to Choose a Trousseau." Miss Torretta is a well known fashion commentator who is presently instructing the charm

## Focus Debate: Obscenity Preferable To Censorship

"Resolved: That this House prefers any kind of obscenity to all kinds of censorship." This will be the topic of the Focus Debate next Wednesday in University Center 248 at 7:30 p.m.

The International Debate between USF students and a British debate team will be sponsored by the Forensics Club of the Speech Association.

Moderator for the debate will be Jade Moore, 2CB.

Speakers on the British debate team are Miss Pamela Ings, University of Swansea, Wales; and David James Fletcher Hunt, student president of Bristol University Law School, Britain.

USF speakers are Kenneth Brown, 3CB, and Miss Helen Vanlack, 3CB. All students and faculty are invited.

## YR's Win State Offices At Quarterly Conference

Jack Crepeau, David Hurkett, Marilyn Munyer, David Snyder and Susan Tomlinson represented the USF Young Republican (YR's) Club quarterly meeting of the YR's Executive Board in Tallahassee recently.

The YR's were welcomed to Tallahassee by Gov. Claude Kirk.

State Senate Minority Leader, Sen. C. W. Bill Young was the luncheon speaker.

After lunch the YR's toured the state Capitol building and attended a reception at the governor's mansion.

Congressman Ed Gurney spoke to the YR's that evening at a banquet, followed by a

cocktail party given in his honor.

At the College Committee Executive Board meeting, Susan Tomlinson, corresponding secretary for USF's YR's, was elected as secretary-treasurer of the Committee. David Snyder, president of USF's chapter is vice-chairman of the committee.

Marilyn Munyer, public relations manager of the USF chapter, was appointed district reporter for Vanguard, the states Republican newspaper.

The next Young Republican Executive Board meeting will be in Jacksonville May 19 through May 21.

## Fraternities Await Annual Greek Week

### BETA TAU

The Brothers of Beta Tau have attained provisional status. Scott Barnett, president of Beta Tau, was chairman of Spring Spectacular.

Saturday, a semi-formal will be held at the Congress Inn, with music provided by "The Rue." Last Thursday evening the brothers hosted a social with Delta Phi Alpha sorority.

Beta Tau plans to take orphans to the Shrine Circus at Curtis Hixon Hall.

The tentative date is Sunday. In recent elections, Barnett was elected president; Neal Rosen, vice president; Andy Tobin, secretary; Mike Boyd, treasurer; Brian Pivar, historian; and Dick Abel, pledge-master.

Dr. Edward Silbert, assistant professor of history, is Beta Tau's faculty adviser.

### ZETA PHI EPSILON

Last Saturday night Zeta Phi Epsilon (ZPE) colony of Delta Tau Delta had a "Roaring 20's Party" at the Bahia Beach Resort.

March 4, the ZPE pledges defeated the pledges of Tau Epsilon Phi in football, 12-0.

### KAPPA SIGMA CHI

Pete Clark, Jon Williams and Joe Ciccarello have been named as pledges during KSC's open rush period.

KSC has submitted a petition for colonization which they hope will be given immediate approval. Future plans include a moonlight cruise and beach party.

### SIGMA NU

Brothers Sam Gordon, Wade Parsons, Denny Grady, Mike Savidge and Frank Caldwell, all members of the Student Association Legislature, aided the passage of the tow-away recommendation approved by the Legislature two weeks ago.

John Brownley, SN social chairman, announced plans for a three-way party with Enotas and Talos fraternities.

### SIGMA EPSILON

Sigma Epsilon Colony had as its guest speaker last Sunday night, Robert E. Hall, assistant professor of English. Hall, the first in a series of personalities scheduled to speak to the fraternity, spoke on "Why Do Fraternities Exist."

Pledges are now working on a new chariot at an off campus location. The chariot will be entered in both the chariot judging and chariot race during Greek Week, during the last week of March.

Several brothers and pledges accompanied colony counselor Ray King to Rollins last Saturday for a leadership workshop. The brothers also expected Grand President C. Maynard Turner, of Sigma Phi Epsilon, in the Tampa Bay Area. He was to visit the colony during his stay here.

Officers were elected last Sunday and King also presented those brothers who had passed the pledge test their colony active pins. List of col-

ony activities and next year's officers will be printed next week.

### TAU EPSILON PHI

Last Tuesday night the brothers chose to send Chancellor Menny Diner to the Tau Epsilon Phi National Convention at Grossingers in New York, Aug. 27.

This weekend, as their service project, TEP pledges will paint and do repair work on the Tampa Girls Home.

Stu Miskin was elected TEP's permanent delegate to SRG.

TEPs are looking forward to a very rewarding softball season. Last Thursday, a game was played with Lambda Chi and Friday with Theta Chi Omega.

Last Thursday a social was held with Delta Phi Alpha. Entertainment was provided by Brothers Dave Vine and Steve Kirsner, playing the piano, and Bob Fisher singing.

### TAU KAPPA EPSILON

The Brothers of Tau Kappa Epsilon are preparing for Greek Week.

The brothers will participate in the Fraternity Sing, the chariot race, the Greek Week Banquet and present a Fraternity skit during Greek Week festivities.

Internationalization for the Tekes is approaching rapidly and the brothers are preparing themselves for initiation into Tau Kappa Epsilon.

### THETA CHI OMEGA

Theta Chi is pleased to announce its sponsorship of Janet Hotard, a sister of Tri Chi sorority, as Miss November on the TKE calendar.

The TCO sweetheart will be announced at the annual Red and White Banquet at the Hawaiian Village March 17.

Two of the brothers, John McCullough and Ron Deaton, were guests of the Grand Chapter of Theta Chi fraternity at the annual Region 12 chapter convention.

TCO's new pledges are Bill Langstaff and Jim Lanus.

### ARETE

Arete pledges are working on their project, a coffee

house called "The Privy."

The "Privy" will be held Saturday at Temple Terrace Community Church from 8 p.m. to midnight. Continuous entertainment will be provided by local folk groups. A variety of refreshments will be served. Everyone is invited. Price is 75 cents and tickets and information can be obtained from any Arete pledge.

Arete held their annual Chevalier Weekend last week. Friday night they had a Mod's and Roker's party at the B & R ranch. The Edge of Night provided music; Jack Shiver's barbequed spare ribs were served. Saturday night the formal dance was held at the International Inn; the Velvets performed.

Today the Phi Delta Theta brothers will attend a Founder's Day banquet at the International Inn. The National Secretary of Phi Delta Theta will be the guest of honor.

Phi Delta Theta initiation will be on April 7 and 8.

Arete had its first social last Tuesday with Kappa Delta.

ALPHA TAU OMEGA Alpha Tau Omega colony celebrated last weekend with a luau given by the pledges at the Tampa Wildlife Club. Highlights of the evening were Hawaiian knife dances by Rick Putnam, Jack Reynolds and Larry Hilker. The pledges entertained with Hawaiian chants. Saturday night a semi-formal dance was held with music by the "Apostles."

A social was held last week with Tri-Delta sorority in the University Center.

Committee chairmen for Greek Week activities are Dave Sturgill, chariot; Dave McMullen, Greek Sing; and Stan Walsh, chairman of the Greek Dance. Wayne Smith is composing ATO's skit.

The fraternity is having a smoke with Tampa Alumni of ATO. Also the brothers anticipate the announcement of "little sisters." They will attend social functions and serve on welcoming committees.

## New Sorority Formed; Brings Total To Seven

By MARGARET MASON Staff Writer PANHELLENIC

Delta Sigma Tau Sorority achieved provisional status. There are now seven sororities.

The vice president of national Delta Gamma Sorority visited USF Tuesday. Mrs. Catherine Gary got acquainted with sorority members and Panhellenic officers at a coffee during the morning.

### TRI CHI

Tri Chi's main service project for the month will be a St. Patrick's Day party for needy children in Ybor City, Friday. Sister Janet Hotard and Judy Branz have both been selected for the Tau Kappa Epsilon fraternity calendar.

The newest pledges of Tri Chi are Mary Mathis, Leslie Blair, Judy Megaca, Sally Jo Powers, Pat Mentasane, Mary Jo Pirrung, and Diane Howarth.

### KAPPA DELTA

A car-wash was held by KDs Saturday and the pledges are planning a donut sale next month.

Phi Delta Theta fraternity entertained KDs with a social after their meeting March 7.

Pledge Chris Ercius was named sweetheart of Tau Kappa Epsilon fraternity recently. Sister Beverly Roberts has made a replica of the University seal which will be hung by Delta Eta Chapter at the Kappa Delta Convention at Pasadena, California, in June.

The pledges were honored with a party given by the sisters in Delta Lounge last Wednesday night. The party's theme was "Journey Into Sisterhood." Sisters made large, colorful paper flowers as favors for their little sisters.

Kappa Delta's annual White Rose Ball will be held Friday night at the Statler - Hilton in Clearwater Beach. Following a banquet, dancing will be to the sound of "The Apostles."

### TRI DELTA

Tri Delta held its leadership school the week of Feb. 27 for the newly elected officers. The charter was aided all week by Mrs. Olan H. Malcolm, district president, from Atlanta, Ga. At its regular meeting, March 7, officers were installed.

They were President, Lynnette Kelly; Pledge Trainer, Pat Fallon; Chaplain, Donna Beagles; Marshall, Terry Johnstone; Activities Chairman, Nancy Bonnet; Corresponding Secretary, Lynn Provenzano; Recording Secretary, Kathleen Georgius; Tri-Dent Correspondent and Publicity Chairman, Glynn Provenzano.

Also Treasurer, Donna Ur; Sponsor Chairman, Sandy Greutter; Song Leader, Jane Ropulewis; Social Chairman, Terry Taylor; Historian, Jane Wilkes; Librarian, Terry Campbell; Service Projects Chairman, Cheryl Anthony; Scholarship Chairman, Kathy Starford; Rushing Chairman, Michele Romano; Recommendations Chairman, Pam Dymmek; Pan Hellenic Delegates, Pam Fee and Elesia Nelson.

On March 3, Tri Delta took 1st place in the women's division of the intramural swim meet and met Kappa Dorm on March 8 in the first game of the softball final.

Last Wednesday, Tri Delta was invited to a social with Lambda Chi Alpha fraternity.

### DELTA ZETA

At the Delta Zeta dinner-dance Saturday evening the sisters formally presented their pledges. Announced by President Rose Marie Cali was the D. Z. Man of the Year, Bob Carpenter, president of Sigma Nu fraternity.

The sisters and pledges recently finished intramural softball with a 2-4 record but found it an enjoyable experience anyway.

Pledge Cheryl Harris was recently honored as Rainbow Girl of the Year in Orlando.

### DELTA SIGMA TAU

The newly installed sisters of Delta Sigma Tau are now wearing their green and yellow ribbons.

The officers of the new provisional are Irene Pomerantz, president; Ede Lambert, first vice president; Joan Gross, second vice president; Evelyn Trop, secretary; Sheila Fages, treasurer; Joanne Steiner, social chairman and Betsy Everett, chaplain.

Other officers are Sandra Usherson, publicity chairman and historian; Phyllis Guerra and Sherry Nissel, Panhellenic representatives; Judi Mintz, scholarship chairman; Judi Snetiker, parliamentarian; Sharyn Faro, activities chairman; Carole Newman, song leader and Mrs. Harriet Seligson, adviser.

As their first campus activity, many of the sisters took tickets to the Spring Spectacular. March 4, the sisters had a sign making social at the home of their adviser.

### ALPHA DELTA PI

Alpha Delta Pi Sorority's new officers are Sharon Barfield, president; Liana Fernandez, vice president; Charlotte White, recording secretary; Sue Alderfer, corresponding secretary; Aileen Oliva, membership selection; Karen (Charlie) Hultzen, house chairman; Angela Massari, guard; Dena Provenzano, chaplain; Bobbie Allen, membership selection; Phyllis Feagle, pledge trainer assistant.

Barbara Wendling was chosen a little sister by the brothers of Alpha Tau Omega fraternity, and Linda Diaz was chosen to represent ADPI on the Tau Kappa Epsilon fraternity calendar.

Liz Outten, vice president of Panhellenic, attended the Southeastern Panhellenic Conference in Tallahassee and stayed at the ADPI house.

**Frisch's BIG BOY**

In Tampa:  
9399 N. Florida Ave.  
Florida & Madison  
1701 S. Dale Mabry  
Clearwater - St. Petersburg

**Rick Norcross Presents**

**THE EIGHTEENTH STRING**

**COFFEE HOUSE & MUSIC EMPORIUM, INC.**

**Admission \$1.50 No Minimum**

**TWO SHOWS**  
March 17 & 18 at 8:15 & 10:30

**— FEATURING —**

**VINCE MARTIN** - Electra recording artist from Miami

**MARK BASS** - Contemporary Singer from St. Petersburg

**'1932'** - Folk-singing group from USF.

**A MIND SWAP**  
"Is There A New Morality?"  
MARCH 19 8:30 P.M.

**DR. JULIAN HARTT** - Yale University, Noah-Porter Professor of Philosophical Theology and Director of Graduate Studies in Religion.

**DR. LEROY HOWE** - Methodist Chaplain to USF.

**REV. JIM KELLER** - Presbyterian Chaplain to USF.

**25' FOR MEMBERS 35' FOR NON-MEMBERS**

**MARCH 20 8:30 P.M.**  
**OPEN HOOTENANNY**  
50' For Members - 75' For Non-Members

**10022 - 30th St. Poinsettia Plaza**  
next to the U.X. Bookstore

**UNIVERSITY**

**AUTO SERVICE CENTER**

**TRUST YOUR CAR TO THE MAN WHO WEARS THE STAR**

**FREE!**

- Complete Lubrication with each Oil Change.
- Do It Yourself Car Wash Vacuum, Soap and Water Provided.
- Pick Up & Delivery for All Maintenance Work for Students & Faculty.

**2911 E. Fowler Ave.**  
**PHONE 932-3387**

*Orange Blossom*

**DIAMOND RINGS**

**Arthur Yates JEWELER**

3802 NEPTUNE (AT DALE MABRY)  
TAMPA, FLORIDA  
PH: 253-3577

Open Fridays 'til Nine

**Ruth Hooper**

**WIG COIFFURES**

9251 56th Street - Temple Terrace  
(In the mall of the Temple Terrace Shopping Center)

**PHONE: 988-3395**

Use these valuable coupons to put your hairpieces in "top" shape!

**VALUABLE COUPON**

Save \$1.00 on any Wig or Wiglet service. Good thru March 31, 1967 (Limit: 1 coupon per item)

**VALUABLE COUPON**

Save 10% on any Wig or Wiglet accessory. Good thru March 31, 1967 (Limit: 1 coupon per purchase)

**GEORGE BARRON**

**SY SOPKIN**

**WE FURNISH COMPLETE PLANNING SERVICE . . .**

- U.S.F. Tax Sheltered Annuities
- Life Insurance Estate Planning
- Income Replacement Protection

**THE PRUDENTIAL**  
INSURANCE COMPANY OF AMERICA  
3128 W Kennedy Blvd. 876-2441

**HURRAY FOR LEGS!**

**MAKE MINE A MINI!**

Zana Clay, Freshman Class, is wearing a kaleidoscope of colors boldly patterned in a Mini Tent by Josette.

Come to any Maas Brothers every Saturday at 2:30 in the Junior Terrace for young fashion shows.





USF Photo

### Galati Gives Interpretation Tips

Speech instructor Frank Galati gives last minute tips on individual oral interpretation to Carol Kuncce (far left), Elizabeth Kolesar, and John McCollister. The three students, along with William Alexander, represented

USF in the above division of the Poetry Festival. McCollister, Miss Kolesar and Alexander were three of 13 students around the state who were judged superior in individual oral interpretation by faculty critics.

## Poetry Festival . . . . .

(Continued from Page 1)

then spoke of the great feeling of togetherness that arises when poets gather and said that USF's poetry festivals may result in "great education and human experience." About an hour earlier, MacLeish had told this reporter that he knew of no college poetry gathering anywhere in the country similar to USF's annual festival.

MacLeish arrived on Mon-

day prior to the Festival for a week of lectures and discussions with classes in English, speech, humanities and theatre. Wednesday afternoon, about 300 packed University Center 252 to hear him at the "Meet-The-Author" coffee hour. There, MacLeish, using personal references, spoke of the difficulty of one's finding an occupation to complement and allow time for the writing of poetry.

WEDNESDAY night, Mac-

Leish read the galley proofs of his new play "Herakles" to some 200 persons in the Engineering Auditorium. Based on the Greek myth, the play is to be published in "one or two months" and may well be another Pulitzer Prize winner. The audience sat enraptured, and one of the comments to MacLeish afterwards was the play contained the best poetry he's ever written.

Highlight of the Festival events was MacLeish's Friday night lecture in the Theatre.

He began by saying "It is moving and more than moving — disturbing" — to come down and find that a poetry festival is "dedicated to you, you meaning me." He then praised as "incredibly beautiful" that afternoon's USF presentation of (flute) music and dance, set to MacLeish's verse "Songs for Eve."

MacLeish commented on Robert Wallace's poetry (which Wallace had read that afternoon to a full auditorium). He cited one of Wallace's poems as an example of achieving the full meaning of poetry, according to MacLeish "what happens when words come to mean more than they mean." The poem had to do with a man who loved his dog and ended by saying how fulfilling it was "to see one man love anything enough."

MacLeish then read 20 of his own poems for slightly over an hour, usually prefacing them with comments. Several of the poems are recent and will be published in a forthcoming seventh book of verse. (He has written eight books of prose).

MacLeish read well during this period of reading and others, he seemed to enjoy reading to audiences. He enunciated clearly, gave his verse their singing rhythms, and appropriate inflection for the strong imagery and sense of sound that characterizes his work.

AFTER READING the last poem, MacLeish sat down and drew an immediate standing ovation and a 40 second applause. President Allen then presented him with the University Medallion.

Saturday afternoon, midway through the Festival luncheon, a 15x20 inch rectangular white birthday cake with 75 pink candles was brought out in honor of MacLeish. "I need four or five good blowers," he said and blew out about two-thirds of the flames.

Works by MacLeish and Wallace were then presented to eight students judged superior in poetry (from six different schools); to 13 judged superior in individual oral interpretation (from seven different schools); and to two schools (University of Miami and Florida Atlantic University) judged superior in the readers' theatre category. Included in the 21 students rated superior (by faculty critics) were five from USF: Harvey Roscow and John Giacolletti in poetry, and Elizabeth Kolesar, John McCollister, and William Alexander in oral interpretation. Festival chairmen and co-chairmen (of USF) were presented copies by MacLeish of his "Collected Poems."

NEAR the close of the luncheon, attended by some 180 persons, one name from each of the three Festival divisions was selected at random. Harvey Roscow (of USF), Susan Curran (of FSU) and the University of Miami were drawn to perform in their division — poetry, oral interpretation.

## Panty Raid Results In Extra Work For 20 Coeds

Approximately 20 girls "have agreed" to "review literature" about mobs and University emergency procedures, Margaret B. Fisher dean of women, said last Friday.

The girls, all residents of Gamma Hall, agreed to review the literature, she said, after meeting with her to discuss violations of orders during an attempted panty raid on USF girls' halls March 6. Dean Fisher said in addition they will "review what they did and why their actions were inappropriate."

NO ACTION is contemplated against any men, according to Charles Wildy, dean of men and Herber J. Wunderlich, dean of student affairs. The raid started at 10:20 p.m. when a switch was pulled at a Tampa Electric Co. substation across from Fontana Hall blacking out the campus and about 1,000 men residents streamed out of their dorms. Although there were reports of some men en-

tering girls' halls, no girls were harmed nor was there any property damage.

Sheriff's deputies arrived on campus shortly after power was restored at 11 p.m. but made no arrests. The men returned to their dorms after the lights went on.

Dean Fisher said the girls were warned to lock their doors, close their windows and draw their curtains. They were not to look out of their windows, one girl said.

The admonition was widely disregarded as many girls looked out windows, and one girl in Gamma said she and other girls shouted at the men below. The girl said she and the other girls were guilty of disobeying the orders and said she would accept her "penalty" of writing a paper. She complained, however, that

other girls were not caught and that no men were being punished.

Dean Fisher said the girls of Kappa Hall would be fully briefed on "emergency procedures" to iron out procedure misunderstandings. None agreed or were assigned to write papers.

Delta and Epsilon Halls were unaffected.

Dean Fisher said the Gamma Hall Board of Standards and the Interhall Residence Council would not be involved in any action since the action was "staff-initiated."

### Program Of Teaching Mentally Retarded Receives Fellowships

USF's program in Teacher Education for Teachers of Mentally Retarded children has received a number of Federal Fellowships at both the undergraduate and Masters level for the 1967-68 academic year.

The undergraduate fellowship pays a stipend of \$1600 plus tuition (only students who will be seniors by Sep-

tember 1967 are eligible). The Masters level fellowships are for 1 year of full time study and pay a stipend of \$2,000 plus \$600 for each dependent in addition to tuition.

These fellowships are for students interested in teaching mentally retarded children. For further information contact Melba Wood for undergraduates or Robert C. Dwyer for graduates.

**SEASCOPE OF NORTH TAMPA**  
**RENTALS** SKIN DIVER'S AIR STATION **REPAIRS**  
 "We Sell and Service Diving Equipment"  
 Authorized Sales of Dacor Diving Equipment  
 — **SAFE FILTERED AIR** —  
 7400 NEBRASKA AVE. Phone 234-1101

### "FIRE ENGINE DEWDROP HOT FLUORESCENT PINK"

#### READ THIS HUMOROUS POEM

#### IN YOUR COPY OF THE

## "SOUTH FLORIDA REVIEW" —

representing

the best student and faculty poets.

Your Copy Will Be Available for

only 25¢ + 1¢ tax March 15, 16, 17

at the U.C. Bookstore or  
**U.C. 223 — THE ORACLE**

## WANTED

... To Buy

Rare

Coins & Stamps

HIGHEST PRICES FOR  
 THOSE WE NEED.

**NORTH GATE  
 COIN & STAMP  
 SHOP**

8927 N. Florida Ave.

(In North Gate Mall)

PHONE 932-8117

## Bay Campus To Feature Marine Science

Bay Campus will host two sessions in marine science from May 1-June 19 and June 22-August 8, according to John C. Briggs, chairman of zoology.

The sessions will be open to students, students in good standing at other universities and qualified adults.

Courses and instructors for the first session include Marine Botany, Clinton Dawes; Marine Geology, Stanley Wimberley; Chemical Oceanography, Dean F. Martin; Physiology of Marine Animals, J. M. Lawrence.

The second session professors and courses will include invertebrate zoology, Frank E. Fried; ichthyology, Briggs, and physiology of fishes, Joe R. Linton.

The courses will be available on a non-conflicting schedule. Each student is allowed two courses a session. Each course will require one full day of laboratory and/or field work plus four hours of lecture a week.

Enrollment in each course is limited to 24. April 1 is the deadline for applications. Two laboratories, fully equipped with seawater systems, are located on Bay Campus, and the services of the Florida State Board of Conservation's 72-foot trawler will be available as well as their reference collection of marine animals and plants located on the site.

### \$50 Award Won By USF Coed In Literature

Renee Gross, 3EE, won second place in the state literary competition sponsored by the Clearwater chapter of the National Society of Arts and Letters.

She was awarded \$50 last Saturday at the Annual Awards Luncheon in the Statter Hilton in Clearwater Beach. Last year's first prize winner in art competition, Richard Lindblom, a graduate student, was invited to exhibit six of his paintings at the luncheon.

First prize winner, Peter Vasile of Daytona Beach, a senior at Florida Presbyterian College in St. Petersburg, received first prize of \$100 for his short story, "The Raid." He will compete in the \$1,000 National Career Award competition to be held in St. Louis during the National Conference in April.

### Merin To Speak On Psychology Tonight At 7:30

The Psychology Club Lecture Series will present Dr. Sidney J. Merin tonight at 7:30 p.m. in Physics 368-369. Merin will speak on "Recent Advances in Psychological Thought." He will also discuss his experiences as a clinical psychologist.

Merin has practiced in Tampa for 10 years.

# NEWS for ENGINEERING GRADUATES

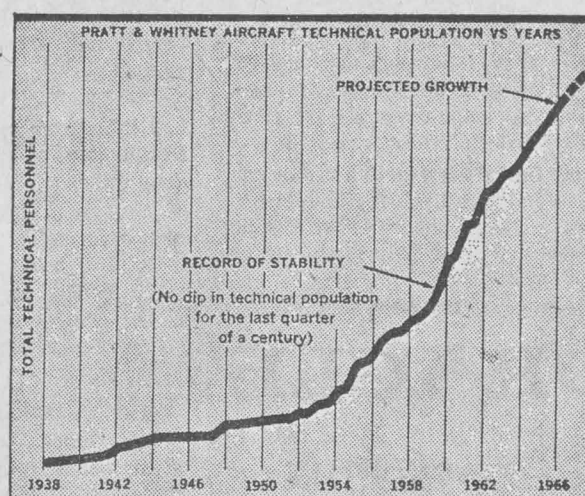
Continued expansion of our military and commercial business provides openings for virtually every technical talent.

As you contemplate one of the most important decisions of your life, we suggest you consider career opportunities at Pratt & Whitney Aircraft. Like most everyone else, we offer all of the usual "fringe" benefits, including our Corporation-financed Graduate Education Program. But, far more important to you and your future, is the wide-open opportunity for professional growth with a company that enjoys an enviable record of stability in the dynamic atmosphere of aerospace technology.

And make no mistake about it . . . you'll get a solid feeling of satisfaction from your contribution to our nation's economic growth and to its national defense as well.

Your degree can be a B.S., M.S. or Ph.D. in: MECHANICAL, AERONAUTICAL, CHEMICAL, CIVIL (structures oriented), ELECTRICAL, MARINE, and METALLURGICAL ENGINEERING • ENGINEERING MECHANICS, APPLIED MATHEMATICS, CERAMICS, PHYSICS and ENGINEERING PHYSICS.

For further information concerning a career with Pratt & Whitney Aircraft, consult your college placement officer—or write Mr. William L. Stoner, Engineering Department, Pratt & Whitney Aircraft, East Hartford, Connecticut 06108.



Take a look at the above chart; then a good long look at Pratt & Whitney Aircraft—where technical careers offer exciting growth, continuing challenge, and lasting stability—where engineers and scientists are recognized as the major reason for the Company's continued success.

SPECIALISTS IN POWER . . . POWER FOR PROPULSION—POWER FOR AUXILIARY SYSTEMS. CURRENT UTILIZATIONS INCLUDE MILITARY AND COMMERCIAL AIRCRAFT, MISSILES, SPACE VEHICLES, MARINE AND INDUSTRIAL APPLICATIONS.



**Pratt & Whitney Aircraft**

CONNECTICUT OPERATIONS EAST HARTFORD, CONNECTICUT

**U  
A**  
 DIVISION OF UNITED AIRCRAFT CORP.  
 An Equal Opportunity Employer



WEDNESDAY, MARCH 15, 1967

### Official Notices

Bulletin Board notices should be sent direct to Director, Office of Campus Publications, CTR 223, no later than Thursday for inclusion the following Wednesday. Time and room schedule of campus organizations meeting regularly are posted in the University Center lobby.

**BLOOD DRIVE:** The annual USF Blood Drive will take place 9 a.m. to 4:30 p.m. Wednesday, March 22, in CTR 252.

**HOSPITALITY COMMITTEE:** of the University Center is available to serve as hosts and hostesses at coffees and receptions sponsored by the Faculty. For information, phone ext. 637, UC Program Office, CTR 156-E.

**FACULTY STAFF LUNCHEON:** 8:11 a.m. and Jim Farmer, Cooperative Education students, will be guest speakers. George Miller will present facts about the program. Noon Thursday, CTR 252. Make reservations by noon today with Mrs. Harriette Anglin, ext. 53.

**APPLICATION FOR EDITORSHIPS:** The Office of Campus Publications, CTR 223, will receive applications through Friday, March 24, for editor, 1968 Aegean; and for editor, The Oracle, for Trimesters I-II-A and B, 1967. These are paid positions. Any graduate or undergraduate student in the University may apply; applications are not limited to journalism students. Qualifications: Minimum 2.0 cumulative grade point and good standing with the University, willingness and time to work up to 20 hours a week, and preferably previous publications experience.

—A. M. Sanderson, Director  
 Office of Campus Publications

### Campus Date Book

**TODAY**  
**CHARM COURSE:** 2 p.m., CTR 47.  
**READER'S THEATRE COFFEE HOURS:** 2 p.m., CTR 252.  
**PANHELLENIC:** 6:30 p.m., CTR 216.  
**ENGLISH CLUB:** 7 p.m., CTR 252.  
**FILM CLASSICS:** "Jules and Jim," (French), 8:30 p.m., BSA.

**THURSDAY**  
**SENIOR SATIRE REHEARSAL:** 6 p.m., BSA.  
**SA LEGISLATURE:** 7 p.m., CTR 252.

**FRIDAY**  
**SENIOR SATIRE REHEARSAL:** 6 p.m., BSA.  
**WAY OUT COFFEE HOUSE:** 7:30 p.m., CTR 248.

**MOVIE:** "The Chalk Garden," 7 and 9:45 p.m., FAH 101.

**SATURDAY**  
**CHILDREN'S FILM SERIES:** 10:30 a.m., FAH 101.

**SENIOR SATIRE REHEARSAL:** 6 p.m., BSA.  
**MOVIE:** "The Chalk Garden," 7 p.m., FAH 101.

**COLLEGE OF ENGINEERING DINNER:** 7 p.m., CTR 255-6. Dance, 9 p.m., CTR 248.

**MOONLIGHT CRUISE:** 8 p.m. - midnight, Tampa docks.

**SUNDAY**  
**ST. PATRICK'S AUTOCROSS:** noon, FAH 101.

**SENIOR SATIRE REHEARSAL:** 6 p.m., BSA.  
**MOVIE:** "The Chalk Garden," 7 p.m., FAH 101.

**MONDAY**  
**BRIDAL SHOW:** all day, CTR 252.  
**IFC RUSH:** 7 p.m., CTR 252.

**ACCOUNTING CLUB DINNER:** 7 p.m., CTR 248.

**TUESDAY**  
**SENIOR SATIRE EXHIBIT:** all day, CTR lobby.  
**WORLD AFFAIRS CLUB:** "Mexico," 7:30 p.m., CTR 248.

**ALL WEEK**  
**SENIOR SATIRE EXHIBIT:** Lobby, CTR.

### Placement Services

The organizations listed below will be interviewing on campus on the dates indicated (check with Placement, ADM 280, for interview locations). For complete descriptions and to sign for an interview, see Placement Office, ADM 280, ext. 612.

**THURSDAY, MARCH 16:** Electronic Communications Inc., Engineering EE, and ME; EE and ME Engineering.  
**WEDNESDAY, MARCH 22:** First National Bank of Tampa; Management Trainees; Business Administration; Corn Products Sales Company (Best Foods Division); Sales training; program in sales management; all fields.  
**THURSDAY, MARCH 30:** Washington National Insurance Company; Group sales; all fields.

### Concerts, Lectures Exhibitions

**CHEMISTRY LECTURE:** Dr. Roderic W. Griffin Jr., New College, "122) Metacyclophanes," 2 p.m. today, CHE 105.

**LECTURE:** Dr. Julian Harri, Yale Professor of Philosophical Theology, "William Faulkner's View of American Life," sponsored by the University Religious Council, Monday.

**EXHIBITION:** "Drawings and Collages" from the Richard Brown Baker Collection. Tuesday-Thursday, through April 6, Library and Teaching Galleries.

**FACULTY EXHIBITION:** Jeffrey Kronsoble, Wednesday-Sunday, through April 6, Theatre Gallery.

**CONCERT:** University - Community Symphony Orchestra; tonight at 8:30, Theatre. Reserved seat tickets required, no charge.

**SEMINAR FOR JUVENILES:** Also luncheon; Thursday, 9 a.m. through 5 p.m., CTR 248.

**ARTIST SERIES:** Fine Arts String Quartet; Thursday, 8:30 p.m., Theatre, (re-

### Education Placement

The following school systems have scheduled interviewing visits on-campus on the dates indicated. Other schools will be scheduling dates in the near future. Phone Placement AND 280 (Ext. 612) for additional information and to phone appointments to schedule interview.

**FRIDAY, MARCH 17:** Prince George's County Schools, Upper Marlboro, Md., 9 a.m.-noon, ADM 241; President's Office.  
**THURSDAY, MARCH 23:** Broward County Schools, Fort Lauderdale, Fla., 1:30-3 p.m., Engineering Building; Pinellas County Schools, Clearwater, Fla., 2-3 p.m., Engineering Building.

**THURSDAY, MARCH 30:** Lee County Schools, Fort Myers, Fla., Orange County Schools, Orlando, Fla., 2-3 p.m., Engineering Building; Manatee County Schools, Bradenton, Fla., 1-3 p.m., Engineering Building; Volusia County Schools, Deland, Fla., 2-4:30 p.m., Engineering Building.

**TUESDAY, APRIL 4:** Arlington County Schools, Arlington, Va., 2-6 p.m., Engineering Building.

**THURSDAY, APRIL 6:** Sarasota County Schools, Sarasota, Fla., 2-9 p.m., Engineering Building.

**TUESDAY, APRIL 11:** Pasco County Schools, Dade City, Fla., 10 a.m.-3 p.m., ADM 241, President's Office.

**THURSDAY, APRIL 13:** Palm Beach County Schools, West Palm Beach, Fla., Dade County Schools, Miami, Fla., 2-9 p.m., Engineering Building.

**Co-Op Placement**

Students interested in Co-operative Education Training assignments for Trimester III or for the first quarter September, 1967, should apply in ENG 27 at the earliest date possible. These are paid training assignments where students are placed in areas of professional interest. New listings for Trimester III include:

**SUPERMARKETS GENERAL CORP.** — Openings for majors in most areas for management trainee assignments in New Jersey, Delaware, New York, Pennsylvania, and Connecticut.

**NATIONAL PARK SERVICE** — Desires co-op applicants with majors in art, history, architecture, or engineering.  
**25 MAJOR EMPLOYERS** seeking students with business administration majors, especially preferred are those in accounting, economics, and management. Locations in Tampa, Florida, and other Eastern cities.

**OTHER OPENINGS** in chemistry, accounting, management, physics, math.

**WUSF-TV Channel 16**

**TODAY**  
 5:00 Swedish Scene  
 5:30 Miss Nancy's Store  
 6:00 Quest  
 6:30 Science Reporter  
 7:00 Bridges  
 7:30 The Stock Market  
 7:40 Call the Doctor  
 8:00 Charlie Chaplin  
 8:30 Nine to Get Ready  
 9:00 Profiles in Courage

**THURSDAY**  
 5:00 Arts Unlimited  
 5:30 Miss Nancy's Store  
 6:00 Space Flight  
 6:30 Insight  
 7:00 Achievement '66  
 7:30 The Stock Market  
 8:00 You and the Law  
 8:30 Alcoholics are People  
 9:00 I Spy

**FRIDAY**  
 5:00 Desilu Playhouse  
 5:30 Brother Buzz  
 6:00 Miss Nancy's Store  
 6:30 Space Flight  
 7:00 U.S. State Department Special  
 7:30 The Stock Market  
 7:40 Grow and Show  
 8:00 Enfoque (Spanish News Roundup)  
 8:30 Forum (Spanish)  
 9:00 Teatro Frances (Spanish)

**MONDAY**  
 5:00 Functional English (CB 102)  
 5:30 Miss Nancy's Store  
 6:00 Compass  
 6:30 Math  
 7:00 The Stock Market  
 7:40 You and the Law  
 8:00 Victory at Sea  
 8:30 You Are There  
 9:00 Desilu Playhouse

**TUESDAY**  
 5:00 Films for Freedom  
 5:30 Miss Nancy's Store  
 6:00 Discovering America  
 6:30 Forum (Spanish)  
 7:00 Math  
 7:30 The Stock Market  
 7:40 Your Vote in Action  
 8:00 I Spy  
 8:30 Teatro Frances  
 9:00 Cineposium

**WEDNESDAY**  
 5:00 You Are There  
 5:30 Miss Nancy's Store  
 6:00 Compass  
 6:30 Math  
 7:00 The Stock Market  
 7:40 You and the Law  
 8:00 Victory at Sea  
 8:30 You Are There  
 9:00 Desilu Playhouse

**THURSDAY**  
 5:00 Films for Freedom  
 5:30 Miss Nancy's Store  
 6:00 Discovering America  
 6:30 Forum (Spanish)  
 7:00 Math  
 7:30 The Stock Market  
 7:40 Your Vote in Action  
 8:00 I Spy  
 8:30 Teatro Frances  
 9:00 Cineposium

**FRIDAY**  
 5:00 Desilu Playhouse  
 5:30 Brother Buzz  
 6:00 Miss Nancy's Store  
 6:30 Space Flight  
 7:00 U.S. State Department Special  
 7:30 The Stock Market  
 7:40 Grow and Show  
 8:00 Enfoque (Spanish News Roundup)  
 8:30 Forum (Spanish)  
 9:00 Teatro Frances (Spanish)

**MONDAY**  
 5:00 Functional English (CB 102)  
 5:30 Miss Nancy's Store  
 6:00 Compass  
 6:30 Math  
 7:00 The Stock Market  
 7:40 You and the Law  
 8:00 Victory at Sea  
 8:30 You Are There  
 9:00 Desilu Playhouse

**TUESDAY**  
 5:00 Films for Freedom  
 5:30 Miss Nancy's Store  
 6:00 Discovering America  
 6:30 Forum (Spanish)  
 7:00 Math  
 7:30 The Stock Market  
 7:40 Your Vote in Action  
 8:00 I Spy  
 8:30 Teatro Frances  
 9:00 Cineposium

**WEDNESDAY**  
 5:00 You Are There  
 5:30 Miss Nancy's Store  
 6:00 Compass  
 6:30 Math  
 7:00 The Stock Market  
 7:40 You and the Law  
 8:00 Victory at Sea  
 8:30 You Are There  
 9:00 Desilu Playhouse







# Discovery! Gold Mine Found In USF Library

By ANN WILSON  
Correspondent

A new pocket of gold has been discovered at USF! The main vein is easily accessible to students and staff in the Library basement.

Educational Resources may prove a real pot of gold to teacher - aids and interns in the county in the form of various audio - visual materials.

EDUCATION MAJORS may

capitalize on other tributaries of this vein. In the center mine is a sprawling rack with cylinders filled to overflowing with maps of every size, shape, and almost every subject imaginable.

These are mostly checked out by staff as an indefinite (permanent) loan and are seen each year only on the shelf inventory kept by the librarians, but, once in a while, when a student requests it, a

map can be checked out to a student with very little difficulty.

This section of the library also stocks records ranging in subject from comedy to opera. These records (excepting those in back of the check-out desk marked classroom records by the professors) can either be checked out by students for a one week period or played on specially equipped phonographs (they have earphones) in the basement.

AN ELEMENTARY education major can, with a little digging into the stacks of brightly - colored child - oriented books, find something to keep even the most mischievous child quiet.

Here also is the hanging file loaded with tips on curriculum organization, periodicals, lesson plans, bulletins, and supplementary materials.

There is also a maze of films, filmstrips, and films with coordinated records which can be previewed by education students for a particular class in the special viewing room set aside for this purpose.

When the student decides which film he wants to show to his class, he can reserve a film projector, a projector stand, a screen and even a man from Educational Resources to run the machine! Off campus people must rent projector or films from Educational Resources as must students who wish to show films off campus.

## Pre-School, Art Courses Offered

Nursery school and kindergarten children will have an opportunity to take two evening short courses here through Thursday.

Courses offered in "Art" and "Working With the Pre-School Child's Family" will place special emphasis on practical application and skills necessary for successfully teaching pre-school age children.

The art class will meet at 7:30 p.m. for five Thursdays beginning this Thursday in Fine Arts-Humanities 133, and the pre-school child's family class will meet at 7:30 p.m. for five Tuesdays. It began last Tuesday in Fine Arts-Humanities 133.

Mrs. Claudia Silas and Mrs. Medora Brown will teach the two courses, which are being offered by the Center for Continuing Education in cooperation with the College of Education and the Hillsborough County Pre-School Association.

The courses are partially financed through a grant under the Higher Education Act of 1965.

Information is available from the Center for Continuing Education, ext. 185.

## Engineering Ball Saturday At 9

The Engineering College Association will sponsor a semi-formal dance for engineering majors Saturday, at 9 p.m. in the University Center ballroom. A local band will provide music.

Tickets are free and are being given to upper division engineering students.

## Finance And Accounting Has Payroll Problems Too

There are worse jobs than shuffling through \$790,000 a month.

USF Director of Finance and Accounting Robert E. Richmond says that his office must allocate \$750,000 to 1,350 staff members and \$40,000 to 750 student assistants each month of the school year.

THE PROBLEMS are ones of procedure and timing and trying to coordinate them. Students are paid on the tenth working day of the month for the previous month's work. Faculty and staff members are paid on the last day of the month.

Problems usually arise in paying students because time sheets from the various departments are usually late in coming in. Then they must be assembled and checked for accuracy in rates and hours. Payroll registers must then be punched by the data processing department.

Pay checks are then run through the data processing

## USF Hospitality Committee Aids, Guides Visitors

Help is available for visitors who are lost at USF. A guide may be obtained for group tours through the campus maze from the office of Rena Ezell, University Center program council adviser.

When Mrs. Ezell receives a call of this type, she relays the information to Carol McCoy, the Chairman of the Hospitality Committee.

MISS MCCOY takes the information and any particular interests of the group into consideration.



USF Photo

## Over Where?

Members of this visiting group seem to have as much interest in their guide as they do in the buildings of USF. The group is being shown at the University Center by their hospitality guide.

## Girls Get Higher Grades: Brains Or Manipulation?

By MONTSY ALVAREZ  
Correspondent

Are females the more intelligent sex or do they just know how to manipulate for higher grades?

This is a question that has puzzled educators for a long time and which has led universities, including USF, to investigate the question.

PROMPTED BY a study conducted by Pennsylvania State University, USF began an investigation of its own about a year-and-a-half ago.

Under the guidance of Edward Caldwell, director of Evaluation Services, six of the eight courses in the College of Basic Studies were checked over a two year period.

The sample included 167 sections drawn from the six courses consisting of English, behavioral science, biology, physical science, math, and American Idea.

HUMANITIES courses, ex-

perimental courses, and courses where no instructor grade was given were excluded. The question was whether a significantly higher proportion of female students receive higher instructor grades than do males.

Twenty - four comparisons were made between instructor grades and final exam grades. Grades were examined in terms of the sex of the student and instructor.

BUT BECAUSE of the scarcity of female instructors in many courses the analysis based on the instructor's sex, was possible only in two courses: English and behavioral science.

The procedure included tabulating examination grades and instructor grades by course, term, and student sex. The mean for each course was then computed between instructor grade and examination grade to see if either sex gained an advantage on instructor grades.

From within this analysis

students showing a discrepancy of two letter grades between the instructor grade and the examination grade were singled out for further investigation.

RESULTS OF the tests were as follows: Of the 24 comparisons: Coeds received higher grades 18 times while males only six. It also showed that the male advantages were small while the female advantages were considerably larger.

In the comparison of the two courses where the deviance between men and women instructors favored taken, the results showed no overall indication that either sex had a distinct advantage.

In the English courses women instructors favored men students three out of four times while men instructors favored women students three out of four times. In Behavioral Science just the opposite was the case: women instructors favored women students three to four while men instructors favored men students three to four.

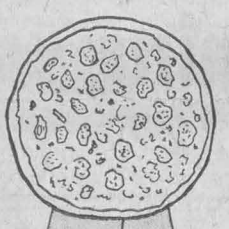
FINALLY, IN the analysis of the two letter grade discrepancies, tests confirmed previous speculations that females have a distinct advantage.

The next question is why? Only guesses can be made. The report states that, "one is never certain about the criteria instructors use in assigning final grades, it is not unreasonable to assume that some weight is given to such student traits as: punctuality of turning in assignments, neatness of work, attendance, and attitude.

Perhaps these behaviors are more typical of female students than males, and this, not physical attractiveness, is the why?

Whatever the reason, general agreement between these findings and the history of related studies leaves little doubt that when bias occurs in a marking system it is likely to favor the coed.

COMING SOON!  
On or About  
April 1st



- Take Out Service
- Dining Room

10206 N. 30th St.

## NOW OPEN! 8 BALL LOUNGE

Pool, Snooker and Shuffleboard

10030 - 30th STREET N.  
(Next to University Exchange Bookstore)

## Got all your BUTTONS?

Get on the button with these timely buttons that are right on the button!

1. Peanut Butter is Better Than Pot
2. I Am A Human Being, Do Not Fold, Spindle or Mutilate
3. Support Your Local Hobby
4. Apple Pie Can Make You Stupid
5. The Governor of Alabama is a Mother
6. Thumbs up or down (reversible) picture
7. Betty
8. Button
9. Unbutton
10. San Buttons
11. Like Older Women
12. Marcel Proust is a Yenta
13. God is Alive but just does not want to get involved
14. If It Feels Good I'll Do It
15. Jewish Power
16. Irish Power
17. Italian Power
18. Draft Beer Not Students
19. Come to Middle Earth
20. Mozart Forever
21. Batman Loves Robin
22. Sex Before Finals
23. HIGH
24. Support Mental Health or I'll Kill You
25. Save Water Shower With A Friend
26. If It's Liquid ... I'll Drink It
27. Gandhi For President
28. Roommate Wanted
29. Reality is A Crutch
30. Keep the Faith, Baby
31. Make Love Not War
32. Bring Back Paganism
33. Ronald Reagan for Fuhrer
34. Mary Poppins is a Junkie
35. Frodo Lives
36. Socrates Eats Hambock

Buttons ea. 29¢. Orders under \$1.00 please enclose 15¢ for handling & postage. \$ for \$2.00 25 for \$5.00 50 for \$8.50 100 for \$16.00

Horatio Buttons, Inc.  
27 West 86th St., New York, New York 10024

Please send the numbers and quantity of each indicated

NAME \_\_\_\_\_

ADDRESS \_\_\_\_\_

1 2 3 4 5 6 7 8 9 10

11 12 13 14 15 16 17 18 19

20 21 22 23 24 25 26 27 28

29 30 31 32 33 34 35 36

Send catalog listing hundreds of other buttons & wild stuff.

## Scientific Prose Translates Into Purple Sea Urchin Gut

By POLLY WEAVER  
Feature Editor

"Role of the Gut . . ." Is that any name for a scholarly scientific treatise?

## World Affairs To Sponsor Mexico Night

The World Affairs club is sponsoring a Mexican program Tuesday at 7:30 in the CTR Ballroom featuring a Mexican dance, panel discussion and display of Mexican artifacts. Mexican food will be served as refreshments.

Topic for the panel is political culture, politics and culture of Mexico. Panel members will be Dr. Alfonso Gonzalez, chairman of geography Dr. Charles Arnade, professor of American Idea, and Dr. Robert H. Fuson, professor of geography.

Students and staff have been invited to the program, which is open to the public. There is no admission charge.

LAWRENCE starved, or starved and refed, sea urchins from Yankee Point, Calif. Body fluids were analyzed and perivisceral fluid was drained from the urchin's body cavity by removing the Aristotle's lantern.

This may still be Greek to some laymen, but there may be hope that the language is coming closer to home.

## MOTOROLA 8 TRACK CAR STEREO TAPE CARTRIDGE PLAYER

Come in for a FREE demonstration of

## MOTOROLA Vibrasonic\* sound system FOR CARS

- Adds reflected sound energy to music for a live, vibrant sound.
- Attaches to any 12-volt negative-ground car radio.

\*Trademark of Motorola Inc.

CONTRACT TV Service  
9554 Florida Ave.  
Ph. 932-9705

## Roommates 'Ham' It Up World Wide From Alpha

John Deegan, 2CB, from Miami, and Jeffrey Harrow, 1CB, from Miami Beach, have brought their ham radios to USF.

The roommates, who live on the fourth floor of Alpha, have filled their room with an accumulation of radio equipment.

Both are Speech - Broadcast majors and are active in the USF Amateur Radio Club. Deegan served as president and Harrow is the Civil Defense director.

Deegan and Harrow have been licensed by the Federal Communications Commission (FCC) for about four years. They had to pass an examination requiring knowledge of Morse code, radio law, and

radio theory. Broadcasting from a lounge in Alpha, they recently talked for about 20 minutes with an American Air Force pilot flying over the Gulf of Tonkin in Vietnam.

## LUCILLE'S DRIVE-IN

Featuring . . .  
Oak Smoked  
Barbecue Ribs  
and Chicken

It's YUMMY GOOD  
Corner of 29th &  
Lindell Avenue



Our Oxford Shop's the place  
for LEVI'S GUYS to pick

## CASUAL SLACKS LEVI'S® STA-PREST®

They're the slacks with the famous fit, here now in two new Spring fabrics and a whole range of colors. In 65% Dacron polyester/35% cotton poplin, or 50% Fortrel polyester/50% combed cotton Spectrum cloth, both with non-stop Press-Free finishes.

Prep sizes, Poplin	\$6	Young Men's sizes, Poplin	\$7
Prep Spectrum Cloth	\$7	Young Men's Spectrum Cloth	\$8
Jr. Boys, sizes 6-12	\$5	Jr. Boys Spectrum Cloth	\$6
Huskies, 26-36	\$7		

Oxford Shop — 1st floor



If you're 16-22 you can be a Young Ambassador. Tell the people you meet about America while traveling in the friendliest way: via bicycle and train, staying in Youth Hostels as unique as a chateau, as simple as a university dormitory. Travel in small co-ed groups with a trained American Youth Hostels leader as chaperon who'll take you to famous and unostentatious places. You'll get a travel wardrobe from Lady Wrangler's or Mr. Wrangler's Young Ambassadors Collection and you'll be supplied with a bike and saddlebags.

Go to the store nearest you that sells Lady Wrangler or Mr. Wrangler Sportswear. Look for the Young Ambassadors Collection and get your application form. Scholarship applications close May 5, 1967.

Lady Wrangler Sportswear, 1407 Broadway, New York, N.Y. 10018. Mr. Wrangler Menswear, 350 Fifth Avenue, New York, N.Y. 10001.

Win a free 6-week all-expense-paid Young Ambassador tour of Europe.  
Lady Wrangler® and Mr. Wrangler® Sportswear will send 90 young people abroad this summer as Young Ambassadors traveling with American Youth Hostels.



American Youth Hostels





## No, It's Not The Epiphany Cross

USF freshman Alan Stetler isn't diving for a cross as they do in Tarpon Springs during the Greek Orthodox Church's Epiphany ceremony. He's simply finishing his lap in the butterfly section of the I-M event in the meet against FSU March 4. The cross is at the end of each lane so that the swimmers can tell when to make their turns. The sun just hap-

pened to be shining the right way when Oracle photographer Allan Smith snapped this shot of Stetler. The picture, in the form of a close-up of Stetler, was run last week, but we didn't discover the cross until later when we looked at the negative a little closer.

Photo by Allan Smith

## Brahman Baseball Statistics

	g	ab	r	h	2b	3b	hr	rbi	sac	hp	bb	so	po	a	e	avg.	fld.
Gray	2	2	2	1	1	0	0	0	0	0	0	0	0	0	1	.500	.000
Jolinski	5	5	0	2	0	1	0	2	0	0	1	2	1	0	1	.400	.500
Ulmer	6	26	0	10	4	0	1	7	0	0	1	8	11	20	6	.385	.838
South	6	24	4	8	1	0	1	9	0	0	2	4	9	0	0	.333	1.000
Fisherman	3	9	2	3	0	0	0	0	1	0	0	2	3	0	0	.333	1.000
Macki	3	6	1	2	0	0	0	1	0	0	0	4	0	4	1	.333	8.00
Trapp	2	3	0	1	0	1	0	0	1	0	1	1	1	3	0	.333	1.000
Schenzinger	6	13	0	4	1	0	0	1	0	0	2	2	30	1	1	.308	.969
Richardson	4	11	2	3	0	0	0	0	1	0	5	2	8	0	2	.273	.800
Garcia	6	23	0	6	0	0	0	1	0	0	2	3	39	10	1	.261	.980
Sakkis	3	4	2	1	0	1	0	0	0	0	0	0	0	0	1	.250	.000
Fischer	6	9	1	2	0	0	0	2	1	0	3	0	22	1	1	.222	.958
McGary	6	25	9	5	2	1	1	5	1	0	3	4	15	15	5	.200	.857
Heykens	5	10	1	2	0	0	0	1	0	0	3	2	5	0	0	.200	1.000
Sherzer	2	5	3	1	0	0	0	0	1	0	0	0	0	7	0	.200	1.000
Stuckie	6	16	5	3	1	0	0	3	1	0	4	1	6	0	2	.188	.750
Miguel	3	6	1	0	0	0	0	0	0	0	1	1	3	3	3	.000	.857
Kelly	1	1	0	0	0	0	0	0	0	0	1	0	0	1	0	.000	1.000
Shaw	1	1	0	0	0	0	0	0	0	0	0	0	0	0	0	.000	.000
Bledsoe	1	0	0	0	0	0	0	0	0	0	0	0	0	0	0	.000	.000
Ritz	2	0	0	0	0	0	0	0	0	0	0	0	0	1	0	.000	1.000
Cave	1	0	0	0	0	0	0	0	0	0	0	0	0	1	0	.000	1.000
Totals	6	199	37	54	10	4	3	32	7	1	29	38	153	69	23	.271	.914

	g	gs	gt	cg	w	l	pct	ip	h	r	er	bb	so	wp	blk	hbp	bfp	sav	e.r.a.
Scherzer	2	2	0	0	2	0	1.000	12½	5	4	0	5	9	2	0	0	52	0	0.00
Trapp	2	2	1	1	1	0	1.000	10½	3	2	1	2	8	0	0	0	39	0	0.75
Sakkis	3	0	2	0	1	0	1.000	8½	9	2	0	0	8	0	0	0	35	0	0.00
Macki	3	1	1	0	0	0	.000	14	9	7	5	10	10	1	0	0	61	0	2.86
Kelly	1	0	1	0	0	0	.000	3	1	1	0	2	3	1	0	0	13	0	0.00
Ritz	2	1	0	0	0	2	.000	2	6	8	4	5	0	1	0	0	18	0	16.00
Cave	1	0	1	0	0	0	.000	½	1	0	0	0	0	0	0	0	3	0	0.00
Totals	6	6	6	1	4	2	.667	51	34	26	10	25	38	5	0	0	221	0	1.63

# South, Ulmer Spark USF To First Baseball Sweep

By JEFF SMITH  
Sports Writer

Dana South, Art Ulmer, and top-notch pitching led USF to its first baseball sweep in the two-year history of the diamondmen.

Friday's home game against the Tampa Spartans proved to be disastrous for Dan Sikes' team as Ulmer ripped two singles and a double, and South collected a record seven rbi's on a homer and two singles.

Hubert Wright's Brahman open a 10-game homestand Friday night, 7:30 against North Carolina's Saint Andrews at Tampa's Plymouth Field. USF will host the team in a doubleheader Saturday, starting at noon on the new USF diamond.

**RIGHT-HANDER** Marv Sherzer stopped the Spartans on two singles before tiring in the sixth. Lefty Rick Kelly finished up for Sherzer, and the former Hillsborough star held the Tampa nine to an unearned run in the eighth.

Ulmer started South Florida's third-inning rally, doubling to leftfield and scoring Sherzer with the game's first run.

South then ended an 0-9 slump, driving in two more tallies with a sharp single to center. He scored on a throwing error to third base. USF led 4-1 after three innings.

Larry McGary blasted a long double to leftfield, leading off the fifth. McGary's shot travelled an estimated 375 feet and would have cleared the fence, which is to be installed before next week.

**AFTER A WALK**, Ulmer singled to left, loading the bases for South. The big right-fielder unloaded a single, knocking in two more Brahman runs. Augie Schenzinger drove in South.

South's big blast came after consecutive singles by Howie Fishermen and Ulmer. The Brahman topped the victory with four runs on singles by John Jolinski and Jim Fischer.

Tampa, 0-3, has now allowed its opponents 35 runs and has not batted in a run this season. Sikes' Spartans have collected only five hits.

THE ORACLE  
**SPORTS**  
6 — March 15, 1967, U. of South Florida, Tampa

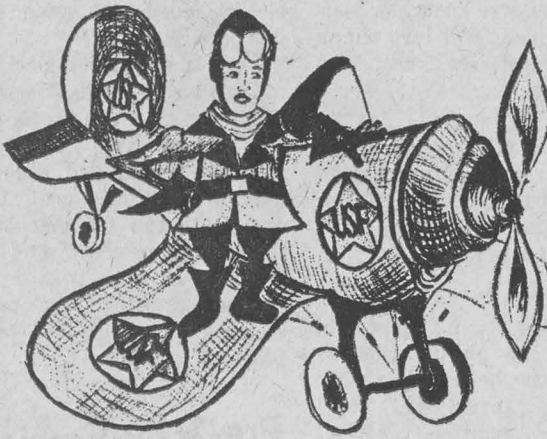
scoring single in the seventh and a bases-loaded walk in the eighth. Fireballing John Sakkis ended the rally, striking out the Southern first baseman. Richardson opened the USF

Neither team was able to

(Continued on Page 7)

CAMPUS UNIVERSITY APARTMENTS  
OVERLOOKING USF  
**1-2-3 BEDROOMS**  
Furnished or Unfurnished  
30 St. (No. of Fowler) 932-6133

Be a Magnificent Man in a Flying Machine!



LEARN TO FLY!

Introductory Lesson

**ONLY \$5**

Special USF Offer

Ecco Flight Training

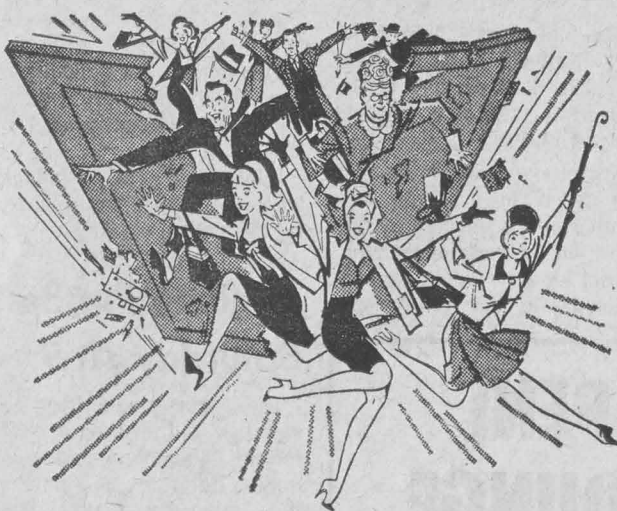
can get you off the ground and into the air for your own pilot's license for

ONLY \$35 A MONTH

- Certified by the Federal Aviation Agency
- We use Cessna 150's and Piper Cubs
- Ground School, 60 hours
- Actual solo flying, 20 hours
- Dual flight training, 18 hours
- All necessary materials provided
- Radio-telephone license, FAA fees included

**Ecco Flight Training**  
Call Now — 988-4727

## IS THIS SPACE TAKEN?



## WHO IS OUR LEADER??

Big John??  
Big Herbie??  
Fred Frat??  
The Bearded Wonder??

Peter Prof.??  
Andy Andros??  
Splash Dwane??  
The . . . . .??

FOR 25¢ AND A GOOD SENSE OF HUMOR

Find out at

**The '67 Senior Satire**

March 21 & 22  
Business Auditorium

## SIZING 'EM UP by Lee Sizemore

We're not a salesman for Sports Illustrated or Sport Magazine, even though the following may seem like it. If you do take either of the publications, then you'll probably run into conflicts in stories, such as the ones about the National Basketball Association's temperamental giant, Wilt Chamberlain.

As reported in this column some time back, Chamberlain had settled his quarrels with Coach Alex Hannum and this was the reason for the success of the Philadelphia 76'ers this season. This info was in a mid-winter edition of Sports Illustrated.

Ain't so according to the current issue of Sport Magazine. Seems as if they had heard the same story, but the underlying drive for Chamberlain's style of play being changed is because he wants the NBA title more than anything. Heretofore, he has been denied the honor of playing on a championship team, due mainly to the efforts of Bill Russell and the Boston Celtics (who have won the title each year that Chamberlain has been in the league).

**THE STORY WAS** not all that, though. The "Sport Special" for this month included some interesting statistics on Wilt. For a long time, people have been saying, "He's got to be bigger 7-1 1-16". (Or something like that.) Well, sports fans across the country (and USF, too), you're right. New evidence has shown that Chamberlain could be taller than even 7-4 (that's feet and inches, girls). A door in the Detroit dressing room is seven feet, four inches tall and Wilt has to stoop every time he walks through it.

Another ditty from Sport has Chamberlain admitting to at least 290 pounds in weight. He is listed on the Philadelphia roster as 250. Again reporters across the country say he must weigh more.

**AT LEAST**, none of the small (6-4 or smaller) guards around the NBA are not willing to try to tie up Wilt when he starts to stuff one. They're afraid they might go through the basket with the ball.

## Faculty Tennis Club Organizing For Faculty, Staff, Families

USF faculty members are organizing a faculty-staff tennis club. The club is open to all faculty and staff personnel and their families.

Interested persons should call Phillip Ortwein, 935-0592, or Spafford Taylor, 988-4347, after 6 p.m. Any additional information can be obtained from either Ortwein or Taylor.

**Kirby's**  
TAMPA

IF  
OUR LABELS  
COULD ONLY TALK

"I've been attached to my suit for quite a spell. I'm taken to all the best places, and I go out frequently. Gosh, I get a lot of wear but I feel almost as young as the day I was purchased from Kirby's, suit attached. Incidentally, the suit wears well, too!"

OPEN MONDAY AND FRIDAY 'TIL 9 P.M.

**Kirby's**  
MEN'S WEAR  
1707 S. Dale Mabry  
211 E. Arctic  
(Next to North Gate)



## Brahman Netmen Win Match No. 1

USF's men's tennis team won their first match of the season last Friday night over Saint Leo College 9-0 on the USF Andros courts. The Brahman dropped their fifth match, to Miami-Dade Junior College, 8-1, on Saturday.

The Brahman host St. Andrews College for two matches this weekend. The Friday night match will begin at 6:30 on the Andros Courts with the Saturday round scheduled for 1 p.m. on the PED courts.

The Saint Andrews baseball team will also be on campus for a weekend series with the Brahman.

## WUSF-FM To Broadcast Friday Game

USF's baseball game this Friday with St. Andrews College, will be carried live on WUSF radio (89.7FM) starting at 8 p.m.

Robert A. Goldstein and Edward M. Silbert, both of the USF history department will be the announcers for the game.

## Intercollegiate Weekend Set

FRIDAY, MARCH 17

6:30 p.m. Men's Tennis vs. St. Andrews (N.C.), Andros Courts.

8 p.m. Baseball vs. St. Andrews (N.C.), home.

SATURDAY, MARCH 18

10 a.m. Women's Tennis vs. Florida, 10 a.m., Gainesville.

1 p.m. Men's Tennis vs. St. Andrews (N.C.), PED Courts.

Noon Baseball vs. St. Andrews (N.C.), home, doubleheader.

1 p.m. Golf vs. Manatee Junior College, Sarasota.

## Vapors Overhanging USF Are From Physical Plant

By JERE JAMES  
Correspondent

The large white cloud of vapor which usually hangs over USF's power plant on cold mornings doesn't pollute the air.

According to Superintendent of Utilities George Stevens, the cloud is merely water condensation caused by a difference in air temperature and the temperature in the cooling towers.

However we can expect to see the cloud grow as the plant expands in an effort to serve our fast growing University.

Stevens said, "The Utilities Plant growth must be kept a minimum of two years ahead of the University due to the length of time required for awarding contracts and constructing the facilities."

The plant, operated by 19 full time employees and 4 part time students, is presently capable of producing 5600 tons of air conditioning per hour. Stevens said, "The amount of air conditioning needed varies depending upon the outside temperature." "On a day when the temperature reaches 75 degrees, the University will use approximately 1800 tons per hour."

The greater the load the more efficiently and cheaper the plant can operate. Stevens said, "The cost is approximately seven tenths of a cent per ton hourly."

Plant shut down occurs once a year for about eight hours so that maintenance work can be done. According to Stevens, this is usually done late at night and most people aren't even aware that their air conditioning is off.

## Fall Student Orientation Plans Starting

Plans are now underway for the Orientation Program for incoming freshmen and transfer students next fall.

Tom Schulz, 3PS, is chairman of the Steering Committee which will select orientation leaders and plan the programs. Also serving on the committee are Edie Baker, 2CB; Rose Marie Cali, 3CB; Rosaline Hall 3CB; Terry Hightower, 3UB; Barbara Hofer, Leslie Horton, 3FR; Carolyn Kirby, 3CB; Lois Perez, 2CB; and Jim Serris, 1CB.

Applications are available until Friday in the Students Organizations Office University Center 156-E; Office of the Dean of Men, Administration 157; and CTR Information Desk.

## CTR Moonlight Cruise In Clearwater Saturday

A moonlight cruise and dance will be held on the ship, American Patriot, in Clearwater, March 18. The cruise is being sponsored by the University Center, according to Dennis Moreno, chairman of the recreation committee.

Admission to the cruise is \$3 per couple, with music being sponsored by the "Bottle of Blue." The ship will leave the Clearwater Marina at 8 p.m. and return around 11:45.

A limited number of tickets are on sale now at the CTR desk.

Additional tickets to include a round trip bus ticket are available at \$1 per couple. A bus will leave the CTR at 7 p.m. and return before 1 a.m.

## USF Staff Is Out For Blood On Wednesday

A blood drive sponsored by the Southwest Florida Blood Bank will be held next Wednesday from 9 a.m. to 4:30 p.m. in University Center 252. Blood will go in the blood bank for University staff.

One half of the blood donated to the bank will be given to the new blood bank for hemophiliacs in Tampa. Students who wish to donate their blood may designate it for the hemophilia bank.

The University blood bank now in operation provides blood for all full time staff members and their immediate families.

## Donald J. Saff Named Chairman Of Visual Arts

Donald J. Saff, associate professor of art, has been named chairman of the Department of Visual Arts effective this summer.

He will succeed Harrison Covington, who will become associate dean and director of the USF Fine Arts Division. Saff taught at Queens College, State University College in New York and Columbia University Teachers College before joining the USF faculty in 1965.

He received a Fulbright grant for study in Italy in 1964, and has had his art works widely exhibited around the country. He holds four degrees, including an Ed.D. degree from Columbia University Teachers College.

## USF Veterans Club Meeting Set Today

The USF Veterans Club will hold its final organizational meeting today at 2 p.m. in the University Center 256. Election of officers is scheduled. All veterans with two or more years of service in any branch of the armed forces are invited to attend. Coffee will be served.

# USF-Gator Coeds To Clash



USF Photo

## Tennis Twins Win Again

USF's women's tennis twins Tish and Jacquie Adams, won again last weekend in both singles and doubles as they led the coed Brahman to their fifth dual match win of

the year. The Adams twins, now sophomores, have been joined on the USF squad by sister Gwenda, a freshman. The girls hail from South Carolina.

## Diamonders Sweep Two, South Collects 8 RBI's

Continued from Page 6)

half of the inning with a walk. Fisherman singled the second baseman to third, and it looked as though the Brahman would score, since no one was out.

PITCHER JOHN SAKKIS drilled a shot right at Moe third baseman Don Sabatini, and the Southern star tagged Richardson for the first out. McGary flied out to center, and the scoring opportunity looked slim.

Doug Heykens hit a sinking pop to shallow centerfield, but the Southern outfielders lost the ball in the sun and Fisherman scored.

Brahman shortstop Art Ulmer then continued his assault on enemy hurlers, driving a blast to the leftfield wall. Sakkis and Heykens scored on the shot, but the big leftfielder was called out for missing third base.

Sakkis had no trouble retiring the Mocs in the bottom of the 12th. The big right-hander

fanned six in the best relief job by a Brahman this season.

South Florida pitching has not allowed an extra-base hit this season. USF opponents have been held to 34 singles in 51 innings. The staff's earned run average is a fine 1.63.

Friday's romp of Tampa

helped push the Brahman batting average to .271. The fielding is still very low, .914. USF has already broken over 50 records.

Wright will probably start Sherzer and Macki in two of the games this weekend. The third spot will probably go to either Sakkis or Kelly.

TAMPA					SOUTH FLORIDA					SOUTH FLORIDA					F.L.A.					SOUTHERN														
ab	h	r	b	i	ab	h	r	b	i	ab	h	r	b	i	ab	h	r	b	i	ab	h	r	b	i	ab	h	r	b	i					
Falco 3b	3	0	1	0	McGary 3b	3	0	1	0	McGary 3b	3	0	1	0	McGary 3b	3	0	1	0	Burek 2b	5	1	0	0	5	1	0	0	5	1	0	0		
Gumrot ss	4	0	0	0	Stuckie cf	2	1	0	0	Stuckie cf	2	1	0	0	Stuckie cf	2	1	0	0	Stuckie cf	2	1	0	0	Stuckie cf	2	1	0	0	Stuckie cf	2	1	0	0
Roderick 2b	4	0	0	0	Fishman cf	2	1	0	0	Fishman cf	2	1	0	0	Fishman cf	2	1	0	0	Fishman cf	2	1	0	0	Fishman cf	2	1	0	0	Fishman cf	2	1	0	0
Waelris 1b	4	0	0	0	Ulmer ss	5	3	3	1	Ulmer ss	5	3	3	1	Ulmer ss	5	3	3	1	Ulmer ss	5	3	3	1	Ulmer ss	5	3	3	1	Ulmer ss	5	3	3	1
Burgess rf	2	1	1	0	South rf	4	4	3	7	South rf	4	4	3	7	South rf	4	4	3	7	South rf	4	4	3	7	South rf	4	4	3	7	South rf	4	4	3	7
Broodhelt cf	2	0	0	0	Garcia c	3	0	1	0	Garcia c	3	0	1	0	Garcia c	3	0	1	0	Garcia c	3	0	1	0	Garcia c	3	0	1	0	Garcia c	3	0	1	0
Cleurell lf	2	0	0	0	Gray 2b	1	1	0	0	Gray 2b	1	1	0	0	Gray 2b	1	1	0	0	Gray 2b	1	1	0	0	Gray 2b	1	1	0	0	Gray 2b	1	1	0	0
Granda c	3	1	1	0	Schirger 1b	3	0	2	1	Schirger 1b	3	0	2	1	Schirger 1b	3	0	2	1	Schirger 1b	3	0	2	1	Schirger 1b	3	0	2	1	Schirger 1b	3	0	2	1
Griener p-lf	2	0	0	0	Fischer 1b	1	1	1	2	Fischer 1b	1	1	1	2	Fischer 1b	1	1	1	2	Fischer 1b	1	1	1	2	Fischer 1b	1	1	1	2	Fischer 1b	1	1	1	2
Kimball p	1	0	0	0	Richson 2b	2	0	1	0	Richson 2b	2	0	1	0	Richson 2b	2	0	1	0	Richson 2b	2	0	1	0	Richson 2b	2	0	1	0	Richson 2b	2	0	1	0
Cunhama p	1	0	0	0	Miquel 2b	0	0	0	0	Miquel 2b	0	0	0	0	Miquel 2b	0	0	0	0	Miquel 2b	0	0	0	0	Miquel 2b	0	0	0	0	Miquel 2b	0	0	0	0
					Heykens lf	2	0	0	0	Heykens lf	2	0	0	0	Heykens lf	2	0	0	0	Heykens lf	2	0	0	0	Heykens lf	2	0	0	0	Heykens lf	2	0	0	0
					Joinski lf	1	0	1	2	Joinski lf	1	0	1	2	Joinski lf	1	0	1	2	Joinski lf	1	0	1	2	Joinski lf	1	0	1	2	Joinski lf	1	0	1	2
					Sherzer p	3	1	1	0	Sherzer p	3	1	1	0	Sherzer p	3	1	1	0	Sherzer p	3	1	1	0	Sherzer p	3	1	1	0	Sherzer p	3	1	1	0
					Kelly p	1	0	0	0	Kelly p	1	0	0	0	Kelly p	1	0	0	0	Kelly p	1	0	0	0	Kelly p	1	0	0	0	Kelly p	1	0	0	0
Totals	27	2	3	0	Totals	36	15	13	13	Totals	40	4	7	4	Totals	40	4	7	4	Totals	40	4	7	4	Totals	40	4	7	4	Totals	40	4	7	4
FALCO					SOUTH FLORIDA					SOUTH FLORIDA					F.L.A.					SOUTHERN														
FALCO					SOUTH FLORIDA					SOUTH FLORIDA					F.L.A.					SOUTHERN														
FALCO					SOUTH FLORIDA					SOUTH FLORIDA					F.L.A.					SOUTHERN														
FALCO					SOUTH FLORIDA					SOUTH FLORIDA					F.L.A.					SOUTHERN														
FALCO					SOUTH FLORIDA					SOUTH FLORIDA					F.L.A.					SOUTHERN														
FALCO					SOUTH FLORIDA					SOUTH FLORIDA					F.L.A.					SOUTHERN														
FALCO					SOUTH FLORIDA					SOUTH FLORIDA					F.L.A.					SOUTHERN														
FALCO					SOUTH FLORIDA					SOUTH FLORIDA					F.L.A.					SOUTHERN														
FALCO					SOUTH FLORIDA					SOUTH FLORIDA					F.L.A.					SOUTHERN														
FALCO					SOUTH FLORIDA					SOUTH FLORIDA					F.L.A.					SOUTHERN														
FALCO					SOUTH FLORIDA					SOUTH FLORIDA					F.L.A.					SOUTHERN														
FALCO					SOUTH FLORIDA					SOUTH FLORIDA					F.L.A.					SOUTHERN														
FALCO					SOUTH FLORIDA					SOUTH FLORIDA					F.L.A.					SOUTHERN														
FALCO					SOUTH FLORIDA					SOUTH FLORIDA					F.L.A.					SOUTHERN														
FALCO					SOUTH FLORIDA					SOUTH FLORIDA					F.L.A.					SOUTHERN														
FALCO					SOUTH FLORIDA					SOUTH FLORIDA					F.L.A.					SOUTHERN														
FALCO					SOUTH FLORIDA					SOUTH FLORIDA					F.L.A.					SOUTHERN														
FALCO					SOUTH FLORIDA					SOUTH FLORIDA					F.L.A.					SOUTHERN														
FALCO					SOUTH FLORIDA					SOUTH FLORIDA					F.L.A.					SOUTHERN														
FALCO					SOUTH FLORIDA					SOUTH FLORIDA					F.L.A.					SOUTHERN														
FALCO					SOUTH FLORIDA					SOUTH FLORIDA					F.L.A.					SOUTHERN														
FALCO					SOUTH FLORIDA					SOUTH FLORIDA					F.L.A.					SOUTHERN														
FALCO					SOUTH FLORIDA					SOUTH FLORIDA					F.L.A.					SOUTHERN														
FALCO					SOUTH FLORIDA					SOUTH FLORIDA					F.L.A.					SOUTHERN														
FALCO					SOUTH FLORIDA					SOUTH FLORIDA					F.L.A.					SOUTHERN														
FALCO					SOUTH FLORIDA					SOUTH FLORIDA					F.L.A.					SOUTHERN														
FALCO					SOUTH FLORIDA					SOUTH FLORIDA					F.L.A.					SOUTHERN														
FALCO					SOUTH FLORIDA					SOUTH FLORIDA					F.L.A.					SOUTHERN														
FALCO					SOUTH FLORIDA					SOUTH FLORIDA					F.L.A.					SOUTHERN														
FALCO					SOUTH FLORIDA					SOUTH FLORIDA					F.L.A.					SOUTHERN														
FALCO					SOUTH FLORIDA					SOUTH FLORIDA					F.L.A.					SOUTHERN														
FALCO					SOUTH FLORIDA					SOUTH FLORIDA					F.L.A.					SOUTHERN														
FALCO					SOUTH FLORIDA					SOUTH FLORIDA					F.L.A.					SOUTHERN														
FALCO					SOUTH FLORIDA					SOUTH FLORIDA					F.L.A.					SOUTHERN														
FALCO					SOUTH FLORIDA					SOUTH FLORIDA					F.L.A.					SOUTHERN														
FALCO					SOUTH FLORIDA					SOUTH FLORIDA					F.L.A.					SOUTHERN														
FALCO					SOUTH FLORIDA					SOUTH FLORIDA					F.L.A.					SOUTHERN														
FALCO					SOUTH FLORIDA					SOUTH FLORIDA					F.L.A.					SOUTHERN														
FALCO					SOUTH FLORIDA					SOUTH FLORIDA					F.L.A.					SOUTHERN														
FALCO					SOUTH FLORIDA					SOUTH FLORIDA					F.L.A.					SOUTHERN														
FALCO					SOUTH FLORIDA					SOUTH FLORIDA					F.L.A.					SOUTHERN														
FALCO					SOUTH FLORIDA					SOUTH FLORIDA					F.L.A.					SOUTHERN														
FALCO					SOUTH FLORIDA					SOUTH FLORIDA					F.L.A.					SOUTHERN														
FALCO					SOUTH FLORIDA					SOUTH FLORIDA					F.L.A.					SOUTHERN														
FALCO					SOUTH FLORIDA					SOUTH FLORIDA					F.L.A.					SOUTHERN														
FALCO					SOUTH FLORIDA					SOUTH FLORIDA					F.L.A.					SOUTHERN														
FALCO					SOUTH FLORIDA					SOUTH FLORIDA					F.L.A.					SOUTHERN														
FALCO					SOUTH FLORIDA					SOUTH FLORIDA					F.L.A.					SOUTHERN														
FALCO					SOUTH FLORIDA					SOUTH FLORIDA					F.L.A.					SOUTHERN														
FALCO					SOUTH FLORIDA					SOUTH FLORIDA					F.L.A.					SOUTHERN														
FALCO					SOUTH FLORIDA					SOUTH FLORIDA					F.L.A.					SOUTHERN														
FALCO					SOUTH FLORIDA					SOUTH FLORIDA					F.L.A.					SOUTHERN														
FALCO					SOUTH FLORIDA					SOUTH FLORIDA					F.L.A.					SOUTHERN														
FALCO					SOUTH FLORIDA					SOUTH FLORIDA					F.L.A.					SOUTHERN														
FALCO					SOUTH FLORIDA					SOUTH FLORIDA					F.L.A.					SOUTHERN														
FALCO					SOUTH FLORIDA					SOUTH FLORIDA					F.L.A.					SOUTHERN														
FALCO					SOUTH FLORIDA					SOUTH FLORIDA					F.L.A.					SOUTHERN														
FALCO					SOUTH FLORIDA					SOUTH FLORIDA					F.L.A.					SOUTHERN														
FALCO					SOUTH FLORIDA					SOUTH FLORIDA					F.L.A.					SOUTHERN														
FALCO					SOUTH FLORIDA					SOUTH FLORIDA					F.L.A.					SOUTHERN														
FALCO					SOUTH FLORIDA					SOUTH FLORIDA					F.L																			

## Athletic Equipment Move Tops Recreation Changes

By ERIK BRANDT  
Correspondent

New pool tables and tables for chess and cards and moving of the athletic equipment room to the Physical Education Gymnasium (GYM) are among changes in recreation facilities for students this trimester.

The University Center recreation area has three new pool tables, one of which has replaced an old table.

"But we will open an additional table very soon," said James E. Blackwell, recreation area supervisor.

Six new two-person tables to facilitate chess and card players have also been installed.

Another change is that the price of pool playing has increased from 60 cents to 75 cents an hour. Chess, cards and table tennis are free.

"We were forced to increase the price because of the new student minimum wages and that we had to hire another full-time man," Blackwell said.

The recreation room is open between 9 a.m. and 10 p.m. Monday through Thursday, between noon and midnight Fridays and Saturdays and between 12:30 p.m. and midnight on Sundays.

The athletic equipment

room has, since last trimester been moved from Argos Center to the GYM. Equipment can be checked out there between 8 a.m. and 10 p.m. Monday through Friday, between 9 a.m. and 6 p.m. Saturday and between 1 p.m. and 6 p.m. Sunday for any athletic field exercise on campus.

A new track is ready for this trimester and a new baseball field is also open.

The swimming pool at Argos Center is open for recreational swimming every day between 2 p.m. and 6 p.m.

"A new swimming pool will be ready in March in the Gymnasium," Murphy M. Osborne Jr., assistant professor in physical education, said.

There are 16 tennis courts available for students. The six of them at Andros Complex are open all day till 10 p.m.; the others at the GYM close at sundown as there are no lights there.

Those students who want to ride bicycles can do so by checking out a bicycle at the equipment room.

A golfing area is open for recreational use in the afternoons and a golf court will be ready next fall.

The gymnasium itself pro-

vides a wrestling area, a weight training room, a dance studio and a gymnastics area. An obstacle course will also be ready soon.

## Terrace Beauty Salon

ALL PHASES OF  
BEAUTY CULTURE  
9303 56th St.  
Temple Terrace  
Shopping Center  
PHONE 988-2798

## College Life presents 'MARRIAGE'

Thursday, March 16 — 'Fit To Be Tied'  
Thursday, March 30 — 'The Perfect Knot'  
UNIVERSITY CENTER — 6:30 P.M.

USF CAMPUS CRUSADE for CHRIST

By JEFF SMITH  
Sports Writer

South Florida's women's net squad meets the Florida Gators Saturday, 10 a.m. at Gainesville. The Brahman coeds dropped the Gators 5-4 earlier this season at USF.

Coach Jo Anne Young's squad, 5-1, captured its third straight victory Saturday, toppling FSU 7-0 at Tallahassee.

TISH ADAMS had little trouble defeating FSU's Linda West, as she won 6-0, 6-0. Elsa Neson downed Kathy Geraghty 6-4, 6-2, and the Brahman was never close to losing the match.

Jacquie Adams put USF in front 3-0 by outpointing Lynne Chalmers 5-7, 6-1, 6-3. South Florida's Debbie Garrison nosed Bunny Smith 9-7, 6-4. Sharon Crowley climaxed the South Florida sweep defeating Heidi Hansen 6-3, 7-5.

Tish Adams and Miss Nelson

continued their winning ways in doubles play, stopping Miss West and Miss Geraghty 6-3, 6-2. Gwenda and Jacquie Adams defeated Miss Chalmers and Miss Smith 6-2, 6-2.

ROLLINS handed the Brahman their only loss, 6-1, at Winter Park in USF's third match. The Brahman meets the Tars April 7 on the Tampa campus.

South Florida tied for second in the FSU Invitational Tournament, March 3-5. Loyola of New Orleans and USF ended the three-day tourney with 16 points each. Rollins College won the title with 19 markers.

After the preliminaries, Jacquie Adams overwhelmed Spring Hill's Nancy Murphy, 6-0, 6-0. However, Loyola's Peggy Moore, seeded third, defeated the Brahman lass, 6-2, 6-1.

USF ACE Tish Adams, sev-

enth seed, almost went all the way as she was downed in the semi-finals. The sophomore netter topped Emory's Sandy Bragg, 6-0, 6-1. Florida's Mary Lou Cmaylo, 6-0, 6-0, Loyola's Sally Horan, 6-4, 6-4, and Miss Moore, 6-1, 6-2.

Rollins' Wendy Overton, seeded second, edged Miss Adams, 7-5, 6-2, and went on to win the singles title, defeating teammate Kathy Blake, first seed, 8-6, 6-3.

South Florida's Elesa Nelson rolled-over Converse's Julie Huhn, 6-2, 6-1. Miss Nelson crushed Florida's Gail Goodburn, 6-0, 6-0, but then lost to fourth-seeded Ann Moore, Loyola, 6-2, 6-3.

GWENDA ADAMS played a sharp game as she bruised St. Pete JC's Toni Little, 6-0, 6-0. Andree Martin, Mississippi State College for Women, stopped Miss Adams, 6-2, 6-3.

Tish Adams and Miss Nelson, seeded fourth in doubles, opened by topping Miss Beltz and Miss Sanderson, Broward JC, 6-2, 6-1, after drawing a bye. The USF duo dropped Newcomb's Suzy Ornstein and Christie King, 6-2, 6-1. FSU's Candy Gibson and Miss Smith took it on the chin from the Brahman pair, 6-3, 6-1.

Loyola's Ann and Peggy Moore, seeded second, stopped Miss Adams and Miss Nelson, 6-2, 3-6, 8-6, before losing to Miss Blake and Miss Overton, Rollins, 6-3, 6-3, in the finals.

GWENDA and Jacquie Adams drew a first-round bye and then defeated FSU's Margaret Kane and Miss Hansen, 6-1, 6-3. Florida's Suzanne Venning and Miss Goodburn lost to the tough pair, 6-4, 7-5. Broward JC's Chris Koutras and Toni Barone, seeded third, outpointed the Brahman flashes, 6-2, 7-5.

Miss Garrison and Miss Crowley started well as they dropped Columbus' Miss Hooper and Miss Hollon, 6-0, 6-0. Mississippi's Carol Hughes and Miss Martin, seeded fifth, defeated the pair, 6-0, 5-7, 6-0. Standings-1. Rollins-19. 2. USF-16 (tie). 3. Loyola (New Orleans) 16 (tie). 4. Broward JC-13. 5. FSU-12. 6. Mississippi State College for Women - 11. 7. Florida - 7. 8. Newcomb of Tulane University - 6. Manatee JC - 5 (tie). 10. Agnes Scott - 5 (tie). 11. Georgia-4. 12. St. Pete JC-1 (tie). 13. Columbus - 1 (tie). 14. Converse-1 (tie). 15. Emory-0 (tie). 16. Troy State-0 (tie). 17. Spring Hill-0 (tie). 18. Stetson-default. 19. Wesleyan-default.

## Vanderpoel Speaker For Republicans

Mrs. Lynne Vanderpoel, member of the Governor's Commission on Crime and president of the St. Petersburg Women's Republican Club, will speak here next Monday during the free hour in University Center 201.

Mrs. Vanderpoel will be the guest speaker for the Young Republicans Club. The public is invited to attend.

Her topic will be "The Role of the Young Republican and the Road to the White House." Mrs. Vanderpoel was one of the original members of the Young Republicans Club in New York City in 1940.

## Dr. Merle F. Dimbath presents An exciting tour of SOUTH AMERICA

7,000  
Miles  
Through  
the  
Land  
of  
Opportunity!



## COMPLETE TOUR PACKAGE OF THESE CITIES:

- Rio De Janeiro
- Sao Paulo
- Buenos Aires
- Santiago
- Lima
- Bogota

Leave Miami Aug. 10  
Return Miami Aug. 27

## PACKAGE INCLUDES:

Air transportation round trip from Miami; sightseeing tours of cities; delicious meals; airport-hotel transfers; double occupancy in fine hotels.

All this for only  
\$675.00  
Children under 12 half fare

Contact:  
DR. MERLE F. DIMBATH  
USF Ext 759

TRAVEL HOUSE  
TAMPA 253-0183

100% Financing Available  
FLY NOW - PAY LATER





# Carr Makes Projectors From Cans, Lightbulbs

By ERIK BRANDT  
Correspondent

Projectors made of coffee cans, light bulbs from cars and surplus transformers are working side by side with the latest technical equipment in the Planetarium and together they tell about the stars and planets.

The basic equipment in the Planetarium was purchased for \$50,000, but it has been supplemented with a lot of devices hand-made by the curator, Joseph A. Carr. Carr uses everything from tin cans to light bulbs from electric trains when making his projectors, which work as well as the factory-made ones.

"A LOT of these projectors are so expensive to buy, so you have to make them yourself if you want to have them," Carr explained.

To the original star and planetary projectors, Carr has now among other things added devices for showing comets, the Christmas Star and Northern Lights.

Since the Planetarium presented its first program on March 23, 1964, more than 81,000 people have visited its

shows. It was very popular from the start and this popularity seems to be slightly increasing.

EVEN THOUGH most of the visitors have been non-students, many USF students use this facility to learn about the secrets of the sky. "But we want to reach more students though," Carr said.

They tried for a while to give shows during a free hour, but only about 20 students came and they want the 100-seat planetarium to be at least half occupied. Every Sunday at 2:30, however, there is a show open to the public.

Some of the more popular programs presented by the Planetarium are: "Destination: Galaxies," "The Sun" and also "The Many Moons of the Solar System," which is scheduled for January and February 1967.

THE HEART of the Planetarium is the so called Spitz A-3-P projector — the first one to be installed in Florida — which shows the stars and the planets. This projector can be set to show the sky as it appears from any point on earth at any time in the past or future.

It can for example show exactly how the sky looked

the night the first U.S. satellite was launched or how it will appear at the next launching, when the date is set.

During the coming year equipment for \$10,000 will be added to the Planetarium. The most important device will be a coelostat, which consists of a series of motor-driven mirrors and which will be used for examining the sun and the moon.

CARR IS also working on some of his own projects. He is now building a Rotating Galaxy projector, which if purchased would cost almost \$800. Now he makes it of tin cans and surplus transformers instead.

With this projector Carr can show the galaxy in movement.

Another project Carr works on is to show how an astronaut will see the moon. The audience in the Planetarium will see the moon exactly as if they were in the space capsule.

"WE EVEN know enough about Mars to show that from a capsule in orbit," Carr said. But he added that every conception of space can change very easily and "then we have to change our pictures, too."

A model of an atom is an-

other device Carr has built. This one is going to be used in a future program and it is going to show the different parts of the atom moving around the center.

MOST OF these devices Carr has made himself, can be found factory made.

"But there are many which have not been made before, and then you must use your imagination," he said.

The Planetarium at USF is the third largest in the state. There is, however, Carr has noticed an increasing popularity for planetariums around the country and many of them have been built in recent years.



USF On TV

Harry Haigley, editor of The Oracle was interviewed by WTVT Channel 13's Pulse Extra Thursday. Haigley was asked to express his views on students' attitudes. The weekday program, which is aired at 5:30, is interviewing students, faculty and staff from colleges and universities of Florida for their opinions on "Student Involvement."

Faculty members from USF on the program will be Robert Wimmer, professor of Engineering, Charles Arnade, professor of American Idea, and Jack Moore, associate professor of English.

## Kashdin Shows Art Works in Coral Gables

The beauty of the microcosmic and macrocosmic world underlies the Feb. 12-March 10 one-man show of Gladys Kashdin, assistant professor of humanities at the USF at Rogue's Gallery Two in Coral Gables.

The exhibition won a prize in Clearwater in December for one-man shows and will be shown in Tallahassee this fall at the LeMoyné Art Foundation.

In the variety of polymer, collages and watercolors, the microcosmic subjects in the works are represented by tiny marine forms, which are enlarged and detailed. The macrocosmic aspect is represented by variations on a Gulf-stream theme.

Mrs. Kashdin, a resident of Tampa and West Palm Beach has studied with Robert Brackman and Stefan Hirsch at the Art Students League in New York and with Karl Zerbe at Florida State University where she recently received a Ph. D. in humanities.

She won the Palm Beach Art League Award of Merit for oils and drawings in 1958, 1960 and 1963. In 1960 her etchings and watercolors won a gold medal at the University of Miami. Her work is represented in collections at Florida State University, University of Miami, Rogue's Gallery Two and in private collections.

## State University Students Form President's Council

The Council of Student Body Presidents was formed at a Florida University Student Body President's Conference Feb. 25, in Winter Park.

The Council, purpose of which is to organize and unite the student governments of the different state universities, is composed of the leaders from USF, Florida State University, University of Florida, Florida Atlantic, and Florida A&M.

USF STUDENT Association President John Hogue, Vice President Don Gifford, Secretary of Academic Affairs Jack McGinnis, and Secretary of External Affairs Joe Anger-

meier were the USF representatives at the conference.

According to Angermeier, the council voted to support the Florida State Board of Regents in their attempt to secure the state's approval of the new \$443 - million dollar budget.

"Florida, at the present time," stated Angermeier, "rates 45th out of 50 states in the per cent of the State tax dollars spent on higher education."

"THE COUNCIL felt that any attempt to cut the Regent's budget would greatly hinder the state's educational system," added Angermeier.

## SEE LANGUAGE LAB

# Unintelligible Heritance?

By MISSY BELSITO  
Correspondent

When you receive that important letter from your wealthy great-uncle Guisepe, who owns the gondola factory in Venice, and you can't understand a word of it, don't panic.

Call the Language Laboratory and someone will be glad to tell you how many authentic gondolas he is sending for Christmas. (Incidentally Heritance is the French word for inheritance.)

The lab, located in the Administration Building, handles many personal and business requests for people in the Tampa area.

"THE OTHER DAY I received a call from a lady who wanted to know how to say 'Merry Christmas' in four different languages for her Christmas cards," said Dr. Armando Payas, director of the lab.

Students enrolled in lan-

guage courses are required to spend one hour each week in the lab. They punch in and out on a time clock. This provides a permanent record for grading and advising purposes. A student's improved pronunciation is often a result of time spent in the Lab, said Payas.

Payas continued, "Over 2,000 students use this Lab," which contains 80 booths and over 500 tapes. Students often must wait 30 minutes before finding a vacant booth.

THE STUDENT can use one of the 15 recording booths to play tapes or record his own voice. The other booths are channeled into the central control. "All the student does here is switch to his channel and listen," Payas said.

The lab contains tapes for students enrolled in French, Spanish, Italian, German, Russian, shorthand, speech, and physical education courses. They are either purchased or recorded by professors.

"The lab is moving to the Education Building in January," said Payas. It will be on the first floor.

JOHN W. RALLE, chief engineer said, "The new language lab will contain 150 to 200 booths and have ultra-modern equipment."

Students will sit in booths that are staggered and facing one another to conserve space yet give ample room for the student. He will dial a number to select his tape. "An unusual aspect in a few booths will be video tape contact with the instructor as well as audio," said Ralle.

Barbara Sanders, 3CB, commented, "More students would take advantage of tapping their own voice if they knew they could."

The Lab is open Monday through Friday from 8 a.m. to 5 p.m., and until 8 p.m. on Tuesdays. "The busiest time is between 10 and 11 a.m.," Sanders said. The chief problem of students, she said, is "breaking tapes — or worse yet, punching in on the 'out' clock during the rush hour."

## BUY YOUR STUDY AIDS NOW!

The latest MONARCH, CLIFF'S NOTES, DATA GUIDES, ARCO & SCHAU'S Are Now Available At

## UNIVERSITY EXCHANGE BOOKSTORE, INC.

10024 - 30th St. (West of Busch Gardens) Ph. 932-7715  
WE ALWAYS BUY USED BOOKS

ONE DAY ONLY  
Friday, March 17, 1967

## LONDON GRAFICA ARTS

Presents an exhibition  
and sale of  
original, lithographs,  
etchings, wood cuts



Daumier  
Carzou  
Chagall

Cassatt  
Corinth  
Dufy

Maillol  
Picasso  
Renoir

Rouault  
Toulouse-Lautrec  
Van Dongen

and many others moderately priced

Fine Arts Conference Room (FAH-110) 10 a.m. - 4 p.m.

## LUNCHEON BUFFET

MONDAY thru FRIDAY AT THE

# Holiday Inn® NORTHEAST

2701 EAST FOWLER AVENUE,  
TAMPA, FLORIDA

## — APPETIZERS —

Herring in Sour Cream, Potato and Maccaroni Salad,  
Eggs a la Russe, Cucumber Salad,  
Italian Salad, String Beans Vinaigrette,  
Tossed Green Salad with Your Choice of Dressing,  
Pickled Beets, Corn Relish, Olives, Celery Sticks,  
Radishes, Tunafish Salad, Chicken Supreme, Ham,  
Salami, Liverwurst, Sliced Turkey.

## — MAIN COURSES —

Beef Burgundy, Veal Scallopini, Fried Chicken,  
Mashed Potatoes, White Rice, Buttered Noodles,  
Sauteed Potatoes,  
Asparagus, Corn on the Cob, Peas, String Beans,  
Hot Breads and Butter.

## — DESSERTS —

Vanilla or Chocolate Pudding with Whipped Cream,  
Sparkling Gelatin with Fruits.

ALL FOR \$1.50

**CollegeMaster**  
Fidelity Union Life Insurance Co.  
**College Master**  
Guaranteed by a top company.  
No war clause  
Exclusive benefits at special rates  
Full aviation coverage.  
Premium deposits deferred until you are out of school.  
Joe Hobbs  
Fred Popia  
Ray Newcomer,  
Gen. Agent.  
3843 Kennedy Blvd.,  
Tampa, Florida  
Phone 877-8387

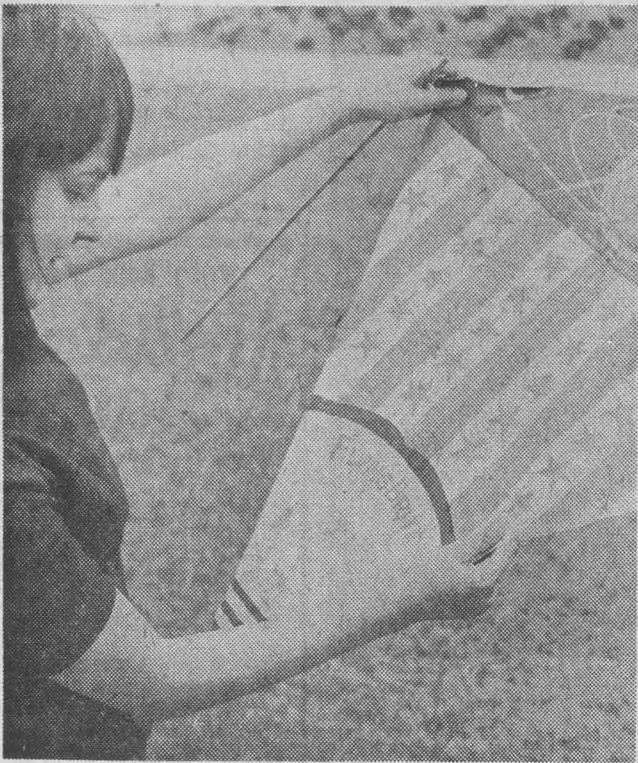
**ART SUPPLIES**  
**PICTURE FRAMING**  
STUDENT DISCOUNT  
6000 FLA. AVE. Phone 237-0873

**COMPLIMENTARY CHICKEN DINNER**  
Each child accompanied by an adult will receive a complimentary Chicken Dinner.  
SUNDAY ONLY  
— no obligation to adult —  
Don't forget that Hiram Offers  
Exclusively to USF Students & Faculty a  
10% DISCOUNT ON TOTAL GUEST CHECK OVER \$1.00 — ON THE INSIDE ONLY  
**DUTCH PANTRY**  
FAMILY RESTAURANTS & SILO DRIVE-IN  
HOURS: Weekdays 7 A.M. - 11 P.M. Phone 626-9910  
Fri. & Sat. 7 A.M. - 1 P.M. 56th St. & Hillsborough Ave.

**LOOK! Both Coin-Operated  
LAUNDRY & DRY CLEANING**  
In 1 Convenient Location  
At 9307 - 56th St.  
Temple Terrace  
A favorite with USF personnel.  
YOU'LL LIKE US, TOO — Here are a few reasons:  
• Best equipment anywhere  
• 8-lbs. in one dry cleaning load  
• Reasonable cost — 10-lbs. laundry, 25c; 20-lbs. 35c; 30-lbs., 50c  
• Snacks and soft drink machines  
• Attendant on duty usual hours  
Let's Get Acquainted!  
**KOIN KLEEN**  
LAUNDRY and DRY CLEANING  
Temple Terrace Shopping Center



## Oracle Features



### What's This?

It's a Linus, Snoopy and Charlie Brown-type kite, the kind that kite-eating trees like to have for breakfast. Freshman Vicki Vega is shown reading the list of ingred . . . uh, directions. They say the kite is guaranteed to aid any World War I flying ace, if he doesn't fly too low.



### The Touch Of Beethoven

The skilled hands of Beethoven couldn't match this exhibition of finger-deftness as Vickie tries to make heads and-or tails of America's newest pilot-distractor.

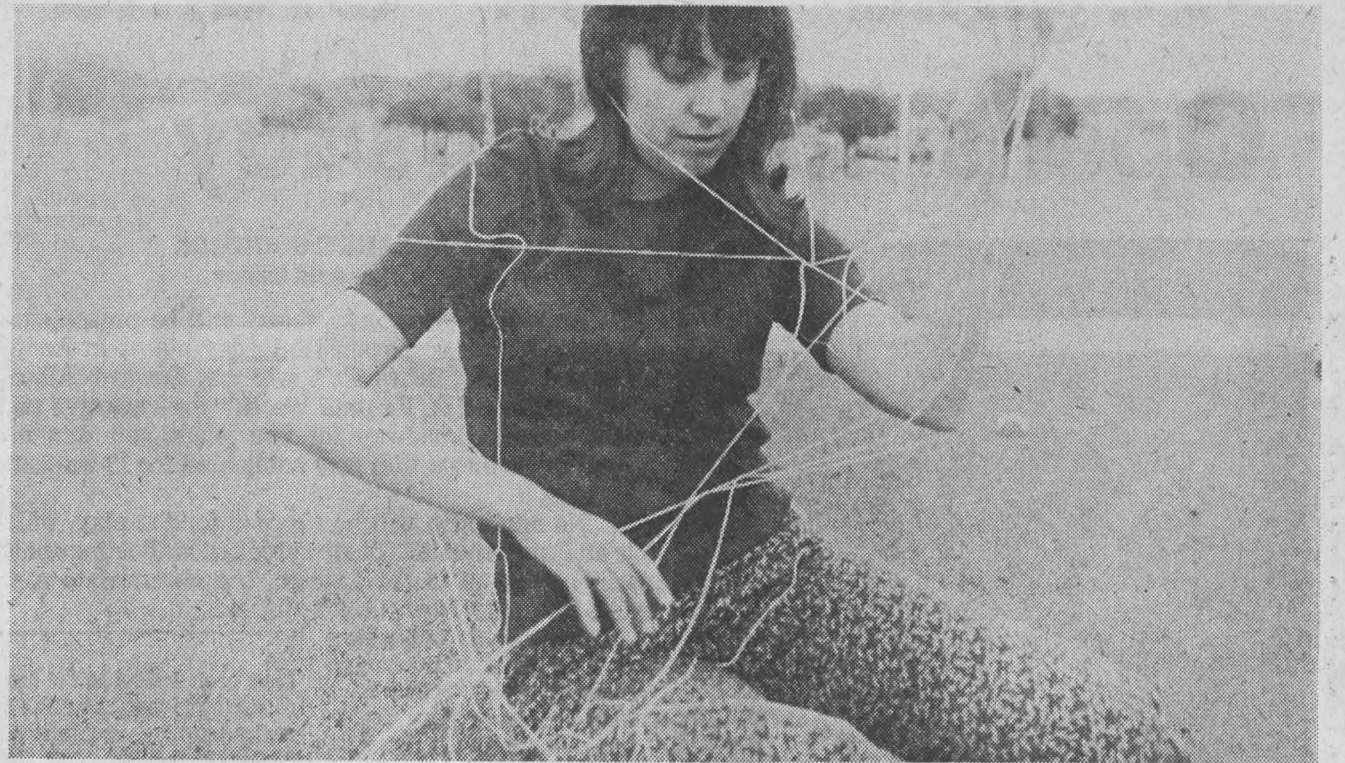
# Happiness Is Flying A Kite

Did you ever wonder what goes on inside the Pentagon? Vicki Vega, ICB, did and she stole the Defense Department's most prized possession, namely an old World War I defense secret. The reason it wasn't used was because everyone thought it was too horrible to use on any human airplane pilot.

Some say the most brilliant plans in practice are the most simple plans in conception and since Vicki isn't eligible for the draft (rules can be changed), she thought she might contribute in her own way to the nation's defense.

Russia doesn't have a chance.

Photos By Allan Smith  
Text By Stu Thayer



### Rats!

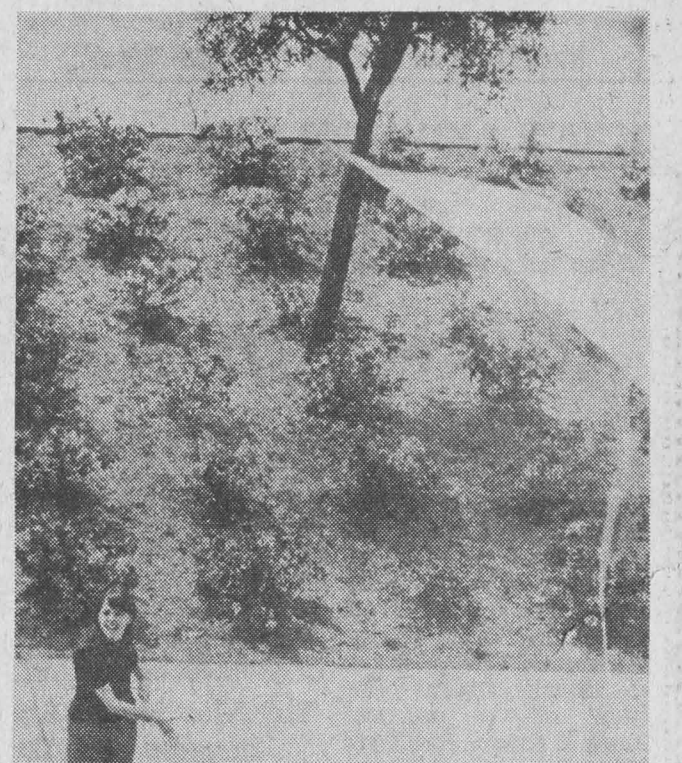
Now, just keep your cool — even Beethoven made mistakes. If only these directions weren't written in German. This pilot distractor is supposed to distract the pilots, but from the

looks of things, our assembler is fit to be tied trying to read them.



### A Masterpiece

This masterpiece in weaponry would measure up to any standard. The pride of McNamara is ready for action (as long as President Johnson doesn't tell the Federal Aviation Agency).



### Airborne, But . . .

It's one of those kite-eating trees again, threatening to make a mockery of America's newest offensive weapon but Vicki seems to be keeping her prize at a safe distance. Watch Out, Red Baron.

# Growing Beard Is Long Issue



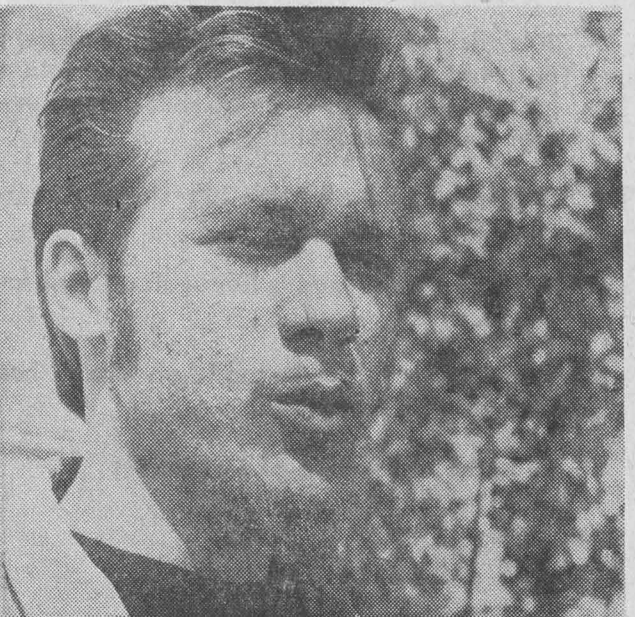
### In The Doghouse

Charlie Burdick, 3PC, grew his chin lawn because "it takes 13½ pancakes to shingle a doghouse roof." When was the last time you were able to shingle a doghouse roof with just 13½ pancakes? Should take at least 20.



### A Funny Thing Happened

Charles Arnade, professor of the American Idea and president of the USF American Association of University Professors, specializes in the study of the underdeveloped countries. But a funny thing happened. He said he got his chin warmer "from a Mennonite on the way to Nigeria."



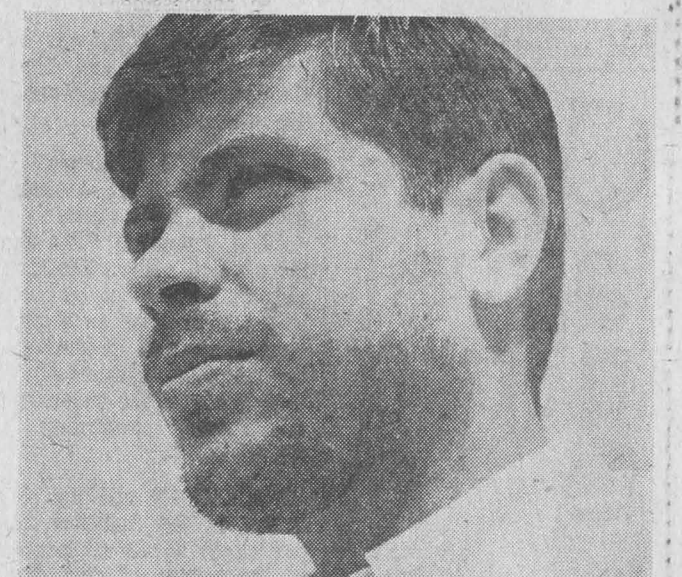
### Jesus Liked It

Jim White, ICB, has his unshaved cleft because "if it's good enough for Jesus, it's good enough for me." Can't argue with that.



### Nature Lover

Richard Greenstone, 3CB, says he maintains his neck-lining in those hot Miami days because he "wanted to return to nature." Greenstone lists his home address as Miami but lives off-campus in Tampa. Careful of those ashes.



### How Do You Look?

Bill Langstaff, 2CB, says he grew his herbage because "I've never seen myself with a beard." How does he look, y'all? (We welcome letters to the editor.)



### How Sweet It Is

Don Charles, ICB, seems entranced, perhaps by the smell of lotus but he said he has his cabin shrubbery because he guessed he "just didn't shave it." He's a good gardener to keep it welly trimmed.



BARRY ENGEL  
doesn't like it.



DON NOLIN  
. . . just felt like it.



IN ANDROS LOUNGE

# 'Virginia Woolf' Drama Opens This Thursday



Martha Eyes Nick In 'Virginia Woolf'

By LARRY GOODMAN  
Fine Arts Editor

An indoor "fireworks show" will be presented at 8 p.m., Thursday through Saturday nights in Andros Lounge. The "fireworks" will be Edward Albee's "Who's Afraid of Virginia Woolf," the explosive play that rocked Broadway for two years and was last year made into a film now nominated for 13 academy awards.

No admission will be charged for the play, which is an Experimental Theatre production. Folding chairs will be set up in the Lounge to accommodate some 100. The play is about 3 hours long.

'Virginia Woolf' is the story of a breakdown in a marriage. The play focuses on a New England college professor, George, and his wife, Martha, daughter of the college's president.

THEIR MARRIAGE IS riddled by frustrations and delusions which are heaped upon two visitors during a period of several hours. The two visitors are Nick, a newly arrived biology professor, and his naive wife, Honey. The two

have been invited to the home of George and Martha for early morning cocktails following a faculty party. The play's cast is as follows: George: Joseph Argenio, 3TA; Martha: Elizabeth Lynch; 3TA; Nick: Art Taxman, 2CB; Honey: Claudia Jurgensen, 1CB.

FRANK MORSE, 3TA, is directing the play for a theatre class project. Morse calls the play "a contemporary classic." "The most difficult thing (in directing the play)," said Morse, "has been in finding a contrast, and not letting the continual 'ranting' predominate." He said it was also a problem to capture the mood of the "psychological games" that George and Martha play on each other and on Nick and Honey.

"Basically Albee's making a statement about the need we have for illusion," Morse said. "But this is only one of the things that can be said about it."

Stage manager for the play is John Joseph D'Esposito. Assistant stage manager is Barbara Malloy. The setting is by Barbara Richardson, the costumes by Mrs. James Scott, and the lighting by James Scott.

## Now On Sale!

USF's new literary magazine, "South Florida Review," is now on sale in the University Center Bookstore. The 56-page magazine costs 25 cents and contains poetry, prose and lithographed drawings and etchings. Some 38 persons contributed to the magazine, including 24 from USF.

## Poems From 'Review' To Be Read Tonight

There will be a reading of poems from South Florida Review, USF's new literary magazine, at the meeting of the English Club tonight at 7 in University Center 252.

According to Tom Kelly, president of the English Club, the literary magazine will be on sale at the meeting. Copies of i.e., last year's magazine, will also be available.

Readings from "South Florida Review" will be presented by students and faculty members.

## French Film Classic 8:30 Tonight In BSA

"Jules and Jim," a French film classic, will be shown tonight at 8:30 p.m. in the Business Administration Auditorium.

The film stars Jeanne Moreau and Oskar Werner, and is directed by Francois Truffaut. "One wants to see this film every year," said The New Yorker magazine.

Non-members of the Film Classics League are asked to donate \$1 at the door.

## Whitaker Speaks Today

State Sen. Tom Whitaker, candidate for re-election to the State Senate March 28, will speak on campaign issues today in CTR 201, Robert Funderburk said.

Funderburk, chairman of the USF students for Whitaker Committee of the campus Young Democrats Club, said the meeting is open to the public.

## DR. LLOYD FIRESTONE

Announces the opening of his office for the General Practice of Optometry at  
14958 BEARSS PLAZA  
(North Florida Ave.)  
9:00-5:30  
Mon.-Fri.  
Closed Wed.  
9:00-1:00  
Sat.  
Evenings by Appointment  
TELEPHONE 932-3023



## TO PLAY THURSDAY

# Fine Arts Quartet Said 'Elegant, Fiery, Moving'

By LARRY GOODMAN  
Fine Arts Editor

"Elegant, fiery and moving;" "belonging to that small realm of really great chamber music combinations"; "four soloists in absolute synthesis"; These are three comments that New York, London and Geneva reviewers have used in describing the playing of the Fine Arts Quartet. The string quartet will perform here at 8:30 p.m., Thursday in the Theatre.

Tickets for the Artist Series concert are available at the Theatre Box Office (ext. 323); prices are as follows: students — \$1; staff, faculty, Foundation members — \$2; general public — \$3.

The program will include these works: Telemann's "Sonata a quattro in A major," Mozart's "Adagio and Fugue, K. 546," Bartok's "Third Quartet (1927)," and Mendelssohn's "Quartet in D major, Opus 44, No. 1." An intermission will come after the Bartok number.

THE QUARTET was organized in 1946 by Leonard Sorkin, first violinist, and George Sopkin, cellist. Sorkin is a former member of the Chicago Symphony and was concertmaster of the ABC orchestra in Chicago. Sopkin played with the Chicago Symphony and was on the music faculty of the University of Wisconsin

before joining the Air Force during World War II.

The other two Quartet members are Abram Loft, violin, and Gerald Stanick, cello. Loft holds a Ph.D. in musicology from Columbia University and served on the music faculty there. Stanick played at 17 with two Winnepeg symphonies and later studied at the University of Indiana under Benar Helfetz and others.

BEGINNING in 1946, the Quartet was featured weekly over the ABC radio network. The program ran for eight years and brought demands for "in person" performances. The Quartet has since appeared in virtually every major music hall in the United States. Since 1958 they have made five European tours.

SINCE 1955, the Quartet has

Essrig's Carries The Most Complete Stock of Fabrics & Notions In Florida.

Essrig's EXCLUSIFABRICS  
Telephone 223-3068  
808 Franklin Street  
Tampa, Florida

## Quartet Members

Fine Arts Quartet members are (clockwise from bottom): Leonard Sorkin, first violinist; Abram Loft, violinist; George Sopkin, cellist; and Gerald Stanick, violist. The world renowned ensemble will perform string literature ranging from Haydn to Bartok at their 8:30 p.m. concert Thursday.

every Sunday at  
**Holiday Inn**  
family style  
**CHICKEN DINNER**

Tender, skillet-browned chicken, snow-whipped potatoes, green vegetable, festive red cranberry sauce, hot buttered biscuits with plenty of honey, for dessert—your choice of ice cream, sherbet or sparkling gelatin. The cost is a moderate \$2.50 For Adults, Just \$1.25 for Children

**HOLIDAY INN**  
Northeast  
2101 E. Fowler,  
Tampa

## TICKETS NOW ON SALE

# Confusing Play, 'Tiny Alice,' In Rehearsal

By LARRY GOODMAN  
Fine Arts Editor

A play that no one fully understands — including the playwright — yet which almost everyone agrees is significant drama is now in its final weeks of rehearsal here. The Theatre USF production of Edward Albee's "Tiny Alice" will be performed March 30 through April 1 and April 6 through April 8 in the Theatre.

Tickets for the play are now on sale in the Theatre Box Office, ext. 323, during the hours of 1 to 5 p.m.

Ben Piazza, professional actor from New York, will play the lead role of Julian in the production. The rest of the cast is Holly Gwinn, 4TA,



'Tiny Alice' Players Are From Left Holly Gwinn, Ed Thompson, Bill Alexander And Doug Kaye

Miss Alice; Ed Thompson, non-student, the lawyer; Doug Kaye, 2CB, the Cardinal; Bill Alexander, 1CB, the butler. (An earlier story in The Oracle incorrectly listed Prof. Donald Saff as playing the butler.)

Bob Erwin, 3CB, will apprentice Piazza, and Heidi Haughe, 1CB, will apprentice Miss Gwinn.

DIRECTING THE play is Peter B. O'Sullivan, assistant professor of theatre arts.

Albee, author of "The Zoo Story," and "Who's Afraid of Virginia Woolf," (to be given here this week as an Experimental Theatre production), is "one of the brightest American lights in the theatre of the absurd," according to O'Sullivan.

O'SULLIVAN said the play exists so the audience can participate in an exploration of the nature of God. But, there is at the same time the humorous and the diabolical about it, he added.

Abraham N. Franzblau, a psychiatrist who saw the Broadway production, wrote in "Saturday Review" that "Tiny Alice" is "a blend of Theatre and Freudian 'dream-work,' reality and fantasy, obliging us to apply to it not the logic of the intellect, which has failed all those limited to its spectrum, but the logic of the unconscious, that same logic that enables us professionally to unravel a

dream or cure a crippling phobia."

"HE (ALBEE) pinions the absurdities of life," wrote Franzblau, "its inequities and inequities, focuses his microscope upon it, and leaves you to react."

"The biggest problem (in presenting the play) is that the audience will be looking for meaning rather than experience," said O'Sullivan. "The play does suggest," said O'Sullivan, "that whatever God is, His complexity is such that any attempt to understand Him is absurd." "It is theatre of the absurd insofar as this state, but not beyond," O'Sullivan said.

WHEN ASKED how he compared the play to "Who's Afraid of Virginia Woolf," O'Sullivan said "It ('Tiny Alice') says many more things much more politely."

Professional actor Ben Piazza, who will play the lead role of Julian, a secretary to a Roman Cardinal, is well-cast, said O'Sullivan. Piazza, who will be writing a new play while in residence here, is enthusiastic about the role, according to O'Sullivan. Playing "Julian," in "Tiny Alice," is something he's always wanted to do," O'Sullivan said.

## Lead For 'Alice'

## To Be Ben Piazza

Ben Piazza, who will be playing the lead in "Tiny Alice" to be presented by the USF Theatre has been characterized by the play's director, Peter O'Sullivan, as having "more potential for the role of Julian than John Gielgud, who had the Broadway role."

O'Sullivan, assistant professor of theatre arts, and Piazza were undergraduate classmates at Princeton.

PIAZZA ARRIVED on campus last Thursday and will leave April 9. During his month-long visit, he will be involved in informal coaching of student actors, and told O'Sullivan he would enjoy sitting in on some English classes.

# Come alive!



You're in the Pepsi generation!

## PROFITABLE FUN EARN \$150 PER WEEK OR MORE!

S.M.C. offers unusual profitable summer employment opportunities for undergraduate college men.

We will train you to present an investment program to single employed girls.

We offer employment in major Florida cities. Qualifications: 18-28, male, neat and personable with automobile — and a burning desire to earn better than average income.

For further information and interview assignment contact:

MR. COLBY  
Placement Service, A.D. 280

YOU ARE CORDIALLY INVITED TO SEE

Fashions from

March 21, 1967 at 7:30 P.M.

Tampa Women's Club Auditorium — 315 Plant Avenue

Presented by The Tampa Little Women's Club

DONATION \$1.00

The Clothes Horse

We are **NOW** taking applications  
For students to reside in beautiful

## Fontana Hall

New deluxe residence hall for men and women students, approved and supervised by the University of South Florida.

ALSO AVAILABLE TO HILLSBOROUGH COUNTY RESIDENTS.

Here are some of the MANY attractive features of Fontana Hall:

✓ 20 delicious meals weekly from our own operated food service. Students may return for unlimited seconds on all menu items except special menu entrees.

✓ Semi-private bath with tub-shower combination.

✓ Swimming pool and other recreational facilities.

✓ Each suite is fully air-conditioned and has wall-to-wall carpeting.

... and many more plus features!

We invite you to visit our Model Suite  
and pick up your application form **NOW** at

4200 FLETCHER AVENUE

Woodrow Wilson, General Manager Phone 932-4391



Architect's drawing of Fontana Hall, dining rooms at left.