

1983

Notes on the First Banding of the Cave Swallow (*hirundo Fulva*) in Arizona

Philip M. Walters

Follow this and additional works at: <https://digitalcommons.usf.edu/nabb>

Recommended Citation

Walters, Philip M. (1983) "Notes on the First Banding of the Cave Swallow (*hirundo Fulva*) in Arizona," *North American Bird Bander*. Vol. 8 : Iss. 3 , Article 5.
Available at: <https://digitalcommons.usf.edu/nabb/vol8/iss3/5>

This Contents is brought to you for free and open access by the Searchable Ornithological Research Archive at Digital Commons @ University of South Florida. It has been accepted for inclusion in North American Bird Bander by an authorized editor of Digital Commons @ University of South Florida. For more information, please contact digitalcommons@usf.edu.

Literature cited

Aldrich, J. and J.S. Weske, 1978. Origin and evolution of the eastern House Finch population. *Auk* 95:528-536.
Bequaert, J.C., 1953. The Hippoboscidae of mammals and birds. *Entomologica Americana* 32 (N. Ser.): 10442.

Middleton, R.J., 1979. House Finches in southeastern and central Pennsylvania. *North American Bird Bander* 4:166-168.

Rothschild, M., and T. Clay, 1952. Fleas, flukes, and cuckoos. Philosophical Library, New York.

811 N. Allen St., State College, Pennsylvania 16803.

Notes on the first banding of the Cave Swallow (*Hirundo fulva*) in Arizona

Philip M. Walters

D Stotz found the first Cave Swallow in Arizona on 11 May 1979 on the University of Arizona campus, Tucson (Monson and Phillips, 1981. Annotated Checklist on the Birds of Arizona, Second Edition. The University of Arizona Press). In the spring of 1983 the first active nest was discovered at the same location, extending the known breeding range westward by 300 miles or more. The nearest known nesting sites are in New Mexico in and around Carlsbad Caverns. The first record for the species in New Mexico was in 1930. (Dr. John P. Hubbard, priv. comm.).

On 6 July 1983, Thomas Huels successfully captured the female and removed three nestlings; and on 8 July he also captured the male at the nest. All were banded and aged, and the adults sexed by the author.

The female (930-92916) was sexed on the basis of a receding brood patch, and determined to be a second year adult by an incompletely ossified skull. The skull in a number of swallow species does not completely ossify until the first spring and even into the summer and fall of the second year. (U.S. Fish and Wildlife Service and Canadian Wildlife Service, 1976, revised 1980. *North American Bird Banding Manual*, Vol. II, Bird Banding Techniques). The male (930-92923) was sexed on the basis of a partially developed cloacal protuberance (4mm) and its presence in the nest occupied by the female and the three nestlings (930-92917,8,9; all successfully fledged).

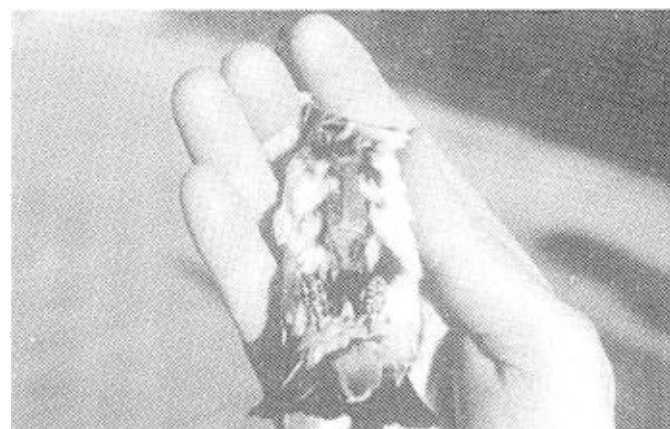
The adults showed no evidence of molt. In examining for feather wear, only the male showed slight wear of the primaries and moderate wear of the rectrices. I recorded the following measurements for the five individuals.

Weights — male 19.7 g; female 18.9 g; and the nestlings 22.1, 22.3, 20.6 g. Wing chord — male 105 mm; female 107 mm; and the nestlings 79, 76, 76 mm. Tail length — male 47 mm, female 55 mm and nestlings 36, 33, 33 mm.

5111 Soledad Primera, Tucson, Arizona 85718



Cave Swallow. 930-92917. L-U. Banded 6 July 1983.



Cave Swallow. 930-92916. SY-F, showing brood patch. Banded 6 July 1983.



Cave Swallow. 930-92923. AHY-M. Banded 8 July 1983.