

6-5-1961

## The Tampa Times: University of South Florida Campus Edition, June 5, 1961

Betty J. Woodward

Follow this and additional works at: [https://digitalcommons.usf.edu/times\\_campus](https://digitalcommons.usf.edu/times_campus)

---

### Recommended Citation

Woodward, Betty J., "The Tampa Times: University of South Florida Campus Edition, June 5, 1961" (1961).  
*Tampa Times Campus Edition*. 196.  
[https://digitalcommons.usf.edu/times\\_campus/196](https://digitalcommons.usf.edu/times_campus/196)

This Text is brought to you for free and open access by the USF Student Publications at Digital Commons @ University of South Florida. It has been accepted for inclusion in Tampa Times Campus Edition by an authorized administrator of Digital Commons @ University of South Florida. For more information, please contact [digitalcommons@usf.edu](mailto:digitalcommons@usf.edu).

Nice Twice  
Clear to partly cloudy  
through Tuesday. High to-  
day and Tuesday 92. Low  
tonight 72.



# THE TAMPA TIMES

SIXTY-NINTH YEAR—No. 102

TAMPA, FLORIDA, MONDAY, JUNE 5, 1961

DENNIS  
THE  
MENACE  
TODAY IN THE TIMES

PRICE FIVE CENTS

## Students, Faculty Planning Together For Next Year

### Chinsegut Hill Conference Stirs Up Ideas for Action

By WING PREODOR

Students and faculty who attended the recent "Planning for Next Year" conference at Chinsegut Hill reported during the free hour last Wednesday that the conference was successful. However, the final measure of success cannot be made until some of the suggestions and recommendations made by the group can be put into actual use next fall. It was agreed the conference-retreat should be included in

next year's program. The students and 18 faculty who attended the conference were chosen from lists prepared by the student senators and some of the faculty. Persons whose names appeared on both lists were invited to attend, and half the remaining names was taken from each list.

The large group was divided into smaller discussion groups three times shuffling names in such a way that everyone had a chance to exchange ideas with as many other persons as possible.

The five questions under consideration were: 1. How is our curriculum working? 2. How can student life be best coordinated with an accent on learning? 3. How can our instruction be improved? 4. How to be a sophomore? 5. What should our long range plans be?

Buzz, Buzz, Buzz

The group was first divided into buzz sessions of six people each to "brainstorm" one question after another and report their ideas to the entire conference.

Then each buzz group came together with a other buzz group and each of the five resulting groups was assigned one of the five questions to discuss. Finally, the conference was divided into three groups for discussion and exchange of ideas on all the questions. The reporters last Wednesday were representatives of these three groups.

Students Report

Reporting for the conference were Jim Klapps and Wing Preodor.

In regard to the first question (How is our curriculum working?) most of the criticisms and recommendations were aimed at the lectures and laboratory periods in the basic courses. Students complained that lectures were not coordinated with class discussion, and that often the lab period was another two hour lecture by the instructor.

The problem of promoting stimulating class discussion was discussed in some detail by all three groups, the reporters said. It was agreed that classes which emphasized an exchange of ideas were not only enjoyable, but more interesting and many times more profitable.

Two Sided Problem

Two things were deemed necessary for a good class discussion. First, the students must have read enough so that they will not simply exchange ignorance. Second, instructors must be willing to encourage and lead the discussion.

The second question (How can student life be best coordinated with an accent on learning?) was answered by several suggestions. It was suggested that the standards for clubs regarding goals and purposes be on other than a strictly social

(Continued on Page 2, Col. 3)

### Little Man on Campus



"By th' way, Ed, Dr. Fernandez said that's high powered acid in that Coke bottle."



—USF Photo

### ORCHIDS AND MARLENE

Marlene Hennis, a student, looks over a specimen from the Garay collection of orchids in the university's herbarium. The herbarium was featured on a half-hour TV show over WFLA-TV last Saturday and on the garden page of the Tampa Tribune yesterday.

4,000 PLUS

## Orchid Specimens Presented to USF

By BETTY J. WOODARD

USF has become the repository of an outstanding collection of orchid specimens through the generosity of Dr. George R. Cooley, research fellow with the Garay Herbarium at Harvard University. Dr. Cooley obtained the collection and presented it to the university through the USF Foundation.

The specimens, which recently arrived on the campus, are to be incorporated into the university's herbarium, according to Dr. James D. Ray, associate professor of botany.

The orchid collection includes specimens native to all parts of the world. Unlike the large and colorful horticultural forms, most of the specimens in the Garay collection are small-flowered and relatively inconspicuous, similar to orchids native to Florida. However, they represent an almost infinite variety in sizes and shapes of flowers and leaves, as well as a great many countries of origin.

### 4,000 Specimens

More than 4,000 pressed and dried specimens, photographs, drawings, and written descriptions are included in the collection. Many of the orchid specimens and records were obtained by Dr. Garay during his studies in the large herbaria at Vienna, Kew, Geneva, Paris, and Stockholm.

Dr. Garay, a native of Hungary, had a varied career in learning his specialty. He made his way westward in 1944 from the University of Pecs where he was a student. After going

to Canada in 1949, he was employed as a railroad worker for a year before finding a position as botanist at the University of Toronto where he resumed his studies. He became curator of the Ames Herbarium at Harvard in 1953.

In making his collection available for purchase, Dr. Garay said that he felt important collections of botanical specimens should be as fully dispersed as practical to avoid the danger of loss in any future war. He thus favored the USF location.

The large Schlechter collection of orchids housed in Berlin was lost in this way during World War II, leaving the exact application of some of Schlechter's names for orchids in doubt. Since the other large American orchid collection is that at Harvard University, the University of South Florida's location at a distance from Massachusetts and in proximity to the tropics makes it a particularly fitting repository for the Garay collection.

## No Stop in Campus Edition

The University of South Florida Campus Edition of The Tampa Times will continue during summer school being available on the following dates: June 19, 26; July 3, 10, 17, 24, 31; and Aug. 7. The first issue in the fall will be out Oct. 2, the first day of classes.

During the summer faculty and administrative offices may find the frequency of publication helpful in spreading official notices as the Green Bulletin, the official administrative publication, will be issued only

### Followup On Carrollwood's 'Faculty Row'

Last week the editors of the "Campus Edition" ran a story on "Faculty Row" in Carrollwood. The story had been around the editor's desk for several months and needing some filler we ran it adding a couple of paragraphs at the end from information more recently picked up.

Our faculty advisor said we could have picked better adjectives in a few places and he added that the story drew a complaint from an employee of Sunstate Builders and a faculty wife. However, it in turn sparked a demand for extra copies of the "Campus Edition" of that issue and when we ran low one faculty member said, "I really don't need the entire paper. Just give me five or six clippings of that story to send friends and relatives."

Well, the original story was done with tongue in cheek. But now we wonder was the demand for clippings kicked up by pride of homeownership or perhaps a feeling of a "bit of status."

once a month. Just address notices to: Adviser, Office of Campus Publications. Deadline is noon Wednesday before date of publication. Meanwhile, faculty and students who will not be on campus during the summer may subscribe to the Campus Edition for 50c for the eight issues. These will be mailed to any address. Subscriptions may be placed at the News Bureau in the Administration Building or the Information Desk in the University Center.

### You Can Get Summer Copies Of THE CAMPUS EDITION

Eight issues of the Campus Edition of The Tampa Times will be mailed you during the summer for 50 cents. Please fill out this form and leave it with 50 cents at the News Bureau in the Administration Building or at Info Desk in the UC.

Name .....  
Address .....  
(to which copies will be mailed)  
City ..... State .....

### REGISTRATION

## Summer Sessions Enrollment Rises

The enrollment for the summer sessions, which begins June 19, is strong and continues to improve, according to Dr. Frank Spain, registrar. More than 200 of the charter class members have completed registration for the summer and 150-200 new students have filed applications. These numbers will continue to increase until registration is closed June 21. Total registration is expected to be between 600 and 800.

### Registration Schedule

The following is a copy of the latest release containing all correction concerning registration:  
I. Summer School (1-3 is for presently enrolled USF students)  
1. June 14: 9-12 a.m., 1-4 p.m.  
2. New students will have orientation on June 15 and will register on June 16.

II. 1961-62 Fall Semester for students who have been in attendance at the University of South Florida (whether attending summer school or not).  
1. July 24—August 4 according to the following guide for the last name:  
July 24 C-D July 31 Q-R  
July 25 E-G Aug. 1 S-T  
July 26 H-K Aug. 2 U-Z  
July 27 L-M Aug. 3 A-B  
July 28 N-P Aug. 4 Cleanout  
III. New Fall semester students

By appointment—September 5-22  
Each student will be here for two days of orientation, testing and registration.  
IV. Evening students  
1. New—by appointment—September 18 or 19  
2. Returning—by appointment—September 26 or 28

IMPORTANT NOTE: Payment will precede the reservation of spaces in classes. The student commencing his registration should be prepared to pay.

As of now, USF does not have any recognized international students. The program for international students is no different than the regular program.

Spain feels that the University of South Florida has not received applications from foreign students due to not being a well-known university as yet.

The university received full accreditation by the United States Immigration and Naturalization Service 18 months ago.

There are several students on campus who are not U.S. citizens but they are not officially recognized as international students because they do not possess a passport or visa which states that the owner is in the United States to attend college. Those on campus who are not citizens are Cuban refugees or their parents have moved into this vicinity from Canada.

## President Praises Faculty

The University of South Florida Senate held its last meeting of the school year at 4 p.m. Friday, May 26, and heard Dr. John S. Allen, USF president, compliment the faculty for teaching in such a fine manner courses that had been planned for them before they arrived. Of the members of the charter class, he said that they moved into a vacuum and had an unprecedented challenge in fulfilling obligations such as electing officers of the student body, senators and writing a constitution.

### Daily Schedule

MONDAY, JUNE 5, 1961  
7:30 p.m. U.W.C. Bridge UC 167  
TUESDAY, JUNE 6, 1961  
5:00 p.m. Education Dir. UC 103  
7:00 p.m. Anthropology TV UC Lounge  
THURSDAY, JUNE 8, 1961  
11:00 a.m. English Faculty UC 215  
12:00 p.m. Human Behavior UC 103  
Deans' Meeting UC 167  
6:00 p.m. Health Adv. Din. UC 264

### SPARK OF HOPE—

## USF Senate Sees Need for Sports

By JOHN GULLETT

The importance of athletics on the University of South Florida campus received a big shot in the arm recently when the University Senate recognized publicly the need for such a program.

The action came as a result of extensive inquiry of the problem by Dennis Granda, student senator. Granda was present when the May 26 Senate meeting discussed the university's lack of an adequate athletic program. Officials admitted the program was not adequate, but said funds were the major problem.

### Committee for Action

Granda asked if it were possible to investigate acquiring funds elsewhere, other than from legislative appropriations. This was agreed upon, and an ad hoc committee, headed by Dr. Gil Hertz, physical education director, was organized to seek out ways to raise these funds.

This is a major step, Granda said, "for those who are trying to bring the ideal athletic program to USF. This is the first time the students were recognized as being involved in the problem."

Wait 'til October  
Granda and his cohorts are not stopping here. "We plan to bring this topic up again in the fall, to find out just how much has been done by this committee. At that time we hope to define the student's role in this situation, and what he can do to realize his needs."

Granda asked that students join together in a mutual cause, and seek out ways to raise the necessary money. "If anyone

has an idea as to how a portion of this can be raised, please contact myself or Dr. Hertz," he said.

Initial inquiry started May 9, when Granda presented a "Discussion on Athletics" to the Planning and Policies Committee, headed by Dr. Sidney J. French, dean of the College of Basic Studies. In it the senator sought answers as to why the university's growth in the area of athletics was at a standstill, and how the student body could help.

### Words Sound Good

In a May 19 reply, French commented on funds, and said, "In the event appropriations are not made, the university will still do whatever it can with its own staff to prepare for and promote those intramural sports which require little in the way of facilities, as it has already done."

French continued, "The suggestion that students might assist is deeply appreciated. It is typical of the cooperative attitude between students, faculty, administration and staff which has existed since the university started, and when the situation is further clarified there will, no doubt, be many ways in which the students can assist in developing this important university program."

### CAMPUS ROUNDUP

## USF Might Get Entrance Sign

By CAROL MARTIN

University of South Florida—The blue-prints for a landscaping project, including a sign, at the main entrance drive at Fowler Avenue, have been given to Dr. John S. Allen, president, for his approval.

Description of the project includes a brick wall, that isn't really a wall, shaped in a semi-circle. The USF seal will be on the wall, and the University of South Florida will appear in large letters across the top of the wall. Once the sign is up, visitors should no longer ask, "Where are the bird shows?"

University of Tampa—Final exams were held last Monday through Friday for TU students. Commencement services are planned for this morning at 10 a.m. at the Britton Theater.

Florida State University—Saturday 706 students received bachelor of science degrees, 129 bachelors of arts degrees, and nine students bachelor of music degrees. One hundred and thirty-seven candidates received masters degrees, and 37 doctorate degrees.

Florida Southern College—The 119th annual Florida Methodist Conference has been scheduled at Florida Southern, June 5-9. Speaking at the conference will be Gov. Farris Bryant and the Rev. Jessie Engle of the Methodist Board of Missions in New York.

University of Miami—Telephone curfew in the girls dorms has been cut one half-hour, from 11:30 until 11 p.m. The cut was blamed on the girls lack of cooperation at getting off the phone at the assigned time.

Florida Presbyterian College—A \$219,000 bequest and a \$109,000 matching grant have been given to FPC by Mrs. E. Earl Elliot, who resided in St. Petersburg until her recent

death. The matching grant was offered by an anonymous donor.

University of Florida—Phi Beta Kappa initiates became members of the national scholastic honorary society at a banquet held recently in the Student Service Center. The 21 initiates include two alumni and nine graduating students.

Florida Gulf Coast Art Center—For the first time since the mid-50s the campus at the FGCC will be open to students during the summer months.

University of Tampa—The University of Tampa has received a check for \$1,000 from the United States Steel Corp. This unrestricted grant is part of U.S. Steel's aid to education program. The university has been the recipient of this grant for five years.

Florida Southern College—Sandy Smith of Sarasota, president of the Women's Student Government Association, has announced that the freshmen women next school year will

have many new and more lenient rules.

Florida State University—A new fellowship from the U.S. Steel Foundation is now available at FSU for graduate study in the fields of music, child development or meteorology. Applications will be accepted by the acting dean of the graduate school, Dr. T. R. Lewis.

Florida Presbyterian College—FPC's scholarship fund has surged upward with announcement of eight new \$500 awards to be granted each year by the Selby Foundation of Sarasota in the area of math and science.

University of Miami—Several University of Miami students are reported missing in action in Cuba. One, Joe Fernandez, is reported to have been a pilot of one of the B26 bombers shot down on "Invasion Day."

University of Florida—Cmdr. Alan Shepard, first American space astronaut, is being invited to speak on campus this summer, according to Barry Coleman, head of the summer

school special projects committee.

Florida Southern College—Summer school at Southern will be held from June 12 through Aug. 4. All classes will be concentrated in air-conditioned buildings.

Florida Presbyterian College—An 18-year-old youth so exceptional that he entered FPC before high school graduation has won the "grand prize" of scholastic rating—a National Merit Scholarship.

Jacksonville University—Closed circuit television, transmitting from Swisher auditorium to classrooms in the University Council Building, will begin in the fall. A basic history course will be the pioneer effort.

St. Leo College—History was made June 1 when the first graduating class attended baccalaureate service.

St. Petersburg Junior College—Alumni, 1960-61 graduates, and their families attended the free annual picnic recently at the college.



—Photo by Bill Blalock

THE PURPOSE OF THIS CONFERENCE IS THIS...  
Dr. Howard G. Johnshov, dean of student affairs, explains the purpose of the conference-retreat held recently at Chinsegut Hill. Shown here on the "old front porch" are a few of the 60 some persons, 20 faculty plus more than 40 students, who attended. At the upper left is Dr. Sidney French, to his right behind the dark glasses is Dr. Jean Battle, to his right against the post is Dr. Gil Hertz, and with his Nassau hat is Prof. George Miller. Among the students are Ros Hodgkins, the blonde with her back to the camera, and to the far right is Jim Klapps.



**"MOTHER" MARSHALL, OUR CHAMP, AND THE SILVER**  
Here's the first trophy for the University of South Florida trophy case, when it's built. The trophy, a silver bowl, won by Larry Connors in a regional College Unions Table Tennis Tourney, is admired by Mrs. Phyllis Marshall, USF head resident, and housemother to the girls' dorm. The bowl is about two-quart size or would hold some 2½ pounds of unshelled peanuts.

## 'Old' Chinsegut Hill Fitting for Retreat

By BILL BLALOCK JR.  
Chinsegut Hill, which translated from Eskimo means "where things of the spirit which have been lost are rediscovered," was a fitting location for the first USF student-staff conference-retreat held Saturday, May 27. Students and staff from the university gathered at the historic and awe-inspiring home of the late Col. Raymond Robins near Brooksville for the first planning conference where students, faculty members, and staff could look objectively at the year's work and plan for the next.

The large mansion atop the second highest point in the state and the surrounding grounds impressed students and staff alike as the prototype of the Southern plantation.

The 14-room house and surrounding acreage is now being used by the university as its botanical research center. The mansion is used to house visiting scientists as a center for research in botany and related fields.

The 2,000 acres surrounding Chinsegut Hill were turned over to the federal government by Col. Robins and his wife in the early 1930s. The house and the surrounding 14 acres were also turned over to the government when Col. Robins died in 1954.

**Noted for Experiments**  
Other than for the Lenin plaque hubbub last April, in which a plaque commemorating Nikolai Lenin and the Russian revolution was ordered removed from the grounds, Chinsegut Hill is noted for agricultural experiments conducted by the state of Florida in conjunction with the federal government.

Chinsegut is one of 12 federal field stations in the United States where animal husbandry experiments are being conducted. It also serves as a wildlife refuge and a forest as well as a research center.

**Fortune in Gold Fields**  
Dr. John S. Allen, president of the university, explained why an Eskimo word had traveled so far south. He said Col. Robins had made a fortune in the Alaskan gold fields and the term was a carryover from those days.

Dr. John S. Allen, president of the university, explained why an Eskimo word had traveled so far south. He said Col. Robins had made a fortune in the Alaskan gold fields and the term was a carryover from those days.

Chinsegut Hill, which translated from Eskimo means "where things of the spirit which have been lost are rediscovered," was a fitting location for the first USF student-staff conference-retreat held Saturday, May 27. Students and staff from the university gathered at the historic and awe-inspiring home of the late Col. Raymond Robins near Brooksville for the first planning conference where students, faculty members, and staff could look objectively at the year's work and plan for the next.

The large mansion atop the second highest point in the state and the surrounding grounds impressed students and staff alike as the prototype of the Southern plantation.

The 14-room house and surrounding acreage is now being used by the university as its botanical research center. The mansion is used to house visiting scientists as a center for research in botany and related fields.

The 2,000 acres surrounding Chinsegut Hill were turned over to the federal government by Col. Robins and his wife in the early 1930s. The house and the surrounding 14 acres were also turned over to the government when Col. Robins died in 1954.

**Noted for Experiments**  
Other than for the Lenin plaque hubbub last April, in which a plaque commemorating Nikolai Lenin and the Russian revolution was ordered removed from the grounds, Chinsegut Hill is noted for agricultural experiments conducted by the state of Florida in conjunction with the federal government.

Chinsegut is one of 12 federal field stations in the United States where animal husbandry experiments are being conducted. It also serves as a wildlife refuge and a forest as well as a research center.

**Fortune in Gold Fields**  
Dr. John S. Allen, president of the university, explained why an Eskimo word had traveled so far south. He said Col. Robins had made a fortune in the Alaskan gold fields and the term was a carryover from those days.

Dr. John S. Allen, president of the university, explained why an Eskimo word had traveled so far south. He said Col. Robins had made a fortune in the Alaskan gold fields and the term was a carryover from those days.

Dr. John S. Allen, president of the university, explained why an Eskimo word had traveled so far south. He said Col. Robins had made a fortune in the Alaskan gold fields and the term was a carryover from those days.

## Planning Together For Fall

(Continued from Page 1)

level; that attendance at free hour concerts and lectures improve; and that facilities be provided for commuting students so that they may stay overnight or for a weekend on campus.

**Bound to Improve**  
There was not much criticism of the instruction, except that often professors were teaching in subjects outside their specialized fields. Faculty and administration assured students at the conference that this difficulty would iron itself out as professors are evaluated and placed where they will be most effective.

The fourth question (How to be a sophomore?) was answered at the conference in this way. The spirit of friendliness and the theme of "accent on learning" must be communicated to incoming freshmen, and it is the responsibility of the sophomores to do this. The civic units, and open house during the first week of school, which are already in the plans for next year, will aid in indoctrinating the freshmen.

**Long Range Plans**  
Long range plans discussed at the conference included exchange students, maintaining high standards when there are 10,000 students on campus, whether or not to have fraternities and sororities, and the possibility of a tri-semester plan.

**Arctic Starts Another Tradition**  
The Arcti men's social club has started another tradition here at USF. This time it concerns the engagement of Arctes. At the announcement of his engagement, an Arcti will be given an informal party, which will also include a free trip to the Hillsborough River. The lucky girl, whoever she may be, will receive at the time the party is being held a bouquet of 13 roses, one for each pearl in their pin.

The first couple to be so honored was Dianne Fernandez and Steve Sloan. There is a rumor that Winston Lynn will soon be in the need of swimming lessons, also.

To end their social sessions for this year, a party was held at Indian Rocks Beach recently. The Arctes have also completed painting the children's ward of the TB Hospital.

At their banquet last week at the Kapok Tree Inn, the Fides presented fellow member, Cathy Edwards with a check for \$70 dollars. The check was given to help cover some of the medical expenses Cathy incurred practicing for the Delphi - Fides "Powderpuff football game."

Siges, women's social club, has decided on their official club colors, motto and pin. The colors, green and white will be used on sweatshirts and blazers which will be ordered in the near future.

The pin consists of a four-cornered star entwined with the letter "S." Siges will meet bi-monthly during the summer.

## EDITORIAL

### Student Interest Questioned

A primary force in the editorial policy of the Campus Edition has been one of aiding in the development of student rights. Reasoning behind this is simple: It was believed that the students possessed the intelligence, maturity, judgment, ability and interest to govern themselves. This is becoming a very difficult generalization to put much belief in.

The recent ratification of the Student Association constitution added to the scales on the opposite side... the side which would call for a weighted administration control of all student functions. Why? Not because the constitution was not ratified, or that it was particularly weak overall or in parts, but because of the extremely poor showing of interest in any form of student government, as witnessed by the vote.

Though a new staff of newswriters will greet you this summer and next fall, it is believed the editorial policy of your Campus Edition will remain constant. However, it does weaken the position of any writer to take definite stands behind a student body that refused to accept every opportunity placed at their disposal to prove that they do possess the traits necessary to deserve such rights.

It is difficult to determine where the weakness lies. Is it a problem of communication, of leadership, or of individual interests? Each 'student-citizen' of USF is responsible to himself and to the university. The right to vote is also a duty owed not only to oneself but to one's fellow students.

Surely there will be a great deal of pride felt when our underclassmen arrive in the fall and we tell them of the Student Association and of the interest shown in ratification of its constitution... by the landslide vote of just slightly more than 1/6 of the student population! — J. D.

## SOCIAL ACTIVITIES—

### Banquets, Elections Ends Social Season

By VIRGINIA MONTES

One thing that everyone here at USF has to admit is the fact that fraternity and sorority life (oops, social club life that is) has certainly grown; from a -0 to a plus 300.

Remember last September when we first opened, no one had ever heard of Arcti, Fides, Epelta, or Ethelontes. Today, however the number of social clubs on campus has grown to about 12 (and there are still more forming); and the names Tri-SIS, Paideia Cieo, Enotas and Delphi have become commonplace.

These clubs are active, busy, growing and probably the most popular of all clubs on campus. As this social year comes to a close, the social clubs look ahead to an active, prosperous, and growing summer, and to certainly a more active and prosperous fall semester.

Most social clubs have decided on the fraternity or sorority which they will become and many plan to move much closer to this during the fall rush. Several are now affiliated with fraternities or sororities at the University of Florida.

**Cieo To Hold First Rush Party**  
The Cieo men's social club will hold the first rush party of the fall social season. This will be held Sunday, Oct. 15. The Ethelontes women are now making plans for several beach parties this summer. Ordering of pins is also being discussed.

At the recent Delphi banquet, the following members helped in its planning by taking charge of the various chores. Sandie deDeigo, handled invitations; Jo de Alvarez, program; Norma Perzia, decorations and table arrangements; Cynthia Lima, guest list; Marilyn Pike, Andri Holland, guest speaker; and Jan Harper was in charge of installations.

A car wash will be held on June 16, from 9 to 5 at the Standard Oil Co. on Henderson and Dale Mabry. A donut sale is also planned for the near future.

The Tri-SIS women's social club have elected officers for the coming year. The new officers are: Suzanne Jennings, president; Diana Martino, vice president; Donna Kortas, secretary; Linda Leto, treasurer; Sandra Marti, parliamentarian; Vilama Reigo, historian; and Sharon Tarson, chaplain.

The Tri-SIS women's social club held an informal beach party at Clearwater Beach on Memorial Day. Arcti Starts Another Tradition  
The Arcti men's social club has started another tradition here at USF. This time it concerns the engagement of Arctes. At the announcement of his engagement, an Arcti will be given an informal party, which will also include a free trip to the Hillsborough River. The lucky girl, whoever she may be, will receive at the time the party is being held a bouquet of 13 roses, one for each pearl in their pin.

The first couple to be so honored was Dianne Fernandez and Steve Sloan. There is a rumor that Winston Lynn will soon be in the need of swimming lessons, also.

To end their social sessions for this year, a party was held at Indian Rocks Beach recently. The Arctes have also completed painting the children's ward of the TB Hospital.

At their banquet last week at the Kapok Tree Inn, the Fides presented fellow member, Cathy Edwards with a check for \$70 dollars. The check was given to help cover some of the medical expenses Cathy incurred practicing for the Delphi - Fides "Powderpuff football game."

Siges, women's social club, has decided on their official club colors, motto and pin. The colors, green and white will be used on sweatshirts and blazers which will be ordered in the near future.

The pin consists of a four-cornered star entwined with the letter "S." Siges will meet bi-monthly during the summer.

## USF Choir's Concert Is Inspiring

By JOE CASTELLANO  
The University Choir and the University - Community Chorus presented a concert with R. Wayne Hugoboom, director, Sunday, May 28, in the Teaching Auditorium-Theatre.

The university choir presented three selections in German from Cantata No. 71 by J. S. Bach, "God Is My King." Presented by the combined choirs were three short selections, "Praise the Lord" by Latham, "Let Thy Holy Presence" by Tchesnokov, and "Ezekiel Saw de Wheel" by Dawson. The major work performed by the combined choirs was the "Mass in G" by Schubert.

Showing only small signs of strain, the choir overcame difficult Bach passages with the necessary vigor and solemnness. The three short selections by Latham, Tchesnokov, and Dawson were performed with elegance and vivacity.

The program was highlighted by Schubert's "Mass in G." This work, included brilliant solos by Mrs. Dorothy Starling, soprano, Jack Smith, tenor, and Thomas O'Kelly, baritone.

Also included were members of the University Symphony Orchestra giving a fine performance with the choir. The orchestra and soloists blended and balanced well with the choir.

The polyphonic devices used by Schubert gave the performance an opportunity to display their virtuosity and musicianship. As a whole, the entire concert was thrilling.

Hugoboom and the performers should be commended for their splendid performance. Summarizing the concert in two words, it was "magnificent and inspiring."

## Official Notices

USED BOOKS will be purchased in the UC Art Gallery, June 8-9. LIBRARY BOOKS are due not later than June 10.

ALL FACULTY are asked to be present on campus, Sept. 5, for beginning of orientation and advising program.

STUDENT will share room in her home with another girl. Kitchen privileges, \$3 a week. Phone: 25-0752.

**Flowers for the GRAD**  
CALL NELSON  
"The Florist"  
514 Tampa St. Ph. 2-2776

## The Tampa Times

University of South Florida Campus Edition  
(Page 1 and Page 2 Staff)

Editor ..... Betty J. Woodard  
Managing Editor ..... Rodney H. Kite-Powell  
Intramural Editor ..... John Gullett  
Faculty Adviser ..... George H. Miller  
Other staff members: Carol Martin, Bill Blalock, Martha Jean Ekker, Wing Preodor, Virginia Montes and Jim Dixon.  
Address all communications to Office of Campus Publications, Room 224, University Center. Phone WE 8-4131, Ext. 118.

## Tampa U. Triumphs In Tennis

The University of Tampa Tennis Club, the first off-campus team to play on USF's new courts, made no bones about it in the Thursday, May 25, extramural match as they downed their hosts, 4-3.

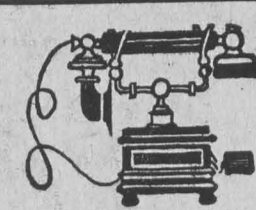
A total of 12 sets were played between singles players from USF and TU, in addition to five doubles plays. USF's victories all came in singles play: Larry Touzeau downed George Shary, 6-2, 2-6, 6-4; Frank Hancock beat Dick Plom, 6-4, 6-1; Dick Bachman eliminated Pomad Nassim, 6-2, 4-6, 6-1.

USF players posting marks in the loss column include: Mark Storrs and Tony Moore; doubles, Bachman and Hancock, Dave Aycock and Reggie Sedita.

Richard Hunter, physical education professor and coordinator of the event, expressed a strong possibility of increased activity between the two universities on the extramural level in the fall.

## LEO BATELL, M.D.

Announces the Removal of His Office To The TEMPLE TERRACE PROFESSIONAL BLDG. 211 Bullard Parkway  
INFANTS and CHILDREN By Appointment WE 8-1181



PHONE TODAY FOR DECORATOR SERVICE

Whether your problem is a complete face lifting for your home or brightening a neglected corner... the expert advice of Maas Brothers decorators is at your command... at no extra cost to you!

Phone Tampa 65-1511



Gandy Blod. "Store for Homes". Tampa

## Frankly.....

We urgently advise you to buy "Ofedex" Brand Silk Ribbons and Carbon Paper. If you like beautifully typed letters and clear carbons—you'll fall in love with "Ofedex"

**FULGHUM'S**  
PHONE 2-3708

## THE INDUSTRIAL SAVINGS BANK IN TAMPA, FLORIDA

HOW YOU CAN MAKE MORE MONEY THE DAILY INTEREST WAY!

In this comparative example of a fluctuating savings balance... where the depositor has made periodic withdrawals and deposits in his savings account... you will notice that in The Industrial Saving's DAILY INTEREST PLAN he gets interest on every cent of his savings for each and every day his savings were with The Industrial Savings Bank, whereas under the "low balance" method of computing interest, the chart shows he would get interest ONLY on the LOWEST balance of \$500 for the entire 6 months period.

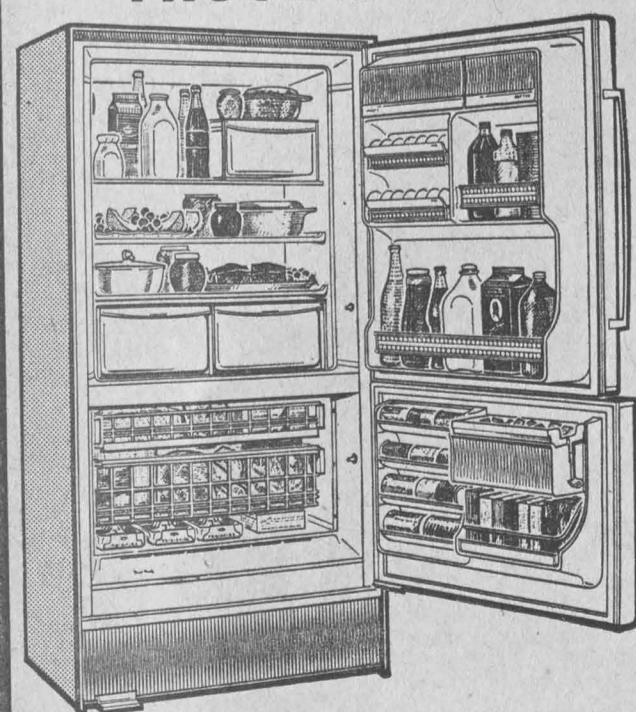
PERIOD	YOUR SAVINGS BALANCE	YOUR INTEREST IN THE INDUSTRIAL SAVINGS DAILY INTEREST PLAN for 6 Months	YOUR INTEREST under LOW-BALANCE BASIS for 6 Months
June 1 thru July 15	\$4,000	\$14.99	
July 16 thru Aug. 21	3,000	9.00	
Aug. 22 thru Sept. 18	500	1.12	
Sept. 19 thru Oct. 22	6,000	16.99	
Oct. 23 thru Nov. 27	3,500	10.20	
Nov. 28 thru Nov. 30	2,000	.50	
		<b>\$52.80</b>	
		Accumulation of each day's interest which your savings earned during the entire 6 month period.	
			<b>\$7.50</b>
			Amount of interest paid on just the lowest balance of \$500 during the entire 6 month period.

As the above example clearly proves...

DAILY INTEREST allows you to withdraw any amount of your savings at any time... and still receive ALL THE INTEREST your money earned until withdrawal. In contrast, under the LOW-BALANCE method of computing interest, the chart shows you LOSE all the interest your savings have earned on the amount you withdrew.

**THE INDUSTRIAL SAVINGS BANK**  
IN TAMPA, FLORIDA  
MADISON & MORGAN DRIVE IN WINDOW MEMBER F.D.I.C.

## NOW NATIONAL FRIGIDAIRE WEEK



Your Chance To Get THE Refrigerator-Freezer

YOU'VE BEEN WANTING AT A PRICE YOU'LL WANT TO PAY!

NO FROST EVER IN THE REFRIGERATOR OR THE FREEZER!

YOU CAN'T BEAT OUR PRICES!  
YOU CAN'T BEAT OUR QUALITY!  
YOU CAN'T BEAT OUR SERVICE!

**TAMPA RADIO SALES, INC.**  
TELEVISION SERVICE APPLIANCES  
809 FLORIDA AVE. PHONE 2-1527

THE TAMPA TIMES  
Published evenings Monday through Saturday by The Tribune Company from The Tribune Building, Lafayette and Morgan Streets, Tampa, Florida. Entered as second class matter at the Post Office at Tampa, Florida, under the Act of March 3, 1879.  
Subscription Rates: By carrier 36¢ per week; by mail three months \$3.90; six months \$7.80, one year \$15.60. Subscription payable in advance. Member of Associated Press. Member of Audit Bureau of Circulation.

**WALTERS-HOWARD FUNERAL SERVICE**  
OPPOSITE UNIV. OF TAMPA

Today  
NEVER WAVE AT A WAC.  
4:30 p.m. (8). Amusing comedy that looks at life in the Army, from the feminine side.

BROKEN STAR, 11:30 p.m.  
(13). A U.S. deputy marshal murders a rancher for gold and tries to explain the killing as self defense. Howard Duff stars.

Tuesday  
THIS IS MY LOVE, 9 a.m.  
(8). A romantic frustration of two sisters who fall in love with the same man. Linda Darnell stars.

WEDU—(ETV)  
Channel 3—Tampa

6:00 The Written Word  
6:30 Pageant  
7:00 Frontiers of Science  
7:30 The FIRST R  
8:00 Within the Family  
8:30 Young Worlds  
9:00 TBA  
9:30 Heritage  
10:00 American Perspective  
10:30 Industry on Parade  
10:45 Off the Air

Tuesday  
8:50 This Western World  
9:15 School News  
9:30 The FIRST R  
9:40 Science in Our World  
10:00 Tele-Math  
10:25 People and Places  
10:45 United States History  
11:10 The Science of Life  
11:40 Music by Americans  
11:50 American History  
12:20 Kindergarten Corners  
12:50 Concert Hall  
1:05 Hablemos Espanol  
1:30 Science in Our World  
2:00 Quickstep  
2:20 This Western World  
2:45 Our Fascinating World  
3:10 Musical Interlude  
3:15 Bulletin Board  
3:50 Homemaking Today  
4:00 Young Worlds  
4:30 The Red Myth  
4:50 Denny Dee  
5:30 Quest for Adventure.

## ADVERTISEMENT

Bus Fair  
BUY 4U OLSALE ANYTHING NEW USED

Vogue AWNINGS  
BY  
SEA VIEW  
NO MONEY DOWN  
3 YEARS TO PAY  
For Free Estimate Call  
RE 6-0024

DON'T FIDDLE AROUND!  
We loan you a set it yours requires shop work.  
CALL 32-9251  
33-2291  
31-3831  
AMERICAN  
RADIO...TELEVISION  
2907 E. Hillsborough Ave.

Shoe Repair  
Now thru Thurs!  
SPECIAL!  
Men's - Women's - Children's  
HALF SOLES  
Leather or Composition  
\$1.79  
Men's Rubber HEELS 89¢  
Ladies' Heel LIFTS 39¢  
(Spikes or Cuban)  
While You Wait! All Work Guaranteed  
NEISNER'S SHOE REPAIR  
NORTH GATE SHOPPING CENTER  
TAMPA, FLA.

GULF PRESENTS AN

GULF  
NBC NEWS SPECIAL

"JFK REPORT NO. 8: FROM VIENNA TO LONDON"

TONIGHT AT 10:30  
ON CHANNEL 8

Work Span Longer  
NEW YORK UPI—The average length of working life for American males has increased by more than one-third since 1900, from about 31 to 42 years, the Health Information Foundation reports.

FREE TV SERVICE CALL  
FIRST CALL FREE  
PAY FOR PARTS ONLY  
CITY-WIDE SERVICE  
Sav-A-Call TV Service  
Day—Ph. 42-4161—Nite

## S BEST ONIGHT

## Kennedy's Trip

8-13-38 — PRESIDENT KENNEDY'S TRIP TO EUROPE. ALL NETWORKS. Programs will provide evaluations and roundups of the summit conferences in Paris with President De Gaulle, Vienna with Premier Khrushchev and London with Prime Minister Macmillan. "Presidential Mission," on ABC, is scheduled for 11:15 p.m. with Bill Shadel as host. "JFK," on NBC, is scheduled for 10:30 p.m. with Frank McGee as anchor man; "The Kennedy Mission," on CBS, is scheduled for 8 with Charles Collingwood as anchor man.

9 P.M.

13—DANNY THOMAS SHOW, CBS. Re-run, "You Can Fight City Hall." Danny sets out to defend himself against a parking ticket.

## Radio Programs

WFLA 970 NBC	WDAE 1250 CBS	WSUN 620 ABC	WHBO 1050 MBS
<b>Monday Evening</b>			
6:00—Fla. Story News 6:15—News, Fla. With. 6:30—Musical 970 6:45—3-Star Extra	6:00—News, View 6:15—News, Fla. With. 6:30—Legislative News 6:45—3-Star Extra	6:00—News, Sports 6:15—Paul Harvey 6:30—Fishing, With. 6:45—Sunset Trail	6:00—Sunset Trail 6:15—Paul Harvey 6:30—Fishing, With. 6:45—Sunset Trail
7:00—News, Indepth 7:15—Album of Music 7:30—News of World 7:45—Art of Living	7:00—News, View 7:15—News, Fla. With. 7:30—Tower Nocturne 7:45—Art of Living	7:00—News, Sports 7:15—Paul Harvey 7:30—Fishing, With. 7:45—Sunset Trail	7:00—Sunset Trail 7:15—Paul Harvey 7:30—Fishing, With. 7:45—Sunset Trail
8:00—News, Fredericks 8:15—Carlton Fredericks 8:30—JFK in Europe 8:45—JFK in Europe	8:00—News, Fredericks 8:15—Carlton Fredericks 8:30—JFK in Europe 8:45—JFK in Europe	8:00—News, Sports 8:15—Paul Harvey 8:30—Fishing, With. 8:45—Sunset Trail	8:00—Sunset Trail 8:15—Paul Harvey 8:30—Fishing, With. 8:45—Sunset Trail
9:00—Family Living '61 9:15—Family Living '61 9:30—Best of Interlochen 9:45—Best of Interlochen	9:00—Family Living '61 9:15—Family Living '61 9:30—Best of Interlochen 9:45—Best of Interlochen	9:00—News, Sports 9:15—Paul Harvey 9:30—Fishing, With. 9:45—Sunset Trail	9:00—Sunset Trail 9:15—Paul Harvey 9:30—Fishing, With. 9:45—Sunset Trail
10:00—News, Galaxy 10:15—Galaxy 10:30—Night Report 10:45—Night Report	10:00—News, Galaxy 10:15—Galaxy 10:30—Night Report 10:45—Night Report	10:00—News, Sports 10:15—Paul Harvey 10:30—Fishing, With. 10:45—Sunset Trail	10:00—Sunset Trail 10:15—Paul Harvey 10:30—Fishing, With. 10:45—Sunset Trail
11:00—News, Galaxy 11:15—Galaxy 11:30—Stereo Silhouettes 11:45—Stereo Silhouettes	11:00—News, Galaxy 11:15—Galaxy 11:30—Stereo Silhouettes 11:45—Stereo Silhouettes	11:00—News, Sports 11:15—Paul Harvey 11:30—Fishing, With. 11:45—Sunset Trail	11:00—Sunset Trail 11:15—Paul Harvey 11:30—Fishing, With. 11:45—Sunset Trail
12:00—Sign Off	12:00—Sign Off	12:00—Sign Off	12:00—Sign Off

## Tuesday Morning

WFLA 970 NBC	WDAE 1250 CBS	WSUN 620 ABC	WHBO 1050 MBS
<b>Tuesday Morning</b>			
6:45—Strength of Day 6:00—News, Serenade 6:15—Gulf Coast Serenade 6:30—Gulf Coast Serenade 6:45—Music, Fishing	6:45—Strength of Day 6:00—News, Serenade 6:15—Gulf Coast Serenade 6:30—Gulf Coast Serenade 6:45—Music, Fishing	6:45—Strength of Day 6:00—News, Serenade 6:15—Gulf Coast Serenade 6:30—Gulf Coast Serenade 6:45—Music, Fishing	6:45—Strength of Day 6:00—News, Serenade 6:15—Gulf Coast Serenade 6:30—Gulf Coast Serenade 6:45—Music, Fishing
7:00—News, Names 7:15—Gulf Coast Serenade 7:30—Gulf Coast Serenade 7:45—Morning Report	7:00—News, Names 7:15—Gulf Coast Serenade 7:30—Gulf Coast Serenade 7:45—Morning Report	7:00—News, Sports 7:15—Paul Harvey 7:30—Fishing, With. 7:45—Sunset Trail	7:00—Sunset Trail 7:15—Paul Harvey 7:30—Fishing, With. 7:45—Sunset Trail
8:00—Weather, News 8:15—News, Serenade 8:30—Gulf Coast Serenade 8:45—Gulf Coast Serenade	8:00—Weather, News 8:15—News, Serenade 8:30—Gulf Coast Serenade 8:45—Gulf Coast Serenade	8:00—News, Sports 8:15—Paul Harvey 8:30—Fishing, With. 8:45—Sunset Trail	8:00—Sunset Trail 8:15—Paul Harvey 8:30—Fishing, With. 8:45—Sunset Trail
9:00—News, Emphasis 9:15—Serenade 9:30—News, Serenade 9:45—Gulf Coast Serenade	9:00—News, Emphasis 9:15—Serenade 9:30—News, Serenade 9:45—Gulf Coast Serenade	9:00—News, Sports 9:15—Paul Harvey 9:30—Fishing, With. 9:45—Sunset Trail	9:00—Sunset Trail 9:15—Paul Harvey 9:30—Fishing, With. 9:45—Sunset Trail
10:00—News, Party 10:15—Party Line 10:30—Arthur Godfrey 10:45—Triangle Trader	10:00—News, Party 10:15—Party Line 10:30—Arthur Godfrey 10:45—Triangle Trader	10:00—News, Sports 10:15—Paul Harvey 10:30—Fishing, With. 10:45—Sunset Trail	10:00—Sunset Trail 10:15—Paul Harvey 10:30—Fishing, With. 10:45—Sunset Trail
11:00—News, Encore 11:15—Encore 11:30—Emphasis, News 11:45—Encore	11:00—News, Encore 11:15—Encore 11:30—Emphasis, News 11:45—Encore	11:00—News, Sports 11:15—Paul Harvey 11:30—Fishing, With. 11:45—Sunset Trail	11:00—Sunset Trail 11:15—Paul Harvey 11:30—Fishing, With. 11:45—Sunset Trail

## Tuesday Afternoon

WFLA 970 NBC	WDAE 1250 CBS	WSUN 620 ABC	WHBO 1050 MBS
<b>Tuesday Afternoon</b>			
12:00—News, Farm Hour 12:15—WFLA Farm Hour 12:30—Emphasis, News 12:45—News 970	12:00—News, Farm Hour 12:15—WFLA Farm Hour 12:30—Emphasis, News 12:45—News 970	12:00—News, Sports 12:15—Paul Harvey 12:30—Fishing, With. 12:45—Sunset Trail	12:00—Sunset Trail 12:15—Paul Harvey 12:30—Fishing, With. 12:45—Sunset Trail
1:00—News, Emphasis 1:15—Emphasis 1:30—News, Rhapsody 1:45—Rhapsody	1:00—News, Emphasis 1:15—Emphasis 1:30—News, Rhapsody 1:45—Rhapsody	1:00—News, Sports 1:15—Paul Harvey 1:30—Fishing, With. 1:45—Sunset Trail	1:00—Sunset Trail 1:15—Paul Harvey 1:30—Fishing, With. 1:45—Sunset Trail
2:00—News, Rhapsody 2:15—Rhapsody 2:30—Emphasis, News 2:45—Rhapsody	2:00—News, Rhapsody 2:15—Rhapsody 2:30—Emphasis, News 2:45—Rhapsody	2:00—News, Sports 2:15—Paul Harvey 2:30—Fishing, With. 2:45—Sunset Trail	2:00—Sunset Trail 2:15—Paul Harvey 2:30—Fishing, With. 2:45—Sunset Trail
3:00—News, Bennett 3:15—Roger Bennett 3:30—Emphasis, Bennett 3:45—Bennett 970	3:00—News, Bennett 3:15—Roger Bennett 3:30—Emphasis, Bennett 3:45—Bennett 970	3:00—News, Sports 3:15—Paul Harvey 3:30—Fishing, With. 3:45—Sunset Trail	3:00—Sunset Trail 3:15—Paul Harvey 3:30—Fishing, With. 3:45—Sunset Trail
4:00—News, Bandstand 4:15—Bandstand 970 4:30—Emphasis, News 4:45—Bandstand 970	4:00—News, Bandstand 4:15—Bandstand 970 4:30—Emphasis, News 4:45—Bandstand 970	4:00—News, Sports 4:15—Paul Harvey 4:30—Fishing, With. 4:45—Sunset Trail	4:00—Sunset Trail 4:15—Paul Harvey 4:30—Fishing, With. 4:45—Sunset Trail
5:00—News, Bandstand 5:15—Bandstand 970 5:30—Bus, News 5:45—Special Edition	5:00—News, Bandstand 5:15—Bandstand 970 5:30—Bus, News 5:45—Special Edition	5:00—News, Sports 5:15—Paul Harvey 5:30—Fishing, With. 5:45—Sunset Trail	5:00—Sunset Trail 5:15—Paul Harvey 5:30—Fishing, With. 5:45—Sunset Trail

## TAMPA STATIONS

WFLA — 970 AC	WFLA-FM — 93.3 MC	WALT — 1110 KC
WTSP — 1150 KC	WDAE-FM — 100.7 MC	WSOL — 1300 KC
WIRG — 1080 KC	WDAE — 104.7 MC	WINQ — 1010 KC
WSTZ — 1550 KC	WTUN-FM — 88.9 MC	

## WEST COAST STATIONS

WSUN — 620 KC	WILY — 1380 AC	WLAK — 1430 KC	WTXX-FM — 99.5 MC
WONN — 1230 KC	WSPF — 1430 KC	WRXY — 930 KC	WTAN — 1340 KC
WFLA — 970 KC	WGTO — 540 KC	WFIN — 680 KC	WBRD — 1430 KC
WCLL — 1470 KC	WZLW — 1250 KC	WTRB — 1490 KC	WTLN — 1400 KC
WILZ — 1500 KC	WAZE — 880 KC	WINT — 1380 KC	WYAK-FM — 102.5 MC

## Television Programs

WFLA-TV Channel 8	WTVT-TV Tampa Channel 13	WSUN-TV St. Petersburg Channel 35	WDDB-TV Orlando Channel 6
<b>Monday Evening</b>			
6:00—Assign. Underwater 6:15—Assign. Underwater 6:30—Jerry Harper, News 6:45—Huntley-Brinkley	6:00—Assign. Underwater 6:15—Assign. Underwater 6:30—Jerry Harper, News 6:45—Huntley-Brinkley	6:00—Assign. Underwater 6:15—Assign. Underwater 6:30—Jerry Harper, News 6:45—Huntley-Brinkley	6:00—Assign. Underwater 6:15—Assign. Underwater 6:30—Jerry Harper, News 6:45—Huntley-Brinkley
7:00—Brothers Brannagan 7:15—Brothers Brannagan 7:30—The Americans 7:45—The Americans	7:00—Brothers Brannagan 7:15—Brothers Brannagan 7:30—The Americans 7:45—The Americans	7:00—Brothers Brannagan 7:15—Brothers Brannagan 7:30—The Americans 7:45—The Americans	7:00—Brothers Brannagan 7:15—Brothers Brannagan 7:30—The Americans 7:45—The Americans
8:00—The Americans 8:15—The Americans 8:30—Wells Fargo 8:45—Wells Fargo	8:00—The Americans 8:15—The Americans 8:30—Wells Fargo 8:45—Wells Fargo	8:00—The Americans 8:15—The Americans 8:30—Wells Fargo 8:45—Wells Fargo	8:00—The Americans 8:15—The Americans 8:30—Wells Fargo 8:45—Wells Fargo
9:00—Whispering Smith 9:15—Whispering Smith 9:30—Concentration 9:45—Concentration	9:00—Whispering Smith 9:15—Whispering Smith 9:30—Concentration 9:45—Concentration	9:00—Whispering Smith 9:15—Whispering Smith 9:30—Concentration 9:45—Concentration	9:00—Whispering Smith 9:15—Whispering Smith 9:30—Concentration 9:45—Concentration
10:00—Barbara Stanwyck 10:15—Barbara Stanwyck 10:30—Miami Undercover 10:45—Miami Undercover	10:00—Barbara Stanwyck 10:15—Barbara Stanwyck 10:30—Miami Undercover 10:45—Miami Undercover	10:00—Barbara Stanwyck 10:15—Barbara Stanwyck 10:30—Miami Undercover 10:45—Miami Undercover	10:00—Barbara Stanwyck 10:15—Barbara Stanwyck 10:30—Miami Undercover 10:45—Miami Undercover
11:00—Arch Deal News 11:15—Jack Paar 11:30—Jack Paar 11:45—Jack Paar	11:00—Arch Deal News 11:15—Jack Paar 11:30—Jack Paar 11:45—Jack Paar	11:00—Arch Deal News 11:15—Jack Paar 11:30—Jack Paar 11:45—Jack Paar	11:00—Arch Deal News 11:15—Jack Paar 11:30—Jack Paar 11:45—Jack Paar
12:00—Jack Paar 12:15—Jack Paar 12:30—Jack Paar	12:00—Jack Paar 12:15—Jack Paar 12:30—Jack Paar	12:00—Jack Paar 12:15—Jack Paar 12:30—Jack Paar	12:00—Jack Paar 12:15—Jack Paar 12:30—Jack Paar

## Tuesday Morning

WFLA-TV Channel 8	WTVT-TV Tampa Channel 13	WSUN-TV St. Petersburg Channel 35	WDDB-TV Orlando Channel 6
<b>Tuesday Morning</b>			
6:30—PRD Florida 6:45—News, Fla. With.	6:30—PRD Florida 6:45—News, Fla. With.	6:30—PRD Florida 6:45—News, Fla. With.	6:30—PRD Florida 6:45—News, Fla. With.
7:00—Today 7:15—Today 7:30—Today 7:45—Today	7:00—Today 7:15—Today 7:30—Today 7:45—Today	7:00—Today 7:15—Today 7:30—Today 7:45—Today	7:00—Today 7:15—Today 7:30—Today 7:45—Today
8:00—Today 8:15—Today 8:30—Today 8:45—Today	8:00—Today 8:15—Today 8:30—Today 8:45—Today	8:00—Today 8:15—Today 8:30—Today 8:45—Today	8:00—Today 8:15—Today 8:30—Today 8:45—Today
9:00—Morning Movie 9:15—Morning Movie 9:30—Morning Movie 9:45—Morning Movie	9:00—Morning Movie 9:15—Morning Movie 9:30—Morning Movie 9:45—Morning Movie	9:00—Morning Movie 9:15—Morning Movie 9:30—Morning Movie 9:45—Morning Movie	9:00—Morning Movie 9:15—Morning Movie 9:30—Morning Movie 9:45—Morning Movie
10:00—Morning Movie 10:15—Morning Movie 10:30—Play Your Hunch 10:45—Play Your Hunch	10:00—Morning Movie 10:15—Morning Movie 10:30—Play Your Hunch 10:45—Play Your Hunch	10:00—Morning Movie 10:15—Morning Movie 10:30—Play Your Hunch 10:45—Play Your Hunch	10:00—Morning Movie 10:15—Morning Movie 10:30—Play Your Hunch 10:45—Play Your Hunch
11:00—Price Is Right 11:15—Price Is Right 11:30—Concentration 11:45—Concentration	11:00—Price Is Right 11:15—Price Is Right 11:30—Concentration 11:45—Concentration	11:00—Price Is Right 11:15—Price Is Right 11:30—Concentration 11:45—Concentration	11:00—Price Is Right 11:15—Price Is Right 11:30—Concentration 11:45—Concentration

## Tuesday Afternoon

WFLA-TV Channel 8	WTVT-TV Tampa Channel 13	WSUN-TV St. Petersburg Channel 35	WDDB-TV Orlando Channel 6
<b>Tuesday Afternoon</b>			
12:00—Truth or Conseq. 12:15—Truth or Conseq. 12:30—It Could Be You 12:45—It Could Be You	12:00—Truth or Conseq. 12:15—Truth or Conseq. 12:30—It Could Be You 12:45—It Could Be You	12:00—Truth or Conseq. 12:15—Truth or Conseq. 12:30—It Could Be You 12:45—It Could Be You	12:00—Truth or Conseq. 12:15—Truth or Conseq. 12:30—It Could Be You 12:45—It Could Be You
1:00—News 1:15—Dr. Joyce Brothers 1:30—I Married Joan 1:45—I Married Joan	1:00—News 1:15—Dr. Joyce Brothers 1:30—I Married Joan 1:45—I Married Joan	1:00—News 1:15—Dr. Joyce Brothers 1:30—I Married Joan 1:45—I Married Joan	1:00—News 1:15—Dr. Joyce Brothers 1:30—I Married Joan 1:45—I Married Joan
2:00—Jan Murray 2:15—Jan Murray 2:30—Loretta Young 2:45—Loretta Young	2:00—Jan Murray 2:15—Jan Murray 2:30—Loretta Young 2:45—Loretta Young	2:00—Jan Murray 2:15—Jan Murray 2:30—Loretta Young 2:45—Loretta Young	2:00—Jan Murray 2:15—Jan Murray 2:30—Loretta Young 2:45—Loretta Young
3:00—Young Dr. Malone 3:15—Young Dr. Malone 3:30—From These Roots 3:45—From These Roots	3:00—Young Dr. Malone 3:15—Young Dr. Malone 3:30—From These Roots 3:45—From These Roots	3:00—Young Dr. Malone 3:15—Young Dr. Malone 3:30—From These Roots 3:45—From These Roots	3:00—Young Dr. Malone 3:15—Young Dr. Malone 3:30—From These Roots 3:45—From These Roots
4:00—Room for Daddy 4:15—Room for Daddy 4:30—Early Movie 4:45—Early Movie	4:00—Room for Daddy 4:15—Room for Daddy 4:30—Early Movie 4:45—Early Movie	4:00—Room for Daddy 4:15—Room for Daddy 4:30—Early Movie 4:45—Early Movie	4:00—Room for Daddy 4:15—Room for Daddy 4:30—Early Movie 4:45—Early Movie
5:00—Early Movie 5:15—Early Movie 5:30—Early Movie 5:45—Movie, C. Gargo	5:00—Early Movie 5:15—Early Movie 5:30—Early Movie 5:45—Movie, C. Gargo	5:00—Early Movie 5:15—Early Movie 5:30—Early Movie 5:45—Movie, C. Gargo	5:00—Early Movie 5:15—Early Movie 5:30—Early Movie 5:45—Movie, C. Gargo

## Work Span Longer

NEW YORK UPI—The average length of working life for American males has increased by more than one-third since 1900, from about 31 to 42 years, the Health Information Foundation reports.

## There's More Than Music On Records

By TISH GRAY  
Times Record Review  
THERE IS MORE than music on records today, though I seriously doubt that anything else will ever sell as well. But if you are interested, Columbia has an album, culled from CBS tapes, of Bob Trout's voice describing the historic countdown that sent Comptroller Alan Shepard into space. It comes along with the guttural comments of Dr. Werner Von Braun, describing the Redstone rocket as a "Reliable old verk horse," and finishes off magnificently with the Mormon Tabernacle Choir singing "Battle Hymn of the Republic."

Even in this effort, the United States suffered the blow of being second. On the very day Soviets released the news of Yuri Gagarin's triumph, there was already on wax a Moscow masterwork of his "way-out" trip. Appropriately the record is entitled "Out of This World," but I regret, I know not where by the writing Khrushchev, perhaps? In any case, these are not to be confused with the best seller on the trip into space, done by Charlie Manna on the Decca label.

NOT ONLY HISTORY is available for posterity, there's culture too. Capitol announced last month a release of the distinguished thespian, Charles Laughton, to be entitled, "A Session With Charles Laughton." It will showcase the master in slow spoken, commanding recitals of poetry, selections from the Bible and excerpts from the works of contemporary writers. It's a final with "The Gettysburg Address." Pearls from the NBC-TV program "Wisdom," will also be found on releases by Decca. Two long-laying discs were released in April, with conversations that no one could dispute are historic. In Vol. I, Carl Sandburg, the poet, and Dr. Shapley, astronomer, exchange profound thoughts. Other talks are recorded between Israel's Prime Minister, David Ben-Gurion and Frank Lloyd Wright, architect, and other men of note.

THERE IS PLENTY of comedy, with Stan Freberg calling for attention again on a Capitol release, "Stan Freberg Presents the United States of America." Stan's special gift is a sharp needle that isn't used to mend breaches. Instead, he is better at stirring up turmoil and he's done it again with this album. When he described the Boston Tea Party as an affair where a "bumbling cargo jockey knocked a bunch of tea into the drink," the ladies of the DAR rose up in angry rebellion. In Boston, the fair chapter sent a barrage of letters to local radio stations, demanding that it be kept off the air.

With this ban in Boston, Stan feels certain he has it made, and the album will sell at least a million.

## TELEVISION IN REVIEW

## Play Excerpt Far From Satisfying

By FRED DANZIG  
NEW YORK, June 5 (UPI) — "All the Way Home," a Pulitzer Prize-winning play that is based on "A Death in the Family," a Pulitzer Prize-winning novel, achieved another high honor last night.

It took a bow on "The Ed Sullivan Show." A 10-minute excerpt from the Broadway production was sandwiched between Mort Sahl and singer Leon Bibb on the CBS-TV hour. The sample made for unusual TV, but the impression it left was far from satisfying. Arthur Hill and Lenka Peterson, from the Broadway cast, played the scene in which they unknowingly part for the last time. Hill's performance was not pitched to the requirements of TV and his reading lacked intimacy.

If TV's nighttime rating-and-programming pressures make it impossible to sustain more than a 10-minute slice from a moving play such as "All the Way Home," it would be best, I think, to leave the work alone and unsampled. The fact is that there is no reason why, with proper planning and sufficient confidence, the entire play should not one day honor the TV screen.

The rest of Sullivan's show? Roger Williams demonstrated that finger-popping isn't the exclusive property of our pop singers. He now works the snappy into his piano arrangements. Mort Sahl's routing, like "All the Way Home," was shredded and thin. Program highlights were Ed's asking his audience to applaud the Republic of Panama in honor of jockey Braulio Baeza and Ed's spelling-be-by-play, wherein he scored with "Cantabile" but struck out on "Smaragditte."

"Hello World," an NBC-TV variety hour that starred Janet Blair, deserves credit for reflecting with some accuracy the current global scene: It, too, was hard to figure out. The program consisted of some studio production numbers, the humor of Seneca Venes and his clever ventriloquist act, songs by the Swiss Smeed Trio, a limber "limbo" dancer, and many color film clips that couldn't make past globe-trotting reports submitted by Dinah Shore on her shows.

Along with Tahitian, Portuguese, Balinese and Maori dancers, we were treated to a cha-cha Swiss tune, a rock 'n' roll version of "Yankee Doodle Dandy," and a calypso tune out of Australia. That's show biz. Miss Blair effervesced nicely but on balance it was a catch-all hour that missed more than it caught.

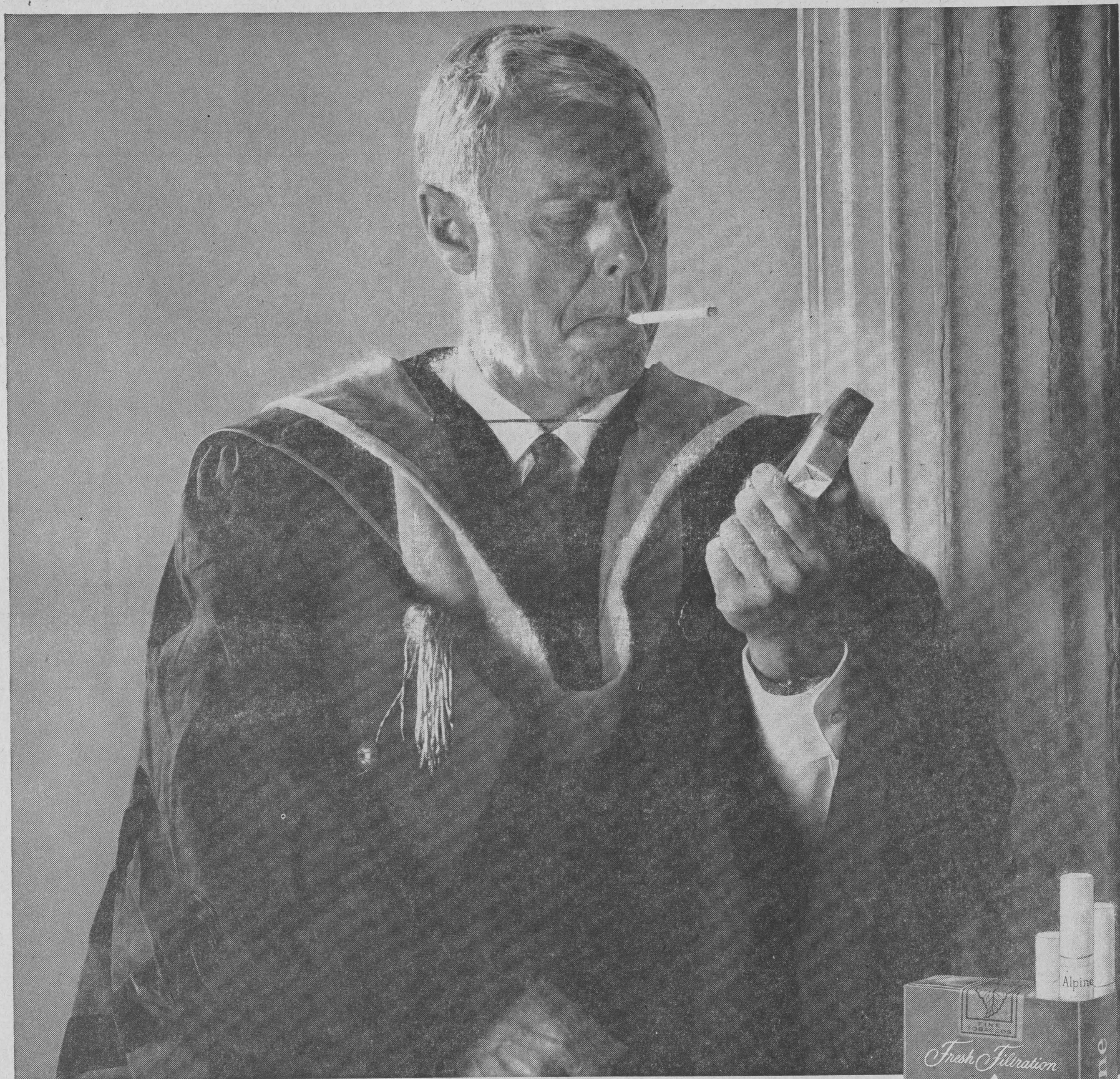
Dialing and Filing: Ed Mur-

## High Court Meets

WASHINGTON, June 5 (UPI) — The Supreme Court meets today to hand down opinions. The court is expected to adjourn for the term in two or three weeks.

NO NO NO CHARGE IF TV SET NOT FIXED AT YOUR HOME FOR \$6 OR LESS Ph. 20-5842

# Who put the men in menthol smoking?

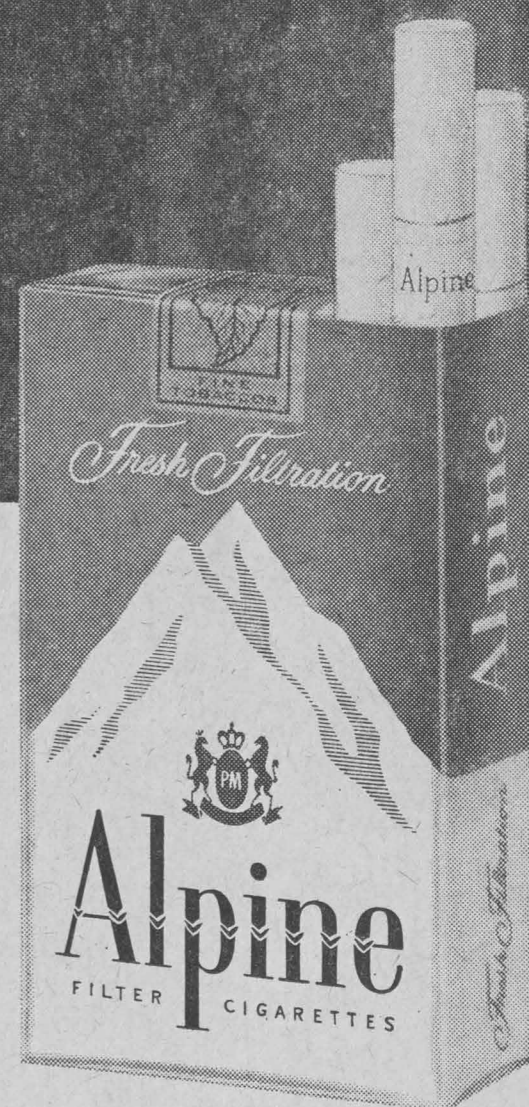


## Alpine—that's who!

Now the menthol cigarette is as much at home in a man's shirt pocket as it is in a woman's handbag...*The reason is Alpine.*

It always tastes rich, never smokes rough. The hearty tobaccos are specially blended for the new way of smoking. They give a man a flavor he can get hold of.

The clear, crisp flavor of Alpine will give your taste a fresh start. And your taste stays clean and moist right down to the end of the pack. *Try Alpine.*



The pleasingly new filter cigarette  
from Philip Morris