

4-24-1961

The Tampa Times: University of South Florida Campus Edition, April 24, 1961

Jim Dixon

Follow this and additional works at: https://digitalcommons.usf.edu/times_campus

Recommended Citation

Dixon, Jim, "The Tampa Times: University of South Florida Campus Edition, April 24, 1961" (1961). *Tampa Times Campus Edition*. 191.

https://digitalcommons.usf.edu/times_campus/191

This Text is brought to you for free and open access by the USF Student Publications at Digital Commons @ University of South Florida. It has been accepted for inclusion in Tampa Times Campus Edition by an authorized administrator of Digital Commons @ University of South Florida. For more information, please contact digitalcommons@usf.edu.

Just Right
Fair through Tuesday.
Variable winds 18
m.p.h. High today and
Tuesday 84. Low tonight
62.

SIXTY-NINTH YEAR—No. 66



THE TAMPA TIMES

TAMPA, FLORIDA, MONDAY, APRIL 24, 1961

University
Of South Florida
Campus Edition

PRICE FIVE CENTS

SPEECH AND HEARING

Planned Program May Aid Schools

By WING PREDOR
The Speech and Hearing Center here at the University of South Florida is planning to initiate a program for training students in speech pathology and audiology, says Dr. Harris L. Pomerantz, director of the center.

The area of speech pathology covers all the aspects of defects of oral communications. Speech problems treated by the clinician or speech pathologist range from children who have not learned to produce correctly the sounds of speech to adults who have had their speech impaired as the result of a stroke or accident.

He Says It's Needed
Is such a program necessary at USF, or will the programs at the other state universities be sufficient? Prof. Pomerantz says that the program is necessary and the Tampa area is an ideal place for it.

There are about 100,000 children in the public schools in the Tampa Bay area. Approximately 5 to 10 per cent of the school population in any community can be expected to need speech and hearing education. This means there are many, many school children who would benefit by any trained personnel the university can turn out.

Could Be a Major
Are students interested in the program? Prof. Pomerantz says

yes, and predicts that interest will be even greater when plans for the program are more widely known.

In the discussion stage now is a program which will include a few sophomore and freshman courses and enough training in the last two years to result in a B.A. degree.

After graduation positions are available for the speech therapist in public schools, special institutions and clinics, hospitals, with the federal government, with state health departments, and private practice.

Offers Help Now
It is possible in most of the 70 colleges which already have this program to specialize in speech and hearing rehabilitation while still an undergraduate, or wait until the graduate level to begin this specialization.

Right now the Speech and Hearing Center offers correction therapy to students, faculty and staff at the university. A screening test is given to all incoming freshmen to discover any problems students may not be aware they have. Problems with accents of all kinds are given special attention.

This summer, in cooperation with the Speech and Hearing Association, the center plans to make a film strip and tape to provide facts and figures about this field as a career.

Little Man on Campus



He's waiting for this mid-term grade that I just made out — I want you to gift wrap it.

SUMMER HELP

Job Opportunities Open to Qualified

Personnel Services will help interested and qualified students find summer employment. Jack Chambers, director of Personnel Services, and the Personnel staff are working to help the students in every possible way.

Chambers said that they have direct contact with all Tampa firms and are able to arrange for student interviews with the firms. In some cases, this office can employ a person for a particular firm. Kelley Girls Employment Service is also co-operating with USF Personnel Services.

Through this office students can acquire jobs in other states as well as in Florida. Many summer camps, hotels, motels, and resorts are employing a

number of college students for summer work.

A plan has been set up where USF Personnel Services can send people to the firms for testing, test them before sending them, or either give the person a lead on a possible job and let the student check on the possibilities. Also, they can be tested in Florida and sent to another state for employment placement.

Chambers stated, "We will, and continue to go to every possible length to help all qualified students find jobs. Sometimes it is hard to do this but we make every possible effort to help students." Applications can be filed with Miss Joyce Richey or Chambers.

Jewish Women Will Award Scholarships

The Tampa Section, National Council of Jewish Women, each year awards two one-year scholarships to deserving Jewish men or women in the amount of \$400. The applicant must have a minimum average of 2.5 and must plan attendance at an accredited Florida university or college.

University of South Florida students interested must submit a letter of application accompanied by a transcript of grades to Mrs. M. Garrett, 51 Martique, Tampa.

Psychology Profs Attend Convention

The University of South Florida faculty will be represented for the first time at the Florida Psychological Association when it meets for its annual convention April 27 through 29 at the Fort Harrison Hotel, Clearwater.

Dr. Leslie Malpass, chairman of the human behavior program here, will deliver a paper evaluating the mobile laboratories in psychological science. Bruce Flanagan, assistant professor of psychology, will present a paper on effects of alcohol on conditioned responses of human subjects, and Dr. Miles Hardy, assistant professor of psychology, will deliver a paper on factors influencing clinical diagnosis based on figure drawings.

3 Other Members to Attend
Other USF faculty members attending the convention are Dr. Paul Givens, associate professor of psychology, Dr. Clifford Stewart, assistant director of evaluation services and institutional research, and Dr. Carolyn Pinkard, clinical counselor in student affairs.

The meeting will be attended by several hundred psychologists from Florida's colleges, universities, mental health facilities, and research interests. They will report their recent research in a great variety of subjects extending from conformity to brain waves.

Varied Topics on Agenda
There will be symposia on topics such as the best methods of educating psychologists and the role of the state's psychologists in promoting mental health in Florida.

The program will include a banquet on April 27 at the hotel with the major address by Dr. Melvin P. Reid, chief psychologist of the Florida State Board of Health and president of the Florida Psychological Association, speaking on the influence of social class on treatment of mental patients.

\$100 Donated By Students For Students

The Student Committee of the USF Foundation conducted a membership drive this past week. This drive was aimed primarily at the students, although it also attracted many members of the faculty and the staff. The money from this drive passed the \$100 mark the first two days. This money will go for student use in the great of scholarships, student loans, and books for student use that the library does not see fit to buy with university funds.

The chairmen of this drive were Bernard Zaidman and Jim Woodroffe. Members of the Student Committee who participated in the drive were Louise Stewart, Carolee Froelich, Julian Piper, Leonard Jones, and Virginia Montes. The advisor of the Student Foundation Committee is Donald W. Gould, director of development.

USF Campus Decisions May Now Be Appealed

Grievance Units Hear Complaints

By BILL BLALOCK JR.

Three committees have been set up in the main areas of University activity to give students an opportunity to appeal decisions made in connection with the offices of student affairs, instructional affairs and business affairs, said Dr. Howard Johnson, dean of student affairs.

The three committees are the Traffic Committee, the Academic Standards Committee, and the newly organized Student Affairs Committee. The purpose of these committees is to give students, who feel they have received unfair decisions concerning traffic fines, academic standing, and student affairs, some chance of having the decision reversed. Johnson said that usually decisions by himself or other administrative personnel were final, but that if the student felt such rulings to be unjust, he could petition the committee in the area involved.

Traffic Committee
The Traffic Committee, headed by Dr. Charles N. Millican, dean of the College of Business Administration, has been in operation throughout the year, and Academic Standards Committee, headed by Dr. Frank Spain, registrar, went into operation at the end of last semester. Johnson said both committees had reversed previous decisions and, in the case of the Academic Standards Committee, had reinstated students.

The Student Affairs Committee recently formulated its program and established the process to be used by students desiring the committee's services.

Process Outlined
The process as stated in the committee's minutes is as follows:

1. A written request for an appeal hearing must be submitted to the chairman of the Student Affairs Committee, containing at least the following elements: A statement of the problem, previous decisions being appealed, an outline of previous efforts toward resolution, and an adequate documentation or validation of facts involved.

2. When necessary, an ad hoc subcommittee may be appointed to accomplish necessary fact finding by interview and other techniques. Personal appearance by the appellant will usually not be necessary.

3. Discussion will be conducted under committee procedures and decisions will be drawn by parliamentary procedures with motions and ballots a matter of record.

4. A written record of the committee's decision will be furnished each appellant. In addition, a committee member may be designated to discuss the decision with the appellant.

Written Record Kept
A written case record of each appeal will be maintained as a confidential adjunct record of the proceedings of the Student Affairs Committee.

Dean Johnson has been

CAMPUS ROUNDUP

Magazine Article Snows Iowa Senior

By CAROL MARTIN

As a result of the feature story on USF in the April issue of Mademoiselle, student model Marlene Hennis has received a letter from a Monticello, Iowa, high school senior who plans to attend USF next fall.

Miss San Dee Pasker writes: "I visited your university about 2 months ago and there is so much more about your school I'd like to know. I mean, things like its social life, how easy is it to make friends, and there are sororities and fraternities. All sorts of things on that line?"

"Another problem of mine is clothes! In Iowa the weather is really so much different than in Florida so I'm really stumped. You do wear wool skirts and sweaters, don't you? I'd really appreciate a reply. Thanks a lot for your trouble."

S/San Dee

OUR REPLY

Dear San Dee:
Briefly our Greek life is hidden under what our dean calls "social clubs." We have some real sharp ones and if you don't find one you like then you just form your own.

As for clothes — we wear them, including wool skirts and sweaters. The ratio of men to women is about 3 to 2 so your chances are good. Some of them do not drive the late model cars they should but I think we can get that upgraded if we band together as real women and just demand '61 models.

Our head resident, the woman who runs the dorm, Mrs. Phyllis Marshall, who hails from West Virginia, is not bad to deal with. She sorts makes the rules as we go along and I might say that she married off 3 of 45 women in her dorm last semester. Let us know when your plane lands—we'll be there to brush off the snow and welcome you.

(For other students who may want to write Miss Pasker, her address is 102 N. Main Street, Monticello, Iowa.)

Florida State University — Student government at FSU will play host to some 400 delegates to the eighth annual conference of the Southern Universities Student Government Association April 27-29.

Florida members of SUSGA are FSU, University of Florida, Florida Southern College, University of Tampa, and Jacksonville University. Three prospective members are the University of South Florida, Stetson University, and the University of Miami.

Florida Presbyterian College — Twenty-six high school students from Southeastern states have won scholarships and awards at FPC in its annual competition, announced Dr. Louis C. Guenther, registrar and director of admissions.

Saint Leo — Joseph J. Egan, professor of economics and politics, successfully defended his doctoral thesis on "Qualitative Economic Changes in Secular Inflation" April 3 at Georgetown University, Washington, D.C.

Florida State University — A new service organization, Circle K, Eta, has been formed. It will be a voluntary group which chooses its own members.

University of Tampa — Dr. Ralph E. Lapp, scientist, writer and consultant, lectured Thursday at 11 p.m. and 8 p.m. at the Municipal Auditorium. Sponsored by the university, Dr. Lapp spoke on "The Challenge of the Nuclear-Space Age" and on "The Challenge of Space." USF students were invited.

University of Florida — The UF will be host and co-sponsor of the Southeastern States Assembly on "Goals for Americans" in Fort Lauderdale, April 27-30.

Manatee Junior College — MJC Civinets delegates will attend the state convention to be held in Fort Lauderdale May 4-6.

Stetson University — Dr. James W. Parrish, vice president of Stetson, will present four inspirational addresses at the annual Baptist Pastors' Retreat at Lake Denton, April 24-26.

University of Miami — UM has accepted an invitation to send a choral group on a six-week summer tour of U.S. military installations in the European Command, according to UM President Jay F. W. Pearson.

Florida State University — The FSU chapter of Alpha Kappa Psi, national professor business fraternity has initiated into honorary membership Secretary of State Tom Adams.

Florida Presbyterian College — The concert choir of EPC took its first extensive state tour over the spring holidays. Ranging over the southern half of Florida, the singers presented 10 concerts in eight cities.

Manatee Junior College — Freshman Judy Coleman, of Englewood, was featured in a cover story in the March issue of "Newsmonth" magazine.

University of Florida — Sen. George A. Smathers will speak at graduation ceremonies June 5 when an estimated 1,200 students will receive their degrees and seek employment.

University of Tampa — The Tampa Art Institute and the University presented an illustrated talk, "What Is Primitive Art?" by Allen D. Chapman, of the Museum of Primitive Art, New York City, last week in the Dome Theater of the school.

THREE STORIES OF BOOKS

Students Reported Not Using Library

Many students are not yet taking advantage of the new library and its facilities even though three of the five stories have been in full operation since Friday, April 14, according to Miss Ann Weaver, reference librarian. Miss Weaver finds that a great majority of the students have never been in a large library and many are not acquainted with the Dewey Decimal or the Library of Congress Classification Systems.

First Floor Reading Room
The first floor of the library houses a reserve reading room with closed reserve books. This is proving to be a favorite with the students as a study room. An art gallery and a special collections room are also found on the first floor.

On the second floor, there is a large periodical room with all current periodicals shelved by title, periodical indexes and newspapers. Across the hall is the reference room in which the reference collection and national bibliographies are located. The card catalog is also in the reference room. Students desiring a book should consult the catalog for the call number

and in turn give the librarian a slip containing the number.

The stacks of general information books are located on the third floor along with typing and conference rooms. Although the sound proof typing rooms are available for student use, until funds are available to purchase typewriters, students may bring their own.

The fourth floor will, in the future, house the rest of the general book collection. At present it is not being used.

The fifth floor has the office of Evaluation Services and Institutional Research. The faculty and staff lounge is on the south side of the fifth floor.

Stereo Listening
The basement contains music listening rooms where students may hear their choice of music. The receiving department and operations for technical processing are also found here. The students have been co-operating quite well in getting books back on time. There is a fine of 25 cents an hour for late closed reserve books.

The combined library staff now numbers 22 persons plus student assistants.

TEACHING AUDITORIUM

Cleveland Theatre Group, Art Exhibit Open TA-T

Arts Council Brings Culture To University

One of the most unappreciated organizations here on campus is the Student Arts Council, a division of the USF Events Committee. The responsibility for the number of outstanding events at USF falls on this council. It is made up of student representatives from each of the fine arts groups and from each of the registration groups.

The officers of this active organization are: Bobbie Hansen, president; Carol Leininger, vice-president; Judy Shelton, secretary-treasurer; Susan Howell, house manager; Jim Leininger, stage manager; Marcela Torres, hospitality director; Bernard Zaidman, publicity director; Prof. A. A. Beecher, director of the Division of Fine Arts, sponsors of this group.

The cultural tone, as well as the academic tone, make a university distinguished. It is often the cultural tone which separates a "good" university from a "distinguished" university. It is hoped that through the Fine Arts Events the cultural tone of the University will be enhanced.

Journalism Students Attend Convention

A delegation of USF journalism students attended the Florida Junior Colleges Press Association (FJCPA) convention held in St. Petersburg, April 13-15. Those making the trip were Jim Dixon, Carol Martin and Virginia Montes from the newspaper staff and Merilee O'Berry and Bill Hampton from the yearbook staff.

George H. Miller, assistant professor and advisor of the Office of Campus Publications attended, also.

The University of South Florida's new teaching auditorium-theater was officially opened last Friday night with the Cleveland Playhouse Touring Theater's presentation of Ben Johnson's classic satire "Volpone."

The theater group gave two performances of "Volpone" Friday and two performances of Christopher Marlowe's "Doctor Faustus" on Saturday. The Friday evening presentation was considered the official opening of the Teaching Auditorium - Theater and Dr. John S. Allen, USF president, spoke briefly before the curtain went up.

Reception Held
After the Friday evening performance there was a reception in the foyer where the "first-nighters" met and talked with the cast. The reception was sponsored by the Student Arts Council and punch was served. An invitational banquet was held at 6:30 p.m. Friday night to honor visiting dignitaries here for the opening night. Dr. George C. Izenour, design engineer from Yale University and consulting designer for the Teaching Auditorium - Theater, was the principal speaker.

Art Exhibit
The University sponsored art exhibit in the foyer of the Teaching Auditorium - Theater, which was set up to coincide with the official opening, will remain open to the public for three weeks. The 28 works being shown are by seven members of the Gulf Coast Art Center.

The \$572,706 building, which has a seating capacity of 600, is one of the most modern theaters in the country. It is equipped with continental seating with only two side aisles, eliminating the usual center aisle. This allows better sightlines to the stage, since no center theater space is lost.

Television Facilities
The front stage opening is 44½ feet wide, and 18 feet high. There are two apron stages—both elevators—which can be used as either orchestra pits or stages. There are also

two side stages with balcony stages over both of them. The side stages also have facilities for televising anything on the main stage.

The basement contains a sound-proof band-rehearsal studio, storage space, and four dressing rooms complete with rest rooms, showers, and make-up areas.

The second floor of the building houses the office area. The entire theater is connected by an inter-communications system.

Strong Program Planned
The University is planning a strong program in the theater arts area centered around the new Teaching Auditorium-Theater. The program is directed by the Fine Arts Division headed by Prof. Alvah A. Beecher, director, and John W. Caldwell, associate professor of theater arts.

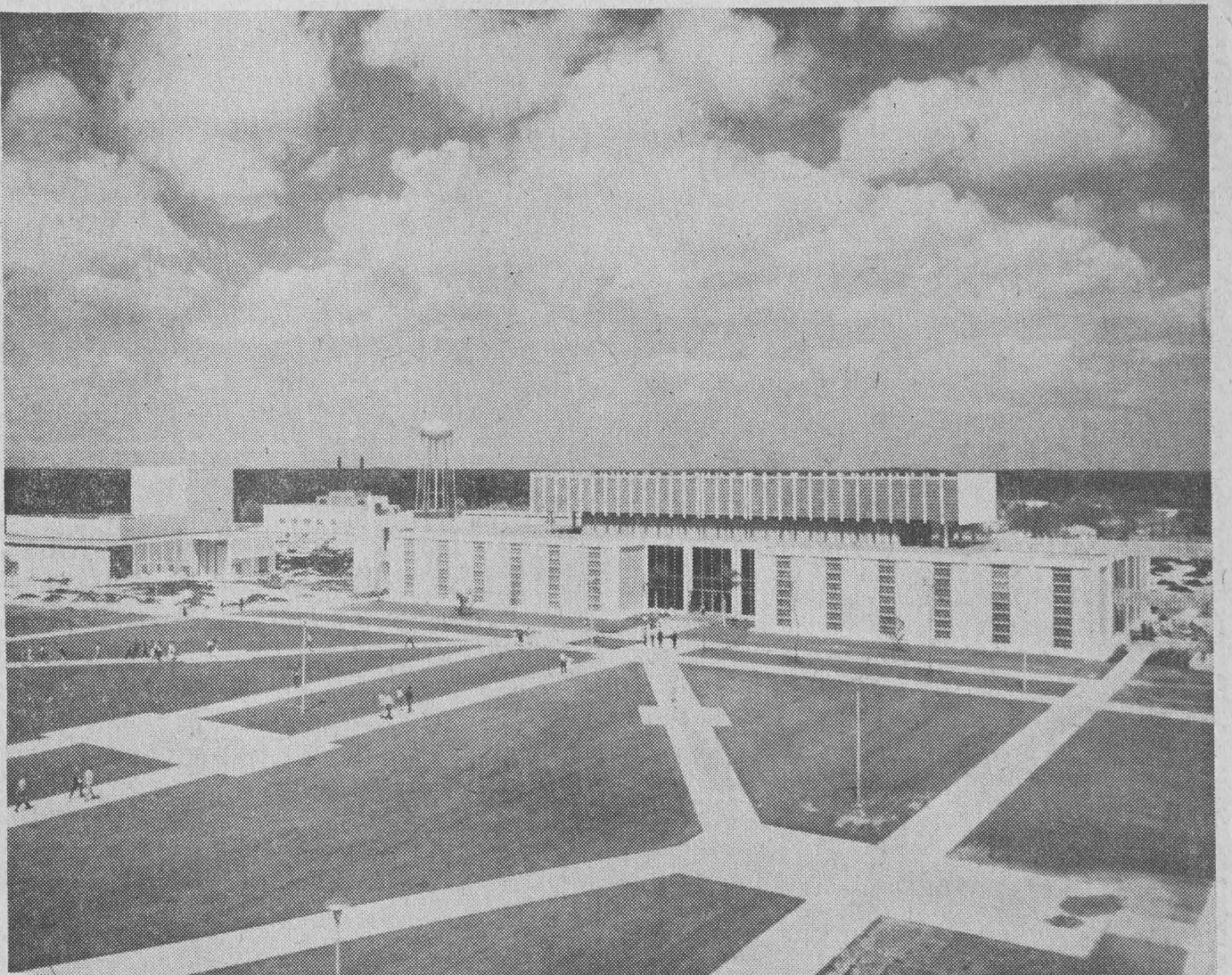
JFK Book Featured

A human relations institute and workshop will be held here May 1-4.

Particular attention will be given to problems of Tampa inter-group relations and to the methods that have been utilized to help community leaders to continue working for a better and healthier society.

The theme of the workshop will be "The Issues We Face." There will be sub-themes for each day of the four-day conference dealing with prejudice, problems of an urban community, and race relations in Tampa.

A discussion of John F. Kennedy's book, "A Nation of Immigrants," will be featured.



CENTER OF USF CAMPUS FROM LIBRARY FIFTH FLOOR

This isn't a chopper pilot's view of the University of South Florida campus—but a photo taken from the fifth floor of the library where the USF staff lounge is located. It's the highest point on the USF campus. Although the fifth floor has been off limits to stu-

dents, still many take the back elevator which runs to this floor (the main elevators do not unless a pass key is used) just to get one good look. In the distance is the teaching auditorium-theater to the left, the university center to the right.

The Tampa Times

University of South Florida Campus Edition
(Page 1 and Page 2 Staff)

Editor Jim Dixon
Managing Editor Bill Blalock
Sports Editor John Gullett
Faculty Adviser George H. Miller
Other staff members: Wing Proctor, Louise Stewart, Steve Maxwell, Virginia Montes, Carol Martin, Martha Jean Ekker and Betty J. Woodard.
Address all communications to Office of Campus Publications, Room 224, University Center. Phone WE 8-4131, Ext. 118.

Sports Column Is Discontinued For 'Reasons'

Sports Editor John Gullett announced cancellation today of the weekly column, **USF SPORTS**, which has appeared regularly in the **USF CAMPUS EDITION**.

The editorial-type sports column was discontinued, he said, "because of conflicting pressures by influential news sources, and as a result of lack of cooperation from various parties."

"The column was originally intended to be analytical in nature, but it has been restricted in recent issues to general news and feature information."

Softball League Standings

All-Stars 3-0 Areta 1-2
Faculty 2-1 Revolver 1-2
Enota 2-1 Epelta 0-3
Tuesday, April 25 (4:15 p.m.)
Areta vs. Revolver
All-Stars-Epelta

Daily Schedule

MONDAY, APRIL 24, 1961
1 p.m. UC Rec. Committee UC 108
Stud. Bridge Lessons UC 162
Young Democrats UC 202
Horse Fanciers Club UC 203
Science Staff Seminar UC 204
Electronics Club UC 202
5 p.m. UC Planning Committee UC 167
Resident Students Bible Study UC 205
Resident Women's Council UC 104
7:30 p.m. U. Women's Bridge UC 168
8 p.m. U. Women's Bridge UC 168
TUESDAY, APRIL 25, 1961
10 a.m. US Home Committee UC 201
Business Leaders UC 202
Baptist Students UC 203
For. Lang. Club UC 204
Methodist Students UC 205
English Faculty UC 215
Gun Club UC 216
Int. Slurr. Com. UC 226
St. Art. Council Ad 1032
5 p.m. Cico UC South Caf
6:15 p.m. UC Rec. Committee UC 108
7:15 p.m. Dental Society UC 108-104
7 p.m. Anthropology TV UC Lounge
7:30 p.m. Fides UC 206
WEDNESDAY, APRIL 26, 1961
2 p.m. Stereo Listening Hour UC 157
Enotas UC 201
Fides UC 215
Epelta UC 216
Student Bridge UC 104
4 p.m. Student Chess UC 167
THURSDAY, APRIL 27, 1961
11 a.m. UC Funct. Com. UC 179
Debate Club UC 200
UC Dance Com. UC 201
Epelta UC 216
Group 17 Human Behavior UC 111
12:30 p.m. Deans Meeting UC 167
4 p.m. Student Chess UC 167
6:30 p.m. Methodist Dinner UC 103
7:30 p.m. Newman Club UC 202
7:30 p.m. Glamorouses UC 206
FRIDAY, APRIL 28, 1961
4 p.m. Jam Session UC RR
Projectionists UC 203

INTRAMURALS

Bowling League Tourney Is Slated for Tuesday

By JOHN GULLETT

The second All-University Co-Recreational Bowling League handicap tourney starts rolling tomorrow, April 25, at Florida Lanes.

Miss Mercedes Fernandez, league advisor and physical education instructor, said, "The tourney will not interrupt the weekly bowling league, which meets every Tuesday at 4:30 p.m. The monthly handicap tourney actually is just an addition to the regular league."

On the last Tuesday of each month 30 bowlers compete for top individual honors in the men's and women's divisions. Trophies are awarded to the winner of each division. Each of these winners will compete in a championship tourney during May.

This will be the second in a three-part series to be held this semester. The first of these was held Tuesday, April 11.

Lavin and Ledford

In the April 11 tourney, students Larry Lavin and Laura Ledford won the men and women's individual trophies. Lavin's 648 for a three-game series was tops in the men's division, while Miss Ledford totaled up 540.

The league is looking for new members, and interested parties wishing to enter on an individual or team basis may contact Miss Fernandez.

Both winners will compete in the May tourney to determine the over-all winners of the league.

Faculty Wins 2-1 Record

The Faculty, fighting desperately to keep pace with the league-leading All-Stars, scored 14 runs in the first two innings of the April 18 game with Epelta, then added nine more for a 23-13 Intramural Softball League win. The victory gave the Faculty, second in league competition, a 2-1 record.

William Garrett, English professor, led the plate attack, pounding out a triple, double, and two singles for the afternoon.

Kahn Hurls Again

Dr. Sy Kahn, professor of English, went the distance for the Faculty, chalking up his second victory in as many games this season. John Mackenzie, English instructor, contributed to the cause with a double and two singles for the afternoon.

The loss left Epelta with an 0-3 season record.

The All-Stars protected their lead and perfect record by downing Areta, 14-10, behind the pitching of Charlie Yawn. Yawn held Areta hitters to three hits, while his teammates were taking advantage of eight walks to enter the scoring column.

Meisen Belts Homer

Big Dan Meisen belted a home run in the second inning, his first of the season. The Aretes suffered their second loss against one win.

The Enotas squeezed out a 3-2 win over the Revolvers, in the only real pitching duel of the day.

Archery Practice

Archery practice is scheduled today, April 24, for contestants in a tourney to be held Thursday, April 27, at 4:15 p.m., on the archery range west of the new tennis courts. Late entries may still sign up in the P. E. office, or Ad 1073.

Student golf privileges at Temple Terrace Golf and Country Club have been revoked, Dr. Gilman Hertz, director of physical education at USF, announced recently. The revocation will affect the students taking golf as a P. E. course, as well as the intramural golf club.

Hertz said he was told "they do not have the facilities, they feel, to handle the increasing number of players using the course." Students were formerly allowed to use the course upon payment of 75 cents.

The regular cost per round

New Members Being Sought In Horse Club

One Campus organization currently engaged in an all-out recruiting campaign is the Horse Fanciers Club. Dr. Gilman Hertz, director of physical education at USF, announced recently. The revocation will affect the students taking golf as a P. E. course, as well as the intramural golf club.

Hertz said he was told "they do not have the facilities, they feel, to handle the increasing number of players using the course." Students were formerly allowed to use the course upon payment of 75 cents.

The organization is looking for a sharp increase in its membership, and will welcome interested parties at their weekly meetings, Monday, at 1 p.m., in Rm. 205 of the University Center. All that is required to join the club is a genuine interest in horses, for riding or show. Beginners will be given instruction on handling procedures.

Student organizers, beside Miss Childers, include: Ray Nager, Judy Shelton, Ellen West, Sallie Fletcher and Jack Boyd.

CAMPUS NOTICE

ROOM FOR RENT. Private room with private bath and entrance for male student. New home, 11811 51st Street. Phone Mrs. Mendoza, WE 8-2893.



INDIVIDUAL HANDICAP CHAMPS REJOICE!

USF Students Larry Lavin and Laura Ledford are all smiles as they hold the trophy signifying their victories in the recent Co-Recreational Handicap Tourney held at Florida Lanes. Miss Ledford and Lavin rolled three-game series scores of 540 and 548, respectively.

—USF Photo

of golf at Temple Terrace is been set for Monday, May 15, at from \$3.50 to \$5. The 75 cents greens fee is still in effect at Forest Hills Golf Course, and Hertz urged the students to "patronize their establishment, and show appreciation for the special prices."

Following closely on the heels of the revocation was the announcement of a semester rate of \$37.50 at Temple Terrace. This would include all privileges.

SPORTS SHORTS: The second All-Campus Relays has

Courts Opening

USF took another big step in the direction toward complete campus facilities with today's official opening of the six new Tenflex green composition tennis courts for faculty, staff, and student use.

The courts, located north of the P. E. building, were built at a cost of \$15,000. Three more courts are being constructed in the same area.

Dr. Gil Hertz, upon announcement of the opening, gave a few rules of court etiquette. "Wearing the proper dress while playing tennis is very important. If the player is concerned about this, the rule to remember is, 'To be right, wear white.'"

Hertz said the courts will not be open to the general public, due mainly to the lack of facilities in the Tampa Bay area. Those using the courts are required to wear rubber-soled shoes.

Playing equipment may be checked out any time of the day at the P. E. building, and may be kept out overnight, if it is returned before 9 a.m.

The courts will be closed to the Campus public during class hours, which include: 9 a.m. daily, 11 a.m. Monday and Wednesday, 12 noon daily, and 1 p.m. Tuesday and Thursday.

Players are asked to restrict playing time to 2 sets or one hour, when others are waiting.

Bowling

Co-Recreational Bowling League			
	Won	Lost	Per-Avg.
Headliners	15	9	567
Crockagators	15	9	523
Four Pins	15	9	624
Martie	9	7	562
Touchables	11	9	550
Unpredictables	13	11	541
Dependables	3	13	197
Shells Plus Three	3	21	1124
Individual High	Top Five Men		
Score	Allen Neilson	173	
Score	Ronnie Veller	169	
Score	Wyvon Hudson	152	
Score	Top Five Women		
Score	Individual High	Tish Gable	121
Game	Laura Lerford	163	
Wyvon Hudson	243	Carol Carpenter	99
Ronnie Veller	235	Becky Thomas	99
Larry Lavin	215	Janie Ertz	98

ADVERTISEMENT

For Sale - Trailer Park

In Clearwater, on South Fort Harrison Avenue. Modern trailer park, 40 trailers occupied now, complete sewer disposal plant, 62 spaces available now, license for 125 spaces.

Call: OUTDOOR THEATRE, phone 446-3183, Clearwater

FOUR YEARS OFFERED

Students Enjoy Russian Classes

Here at the University of South Florida there is a subject area which many students consider uninteresting and unimportant. This is the area of foreign languages. If this is the way you feel, this story is written for you, for it may awaken in you a need for more comprehensive study of foreign languages. It is written especially about the Russian classes, but it may very well concern any of the other four modern languages taught at this university.

The Russian program here at USF is one of the best in the state. It offers a full four-year program for which a person taking the full course may receive a major in Russian. FSU does not offer Russian; Florida does, but its program is not comparable to USF. Stetson and Miami are the only other two universities in Florida which offer a full 4-year course.

What does the Russian program here at USF consist of you might ask? It consists of learning to speak, write, and read Russian, with special emphasis being placed on the spoken language. There are four hours of class per week; two lab periods and two class periods. During

the lab period the students listen to a tape and repeat exactly what they hear, paying special attention to the pronunciation of the words. Not much time is spent studying the literature, customs, and history of Russia since this will be covered more thoroughly in the second and third years.

An interesting fact connected with the classes is that it has a "Russian typewriter," painted, of all colors, red. There are 50 students studying Russian here at USF; the majority being men. The instructor is Mrs. Miliza Arcibuevas.

What do the students taking Russian think of the language and the course? The majority of them agree that they enjoy learning the language. They feel that it is both educational and interesting. They admit that it is a little harder than most languages, but they feel that it is worth the "little extra effort" that they put into it. They also feel that it will be an asset to them later on in life.

This is a few of the comments by Russian students on this subject:

Martin Favata, president of the Foreign Language Club and a language major, "I think it's a good course. Russian is a little more difficult than most languages, but it is a good course." Karen Anderson — "I don't think Russian is too hard. It is a good course and will be better next year. We have a marvelous teacher."

ADVERTISEMENT

FOUND-SUCCESSFUL AID FOR HER PSORIASIS

Kansas City, Mo., Dec. 15, 1960. "Writing to let you know how wonderful your GIP Tablets and Ointment are. Had psoriasis over 40 years. Tried numerous ointments and remedies but not one did what your products have done. I am completely rid of my psoriasis." This is part of a report telling of a user's success with a dual treatment for psoriasis, now made available to all sufferers. Full information and details of a 14 day trial plan from Canam Co., Dept. 229R Rockport, Mass.

MARINE BANK & TRUST COMPANY STATEMENT OF CONDITION

(CONDENSED)

As of April 12, 1961

COMPTROLLERS CALL

RESOURCES

Cash on Hand and Due From Banks	\$18,783,283.81
U. S. Government Obligations	8,177,032.71
Obligations of Other Federal Agencies	699,750.00
State, County, and Municipal Obligations	3,750,225.14
Federal Reserve Bank Stock	90,000.00
Loans and Discounts	\$20,060,885.25
Less: Reserve for Loans	586,452.96
Furniture and Equipment	198,315.12
Other Assets	781,402.60
Customers' Liability for Letters of Credit	25,254.74
TOTAL RESOURCES	\$51,979,696.41

LIABILITIES

Capital Stock	\$ 1,500,000.00
Surplus	1,500,000.00
Undivided Profits	129,110.59
Reserve for Taxes, Interest, and Depreciation	118,932.18
Deposits	48,706,398.90
Liability for Customers' Letters of Credit	25,254.74
TOTAL LIABILITIES	\$51,979,696.41



Florida's Oldest Trust Company

Marine Bank and Trust Company

MEMBER FEDERAL DEPOSIT INSURANCE CORPORATION • MEMBER FEDERAL RESERVE SYSTEM
FRANKLIN AND MADISON

OFFICERS

GEORGE B. HOWELL
Chairman of the Board
A. CLEWIS HOWELL
President
L. D. SMITH
Vice President
J. W. GRAY, SR.
Vice President
J. L. HEARIN
Vice President
J. W. GRAY, JR.
Vice President & Secretary
GEORGE K. STRAUS
Vice President
SIMON F. WOOTEN, JR.
Vice President
F. M. MOORE
Vice President & Cashier

DON F. GADBURY
Asst. Vice President
MANUEL LOPEZ
Asst. Vice President
MRS. E. C. LAPPIN
Asst. Cashier
MARK W. CLARK
Asst. Cashier
WILLIAM JOSEPH
Asst. Cashier
M. G. ALVAREZ, JR.
Asst. Cashier
B. H. CASSIDY
Asst. Cashier
D. A. REGAR
Credit Manager
PAUL L. SUTER
Comptroller

TRUST DEPARTMENT

HENRY A. CARRINGTON
Vice President & Trust Officer

THEODORE F. McLANE
Asst. Trust Officer

INTERNATIONAL DEPARTMENT

R. M. CAMPDEBROS
Asst. Vice President & Manager

AUDITING DEPARTMENT

CARL W. MULLIS
Auditor

DIRECTORS

CARL D. BROEIN
Chairman of the Board
General Telephone Co. of Fla.
TROY A. BROWN
President, Raybro Electric Supplies, Inc.
HENRY A. CARRINGTON
Vice President & Trust Officer
A. C. CLEWIS, JR.
President, Myrtle Hill Memorial Park, Inc.
JAMES J. CORRAL
Vice President, Corral-Wodnicka & Co.
H. L. CROWDER
President, Woodward-Crowder Company
RALPH C. DELL
Partner, Allen, Dell, Frank & Trinkle
L. J. ELSBERRY
Elmhurst Farm
CARL FISH
Citrus Broker
M. M. FROST
Vice President, Florida Division, General Portland Cement Co., Consultant, Eastern Air Lines, Inc.

J. W. GRAY, SR.
Vice President
J. L. HEARIN
Vice President, Realtor
GEORGE B. HOWELL
Chairman of the Board
A. CLEWIS HOWELL
President
PHILIP J. LEE
Vice President, Atlantic Coast Line Railroad Co.
R. W. SHACKLEFORD
Attorney
L. D. SMITH
Vice President
W. L. WABING, JR.
Chairman of the Board, Lyons Fertilizer Co.
J. H. WILLIAMS, JR.
Secretary & Gen. Mgr., J. H. Williams Oil Co., Inc.