

3-13-1961

## The Tampa Times: University of South Florida Campus Edition, March 13, 1961

Virginia Montes

Follow this and additional works at: [https://digitalcommons.usf.edu/times\\_campus](https://digitalcommons.usf.edu/times_campus)

---

### Recommended Citation

Montes, Virginia, "The Tampa Times: University of South Florida Campus Edition, March 13, 1961" (1961).  
*Tampa Times Campus Edition*. 186.  
[https://digitalcommons.usf.edu/times\\_campus/186](https://digitalcommons.usf.edu/times_campus/186)

This Text is brought to you for free and open access by the USF Student Publications at Digital Commons @ University of South Florida. It has been accepted for inclusion in Tampa Times Campus Edition by an authorized administrator of Digital Commons @ University of South Florida. For more information, please contact [digitalcommons@usf.edu](mailto:digitalcommons@usf.edu).



## Toonder Tonight

Partly cloudy and warm through Tuesday with showers likely tonight or Tuesday. Winds 15-25 m.p.h. High today 84. Low tonight 66.



# THE TAMPA TIMES

University  
Of South Florida  
Campus Edition

SIXTY-NINTH YEAR—No. 30

TAMPA, FLORIDA, MONDAY, MARCH 13, 1961

PRICE FIVE CENTS

## CAMPUS ROUNDUP

### 55 Make USF Honor Roll

By CAROL MARTIN  
University of South Florida—Dr. John S. Allen, president of the University of South Florida, is recognizing 55 full-time students who made a 3.5 grade average or better for the university's first honors.

The students will be honored at a coffee hour at 10 a.m. tomorrow in the University Center by Pres. Allen.

The 55, in alphabetical order and by their home communities, include:

Clearwater: Paul A. Meissner, Jr.

Dover: James L. Harrison.

Lakeland: Reginald D. Hardwick and Carolyn M. Wade.

Land O'Lakes: Mrs. Rose S. English.

Lutz: Ernest A. Brady.

New Port Richey: Lola Jean Wyckoff.

Plant City: Sharon R. Maxwell, Bernadette O. Trotter and Mrs. Clara V. Wansley.

Tampa: Joseph E. Ahnell, William P. Alford, William R. Blalock Jr., Robert R. Borrell, Mrs. Barbara H. Campbell, Mrs. Margaret C. Corrales, Richard A. Davis, Mrs. Lottie W. Eggleston.

Melody Lee Hardesty, Herbert W. Hibbits, Merle A. Holland, Eugene H. Hyde, Frederick G. Jenkins, Virginia I. Johns, Gladys L. Kiger, James P. Klapp, William E. Klay, Carole Ann Leininger, Charles S. Lucas, Nancy MacGillivray and Roy Nelson.

Also, Thomas A. O'Kelley, Mrs. Evelyn L. O'Neal, Rose

Ann Overstreet, Mara Lynn Pero, Steven M. Perunko, Edna K. Pressman, Mrs. Ann C. Ring, Shira D. Rose, Michael G. Scussell, April K. Shaar, Joanna K. Sigfred, Patricia Ann Smith, Mrs. Doris S. Souders, Ralph S. Tindell, Mrs. Juanita H. Warner, Juanita Waters, Karen S. Webb, Ellen C. West, Michael E. Wheeler, Harold Wickersham, Jeffrey C. Wright, Priscilla C. Zeller.

Zephyrhills: Mrs. Bernice C. Rooks.

Gordon Keller—Representatives of the freshman class are planning a tea for St. Patrick's Day. Guests will include the faculty, the head nurses, and the team leaders associated with the freshman class.

University of Tampa—The university's music department and the University Broadcasting Service presented a salon concert featuring Myron Kartman, violinist, and pianist Mary Mailman in the ballroom yesterday.

University of Florida—Spring semester enrollment figures show 567 more students registered than for this same time last year. Highest enrollment was in the University College, with the College of Education second.

Florida State University—Plans are underway for the annual Family Weekend, scheduled for May 5-7. The event is designed to help parents of FSU students become better acquainted with the university.

Jacksonville University—Dr. Frances B. Kinne has been named the new dean of the College of Music and Fine Arts. She is believed to be the only woman academic dean in a liberal arts college in the South.

University of Miami—The

UM "Band of the Hour" will begin a free concert series starting Thursday. A poll is in process now to select the Homecoming Dance Band.

St. Pete Junior College—The original film classic, "Birth of a Nation," was recently shown here to students and the general public. The silent film was accompanied by a musical soundtrack.

Florida State University—George Watterson is the first FSU student ever to receive the Peninsular Insurance Foundation Honor Scholarship.

Palm Beach Junior College—New robes have been ordered for the PBJC College Singers. They performed a concert last night at St. Andrews Episcopal Church in Lake Worth.

University of Florida—Four scholars from the UF will appear on College Bowl, a TV quiz program, where they will compete for an initial prize of a scholarship.

University of Tampa—A student recital will be held in the ballroom at 4 p.m., Thursday.

Friday the film classic, "Three Men in a Boat" will be shown in the courtyard auditorium at 8:30.

Gordon Keller—Saturday applicants for the September 1961 class came to GK to take their National League of Nursing examinations. The next tests will be held on May 6.

St. Pete Junior College—The Reef of Clearwater provided the background for the recent Valhalla Dance, sponsored by Xi Delta Rho.

Jacksonville University—A program leading to a bachelor of science degree in medical technology has been established at the university. The course will be offered next fall.

# Symphony 1st-Nighter Draws Capacity Crowd

## Concert Marks Debut For Auditorium, Too

The University of South Florida experienced a double first last Tuesday night when the first concert of the University-Community Orchestra was presented as the first event in the new Teaching Auditorium-Theater.

The Symphony Orchestra, under the direction of Prof. Edward Preodor, was organized for the first time in the fall of 1960.

It is composed of 33 musicians with Dr. Armin Watkins as conductor. The orchestra is comprised mainly of students from the university and the surrounding area. But, approximately one-third of those adults participating are members of the community engaged in such diverse vocations as violin making, engineering, and school teaching.

The auditorium, which will seat 599, was filled to capacity. The audience was enthusiastic about every number.

As were most of the buildings on the campus, the new auditorium was designed to serve several functions during the school's construction program.

The hall has a television control booth enabling the university to make use of closed circuit television to increase the number of students who can view a program.

A feeling for music unusual in an amateur group. They played Bizet's "L'Arlesienne Suite"; Bach's Brandenburg Concerto No. 4, with Robin Hoerster and Kay Blake as flute soloists; Gluck's "Iphigenia in Aulis"; and Haydn's London Symphony in D Major.

Filled to Capacity

The auditorium, which will seat 599, was filled to capacity. The audience was enthusiastic about every number.

As were most of the buildings on the campus, the new auditorium was designed to serve several functions during the school's construction program.

The hall has a television control booth enabling the university to make use of closed circuit television to increase the number of students who can view a program.

Drama Professor John Caldwell said that efficient use of aprons and side balconies will enable the university to stage productions at a minimum cost.

Building Is Versatile

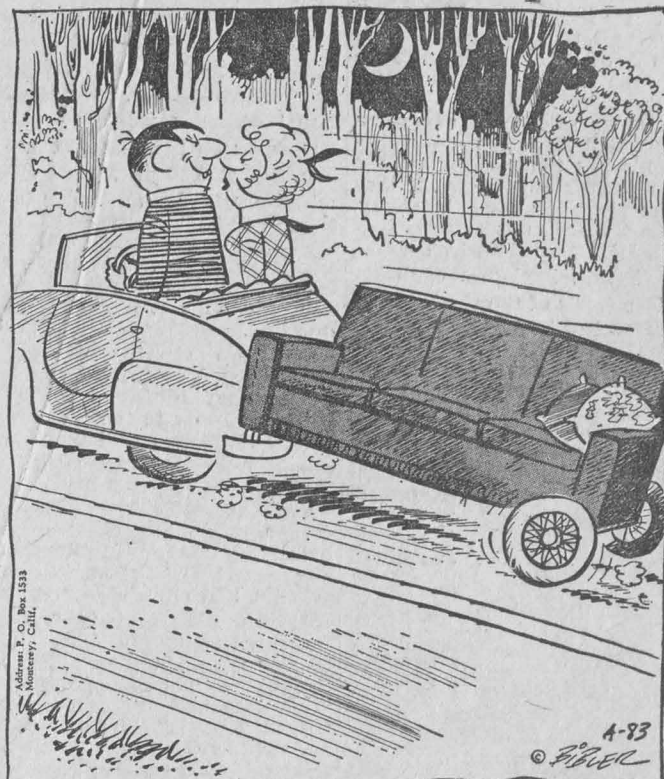
Dr. Alvah Beecher, director of the Fine Arts Division, said the building cost approximately \$461,000.

The versatility of the building was demonstrated last week when three rehearsals took place at the same time.

The orchestra rehearsed on the stage, the university band in the basement, and the drama club rehearsed in the large foyer. The foyer will be used as a picture gallery.

The Teaching Auditorium-Theater will open formally April 21, with a production of "Valpone" by the Cleveland Play House.

## Little Man on Campus



What say we drive out to that new recreational area on the banks of the Hillsborough River and sit in the back seat?

## FOUR ESTABLISHED

### Student Unions Get Under Way

By VIRGINIA MONTES

There have been many diversified questions asked as to what is the position of the student unions on the USF campus. Questions as to whether or not they would be formed and officially accepted, their aims, their projects, and their future plans. It is hoped that this story will answer these and other questions concerning the various student unions.

Four Established

Student unions are simply religious organizations on campus formed by a group of students with a deep interest in their particular religion. Their aims are varied, often dependent upon the religion, the organization, and the students who make up the particular organizations. Here at USF there are now four officially recognized student unions, each with its own definite aim and interest.

The Baptist Student Union (BSU) is believed to be the first religious organization on campus. Its purpose is to promote the spiritual, academic, and cultural life of the Baptist student. Its advisor is Dr. Gerald Robinson, professor of biology and zoology, and its officers are: President Patsy Plott; Vice President Betty Jean Woodard.

The main projects of BSU for the coming semester is the raising of money for summer student missions and the promoting of Bible study groups here on campus. The meetings are held every Tuesday at 10 a.m. in the University Center.

The Jewish organization was organized by Julian Piper and Bernard Zaidman, and its advisor is Dr. Robert Goldstein, assistant professor of history. Its purpose is to promote a

spiritual, intellectual, and social program, and to provide the Jewish student with a "home away from home."

The Jewish union is working towards 100 per cent membership of Jewish students, and towards affiliation with Hillel, national association of Jewish students. Meetings are held every Tuesday at 10 a.m.

Catholic Largest

The largest of the student unions here on campus is the Catholic, which has a membership of about 125. Its officers are: President Pat Jackson; Vice President Greta Dixon; Treasurer Ileen Santiago; Recording Secretary Judy Weaver; Corresponding Secretary Diana De La Osa. Its purpose is the spiritual, educational, and social leadership of Catholic students, and it hopes to become affiliated nationally with the Newman Club. Its advisor is Dr. Frank Freidl, assistant professor in zoology, and coordinator is Father Dummigan. Meetings are held every Thursday night at 8 p.m.

The newest student union on campus is the Methodist group. Its advisor is Cecil Brooks, director of admissions, and its coordinator is the Rev. Dick England of the Hyde Park Methodist Church.

Its purpose is to promote the discussion of religious viewpoints of things discussed in class and to provide a "home away from home" for the Methodist student. It hopes to become affiliated with the Wesley Foundation, and meets once a week at 10 a.m. on Tuesday.

More USF News

On Page 2

## WORTH \$5,000

### Work-Study Talk Cites Advantages

By BILL BLALOCK

Students interested in the work-study cooperative program being planned at the university listened recently to a talk by Donald Hunt, director of the work-study cooperative program at the University of Detroit.

In his talk, Hunt pointed out that the principal advantage of the program is to give the student a better start toward a career selection. This advanced start, according to Hunt, enables the student to select a career for which he is very well suited and to fit himself into a better job.

Hunt pointed out that an Edison Foundation survey showed that over a 10-year period the college graduate who participated in the work-study program had made from \$4,500 to \$5,000 more in net income than the graduate who did not take advantage of the cooperative plan.

Besides the head start in a profession, Hunt also pointed

out that the co-op student participates more in all campus activities during the time that he is employed since the burden of home work has been alleviated. Hunt also pointed out that many of the campus leaders come from this group.

Students under this program have all the advantages of other college students since the GI Bill and Selective Service recognize the program. This means that the co-op student will have the same chance of not being drafted that the other college students have.

Tampa Bay Favorable

Hunt said that the Tampa Bay Area should be favorable to cooperative education since there are more small businesses and in case of an employee cut back in one industry, few co-op students would be affected.

The University of South Florida is the 62nd university to have a work-study cooperative program and Hunt said that he looks to cooperative education to spread much more during this decade.

Planning Committee

Many questions concerning the co-op program at the university have not been settled as yet. A committee of deans and administrative heads will decide what the co-op students' fee for his off campus semesters will be. It will most likely be in the area of \$35 to \$40, said George H. Miller, director of the program here. The fee will entitle them to all campus privileges.

Other questions to be answered include what the necessary grade average for admittance to the program will be, and the number of hours that the co-op student could take during his working semester.

It will be possible for students to transfer to other schools and still remain with the co-op program and hope fully with the same or a similar firm.

### Informal Panel Planned

The All-University book, "The Ugly American," will be the subject of a panel discussion during the free period at 11 a.m., March 23. In order to stimulate interest, and to choose the student members for the panel, an open discussion has been planned for Wednesday during the free period at 2 p.m. This informal discussion will be in U-201. Anyone who would like to express his opinion is invited to attend.

The panel will include, in addition to two students, two retired foreign service officers. One is Russell Brooks, president of the Foreign Affairs Club in St. Petersburg. There also will be two USF professors on the panel.

Additional informal discussions are scheduled for each of the four Mondays following the panel, excluding the Monday after Easter, when there will be no school. These discussions will take the form of no-host luncheons in U-168, at 1 p.m.

All of these meeting times and places have been set up by Dr. Warner and his committee so that those interested will know where to find each other. It is hoped that they will lead to many unscheduled discussions and debates.—W. P.

Governor Pays First Visit to USF Campus

Gov. Farris Bryant paid his first visit to the University of South Florida campus last Thursday when President John S. Allen conducted him on a brief tour of the buildings and grounds. The governor, due on campus at 9 a.m., arrived some eight minutes early and immediately started his tour of the campus giving it quite a thorough looking over.

### USF Gets 1st, 2nd In Table Tennis

Larry Conner of the University of South Florida placed first in singles and a USF team placed second in the doubles in the National Association of College Unions Table Tennis Tournament regional meet at Raleigh, N.C., Saturday. Members of the team making the trip were Conner, Murray Matthews, Pat Mason, Larry Lavin and David Ivey.

### Campus Notices

The Building Leaders Organization for the faculty of the school of Business Administration meets, March 14, 10 a.m. All interested students are invited.

In Group 17 meets every Thurs., 11 a.m. in U-201.

All veterans who are interested in forming an association will meet at 1 p.m. today in U-201. All ex-servicemen and women who are full-time students are urged to attend this organizational meeting.

Each Monday at 5 p.m. the Baptist Students sponsor a Bible study class in U-205. All interested students are invited to attend.

Tues., March 14, 10 a.m. Recreation Committee will meet in U-200.

BSU will meet in U-203 Tues., March 14, 10 a.m.

Wed., March 15, 2 p.m. Art Club meets in U-205.

Foreign Language Club will meet in U-201 Tues., March 14, 10 a.m.

In U-205, Tues., March 14, Methodist Student Union meets, 10 a.m. Music Lovers . . . The "Stereos Listening Hour" is every Wed., 2 p.m. in U-157.

USF Rifle Club meets, U-216, Tues., 10 a.m.

Joe Luis Art Lecture Demonstration will be held Thurs., 11 a.m. 8-100.

"Antigone," a Greek play, will be presented Thurs., March 16, 8:30 p.m. Teaching Auditorium. This play will have another showing Fri., March 17, 8:30 p.m. and Sat., March 18, 8:30 p.m.

STUDENT WATERS WANTED—If interested see Mr. McArthur in Adm. Bldg. 2016. Needed to work banquets—pay \$55 an hour.

### Dr. Harkness Speaks

Dr. Donald R. Harkness, associate professor of English, spoke at the Tampa Unitarian Church recently. His subject was "Organization Man or Mouse."

## ONE TITLE?

### Faculty Members Discuss 'Rank'

A recent memo to all faculty members at the University of South Florida has been the subject of many discussions and debates, official and unofficial during recent weeks. In short, it says, "The University of South Florida proposes to have only two regular instructional descriptive titles for its faculty. These are professor and lecturer."

The memo said also that there may be such titles as teaching or research associate and visiting professor. The title "lecturer" would be for those persons who may have retired from previous academic positions held elsewhere or who may enter teaching in later years from other professions.

This proposal would eliminate all titles except that of professor, or doctor, when appropriate.

One Rat Race, Not Two

As explained by one USF professor, "The abolishing of the various ranks would eliminate a lot of the headaches and the mad scramble for rank. In the future there would be only one scramble, the one for salary. At present faculty members must keep one eye on the rank race and one on the dollar race."

Another faculty member had this to say, "Actually, I believe most USF faculty members are well satisfied with their rank and salary. In fact with the Florida sunshine we have had this winter you couldn't run me back north—I'm satisfied."

As the faculty members discuss the question there lines up arguments both for and against the proposal. This question will probably end up in the University Senate at some future date for a vote.

A Few Arguments

On the side for changing in accord with the proposal are these arguments:

1. The ranking system is a major source of faculty jealousy and frustration.

2. The problem is further complicated by the fact that clear cut criteria and evidence

for promotion are difficult to establish, particularly for the normal faculty member.

3. It is doubtful whether promotion is as good a method of incentive and recognition as other devices readily available.

On the other side, arguments for retaining faculty ranks include:

1. Ranks are now widely employed in higher education and new faculty members expect such designation. Unless they can be assured of a title that is as high or even higher than their previous one, a position here might lose some of its appeal. Hence we need a ranking system for recruiting purposes.

2. Ranks serve as an incentive for faculty activity and growth. A man knows that his chances for advancement rest on the quality of his teaching and therefore shows extra effort.

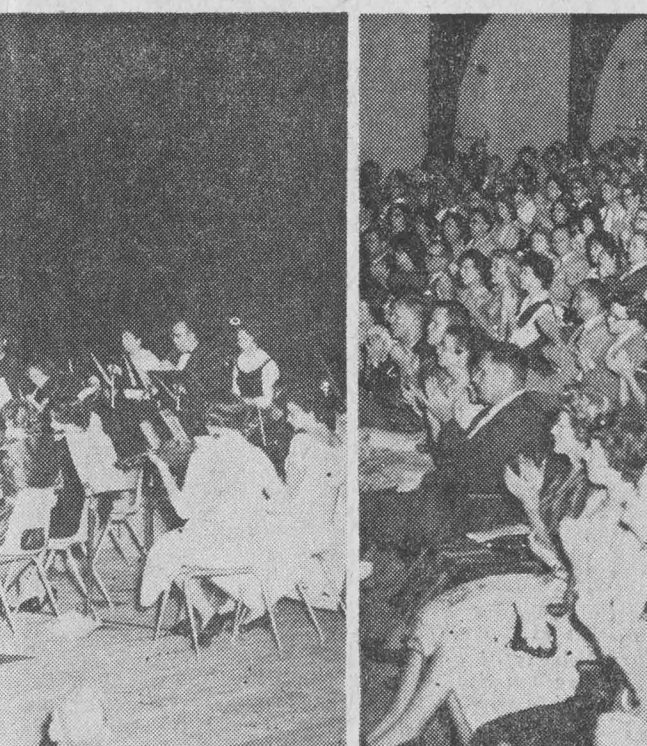
3. There is the matter of university reputation. Would other great universities which now use the rank system understand and accept this departure from the professional stereotype?

He's for It

Another faculty member said, "I would like to see USF go along with this proposal, if for nothing than else because we are a brand new university following the trend in education now in effect of experimentation. We know how the rank standard works as we have seen it in other colleges and universities."

The new method would allow more competition with business. For example, an up and coming top scientist who has just received a masters degree is offered an instructorship—the bottom of the ladder—and with a salary probably not above \$6,000, and is also offered a job in industry with more prestige with a salary of \$8,000. Even if this individual wants to teach, what choice is the most logical?"

Regardless of the outcome at USF, this topic will be one of many more discussions in the near future among the faculty on campus.



A capacity crowd jammed the Teaching Auditorium-Theater last Tuesday evening for a double first, the first event in the new building on the USF campus and the first appearance of the University-Community Symphony Orchestra. In the photo at the left Dr. John S. Allen, University of South Florida president,

and Mrs. Allen congratulate Prof. Edward Preodor, director, on the orchestra's successful opening night performance. In the center photo Professor Preodor leads the 33 musicians in one of their numbers. The photo at the right shows part of the full house of approximately 600 persons who attended the opening

night and enthusiastically applauded each number of the performance. Following the performance a reception in the foyer honored Professor Preodor and other members of the symphony. The attentive crowd was made up of students and faculty, residents of the Tampa Bay area, and a number from a much greater

distance, two enthusiastic members of the audience being Mr. and Mrs. Herbert H. Lewis from El Paso, Tex. The Teaching Auditorium-Theater will now house all major events on campus as well as be the home for many of the larger lecture sections scheduled in the future.



INTRAMURALS

# Four Tournaments To Be Held Soon

The Spring Intramural Softball League, sponsored by the physical education staff, will begin play Wednesday, March 22, Richard D. Hunter, coordinator, announced this week.

The League is expected to run until the end of May, with games being played weekly on Wednesdays at 4:15 p.m.

Players are urged to form teams from registration groups or independently. Any team wishing to practice this week, prior to league play, contact Hunter in the P.E. office.

Games are scheduled to be played on the intramural football field east of the Administration Building.

**Faculty Softball Team**  
Faculty members are organizing a team to enter the league hoping to show the youngsters how to play.

USF's first student and faculty tennis tourney scheduled to run 5 days, has been planned by the intramural staff for March 27-31.

Hunter said upon announcement that there is a possibility of playing the tourney on the University's own courts, if they are finished on schedule. Otherwise the facilities at Chamberlain High School will be used.

**Prizes, Exclusive Club**  
The finals of the singles tournament will probably be held at Davis Island Tennis Club. Prizes will be awarded to the finalists and some of the top players will be selected to form a tennis club which will consist only of the better players.

Two other tourneys are scheduled for this semester, one in April and the other in May. The day's activities will begin at 4 p.m. on the announced dates.

An All-Campus Golf Tournament, sponsored by the intramural staff, will be held during the last week of March.

Matches will be played at Temple Terrace Golf Club.

Sign-up sheets for tennis and golf are available at the information desk of the University Center and the P.E. offices.

The All-Campus track meet will be held April 3.

All of these events are open to both men and women, students and faculty members.

## Professional Play Coming To USF Soon

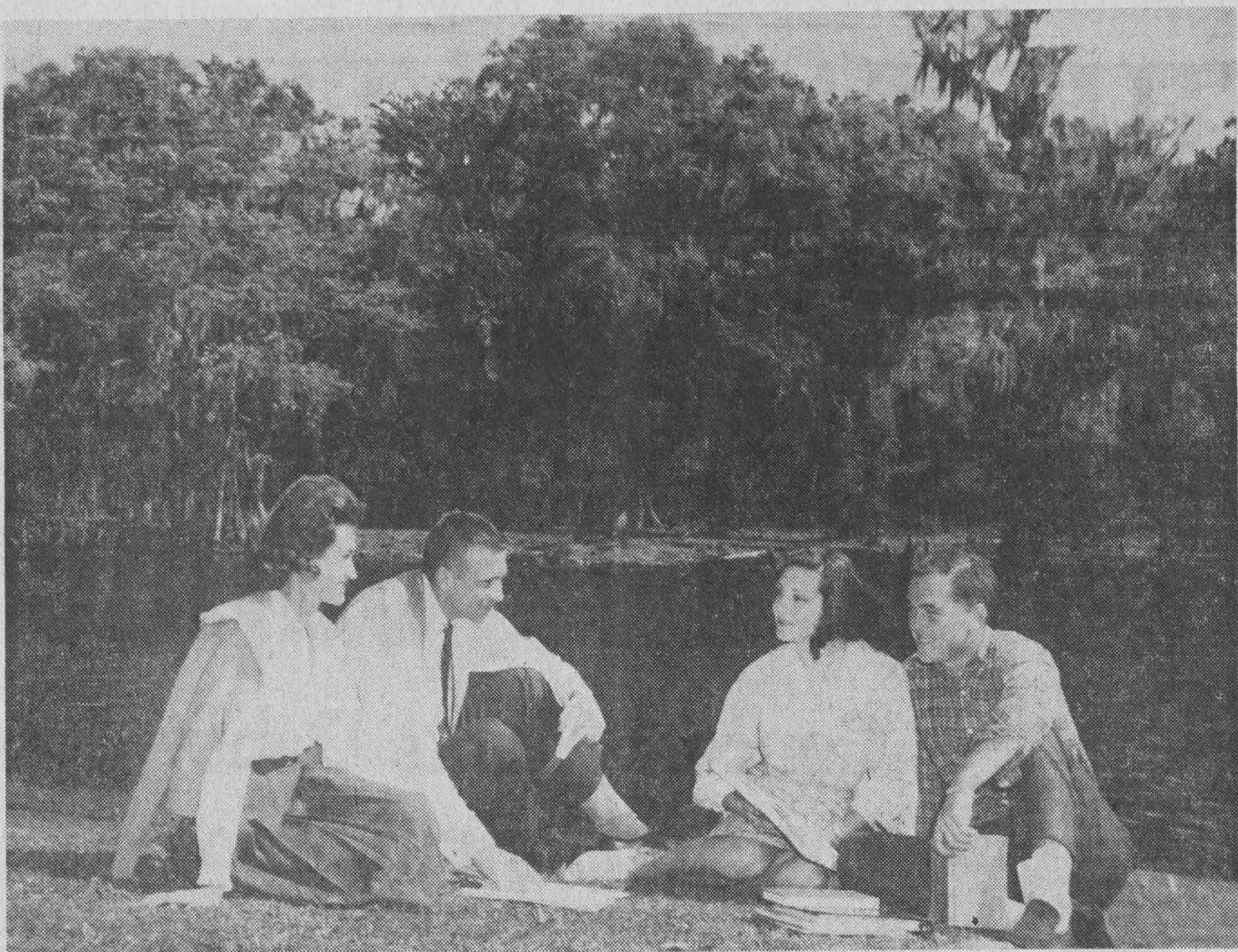
"Assignment in Judea" will be the first professional play to be held in the University of South Florida's new Teaching Auditorium-Theater. A professional company will give performances on March 20, at 3:15 p.m. and at 8:30 p.m.

There will be an admission charge of \$2 but students and staff at the University will be admitted for \$1. Tickets may be obtained at the cashier's office in the Administration Building.

The two starring positions will be filled by Eddie Dowling and Louise Allbritton. Dowling will play Judas in the play and Louise Allbritton will play the feminine lead, which portrays the betrayal of the Christ.

Dowling is a well known author, producer and actor. His productions have won four New York Drama Critics Circle Awards, and one Pulitzer Prize. Louise Allbritton is known for her acting in both the theater and in motion pictures. She played on Broadway in "The Seven Year Itch" and "Third Person." She has just returned from three years in England where she played in "A Touch of the Sun" by N. C. Hunter, with Sir Michael Redgrave. She also did four 90-minute television shows for British television.

The setting of the play is in the palace of Pontius Pilate and the story revolves around the crucifixion of Christ.

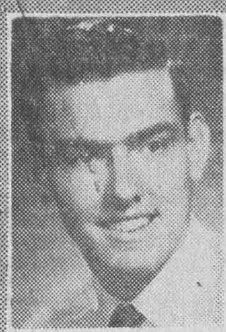


USF CAMPUS ALONG THE HILLSBOROUGH RIVER  
Four USF students discuss their spring semester study load on the bank of the Hillsborough River which borders the USF campus on the northeast. In the general area the University plans to develop a student recreational area some time in the future. For

unknowing students the Hillsborough River was named for the Earl of Hillsborough, a British official during England's reign in this area. Blockade runners also operated from the lower reaches of the river during the War Between the States.

## USF Sports

by John Gullett



### Immediate Start Recommended

Further investigation into the issue of intercollegiate athletics has turned up nothing new, except several additions to the "pro" side for an immediate start. Those questioned on this "tender spot in the side" of the administration at the University of South Florida include:

Col. M. L. Martin, athletic director of the Air Force Academy in Colorado; Bill Beck, sports editor of THE ST. PETERSBURG TIMES; Sam Davis, former chairman of the Tampa Chamber of Commerce sports committee, and Robert Carlton, a Tampa lawyer and present chairman of the sports committee.

Col. Martin, in a letter to the editor of this column, related how his institution handled an almost identical problem a few years back. "Our first year we competed against freshman teams and junior colleges; our second year against junior colleges and small four-year colleges, and from that time on against four-year colleges."

The Academy has since graduated its first class, and Martin implies that there was nothing but success derived in an early entrance into varsity sports. "Our decision was to start with the first year, and it is one that we have never regretted. We believe our student morale was helped by our early start. "Finances are certainly a problem and an always-present one. To secure the athletes that will meet your admission and curriculum requirements at a new school is not an easy task, but regardless of the year you start it will be a problem. The better athletes generally will go to the school with an established athletic reputation."

When commenting on personal benefits to the students in such a program, Martin said, "Our cadets took pride in their new and small enrollment school going against, and in so many cases with success, the big ones."

It seems though that South Florida is lacking in pride as a strong and united student body.

As for outside help, the Tampa Sports Committee is only waiting for some kind of plan in order to get in back of it and give their support. Davis, who served as chairman for 14 years prior to 1959, said, "We would be glad to help the University in promoting its sports program in every possible way." Although unable to give financial support, the committee has great influence in the Central Florida area. Past sub-committees have helped sponsor such events as the Tampa Tarpon Tourney, the Dixie Tennis Tourney, and the Gasparilla sailing and boating races. In general they furnish financing for particular events through public relations.

One bright spot in the area of facilities gleams from the stadium sub-committee of the Sports Committee. Chairman Robert Carlton told this column of a possible stadium in the future which would be available for USF use. "We are working with the Florida State Fair Commission on plans for a stadium at the Fair's future site. A delay is in effect because of the commission's indecision on the location of the site."

The privileges of using this stadium may be of little use, since football is a long way off, but at least it shows the public's eagerness to help. As Carlton said, "We realize with growth the University will be entering into a full athletic program. We would like to shorten the time of entrance." Davis emphasized the importance of initial action by Dr. Gilman Hertz, director of physical education, in gaining the committee's help. "The activity has to be done by Hertz. We will

## The Tampa Times

University of South Florida Campus Edition  
(Page 1 and Page 2 Staff)

Editor ..... Virginia Montes  
Managing Editor ..... Bill Blalock  
Sports Editor ..... John Gullett  
Copy Editor ..... Martha Ekker  
Faculty Adviser ..... George H. Miller  
Other staff members: Betty Woodard, Wing Preodor, Steve Maxwell, Glenn Mattheus and Carol Martin.

Address all communications to Office of Campus Publications, Room 224, University Center. Phone WE 8-4131, Ext. 118.

of sport. USF's decision to await full facilities before moving a muscle may have put the cart before the horse. That is not the way intercollegiate sports developed in any other college in the country."

Beck proposed a possible incident in a session of the legislature in the future. "USF, having graduated its first class, is now ready for its facilities."

"We need a field house for our basketball team," you tell the legislature.

"What basketball team?" inquires Senator Claghorn. "Well, the one we are going to have when we get a field house," you say rather weakly. "It just isn't going to work."

Beck compares another new university with South Florida. "Florida Presbyterian in St. Petersburg has less than USF. "Four years from now, we can measure the progress of both in the intercollegiate field and see which, in the words of your Dr. Gilman Hertz, started at the bottom and built a good foundation."

**C.C. CURRY** 103 Franklin 2-8448  
**MICROFILM SERVICE**  
NOW - IN YOUR OFFICE

### How To Hold FALSE TEETH More Firmly In Place

Do your false teeth annoy and embarrass by slipping, dropping or wobbling when you eat, laugh or talk? Just sprinkle a little **PASTEETH** on your plates. This alkaline (non-acid) powder holds false teeth more firmly and more comfortably. No gummy, goopy, pasty taste or feeling. Does not sour. Checks "plate odor" (denture breath). Get **PASTEETH** today at drug counters everywhere.

## A MONUMENT IS A PERMANENT MARK



of love, respect and memory. It is also a symbol of eternal life. For that reason, they are made of marble which expresses beauty, refinement, and permanence, or of granite which conveys the thought of being everlasting.

We use the greatest care in selecting the material and performing the work on each one we build to make it worthy of its purpose.

### TURNER MARBLE & GRANITE CO.

Leader in the Memorial Industry for 50 Years  
2601 East Broadway (7th Ave.) Tampa, Fla. Phone 4-2526

## These "Battle Flags" fly 24 Hours per Day!

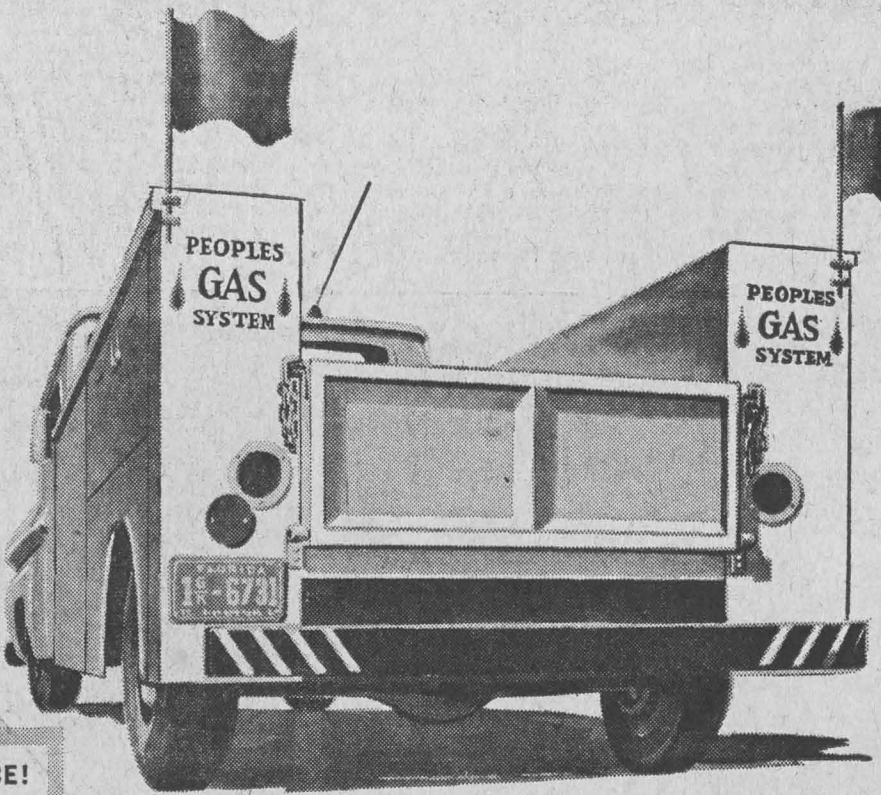
We've declared war! We're burned up by all this talk about temperamental, complicated appliances... and discourteous, doubletalking repairmen you can't depend on to fix them. We say that may apply to other types of home service... but not to us!

If you are a Peoples customer... we take care of your appliances. We know how... we're fully trained in our jobs... we have the parts. And we're out there 24 hours a day... those orange flags on our service trucks fly day and night... symbols of the 100% service that's been our policy for over 65 years!

**ENJOY "MATCHLESS" PERFORMANCE!**  
Automatic lighters add the final touch to the admitted speed and economy of natural gas appliances. Long life, long guarantees and easy terms are other reasons why natural gas is... "just naturally best!"

## Peoples GAS SYSTEM

NORTH MIAMI • MIAMI BEACH • FORT LAUDERDALE • HOLLYWOOD • TAMPA



**HERE'S THE SCORE:** Inspection and check-up calls are free... if parts or repairs are needed charges are absolute minimum. We trust you... no C.O.D. ... you pay on your bill. And we guarantee complete satisfaction. Why not call your Peoples office... end your service problems once and for all!

**RADIO DISPATCHED... 24 HOURS A DAY**

215 TAMPA ST.  
PHONE: 2-7121

**SPRING FEVER STEAK SPESHIL \$6.00**  
Includes a pep pill, a Chateaubriand for 2 and a Thunderbird headed for the open road.

Without the T-Bird U.S. Prime ....\$7.50

Cocktails Served  
All Major Credit Cards Honored

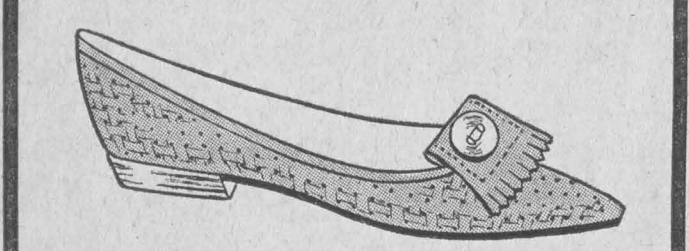
**BERN'S STEAK HOUSE**  
Open every day at 5 P.M.  
1208 S. Howard Ph. 8-8302 or 82-3891  
4 Bkls. N. Bayshore Royal Hotel

**HOT TIP**  
FOR HOUSE DECORATORS!  
USE **LUCITE** WALL PAINT  
19 Decorator Colors  
**BANNING** PAINT SERVICE, INC.  
300 S. Franklin St.  
2-3335 PHONES 2-3664

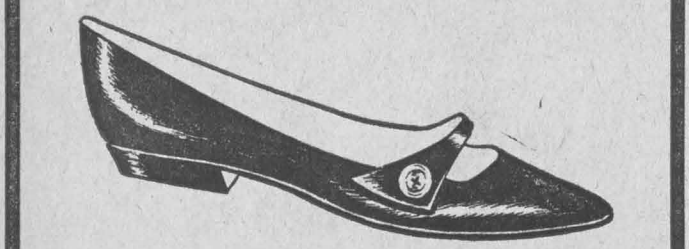
**GRAND WAY DISCOUNT CENTERS**

**EASTER PARADE OF SHOE DISCOUNTS**

**FOR THE ENTIRE FAMILY**  
Men, Women, and Children know GRAND-WAY for size, selection and smartly styled shoes... all at GRAND-WAY rock-bottom prices!



**WOMEN'S FASHION FIRST FLATS**  
Step into Spring with the tapered toe smartness of the year! Soft punch pig leather and fashionable flap with button. Choose from white or beige. Sizes 4 to 10.  
COMPARABLE VALUE \$2.69 **1.87 SAVE 82c**



**HOLIDAY SHOES FOR WOMEN & GIRLS**  
Ideal for the Easter season! So highly styled and comfortable too. Available in gleaming patent leather, black leather and white leather. Sizes 4 to 10.  
COMPARABLE VALUE \$3.69 **2.87 SAVE 82c**

**HILLSBOROUGH & ARMENIA**  
PRICES EFFECTIVE THROUGH WEDNESDAY, MARCH 15th

LETTER TO THE EDITOR

## Faculty Medallions

Dear Editor:  
You will recall that last semester each student was given a medallion in commemoration of the charter class of the University. Although I am only a part-time student, I certainly appreciated receiving my medallion and prize it very highly.

From various conversations I have learned that the faculty did not receive such a medallion. I also know that a number of them would like very much to have one. However, no provisions have been made for supplying medallions for the faculty. This is probably because there are no funds available for such an expenditure.

There are a number of student organizations on campus and several student leaders who, I am told, show that they have the ability to sponsor and promote a program to raise funds to purchase a sufficient quantity of medallions to be used as gifts to the faculty. The reverse side of the medallion could read, "From An Appreciative Student Body." This, of course, would be embossed on the outer face of the medallion.

with the center of the medallion carrying, "Charter Faculty 1960-1961." The cost per medallion is modest.

This would be a most worthwhile activity and, if properly handled, could very easily be done this semester even though time is running short. Of course, you realize that once this semester is over it will never again be possible to sponsor such a program. In the event that you and some of your classmates wish to start such a project, I would be glad to make a small contribution anonymously to help you get started.

A. K. Mason  
Dear Mr. Mason:  
I am sure that many members of the student body and the faculty agree with you wholeheartedly. The staff, I'm afraid, is too busy to take on such a project. However, there may be other organizations or persons who would be willing to take on the responsibility. If there is, the paper would be happy to receive further comments on this subject.

Editor

**SPRING MOTOR TUNE-UP**

**THIS WEEK'S SPECIAL FOR PEP, POWER, GET-UP AND GO \$5.50 ALL LABOR FOR MOST ALL MAKES**

FREE - Pickup and Delivery for University of South Florida and 2-Mile Radius.

**NORTHSIDE PLYMOUTH, INC.**  
10415 Florida Ave. Phone WE 5-3103

**A MONUMENT IS A PERMANENT MARK**

of love, respect and memory. It is also a symbol of eternal life. For that reason, they are made of marble which expresses beauty, refinement, and permanence, or of granite which conveys the thought of being everlasting.

We use the greatest care in selecting the material and performing the work on each one we build to make it worthy of its purpose.

Orders to be completed by Easter should be placed at once.

**TURNER MARBLE & GRANITE CO.**  
Leader in the Memorial Industry for 50 Years  
2601 East Broadway (7th Ave.) Tampa, Fla. Phone 4-2526