

4-2015

First Choice - April 2015

WUSE, University of South Florida

Follow this and additional works at: http://scholarcommons.usf.edu/wusf_first

Scholar Commons Citation

WUSE, University of South Florida, "First Choice - April 2015" (2015). *First Choice Monthly Newsletter*. Paper 89.
http://scholarcommons.usf.edu/wusf_first/89

This News Article is brought to you for free and open access by the WUSF at Scholar Commons. It has been accepted for inclusion in First Choice Monthly Newsletter by an authorized administrator of Scholar Commons. For more information, please contact scholarcommons@usf.edu.

firstchoice

FOR INFORMATION, EDUCATION AND ENTERTAINMENT • APRIL 2015



photo: Courtesy of Stephanie Berger

wusftv

Cancer: The Emperor of All Maladies

This three-part film presented by Ken Burns tells the comprehensive story of cancer, from its first description in an ancient Egyptian scroll to the gleaming laboratories of modern research institutions.

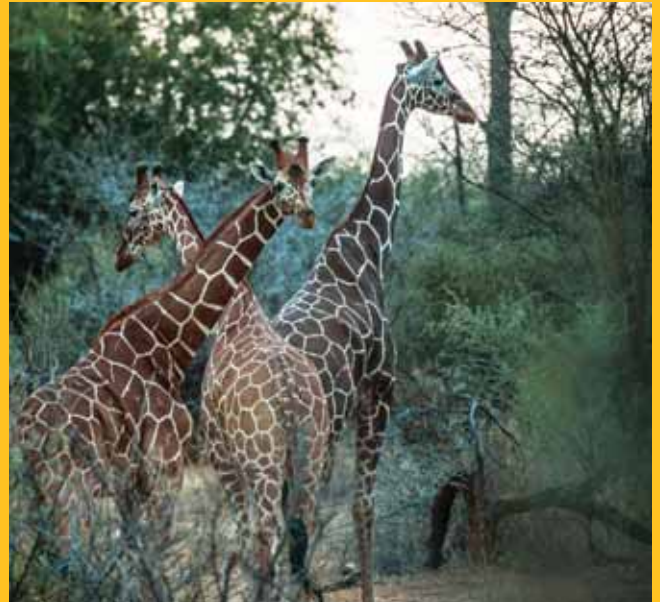
Sweeping historical narrative and contemporary stories are interwoven with the investigation into recent scientific breakthroughs.



Airs Sundays, 9 p.m., beginning April 5.



Shetland This new British crime drama features Detective Inspector Jimmy Perez who must break through the suspicion and fear of a community that is now facing the reality of a killer in their midst. Helping Perez are Detective Sergeant McIntosh, and Detective Constable Wilson. Airs Wednesdays, 10 p.m., beginning April 1.



EARTH: A New Wild Hosted by Dr. M. Sanjayan, this five-part series combines spectacular natural history images with compelling human stories. Discover how our relationship with the greatest natural history events on the planet can provide a key to preserving our present. Airs Thursdays, 9 p.m., beginning April 9.

Where to Watch

Over the Air

- 16.1 WUSF TV (HD)
- 16.2 WUSF Kids
- 16.3 WUSF Create
- 16.4 WUSF Knowledge

WUSF on Bright House

- 1016 WUSF TV (HD)
- 616 WUSF TV
- 617 WUSF Kids
- 618 WUSF Create
- 619 WUSF Knowledge

WUSF on Comcast

- 441 WUSF TV (HD)
- 204 WUSF TV
- 205 WUSF Kids
- 206 WUSF Create
- 207 WUSF Knowledge

WUSF on Verizon FiOS

- 516 WUSF TV (HD)
- 016 WUSF TV
- 470 WUSF TV
- 473 WUSF Kids
- 472 WUSF Create
- 471 WUSF Knowledge



What happens when **Bob the Builder** goes from the construction site to the classroom? Fun and learning, of course! Find out more online at www.wusf.org/bob.



Doc Martin alert! Doc is taking a short hiatus from the schedule starting in late April and will return mid-summer. In the meantime, enjoy the new British drama, **WPC 56**. Set in 1956, Gina Dawson – the only woman police constable (WPC) on the force – struggles to overcome sexist attitudes. Airs Tuesdays, 9 p.m., beginning April 28.



Coastal Dune Lakes:

Jewels of Florida's Emerald Coast

The coastal dune lakes of northwest Florida are home to many diverse species. Some of them are endangered, including the loggerhead sea turtle, the snowy plover, and the Choctawhatchee beach mouse. These lakes also offer locals and visitors a peaceful haven, which has led to an increase in human activity resulting in both positive and negative effects. Journey with filmmaker Elam Stoltzfus to see what makes these lakes unique and how they are being protected. The film explores what local organizations are doing to ensure that future generations can enjoy Florida's natural beauty and endangered wildlife, and also travels to New South Wales, Australia, to offer insight about the rare phenomenon of coastal dune lakes around the world. Airs Thursday, April 2, 8 p.m.

Wednesday 1st

- 8:00pm Great Continental Railway Journeys "Berlin to the Rhine"
- 9:00pm Genealogy Roadshow "Best of Genealogy Roadshow"
- 10:00pm Shetland "Pilot," Part 1

Thursday 2nd



- 8:00pm Coastal Dune Lakes: Jewels of Florida's Emerald Coast
- 9:00pm Nature "My Life as A Turkey"
- 10:00pm Big Cypress Swamp: The Western Everglades

Friday 3rd

- 8:00pm Antiques Roadshow "Bismarck," Part 2
- 9:00pm Miss Fisher's Murder Mysteries "The Blood of Juana the Mad"
- 10:00pm Midsomer Murders "The Straw Woman," Part 1

Saturday 4th

- 8:00pm Death In Paradise
- 9:00pm Saturday Night Movie "Barabbas" (1961)

Sunday 5th

- 7:00pm NOVA "The Bible's Buried Secrets"
- 9:00pm Cancer: The Emperor of All Maladies "Magic Bullets"

Monday 6th

- 8:00pm Rick Steves' Europe "Copenhagen"
- 8:30pm Rudy Maxa's World "South Africa: Garden Route & Wine Country"
- 9:00pm Joseph Rosendo's Travelscope "A San Antonio Christmas"
- 9:30pm Journeys In Africa "Kruger - Hunt for the Cheetah"
- 10:00pm Globe Trekker "Mumbai City Guide"

Tuesday 7th

- 8:00pm Father Brown "The Sign of the Broken Sword"
- 9:00pm Doc Martin "Hazardous Exposure"
- 10:00pm Scott & Bailey

Wednesday 8th

- 8:00pm Great Continental Railway Journeys "Switzerland"
- 9:00pm Time Team America "Fort Raleigh, North Carolina"
- 10:00pm Shetland "Pilot," Part 2

Thursday 9th

- 8:00pm Nature "Animal Homes: The Nest"
- 9:00pm EARTH A New Wild "Home/Plains"
- 10:00pm Secret Life of Elephants, Part 1

Friday 10th

- 8:00pm Antiques Roadshow "Bismarck," Part 3
- 9:00pm Miss Fisher's Murder Mysteries "Framed for Murder"
- 10:00pm Midsomer Murders "The Straw Woman," Part 2

Saturday 11th

- 8:00pm Death In Paradise
- 9:00pm Saturday Night Movie "Black Narcissus" (1947)

Sunday 12th



- 8:00pm Nova "The Incredible Journey of the Butterflies"
- 9:00pm Cancer: The Emperor of All Maladies "The Blind Men and the Elephant"

Monday 13th

- 8:00pm Rick Steves' Europe "Denmark: Beyond Copenhagen"
- 8:30pm Rudy Maxa's World "Korea"
- 9:00pm Joseph Rosendo's Travelscope "Taiwan Lantern Festival"

Monday 13th continued

- 9:30pm Journeys In Africa "St. Lucia - Zulu Wilderness"
- 10:00pm Globe Trekker "Poland"

Tuesday 14th

- 8:00pm Father Brown "The Last Man"
- 9:00pm Doc Martin "Listen with Mother"
- 10:00pm Scott & Bailey

Wednesday 15th

- 8:00pm Great Continental Railway Journeys "Amsterdam to Northern France"
- 9:00pm Time Team America "Topper, South Carolina"
- 10:00pm Shetland "Raven Black," Part 1

Thursday 16th

- 8:00pm Nature "Animal Homes: Location, Location, Location"



- 9:00pm EARTH A New Wild "Plains"
- 10:00pm Secret Life of Elephants, Part 2

Friday 17th

- 8:00pm Antiques Roadshow "Birmingham," Part 1
- 9:00pm Miss Fisher's Murder Mysteries "Death on the Vine"
- 10:00pm Midsomer Murders "Ghosts of Christmas Past," Part 1

Saturday 18th

- 8:00pm Death In Paradise
- 9:00pm Saturday Night Movie "Gone with the Wind" (1939)

Sunday 19th

- 8:00pm Nova "Emperor's Ghost Army"
- 9:00pm Cancer: The Emperor of All Maladies "Finding the Achilles Heel"

Monday 20th

- 8:00pm Rick Steves' Europe "Istanbul"
- 8:30pm Rudy Maxa's World "Tahiti & Bora Bora"

Monday 20th continued

- 9:00pm Joseph Rosendo's Travelscope "La Joie De Vivre in Quebec City, Canada"
- 9:30pm Journeys In Africa "Kilimanjaro - Roof of Africa"
- 10:00pm Globe Trekker "Tough Trains: Vietnam"

Tuesday 21st

- 8:00pm Father Brown "The Upcott Fraternity"



- 9:00pm Doc Martin "Departure"
- 10:00pm Scott & Bailey

Wednesday 22nd

- 8:00pm Great Continental Railway Journeys "Madrid to Gibraltar"
- 9:00pm Time Team America "New Philadelphia, Illinois"
- 10:00pm Shetland "Raven Black," Part 2

Thursday 23rd

- 8:00pm Nature "Animal Homes: Animal Cities"
- 9:00pm EARTH A New Wild "Forests"
- 10:00pm Secret Life of Elephants, Part 3

Friday 24th

- 8:00pm Antiques Roadshow "Birmingham," Part 2
- 9:00pm Miss Fisher's Murder Mysteries "Dead Air"
- 10:00pm Midsomer Murders "Ghosts of Christmas Past," Part 2

Saturday 25th

- 7:30pm 30 Days to a Younger Heart with Dr. Steven Masley
- 9:00pm Joe Bonamassa: Muddy Wolf at Red Rocks
- 10:30pm Motown 25 (My Music Presents)

Sunday 26th

- 7:30pm John Denver: Country Boy

Sunday 26th continued

- 9:00pm Suze Orman's Financial Solutions for You

Monday 27th

- 8:00pm Motown 25 (My Music Presents)
- 10:00pm Aging Backwards with Miranda Esmonde-White

Tuesday 28th

- 8:00pm Father Brown "The Kembelfored Boggart"
- 9:00pm WPC 56 "Sink or Swim"
- 10:00pm Scott & Bailey

Wednesday 29th

- 8:00pm Great Continental Railway Journeys "Turin to Venice"
- 9:00pm Time Team America "Range Creek, Utah"



- 10:00pm Shetland "Dead Water," Part 1

Thursday 30th

- 8:00pm Nature "Shark Mountain"
- 9:00pm EARTH A New Wild "Oceans"



- 10:00pm Wild! "Porpoises in Peril"



*Programs scheduled are subject to change after printing of this publication.