

April 2003

Intercom, Volume 39, No. 2, March-April 2003

Scott Dankof

Follow this and additional works at: <https://digitalcommons.usf.edu/intercom>

Recommended Citation

Dankof, Scott, "Intercom, Volume 39, No. 2, March-April 2003" (2003). *Intercom*. 33.
<https://digitalcommons.usf.edu/intercom/33>

This Book is brought to you for free and open access by the Newsletters and Periodicals at Digital Commons @ University of South Florida. It has been accepted for inclusion in Intercom by an authorized administrator of Digital Commons @ University of South Florida. For more information, please contact digitalcommons@usf.edu.

INTERCOM

Published Semi-spasmodically By
The Iowa Grotto

March - April 2003
Volume XXXIX Issue 2

I N T E R C O M

Volume 39, Issue 2
March - April, 2003

Iowa Grotto

P.O. Box 228
Iowa City, IA 52244

Membership Dues: due January 1, \$15.00 per year, includes INTERCOM and Hot-Line subscriptions. INTERCOM subscriptions only are \$13.00 per year. The Iowa Grotto reserves the right to decline membership during or after a probationary period.

Due Dates: for submission of material for publication in the INTERCOM are July 1 and September 1. Send material for publication, e-mail, disk or hard copy, to:

Editor and Typist: Scott Dankof 515-986-3219
410 Hickory Circle
Grimes IA. 50111

E-mail sdankof@msn.com

Coordinate photographs for publication in the INTERCOM with Scott Dankof, the INTERCOM photo and cover editor.

Cave Rescue: Contact the Kentucky Disaster and Emergency Services Central Dispatch at 502-564-7815 for cave emergencies only in the NCRC Central Region of Iowa, Illinois, Indiana, Michigan, Minnesota, Missouri, Ohio, and Wisconsin.

Iowa Grotto Meetings: are the fourth Wednesday of each month, third Wednesday in December at 7:30 p.m. in room 125 or thereabouts of Trowbridge Hall on the campus of the University of Iowa, Iowa City, Iowa.

Cover Photo: Doug Schmuecker in Copperhead Cave, Newton Co. Ark. Photo by: Scott Dankof



IOWA GROTTO
National Speleological Society
P. O. Box 228
Iowa City, Iowa 52244

Chairman - - - - - Mike Lace
Vice Chairman - - - - Ed Klausner
Secretary Treasurer - Phil LaRue

Volume 39

Issue 2

C O N T E N T S

Iowa Grotto Meeting Minutes - - - - -	26
Trip reports:	
Demise - - - - -	27
Right Length, Wrong Location - - - - -	27
Davis Bluff - - - - -	28
Shadow Cave - - - - -	29
Cave Maps:	
Calcite Dome Cave - - - - -	30
Corn Husk Cave - - - - -	30
Davis Bluff Cave - - - - -	31
Emmentaler Cave - - - - -	31
Near Toaster Cave - - - - -	32
Meyer's Cave - - - - -	32
Photo Gallery:	
Coldwater and Maquoketa Caves State Park - - - - -	33

IOWA GROTTA MINUTES
February 26, 2003
Regular Meeting

The meeting of the Iowa Grotto was called to order by chairman Mike Lace at 8:32 p.m., with 11 members and one guest, Mike Bounk, present after a slide show on caves of Iowa, Illinois and Kentucky. Minutes from the January 22, 2003, meeting were read and approved. A treasurer's report was given which showed balances of \$686.07 in the Coldwater fund; \$290.94 in the General fund; and \$147.97 in petty cash.

Dr. Elizabeth Miller then gave a presentation on the collection of Mosquitos for a study by Iowa State University, Professor Wayne Rowley, on the West Nile virus. Specifically, the collection of these insects from Iowa caves will hopefully provide information on whether or not these overwintering populations are harboring the West Nile virus. She explained the annual West Nile virus cycle, including the amplification cycle in avian species, and the speculative portion of the cycle for which she is providing assistance. She discussed the various diseases carried by mosquito's in Iowa (Western, St. Louis and Equine encephalitises), and that this bloodborne virus can be carried by 36 different species of mosquito. Mosquito population samples have been collected from Clinton, Fayette, Jackson and Jones County as of this date. Additional sampling will be preformed yet this winter from additional Iowa counties. She then discussed limitations in the sampling procedure, and demonstrated the sampling device and her technique. Following her excellent presentation, Dr. Miller answered a number of questions from meeting attendants. TRIP REPORTS: Mike Lace reported that an additional 320 feet of new passage has been surveyed above landmark falls at Coldwater Cave since the January meeting. In attendance on this surveying trip were Ed Klausner, John Lovaas and himself. Ed Klausner reported on trips with Chris Beck and Gary Engh to Jones County where 16 new caves have been surveyed this year. He continued his report on two C.R.F. trips to Mammoth Cave, Kentucky. John Lovaas was in attendance for one of the trips. Greg McCarty reported on a trip that he and Deb took to western Fayette County, where they visited a sinkhole with a landowner's son. He explained that using vertical gear he descended 20 feet to the bottom of the vertical sink, where he observed horizontal passage for an estimated 20 feet. A return trip will be needed as access was prevented by frozen conditions. FUTURE TRIPS: See the February Hotline and the N.S.S. News for details. Doug Schmuecker will also be doing mock rescue at Cold Water Cave in the future, and a vertical training session this April. Contact Doug if interested. OLD BUSINESS: Volume III Cave Map Book is available for \$25.00. Republished back issues of the Intercom are still available. The Grotto Library is still looking for library materials. Doug Schmuecker has given two caves rescue presentations to emergency rescue members. The annual picnic was discussed. Dutton's Cave County Park, Fayette County, will be the likely site for this year's picnic, the first weekend in August. NEW BUSINESS: The Intercom deadline is March 1st.. Mike Bounk, research geologist, Iowa Department of Natural Resources, provided the Grotto with two GIS maps of Coldwater Cave. One will be on display at Coldwater Cave and the other placed into the Grotto library. Greg McCarty reported that one of the Grotto's first members, Bill Alternader, has passed away. With no additional business, the meeting adjourned at 9:02 p.m..

IOWA GROTTA MINUTES
March 26, 2003
Regular Meeting

The meeting of the Iowa Grotto was called to order by Chairman Mike Lace at 7:30 p.m., with 7 members present. Minutes from the February 26, 2003, meeting were read and corrected. A treasurer's report was given which showed balances of

\$686.07 in the Coldwater fund; \$328.03 in the General fund; and \$162.97 in petty cash.

TRIP REPORTS: Ed Klausner reported on several trips to Jones County, where so far 19 caves have been surveyed. He continued his report on a trip to Jackson County with Gary Engh and Phil LaRue where one small cave was surveyed. Joe Dixon reported on a trip to Cape Flattery, Washington State, to see several sea caves on the Pacific coast. FUTURE TRIPS: See the March Hotline and the N.S.S. News for details. Doug Schmuecker will also be doing mock rescue at Cold Water Cave in the future, and a vertical training session to be arranged. Contact Doug if interested. OLD BUSINESS: Volume III Cave Map Book is available for \$25.00. Republished back issues of the Intercom are still available. The Grotto Library is still looking for library materials. Dutton's Cave County Park, Fayette County, will be the site for this years picnic, the first weekend in August. NEW BUSINESS: The Intercom deadline is May 1st.. The recent developments at Coldwater Cave were discussed. Following discussion, LaRue made a motion to continue the present access arrangements with the Flatlands and not utilize the well pipe access when completed. Klausner seconded the motion. Ayes: all. Joe Dixon then discussed with the members, the Nature Mapping Project. They retained their funding, and need assistance from the Grotto with bat and snake information (species, numbers, etc.). To make the information useful, they would like the data in hector area. It was agreed that the Grotto would provide location by County and Township. Mr. Dixon felt this would be adequate. Any information on bat and snake numbers, past and present would be helpful. With no additional business, the meeting adjourned at 8:40 p.m..

Demise

Skeptical Shelter, Outlook and Demise Caves, Jones County, IA by Ed Klausner
9 March, 2003
Gary Engh, Ed Klausner, Phil LaRue and Elizabeth Miller

Last month, Gary and I surveyed several small caves in a side valley along a creek that we had been ridgewalking. We called it quits for the day knowing there were more holes in the area to be surveyed. When we came back with Elizabeth and Phil, we were surprised to find that only one of the holes led to a cave. Skeptical Shelter was at first discounted by Elizabeth as being too short from dripline to the back, but that is because she didn't appreciate the existence of the 8 or 9 inch high last 10 to 15 feet. I squirmed in while carrying the end of the tape and was rewarded with a glorious length of 25.5 feet. The mouth of Skeptical Shelter was quite wide. Phil measured it to 58 feet across.

Phil later found a solutinal cave, Outlook Cave along the main creek valley and we surveyed it together. There were lots of fossils in the cave. The last cave was almost ignored, as it was only 15 feet long. We were cold and it was getting more windy. The cave offered no protection from the wind, but it was just too easy of a survey to pass up, so we quickly did the third survey of the day before calling it quits. We called it Demise Cave, not because of our frozen fingers, but the dead raccoon at the entrance.

Right Length, Wrong Location

Shock and Awe Cave, Clayton Co., IA by Ed Klausner
29 March 2003
Chris Beck, Gary Engh and Ed Klausner

So far this year, all the caves we've surveyed have been relatively small, so we were looking forward to one with walking passage and at least 100 feet of survey. Luckily, we found it, but not where we expected it.

Our first stop was a landowner to drop off some maps and show the new caretaker where a few of the mapped caves were located. On our way, we found a new, partially opened sinkhole that looked promising, but we had other plans for the day, so we took a GPS reading for future use.

Our destination was a neighbor, but he didn't know that and wasn't home. He had told us about a large, deep, open sinkhole that he had and it piqued our curiosity. There was nothing to be done, but look for something else to do. We could think of two choices; a pit with a dead deer or the sink we had just found. We really didn't need the GPS to find the sink we had located earlier in the day. After some digging, we realized that it was hopeless. Gary, fortunately, had found a series of sinkholes nearby, so we then took a look at them. After a bit of digging on each, one looked more promising than the rest. It had some air movement and there were some mosquitoes flying near the opening.

After some sediment and rock removal, we were able to get in. Chris descended about 30 feet, but suggested a handline as the walls were slippery. He went off to explore while I rigged a hand line.

At last, we had our 100 foot cave. We surveyed from the middle to the rubble choked end and then from the middle, we surveyed out. Total depth was 37 feet and surveyed length was 112 feet. Chris named it Shock and Awe Cave. It had evidently been opened for a while as we found two bats.

This was considerably better than the single talus cave that Gary, Phil LaRue and I found the previous week in Jackson County. That was only 18 feet long and Phil named it Lichen Faced Cave.

Davis Bluff

Unnamed, Davis Bluff, and Lost Tooth Caves, Jones Co., IA

27 April 2003

by Ed Klausner

Chris Beck, Ray Finn and Ed Klausner

We had seen two leads high on Davis Bluff several times, but never had vertical gear with us to be able to reach the entrance. Finally, on a warm spring day, Chris, Ray and I were able to see exactly what those entrances led to. Unfortunately, it wasn't much.

We started out by all going to the top of the bluff and picking a likely spot to anchor the rope. When Chris rappelled down, it turned out he was between the two caves with no way to go laterally. With Ray's help from the bottom, Ray was able to direct us to a spot above one of the entrances. Chris found a 15 foot cave that he surveyed alone.

We moved the rope and it was my turn to see what was below. Again, it turned out to be a small cave that we named Davis Bluff Cave. It was about 50 feet down the cliff face and about that high off the bottom. Davis Bluff is a locally known name for a stretch of bluff where a local met his demise.

Ray had other plans and we had none, so we tried to find something else to do for the rest of the day. The first two stops were to landowners who weren't home. Finally, I remembered a nearby spot where we had previously seen what looked like a cave entrance where the landowner hadn't been home. Luck was with us and not only was he home, but Chris knew him from work. We quickly got permission and set off for his only stretch of exposed rock. What we saw was a shadow, but there was a small solutional cave around the corner. It was 18 feet long, but 5 feet high in places (of course, it was too narrow to actually stand in that 5 feet, but this is Iowa after all.) We named it Lost Tooth Cave in honor of the cow tooth we found near the entrance.

We were out of time, out of rock, and out of nearby leads, so we called it a day.

Shadow Cave

Shadow Cave, Iowa Co., Wisconsin

by Ed Klausner

4 May 2003

Chris Beck, Ed Klausner, John Lovaas, Bruce Oftedahl, Dawn Ryan, and Amy Jo Aurit

The WSS had dug open a sinkhole in Iowa County, Wisconsin and found horizontal passage and a small pit. They wanted to survey the cave so they could produce a map. The WSS was also interested in starting an inventory of caves in Wisconsin. We made arrangements to meet and use this cave for Dawn to learn how to sketch and Bruce to get some practice doing cross sections. Chris brought along his GPS so the location of the cave could be used for the WSS cave inventory. Pat Kambesis helped provide several examples of cave inventories from other states.

We met in the nearest town to the cave and headed over to the landowner's house. The fields were fairly dry and we were able to drive close to the sinkhole. The sinkhole was oval shaped, about 25 feet across (long axis) and 8 feet deep. There was a spring a few hundred feet away feeding a small amount of water that fell into the sinkhole. Bruce said that we could expect a small pool of water at a tight spot near the entrance that would probably get us wet before reaching the dryer part of the cave. Fortunately, the pool was mostly dried up and we all avoided surveying while wet.

I helped Dawn with plan and profile views while Bruce did cross sections. Chris and John taught Amy Jo how to read compass and clino and set stations.

The majority of the cave was in sandstone with large blocks of collapse. Water entering the cave was, for the most part, absorbed by the sandy sediment. The entrance area had the beginnings of several stalactites. There were several rooms where we could sit up and catch up on sketching. The small crawlways between these rooms were not conducive to careful sketching.

Near the end of the cave there was a small pit. The interesting thing about the pit was that it was in dolomite. The contact between the sandstone and dolomite was pretty clear. The pit (about 8 feet deep) had mostly mud on the bottom, but there was also a small standing pool of water. The sides of the pit pinched together on either end. The WSS had dug on the pit on previous trips, but it seemed hopeless.

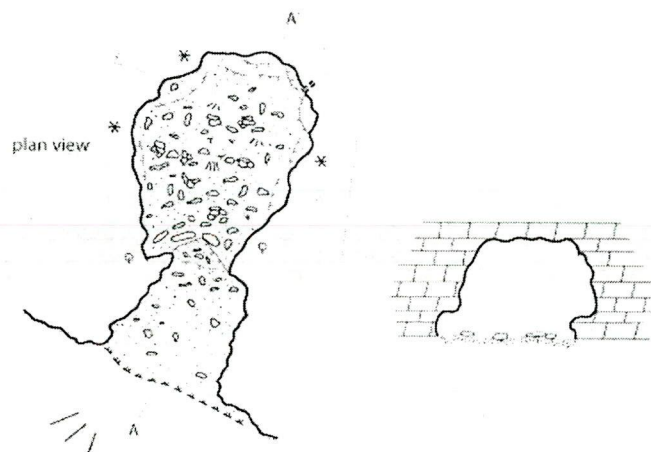
The cave was relatively short, about 75 feet, but not a very easy cave to sketch for the first time sketching.

It was Amy Jo's job to name the cave. After some thought, she named it Shadow Cave in honor of her recently deceased dog.

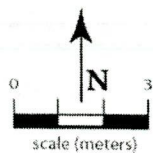
When we got out of the cave, we investigated another sinkhole a few hundred feet away. The trend of the cave passage of Shadow Cave was towards that second sinkhole. Perhaps it will open up someday, or will have some digging help.

Calcite Dome Cave

Jones County, Iowa



surveyed 1/26/2003 by
Gary Engh
Ed Klausner



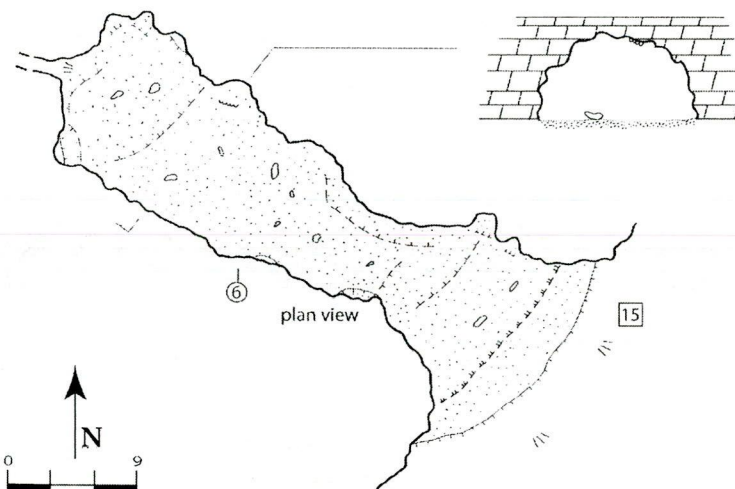
N.S.S. standard map symbols
total surveyed length = 8.59 meters (28.2 feet)



Klausner 2003

Corn Husk Cave

Jones County, Iowa



surveyed 12/28/2002 by
Ed Klausner
Elizabeth Miller



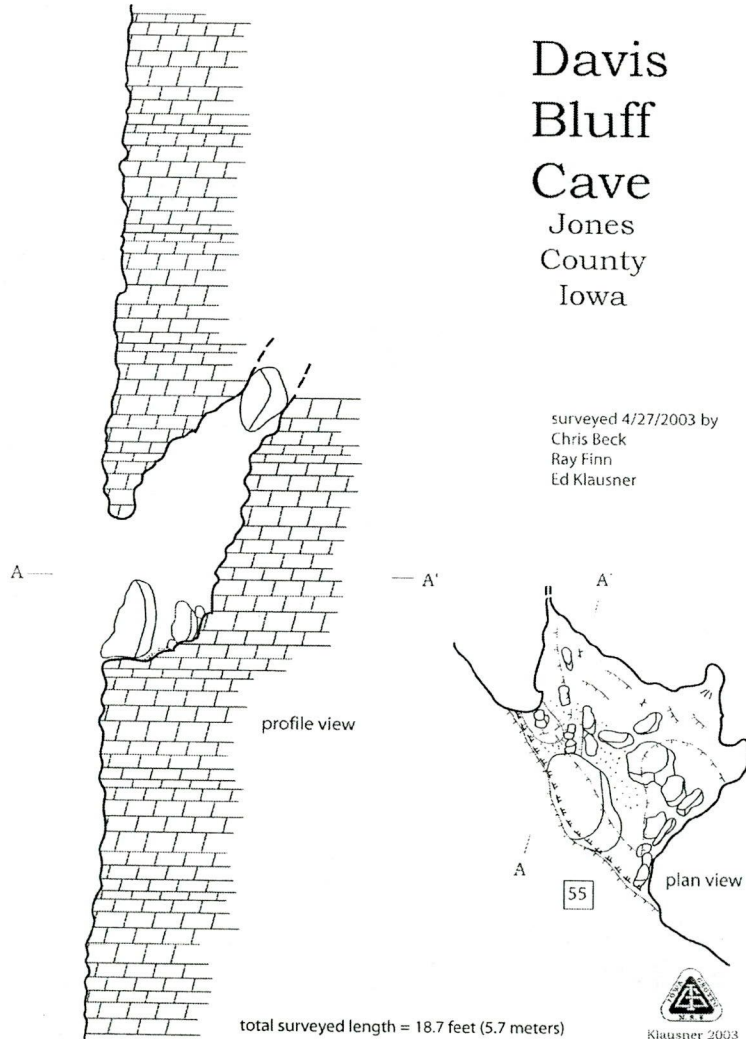
Klausner 2003

N.S.S. standard map symbols
total surveyed length = 34.2 feet (10.4 meters)

Davis Bluff Cave

Jones County
Iowa

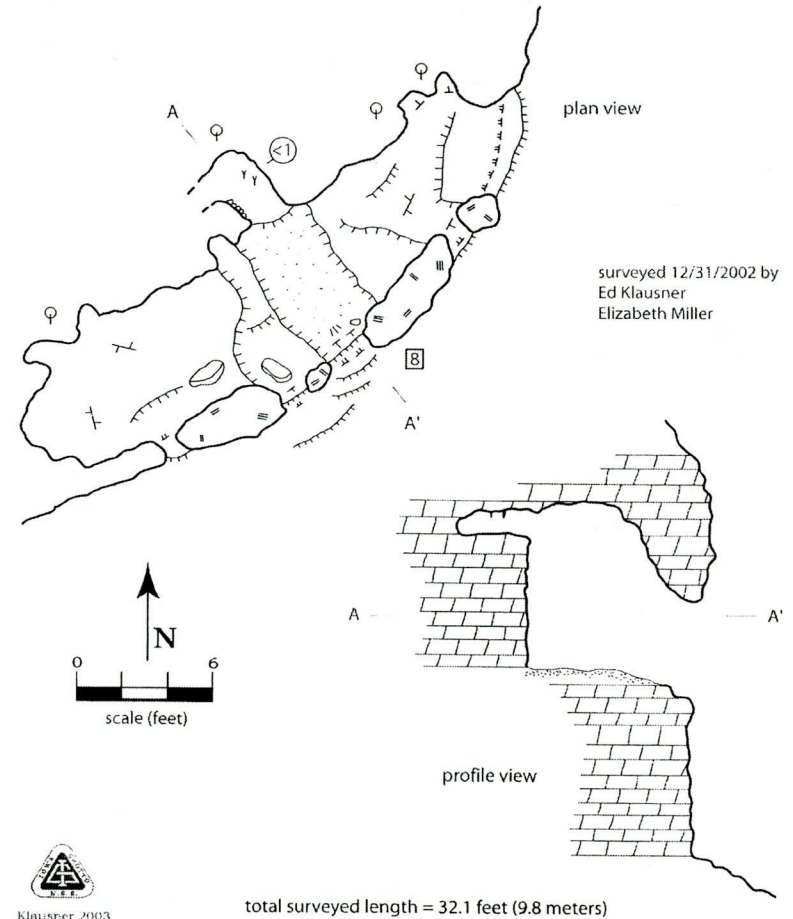
surveyed 4/27/2003 by
Chris Beck
Ray Finn
Ed Klausner



Emmentaler Cave

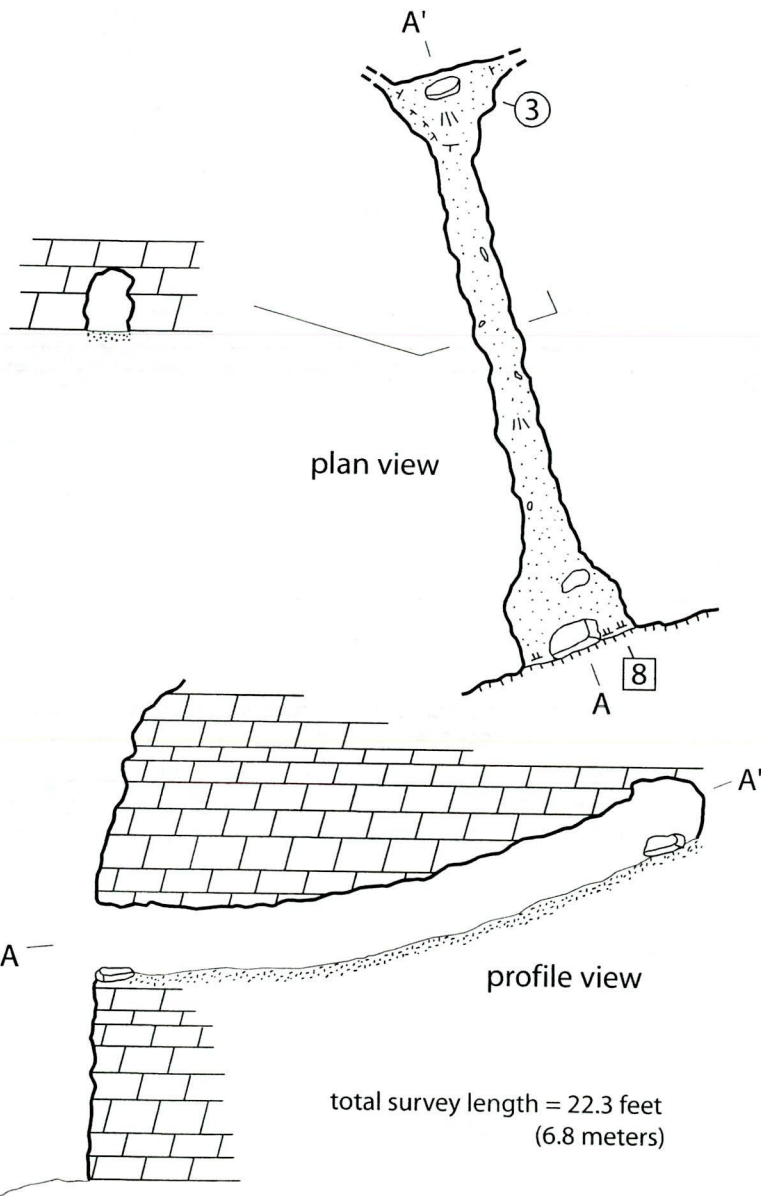
Jones County, Iowa

surveyed 12/31/2002 by
Ed Klausner
Elizabeth Miller



Near Toaster Cave

Jones County, Iowa



total survey length = 22.3 feet
(6.8 meters)

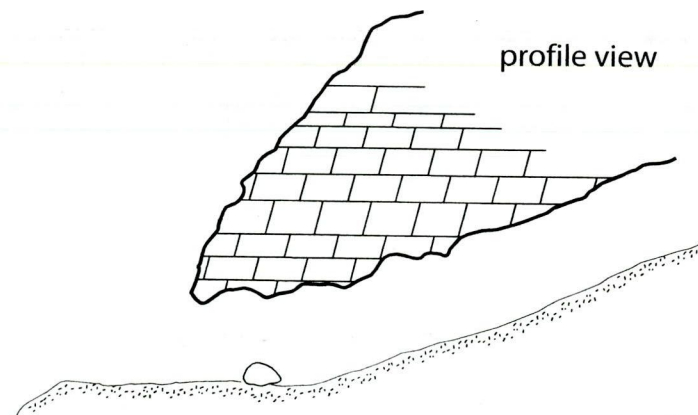
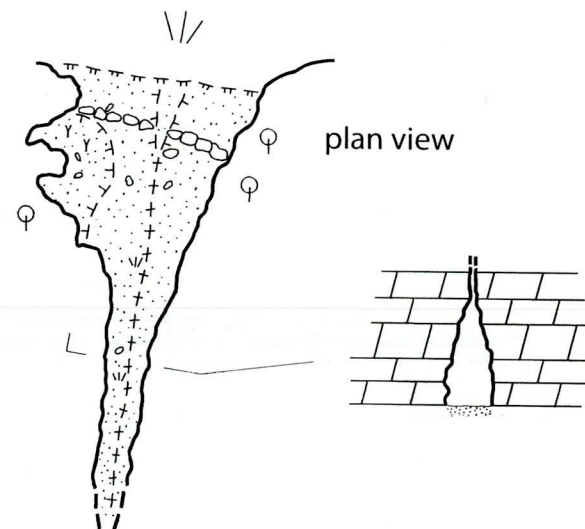


0 6
scale (feet)
scale (feet)

surveyed
2/22/03 by
Gary Engh
Ed Klausner

Meyer's Cave

Jones County, Iowa



total survey length = 15.5 feet (4.7 meters)



Klausner 2003

sinkhole entrance

Shock and Awe Cave

Clayton County, Iowa

surveyed
3/28/03 by
Chris Beck
Gary Engh
Ed Klausner

0 datum

profile view

-38

A —

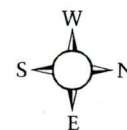
— A'

sinkhole
entrance

plan view

A

A'

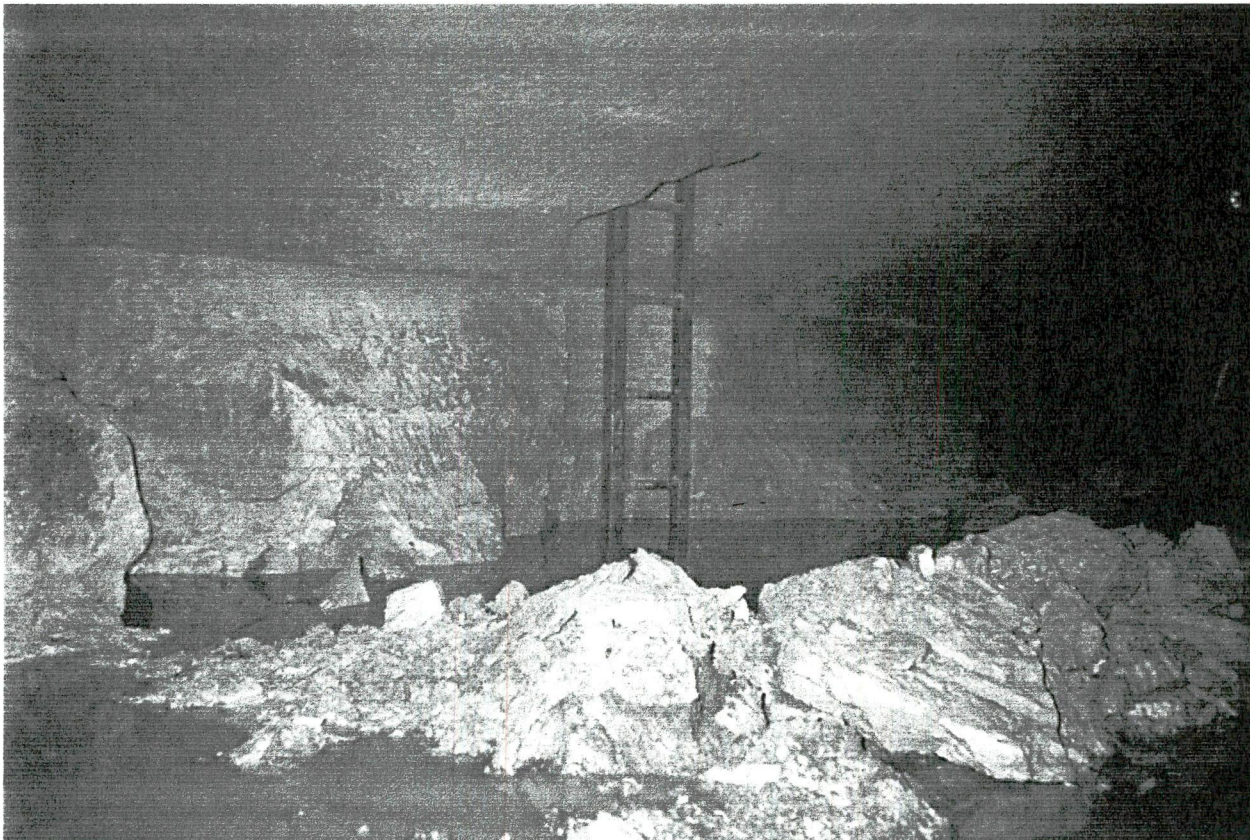


scale (feet)



Klausner 2003

total survey length 112.1 feet (34.2 meters)



Debris pile from new 2nd entrance shaft at Coldwater Cave.
Photo by: Dawn Ryan



Chris Beck working on cave gating project in Eastern Iowa.
Photo by: Ed Klausner