

The Grouper

Don't Forget!

- Leadership Award applications are now available online at <http://tiny.cc/leadawards>. Apply today!
- Student Organization Advisor training is now! Sign up online now at <http://goo.gl/bvkhb>.



Submissions from your organization must be received by 3pm on Thursday to be included in Monday's GROUPER.

Submissions may include calendar items, awards, or anything else newsworthy.

To submit an item for inclusion in the newspaper, simply go to: <http://tiny.cc/thegrouper> and complete the form.

Questions?

Contact Charlie Justice at justicec@mail.usf.edu or call 727-873-4118.

University of South Florida St. Petersburg

Oceanography Camp for Girls Car Wash

Come out support the Oceanography Camp for Girls Alumni as they host a car wash on Saturday November 20th from 10am until 2pm at the St. Petersburg Christian School - 2021 62nd Ave North St. Petersburg, FL, 33702. Help support the camp and the establishment of the Alumni Association. The Oceanography Camp for Girls is a free three week summer camp for girls completing the 8th grade at the College of Marine Science. Any questions, please contact Brittany Lyp at blyp@mail.usf.edu. Thank you!



Focus on Wellness

Is the smoke really clearing on campus?

With the Great American Smokeout on November 18th, there's no better time to quit

using tobacco products. Learn how students are succeeding in this great article and enter to Win \$1,000 at readsh101.com/stpt.html.

And don't forget to stop by and say hello to USFSP PEERS educators as they promote the Great American Smokeout on Nov 18th 10-12pm at Harborwalk Fountain.

Want to be an Orientation Team Leader?

Applications for 2011-2012 Orientation Leaders will be available starting November 1. You may pick up an application by attending one of the interest sessions that will be held. The interest session will provide details about the position the hiring process.

All sessions will be held in CAC 133. The remaining dates for all the interest sessions are:

Thursday, November 18 – 4:00 p.m.
Friday, January 14 – 2:00 p.m.
Wednesday, January 19 – 4:00 p.m.

Please contact Jennifer Quinn-Taylor (jqtaylor@mail.usf.edu) with any questions or visit <http://www.stpt.usf.edu/orientation/orientationleaderapplication.htm>.

MADD Festival of Trees & Wreaths

We invite you to join us for the Inaugural FESTIVAL of TREES & WREATHS to kick off the Pinellas' Walk Like MADD 5K.

We are looking forward to displaying your talents at this year's Festival on Dec 2, 2010 from 6-8pm at the St Pete Beach Community Center. 7701 Boca Ciega Drive.

How it works: Your group sponsors a tree for \$50, wreath for \$25 OR sponsors the

decoration of the tree/wreath. The cost to decorate is up to your creative team as they will be the ones decorating the tree on December 2 from 10-4pm at the St. Pete Beach Community Center.

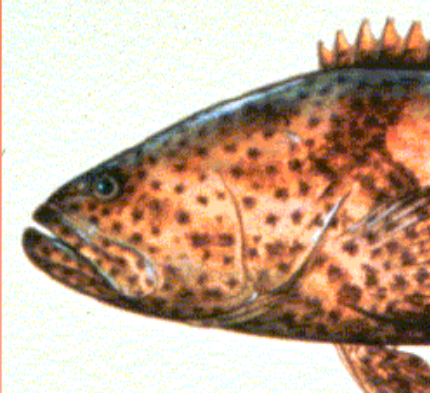
The magic begins when we open the doors to the community on December 2 from 6-8pm for everyone to participate in a silent auction for the trees!

The high bidder will take their tree/wreath that evening or the tree/wreath can remain on display on December 3rd for the St. Pete Beach Recreation's Tween Night, where local tweens and their families will participate in the People's Choice Award as they vote for their favorite tree.

Contact me for more info on how you can participate!
813-935-2676 ext 5
amber.saltzman@madd.org.



The Grouper



This week's catch....

Week of November 15th

Tuesday, November 16, 2010 from 6:00 pm to 10:00 pm at Campus Activities Center (CAC), room 133

USFSP Black Student Association: What Did She Say?

The USFSP Black Student Association Hosts An Open Panel Forum Where A Panel of Women From All Walks Of Life Are Placed Before An Audience To Answer All Those Questions That Men Have Wished To Ask Women!!!

Wednesday, November 17, 2010 from 9:00 am to 3:00 pm at Campus Activities Center (CAC)

GIS Day 2010 Activities

GIS Day is a global event for thousands of users of GIS technology to educate the public and demonstrate GIS technology at schools and organizations around the world. Students will be challenged by interactive GIS activities including a GPS Treasure Hunt, a Google Earth Search and an activity to track hurricanes in the Atlantic Ocean through the use of Arc Explorer. See more at <http://www.stpt.usf.edu/gisday/>. We will have presentations, demonstrations and fun, interactive activities for all. This year we will have 300 students from K-12. This popular educational celebration is led by Barnali Dixon, associate professor of environmental science, policy and geography, and her lab, the Geo-Spatial Analytics Lab (G-SAL).

Wednesday, November 17, 2010 from 10:00 am to 5:00 pm at Career Center

Career Center Open House

Come meet the new staff—Learn your Holland Code—Door prize drawings—Refreshments & snacks available—Open to all USF students, faculty & staff!

Thursday, November 18, 2010 from 12:00 pm to 1:30 pm at Campus Activities Center (CAC)

7th Annual Multicultural Feast

Faculty, staff, and students are invited to prepare a dish of cultural significance for the annual potluck feast and participate in our annual drum circle!! Join us in the Core located in the Campus Activities Center!

For an application to submit your recipe, please contact La-Tarri Canty at canty1@mail.usf.edu.

Friday-Sunday, November 19-21, 2010 at DaySpring Conference Center

Fall Leadership Retreat—CALL 727-873-4118— REGISTER TODAY

To register to attend or for more information, visit our website at <http://tiny.cc/LeadershipRetreat>.