

1-1-1961

## Juvenile Welfare Board Annual Report : 1960 - 1961

Juvenile Welfare Board of Pinellas County.

Follow this and additional works at: [https://scholarcommons.usf.edu/jwb\\_reports](https://scholarcommons.usf.edu/jwb_reports)

---

### Scholar Commons Citation

Juvenile Welfare Board of Pinellas County., "Juvenile Welfare Board Annual Report : 1960 - 1961" (1961).  
*Juvenile Welfare Board (JWB) of Pinellas County Reports/Publications*. 27.  
[https://scholarcommons.usf.edu/jwb\\_reports/27](https://scholarcommons.usf.edu/jwb_reports/27)

This Other is brought to you for free and open access by the Juvenile Welfare Board of Pinellas County at Scholar Commons. It has been accepted for inclusion in Juvenile Welfare Board (JWB) of Pinellas County Reports/Publications by an authorized administrator of Scholar Commons. For more information, please contact [scholarcommons@usf.edu](mailto:scholarcommons@usf.edu).

Juvenile Welfare Board

207 County Building  
St. Petersburg, Florida

J

W

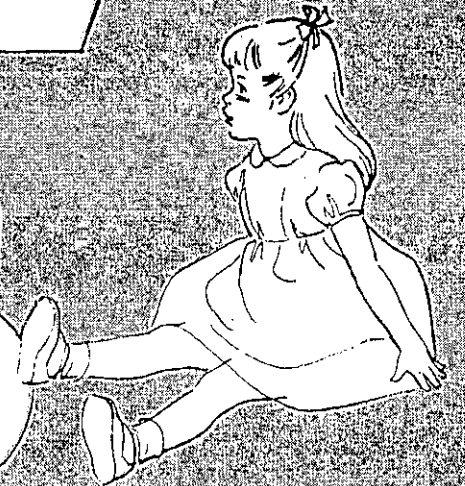
B

*1 M - Annual  
Booklets - \$152.00*

*front covers  
have metal*

*14th  
annual  
report*

*Oct. 1, 1960 - Sept. 30, 1961*



JUVENILE WELFARE BOARD  
PINELLAS COUNTY, FLORIDA

# BOARD

Rev. Mr. Robert E. Coleman, Jr., *Clearwater*  
*Chairman*

Mrs. Baya Harrison, *St. Petersburg*  
*Secretary*

A. L. Anderson, *St. Petersburg*  
*Vice-Chairman, Board of County Commissioners\**

Floyd T. Christian, *St. Petersburg*  
*Superintendent of Public Instruction\**

Charles O. Parks, Jr., *St. Petersburg*  
*Judge of the Juvenile Court\**

Mrs. H. W. Holland, *St. Petersburg*  
Mrs. Gus Sakkis, *Tarpon Springs*

# STAFF

George H. Finck, ACSW, Ph.D., *Director*

Nenabelle G. Dame, ACSW, *Marriage and Family Counselor*

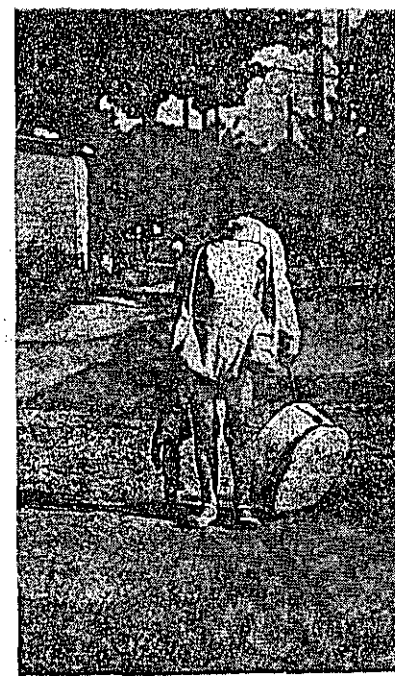
Beatrice Simcox Reiner, ACSW, *Marriage and Family Counselor*

Brady O. Smith, ACSW, *Marriage and Family Counselor*

Ethel G. Callahan, *Secretary*

Katherine J. Jones, *Administrative Secretary*

\*These members are stipulated in the Juvenile Welfare Board Act.  
Other members are appointed by the Governor.



## Foster Care

This little child needs a new home, a substitute family, and foster parents who can give her tender, loving care. And an understanding social worker will counsel with her and if possible help her own parents to work out plans for a permanent and secure home.

Child neglect and dependency are the main contributors to delinquency and mental illness. Foster care is the primary *preventive service* for our children.

Every child needs the experience of living in a normally functioning family where he receives affection, knows he is wanted, learns how to get along with others, and where he can find happiness. Through this experience he can acquire the capacity to create his own home and to develop sound family patterns.



## Child Guidance Clinic Of Pinellas County, Inc.

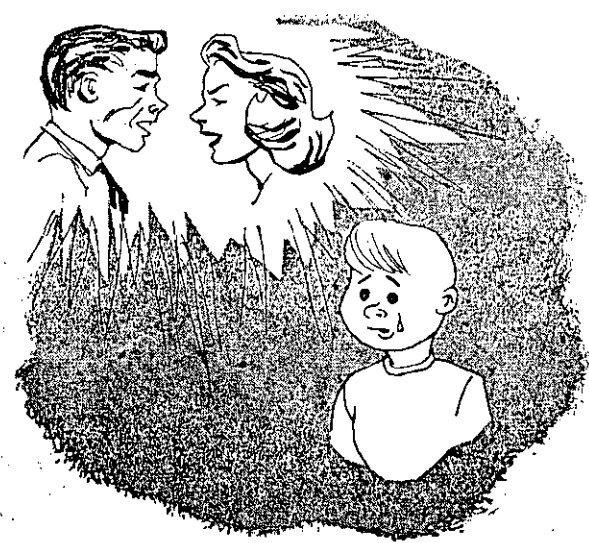
The goal of the Child Guidance Clinic of Pinellas County is to help those children in our community who are confused, anxious and fearful to feel more secure, accepted, and happy.

The Clinic program is two-fold: direct service to patients and mental health education for the general public.

Clinical services include diagnosis of the child's problems using a variety of psychological techniques, and counseling with the parents individually or in groups.

When indicated, the child is also seen for play therapy alone or along with other children, depending on his needs.

Mental health education is carried on by different members of the staff who meet with various lay and professional groups to discuss the many problems of growing youngsters. We find that alert parents are always seeking to learn more about their children.



## Marriage And Family Counseling

Marital conflicts and family breakdowns are causally related to children's emotional disturbances and delinquency. To *prevent* divorce and destructive dissension, the Juvenile Welfare Board operates a marriage and family counseling service for all residents of the county in behalf of their children.

Marriage and family counseling helps people to gain understanding of themselves and their mates, their behavior, attitudes, and feelings. Through these increased understandings, parents can then more successfully cope with bringing up their children.

A broken home is directly and indirectly a great expense to the community. Marriage and family counseling can *prevent* this cost and help our children to lead happier lives.



**Pinellas County License Board For  
Children's Centers**

**And Family Day Care Homes**

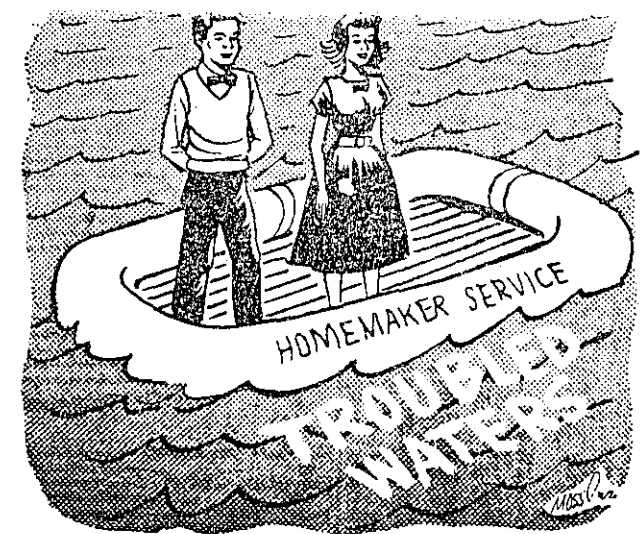
A new law enacted by the 1961 Florida Legislators continues to protect the health, safety and mental development of children cared for in Children's Centers and Family Day Care Homes throughout the county.

The law which repealed 1957 day care legislation —

- establishes a seven member License Board;
- outlines minimum standards for all day nurseries, nursery schools, kindergartens, and family day care homes;
- requires a license for every children's center and family day care home;
- provides a penalty for the illegal operation of such facilities.

Funds to finance the operation of the License Board, its office and staff are budgeted by the Juvenile Welfare Board with the consent of the Board of County Commissioners.

More than 3,500 children of pre-school age are cared for in the 72 children's centers and the 150 family day care homes currently holding licenses.



**Homemaker Service**

A homemaker is a mature, specially trained, substitute mother who is employed to help maintain and preserve family life that is threatened with destruction by illness, death, ignorance, social maladjustment, or other problems. She assumes full or partial responsibility for family management and child care during the mother's absence or disability.

Homemaker service prevents family break-up and enables the children to continue living together in their accustomed surroundings. Fathers can continue to work and to support, sometimes paying all or part of the cost of the homemaker's services.

The Board believes this vital service should be available to all citizens and not be limited to an emergency service for families with children. For this reason the Board has asked the Community Welfare Council to study the feasibility of a homemaker service for all age groups.

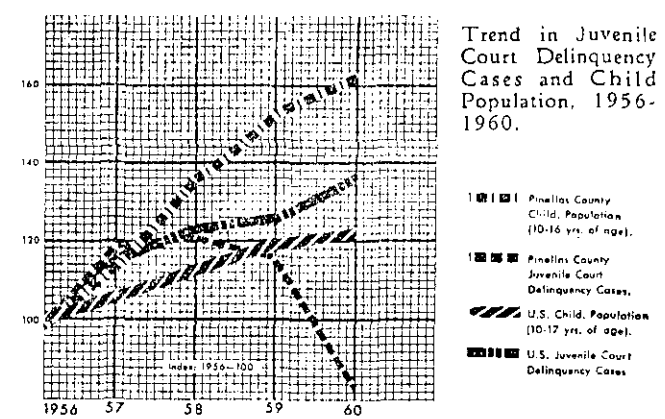


## Clearing House For Information

Services to children operate most effectively when agencies and organizations cooperate with one another. To promote cooperation and to prevent duplication of services, the Board acts as a clearing house for information for all concerned with the welfare of children.

Cooperation and teamwork require regular and systematic consultation and planning. No agency or organization can be an island, separate from all others. To build bridges of understanding and good communication between groups is a task to which the Board is dedicated, both by law and by philosophy.

Consultation services to the Pinellas County Schools are of primary importance because of their strategic position in the discovery and early treatment of children's behavior problems. We continue to support the schools in the development of educational services and special education, as well as in their community relations.



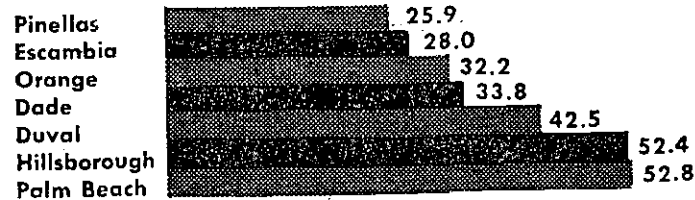
## Six Ounces Of Prevention

Six ounces of *prevention* — the foregoing services operated, provided for, or maintained by the Juvenile Welfare Board — are worth more than six pounds of cure. From 1956, when we began to have statistics comparable with national and state figures, through 1960, the number of juvenile delinquency court cases in Pinellas County *declined* 14.4 per cent. This decline took place in spite of a 61 per cent increase in our school population, ages 10 to 17.

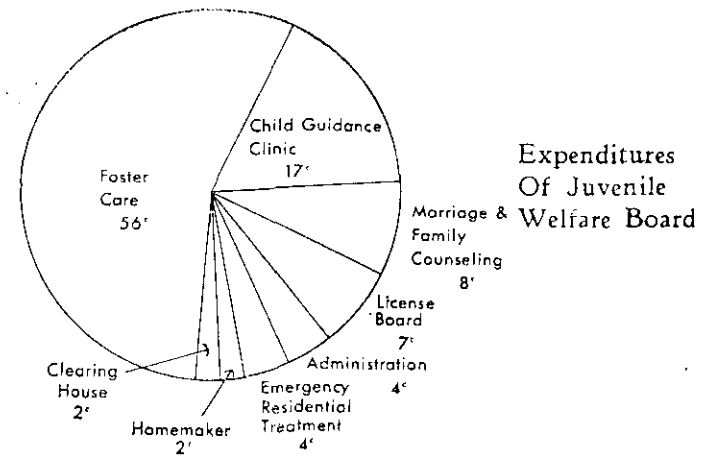
The 1960 Census affords an opportunity to draw analogies with other counties in Florida which are comparable to us in size. The juvenile delinquency rate in Pinellas County is less than two-thirds of the average for these six counties.

Here is dramatic demonstration of the effectiveness of our six ounces of *prevention*, the services to children of the Juvenile Welfare Board working in cooperation with our schools, churches, recreation and leisure time organizations, our public and private social and health agencies, our police services to juveniles, and our Juvenile Court counseling services with repeaters. We draw particular notice to our school social work, guidance, and psychological services; to our Police Athletic League of the St. Petersburg Police; and to our Junior Deputy program of the Pinellas Sheriff's Department.

But the major credit for this record belongs to the citizens and voters of Pinellas County who, through their duly elected representatives in the County Commission and Legislative Delegation, insured that the six ounces of *prevention* should continue. When Juvenile Welfare Board funds for foster care were exhausted by an unprecedented increase in need, the Board of County Commissioners guaranteed the additional sum of \$27,000 and supported the Board's request for increasing the tax from one-third to one-half mill. The Legislative Delegation unanimously approved this change which became law in June, 1961. With this increase of 50 per cent in available funds, the Juvenile Welfare Board expects to be able to keep pace with our rapidly growing child population which is equal to the entire population of the County in 1940.



Rate per 1000 Child Population of Delinquency Cases Disposed of by Florida Juvenile Courts, 1960



DURING THE YEAR 1960-61  
YOUR JUVENILE WELFARE BOARD

1. Provided for the foster care of 391 dependent children — 76,607 days at a net average of \$1.93 per day ----- \$143,856.00
2. Provided for and helped to maintain the Child Guidance Clinic of Pinellas County by paying for staff salaries and services — 453 children along with one or both parents. --- 43,980.00
3. Operated a marriage and family counseling service for 551 individuals in 365 families with 765 children for a total of 3,219 consultations—also 57 group counseling sessions for 96 persons ----- 21,836.00
4. Paid salaries and office expenses for the Pinellas County License Board for Children's Centers and Family Day Care Homes—72 children's centers and 150 family day care homes with a total capacity of 3500 children ----- 17,719.00
5. On emergency basis, supplied the cost of care and rehabilitation for three children in a residential treatment center for emotionally disturbed children ----- 10,174.00
6. Prevented break-up of 20 families with 68 children through use of Homemaker Service ----- 4,516.00
7. Acted as a clearing house for information and as a coordinating agency for the better functioning of all child welfare services, including consultation services to the public schools ----- 4,343.00
8. General operation and administration ----- 11,152.00

SOURCE OF FUNDS

General Operating Account -----	\$257,382.00
Trustee Account -----	194.00
	<u>\$257,576.00</u>