

January 1959

Recollections for Piano Solo

Robert Helps

Follow this and additional works at: https://digitalcommons.usf.edu/robert_helps

Recommended Citation

Helps, Robert, "Recollections for Piano Solo" (1959). *Robert Helps Collection, 1928-2001*. 15.
https://digitalcommons.usf.edu/robert_helps/15

This Book is brought to you for free and open access by the Arts and Humanities at Digital Commons @ University of South Florida. It has been accepted for inclusion in Robert Helps Collection, 1928-2001 by an authorized administrator of Digital Commons @ University of South Florida. For more information, please contact digitalcommons@usf.edu.

RECOLLECTIONS

FOR

PIANO SOLO

ROBERT HELPS

August 1959

LENTO

IV MEMORIAM

For: Melvin Leipzig and
Ronald Markman

Handwritten musical notation for the first system. The top staff is a treble clef with a 2/4 time signature and a *pp* dynamic marking. The bottom staff is a bass clef with a *ppp* dynamic marking and a *ped.* (pedal) marking. The music consists of a series of chords and single notes, with a dashed line indicating a pedal point.

Handwritten musical notation for the second system. The top staff is a treble clef with a *mp* dynamic marking and a *pp* dynamic marking. The bottom staff is a bass clef with a *p* dynamic marking and a *dim.* (diminuendo) marking. The music includes a boxed number 10 and a dashed line indicating a pedal point.

Handwritten musical notation for the third system. The top staff is a treble clef with a *pp* dynamic marking and a *ppp* dynamic marking. The bottom staff is a bass clef with a *ppp* dynamic marking and a *ped.* (pedal) marking. The music includes a *Rit.* (Ritardando) marking and a dashed line indicating a pedal point.

Handwritten musical notation for the fourth system. The top staff is a treble clef with a *p* dynamic marking and a *cresc.* (crescendo) marking. The bottom staff is a bass clef with a *mf* dynamic marking and a boxed number 20. The music includes a *a tempo* marking and a dashed line indicating a pedal point.

Handwritten musical notation for the fifth system. The top staff is a treble clef with a *f* dynamic marking and a *p* dynamic marking. The bottom staff is a bass clef with a *p* dynamic marking. The music includes a *f* dynamic marking and a dashed line indicating a pedal point.

Handwritten musical score system 1. The top staff contains a melodic line with a slur and a *dim.* (diminuendo) marking. The bottom staff contains a bass line with a box containing the number 30. The key signature has one flat (B-flat).

Handwritten musical score system 2. The top staff has a *Rit.* (Ritardando) marking and a *poco animando* marking. The bottom staff has a box containing the number 40 and a *ped.* (pedal) marking. The key signature has one flat (B-flat).

Handwritten musical score system 3. The top staff has a *Rit.* (Ritardando) marking and an *a tempo* marking. The bottom staff has a box containing the number 50 and dynamic markings *f*, *mf*, *p*, *fp*, *mp*, and *pp*. The key signature has one flat (B-flat).

Handwritten musical score system 4. The top staff has a *Rit.* (Ritardando) marking. The bottom staff has a box containing the number 50 and dynamic markings *pp*, *p*, *mp*, and *pp*. The key signature has one flat (B-flat).

Handwritten musical score system 5. The top staff has an *a tempo* marking. The bottom staff has a box containing the number 60 and dynamic markings *pp* and *mp*. The key signature has one flat (B-flat).

Handwritten musical notation on a grand staff. The upper staff features a triplet of eighth notes in the first measure, followed by a series of eighth and sixteenth notes. The lower staff contains a melodic line with a 'ppp cresc.' marking. A fermata is placed over the final note of the upper staff.

Handwritten musical notation on a grand staff. The upper staff has a half note with a flat and a fermata, followed by a melodic line with a 'ppp' marking and a boxed '70'. The lower staff contains a complex chordal texture with a 'mp' marking.

Handwritten musical notation on a grand staff. The upper staff includes a triplet of eighth notes marked '3/4' and 'p', followed by a melodic line with a '2/4 pp' marking and a 'ppp' marking. The lower staff contains a complex chordal texture.

Handwritten musical notation on a grand staff. The upper staff has a half note with a fermata, followed by a melodic line with a boxed '80'. The lower staff contains a complex chordal texture with a 'pda' marking and a dashed line.

Empty grand staves at the bottom of the page.

Andante con moto (circa $\text{♩} = 80$)

INTERLUDE

For - John David and David Douglas

Handwritten musical score for the first system. The top staff is in treble clef with a key signature of one sharp (F#) and a common time signature (C). The bottom staff is in bass clef with a key signature of one flat (Bb). The tempo is marked "Andante con moto (circa $\text{♩} = 80$)". The section is titled "INTERLUDE". The music is for two voices, John David and David Douglas. The first system includes a dynamic marking of *pp* and a pedal instruction "ped. ---".

Handwritten musical score for the second system. The top staff is in treble clef with a key signature of one sharp (F#) and a common time signature (C). The bottom staff is in bass clef with a key signature of one flat (Bb). The music is for two voices, John David and David Douglas. The second system includes a dynamic marking of *p*.

Handwritten musical score for the third system. The top staff is in treble clef with a key signature of one sharp (F#) and a common time signature (C). The bottom staff is in bass clef with a key signature of one flat (Bb). The music is for two voices, John David and David Douglas. The third system includes a dynamic marking of *ppp* and a pedal instruction "ped. ---".

Handwritten musical score for the fourth system. The top staff is in treble clef with a key signature of one flat (Bb) and a common time signature (C). The bottom staff is in bass clef with a key signature of one flat (Bb). The music is for two voices, John David and David Douglas. The fourth system includes a dynamic marking of *p* and a boxed number "10".

Handwritten musical score for the fifth system. The top staff is in treble clef with a key signature of one flat (Bb) and a common time signature (C). The bottom staff is in bass clef with a key signature of one flat (Bb). The music is for two voices, John David and David Douglas. The fifth system includes a dynamic marking of *cresc.* and a pedal instruction "ped. ---".

Handwritten musical score, first system. The top staff contains a melodic line with a 7-measure rest, a 5-measure rest, and a 7-measure rest. The bottom staff contains a piano accompaniment. Dynamics include *mp*, *p*, and *cresc.*. A *con ped.* marking is present. A 3/8 time signature is indicated.

Handwritten musical score, second system. The top staff contains a melodic line with a 7-measure rest, a 7-measure rest, and a 7-measure rest. The bottom staff contains a piano accompaniment. Dynamics include *p* and *cresc.*. A boxed number 20 is present.

Handwritten musical score, third system. The top staff contains a melodic line with a 7-measure rest, a 7-measure rest, and a 7-measure rest. The bottom staff contains a piano accompaniment. Dynamics include *dim.*. A 3/8 time signature is indicated.

Handwritten musical score, fourth system. The top staff contains a melodic line with a 7-measure rest, a 7-measure rest, and a 7-measure rest. The bottom staff contains a piano accompaniment. Dynamics include *pp*. A 3/4 time signature is indicated. A *ped. ---* marking is present.

Handwritten musical score, fifth system. The top staff contains a melodic line with a 7-measure rest, a 7-measure rest, and a 7-measure rest. The bottom staff contains a piano accompaniment. Dynamics include *ppp*. A 3/4 time signature is indicated. A boxed number 30 is present.

Poco Meno Mosso

Handwritten musical score for the first system. The piano staff (bottom) features a triplet of eighth notes, a dynamic marking of *f*, and a pedal point marked "ped." with a dashed line. The treble staff (top) includes a triplet of eighth notes, a dynamic marking of *f*, and a "piu f" marking. The system concludes with a double bar line.

Handwritten musical score for the second system. The piano staff (bottom) includes a triplet of eighth notes, a dynamic marking of *f*, and a "cresc." marking. The treble staff (top) includes a triplet of eighth notes, a dynamic marking of *f*, and a "cresc." marking. The system concludes with a double bar line.

Handwritten musical score for the third system. The piano staff (bottom) includes a triplet of eighth notes, a dynamic marking of *ff*, and a "ped." marking. The treble staff (top) includes a triplet of eighth notes, a dynamic marking of *ff*, and a "ped." marking. The system concludes with a double bar line.

Handwritten musical score for the fourth system. The piano staff (bottom) includes a triplet of eighth notes, a dynamic marking of *pp*, and a "ped." marking. The treble staff (top) includes a triplet of eighth notes, a dynamic marking of *ff*, and a "Meno Mosso" marking. The system concludes with a double bar line.

Handwritten musical score for the fifth system. The piano staff (bottom) includes a triplet of eighth notes, a dynamic marking of *p*, and a "Poco a poco cresc." marking. The treble staff (top) includes a triplet of eighth notes, a dynamic marking of *p*, and a "con ped." marking. The system concludes with a double bar line.

Handwritten musical score system 1. The system consists of two staves. The upper staff is in treble clef with a key signature of one sharp (F#) and a 4/4 time signature. It contains several measures with notes, rests, and dynamic markings like '7' and '7-8'. The lower staff is in bass clef and contains a continuous sequence of eighth notes.

Handwritten musical score system 2. The system consists of two staves. The upper staff has a treble clef, one sharp key signature, and a 4/4 time signature. It includes a measure with a circled '50'. The lower staff is in bass clef and continues the eighth-note sequence.

Handwritten musical score system 3. The system consists of two staves. The upper staff has a treble clef, one sharp key signature, and a 4/4 time signature. It includes a measure with a circled '50'. The lower staff is in bass clef and continues the eighth-note sequence.

Handwritten musical score system 4. The system consists of two staves. The upper staff has a treble clef, one sharp key signature, and a 4/4 time signature. It includes a measure with a circled '50'. The lower staff is in bass clef and continues the eighth-note sequence.

Handwritten musical score system 5. The system consists of two staves. The upper staff has a treble clef, one sharp key signature, and a 4/4 time signature. It includes a measure with a circled '50'. The lower staff is in bass clef and continues the eighth-note sequence.

8 - - - - -

f

8 - - - - - 7 -

70

Rit Tempo I

2/4 PPP
con ped.

80

mf

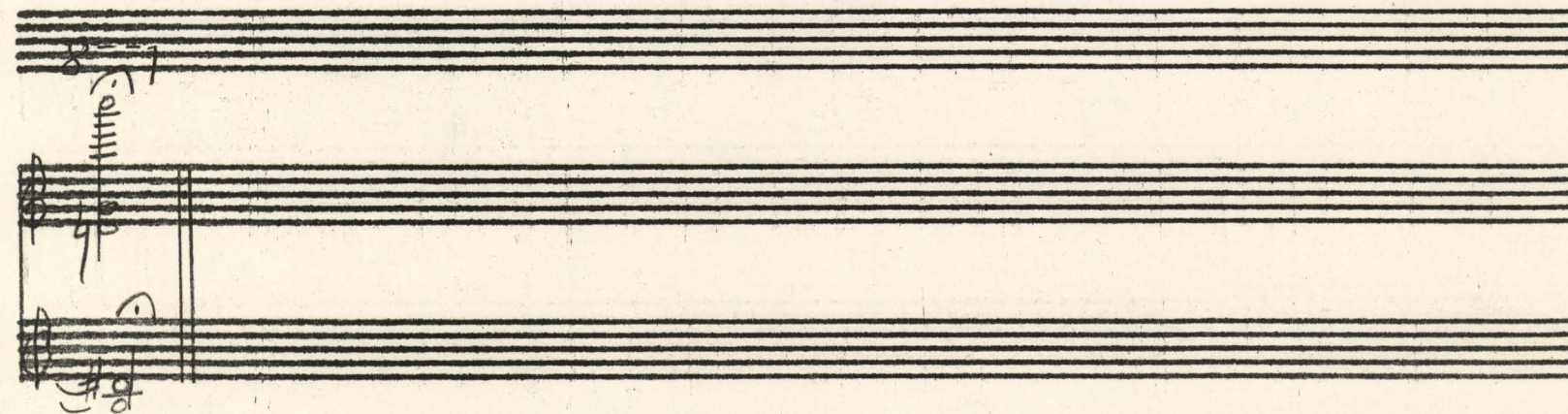
Handwritten musical notation for the first system, measures 1-4. The top staff features a melodic line with a flat key signature and a common time signature. The bottom staff contains a bass line with eighth and sixteenth notes. A slur is placed over the first two measures of the top staff.

Handwritten musical notation for the second system, measures 5-8. The top staff continues the melodic line. The bottom staff features a bass line with a forte dynamic marking 'f' in measure 6. A slur is placed over the first two measures of the top staff.

Handwritten musical notation for the third system, measures 9-12. The top staff continues the melodic line. The bottom staff features a bass line with a 'molto dim.' (molto diminuendo) marking in measure 9 and a piano dynamic marking 'p' in measure 11. A slur is placed over the first two measures of the top staff.

Handwritten musical notation for the fourth system, measures 13-16. The top staff continues the melodic line. The bottom staff features a bass line with a tempo marking '90' in a box in measure 13. A slur is placed over the first two measures of the top staff.

Handwritten musical notation for the fifth system, measures 17-20. The top staff continues the melodic line. The bottom staff features a bass line with a key signature change to one sharp (F#) in measure 17. A slur is placed over the first two measures of the top staff.



EPILOGUE

For Olga Goitein

-11-

Lento

2/4 pp

mp

ppp

ped.-----

ped.-----

f

10

11

mp

ped.-----

3

p

ped.-----

ped.-----

Rit.----- a tempo

20

ped.-----

ped.-----

30

ped.-----

-12-

ped.-----ped.-----

ped.-----ped.-----

Rit.

40

piu f

ff

ped.-----ped.-----

And Meno Mosso

f

ped.-----

3/4

ped.-----

-13-

ped. ---

Molto rit. ---

[50]

ff

fff molto dim. (pp)

Meno Mosso

8 ---

Tempo I

mp

pp

pp

ppp

con ped.

Rit.

8 ---

[60]

pp

7

8

Tempo I

2 # 4 pp

mf

mp cresc.

f

ped. ---

Handwritten musical score system 1. It features a treble and bass staff. The treble staff has a melodic line with a slur and a fermata. The bass staff has a rhythmic line with eighth notes. Dynamics include *mp* and *p*. A tempo marking *70* is present. A right-hand part is indicated by "RH" and a fermata.

Handwritten musical score system 2. It features a treble and bass staff. The treble staff has a melodic line with a slur and a fermata. The bass staff has a rhythmic line with eighth notes. Dynamics include *mp* and *p*. A tempo marking *70* is present.

Handwritten musical score system 3. It features a treble and bass staff. The treble staff has a melodic line with a slur and a fermata. The bass staff has a rhythmic line with eighth notes. Dynamics include *mp* and *p*. A tempo marking *70* is present. A right-hand part is indicated by "RH" and a fermata.

Handwritten musical score system 4. It features a treble and bass staff. The treble staff has a melodic line with a slur and a fermata. The bass staff has a rhythmic line with eighth notes. Dynamics include *mp* and *p*. A tempo marking *70* is present. A right-hand part is indicated by "RH" and a fermata.

Handwritten musical score system 5. It features a treble and bass staff. The treble staff has a melodic line with a slur and a fermata. The bass staff has a rhythmic line with eighth notes. Dynamics include *mp* and *p*. A tempo marking *70* is present. A right-hand part is indicated by "RH" and a fermata.

Handwritten musical notation on a grand staff. The notation includes various notes, rests, and dynamic markings such as *ppp*, *pp*, and *fp*. Above the staff, there are handwritten annotations including "8--1", "15-", and "8-7". Below the staff, there are handwritten notes including "ped." and "8--1".

Handwritten musical notation on a grand staff. The notation includes various notes, rests, and dynamic markings such as *ppp* and *p*. Above the staff, there are handwritten annotations including "8--1" and "7". Below the staff, there are handwritten notes including "ped." and "8--1".

Handwritten musical notation on a grand staff. The notation includes various notes, rests, and dynamic markings such as *ppp* and *pp*. Above the staff, there are handwritten annotations including "8--1" and "7". Below the staff, there are handwritten notes including "ped." and "8--1".

Empty grand staff lines.

Empty grand staff lines.

Empty grand staff lines.

Empty grand staff lines.

Empty grand staff lines.

Empty grand staff lines.