

1-1-2010

2010 Annual Report USF Sarasota-Manatee

USF

Follow this and additional works at: https://digitalcommons.usf.edu/usf_accountability_reports

Scholar Commons Citation

USF, "2010 Annual Report USF Sarasota-Manatee" (2010). *USF Accountability Reports*. 7.
https://digitalcommons.usf.edu/usf_accountability_reports/7

This Article is brought to you for free and open access by the USF Archives at Digital Commons @ University of South Florida. It has been accepted for inclusion in USF Accountability Reports by an authorized administrator of Digital Commons @ University of South Florida. For more information, please contact digitalcommons@usf.edu.

University of South Florida, Sarasota-Manatee

Approved by the USF System BOT, December 16th, 2010

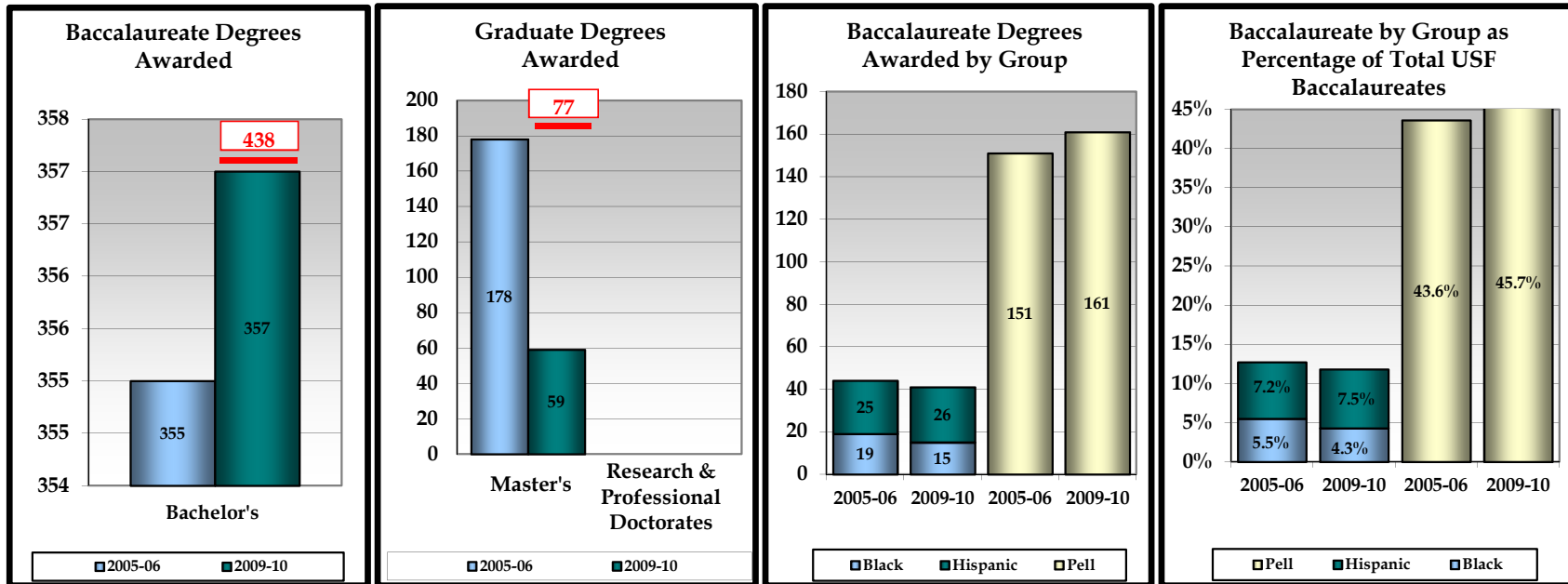
University of South Florida 2010 Annual Report

USF Sarasota-Manatee

Enrollments	#	%	Degree Programs Offered (As of Spr. 10)			Carnegie Classification	
TOTAL (Fall 2009)	1,784	100%	TOTAL		30	SEPARATE CLASSIFICATION PENDING	
Black	110	6%	Baccalaureate		23		
Hispanic	152	9%	Master's & Specialist's		7		
White	1,408	79%	Research Doctorate		0		
Other	114	6%	Professional Doctorate		0		
Full-Time	693	39%	Faculty (Fall 2009)	Full-Time	Part-Time		
Part-Time	1,091	61%		Size and Setting:			
Undergraduate	1,414	79%	TOTAL		52		Basic:
Graduate	203	11%	Tenure/T. Track		31		Elective Classification:
Unclassified	167	9%	Other Faculty/Instr.		21		

BOARD OF GOVERNORS - STATE UNIVERSITY SYSTEM GOAL 1:

ACCESS TO AND PRODUCTION OF DEGREES (with 2010 University Work Plan "Targets" in Red)



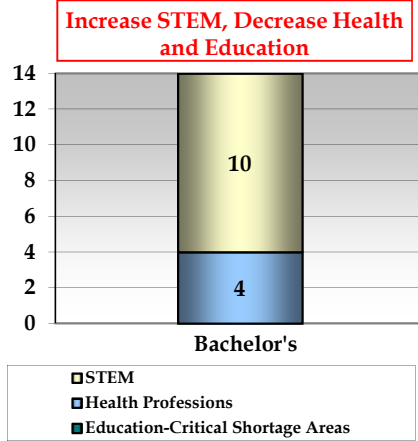
2012 - 2013 Projected Institutional Contributions in RED PRINT.

BOARD OF GOVERNORS - STATE UNIVERSITY SYSTEM GOAL 2:

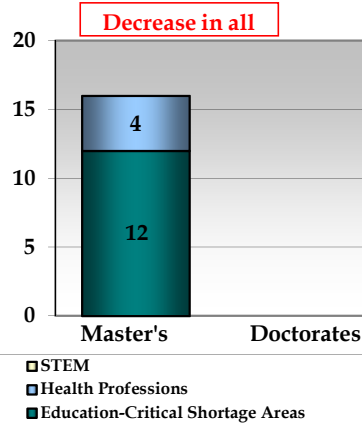
MEETING STATEWIDE PROFESSIONAL AND WORKFORCE NEEDS (with 2010 University Work Plan "Targets" in Red)

USF Sarasota-Manatee

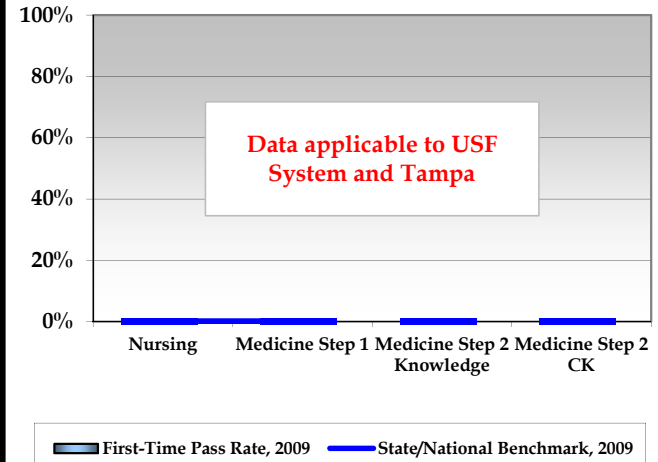
Baccalaureate Degrees Awarded in Select Areas of Strategic Emphasis, 2009-10



Graduate Degrees Awarded in Select Areas of Strategic Emphasis, 2009-10



Licensure Pass Rates

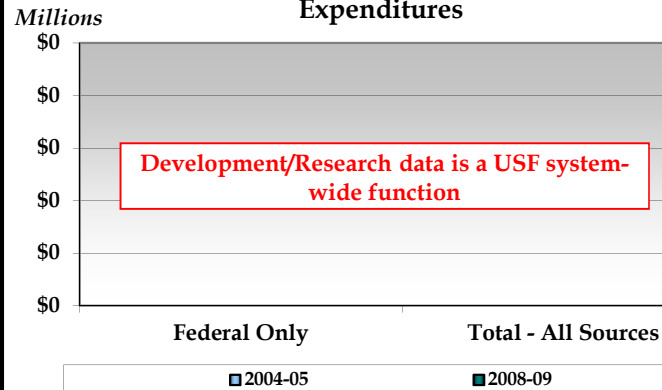


BOARD OF GOVERNORS - STATE UNIVERSITY SYSTEM GOAL 3:
BUILDING WORLD-CLASS ACADEMIC PROGRAMS AND RESEARCH CAPACITY

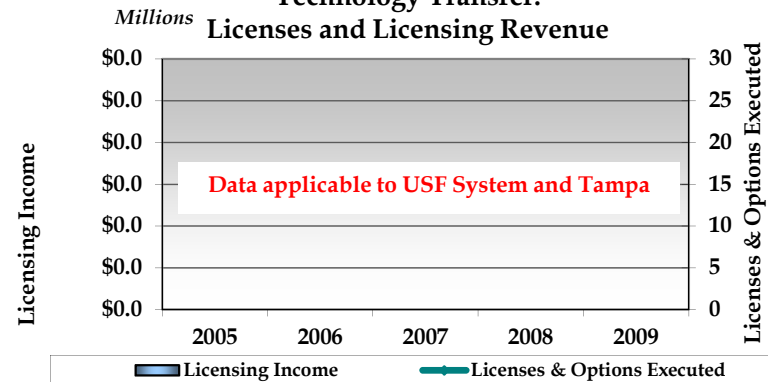
(2010 University Work Plan "Targets" in Red)

USF Sarasota-Manatee

Academic Research and Development Expenditures



University Innovations Generating Revenue Through Technology Transfer: Licenses and Licensing Revenue

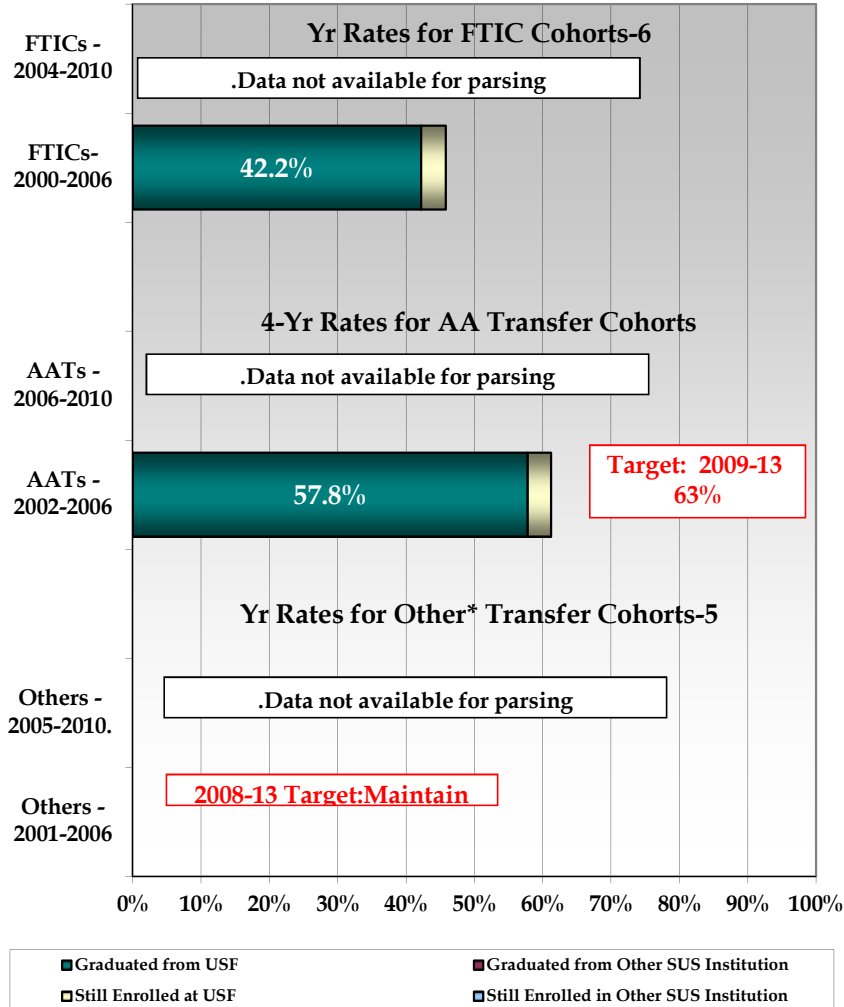


Projected Institutional Contributions in RED PRINT

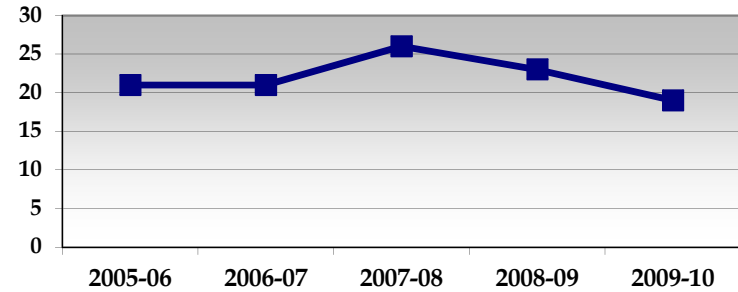
(2012 - 2013 for TOTAL Degrees in Areas of Strategic Emphasis; 2012 for NCLEX; 2011 - 2012 for R&D, Licences, and Licensing Revenue).

USF Sarasota-Manatee

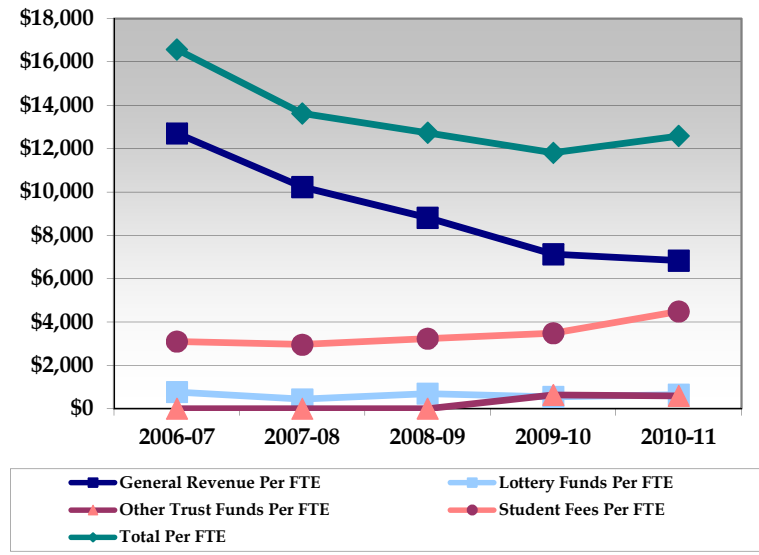
Undergraduate Retention and Graduation Rates



Student-to-Faculty Ratio



Funding Per Student FTE**



* The composition of "Other Transfer" cohorts may vary greatly by institution and by year.

** FTE for this metric uses the standard IPEDS definition of FTE, equal to 30 credit hours for undergraduates and 24 for graduates.

Graduation Rate from SAME Institution - Projected Institutional Contributions in RED PRINT.

Key University Achievements

Note: Limit to one-page. Enter a maximum of three issues per category. Only use 11-point Book Antiqua font.

► Student awards/achievements

1. 2010 Florida Achievement Award presented to a USFSM College of Education senior student for her outstanding contributions and services to the community.

► Faculty awards/achievements

1. USFSM professor Dr. J. Unnever given the Nationally Prestigious Donal A. J. MacNamara Award for outstanding publication from Academy of Criminal Justice Sciences.

► Program awards/achievements

1. School of Hotel and Restaurant Management is working to build 3 +1 programs with 6 (six) different international universities.
2. USFSM College of Education sponsored the 2010 Children's Literature Symposium – a joint conference with West Central Region F.A.T.E.

► Research awards/achievements

1. A College of Arts & Sciences professor received a \$131,566 sub-contract from SCOPE to conduct research

for The Aging with Dignity and Independence Initiative.

2. The article published by two College of Education professors in the *Journal of Intergenerational Relationships (JIR)*: "Lessons from Erikson: A look at autonomy across lifespan" has been cited more than any other in the journal. (202 times)
3. A College of Education professor was awarded as a Co-PI a grant from the Social Science Research and Humanities Council of Canada to research children affected by war in northern Uganda. She will be traveling to Uganda in November.

► Institutional awards/achievements

1. Fall 2010, USFSM opened its new USFSM @ North Port instructional site. The facility allows USFSM to provide access to baccalaureate and master's programs to students living in south Sarasota County.
2. USF Sarasota-Manatee received a one-year, \$247,500 grant from the Health Resources and Services Administration (HRSA). Outcomes include a five-year strategic plan for delivery of health care degrees/certificates that meet workforce needs in Sarasota and Manatee Counties.
3. USF Sarasota-Manatee's College of Business received a two-year \$170,000 grant from the Gulf Coast Community Foundation of Venice to improve the quality and quantity of business courses to residents of south Sarasota County.

INTRODUCTION

University of South Florida, Sarasota-Manatee

Mission

The University of South Florida Sarasota-Manatee delivers quality education to upper-division baccalaureate and master's students in an active research environment. We support students in attaining their highest potential by nurturing leadership, critical thinking, and an appreciation for learning. We advance cultural, social, environmental, and economic well-being for all we serve.

Vision

HOMETOWN CAMPUS, GLOBAL IMPACT

The University of South Florida Sarasota-Manatee aspires to be a leader in higher education, delivering accessible academic programs and contributing significant research, while inspiring continuous improvement locally and globally.

Other Contextual Introductory Comments

In October 2010, USF Sarasota-Manatee submitted its Certification of Compliance for separate accreditation to the Southern Association of Colleges and Schools (SACS). The campus will be site visited by the accreditor in November 2010. With anticipated accreditation separate from the Tampa Campus in June 2011.

BOARD OF GOVERNORS - STATE UNIVERSITY

SYSTEM GOAL 1: ACCESS TO AND PRODUCTION OF DEGREES

USF Sarasota-Manatee Florida Community College transfers take an average of 2.23 years to graduate despite the fact that 65% of students are working at least part-time. USF Sarasota-Manatee also has a consistently high retention rate of over 72% each cohort year. The success of the campus' students in completing degrees can be attributed to the following: 1) small class sizes; 2) expanded daytime, evening, online, and blended course offerings; 3) advising efforts such as the Still To Register Campaign in which advisors track and follow-up with students to ensure their timely registration each semester; and 4) diligent course tracking and scheduling to ensure the courses that students need are offered each semester.

Until 2009-10, undergraduate degree production grew each year after the campus moved to its own site in 2006. The decline in 2009-10 in both graduate and undergraduate degrees resulted when USF Sarasota-Manatee recoded to Tampa any students in Tampa-only degree programs, in anticipation of separate SACS accreditation. When in the past, these students would have graduated from USF Sarasota-Manatee; instead they were counted in the USF Tampa figures.

In the future, when USF Sarasota-Manatee is awarded separate accreditation, the campus hopes to increase the number of degree programs it offers at both the undergraduate and graduate levels. Currently, the campus offers fifteen (15) baccalaureate degree programs and six (6) master's degree programs.

**BOARD OF GOVERNORS - STATE UNIVERSITY
SYSTEM GOAL 2: MEETING STATEWIDE
PROFESSIONAL AND WORKFORCE NEEDS**

USF Sarasota-Manatee has made tremendous strides in the past few years to further meet the needs of its community and the State of Florida. All twenty-one (21) degree programs offered at the campus are closely aligned with workforce needs of the area. For example our business degree programs help to educate those seeking employment in the ever-growing fields of accountancy, management, sales, and marketing. USF Sarasota-Manatee's College of Arts & Sciences produces graduates ready for work in any number of fields with their strong programs in English, Psychology, Criminology, History, and Information Technology. USF Sarasota-Manatee's own School of Hotel & Restaurant Management, closely aligned with the local tourism industry, is growing in bachelor's degree enrollments each year. The School is currently going through the approval process for a master's degree. Finally, the USF Sarasota-Manatee's College of Education, produces not simply teachers, but a workforce of highly qualified educators.

**BOARD OF GOVERNORS - STATE UNIVERSITY
SYSTEM GOAL 3: BUILDING WORLD-CLASS
ACADEMIC PROGRAMS AND RESEARCH CAPACITY**

USF Sarasota-Manatee faculty members are committed to conducting relevant research that will contribute to the public good. During the academic year 2009-10, USF Sarasota-Manatee faculty members applied for more than \$3.34 million dollars in grants and devoted between 5% and 50% of their workloads to research efforts. The following are but a few highlights of their efforts:

- A USF Sarasota-Manatee professor given the Nationally Prestigious Donal A. J. MacNamara Award for outstanding publication from Academy of Criminal Justice Sciences
- USFSM College of Education sponsored the 2010 Children's Literature Symposium - a joint conference with West Central Region F.A.T.E. with the theme of *Engaging a New Generation of Readers: The Value of Evolution of Story*. The symposium brought presentations from educators, scholars, actors, education consultants, critics, librarians and graduate students to address shifts and developments in literature and explore emerging genres.
- The article published by two College of Education professors in the *Journal of Intergenerational Relationships (JIR)*: "Lessons from Erikson: A look at autonomy across lifespan" has been cited more than any other in the journal. (202 times)

**BOARD OF GOVERNORS - STATE UNIVERSITY
SYSTEM GOAL 4: MEETING COMMUNITY NEEDS AND
FULFILLING UNIQUE INSTITUTIONAL
RESPONSIBILITIES**

USF Sarasota-Manatee is committed to serving the needs of Sarasota, Manatee, and DeSoto counties. Part of that commitment is the campus' mission to advance the "economic well-being" of our surrounding communities. The following recent efforts evidence this commitment:

- Fall 2010 marked the grand opening of the new USF Sarasota-Manatee @ North Port instructional site. The site, originally housed on the State College of Florida's Venice campus, moved into the newly renovated building to accommodate the ever steady increase of south county student enrollments. The site offers coursework towards degrees in criminology, psychology, interdisciplinary social sciences, general business administration, elementary education, and educational leadership.
- USF Sarasota-Manatee's College of Business received a two-year \$170,000 grant from the Gulf Coast Community Foundation of Venice to improve the quality and quantity of business courses to residents of south Sarasota County. The funds are being used to finance a business advisor/recruiter and faculty in management and marketing who are delivering course work at the North Port instructional site of USF Sarasota-Manatee.
- USF Sarasota-Manatee received a one-year, \$247,500 grant from the Health Resources and Services Administration (HRSA) entitled, "A Blueprint for Health Professions Education at USF Sarasota-Manatee." Outcomes include a five-year strategic plan for delivery of health care degrees/certificates that meet workforce needs in Sarasota and Manatee Counties.
- USF Sarasota-Manatee received a \$131,566 sub-contract from Sarasota County Openly Plans for Excellence (SCOPE) to conduct research for The Aging with Dignity and Independence Initiative, a multi-year project with an end goal of creating innovative and technological approaches to help people 65 years and older age with dignity and independence in the

community. The research will engage residents through community forums, focus groups and surveys, seeking to learn from the experiences of older adults as well as the broader community. The Aging with Dignity and Independence Initiative is funded by The Patterson Foundation.

- Twenty-two local professionals received a professional development certificate in Non-profit Management from USF Sarasota-Manatee this past spring. The program, developed by USFSM and The Community Foundation of Sarasota County, was a ten week course for potential and current nonprofit managers and leaders to prepare emerging professionals for the unique challenges in today's nonprofit climate.
- USFSM's annual Brunch on the Bay has raised over \$2.7 million dollars since 1994 to support endowed and First Generation student scholarships.

PROGRESS ON PRIMARY INSTITUTIONAL GOALS AND METRICS AS OUTLINED IN THE UNIVERSITY WORK PLAN

USF Sarasota-Manatee Strategic Goals

- 1. Learner-Centered Environment: Be a diverse, collaborative, and intellectually challenging campus with high quality academic programs and support services for students, faculty, staff, and community.**

With strategic focus on teaching and learning, research, programming, campus climate, and community USF Sarasota-Manatee has met and seeks to exceed its objectives for this goal.

- Presently, 75% of USF Sarasota-Manatee student credit hours (SCH) are taught by full-time resident faculty. The campus will maintain this percentage with a goal of even higher ratios once funding for additional faculty members becomes available.
- Likewise, 75% of USF Sarasota-Manatee faculty members teaching undergraduate students have the doctorate degree in the discipline in which they are teaching.

2. Technology: Provide and encourage strategic use of electronic learning technology.

Student convenience and teaching and learning enhancement foci have resulted in a 9% increase in the number of distance learning courses in 2009-10 over 2008-09 levels.

USF Sarasota-Manatee continues to focus curricular efforts on using technology to develop convenient schedules for student learning, such as online courses, distance learning, and hybrid courses.

3. Program Growth: Promote expansion of distinctive upper-division baccalaureate, master's, and research initiatives that serve local and global needs.

Through the efforts of seeking separate accreditation, USF Sarasota-Manatee has worked to ensure degree programs are complete and that students have access to resident faculty and a full course schedule to ensure timely degree obtainment.

USF Sarasota-Manatee plans to increase the number of programs it offers the community in the near future. In concert with the release of the 2010 census data, USF Sarasota-Manatee will conduct a comprehensive environmental scan of the three-county area to identify educational needs and growing markets.

4. Professional and Continuing Education: Provide advanced professional and continuing education that serves community needs.

USF Sarasota-Manatee continued its efforts to meet workforce and professional development needs in Sarasota, Manatee, and DeSoto counties. In addition to its academic programs, USFSM has also strategically provided continuing education credits through its College of Business and the Institute for Public Policy and Leadership.

5. Financial Stability: Grow and diversify the resource base.

USF Sarasota-Manatee lost \$5.96 million in recurring funding from the State of Florida over the last three years. USF Sarasota-Manatee will be seeking \$2 million each year for the next three years from the State Legislature to support the separate accreditation process and to grow into a four-year degree institution. Funds will be used to hire additional faculty to teach general education courses and pre-requisite courses in business and education.

6. Assessment: Expand the system of self-study and continuous improvement.

USF Sarasota-Manatee is committed to engaging in self-assessment in both its academic programs and administrative units. 2009-10 marked the third cycle of academic assessment within the newly autonomous USFSM Colleges.

7. Accreditation: Work toward institutional autonomy within the USF system with separate regional professional accreditations.

In September 2010, USF Sarasota-Manatee submitted its Certification of Compliance to the Southern Association of Colleges and Schools. The campus will be site visited by the accreditors in November 2010 with anticipated accreditation separate from the Tampa Campus in June 2011.

ADDITIONAL INFORMATION ON QUALITY, RESOURCES, EFFICIENCIES, AND EFFECTIVENESS

Since 2006-07, USFSM has reduced its electrical KWH demand by 21%.

ADDITIONAL RESOURCES

University Strategic Plan

http://www.sarasota.usf.edu/ir/Strategic_Plan/StrategicPlanHome.php

College Navigator

<http://nces.ed.gov/collegenavigator/?q=South+Florida&s=all&id=451671#fedloans>

University Institutional Research Unit

<http://www.sarasota.usf.edu/ir/>

STATE UNIVERSITY SYSTEM - 2010 ANNUAL REPORT
TABLE OF CONTENTS

Section 1 - Financial Resources *(including Health-Science Center & IFAS, if applicable)*

Table 1A.	Education and General Revenues
Table 1B.	Education and General Expenditures
Table 1C.	Funding per Student
Table 1D.	Other Budget Entities
Table 1E.	Total Revenues and Expenditures
Table 1F.	Voluntary Support of Higher Education
Table 1G.	Federal Stimulus Dollars (ARRA)

Section 2 - Personnel

Table 2A.	Personnel Headcount
-----------	---------------------

Section 3 - Enrollment & Space

Table 3A.	University Full-time Enrollment (FTE)
Table 3B.	Enrollment by Location
Table 3C.	Space Utilization

Section 4 - Undergraduate Education

Table 4A.	Baccalaureate Degree Program Changes in AY 2009-2010
Table 4B.	First-Year Persistence Rates
Table 4C.	Federal Definition - Undergraduate Progression and Graduation Rates for Full-time First-time-in-College (FTIC) Students
Table 4D.	SUS - Undergraduate Progression and Graduation Rates for First-time-in-College (FTIC) Students
Table 4E.	SUS - Undergraduate Progression and Graduation Rates for AA Transfer Students
Table 4F.	SUS - Undergraduate Progression and Graduation Rates for Other Transfer Students
Table 4G.	Baccalaureate Degrees Awarded
Table 4H.	Baccalaureate Degrees Awarded in Areas of Strategic Emphasis
Table 4I.	Baccalaureate Degrees Awarded to Underrepresented Groups
Table 4J.	Baccalaureate Completion Without Excess Credit Hours
Table 4K.	Undergraduate Course Offerings
Table 4L.	Faculty Teaching Undergraduates
Table 4M.	Undergraduate Instructional Faculty Compensation
Table 4N.	Student/Faculty Ratio
Table 4O.	Licensure Pass Rates
Table 4P.	Tuition Differential Fee

Section 5 - Graduate Education

Table 5A.	Graduate Degree Programs Changes in AY 2009-2010
Table 5B.	Graduate Degrees Awarded
Table 5C.	Graduate Degrees Awarded in Areas of Strategic Emphasis
Table 5D.	Licensure Pass Rates

Section 6 - Research and Economic Development

Table 6A.	Research and Development
Table 6B.	Centers of Excellence
Table 6C.	State University Research Commercialization Assistance Grants
Table 6D.	21st Century World Class Scholars Program

Appendix I - Definitions

STATE UNIVERSITY SYSTEM - 2010 ANNUAL REPORT

Section 1 - Financial Resources

University of South Florida--Sarasota-Manatee

Table 1A. University Education and General Revenues

	2006-07 Actual	2007-08 Actual	2008-09 Actual	2009-10 Actual	2010-11 Estimates
Recurring State Funds <i>(GR & Lottery)</i>	\$16,344,059	\$14,941,901	\$13,959,366	\$11,996,133	\$12,042,638
Non-Recurring State Funds <i>(GR & Lottery)</i>	\$0	\$150,120	\$146,382	\$85,400	\$93,391
Tuition <i>(Resident/Non-Resident)</i>	\$3,640,032	\$4,184,045	\$4,782,090	\$5,234,584	\$6,800,800
Tuition Differential Fee	\$0	\$0	\$0	\$193,210	\$429,618
Other Revenues <i>(Includes Misc. Fees & Fines)</i>	\$112,837	\$7,722	\$8,803	\$66,227	\$59,800
Phosphate Research Trust Fund	\$0	\$0	\$0	\$0	\$0
Federal Stimulus Funds	\$0	\$0	\$0	\$1,012,126	\$968,456
TOTAL	\$20,096,928	\$19,283,788	\$18,896,641	\$18,587,680	\$20,394,703

*Note: 2010-11 estimates for the USF System report are accepted at the request of the BOG. It should be noted however, that a discrepancy in the amount of transfers between the main campus and HSC is reflected in this table and in the HSC corresponding table. In turn, the individual campus reports will not roll up to these reflected totals and will corrections will be reflected in the 2011 Annual Report.

Table 1B. University Education and General Expenditures

	2006-07 Actual	2007-08 Actual	2008-09 Actual	2009-10 Actual	2010-11 Estimates
Instruction/Research	\$9,952,983	\$10,457,953	\$9,423,525	\$9,786,291	\$13,185,794
Institutes and Research Centers	\$0	\$0	\$0	\$0	\$0
PO&M	\$1,312,669	\$1,268,101	\$837,867	\$920,903	\$1,333,216
Administration and Support Services	\$3,374,878	\$2,282,003	\$2,154,447	\$2,528,316	\$3,126,499
Radio/TV	\$0	\$0	\$0	\$0	\$0
Library/Audio Visual	\$802,613	\$707,931	\$545,797	\$1,191,766	\$701,395
Museums and Galleries	\$0	\$0	\$0	\$0	\$0
Agricultural Extension	\$0	\$0	\$0	\$0	\$0
Allied Clinics	\$0	\$0	\$0	\$0	\$0
Student Services	\$1,184,306	\$2,493,848	\$1,829,878	\$1,829,151	\$2,039,577
Intercollegiate Athletics	\$0	\$0	\$0	\$0	\$0
TOTAL	\$16,627,448	\$17,209,836	\$14,791,514	\$16,256,427	\$20,386,481

The table reports the actual and estimated amount of expenditures from revenues appropriated by the legislature for each fiscal year. The expenditures are classified by Program Component (i.e., Instruction/Research, PO&M, Administration, etc...) for activities directly related to instruction, research and public service. The table does not include expenditures classified as non-operating expenditures (i.e., to service asset-related debts), and therefore excludes a small portion of the amount appropriated each year by the legislature. Also, the table does not include expenditures from funds carried forward from previous years.

STATE UNIVERSITY SYSTEM - 2010 ANNUAL REPORT

Section 1 - Financial Resources

University of South Florida--Sarasota-Manatee

Table 1C. Funding per Full-Time Equivalent (FTE) Student

	2006-07	2007-08	2008-09	2009-10	2010-11
Appropriated Funding per FTE					
General Revenue per FTE	\$12,712	\$10,227	\$8,813	\$7,130	\$6,842
Lottery Funds per FTE	\$773	\$438	\$693	\$546	\$650
Tuition & Fees per FTE <i>(based on Budget Authority)</i>	\$3,096	\$2,962	\$3,228	\$3,490	\$4,495
Other Trust Funds per FTE	\$0	\$0	\$0	\$643	\$598
Total per FTE	\$16,581	\$13,627	\$12,734	\$11,809	\$12,585
Actual Funding per FTE					
Tuition & Fees per FTE <i>(based on Actual Collections)</i>	\$3,096	\$2,962	\$3,228	\$3,490	\$4,500
Actual Total per FTE	\$16,581	\$13,627	\$12,734	\$11,809	\$12,590

*Note: Change to reporting of these data on funding per student FTE may result in differences in years prior to 2009-10 as history was not modified to reflect the new reporting methodology.

**Note: Figures are approved for the 2010 Annual Report but it should be noted however, discrepancies due to transfers not reflected in this report may result; figures will be corrected in the following annual report.

Notes: (1) FTE is based on actual FTE, not funded FTE; (2) Does not include Health-Science Center funds or FTE; (3) FTE for these metrics uses the standard IPEDS definition of FTE, equal to 30 credit hours for undergraduates and 24 for graduates; and (4) Actual funding per student is based on actual tuition and E&G fees (does not include local fees) collected.

Table 1D. University Other Budget Entities

	2006-07 Actual	2007-08 Actual	2008-09 Actual	2009-10 Actual	2010-11 Estimates
Contracts & Grants					
Revenues	Contracts & Grants data is a USF system-wide function and consolidated system data is only available at this time.				
Expenditures					
Auxiliary Enterprises					
Revenues	Contracts & Grants data is a USF system-wide function and consolidated system data is only available at this time.				
Expenditures					
Local Funds					
Revenues	Contracts & Grants data is a USF system-wide function and consolidated system data is only available at this time.				
Expenditures					

Table 1E. University's Total Revenues and Expenditures

	2006-07 Actual	2007-08 Actual	2008-09 Actual	2009-10 Actual	2010-11 Estimates
Revenues	\$20,096,928	\$19,283,788	\$18,896,641	\$18,587,680	\$20,394,703
Expenditures	\$16,627,448	\$17,209,836	\$14,791,514	\$16,256,427	\$20,386,481

*Note: 2010-11 estimates for the USF System report are accepted at the request of the BOG. It should be noted however, that a discrepancy in the amount of transfers between the main campus and HSC is reflected in this table and in the HSC corresponding table. In turn, the individual campus reports will not roll up to these reflected totals and will corrections will be reflected in the 2011 Annual Report.

STATE UNIVERSITY SYSTEM - 2010 ANNUAL REPORT

Section 1 - Financial Resources

University of South Florida--Sarasota-Manatee

Table 1F. Voluntary Support of Higher Education

	2004-2005	2005-2006	2006-2007	2007-2008	2008-2009
Endowment Market Value (Thousand \$)	Development/Research data is a USF system-wide function. Consolidated system data is only available at this time.				
Annual Gifts Received (\$)					
Percentage of Graduates Who Are Alumni Donors					

Table 1G. University Federal Stimulus Dollars (ARRA)

	Actual 2009-10	Proposed 2010-11
Proposed Operating Budget Detail		
Jobs Saved/Created	\$1,012,126	\$968,456
Scholarships	\$0	\$0
Library Resources	\$0	\$0
Building Repairs/Alterations	\$0	\$0
Motor Vehicles	\$0	\$0
Printing	\$0	\$0
Furniture & Equipment	\$0	\$0
Information Technology Equipment	\$0	\$0
Financial Aid to Medical Students	\$0	\$0
Other:	\$0	\$0
TOTAL	\$1,012,126	\$968,456

STATE UNIVERSITY SYSTEM - 2010 ANNUAL REPORT

Section 2 - Personnel

University of South Florida--Sarasota-Manatee

Table 2A. Personnel Headcount

	Fall 2005		Fall 2006		Fall 2007		Fall 2008		Fall 2009	
	FT	PT	FT	PT	FT	PT	FT	PT	FT	PT
Faculty <i>Tenure/Tenure-track</i>	30	3	26	2	25	1	28	1	31	1
Faculty <i>Non-Tenure Track</i>	11	11	16	10	14	11	22	8	21	4
Instructors Without Faculty Status	0	0	0	0	0	0	0	0	0	0
Graduate Assistants/ Associates		5		8		8		5		2
Executive/ Administrative/ Managerial	13	0	15	0	25	0	23	0	27	0
Other Professional	37	1	40	2	33	2	38	2	34	1
Non-Professional	22	0	33	0	45	0	38	0	38	0
TOTAL PERSONNEL	133		152		164		165		159	

*Due to a programming concern, part-time calculations are currently being reviewed. Changes would be applicable to both this report and IPEDS HR survey submission. In turn, campus-level figures will not roll-up to sum to these total USF numbers.

STATE UNIVERSITY SYSTEM - 2010 ANNUAL REPORT

Section 3 - Enrollment & Space

University of South Florida--Sarasota-Manatee

Table 3A. University Full-Time Enrollment (FTE)

	2008-09		2009-10		2010-11	
	Funded	Actual	Funded	Actual	Funded	Estimated
Florida Residents						
Lower	0	7	0	32	0	0
Upper	798	905	798	966	798	1,064
Grad I	182	180	182	161	182	132
Grad II	0	2	0	0	0	0
Total	980	1,094	980	1,160	980	1,196
Non-Residents						
Lower		0		0		0
Upper		17		16		16
Grad I		3		3		3
Grad II		0		0		0
Total		20		19		19
Total FTE						
Lower		7		32		0
Upper		922		982		1,080
Grad I		184		164		135
Grad II		2		0		0
Total FTE (FL Definition)	1,002	1,114	980	1,179	980	1,215
Total FTE (US Definition)	1,338	1,484	1,338	1,574	1,338	1,620
Student Headcount in Medical Doctorate (Medicine, Dentistry, Veterinary) Programs						
	2008-09		2009-10		2010-11	
	Funded	Actual	Funded	Actual	Funded	Estimated
Florida Residents	N/A					
Non-Residents						
Total						

Notes: Florida definitions of FTE (Undergraduate FTE = 40 and Graduate FTE = 32 credit hours per FTE) are used for all items except the row named Total FTE (US Definition), which is based on an Undergraduate FTE = 30 and Graduate FTE = 24 credit hours. Actual Medical headcounts are based on Fall enrollment data.

University of South Florida--Sarasota-Manatee**Table 3B. Enrollment by Location***For each distinct location (main, branch, site, regional campus) with > 150 FTE.*

SITE: USF Sarasota/Manatee

FTE by LEVEL	2008-09 Actual	2009-10 Actual	2010-11 Estimated
Lower	7	32	0
Upper	922	982	1,080
Grad I	184	164	135
Grad II	2	0	0
Total	1,114	1,179	1,215

*These figures match the enrollment plan submitted earlier this year.

Section 4 - Undergraduate Education

University of South Florida--Sarasota-Manatee

Table 4A. Baccalaureate Degree Program Changes in AY 2009-2010

Title of Program <i>(add more rows as needed)</i>	Six-digit CIP Code	Degree Level	Date of UBOT Action	Starting or Ending Term	Comments
New Programs					
N/A					
Terminated Programs					
N/A					
Suspended Programs					
N/A					
New Programs Considered by University But Not Approved					

STATE UNIVERSITY SYSTEM - 2010 ANNUAL REPORT

Section 4 - Undergraduate Education

University of South Florida--Sarasota-Manatee

Table 4B. First-Year Persistence Rates

Term of Entry	2004	2005	2006	2007	2008
Cohort Size <i>Full-Time FTIC</i>	Parsing of retention/graduation data at the campus-level cannot be completed at this time.				
<i>From Same University</i>					
% Still Enrolled	Parsing of retention/graduation data at the campus-level cannot be completed at this time.				

Table 4C. Federal Definition - Undergraduate Progression and Graduation Rates for Full-Time First-Time-in-College (FTIC) Students

Term of Entry	Fall 2000	Fall 2001	Fall 2002	Fall 2003	Fall 2004
Cohort Size <i>Full-Time FTIC</i>	Parsing of retention/graduation data at the campus-level cannot be completed at this time.				
6 - Year Rates					
<i>From Same University</i>					
% Graduated	Parsing of retention/graduation data at the campus-level cannot be completed at this time.				
% Still Enrolled					
Success Rate					

Notes: (1) Cohorts are based on undergraduate students who enter the institution in the Fall term (or Summer term and continue into the Fall term); (2) Success Rate measures the percentage of an initial cohort of students who have either graduated or are still enrolled.

STATE UNIVERSITY SYSTEM - 2010 ANNUAL REPORT

Section 4 - Undergraduate Education Data

University of South Florida--Sarasota-Manatee

Table 4D. SUS - Undergraduate Progression and Graduation Rates for First-Time-in-College (FTIC) Students

Term of Entry	Fall 2000	Fall 2001	Fall 2002	Fall 2003	Fall 2004
Cohort Size <i>Full- & Part-Time</i>	Parsing of retention/graduation data at the campus-level cannot be completed at this time.				
4 - Year Rates					
<i>From Same University</i>					
% Graduated	Parsing of retention/graduation data at the campus-level cannot be completed at this time.				
% Still Enrolled					
<i>From Other SUS Institution</i>					
% Graduated	Parsing of retention/graduation data at the campus-level cannot be completed at this time.				
% Still Enrolled					
<i>From State University System</i>					
% Graduated	Parsing of retention/graduation data at the campus-level cannot be completed at this time.				
% Still Enrolled					
Success Rate					
6 - Year Rates					
<i>From Same University</i>					
% Graduated	Parsing of retention/graduation data at the campus-level cannot be completed at this time.				
% Still Enrolled					
<i>From Other SUS Institution</i>					
% Graduated	Parsing of retention/graduation data at the campus-level cannot be completed at this time.				
% Still Enrolled					
<i>From State University System</i>					
% Graduated	Parsing of retention/graduation data at the campus-level cannot be completed at this time.				
% Still Enrolled					
Success Rate					

Notes: (1) Cohorts are based on undergraduate students who enter the institution in the Fall term (or Summer term and continue into the Fall term); (2) Success Rate measures the percentage of an initial cohort of students who have either graduated or are still enrolled.

STATE UNIVERSITY SYSTEM - 2010 ANNUAL REPORT

Section 4 - Undergraduate Education Data

University of South Florida--Sarasota-Manatee

Table 4E. SUS - Undergraduate Progression and Graduation Rates for AA Transfer Students

Term of Entry	Fall 2002	Fall 2003	Fall 2004	Fall 2005	Fall 2006
Cohort Size <i>Full- & Part-Time</i>	Parsing of retention/graduation data at the campus-level cannot be completed at this time.				
2 - Year Rates					
<i>From Same University</i>					
% Graduated	Parsing of retention/graduation data at the campus-level cannot be completed at this time.				
% Still Enrolled					
<i>From Other SUS Institution</i>					
% Graduated	Parsing of retention/graduation data at the campus-level cannot be completed at this time.				
% Still Enrolled					
<i>From State University System</i>					
% Graduated	Parsing of retention/graduation data at the campus-level cannot be completed at this time.				
% Still Enrolled					
Success Rate					
4 - Year Rates					
<i>From Same University</i>					
% Graduated	Parsing of retention/graduation data at the campus-level cannot be completed at this time.				
% Still Enrolled					
<i>From Other SUS Institution</i>					
% Graduated	Parsing of retention/graduation data at the campus-level cannot be completed at this time.				
% Still Enrolled					
<i>From State University System</i>					
% Graduated	Parsing of retention/graduation data at the campus-level cannot be completed at this time.				
% Still Enrolled					
Success Rate					
Notes: (1) Cohorts are based on undergraduate students who enter the institution in the Fall term (or Summer term and continue into the Fall term); (2) Success Rate measures the percentage of an initial cohort of students who have either graduated or are still enrolled.					

STATE UNIVERSITY SYSTEM - 2010 ANNUAL REPORT

Section 4 - Undergraduate Education Data

University of South Florida--Sarasota-Manatee

Table 4F. SUS - Undergraduate Progression and Graduation Rates for Other Transfer Students

Term of Entry	Fall 2001	Fall 2002	Fall 2003	Fall 2004	Fall 2005
Cohort Size <i>Full- & Part-Time</i>	Parsing of retention/graduation data at the campus-level cannot be completed at this time.				
5 - Year Rates					
<i>From Same University</i>					
% Graduated	Parsing of retention/graduation data at the campus-level cannot be completed at this time.				
% Still Enrolled					
<i>From Other SUS Institution</i>					
% Graduated	Parsing of retention/graduation data at the campus-level cannot be completed at this time.				
% Still Enrolled					
<i>From State University System</i>					
% Graduated	Parsing of retention/graduation data at the campus-level cannot be completed at this time.				
% Still Enrolled					
Success Rate					

Notes: (1) Cohorts are based on undergraduate students who enter the institution in the Fall term (or Summer term and continue into the Fall term); (2) Success Rate measures the percentage of an initial cohort of students who have either graduated or are still enrolled.

Table 4G. Baccalaureate Degrees Awarded

	2005-2006	2006-2007	2007-2008	2008-2009	2009-2010
Baccalaureate Degrees	355	384	427	450	357

Table 4H. Baccalaureate Degrees Awarded in Areas of Strategic Emphasis

	2005-2006	2006-2007	2007-2008	2008-2009	2009-2010
Education	3	2	10	11	0
Health Professions	1	6	18	16	4
Science, Technology, Engineering, and Math	14	13	18	23	10
Security and Emergency Services	30	27	23	28	37
Globalization	2	7	0	0	0
TOTAL: Areas of Strategic Emphasis	50	55	69	78	51

STATE UNIVERSITY SYSTEM - 2010 ANNUAL REPORT

Section 4 - Undergraduate Education Data

University of South Florida--Sarasota-Manatee

Table 4I. Baccalaureate Degrees Awarded to Underrepresented Groups

	2005-2006	2006-2007	2007-2008	2008-2009 BASELINE YEAR	2009-2010
Non-Hispanic Black Students					
Number of Baccalaureate Degrees	19	32	22	26 Increase*	15
Percentage of All Baccalaureate Degrees	5.5%	8.8%	5.5%	5.9% Increase*	4.3%
Hispanic Students					
Number of Baccalaureate Degrees	25	18	37	27 Increase*	26
Percentage of All Baccalaureate Degrees	7.2%	5.0%	9.3%	6.2% Increase*	7.5%
PELL-Grant Recipients					
Number of Baccalaureate Degrees*	151	138	153	158 Increase*	161
Percentage of All Baccalaureate Degrees	43.6%	37.9%	38.3%	36.3% Increase*	45.7%

Note: PELL-Grant recipients are defined as those students who have received a PELL-Grant Within 6 Years of Graduation. This does not include degrees awarded to students whose race/ethnicity code is missing (or not reported) or for students who are non-resident aliens. **Note*:** Directional goals for the 2012-13 year as reported in the 2010 University Workplan.

*Due to methodology changes in this data metric, campus-level figures may not roll up to the system numbers.

Table 4J. Baccalaureate Completion Without Excess Credit Hours

	2005-2006	2006-2007	2007-2008	2008-2009	2009-2010
% of Total Baccalaureate Degrees Awarded Within 110% of Hours Required for Degree	N/A	N/A	61.8%	67.1%	66.1%

Table 4K. Undergraduate Course Offerings

	Fall 2005	Fall 2006	Fall 2007	Fall 2008	Fall 2009
Number of Course Sections	169	179	193	143	135
Fewer than 30 Students	85.2%	86.0%	88.6%	81.8%	86.7%
30 to 49 Students	13.0%	13.4%	10.9%	14.7%	11.1%
50 to 99 Students	1.8%	0.0%	0.0%	2.8%	1.5%
100 or More Students	0.0%	0.6%	0.5%	0.7%	0.7%

STATE UNIVERSITY SYSTEM - 2010 ANNUAL REPORT

Section 4 - Undergraduate Education Data

University of South Florida--Sarasota-Manatee

Table 4L. Faculty Teaching Undergraduates

	2005-2006	2006-2007	2007-2008	2008-2009	2009-2010
Percentage of Credit Hours Taught by:					
Faculty	57.0%	56.5%	60.8%	58.4%	60.5%
Adjunct Faculty	42.5%	41.3%	38.0%	38.7%	38.1%
Graduate Students	0.4%	2.2%	1.0%	2.6%	0.7%
Other Instructors	0.0%	0.0%	0.2%	0.3%	0.7%

Note: The definition of faculty varies for Tables 4L, 4M and 4N. For Faculty Teaching Undergraduates, the definition of faculty is based on pay plans 01, 02, and 22.

Table 4M. Undergraduate Instructional Faculty Compensation

	Fall 2005	Fall 2006	Fall 2007	Fall 2008	Fall 2009
Average Salary and Benefits for Faculty Who Teach at Least One Undergraduate Course	\$80,236	\$81,592	\$87,377	\$86,817	\$87,857

Note: The definition of faculty varies for Tables 4L, 4M and 4N. For Undergraduate Instructional Faculty Compensation, the definition of faculty is based on pay plan 22.

Table 4N. Student/Faculty Ratio

	2005-2006	2006-2007	2007-2008	2008-2009	2009-2010
Student-to-Faculty Ratio	21	21	26	23	19

Note: The definition of faculty varies for Tables 4L, 4M and 4N. For Student/Faculty Ratio, the definition of faculty is consistent with Common Data Set reporting (which counts full-time equivalent instructional faculty as full-time faculty plus 1/3 part-time faculty).

STATE UNIVERSITY SYSTEM - 2010 ANNUAL REPORT

Section 4 - Undergraduate Education Data

University of South Florida--Sarasota-Manatee

Table 4O. Professional Licensure Exams - Undergraduate Programs

	2005	2006	2007	2008	2009
Nursing: <i>National Council Licensure Examination for Registered Nurses</i>					
Examinees	N/A				
Pass Rate					
National Benchmark					

Note: All licensure data is based on first-time examinees.

Table 4P. Tuition Differential Fee

	2008-2009	2009-2010	2010-2011 Projected
Total Revenues Generated By the Tuition Differential	--	\$193,210	\$429,618
Unduplicated Count of Students Receiving Financial Aid Award Funded by Tuition Differential Revenues	--	74	
Average Amount of Awards Funded by Tuition Differential Revenues (per student receiving an award)	--	\$842	
Number of Students Eligible for FSAG	--	336	
Number of FSAG-Eligible Students Receiving a Waiver of the Tuition Differential	--	0	
Value of Tuition Differential Waivers Provided to FSAG-Eligible Students	--	0	

Report on the success of the tuition differential in achieving the articulated purpose. Include an update on any performance measures that were specified in the Board of Governors-approved tuition differential proposal.

USF Sarasota-Manatee achieved its goal of funding 40 courses in Fall 2010 with revenue generated by the tuition differential. This is an increase of 11 courses over the Spring 2010 semester.

Detailed expenditures of the revenues generated by the tuition differential will be captured in the Operating Budget submission each August.

STATE UNIVERSITY SYSTEM - 2010 ANNUAL REPORT

Section 5 - Graduate Education Data

University of South Florida--Sarasota-Manatee

Table 5A. Graduate Degree Programs Changes in AY 2009-2010

Title of Program <i>(add more rows as needed)</i>	Six-digit CIP Code	Degree Level	Date of UBOT Action	Starting or Ending Term	Date of Board of Governors Action	Comments
New Programs						
N/A						
Terminated Programs						
N/A						
Suspended Programs						
N/A						
New Programs Considered by University But Not Approved						

STATE UNIVERSITY SYSTEM - 2010 ANNUAL REPORT

Section 5 - Graduate Education Data

University of South Florida--Sarasota-Manatee

Table 5B. Graduate Degrees Awarded

	2005-2006	2006-2007	2007-2008	2008-2009	2009-2010
Master's and Specialist	178	86	109	125	59
Research Doctoral	N/A				
Professional Doctoral					
a) Medicine					
b) Law					
c) Pharmacy					
Research/ Professional Doctoral, Combined					

Note: The total number of Professional Doctoral degrees includes other programs that are not specifically identified in lines a, b, and c.

Table 5C. Graduate Degrees Awarded in Areas of Strategic Emphasis

	2005-2006	2006-2007	2007-2008	2008-2009	2009-2010
Education <i>Critical Shortage Areas</i>	32	25	19	12	12
Health Professions	3	2	9	7	4
Science, Technology, Engineering, and Math	0	0	0	1	0
Security and Emergency Services	20	0	13	3	4
Globalization	0	0	0	0	0
TOTAL	55	27	41	23	20

STATE UNIVERSITY SYSTEM - 2010 ANNUAL REPORT

Section 5 - Graduate Education Data

University of South Florida--Sarasota-Manatee

Table 5D. Professional Licensure Exams - Graduate Programs

	2005	2006	2007	2008	2009
Law					
<i>Florida Bar Exam</i>					
Examinees	N/A				
Pass Rate					
State Benchmark					
Medicine					
<i>US Medical Licensing Exam (Step 1)</i>					
Examinees	N/A				
Pass Rate					
National Benchmark					
Medicine					
<i>US Medical Licensing Exam (Step 2) Clinical Knowledge</i>					
Examinees	N/A				
Pass Rate					
National Benchmark					
Medicine					
<i>US Medical Licensing Exam (Step 2) Clinical Skills</i>					
Examinees	N/A				
Pass Rate					
National Benchmark					

Note: All licensure data is based on first-time examinees.

STATE UNIVERSITY SYSTEM - 2010 ANNUAL REPORT

Section 5 - Graduate Education Data

University of South Florida--Sarasota-Manatee

Table 5D. Professional Licensure Exams - Graduate Programs

	2005	2006	2007	2008	2009
Dentistry					
<i>National Dental Board Exam (Part 1)</i>					
Examinees	N/A				
Pass Rate					
National Benchmark					
Dentistry					
<i>National Dental Board Exam (Part 2)</i>					
Examinees	N/A				
Pass Rate					
National Benchmark					
Veterinary Medicine					
<i>North American Veterinary Licensing Exam</i>					
Examinees	N/A				
Pass Rate					
National Benchmark					
Pharmacy					
<i>North American Pharmacist Licensure Exam</i>					
Examinees	N/A				
Pass Rate					
National Benchmark					

Note: All licensure data is based on first-time examinees.

STATE UNIVERSITY SYSTEM - 2010 ANNUAL REPORT
Section 6 - Research and Economic Development

University of South Florida--Sarasota-Manatee

Table 6A. Research and Development

	2004-2005	2005-2006	2006-2007	2007-2008	2008-2009
R&D Awards (includes non-Science & Engineering awards)					
Federally Funded Awards (Thousand \$)	Historical data not available at this time by campus.				\$0
Total Awards (Thousand \$)					\$9
R&D Expenditures (includes non-Science & Engineering expenditures)					
Federally Financed Expenditures (Thousand \$)	Development/Research data is a USF system-wide function. Consolidated system data is only available at this time.				
Total Expenditures (Thousand \$)					
Total R&D Expenditures Per Full-Time, Tenured, Tenure-Earning Faculty Member (\$)					
Technology Transfer (as reported to AUTM)					
Invention Disclosures	DATA ARE ONLY APPLICABLE TO TAMPA CAMPUS				
Total U.S. Patents Issued					
Patents Issued Per 1,000 Full-Time, Tenure and Tenure-Earning Faculty					
Total Number of Licenses/Options Executed					
Total Licensing Income Received (\$)					
Total Number of Start-Up Companies					

STATE UNIVERSITY SYSTEM - 2010 ANNUAL REPORT
Section 6 - Research and Economic Development

University of South Florida--Sarasota-Manatee

Table 6B. Centers of Excellence
(Please complete for each Center of Excellence)

Name of Center:	N/A	Cumulative	Fiscal Year
Year Created:		(since inception to June 2010)	2009-10

Research Effectiveness
Only include data for activities directly associated with the Center. Do not include the non-Center activities for faculty who are associated with the Center.

Number of Competitive Grants Applied For		
Value of Competitive Grants Applied For (\$)		
Number of Competitive Grants Received		
Value of Competitive Grants Received (\$)		
Total Research Expenditures (\$)		
Number of Publications in Refereed Journals From Center Research		
Number of Invention Disclosures		
Number of Licenses/Options Executed		
Licensing Income Received (\$)		

Collaboration Effectiveness
Only report on relationships that include financial or in-kind support.

Collaborations with Other Postsecondary Institutions		
Collaborations with Private Industry		
Collaborations with K-12 Education Systems/Schools		
Undergraduate and Graduate Students Supported with Center Funds		

Economic Development Effectiveness

Start-Up companies <i>with a physical presence, or employees, in Florida</i>		
Jobs Created By Start-Up Companies Associated with the Center		
Specialized Industry Training and Education		
Private-sector Resources Used to Support the Center's Operations		

Narrative Comments [Most Recent Year]

(Limit to a maximum of 1/2 page per center)

Insert additional pages, as needed for additional Centers.

STATE UNIVERSITY SYSTEM - 2010 ANNUAL REPORT
Section 6 - Research and Economic Development

University of South Florida--Sarasota-Manatee

Table 6C. State University Research Commercialization Assistance Grants

Project Name by Type of Grant	Cumulative	
	AWARDS	EXPENDITURES
Phase I Grants		
	\$0	\$0
Phase II Grants		
	\$0	\$0
Phase III Grants		
	\$0	\$0
Total for all SURCAG Grants	\$0	\$0

Narrative Comments

For each project, provide a brief update on: (1) the project's progress towards completing its key milestones/deliverables; and (2) the project's return on investment for the university and state. In addition, Phase III grants, must provide a status update on the project's ability to generate sufficient revenues to sustain a profitable operation.

Table 6D. 21st Century World Class Scholars Program

World Class Scholar(s) and Field	Grant Dollars		Report the cumulative activity since each scholar's award.		
	Amount Awarded <i>(Thousand \$)</i>	Cumulative Amount Expended <i>(Thousand \$)</i>	External Research Awards <i>(Thousand \$)</i>	Patents Filed/ Issued	Licensing Revenues Generated <i>(\$)</i>
N/A					
TOTAL for all Scholars	\$0	\$0	\$0	0	\$0

Narrative Comments