

January 1988

Schilflied (The Reed Song)

Robert Helps

Follow this and additional works at: https://digitalcommons.usf.edu/robert_helps

Recommended Citation

Helps, Robert, "Schilflied (The Reed Song)" (1988). *Robert Helps Collection, 1928-2001*. 7.
https://digitalcommons.usf.edu/robert_helps/7

This Book is brought to you for free and open access by the Arts and Humanities at Digital Commons @ University of South Florida. It has been accepted for inclusion in Robert Helps Collection, 1928-2001 by an authorized administrator of Digital Commons @ University of South Florida. For more information, please contact digitalcommons@usf.edu.

AMERICAN COMPOSERS ALLIANCE

AMERICAN COMPOSERS EDITION

COMPOSERS FACSIMILE EDITION

170 WEST 74th STREET
NEW YORK, N.Y. 10023

Robert Helps

SCHILFLIED

(Mendelssohn's The Reed Song Op. 71 No. 4)

FOR ROBERT McBRIDE
and
JOHN BIRD

SCHILFLIED

(The Reed Song)

for voice and piano
Felix Mendelssohn op. 71 # 4

transcribed for piano solo by

ROBERT HELPS

March 1988

NOTES

1) "Andantino" (in this piece) means slower than Andante.

2) Circled notes are to be brought out. This can vary from a little to a lot. These notes correspond to the sung pitches in the original score, although sometimes they are at a different octave.

3) Only a few "suggested" dynamics and phrasings are indicated in this score. Minus the confines of a sung text more varied possibilities of interesting dynamics and phrasings become available and should be freely explored by the performer.

Andantino - espressivo - molto legato

Handwritten musical notation for the first system, measures 1-4. The key signature is two sharps (F# and C#). The time signature is 6/8, with a '6' written above the first measure and an '8' below it. The first measure is marked with '(pp)' (pianissimo). The notation includes a treble and bass staff with various notes, rests, and a fermata in the bass staff.

con molto pedale

Handwritten musical notation for the second system, measures 5-8. The notation continues with a treble and bass staff, featuring various notes, rests, and a fermata in the bass staff.

Handwritten musical notation for the third system, measures 9-12. The notation continues with a treble and bass staff, featuring various notes, rests, and a fermata in the bass staff.

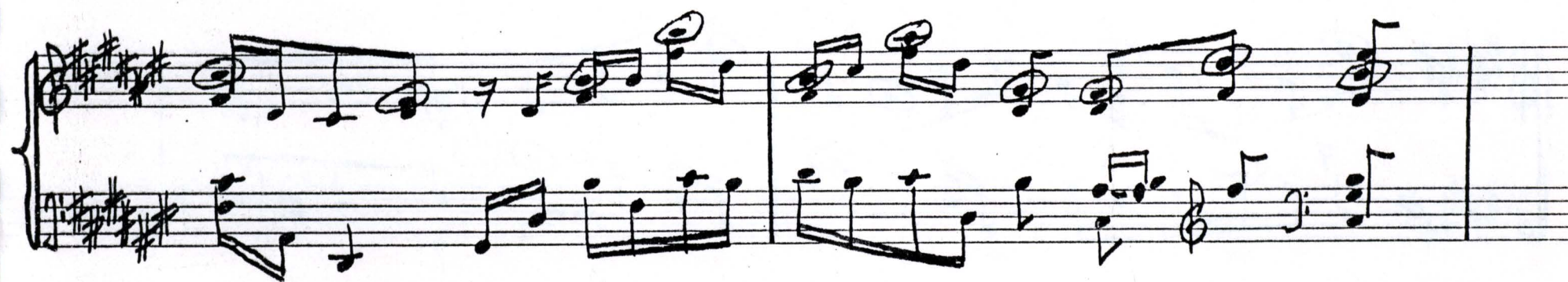
Handwritten musical notation for the fourth system, measures 13-16. The notation continues with a treble and bass staff, featuring various notes, rests, and a fermata in the bass staff.

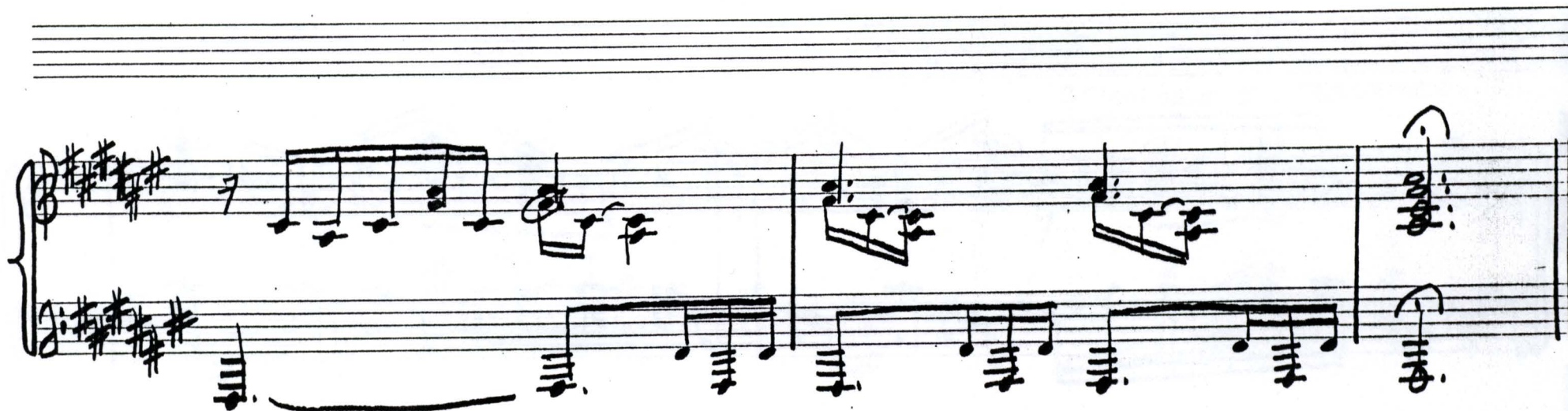
Handwritten musical notation for the fifth system, measures 17-20. The notation continues with a treble and bass staff, featuring various notes, rests, and a fermata in the bass staff.

(lunga)

(f) (pp)

animando e crescendo





SCHILFLIED

(The Reed Song)

for voice and piano
Felix Mendelssohn op. 71 # 4

transcribed for piano solo by

ROBERT HELPS

March 1988

NOTES

1) "Andantino" (in this piece) means slower than Andante.

2) Circled notes are to be brought out. This can vary from a little to a lot. These notes correspond to the sung pitches in the original score, although sometimes they are at a different octave.

3) Only a few "suggested" dynamics and phrasings are indicated in this score. Minus the confines of a sung text more varied possibilities of interesting dynamics and phrasings become available and should be freely explored by the performer.

Andantino - espressivo - molto legato

Handwritten musical score for the first system, measures 1-4. The key signature is two sharps (F# and C#), and the time signature is 6/8. The notation is in treble and bass staves. The first measure contains a piano (pp) dynamic marking. The music features a melodic line in the treble and a supporting bass line. The first measure is marked with a '6' and an '8' above the bass staff, indicating a 6/8 time signature.

con molto pedale

Handwritten musical score for the second system, measures 5-8. The notation continues from the first system. The bass staff includes fingerings: 3, 5, 1, 1, 5, 2, 3, 1, 2, 4, 1. The treble staff includes a fingering of 1, 2, 1. The music maintains the 6/8 time signature and expressive character.

Handwritten musical score for the third system, measures 9-12. The notation continues from the second system. The music features a melodic line in the treble and a supporting bass line. The first measure of this system has a long slur over it, indicating a phrase.

Handwritten musical score for the fourth system, measures 13-16. The notation continues from the third system. The bass staff includes a fingering of 1, 5, 4, 3, 2, 1. The treble staff includes a fingering of 1, 5, 4. The music maintains the 6/8 time signature and expressive character.

Handwritten musical score for the fifth system, measures 17-20. The notation continues from the fourth system. The bass staff includes a fingering of 5, 1, 5, 4, 2. The treble staff includes a fingering of 5. The music maintains the 6/8 time signature and expressive character.

(lunga)

(f) (pp)

ped.

animando e crescendo

