

4-1-1994

USF St. Petersburg Boasts Active Agenda

University of South Florida [System]. University Communications and Marketing.

Follow this and additional works at: https://scholarcommons.usf.edu/usf_mag_articles_usfsp

Scholar Commons Citation

University of South Florida [System]. University Communications and Marketing., "USF St. Petersburg Boasts Active Agenda" (1994). *USF Magazine Articles about USF St. Petersburg campus*. 4.
https://scholarcommons.usf.edu/usf_mag_articles_usfsp/4

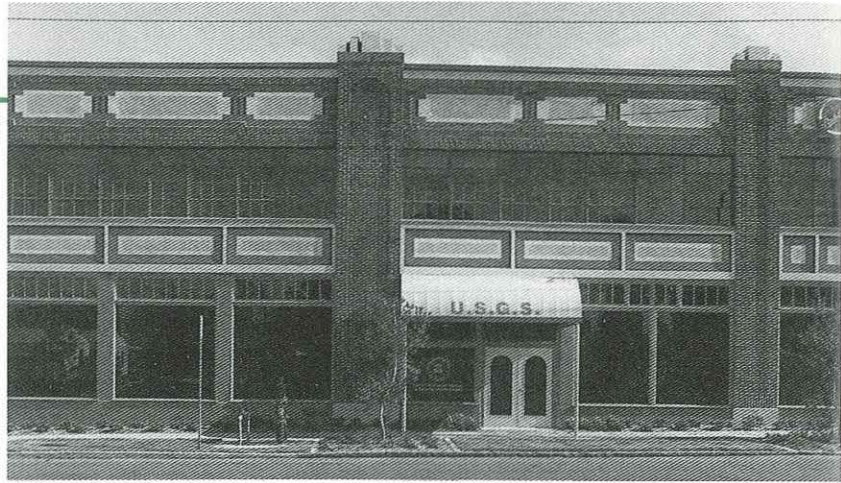
This Other is brought to you for free and open access by the USF St. Petersburg campus University Advancement at Scholar Commons. It has been accepted for inclusion in USF Magazine Articles about USF St. Petersburg campus by an authorized administrator of Scholar Commons. For more information, please contact scholarcommons@usf.edu.

USF ST. PETERSBURG BOASTS ACTIVE AGENDA

The United States Geological Survey Site Review Team visited the St. Petersburg campus for five days recently, to tour the campus and meet with USF officials, marine scientists and U.S. Geological Survey scientists. They discussed expansion opportunities for the USGS — which wants to double its existing 24,000-square-foot space on campus, and increase its current 38-member staff by 60 percent. The USGS conducts research on coastal erosion, pollution, and wetland deterioration in Florida, Texas, Louisiana, Ohio and South Carolina.

The state of Florida is purchasing additional property at the corner of Fifth Avenue and First Street South in St. Petersburg. The buildings now located there will be renovated and used as additional campus instructional and office space in 1994.

USF St. Petersburg has also begun the search for a holder of the Marie and Leslie Cole Endowed Chair in Ethics. Nancy McIntosh, associate professor of management, is chairing the search committee. Candidates will visit the campus



The United States Geological Survey office is located in the Studebaker building on USF's St. Petersburg campus.

throughout the semester, and a decision is expected this summer. Other faculty searches are under way in geography, business, education and public administration.

During the many Black History Month celebrations in February, USF St. Petersburg hosted its annual international symposium, with this year's focus on South Africa. Titled "South Africa: Country at the Crossroads," the symposium explored African heritage, history and culture and included more than a dozen lectures, films, exhibits and special events.

More than 600 people attended the kickoff of the Academic Frontiers lectures on *The Search for Quality and Equality* — a turnout that showed tremendous community interest and support. The program was made possible by a \$14,400 grant from the Florida Humanities Council, with additional support from the *St. Petersburg Times*.

The 22nd annual Florida Suncoast Writer's Conference was also held at the St. Petersburg campus in February. About 400 visitors converged on the campus to attend sessions run by successful authors.



Guest director Matthew Francis (far right) shares some Shakespearean theatre techniques with USF students.

BRIT THEATRE PROGRAM BRINGS 'MAJOR PLAYERS' TO USF

USF may seem like an unlikely spot for the top names in British Theatre to gather every year.

But thanks to the British International Theatre (BRIT) program, several of

England's best-known and most promising actors, directors, writers and choreographers come to USF each winter to work with students in the theatre department.

Though most university theatre departments have guest artists, the BRIT Program is unique for the caliber of artists it attracts and the intensive interaction between students and artists.

"It's extraordinary, the kind of artists who have been part of this program," says theatre department chair Denis Calandra. "If, in fact, our students were to travel to London, they still wouldn't get a chance to work with these people."

The BRIT Program began four

years ago, through talks between local arts patron Hinks Shimberg and renowned London producer John Gale.

"John and I go back as friends to the early '70s when I was spending a lot of time in London," Shimberg says. "My wife Elaine and I had for many years been close to the USF theatre department. We began to think, 'Wouldn't it be startling to take John's expertise and bring it to USF?'"

Gale agreed, and using connections he'd made in his decades as Britain's top producer (plus, he admits, the lure of a winter in Florida), made the arrangements. Funding for the program comes from the Hinks & Elaine Shimberg Foundation and Cameron Macintosh, a British producer of *Phantom of the Opera*.

This year's group of artists included Matthew Francis, the director of the prestigious Greenwich Theatre, director Joe Harmston, vocal teacher Leigh Howard, actress Lisel Gale, and John Gale. In previous years, guests included playwright Christopher Frye (best known for *The Lady's Not for Burning*) and directors like Peter Barkworth and Sam Mendes.

This year's program culminated in

a production of Shakespeare's *Twelfth Night*, with a student cast directed by Francis.

The significance of the BRIT program, Calandra says, goes far beyond the training of the students who work directly with the visitors.

This year, Calandra and Francis worked with Tom Ross, who heads USF's English department. Ross put *Twelfth Night* on the syllabus for freshman English classes, who attended the production and discussed Shakespeare with Calandra and Francis.

For next year's BRIT program, Calandra and Gale hope to feature playwright Louise Page, and to produce a new work commissioned by USF. That could bring international attention to USF's theatre department.

Gale, Francis, and other artists in the BRIT program are enthusiastic.

"We've been impressed with the students," John Gale says. "I think they have benefitted greatly by working with a brilliant young director in Matthew Francis. He's taught them a lot and they've been quite professional."

By Marty Clear