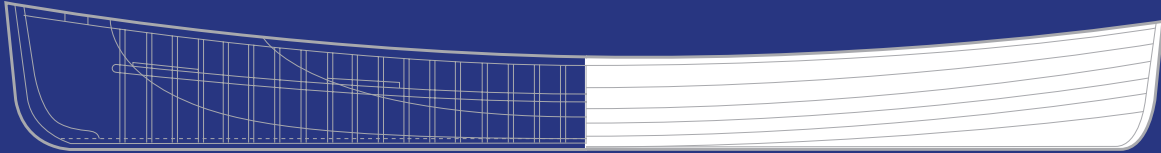


*the water is wide*



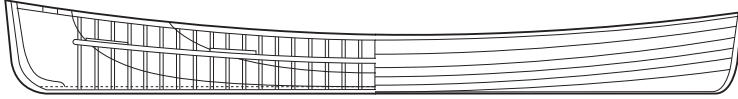
THE ART OF BOAT BUILDING

*The Studio@620 in collaboration with The Florida Maritime Museum of Cortez*

the studio  
@620



*the water is wide*



THE ART OF BOAT BUILDING

*The Studio@620 in collaboration with The Florida Maritime Museum of Cortez*

This exhibition is a presentation of a small part of the history and the art of boat building on the West Coast of Florida. Using full scale boats, models, hands-on building experiences and lectures as well as the written word we can begin to understand something of the influence that boats have had on the lives of people who have called this area home.

This is an unusual gathering of boats as well as men and women of the sea.

We hope you will enjoy it.

This project is funded in part with the support of the Pinellas County Cultural Affairs Department, the Cultural Council, and the Pinellas County Board of County Commissioners.



Media Sponsor



Additional support provided by:



The Studio@620 is supported by its members, individuals and businesses throughout the community.

the studio  
**@620**

620 1ST AVE. S.  
ST. PETERSBURG, FL 33701

727-895-6620  
www.thestudioat620.org  
information@thestudioat620.org

**NON PROFIT ORG  
U.S. POSTAGE PAID  
ST. PETERSBURG FL  
PERMIT #312**